

WebViews Guide - Foreseer 7.0



Contents

1. WebViews Guide	4
WebViews Navigation	5
WebViews Reports	5
WebViews Graphs	6
2. WebViews Basics	7
Accessing WebViews.....	7
Breadcrumbs.....	7
Channel Displays.....	8
Gauges and Other Indicators.....	9
Folders and Links	10
Drop-Down Menus.....	11
3. Using WebViews Graph.....	12
Loading Channels into Graphs.....	12
Removing Plots.....	12
Comparing Values	13
Properties.....	13
Exporting Graphs and Graph Data	15
Saving and Loading the Graph Configuration.....	15
Projecting values with Prograph and Sightline	16
4. WebViews Waveforms	17
Using the Waveform Control.....	17
Using the Waveform Viewer Pop-out	19
Zooming and Scrolling	20
Customizing Plots with the Show Menu.....	20
Export	21
Properties	21
5. Responding to Alarms	22
Alarm Reporting	22
Alarm Management Window	23
Acknowledging an Alarm	23
Adding a Note.....	24
Rearming a Channel.....	25
Managing an Alarm Through the Details Window	25
Using the Quick Filters in the Show Menu	26
Using Alarm Filters.....	27
Hiding Alarms by Priority.....	27

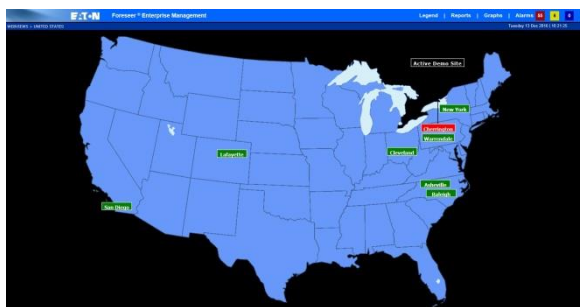
Hiding or Including Alarms From Specific Servers, Devices, and Channels	28
Re-Using Filters	29
6. Using WebViews Reports	29
Generating Reports	30
Setting up a Custom Report	31
Exporting Report Data	33
7. Understanding Foreseer Alarms	34
Latching Example	35
Unlatching Example	36
8. Configuring Alarm Settings	38
Basic Alarm Properties	38
Advanced Alarm Settings	40
9. Channel Properties	41
Scaling Analog Channel Values	41
Analog Channel Properties	43
Analog Channel Alarm Properties	44
Analog Channel Advanced Properties	45

1. WebViews Guide

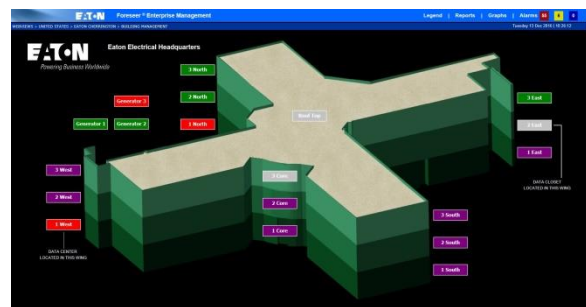
Foreseer is a vital part of an enterprise operations center, monitoring power and environmental inputs from equipment, sensors and other systems. It furnishes a single integrated system that provides real-time and historical views into the operation of the power and environmental conditions that support your operation, whether that operation is a health care facility, large data center, or campus. Operators interact with Foreseer through WebViews. WebViews provides browser-based view of your system consisting of:

- Map or floor plan based diagrams showing the location of sites, buildings, and equipment.
- One-line electrical diagrams that provide real-time views of critical energy data from your equipment.
- Location diagrams, showing the physical location of equipment in electrical panels as well as real-time data from that equipment.
- Detailed dashboard views of the most popular real-time data from each piece of equipment.

Foreseer security privileges combine to define what each account allows an operator to see and do. Foreseer accounts can be integrated with Microsoft Active Directory to leverage your existing account directory service. Foreseer logging provides a record of what actions each operator performs,



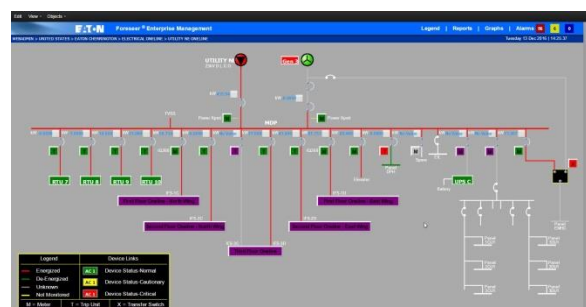
Navigational page using a 2-D



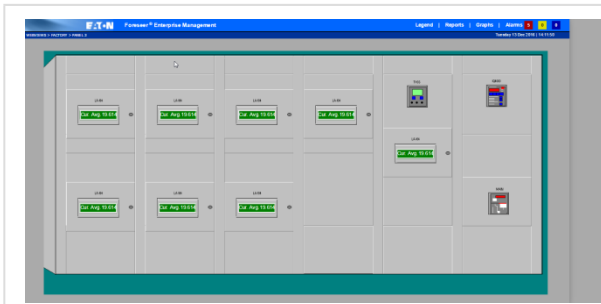
Navigational page using a 3D



Floor plan page



One-line with navigational



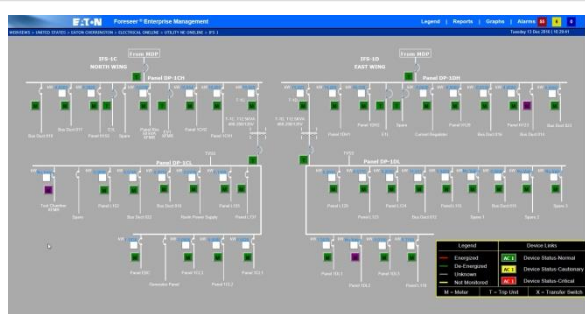
Elevation diagram showing equipment in cabinet



Dashboard for enterprise



Branch circuit monitor



Large one-line

WebViews Navigation

WebViews are generally organized into a hierarchical view of your power system. Operators can "drill down" through the hierarchy to see as much detail as they wish. WebViews pages include real-time values from devices, as well as a variety of gauge-type displays and "indicator lights." Electrical one-lines can include electrical symbols that change color or "open" and "close" based on real-world conditions. For example, breaker symbols will open or close based on the actual state of the breakers. Device symbols and displays will also change color to indicate alarm conditions. Operators can move through the web of pages using hyperlinks. Current position in the set of WebViews is shown through "navigational breadcrumbs" at the top of each WebViews page. The breadcrumbs are live links operators can use to "backtrack" up through the WebViews hierarchy.

WebViews Reports

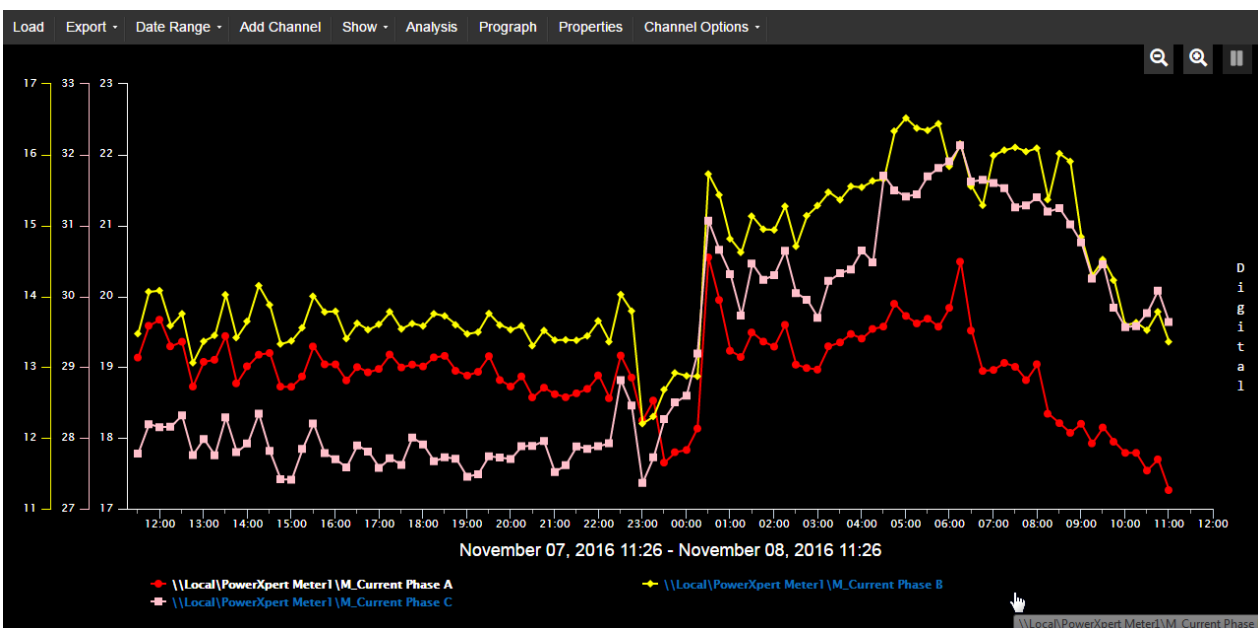
Each WebViews page has a link to the report generator/manager. Operators can generate and review reports about alarms, channels, system configuration, and server up time. Some WebViews Reports are available in two formats: standard and tab-delimited data. All reports can be exported as text files to the operator's local computer.

Reports			
Report Type	Available Reports		
Alarm History [1 Day]	09/20/16 12:26:04 [876 bytes]	09/20/16 12:26:03 [876 bytes]	09/20/16 12:26:02 [876 bytes]
Alarm History [30 Day]	09/30/16 13:01:22 [17446 bytes]		
Alarm History [7 Day]	10/03/16 13:34:07 [1418 bytes]	10/03/16 13:34:06 [1418 bytes]	10/03/16 13:34:04 [1418 bytes]
Alarm History [Custom]			
Audit History			
Channel Data			
Channel	09/15/16 10:54:26 [77078 bytes]		
Log File	09/21/16 10:46:40 [5513 bytes]	09/15/16 11:11:07 [4574 bytes]	09/15/16 11:11:07 [4574 bytes]
Notes History [1 Day]			
Notes History [30 Day]			
Notes History [7 Day]			
Notes History [Custom]			
Previous Log File			
Sequence of Events	10/03/16 15:23:52 [243 bytes]		
System Configuration			
System Up-Down	10/03/16 15:24:44 [3676 bytes]		

WebViews Graphs

Operators can view data from up to 20 device channels in an interactive graph. Plots can provide a historical view of up to six months of data or can be used to watch data in real time. Plots can be printed or exported as .jpg or .png graphics files. Operators can also access a data analysis window that provides a variety of statistical calculations regarding data from selected channels.

Graph also provides a proactive feature: ProGraph. ProGraph is a linear projection to help determine where channel values may be in the future.



2. WebViews Basics

Accessing WebViews

To access WebViews, use one of the following browsers:

- Internet Explorer 11 - 11.0.46 or later
- Safari (Mac OS, iOS) - 10.1 or later
- Chrome - 61.0 or later
- Edge - 41.0 or later

The URL for WebViews is:

`http://foreseer_server/WebViews`

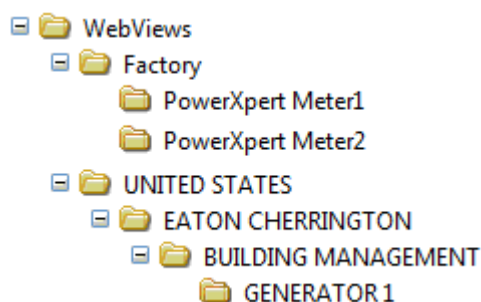
or, if HTTPS is active on the Foreseer Server:

`https://foreseer_server/WebViews`

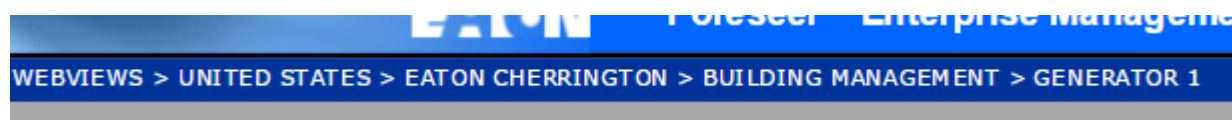
where `foreseer_server` is the domain name or IP Address of the Foreseer Server website. If security is active, operators may be asked to enter a name and password.

Breadcrumbs

Breadcrumbs tell operators where they are in the folder tree. WebViews pages are organized like file folders in your computer file system, which each folder representing a WebViews page. The following shows a simple structure with the "branch" of the "tree" leading from WebViews to GENERATOR 1.



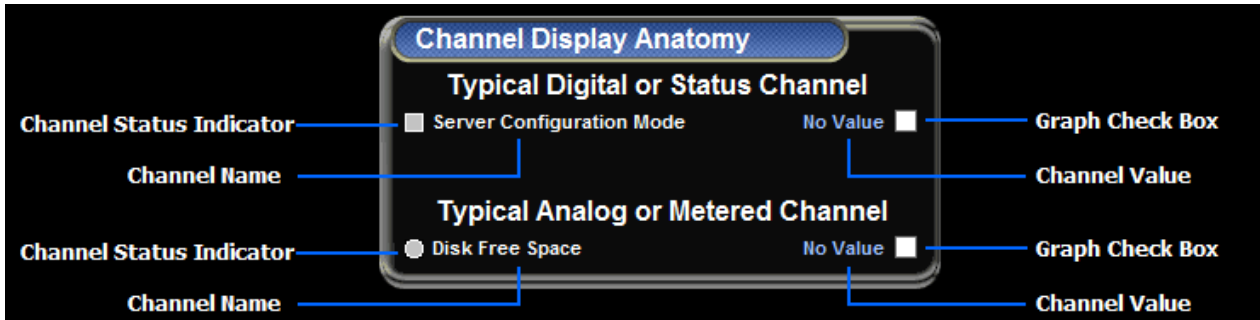
If an operator had navigated to the GENERATOR 1 page, the Breadcrumb would look like this:



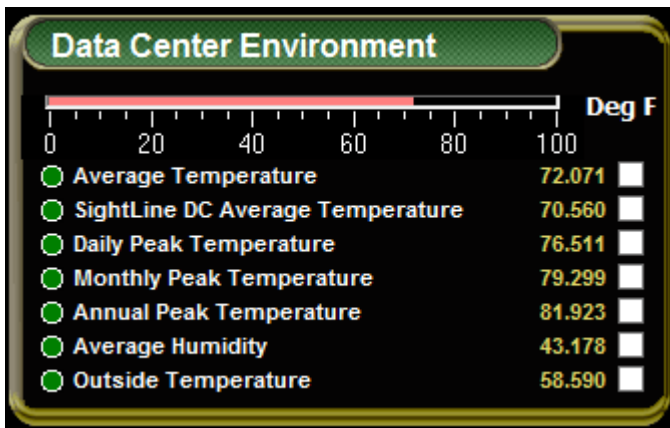
In addition to providing a signpost for navigation, breadcrumbs also help operators in navigating through the system. All of the pages listed in the breadcrumb are hyperlinks, so clicking anything between WEBVIEWS and GENERATOR 1 will jump to that page.

Channel Displays

Channels are usually shown in a display box along with a value, status indicator, and sometimes with a check box that operators can use to select channels for the Graph pop-out.

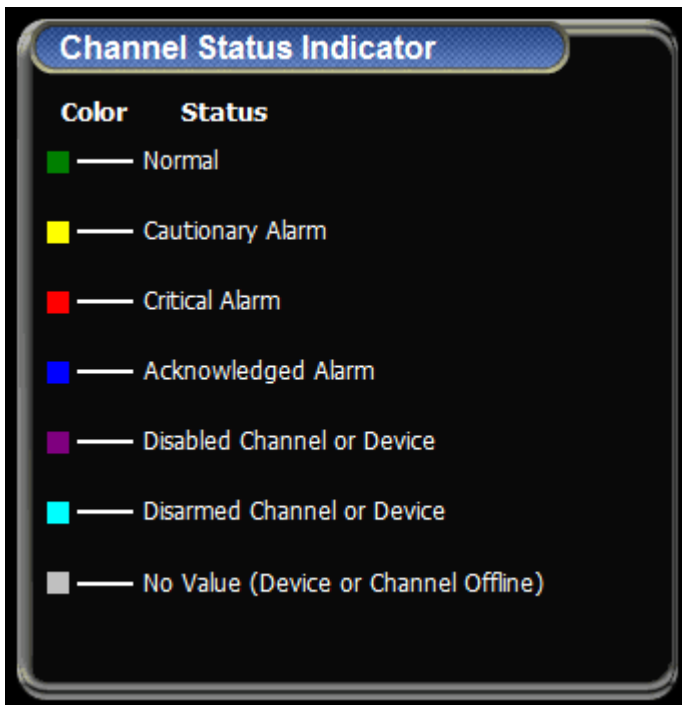


Guide to a typical channel display



Example data channel display

Channel indicators are color coded as follows:



Channel indicator colors

Channel icons change color based on their particular properties settings. The default channel settings employ a "traffic light" color scheme to indicate the following conditions:

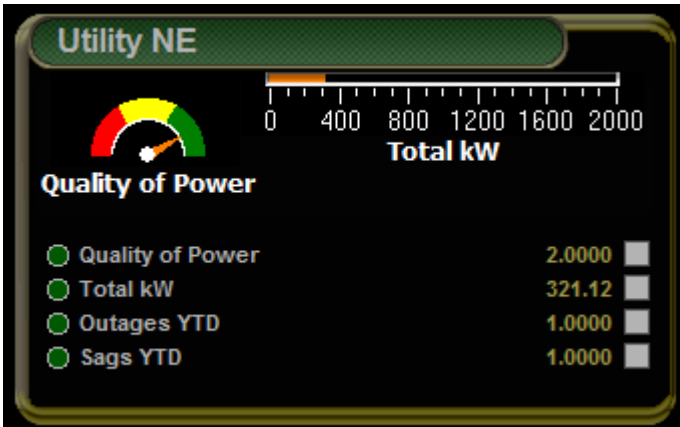
- Green: no error has been detected, data is being acquired, and the channel is operating and within its user-defined alarm limits. This is the "normal" state.
- Yellow: the channel value has exceeded either a Hi or Lo Caution alarm setting.
- Red: the channel value has exceeded a Hi or Lo Critical alarm setting.

Additional colors indicate other status conditions:

- Blue: the alarm was acknowledged.
- Gray: Foreseer lost communication with the Device.
- Cyan: alarm monitoring for the channel, or device, was manually disarmed.
- Purple: the channel, or device, was manually disabled.

Gauges and Other Indicators

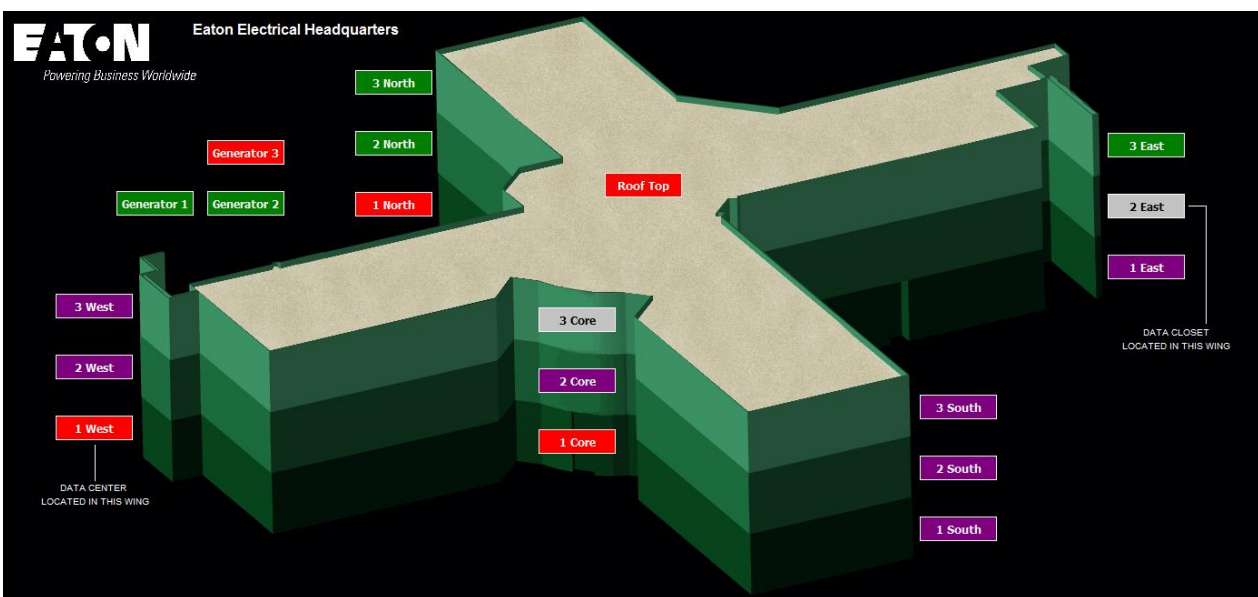
Channel boxes can also contain other types of value indicators, including gauges and "thermometer" displays. These can also be outside of a channel display box.



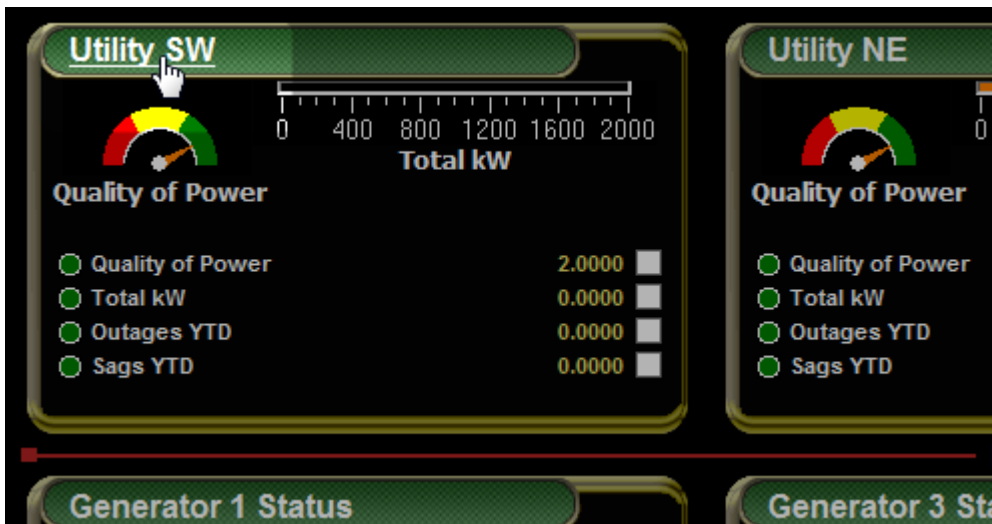
A channel display box with an angular gauge (left) and sliding scale (right)

Folders and Links

Folders are buttons that provide a path to child pages of the current WebViews page. In the following figure, clicking any of the colored buttons (Folders) leads to the respective child WebViews page. Folder colors reflect the highest alarm state of channels and sub-folders contained by that folder.



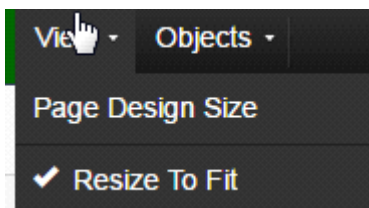
Hyperlinks can lead to any WebViews page in the Foreseer system. They can look like traditional hyperlinks on a web page.



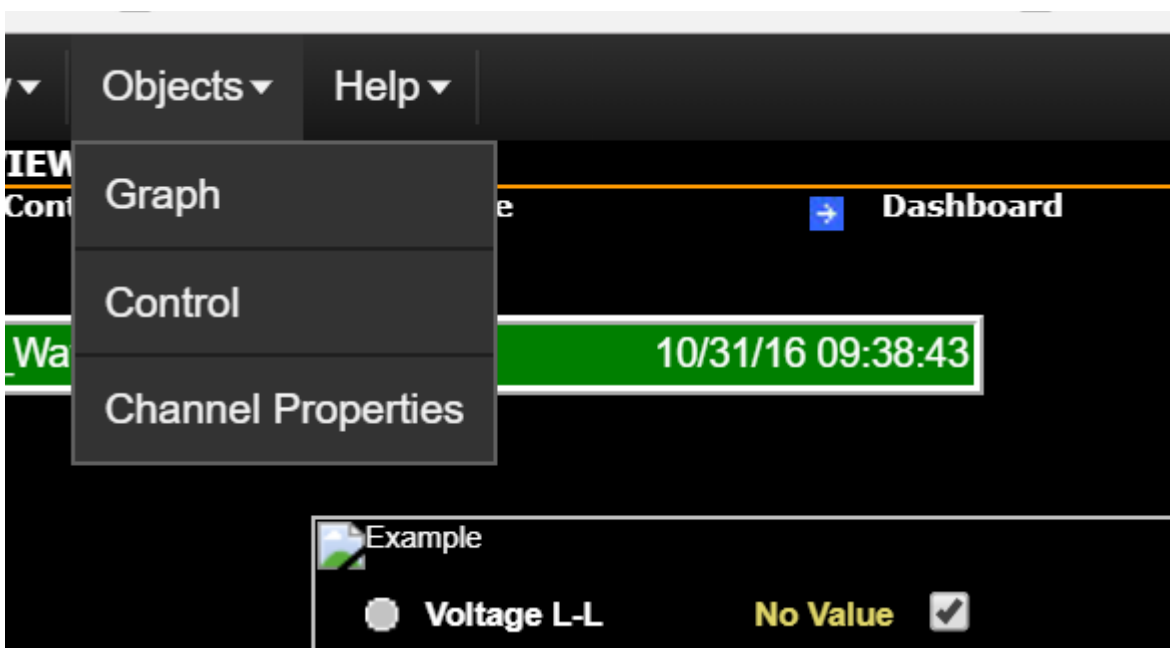
A channel box label that's also a hyperlink

Drop-Down Menus

Hover the mouse cursor over top left of the WebViews page to view the drop-down menus. The View switches the scaling for the display: Page Design Size shows the page as it was originally designed while Resize to Fit scales the page to fit the current browser size.



The Object menu commands launch either the Graph or Controls pop-out for the selected channels. For a single selected channel, you can view the Channel Properties (you can also double-click a Channel to view these). Operators select channels through their check boxes.



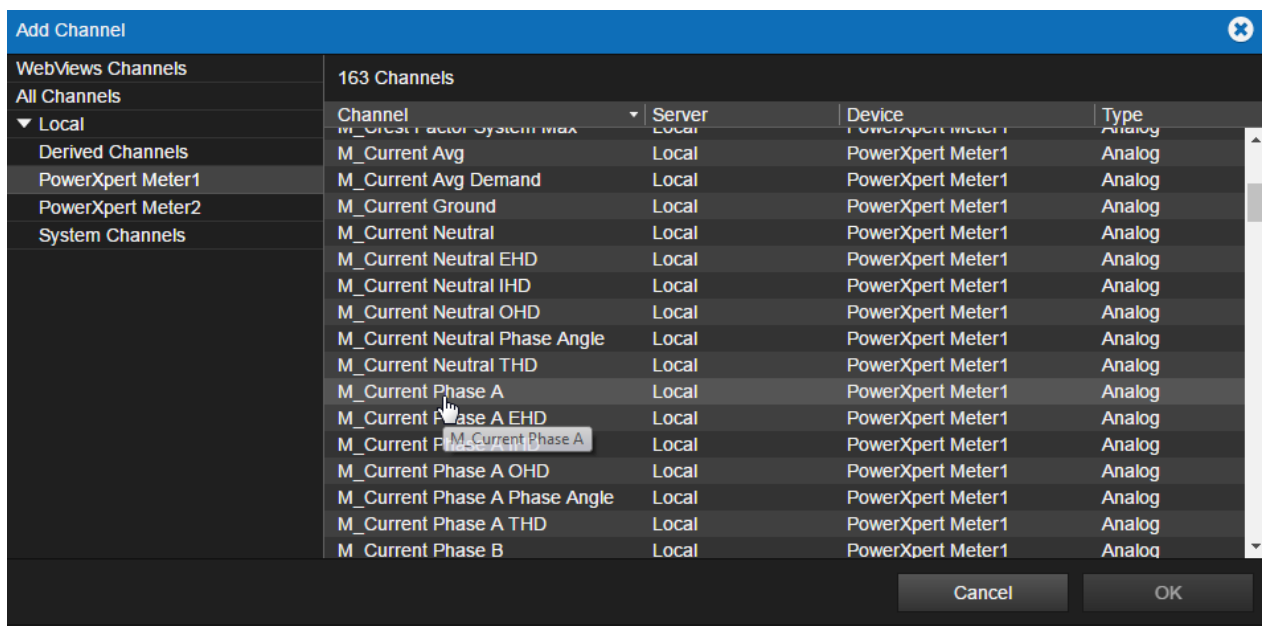
3. Using WebViews Graph

Loading Channels into Graphs

The channel picker appears whenever you click Add Channel in the Graph pop-out. Use the left side to select a channel. Aside from servers, you'll notice a couple of extra choices:

- WebViews channels are only those channels that are already in use, so it's generally a much smaller and more useful list.
- All channels is just what the name implies, a list of all channels from all servers and devices.

You can expand the list under servers (in this case, just the server named Local) to show all of its devices, system channels, and derived channels. Click one of these to select it. Scroll down through the list to the right to find the channel you wish to display in the graph. Once found, click the channel and then click OK.



Channel picker

Removing Plots

1. Select the plots you wish to remove in the legend.
2. Under Channel Options, select Remove Channels.

✔ You cannot remove plots in Real-time mode

Comparing Values

To see the time stamp, channel network path, and value for any data point along a plot, place the mouse pointer over that point.







Using the Cursor

You can use the cursor to compare values on multiple plots. You activate the cursor via the Show menu. The cursor has three modes:

- All channels selected: Channel values appear in the legend at the bottom of the screen. The timestamp beside the cursor marks the cursor's current position on the timeline.
- A single channel selected: the channel values appear beside the cursor.
- None: no cursor is shown on the graph.

When one or all channels are selected, the vertical cursor appears as a solid line over the plots. You can change the appearance of the cursor by clicking Properties. Cursor settings are on the General tab. To move the cursor, either drag it or use the left and right arrow keys. Grabbing a vertical cursor and sliding it back and forth across the X-Axis displays its individual data point values. When multiple channels are selected from the Cursor menu then the individual channel updates at the bottom of the graph window reflect the values at the point of the cursor.

Graph Control Buttons

Control	Action
	Re-enables continuous tracking of Real-time graph data values on all axes.
	Suspends continuous tracking of Real-time data on all axes.
	Shifts the plot to the left or right along the timeline.
	Provides a wider view of the graph and disables tracking to pause the display.
	Provides a narrower view of the graph and disables tracking to pause the display.
	Enlarges the selected area of the graph for closer examination. Simply drag the cursor over the portion of the graph you wish to enlarge then release the mouse button. The action affects all axes. If real-time is selected, tracking is suspended once the mouse button is released.

Properties

The Properties dialog box has three of tabs:

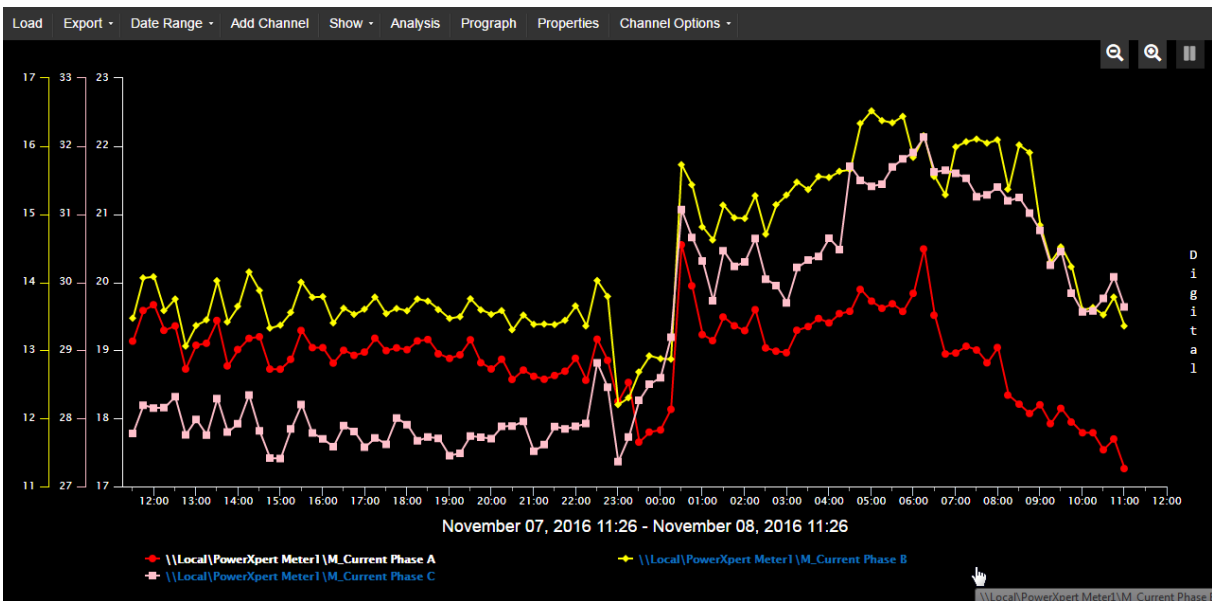
- General Properties - Settings that affect the appearance of the graph as a whole.
- Channel Properties - Settings that affect the appearance of the plot for each selected channel.
- Axis Properties - Settings that affect the appearance of the axes.

Overlaying Plots

You can overlay the plots by adding additional x-axes to the graph. To add an axis for one or more

plots:

1. Select each plot in the legend at the bottom of the graph (it will highlight when selected).
2. Under Channel Options, select Add Axes.



Removing Axes


To remove axes selected in the legend, choose Remove Axes under Channel Options.

Looking at Values Side-by-Side

Click Analysis to compare a number of statistics calculated from the specified range for all of the plots.

Data Analysis							
Start: Nov 09, 2016 10:08		End: Nov 10, 2016 10:08		Span: 1 day			
Channel	Count	Min	Max	Mean	Range	Std.Dev.	Trend
\\LocalPowerXpert Meter1\M_Current Phase A	92	16.98	20.51	18.27	3.531	0.6190	0.3435
\\LocalPowerXpert Meter1\M_Current Phase B	92	13.30	15.74	14.28	2.439	0.5250	1.142
\\LocalPowerXpert Meter1\M_Current Phase C	92	28.89	31.91	30.17	3.026	0.8948	1.876

Save Data Close

-  You can download the contents of the Data Analysis window as a .csv file by clicking Save Data.

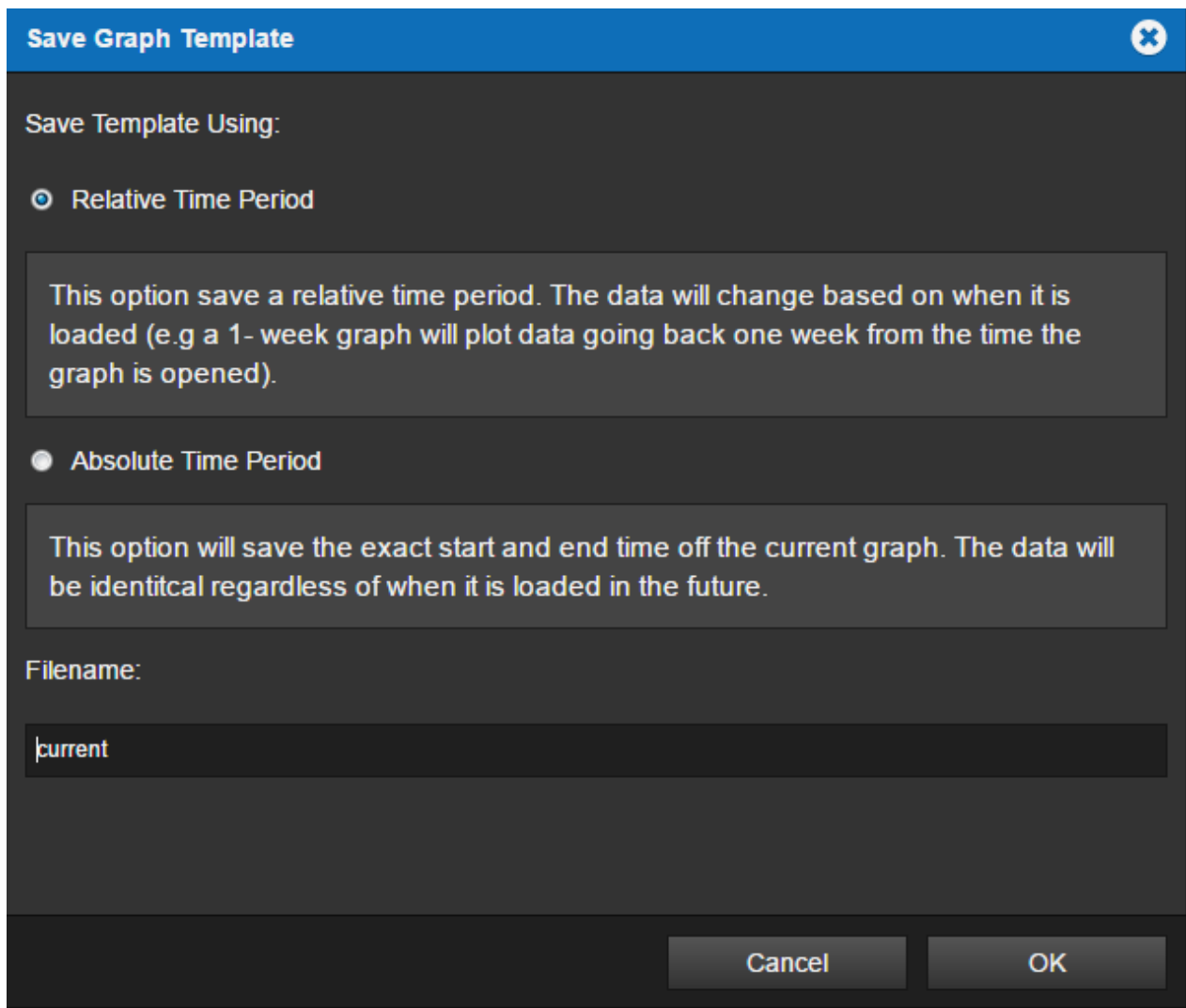
Exporting Graphs and Graph Data

Through the Export menu, you can:

- Export the graph data as a .csv file.
- Save a .png graphics file of the graph.
- Print the graph.

Saving and Loading the Graph Configuration

You can save the current graph settings, including channels, additional axes, and time range, through Save Configuration on the Export menu. You can select to either have the time period considered relative to the current time that the configuration is loaded or as an absolute time period (in other words, a snapshot of the specified time range). The configuration template file is automatically saved with .json extension. Files are saved in the \Eaton Corporation\Foreseer\WWW\Support\UserFiles\GraphTemplates folder.



Loading a Graph Configuration File

You load a configuration template file by clicking Load. The configuration file must be in the \Eaton Corporation\Foreseer\WWW\Support\UserFiles\GraphTemplate folder and have a .json extension (for configuration files created in version 7 of Foreseer) or XML for legacy configuration files. When you load a legacy file, it's converted into the current JSON format and the original file is given a .xml.bak extension.

Projecting values with Prograph and Sightline

Prograph adds a linear projection line for each channel, based on a sum of least squares linear regression, that projects values for a period equal to the graph range. For example, if the range is one week the line will project values one week forward. If the range is two weeks, the line will project future values two weeks forward, and so on. Longer ranges (six months or more) provide better projections.

Foreseer Sightline

You can also use a Prograph Trend to provide an estimate when an alarm may occur. To take advantage of this feature you'll need to create a user-defined Channel and add a user-defined

equation with the TrendChannel function. With Foreseer Sightline, you can set an alarm based on a value projected into the future, providing a powerful tool that can help you react before an actual alarm condition is reached.

4. WebViews Waveforms

Using the Waveform Control

Some devices, such as the Eaton Power Xpert Meter, can provide Waveform data associated with a power event. This event must be defined as a waveform at the device. Waveform data can be viewed using a linked Waveform object where each event is presented as a row in a table.

14 Days ▾	Refresh	Capture	Real-Time	Phasors			
Date/Time	▲ Trigger			SEQ	Cycles	Rate	
02/07/17 23:39:57.58	Voltage Sag AN			--	12	128	
02/07/17 23:39:41.63	Voltage Sag AN			--	12	128	
02/07/17 23:39:18.04	Voltage Sag AN			--	12	128	
02/07/17 23:38:56.64	Voltage Sag AN			--	12	128	
02/07/17 23:37:05.32	Voltage Sag AN			--	12	128	
02/07/17 23:29:46.24	Voltage Sag AN			--	12	128	
02/07/17 23:29:45.91	Voltage Sag AN			--	12	128	
02/07/17 22:40:26.59	Voltage Sag AN			--	12	128	
02/07/17 22:40:26.50	Voltage Sag AN			--	12	128	
02/07/17 22:37:15.28	Voltage Sag AN			--	12	128	
02/07/17 22:36:53.51	Voltage Sag AN			--	12	128	
02/07/17 21:43:28.06	Voltage Sag AN			--	12	128	
02/07/17 21:43:27.82	Voltage Sag AN			--	12	128	
02/07/17 21:26:59.87	Voltage Sag AN			--	12	128	
02/07/17 20:47:06.45	Voltage Sag AN			--	12	128	
02/07/17 20:27:03.45	Voltage Sag AN			--	12	128	
02/07/17 20:27:02.84	Voltage Sag AN			--	12	128	
02/07/17 20:24:00.72	Voltage Sag AN			--	12	128	
02/07/17 20:23:37.51	Voltage Sag AN			--	12	128	
02/07/17 20:22:55.82	Voltage Sag AN			--	12	128	
02/07/17 19:36:55.38	Voltage Sag AN			--	12	128	
02/07/17 19:36:37.56	Voltage Sag AN			--	12	128	
02/07/17 19:33:09.44	Voltage Sag AN			--	12	128	
02/07/17 18:58:51.91	Voltage Sag AN			--	12	128	
02/07/17 18:57:17.97	Voltage Sag AN			--	12	128	

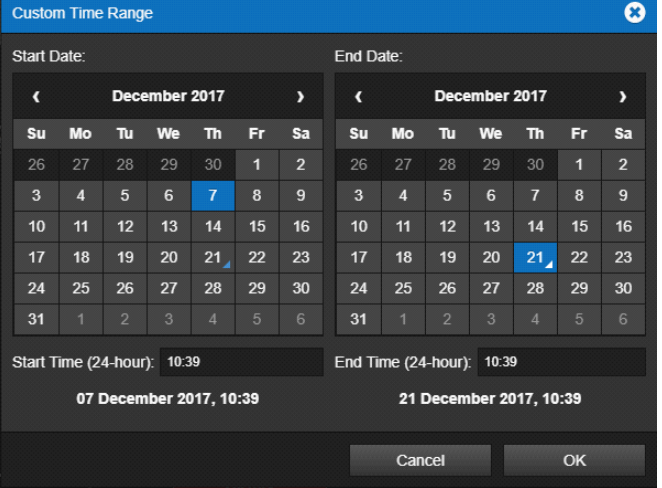
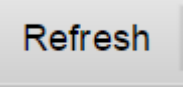
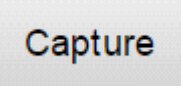
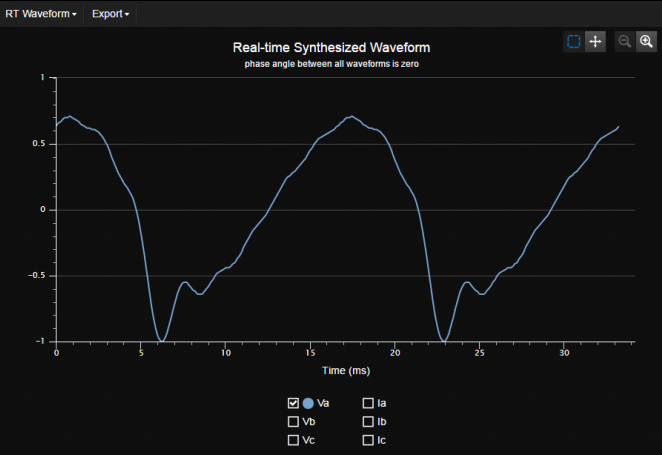
Waveform Control, Showing Various Events

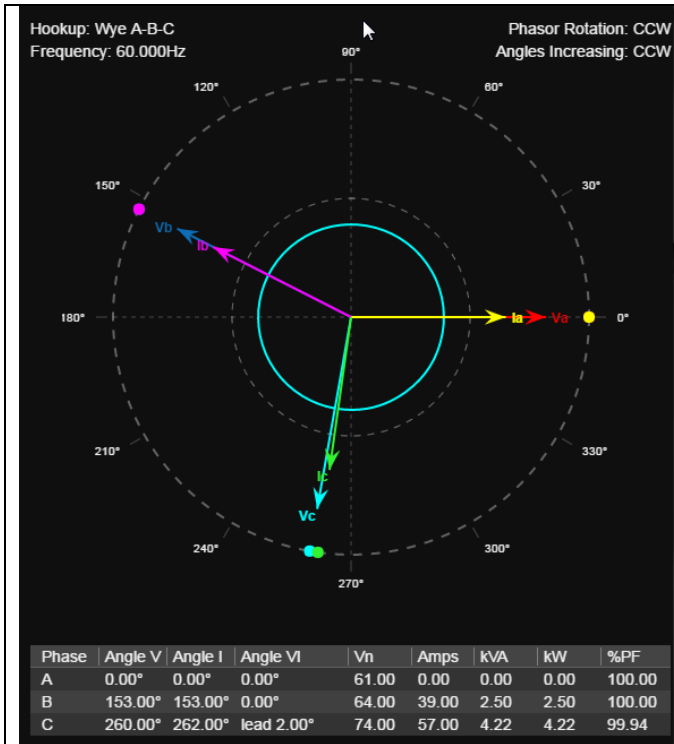
If an event occurs on the device linked to the Waveform object, the event is logged as a single row. Each row specifies:

- The date and time that each event was captured.

- The condition that triggered the event.
- The sequence in which the events were captured.
- The number of cycles in the waveform.
- The rate at which the event was captured.

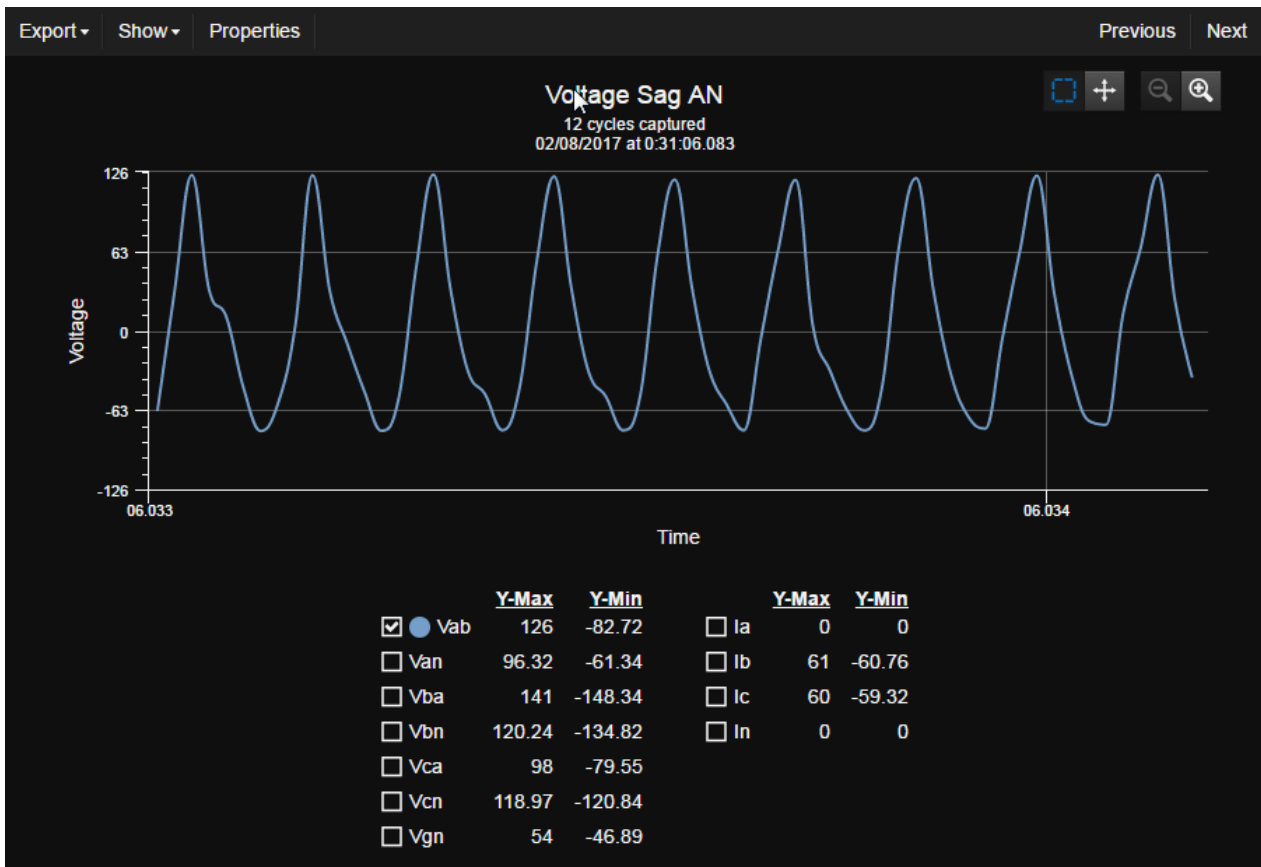
You can control what events are displayed in the viewer through the viewer toolbar:

Control	Action
	<p>The date list provides a range preset time spans. All these time spans consider the current time as the end time. Custom launches a pair of calendar controls you can use to select a beginning and end date and time.</p>
	<p>The Refresh button adds any new events that haven't yet been logged to the list.</p>
	<p>The Capture button initiates a manual waveform capture on the device hardware.</p>
	<p>The Real-time button launches a real-time display of the waveform data. This functions only if the linked device supports real-time data.</p>



The Phasors button launches a phasor display window.

Using the Waveform Viewer Pop-out







You can launch the waveform viewer pop-out to examine a particular event by clicking its corresponding row in the Waveform object. The viewer plots all of the data points in the captured waveform, and provides check boxes to add or remove plots from various voltage and current channels. Which channels are included is device dependent.

Waveform Viewer Window

You can view the previous and next waveform events in the list by clicking either the Previous or Next buttons.

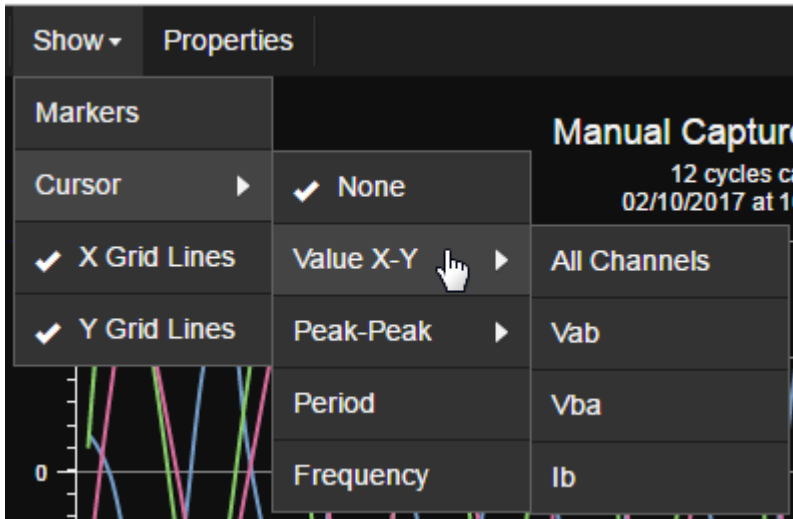
Zooming and Scrolling

Control	Action
	Use the Zoom box to define a custom time range by dragging a selection over the plot. Selecting this function disables the Scroll button. Note that the resolution of the data does not update, press the "Refresh Data" button after zooming to update the resolution. This control doesn't work on the Apple iPad or other touch interfaces.
	Zoom In provides a narrower view of the waveform. Each time you zoom the time range is reduced by a factor of 2.
	Zoom Out provides a wider view of the graph. Each time you zoom the time range is expanded by a factor of 2.
	Use Scroll drag the plot forward or backward along the timeline. Selecting this function disables the Zoom button.

Customizing Plots with the Show Menu

The Show menu commands add or remove the:

- Markers, which highlight each recorded data point.
- Cursor, which provides a vertical line that you can use to examine data at each time increment. What you can use the cursor to show is (mostly) a combination of which channels are selected and the options you select in the Cursor fly out menu:
 - Value X-Y shows the X and Y axis values at the cursor location for either the selected channel in the plot or all channels. The All Channels selection behaves a little differently: instead of showing the X and Y axis values near the cursor, the values are shown in the list of channels below the plot. Moreover, the value at Y- value at the cursor position is shown for all channels, even if they aren't currently displayed in the plot. You can remove the cursor by selecting None.
 - Peak-Peak places two cursors on the plot, with the value showing the difference between their positions. Simply position one at the positive peak and the other at the negative peak and the value is the difference between them. If more than one type of units is in the plot, you can select the one to measure through the Peak- Peak fly out.
 - Period shows the time difference between the two cursors.
 - Frequency shows the frequency difference between the two cursors.
 - None removes whatever cursor is active.
- X and Y Grid Lines toggles lines marking major tick marks on the X and Y axes.



Example Show menu

Export

You can export waveform data in three ways:

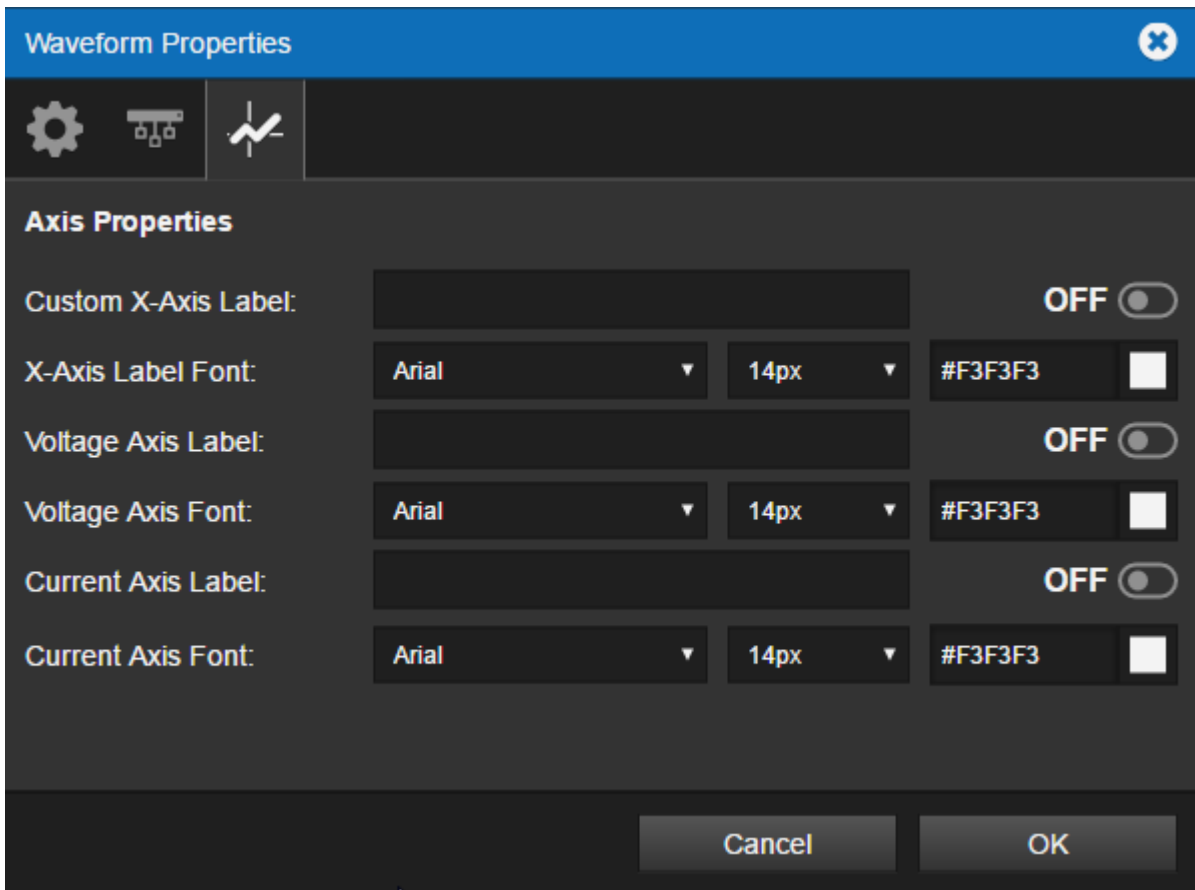
- Trace data as a CSV file.
- The current plot as a graphics file.
- The current plot sent to your printer.

	A	B	C	D
1	02/10/2017	Vab	Vba	Ib
2	52.091	128	-62.74	-33.64
3	52.091	127.44	-57.73	-34.42
4	52.091	124.63	-52.15	-34.42
5	52.091	121.7	-47.65	-33.93
6	52.091	118.27	-42.58	-33.05
7	52.091	115.22	-37.64	-31.58
8	52.091	110.73	-33.44	-31.68
9	52.09101	106.18	-28.14	-30.7
10	52.09101	101.07	-23.06	-28.54
11	52.09101	95.21	-17.99	-27.26
12	52.09101	87.66	-12.11	-26.18
13	52.09101	79.49	-7.98	-25.3
14	52.09101	70.08	-3.38	-22.64

Trace data loaded in Microsoft Excel

Properties

Use the Properties menu to fine tune the look-and-feel of a waveform. With it, you can change the colors, fonts, line styles and visibility of the Waveform Viewer, channels, and plots.

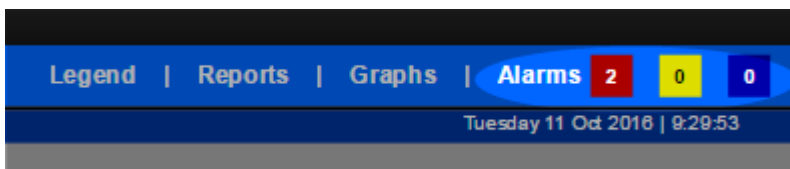


Waveform Properties showing the Axis Properties options

5. Responding to Alarms

Alarm Reporting

When Foreseer detects an alarm condition it's added to the current alarm count (shown in the upper right corner of the browser display). The Alarm counts show active alarms divided into Critical (red), Cautionary (yellow) and Acknowledged (blue) totals. This lets you address multiple alarm conditions while reducing the possibility that serious problems will go undetected.



Current Alarm Count

Channel icons change color based on their particular properties settings. The default channel settings employ a "traffic light" color scheme to indicate the following conditions:

- Green: no error has been detected, data is being acquired, and the channel is operating and within its user-defined alarm limits. This is the "normal" state.
- Yellow: the channel value has exceeded either a Hi or Lo Caution alarm setting.
- Red: the channel value has exceeded a Hi or Lo Critical alarm setting.

Additional colors indicate other status conditions:

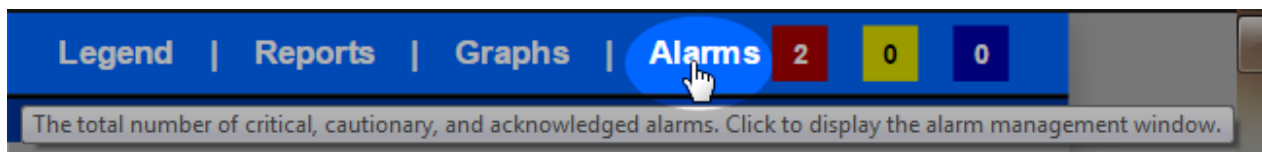
- Blue: the alarm was acknowledged.
- Gray: Foreseer lost communication with the Device.
- Cyan: alarm monitoring for the channel, or device, was manually disarmed.
- Purple: the channel, or device, was manually disabled.

Because folders are "nested," the status of their channels is propagated up through the folder structure. If a Critical alarm is detected on a deeply nested WebViews page, all of the folders in the path leading to the page become red to show the Critical alarm. The alarm color "bubbles up" through the folder objects all the way to the top level WebViews page.

By default, an alarm is latched and continues to show until a user acknowledges the alarm and the channel is rearmed (either by user action or if the Ack Holdoff period expires).

Alarm Management Window

You can launch the Alarm Management window by clicking the Alarms link next to the alarm count on any WebViews page.



Alarm Link

The Alarm Management window provides summary information on all currently reported alarms. The State Indicator (color bar) at the left reflects the highest reported alarm state. You can sort the alarm list by State, Server, Device, Channel, Priority, Date/Time, Alarm Value or Current Value.

State	Server	Device	Channel	Priority	Date/Time	Alarm Value	Current Value
	Local	PowerXpert Meter1	M_Current Phase A	9999	11/21/16 09:27:00 AM	17.75	17.754
	Local	PowerXpert Meter1	M_Current Phase B	9999	11/21/16 08:48:48 AM	21.28	15.229
	Local	PowerXpert Meter1	M_Current Phase C	9999	11/21/16 08:48:48 AM	33.54	30.054
	Local	System Channels	System Alarm	9999	11/21/16 08:48:36 AM	Alarm	OK

Alarm Management Window

Acknowledging an Alarm

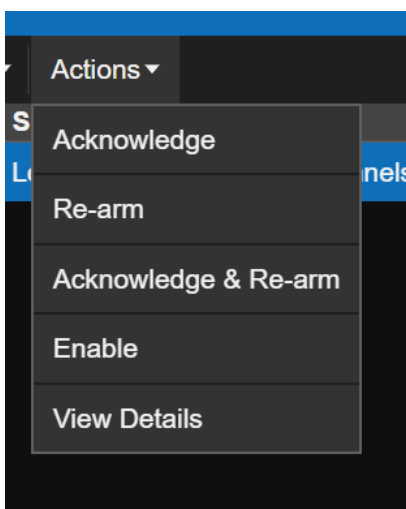
To acknowledge an alarm:

1. Click the Alarm link to display the Alarm Management window.
2. Locate the Channel in the alarm list and click it.
3. In the Actions list, choose either Acknowledge or Ack & Rearm (which also allows Foreseer to monitor the channel for new alarms). Ack & Rearm acknowledges the alarm and rearms the channel. Rearm forces the channel to Normal (clears the alarm condition). If the channel is still in alarm, it will return as a new alarm.

Acknowledging an alarm causes Foreseer to:

- Stop declaring this as an active alarm unless the value rises to the next alarm threshold (for example, from cautionary to critical). This suspension is maintained until the channel is rearmed or the Ack Holdoff period (one hour by default) expires or the channel. However, the channel's value continues to be calculated and archived.
- Add the acknowledgment to the Alarm Log for a completed alarm (one that has transitioned back to Normal). The entry includes the time and date it was entered, as well as any associated Notes.
- Subtract the alarm from the Cautionary or Critical alarm count and add it to the Acknowledged total.

An acknowledged alarm will stop Message Management from escalating a notification (if there are delayed entries).



- ✔ Acknowledging applies to latched alarms. Non-latched alarms return to their normal state automatically after the alarm condition is gone.

Adding a Note

When you respond to an alarm either through the Actions list or Alarm Details, you'll be prompted to add a note. A Note is a 256 character comment about the alarm and any actions taken. Notes are stored in the database and can be reviewed through the Notes Report. Foreseer automatically logs the following information about the alarm as part of a note:

- Channel name
- Action selected (Ack, Rearm, etc.)
- IP address of the computer from which the action was selected
- Time the action was taken.

Rearming a Channel

After a channel in alarm is acknowledged, Foreseer won't declare new alarms on that channel until the channel is either rearmed or the Ack Holdoff interval (an hour by default) expires. To rearm a channel:

1. Click the Alarm link to display the Alarm Management window.
2. Locate the Channel in the alarm list and click it. You can select multiple channels using Shift-click or Ctrl-click.
3. In the Choose an action list, choose Re-arm.

Managing an Alarm Through the Details Window

The Details window is a one-stop utility for managing a single alarm. To use it, select a single alarm in the Alarm Management Window and then click the Details button. Aside from providing an overview of an alarm, you can acknowledge, rearm, and Ack & rearm. If you have disabled the channel, you can also enable it from here. There's also a Notes field.

Alarm Details ✕

Acknowledge
Re-Arm
Ack & Rearm
Enable

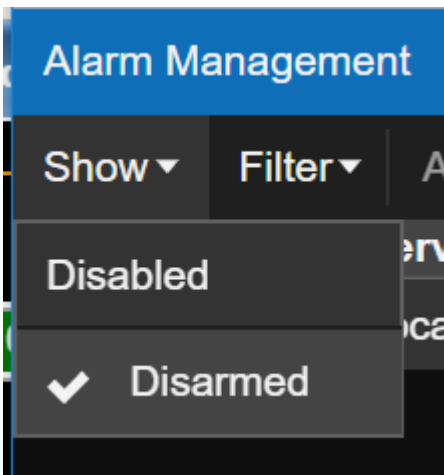
Channel:	M_Current Phase C
Device:	PowerXpert Meter1
Server:	Local
Alarm State:	Caution
First Time:	12/19/17 02:28:05 PM
First Value:	27.03
Current Value:	27.331
Priority:	2000
Message:	

Enter Note here...

Notes

Using the Quick Filters in the Show Menu

Show and Hide Disarmed or Disabled channels provides some of the most commonly used "filters" which you can use to limit what's shown in the Alarm Management window.



Using Alarm Filters

Alarm Filters provides fine-grained filtering capabilities you can use to hone in on just the alarms you wish to see. This can be useful if a major incident occurred in your power system that triggered multiple alarms on multiple devices. With Alarm Filters, you can exclude or include alarms by priority, Foreseer servers, devices, and/or individual channels. You can also save filters to a file, which you can load if you need that filter again.

You can filter on either alarm priority or the network paths, with each path defining a Foreseer server, device, or channel. When selecting network paths, you can either select them from the network tree or enter the network path directly in the list. If you choose to enter network paths directly, you can use a powerful set of wild cards to match multiple devices. Wild cards can be a powerful tool to retrieve just the information you need from a large set of alarms.

Hiding Alarms by Priority

You can use the Priority Filter to hide alarms that are:

- Less than or equal to a priority value.
- Greater than or equal to a priority value.
- Equal to a priority value.
- Not equal to a priority value.

For the priority filter to take effect, you must toggle it ON. It automatically toggles to ON when you select a filter.

Alarm Filters
✕

!

Priority Filter ON

When using multiple filters at the same time, alarms are filtered by priority first. If the alarm is not suppressed (or excluded) by its priority, Device/Channel Filters tab is processed next. Priority is a value between 1 to 9999 with 1 being the highest priority and 9999 the lowest.

Hide Alarms Where:

- Priority ≤
- Priority ≥
- Priority =
- Priority ≠

Cancel
Load Filter
Save & Apply

Hiding or Including Alarms From Specific Servers, Devices, and Channels

To hide alarms for specific servers / devices / channels, add them to the Hide list. Alarms for devices / channels in the Exceptions list will be shown, even if their parent alarms are being hidden.



Re-Using Filters

You can save your list of filters to a file, which you can then reload whenever you wish. The files are saved in an XML format.

To save your filter set:

1. On the Alarm Filters dialog box, click the Save & Apply button.
2. Give the filter settings file a name (it will automatically have an extension of .xml).
3. Click the Save & Apply button.

To load a filter file:

1. On the Alarm Filters dialog box (or from the Filter menu in the Alarm Management window), click Load Filter.
2. Select the filter settings file.
3. Click the Load button.

6. Using WebViews Reports

WebViews Reports furnish important insights into system performance. Some WebViews Reports are available in two formats: standard and tab-delimited data. The tab-delimited format is especially

useful for importing into Microsoft Excel, Microsoft Word, and other applications.

This chapter explains how to obtain reports from the Web Server.

- ✔ You cannot add more than 150 devices through a single list via the Web Configuration utility. If you must load more than 150 devices, use multiple lists or use the device list feature in either the Device Config application or the Foreseer server.

Generating Reports

Click on the Reports link on any WebViews page to display the Reports window.



The pop-up has the following reports:

- Alarm History (1 Day, 7 Days, or 30 Days) is a series of reports listing all alarms detected over the past day, week, month or specified time period. These three report formats consist of all alarm times, Devices and text recorded within the respective interval. If no alarms were detected during the period, that report will be blank. These are available in tabbed format.
- Alarm History (Custom) has a selection of time intervals and is similar to the other Alarm History reports *except* that it does not list alarms that are currently active or unacknowledged.
- Audit History (Custom) provides a history of configuration changes to the Foreseer System. This is *not* available as a tabbed report.
- Channel Data Report (30, 60, or 90 Day) provides minimum, maximum, and average values for each channel from the selected device over the selected time period. The default format is tab-delimited.
- Channel Report provides detailed information about each channel from each device installed in the "local" server. You can select an individual device if you wish. This report is available in tabbed format.
- Log File reports all recorded events since the last Foreseer Server system reset. This report is *not* available in tabbed format.
- Previous Log File reports all events recorded in the previous Foreseer Server session. This report is not available in tabbed format.
- Notes History (1 Day, 7 Days, 30 Days, or Custom) reports notes logged over the last day, week, month, or specified time period. This report is available in tabbed format.
- Sequence of Events (custom) provides events logged by sequence of events recorders. This report provides a series of high-resolution (in time) events in time stamp order. The standard format is tab-delimited. For information about support for additional recording devices, contact the Power Systems Automation group at Eaton.
- System Configuration lists all configured devices, their operational parameters, and current

device driver software version. The standard format is tab-delimited.

- System Up-Down reports each time the Web Server was launched and terminated. The default format is tab-delimited.

Reports ? ✕			
Report Type	Available Reports		
Alarm History [1 Day]	09/20/16 12:26:04 [876 bytes]	09/20/16 12:26:03 [876 bytes]	09/20/16 12:26:02 [876 bytes]
Alarm History [30 Day]	09/30/16 13:01:22 [17446 bytes]		
Alarm History [7 Day]	10/03/16 13:34:07 [1418 bytes]	10/03/16 13:34:06 [1418 bytes]	10/03/16 13:34:04 [1418 bytes]
Alarm History [Custom]			
Audit History			
Channel Data			
Channel	09/15/16 10:54:26 [77078 bytes]		
Log File	09/21/16 10:46:40 [5513 bytes]	09/15/16 11:11:07 [4574 bytes]	09/15/16 11:11:07 [4574 bytes]
Notes History [1 Day]			
Notes History [30 Day]			
Notes History [7 Day]			
Notes History [Custom]			
Previous Log File			
Sequence of Events	10/03/16 15:23:52 [243 bytes]		
System Configuration			
System Up-Down	10/03/16 15:24:44 [3676 bytes]		

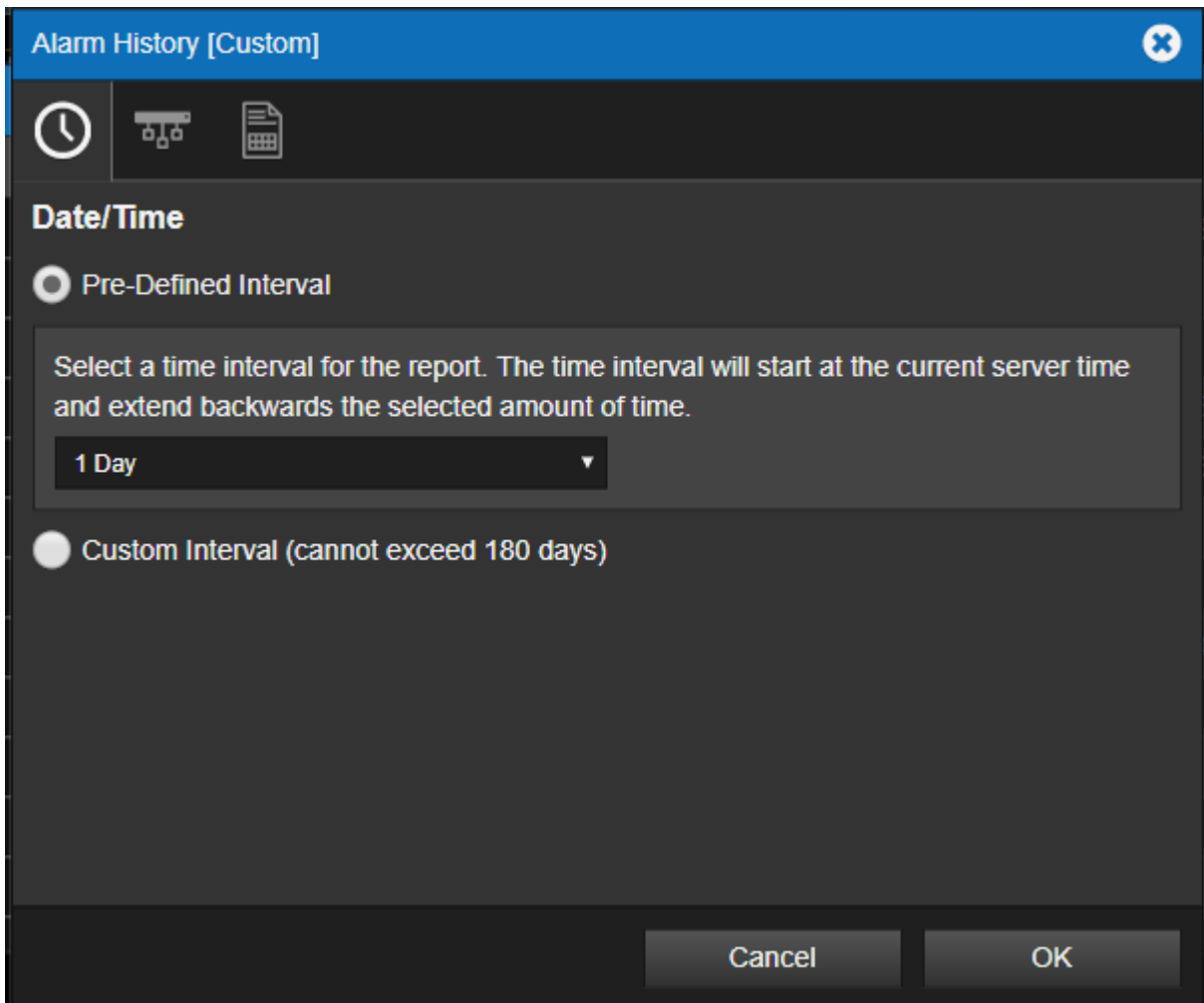


To generate a report, simply click the listing under Report Type. If a choice in formats or time intervals is available, you'll be prompted to choose.

Setting up a Custom Report

Custom Reports launches a filtering dialog box through which you can use to:

- Filter by either predefined time periods or custom time periods with specified start and end dates and times.
- Filter by Foreseer server, device, channel or string.



Setting the Time Interval

You can select a predefined interval from the menu or create your own using Custom Interval. Selecting Custom Interval launches calendar controls and a time picker so that you can set the beginning and end dates and times.

Selecting Channels

You select the servers, devices, and channels the report will include through the Device/Channel Selection tab. There are two ways to select these:

- Interactively, through the server/device/channel picker. Access this by clicking the + sign.
- Using the network path. This can be a very quick and powerful method because you can include a number of regular expression-like wild-cards in the network path.

Reports ? ✕			
Report Type	Available Reports		
Alarm History [1 Day]	10/10/16 14:28:36 [4622 bytes]	09/20/16 12:26:04 [876 bytes]	09/20/16 12:26:03 [876 bytes]
Alarm History [30 Day]	10/13/16 09:12:40 [88052 bytes]	09/30/16 13:01:22 [17446 bytes]	
Alarm History [7 Day]	10/03/16 13:34:07 [1418 bytes]	10/03/16 13:34:06 [1418 bytes]	10/03/16 13:34:04 [1418 bytes]
Alarm History [Custom]	10/13/16 12:56:19 [76776 bytes]	10/13/16 09:30:32 [79366 bytes]	10/13/16 09:28:29 [79366 bytes]
Audit History			
Channel Data	10/06/16 14:21:49 [1049 bytes]	10/06/16 14:02:24 [9140 bytes]	10/06/16 13:48:40 [18044 bytes]
Channel	10/12/16 14:57:03 [77138 bytes]	10/06/16 13:49:10 [9118 bytes]	10/06/16 11:18:01 [68965 bytes]
Log File	10/06/16 13:12:29 [12365382 bytes]	10/05/16 14:17:58 [3747001 bytes]	10/05/16 14:16:52 [3721578 bytes]
Notes History [1 Day]			
Notes History [30 Day]			
Notes History [7 Day]			
Notes History [Custom]			
Previous Log File	10/05/16 08:56:02 [4088200 bytes]	10/05/16 08:56:02 [4088200 bytes]	
Sequence of Events	10/06/16 13:14:16 [167 bytes]	10/03/16 15:23:52 [243 bytes]	
System Configuration	10/04/16 15:26:51 [1494 bytes]	10/04/16 15:26:41 [1985 bytes]	
System Up/Down	10/05/16 14:18:11 [3800 bytes]	10/03/16 15:24:44 [3676 bytes]	

Once generated, each report becomes a link to the right of the report button. Click the report link at any time to view that particular report. You have the choice of either opening the report in your browser or downloading it for local viewing. As reports are generated, older links move to the right. Only the three most recent reports are retained.

Exporting Report Data

You can export data from either regular or tabbed reports to a file on your local computer, which you can then import into a third-party application (such as a spreadsheet, database, etc.). Tab-delimited reports are more suited for this as most third-party applications provide filters to create tabular data from tab-delimited ASCII files.

To save a report as an ASCII file:

1. In the report browser window, click the File menu and choose Save As...
2. In the Save web page dialog box, select a folder and filename for the file.
3. In the Save as Type list, select Text File (*.txt).
4. Click the Save button.

The saved file can be opened from any text viewing application or imported into a spreadsheet application such as Microsoft Excel.

7	First Alarm Time	Server Name	Device Na	Channel N	Why Norm	Time Normal	Time Critical	Critical Value	Time Caution	Caution V	Time Ackr	Time Disarmed
8	7/27/2018 12:07	Local	System C	Server Cei	Return to	7/27/2018 12:09			7/27/2018 12:07	Active (FALSE)		
9	7/12/2018 18:52	Local	System C	System AI	Database	7/27/2018 12:06	7/12/2018 18:52	Alarm (FALSE)				
10	7/12/2018 17:59	Local	System C	Database	Return to	7/12/2018 17:59	7/12/2018 17:59	Disabled (FALSE)				
11	7/12/2018 13:17	Local	System C	Database	Database	7/12/2018 13:17	7/12/2018 13:17	Disabled (FALSE)				
12	7/12/2018 13:17	Local	System C	Server Cei	Return to	7/12/2018 13:17			7/12/2018 13:17	Active (FALSE)		
13	7/12/2018 13:17	Local	System C	Server Cei	Database	7/12/2018 13:17			7/12/2018 13:17	Active (FALSE)		
14	7/12/2018 13:16	Win-apache	System C	Server Cei	Database	7/12/2018 13:16	7/12/2018 13:16	1				
15	7/12/2018 13:15	Local	System C	Server Cei	Return to	7/12/2018 13:16			7/12/2018 13:15	Active (FALSE)		

7. Understanding Foreseer Alarms

Foreseer has two alarm behaviors:

- Unlatched alarms, which report an alarm only so long as the alarm condition is present.
- Latched alarms, which stay in the alarm state until the alarm is acknowledged by a user.

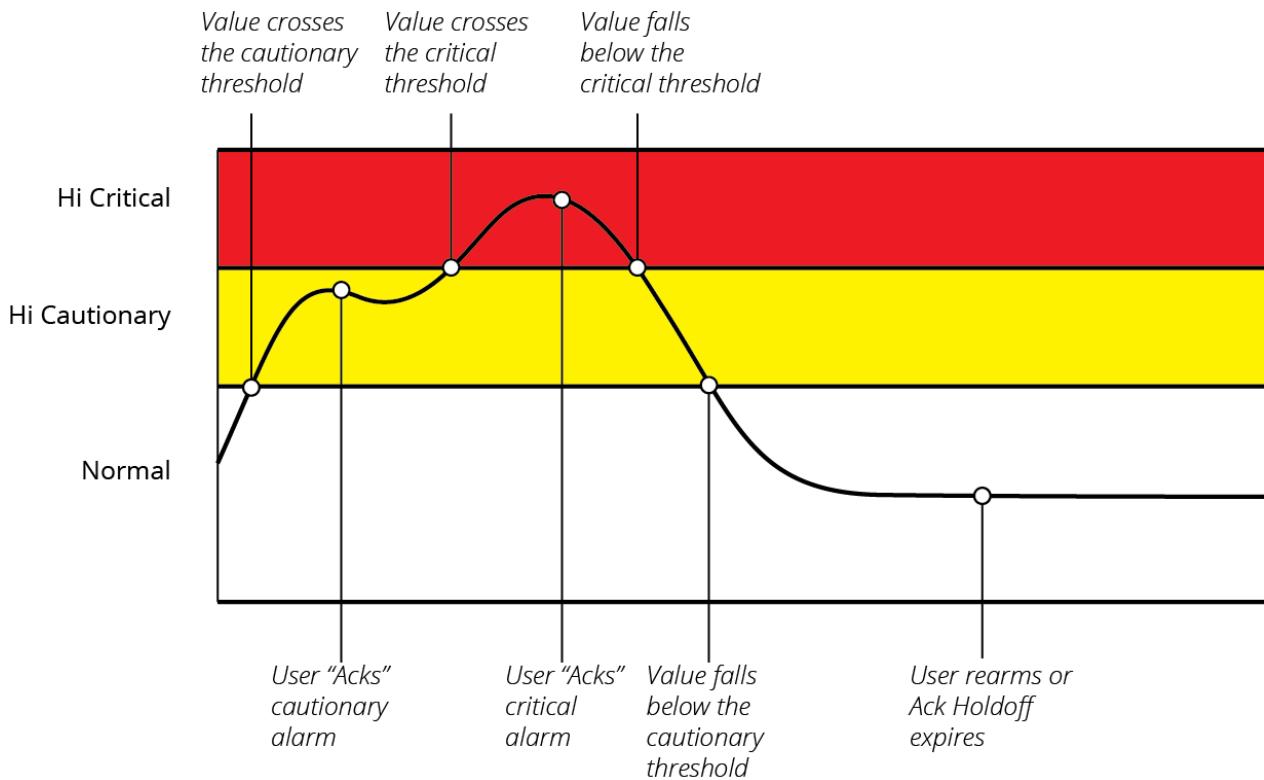
By default, all alarms in Foreseer are latched except for device communication channels. This requires Foreseer users to acknowledge the alarm and rearm the channel to clear an alarm. It also gives users the ability to enter a note in Foreseer with details about the alarm and what was done. Using latched alarms reduces the chance that your site will miss potential major problems. When alarms are unlatched, they return to a normal state without any human interaction. This makes it possible to miss major problems, especially for short-lived conditions. On the other hand, if you have a large Foreseer system you may find that reacting to multiple, related alarms (which can potentially number in the hundreds or more) can be quite challenging.

However, unlatched alarms provide better data concerning when an alarm condition clears. With unlatched alarms, the time stamp for "return to normal" in the log is the actual time the condition changed in the Foreseer server. Latched alarms only provide the time that the channel was rearmed as the logged "return to normal" time. So, with a latched alarm you can't tell when the channel value actually returned to normal.





You can both reduce the chances of missing an alarm and get more accurate "return to normal" data if you use the Foreseer Message Manager in conjunction with unlatched alarms. The Message Manager sends alerts to designated personnel about both latched and unlatched alarms.

- ✓ Message Manager requires server-level configuration not available through WebViews. Operators should contact their Foreseer Sever administrator for assistance with Message Manager.

Latching Example

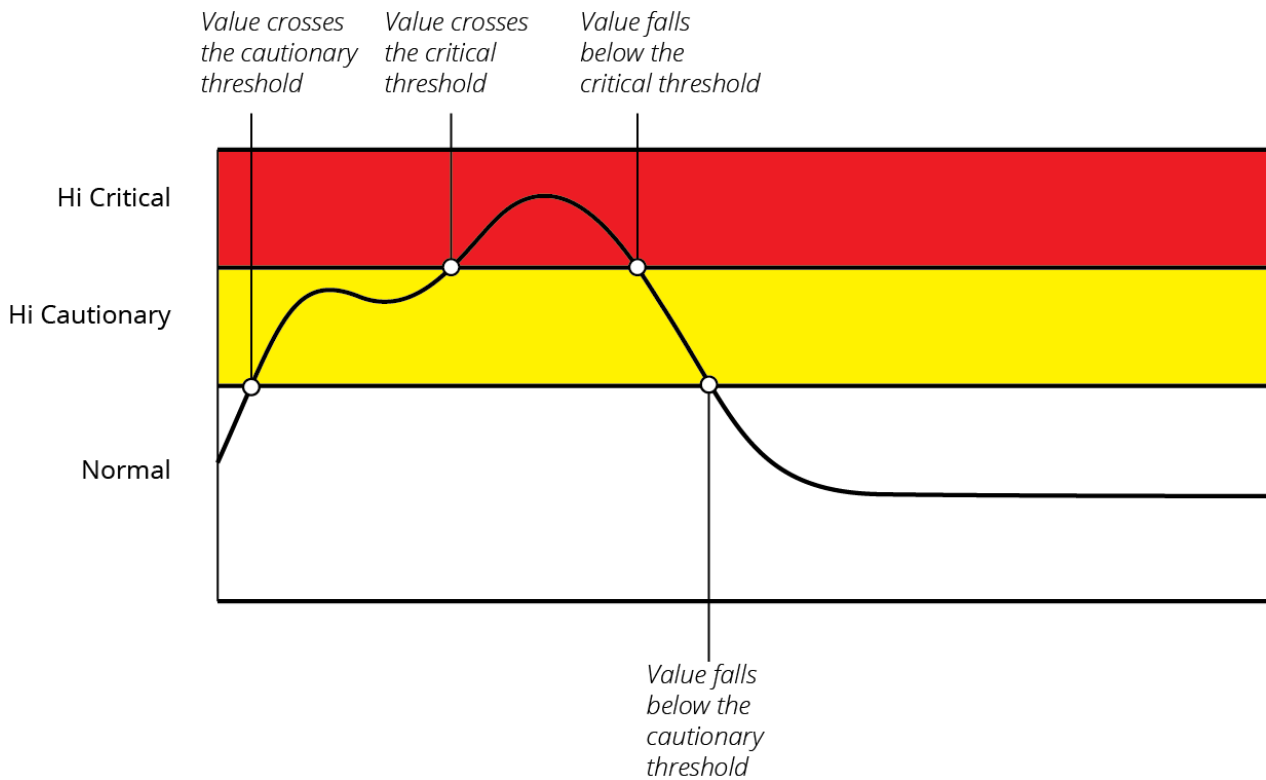


1	The channel value rises above the Hi Cautionary alarm threshold and Foreseer alerts you that an alarm/event has occurred. If you open the Alarms Management window, you'll see a Cautionary alarm (yellow). You'll also see the number for the Cautionary alarm count increment by one. Because the alarm is "latched," even if the value now falls below the Critical threshold it will remain in the Cautionary count.	<div style="border: 1px solid black; padding: 5px;"> Alarms 0 1 0 </div>
2	You acknowledge the alarm. The alarm moves from the Cautionary count (yellow) to acknowledged (blue).	<div style="border: 1px solid black; padding: 5px;"> Alarms 0 0 1 </div>
3	The channel value rises above the Hi Critical alarm threshold and moves to the Critical (red) count. This happens even though the channel wasn't rearmed because higher priority alarms are always declared.	<div style="border: 1px solid black; padding: 5px;"> Alarms 1 0 0 </div>
4	You acknowledge the alarm. The alarm moves from the Critical (red) count to acknowledged (blue).	

		
5	The channel value falls below the Critical threshold. The alarm remains in the acknowledged count.	
6	The channel value passes below the Cautionary alarm threshold. The alarm remains in the acknowledged (blue) count.	
7	Either you rearm the channel or the ack holdoff period expires. Because the value is also below the Cautionary alarm level the alarm is removed from the acknowledged (blue) count and no new alarm is declared.	

In the previous scenario, if the channel hadn't been rearmed, it remains in the Acknowledged state until the Ack Holdoff period (which defaults to 60 minutes) runs out. After that the channel is automatically rearmed.

Unlatching Example



1	The channel value rises above the Cautionary alarm threshold and Foreseer alerts you that an alarm has occurred. If you open the Alarms Management window, you'll see a Cautionary alarm (yellow). You'll also see the number for the Cautionary alarm count increment by one.	<div style="border: 1px solid black; padding: 5px; display: flex; justify-content: space-between; align-items: center;"> Alarms <div style="display: flex; gap: 10px;"> <div style="background-color: red; color: white; padding: 5px 10px; border-radius: 5px;">0</div> <div style="background-color: yellow; color: black; padding: 5px 10px; border-radius: 5px;">1</div> <div style="background-color: blue; color: white; padding: 5px 10px; border-radius: 5px;">0</div> </div> </div>
2	The value rises above the Critical alarm threshold and the alarm now shows as red and moves to the Critical alarm count.	<div style="border: 1px solid black; padding: 5px; display: flex; justify-content: space-between; align-items: center;"> Alarms <div style="display: flex; gap: 10px;"> <div style="background-color: red; color: white; padding: 5px 10px; border-radius: 5px;">1</div> <div style="background-color: yellow; color: black; padding: 5px 10px; border-radius: 5px;">0</div> <div style="background-color: blue; color: white; padding: 5px 10px; border-radius: 5px;">0</div> </div> </div>
3	The value passes below the Critical alarm threshold but remains within the Cautionary (yellow) alarm band. The alarm shows as yellow and moves to the Cautionary (yellow) alarm count.	<div style="border: 1px solid black; padding: 5px; display: flex; justify-content: space-between; align-items: center;"> Alarms <div style="display: flex; gap: 10px;"> <div style="background-color: red; color: white; padding: 5px 10px; border-radius: 5px;">0</div> <div style="background-color: yellow; color: black; padding: 5px 10px; border-radius: 5px;">1</div> <div style="background-color: blue; color: white; padding: 5px 10px; border-radius: 5px;">0</div> </div> </div>
4	The value passes below the Cautionary threshold. The alarm is closed and disappears from the	

	alarm count.	
--	--------------	--

Note that the alarm wasn't acknowledged in the unlatching example but it was still removed when the value dropped below the alarm threshold. There are lots of variations to the scenarios, but the important things to remember are:

- Higher alarms are always declared.
- For unlatching alarms, if the alarm condition disappears the alarm is removed.
- For latching alarms, the alarm conditional won't disappear unless you acknowledge the alarm and either rearm the channel or the ack holdoff period expires.

8. Configuring Alarm Settings

There are two ways to configure alarm settings:

- From with Foreseer itself, you can access the alarm settings for a channel by double-clicking any channel object linked to it.
- From the WebConfig page, which is discussed in the WebConfig Administrators Guide.

When you double-click a channel object, the channel properties dialog box appears. Alarm settings are on the Basic and Advanced tabs.

Basic Alarm Properties

Properties: \\Local\PowerXpert Meter1M_Current Phase C

Alarm Properties

Enable / Disable	Limit	Alarm Message
<input checked="" type="checkbox"/> Hi Critical	32.000000	Enter Message...
<input type="checkbox"/> Lo Critical	0.000000	Enter Message...
<input type="checkbox"/> Hi Caution	0.000000	Enter Message...
<input checked="" type="checkbox"/> Lo Caution	31.000000	Enter Message...
<input type="checkbox"/> Use Global Alarm Limits		+

Alarm Priority: 2000

Cancel OK

You can set the following on the Basic tab:

- Alarm Limits (trigger values)
- Alarm levels (Cautionary and Critical)
- Alarm Message

✔ The Basic tab is different for each channel type.

Analog Alarm Properties

Foreseer provides both high and low alarms for each analog channel. There are two configurable

alarm trigger levels (Limit) for both Hi and Low alarms. Cautionary alarms are color coded yellow and Critical alarms are red in the Foreseer interface. Message defines the text that's shown when that alarm state is declared. Priority is an integer defining an arbitrary level of importance for all alarm states from this channel. Priority can range from 1 (highest) to 9999 (lowest). Keep in mind that you can filter the alarms shown in the Alarm Management Window using Priority. If you wish to use exactly the same settings as another channel, you can select global alarm limits.

Digital Alarm Properties

When alarms are Enabled, you can specify if the channel should alarm either on "false" or "true." You can also select if the alarm is Critical or Cautionary and the alarm message. The text you enter for Message describes the alarm, and is shown when the alarm is declared. Priority is an integer defining an arbitrary level of importance for all alarm states from this channel. Priority can range from 1 (highest) to 9999 (lowest).

Advanced Alarm Settings

Advanced settings affect the behavior of alarms. The following describes each control:

Ack Holdoff (Latched Only)

Ack Holdoff defines the delay interval (in minutes) after the time a latched alarm is acknowledged until it's automatically rearmed. During this period, channel values continue to be displayed and archived; however, the channel's value isn't compared to its defined alarm Limits.

Re-Arm

Re-Arm is the period of time (in minutes) before alarm monitoring is automatically restored from a disarmed channel. Once rearmed, Foreseer resumes testing a channel's current value against its specified alarm Limits.

Delay Alarm

Delay Alarm is the period of time (in seconds) before an alarm is reported. The default for channels is to report alarms immediately. However, for device communications channels it's set to 30 seconds *and* the alarm behavior is unlatched. This combination provides a sort of "deadband" for digital channels. In this case, if communications comes back before the 30 seconds is up, no alarm is declared. This prevents nuisance alarm trips for occasional communications problems.

Similarly, you can use it to prevent nuisance alarm trips for analog channels such as non-critical voltage channels. For example, in the case of a voltage channel that could be powered by an emergency generator, that generator needs sufficient time to start up, synchronize, and transfer the load. As long as that normal activity happens, voltage will return to acceptable values within just a few seconds and an alarm isn't needed. Setting the delay on such channels to a long enough value, such as 45 seconds, will prevent nuisance alarms when things are operating as they should. If, however, that sequence doesn't happen then a valid alarm will be reported as soon as the delay period expires.

Latch Alarm

Latched and unlatched sets the behavior of alarms for the channel. For unlatched, when the alarm

condition goes away, the alarm notification automatically disappears. When latched, the channel's highest alarm state is reported regardless of its current value. For a detailed discussion of these behaviors, see [Understanding Foreseer Alarms](#).

Hysteresis (Analog Channels Only)

Hysteresis determines the threshold value beyond the alarm limit before a new alarm is reported for an analog channel. Hysteresis is used to eliminate nuisance alarms when the channel's input fluctuates near an alarm limit setting. Once an alarm occurs, the input level must drop below, or rise above, the threshold value then exceed the alarm limit again before a new alarm is reported.

✔ This attribute is only works for unlatched alarms.

9. Channel Properties

Channels Properties Dialog Box - Operators can double-click a Channel to access detailed information about its properties. iPad users can access Channel Properties by selecting the associated Checkbox and then choosing Channel Properties from the Objects menu. The tabbed Properties dialog box defines its operational parameters. These characteristics vary somewhat depending on whether the channel is analog or digital, but they are grouped similarly:

- General Channel Properties identify the individual input, its display, and archiving characteristics.
- Basic Channel Properties define the situations under which the channel reports an alarm, as well as the text Messages corresponding to the particular condition. A setting also assigns a relative level of importance to the channel for Priority sorting in the Alarms Manager.
- Advanced Channel Properties specify various automatic responses to a detected alarm.

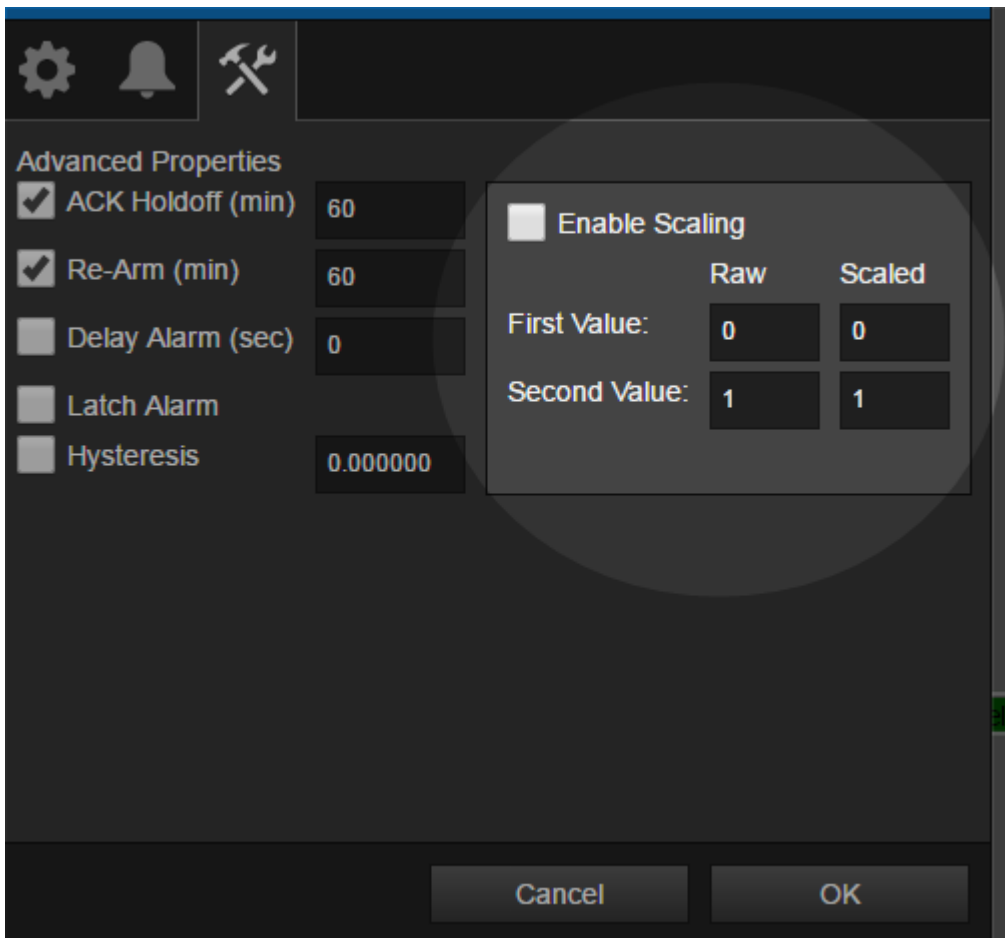
✔ Channel Properties can be modified by an operator with sufficient privileges

Scaling Analog Channel Values

You can set a scaling factor in the channel properties to scale channel values. This works well with simple, linear conversions such as changing W to kW.

To access this feature:

1. Double-click a channel object to launch the Channel Properties.
2. Click the Advanced Properties tab.



The scaling factors are in the Second Value fields. The Raw value is a divisor and the Scaled value is a multiplier. For example, a Raw value of 1000 converts W to kW. Conversely, a Scaled value of 1000 converts kW to W.

Two things to keep in mind:

- You must check Enable Scaling before this takes effect.
- You can only enter integer values. Floating point values will be reset.

The following are additional scaling examples:

Reducing a Value by a factor of 10

Minimum Raw Value: 0
 Maximum Raw Value: 10
 Minimum Scaled Value: 0
 Maximum Scaled Value: 1

Converting Temperature Values from Fahrenheit to Celsius:

Minimum Raw Value: 32
 Maximum Raw Value: 212
 Minimum Scaled Value: 0
 Maximum Scaled Value: 100

Converting Temperature Values from Celsius to Fahrenheit:

Minimum Raw Value: 0
Maximum Raw Value: 100
Minimum Scaled Value: 32
Maximum Scaled Value: 212

Converting Pressure Values from KPA to PSI

Minimum Raw Value: 0
Maximum Raw Value: 1000
Minimum Scaled Value: 0
Maximum Scaled Value: 145

Dividing a value by half

Minimum Raw Value: 0
Maximum Raw Value: 10
Minimum Scaled Value: 0
Maximum Scaled Value: 5

Kelvin to Fahrenheit

Minimum Raw Value: 0
Maximum Raw Value: 100
Minimum Scaled Value: -460
Maximum Scaled Value: -280

Analog Channel Properties

- State is a fixed entry reporting the current alarm status of the input as Normal, Cautionary, Critical, or Acknowledged.
- Value is a fixed entry showing the channel's value when the channel properties was accessed.
- Description is descriptive text (up to 255 characters) identifying the channel.
- Units are the measurement units.
- Archive specifies the Channel value that is archived to the database. It may be the Average reading or the Minimum, Maximum, First, Last, Null, or None over the archive interval. The default (and recommended) selection is Average.

Properties: \\Local\PowerXpert Meter1\M_Voltage Avg L-L

General Properties

State: Normal

Value: 394.03

Description: Register 4629 - VLLavg

Units: Volts

Archive: Average

Cancel OK

Analog Properties: General Tab

Analog Channel Alarm Properties

For more information about alarm settings, see [Understanding Foreseer Alarms](#)

Operators can activate and configure the channel's Cautionary (yellow) and Critical (red) alarm Limits. The Limit value specifies the channel's monitored Cautionary (yellow) and Critical (red) Alarm Limits. Independent Hi and Lo Limits can be set for both event levels.

Message is the text that displays with the channel's Cautionary (yellow) and Critical (red) Alarm Limits. Messages can be independently assigned to the Hi and Lo Limits for each channel level event. Priority is a number from 1 (highest) to 9999 (lowest) which assigns a level of importance to an alarm detected on this channel. Operators can filter on Priority in the Alarm Management window.

You can also enable Global Alarm Limits and then choose a channel to reference for alarm settings.

Properties: \\Local\PowerXpert Meter1\M_Voltage Avg L-L

Alarm Properties

Enable / Disable	Limit	Message
<input checked="" type="checkbox"/> Hi Critical	410	Critical High Voltage
<input checked="" type="checkbox"/> Lo Critical	370	Critical Low Voltage
<input checked="" type="checkbox"/> Hi Caution	395	Cautionary High Voltage
<input checked="" type="checkbox"/> Lo Caution	380	Cautionary Low Voltage

Use Global Alarm Limits

Alarm Priority: 5000

Cancel OK

Analog Properties: Alarm Tab

Analog Channel Advanced Properties

For more information about Advanced Properties, see [Understanding Foreseer Alarms](#). Advanced settings affect the behavior of alarms. The following describes each control:

Ack Holdoff (Latched Only)

Ack Holdoff defines the delay interval (in minutes) after the time a latched alarm is acknowledged until it's automatically rearmed. During this period, channel values continue to be displayed and archived; however, the channel's value isn't compared to its defined alarm Limits.

Re-Arm

Re-Arm is the period of time (in minutes) before alarm monitoring is automatically restored from a disarmed channel. Once rearmed, Foreseer resumes testing a channels current value against its specified alarm Limits.

Delay Alarm

Delay Alarm is the period of time (in seconds) before an alarm is reported. The default for channels is to report alarms immediately. However, for device communications channels it's set to 30 seconds and the alarm behavior is unlatched. This combination provides a sort of "deadband" for digital channels. In this case, if communications comes back before the 30 seconds is up, no alarm is declared. This prevents nuisance alarm trips for occasional communications problems. Similarly, you can use it to prevent nuisance alarm trips for analog channels such as non-critical voltage channels. For example, in the case of a voltage channel that could be powered by an emergency generator, that generator needs sufficient time to start up, synchronize, and transfer the load. As long as that normal activity happens, voltage will return to acceptable values within just a few seconds and an alarm isn't needed. Setting the delay on such channels to a long enough value, such as 45 seconds, will prevent nuisance alarms when things are operating as they should. If, however, that sequence doesn't happen then a valid alarm will be reported as soon as the delay period expires.

Latch Alarm

Latched and unlatched sets the behavior of alarms for the channel. For unlatched, when the alarm condition goes away, the alarm notification automatically disappears. When latched, the channels highest alarm state is reported regardless of its current value. For a detailed discussion of these behaviors, see [Understanding Foreseer Alarms](#).

Hysteresis (Analog Channels Only)

Hysteresis determines the threshold value beyond the alarm limit before a new alarm is reported for an analog channel. Hysteresis is used to eliminate nuisance alarms when the channels input fluctuates near an alarm limit setting. Once an alarm occurs, the input level must drop below, or rise above, the threshold value then exceed the alarm limit again before a new alarm is reported.

You can set a scaling factor in the channel properties to scale channel values. This works well with simple, linear conversions such as changing W to kW.

To access this feature:

1. Double-click a channel object to launch the Channel Properties.
2. Click the Advanced Properties tab.

Advanced Properties

ACK Holdoff (min) 60

Re-Arm (min) 60

Delay Alarm (sec) 0

Latch Alarm

Hysteresis 0.000000

Enable Scaling

	Raw	Scaled
First Value:	0	0
Second Value:	1	1




Cancel OK

The scaling factors are in the Second Value fields. The Raw value is a divisor and the Scaled value is a multiplier. For example, a Raw value of 1000 converts W to kW. Conversely, a Scaled value of 1000 converts kW to W.

Two things to keep in mind:

- You must check Enable Scaling before this takes effect.
- You can only enter integer values. Floating point values will be reset.

Properties: \\Local\PowerXpert Meter1\M_Voltage Avg L-L ✕

Advanced Properties

<input checked="" type="checkbox"/> ACK Holdoff (min)	<input type="text" value="60"/>	<input type="checkbox"/> Enable Scaling <table border="0" style="margin-left: 20px;"> <tr> <td></td> <td style="text-align: center;">Raw</td> <td style="text-align: center;">Scaled</td> </tr> <tr> <td>First Value:</td> <td><input type="text" value="0"/></td> <td><input type="text" value="0"/></td> </tr> <tr> <td>Second Value:</td> <td><input type="text" value="1"/></td> <td><input type="text" value="1"/></td> </tr> </table>		Raw	Scaled	First Value:	<input type="text" value="0"/>	<input type="text" value="0"/>	Second Value:	<input type="text" value="1"/>	<input type="text" value="1"/>
	Raw		Scaled								
First Value:	<input type="text" value="0"/>		<input type="text" value="0"/>								
Second Value:	<input type="text" value="1"/>		<input type="text" value="1"/>								
<input checked="" type="checkbox"/> Re-Arm (min)	<input type="text" value="60"/>										
<input type="checkbox"/> Delay Alarm (sec)	<input type="text" value="0"/>										
<input checked="" type="checkbox"/> Latch Alarm											
<input type="checkbox"/> Hysteresis	<input type="text" value="0.000000"/>										

WebViews Guide - Foreseer 7.0
Publication date 2/2018

Copyright © 2018 by Eaton Corporation. All rights reserved. Specifications contained herein are subject to change without notice.

Power Xpert and Foreseer are registered trademarks of Eaton Corporation.

EATON CORPORATION - CONFIDENTIAL AND PROPRIETARY NOTICE TO PERSONS RECEIVING THIS DOCUMENT AND/OR TECHNICAL INFORMATION THIS DOCUMENT, INCLUDING THE DRAWING AND INFORMATION CONTAINED THEREON, IS CONFIDENTIAL AND IS THE EXCLUSIVE PROPERTY OF EATON CORPORATION, AND IS MERELY ON LOAN AND SUBJECT TO RECALL BY EATON AT ANY TIME. BY TAKING POSSESSION OF THIS DOCUMENT, THE RECIPIENT ACKNOWLEDGES AND AGREES THAT THIS DOCUMENT CANNOT BE USED IN ANY MANNER ADVERSE TO THE INTERESTS OF EATON, AND THAT NO PORTION OF THIS DOCUMENT MAY BE COPIED OR OTHERWISE REPRODUCED WITHOUT THE PRIOR WRITTEN CONSENT OF EATON. IN THE CASE OF CONFLICTING CONTRACTUAL PROVISIONS, THIS NOTICE SHALL GOVERN THE STATUS OF THIS DOCUMENT.
DISCLAIMER OF WARRANTIES AND LIMITATION OF LIABILITY

The information, recommendations, descriptions and safety notations in this document are based on Eaton Corporation's ("Eaton") experience and judgment and may not cover all contingencies. If further information is required, an Eaton sales office should be consulted. Sale of the product shown in this literature is subject to the terms and conditions outlined in appropriate Eaton selling policies or other contractual agreement between Eaton and the purchaser. THERE ARE NO UNDERSTANDINGS, AGREEMENTS, WARRANTIES, EXPRESSED OR IMPLIED, INCLUDING WARRANTIES OF FITNESS FOR A PARTICULAR PURPOSE OR MERCHANTABILITY, OTHER THAN THOSE SPECIFICALLY SET OUT IN ANY EXISTING CONTRACT BETWEEN THE PARTIES. ANY SUCH CONTRACT STATES THE ENTIRE OBLIGATION OF EATON. THE CONTENTS OF THIS DOCUMENT SHALL NOT BECOME PART OF OR MODIFY ANY CONTRACT BETWEEN THE PARTIES.

In no event will Eaton be responsible to the purchaser or user in contract, in tort (including negligence), strict liability or otherwise for any special, indirect, incidental or consequential damage or loss whatsoever, including but not limited to damage or loss of use of equipment, plant or power system, cost of capital, loss of power, additional expenses in the use of existing power facilities, or claims against the purchaser or user by its customers resulting from the use of the information, recommendations and descriptions contained herein.