

For videos and other information on how to use your Wi-Fi smart voice dimmer visit:

Eaton.com/SmartHome



"Alexa, play music."

"Here's a station you might like."



www.eaton.com
www.Eaton.com/SmartHome

EIS-0267-E (REV. B)

Place supplier QR Code here

Your installation is finished!

Enjoy your new Wi-Fi smart voice dimmer.

For troubleshooting contact us at: TechSupport@eaton.com or 1-866-853-4293, option 2

FCC STATEMENT

This device complies with Part 15 of the FCC Rules. Operation is subject to the following two conditions:

1: This device may not cause harmful interference, and

2: This device must accept any interference received, including interference that may cause undesired operation.

NOTE: This equipment has been tested and found to comply with the limits for a Class B digital device, pursuant to Part 15 of the FCC Rules. These limits are designed to provide reasonable protection against harmful interference in a residential installation. This equipment generates, uses and can radiate radio frequency energy and, if not installed and used in accordance with the instructions, may cause harmful interference to radio communications. However, there is no guarantee that interference will not occur in a particular installation. If this equipment does cause harmful interference to radio or television reception, which can be determined by turning the equipment off and on, the user is encouraged to try to correct the interference by one or more of the following measures:

- Reorient or relocate the receiving antenna.
- Increase the separation between the equipment and receiver.
- Connect the equipment into an outlet on a circuit different from that to which the receiver is connected.
- Consult the dealer or an experienced radio/TV technician for help.

BEFORE INSTALLATION FCC CAUTION: Any changes or modifications not expressly approved by Eaton Wiring Devices could void the user's authority to operate the equipment.

This device complies with Industry Canada's license-exempt RSSs. Operation is subject to the following two conditions:

- (1) This device may not cause interference; and
- (2) This device must accept any interference, including interference that may cause undesired operation of the device.

Le présent appareil est conforme aux CNR d'Industrie Canada applicables aux appareils radio exempts de licence. L'exploitation est autorisée aux deux conditions suivantes :

1. L'appareil ne doit pas produire de brouillage;
2. L'utilisateur de l'appareil doit accepter tout brouillage radioélectrique subi, même si le brouillage est susceptible d'en compromettre le fonctionnement.

EATON WIRING DEVICES LIMITED 2 YEAR WARRANTY

Eaton Wiring Devices warrants its Wi-Fi smart device to be free of defects in materials and workmanship in normal use and service for a period of two years from date of original purchase. THIS TWO (2) YEAR LIMITED WARRANTY IS IN LIEU OF ALL OTHER WARRANTIES, OBLIGATIONS, Eaton Wiring Devices warrants this smart device to be free of defects in materials and workmanship in normal use and service for a period of two years from date of original purchase. THIS TWO (2) YEAR LIMITED WARRANTY IS IN LIEU OF ALL OTHER WARRANTIES, OBLIGATIONS, OR LIABILITIES, EXPRESSED OR IMPLIED (INCLUDING ANY IMPLIED WARRANTY OF MERCHANTABILITY OR FITNESS FOR A PARTICULAR PURPOSE THAT IS IN DURATION IN EXCESS OF TWO YEARS FROM THE DATE OF ORIGINAL CONSUMER PURCHASE), NO AGENT, REPRESENTATIVE, OR EMPLOYEE OF EATON HAS AUTHORITY TO INCREASE OR ALTER THE OBLIGATIONS OF EATON UNDER THIS WARRANTY. To obtain warranty service for any properly installed Eaton smart device that proves defective in normal use send the defective smart device prepaid and insured to Quality Control Dept., Eaton Wiring Devices, 203 Cooper Circle, Peachtree City, GA 30269; in Canada: Eaton Wiring Devices, 5925 McLaughlin Road, Mississauga, Ontario L5R 1B8. Eaton will repair or replace the defective unit, at its option. Eaton will not be responsible under this warranty if examination shows that the defective condition of the unit was caused by misuse, abuse, improper installation, alteration, improper maintenance or repair of damage in shipment to Eaton. EATON SHALL HAVE NO RESPONSIBILITY FOR INSTALLATION OF THE SMART DEVICE, OR FOR ANY PERSONAL INJURY, PROPERTY DAMAGE, OR ANY SPECIAL, INCIDENTAL, CONTINGENT, OR CONSEQUENTIAL DAMAGES OF ANY KIND, RESULTING FROM DEFECTS IN THE DIMMER OR FOR BREACH OF ANY EXPRESS OR IMPLIED WARRANTY ON THIS PRODUCT. THE EXCLUSIVE REMEDY FOR BREACH OF THE LIMITED WARRANTY CONTAINED HEREIN IS THE REPAIR OR REPLACEMENT OF THE DEFECTIVE PRODUCT AT EATON'S OPTION. IMPLIED WARRANTIES (IF ANY) INCLUDING, BUT NOT LIMITED TO IMPLIED WARRANTIES OF FITNESS FOR A PARTICULAR PURPOSE AND MERCHANTABILITY, ARE LIMITED IN DURATION TO A PERIOD ENDING TWO YEARS FROM THE DATE OF ORIGINAL CONSUMER PURCHASE. IN NO CASE SHALL EATON'S LIABILITY UNDER ANY OTHER REMEDY PRESCRIBED BY LAW EXCEED THE PURCHASE PRICE. Some states do not allow the exclusion or limitation of incidental or consequential damages or allow disclaimers or modifications of or limitations on how long an implied warranty lasts, so the above limitations may not apply to you. Some Canadian provinces do not allow exclusion or variance of implied warranties so that some or all of the above limitations may not apply to you. This warranty gives you specific legal rights and you may also have other rights which vary from state to state and province to province. Read enclosed instructions carefully. If you have any questions concerning use or care of this product, please write: Consumer Service Division, Eaton Wiring Devices, 203 Cooper Circle, Peachtree City, GA 30269.

Issues setting up or using your device?

Q: Device not working, load does not come on, LED indicator bar not functioning

A: - Check to make sure your breaker is turned on
- Make sure the air gap switch is pushed in
- Make sure wiring is correct by following the provided wiring instructions closely

Q: Lights are flickering

A: - Make sure wiring is correct by following the provided wiring instructions closely
- Make sure wiring is not loose
- Adjust the minimum brightness level to a higher level*

Q: Alexa is not working

A: - Make sure your device is registered in the Amazon Alexa app using the instructions provided
- Check that your internet connection is working
- Pull the air gap switch and push it back in to reboot the device

Q: Device unable to connect to Wi-Fi

A: - Check that the router is powered on
- Check that you have the correct network name and password
- Make sure your Wi-Fi router is in a location that is suitable for good signal quality

Still having issues? Visit Eaton.com/SmartHome or contact us at **1-866-853-4293, option 2** for more help.

* Visit www.eaton.com/smarthome to adjust the minimum brightness level

"Alexa, what's the news."

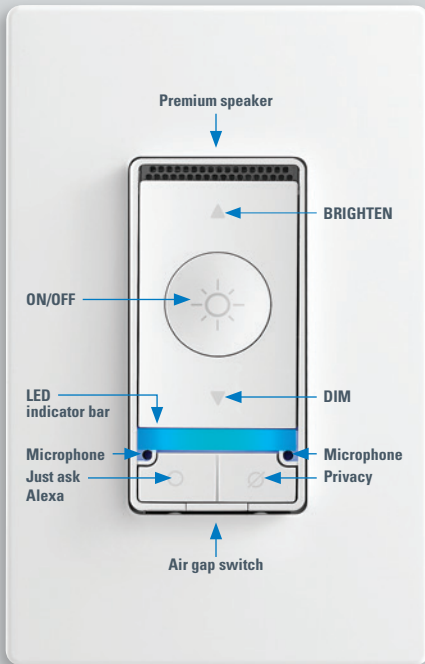
"Here's what's new."

How to install your Wi-Fi smart voice dimmer



Amazon, Alexa and all related logos are trademarks of Amazon.com, Inc. or its affiliates.

Eaton Wi-Fi smart voice dimmer



WARNINGS AND CAUTIONS

- Turn OFF circuit breaker or remove fuse(s) and test that the power is OFF before starting the installation process
- Never wire any electrical device with power turned ON
- If you are not sure about any part of these instructions, please contact a licensed electrician
- If bare copper or green ground connection is not available in the wallbox, contact a licensed electrician for installation
- Use only #14 or #12 copper wire rated for at least 75 degrees C with these devices. **DO NOT USE ALUMINUM WIRE**

CAUTION

- Use only with 120V/AC 60Hz
- Do not exceed the maximum rating of the dimmer as indicated on the device
- Must be installed and used in accordance with all national and local electrical codes
- Suitable for installation in outlet box measuring a minimum 3" x 2" x 2-1/2" deep and wired in accordance with NEC article 314 box fill requirements

IMPORTANT

- The dimmer will not work or will be damaged if wired incorrectly and the warranty will be voided. Refer to the wiring instructions provided
- Wiring dimmer HOT may cause permanent damage to dimmer and void warranty

OPERATION INSTRUCTIONS

- Press the ON/OFF button to turn the lights ON
- Press the button again to turn the lights OFF
- Pull the air gap switch to disconnect power to the load

QUICK MAX

- When the lights are OFF, press and hold the ON/OFF button for 2 seconds. The device will then instantly turn ON at its maximum brightness level

DELAYED OFF

When the lights are ON, press and hold the ON/OFF button for two seconds. The device will then wait 10 seconds before turning the lights OFF. During this time, the LED indicator bar will blink white until the lights turn OFF. At this point, you can press the ON/OFF button again to override the timer and turn OFF the lights immediately.

FACTORY RESET

- The dimmer can be reset which will exclude it from its network and restore all factory defaults.
- Press and hold the Privacy button for 30 seconds. Upon successful completion, the LED indicator bar will slowly fade in and out and orange color to indicate that the device is now unregistered and ready to be setup again.

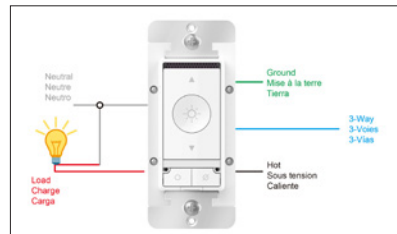
DIMMER RATING

	Load Type	Single Gang	2-Gang	3-Gang
WFAVD30	CFL/LED/FLR/MLV/INC/ HAL/ELV	300W	300W	200W

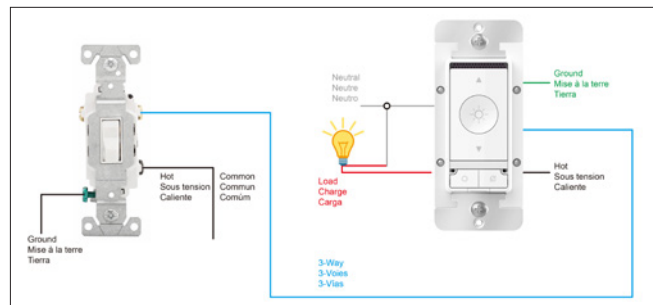


For more advanced configuration parameters such as adjusting the LED indicator bar brightness and other features, please visit: Eaton.com/SmartHome

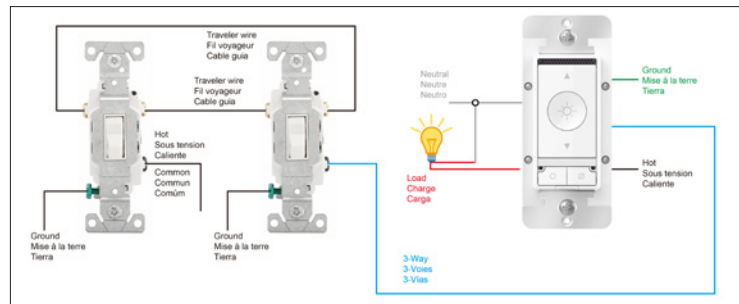
WIRING DIAGRAMS



Single location control installation



Two location control installation using a standard 3-way switch



Multi-location control installation using a standard 3-way switch



For videos and other information on how to use your Wi-Fi smart voice dimmer visit: Eaton.com/SmartHome

Get your Wi-Fi smart voice dimmer running in 3 easy steps!



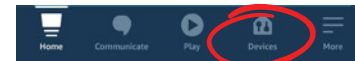
Step 1 Install your Wi-Fi smart voice dimmer per the instructions provided in this booklet

Step 2 Download the Amazon Alexa app via the App Store



Step 3 Add your device to the Amazon Alexa app in a few easy steps:

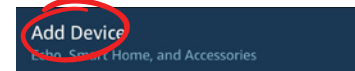
a) Select "Devices" option



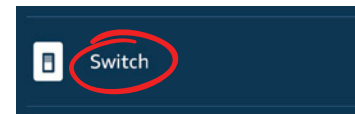
b) Select "+" option to add device



c) Select "Add Device" option



d) Select device type: - Switch



e) Select Eaton as the brand

f) Select sub-type Voice Dimmer Switch

g) Follow the steps in the Amazon Alexa app to finish setting up your Wi-Fi smart voice dimmer