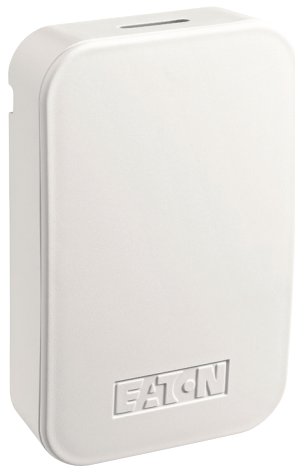


# Home automation hub

Project Name:	Prepared By:
Project Number:	Date:
Catalog Number:	Type:



HOMECT

## Description

The home automation hub is a powerful gateway for your connected home. From a single app, the hub can manage lighting controls, home security systems, door locks, garage door openers, thermostats, and more!

## Design features

- Simple and quick installation
- App based local and remote control of hub and all devices connected to it
- AP/Ad-hoc WiFi mode for installation without an active internet connection
- Can be mounted on the wall or placed on a flat surface
- Powered by micro USB or Power over Ethernet (PoE). PoE injector sold separately
- Built-in WiFi and Z-Wave radios for connecting wide variety of smart home devices
- Automatic over the air software updates to ensure the hub is always up to date
- Support for configurable scenes, schedules and notifications (text and email)
- Auto discovery and simple setup of popular smart home products including lighting controls, thermostats, garage door openers, door locks, sensors and more
- Works with Amazon Alexa for voice based control

**Table 1. Home automation hub**

Catalog No.	Description
□ HOMECT	Home automation hub*

\*Powered by micro USB or Power over Ethernet (PoE). PoE injector sold separately.

**Compliances, specifications and availability are subject to change without notice.**



Powering Business Worldwide

Project Name:	Prepared By:
Project Number:	Date:
Catalog Number:	Type:

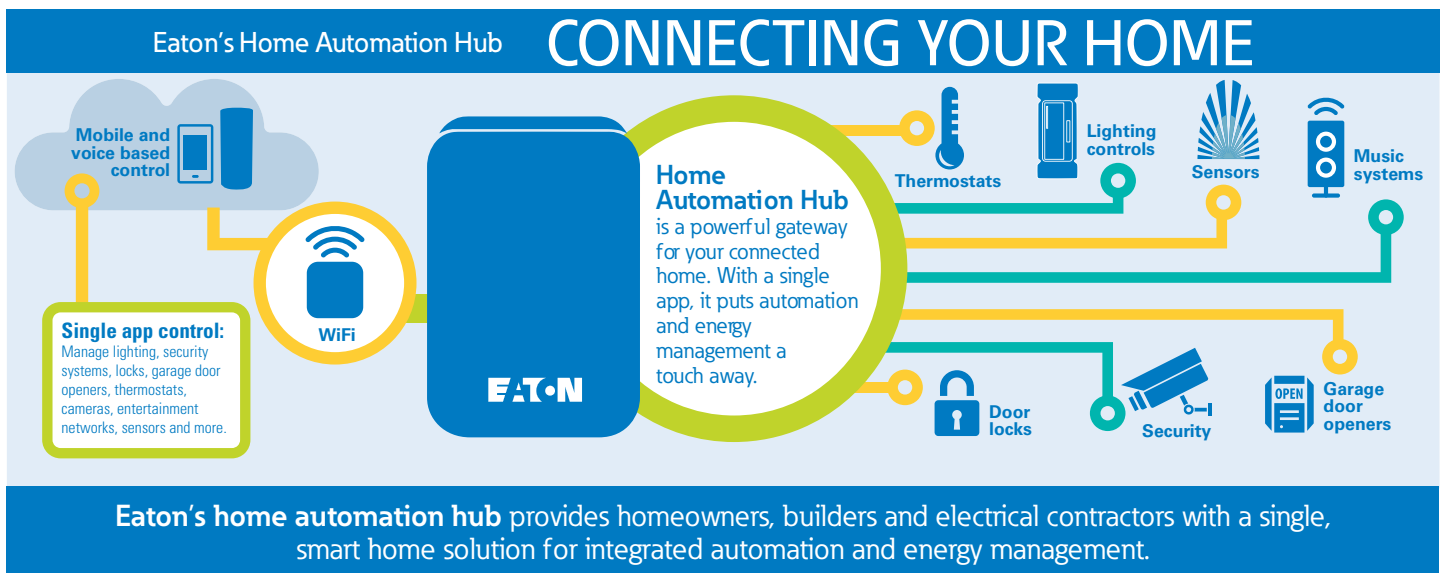
## Applications

Eaton's home automation hub is designed to act as a single solution for home owners, home builders and electrical contractors looking for a smart home system that incorporates home automation & energy management.

The home automation hub is designed to provide best in class user experience with Eaton's line of compatible home automation products. The hub also allows homeowners and installers to integrate variety of other popular smart home devices such as Nest thermostats, Amazon Echo, Kwikset locks, as well as security systems. By integrating the control of these various devices into a single app, we help simplify home automation experience for the homeowners.

The hub is a powerful device that continues to let homeowners access their smart home even when the internet connection to the cloud is down. With ad-hoc WiFi capability, contractors can install the controller and Z-Wave based products in new home construction when there is no internet connectivity.

With automatic firmware updates, Eaton ensures the hub is always current. This allows the device to have the latest features and fix any issues without service interruptions and expensive call backs.



Eaton's home automation hub provides homeowners, builders and electrical contractors with a single, smart home solution for integrated automation and energy management.

Table 2. Specifications

Device Type	Home Automation Hub
<b>Input Connections</b>	<b>Network:</b> 1 Ethernet Port, 8 wire RJ45 with LED indicators for diagnostic 10/100/1000 BaseT Ethernet port <b>Power:</b> 802.11af POE or 5Vdc over micro USB <b>USB:</b> 2 USB 2.0 ports (for future connectivity) <b>Connectivity:</b> 802.11n Wi-Fi and 908.4 MHz (Z-Wave)
<b>Computing</b>	<b>Processor:</b> Quad Core 900MHz <b>Memory:</b> 1GB DDR2, 8GB flash <b>Operating System:</b> Linux
<b>Operating Environment</b>	<b>Temperature:</b> 41° to 113°F (5° to 45°C) <b>Relative humidity:</b> 10 to 90% (non-condensing)
<b>Physical Dimensions</b>	(W X H X D) 3.85 X 5.98 X 1.32 in
<b>Mounting</b>	(W X H X D) 3.85 X 5.98 X 1.32 in

Project Name:	Prepared By:
Project Number:	Date:
Catalog Number:	Type:

**Table 3. Compatible products**

Compatible access, lighting, sensors, and water devices can be added using the Eaton Home App. See the following for compatible devices.

Manufacturer	Device Type	Model
<b>Lighting Controls</b>		
<b>Eaton</b>	Z-Wave dimmers & accessory dimmers	RF9540-N, RF9542-Z, RF9534, RF9536-N, RF9537-N
	Z-Wave switches & accessory switches	RF9501, RF9517, RF9518
	Z-Wave scene controller	RFVWC5
	Z-Wave tamper resistant receptacle	RFTR9505-T
	Z-Waveplug-in modules	RFAPM, RFLDM
<b>Sensors</b>		
<b>Aeotec</b>	Multi Sensor	DSB05
	Door/Window Sensor	DSB29
	Range Extender	DSD37
	Recessed Door/Window Sensor	DSB54
	Water Sensor	DSB45
<b>Fibaro</b>	Door/Window Sensor	FGK-101, 102, 103, 104, 105, 106, 107
	Flood Detection Sensor	FGFS-101
	Motion Detection Sensor	FGMS-001
<b>Access Control</b>		
<b>Kwikset</b>	Deadbolt	910, 912, 914, 916
<b>Schlage</b>	Deadbolt	BE369, BE468, BE469
	Lever	FE599
<b>Yale</b>	Deadbolt	YRD-110, YRD-120, YRD-220, YRD-240
<b>Linear</b>	Garage Door Controller	GD00Z
<b>Climate Control</b>		
<b>Clare Controls</b>	Thermostat	CH-THSTAT-Z, CH-THSTAT-W, CH-TSB10-WF
	Thermostat/Humidistat	CH-THSTAT-W
<b>Water</b>		
<b>Clare Controls</b>	Water Valve	CH-WV01
	Water Sensor and Freeze alarm	CH-WWA-02-W
<b>Fibaro</b>	Flood Sensor	FGFS-101
<b>WaterCop</b>	Shut-Off Valve	WCVLF
<b>Security</b>		
<b>Resolution Products</b>	Helix	RE6100P

We are always adding more devices to be compatible with our system. Please visit our website [www.eaton.com/connectedhome](http://www.eaton.com/connectedhome) for the latest list of compatible devices.

Project Name:	Prepared By:
Project Number:	Date:
Catalog Number:	Type:

**Table 4. Auto-discoverable devices**

Auto-discoverable devices include some popular smart home devices including CCTVs, video doorbells & music devices. These devices will automatically show up in your Eaton Home App as soon as they are installed on your device and are on the same WiFi network as the Eaton home automation hub.

Manufacturer	Device Type	Model
<b>Climate Control</b>		
<b>Google</b>	Nest Learning Thermostat	Generation 1, 2 & 3
<b>Honeywell</b>	Thermostat	Lyric T6 Pro Wi-Fi, Lyric T5 Wi-Fi, Lyric Round
<b>CCTV/Video</b>		
<b>Clare Controls</b>	1 MP Indoor Wi-Fi Cube Camera with IR	CVP-B1C50-IDIW
	2 MP Indoor Pan and Tilt Camera with IR	CVP-B2PT50
	2 MP Indoor Wi-Fi Cube Camera with IR	CVP-B2C50-IDIW
	2 MP Low Profile Mini-Dome Camera with Wi-Fi	CVP-B2D50-ODIW
	2 MP Mini-Dome Camera	CVP-B2D50-ODI
	2 MP Turret Camera with Enhanced IR	CVP-B2T50-ODI
	2 MP Mini-Bullet Camera with IR	CVP-B2B50-ODI
	2 MP PTZ Pan/Tilt/Zoom Camera with IR	CVP-M2PTZ50-ODI
	4 MP Varifocal Bullet Camera with IR	CVP-M4B50-ODI
	4 MP Motorized Varifocal Dome Camera with IR	CVP-M4D50-ODIM
4 MP Varifocal Dome Camera with IR	CVP-M4D50-ODI	
<b>Video Doorbell</b>		
<b>Clare Controls</b>	Video Doorbell	CVP-B2DB50-ODIW
<b>Music</b>		
<b>Denon</b>	Heos	All models
<b>Sonos</b>	Sonos	All models

We are always adding more devices to be compatible with our system. Please visit our website [www.eaton.com/connectedhome](http://www.eaton.com/connectedhome) for the latest list of compatible devices.

**Table 5. Color Ordering Information**



(Decorator White)

**Compliances, specifications and availability are subject to change without notice.**

Electrical Sector  
203 Cooper Circle  
Peachtree City, GA 30269  
United States  
Eaton.com  
Eaton.com/wiringdevices

Electrical Sector  
Canada Operations  
5925 McLaughlin Road  
Mississauga, Ontario, L5R 1B8  
Canada  
EatonCanada.ca  
Eaton.com/wiringdevices

Electrical Sector  
Mexico Operations  
Carr. Tlalnepantla -  
Cuautitlán Km 178 s/n  
Col. Villa Jardín esq.  
Cerrada 8 de Mayo  
Cuautitlán, México CP 54800  
México  
Eaton.mx  
Eaton.com/wiringdevices



**Eaton**  
1000 Eaton Boulevard  
Cleveland, OH 44122  
United States  
Eaton.com

© 2017 Eaton  
All Rights Reserved  
Printed in USA  
Publication No. TD610076EN  
August 2017

Eaton is a registered trademark.  
All other trademarks are property of their respective owners.