

EPC Series 200 Amp Circuit Breaker Bail Assembly Replacement

Installation & Maintenance Information

SAVE THESE INSTRUCTIONS FOR FUTURE REFERENCE

⚠ WARNING

To avoid the risk of fire, explosion, or electric shock, this product should be installed, inspected, and maintained by a qualified electrician only, in accordance with all applicable electrical codes.

⚠ WARNING

To avoid explosion:

All gasket seals must be clean and undamaged.

Before opening, ensure hazardous gases are not present. Electrical power to the unit must be turned off. Keep tightly closed when in operation.

⚠ WARNING

To avoid electric shock:

Be certain electrical power is "OFF" before and during installation and maintenance.

1. Removal of bail-linkage-cam assembly.

- a. Ensure external breaker handle is in "OFF" position and that all power is removed from the breaker.



- b. Remove large dome cover from top of EPC enclosure.



- c. Remove cam from operating shaft by wrenching off bolt securing cam to shaft (keep bolt and lock washer).



- d. Remove any retaining rings or pins on the ends of the bail arm.



- e. Remove bail-linkage-cam assembly by pressing sides of bail toward center and removing bail ends off eyebolts.

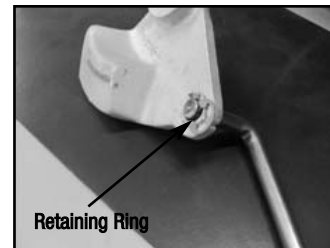


⚠ WARNING

To avoid electrical shock or explosion, electrical power must be disconnected and the area safe from hazardous gases or vapors prior to removing covers and performing maintenance.

2. Preparation of new bail-linkage-cam assembly.

- a. Remove cam from old assembly by removing retaining rings from end of linkage rod.



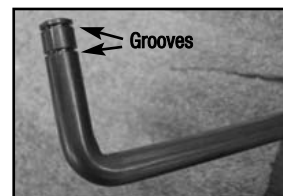
- b. Save cam and discard old bail and linkage rod.



- c. On new bail-linkage rod assembly, adjust overall length to approximately 13 inches (measured from center of eyebolt hole to bottom of linkage rod).



- d. Attach previously removed cam onto the end of the new linkage rod between the two grooves. Install new retaining clips into the grooves. Ensure casting number on cam faces away from linkage rod.



⚠ WARNING

To avoid electrical shock or explosion, electrical power must be disconnected and the area safe from hazardous gases or vapors prior to removing covers and performing maintenance.

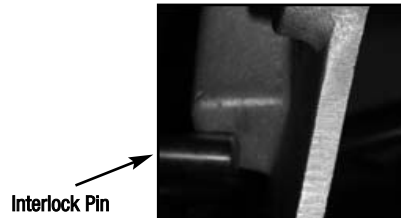
3. Installation of new bail-linkage-cam assembly.
 - a. Position bail fork over breaker operating handle (ensure bail eyebolt is located to the right of fork).



- b. Install bail ends into corresponding eye bolts on circuit breaker mounting frame. Attach a single washer then cotter pin (provided) onto each end of the bail on outside of eyebolts.



- c. While maintaining the external breaker handle in the "OFF" position, attach cam onto the end of the operating shaft with the cam as close as possible to the interlock pin. NOTE: casting part number on cam must be facing the shaft. The interlock pin should be slightly touching the cam face.



- d. Reinstall cam bolt and lock washer.
 - e. Check operation by installing plug and rotating (counter clockwise) external breaker handle to "ON". Verify plug is not removable. Return external breaker handle to "OFF" position and verify internal breaker is "OFF" prior to plug being removable. Hold external breaker handle in "OFF" position and remove plug.
 - f. Reinstall large dome cover onto EPC enclosure.

All statements, technical information and recommendations contained herein are based on information and tests we believe to be reliable. The accuracy or completeness thereof are not guaranteed. In accordance with Cooper Crouse-Hinds "Terms and Conditions of Sale," and since conditions of use are outside our control, the purchaser should determine the suitability of the product for his intended use and assumes all risk and liability whatsoever in connection therewith.
