



STATIC DISCHARGE REELS

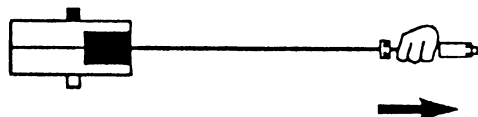
Installation & Maintenance Information

APPLICATION

Static discharge reels are used for the grounding of any accumulation of static charges on portable machines and equipment operating in hazardous areas, such as fuel transfer trucks, grain elevators, dockside loading facilities and barges. When mounted

to a clean, unpainted conductive surface (to assure electrical continuity through the reel frame), the static discharge reel dissipates static electrical build-up, reduces the chance of sparking, and the potential for explosion.

INSTALLATION



TOP VIEW

Figure 1

NOTE: For maximum efficiency, reel should be mounted in as direct a line as possible to the work area so that the cable will be pulled out as straight as possible (see Figure 1) to minimize wear on the cable.

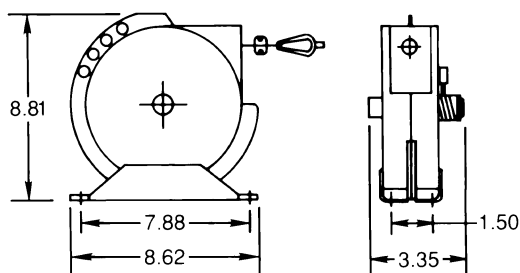


Figure 2

1. Mount reel in desired location using four holes (mounting holes are 3/8" diameter) in mounting base (see Figure 2 for dimensions).
2. Be sure to mount reel to a clean, unpainted grounded mounting surface to ensure electrical contact between the reel and mounting surface. After installation a ground continuity test must be performed to ensure positive electrical bonding between the reel and mounting surface.

WARNING

If electrical continuity is not verified between static discharge reel grounding clamp and mounting surface an unsafe static electric charge may build-up and lead to a serious explosion in hazardous areas when reel is in use.

WARNING

Bonding clamp must be connected before ignitable vapors, dusts or flyings are released to the atmosphere and disconnected only after all systems are closed and the area is deemed non-hazardous.

RATCHET LOCK USE

Engage the ratchet lock by pulling cable out to desired position and letting it retract until lock engages. To release the lock, pull cable out slightly — operation is similar to a window shade.

TENSION ADJUSTMENT

If reel will not completely wind cable so that the cable stop reaches cable guide, tension should be increased.

1. Allow cable to retract as far as possible.
2. Turn shaft counter-clockwise with a wrench until cable stop reaches cable guide.

The reel is shipped with the minimum tension required to wind installed cable. If tension must be decreased follow these steps:

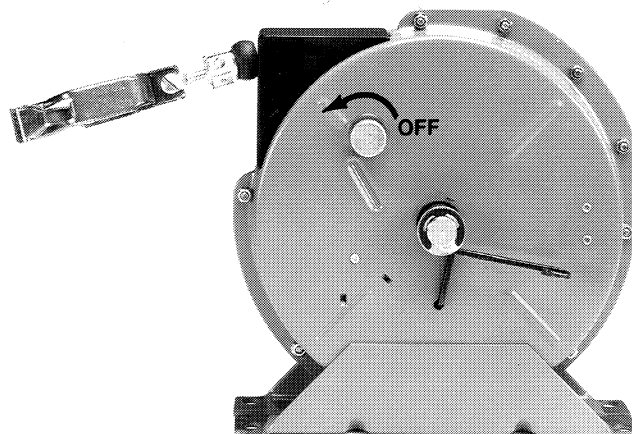


Figure 3

1. With ground clamp fully retracted, turn ratchet lock to **OFF** (see Figure 3).
2. Place wrench on flats of shaft **TO HOLD SHAFT POSITION**.
3. **WHILE HOLDING SHAFT FIRMLY WITH WRENCH**, depress spring on opposite side of reel.
4. **WHILE HOLDING SHAFT FIRMLY WITH WRENCH** allow shaft to turn **SLOWLY** in clockwise direction until desired tension is reached.

CAUTION

Do **NOT** allow the spring to unwind in an uncontrolled manner. This can result in damage to the reel or personal injury.

NOTE: If shaft will not turn in clockwise direction unassisted the reel is at minimum tension and further tension reduction should not be attempted.

WARNING

If any parts of the Static Discharge Reel appear to be missing, broken, or show signs of damage,

DISCONTINUE USE IMMEDIATELY.

Replace reel before continuing service.

MAINTENANCE

Electrical and mechanical inspection must be performed on a regular schedule determined by the environment and frequency of use. It is recommended that inspection including a ground continuity test be performed a minimum of at least once a year.

All statements, technical information and recommendations contained herein are based on information and tests we believe to be reliable. The accuracy or completeness thereof are not guaranteed. In accordance with Crouse-Hinds "Terms and Conditions of Sale", and since conditions of use are outside our control, the purchaser should determine the suitability of the product for his intended use and assumes all risk and liability whatsoever in connection therewith.


COOPER

Crouse-Hinds

Quality from
Cooper Industries

Cooper Industries Inc.
Crouse-Hinds Division
PO Box 4999
Syracuse, New York 13221 • U.S.A.

IF1265
New Issue 06/92

Copyright © 1992, Cooper Industries, Inc.