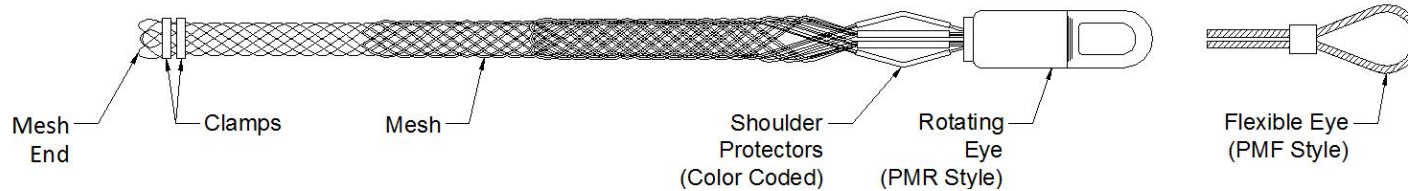


Installation of PMR or PMF Style Multi-Weave Pulling Grip



For safe and proper use of pulling grips, the following should be observed.

1. Compress the mesh and insert conductor into grip to shoulder protector as shown.
2. Remove slack from grip by smoothing mesh tight to conductor.
3. Attach two Panduit clamps to mesh approximately 1" and 2" from mesh end, using appropriate tools. Panduit clamps are recommended to insure maximum reliability and to prevent mesh from releasing.



Cooper Catalog Number		Nominal Grip Size	Color Code	Recommended Swivel	Recommended Link	Recommended Clamp	Work Load (lbs.)**	Size Range O.D. (Inches)
Rotating Eye	Flexible Eye			Pengo No.	Pengo No.	Panduit No.		
PMR2526	PMF2526	3/8	Dark Green	A-13L	PL 1/4	MS2X375X15-LS	1,300	.25 - .49
PMR5032	PMF5032	5/8	Brown	BB-13L	PL 3/8	MS2X375X15-LS	2,000	.50 - .74
PMR7541	PMF7541	7/8	Light Blue	BB-13L	PL 3/8	MS4X625X15-LS	2,900	.75 - .99
PMR10052	PMF10052	1-1/8	Gold	B-13L	PL 1/2	MS4X625X15-LS	4,900	1.00 - 1.24
PMR12556	PMF12556	1-3/8	Black	C-13L	PL 5/8	MS4X625X15-LS	6,100	1.25 - 1.49
PMR15060	PMF15060	1-5/8	Red	C-13L	PL 1/2	MS4X625X15-LS	6,100	1.50 - 1.74
PMR17570	PMR17570	2	Dark Blue	D-13L	PL 3/4	MS4X625X15-LS	9,600	1.75 - 2.24
PMR20050	PMF20050	2-1/4	Yellow	D-13L	PL 3/4	MS4X625X15-LS	9,600	2.25 - 2.49
PMR25052	PMF25052	2-3/4	Orange	D-13L	PL 3/4	MS4X625X15-LS	9,600	2.50 - 2.99
PMR30054	PMF30054	3-1/4	Aluminum	D-13L	PL 3/4	MS4X625X15-LS	9,600	3.00 - 3.49
PMR35056	PMF35056	3-3/4	Light Green	D-13L	PL 3/4	MS4X625X15-LS	9,600	3.50 - 3.99

**Rated working load is determined by using a design factor of 5 based on approximate breaking strength.

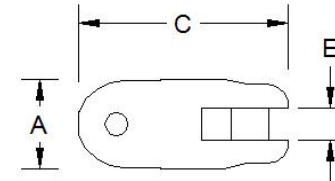
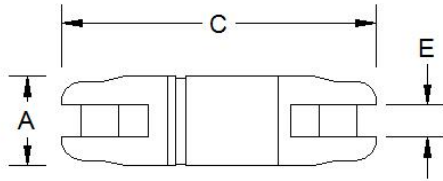
NOTES: a) Do not use for pulling rope.

Accessories

Panduit Clamps			
Panduit Catalog Number	Clamping Range (Inches)	Clamp Width (Inches)	Clamp I.D. (Inches)
MS2X375X15-LS	1/4 – 1-1/8	3/8	1-3/8
	1-1/8 - 1-5/8	3/8	2
MS4X625X15-LS	1-5/8 - 2-1/4	3/8	2-1/2
	2-1/4 - 3-1/2	3/8	4
	3-1/2 - 5	3/8	6

Panduit Clamps are applied to end of mesh to prevent it from being tripped or pulled loose. Also, they assure full gripping action by locking the mesh end to the rope or conductor.

Panduit Catalog Number
BT2MS75



Pengo-Miller Swivel Connectors				
Pengo Number	Work Load* (lbs.)	A	C	E
A-13L	1,800	7/8	3 – 3/32	5/16
BB-13L	4,000	1 - 1/4	4 – 11/32	19/32
B-13L	7,500	1 - 7/16	5 – 1/8	19/32
C-13L	10,000	1 - 7/8	7 – 1/16	3/4
D-13L	16,000	2 - 7/16	10 – 3/16	1
EE-13L	25,000	2 - 7/8	12 – 5/16	1 – 9/32

Pengo-Miller Link Connectors				
Pengo Number	Work Load* (lbs.)	A	C	E
PL-1/4	1,800	7/8	2 – 1/16	5/16
PL-3/8	4,000	1 - 1/4	2 – 5/8	19/32
PL-1/2	7,500	1 - 7/16	3 – 1/4	19/32
PL-5/8	10,000	1 - 7/8	4 – 1/8	3/4
PL-3/4	16,000	2 - 7/16	5 – 5/8	1
PL-7/8	25,000	2 - 5/8	6 – 3/8	1

*Rated working load is determined by using design factor of 5 based on approximate breaking strength.

Swivel connectors are designed for straight line pulling and will not carry side loads such as those encountered while wrapped around a bullwheel. Do not run swivels around bullwheels.

Link connectors are strong, compact pulling line connectors which permit limited movement of connected cables in two perpendicular planes. Short length and bullet-shaped nose accommodate passage thru blocks. The link does not swivel and is not intended as a swivel replacement.

Swivel is required where line rotation is a factor.