

LEVER-LOCKING QUIK-LOC CONNECTORS PORTABLE PLUG ATTACHMENT INSTRUCTIONS

FOR MALE OR FEMALE PLUGS

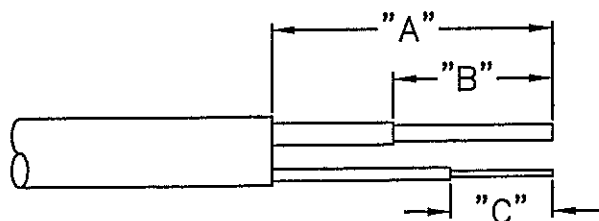
| CABLE PREPARATION DIMENSIONS | | | |
|------------------------------|-------------------|---------------------|-----------------|
| SERIES | POWER LEADS | | PILOT LEADS |
| | REMOVE JACKET "A" | SKIN CONDUCTORS "B" | SKIN PILOTS "C" |
| X8343 | 4-3/4 | 2-1/2 | 2 |
| X8344 | 4-3/4 | 2-5/8 | 2 |
| X8345 | 5-1/4 | 2-3/4 | 2 |
| X8346 | 5-1/2 | 3-1/8 | 2 |
| X8347 | 9-1/4 | 3-3/4 | 2 |

FOR USE WITH 90° CABLE.

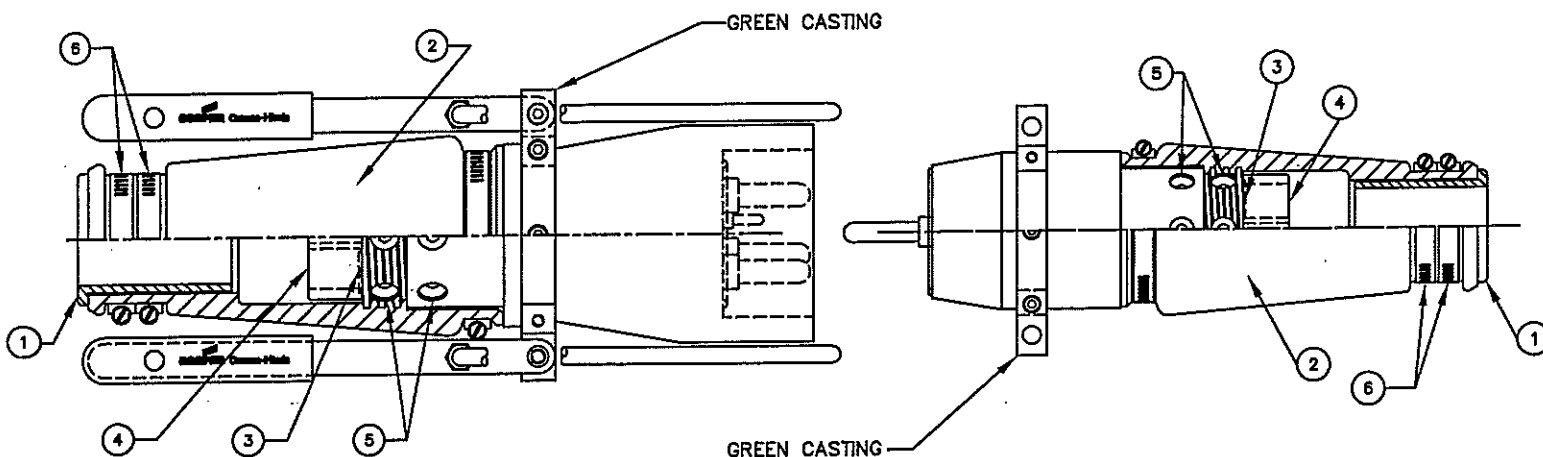
| AMPERAGE RATINGS | | |
|------------------|----------|------------|
| SERIES | AMPERAGE | CABLE SIZE |
| X8343 | 75 | #8 |
| X8344 | 115 | #4 |
| X8345 | 160 | #2 |
| X8346 | 225 | 2/0 |
| X8347 | 325 | 4/0 |

FOR MALE OR FEMALE PLUGS

| TORQUE SPECIFICATIONS | | | |
|-----------------------|------------|----------------------|---------------------|
| SERIES | SET SCREWS | HOSE CLAMP (SMALLER) | HOSE CLAMP (LARGER) |
| | FT-LBS | IN-LBS | IN-LBS |
| X8343 | 18 | 20 | 30 |
| X8344 | 18 | 20 | 30 |
| X8345 | 18 | 25 | 30 |
| X8346 | 30 | 30 | 45 |
| X8347 | 30 | 45 | 60 |



NOTICE: LEVER STYLE QUIK-LOC (L-SERIES) SHOULD NOT BE USED WITH ANY OTHER STYLE CONNECTOR, OTHER THAN LEVER STYLE QUIK-LOC (L-SERIES).



1. Prepare the cable for attachment to the LEVER-LOCKING QUIK-LOC connector in accordance with the cable preparation chart shown. Be sure to prepare the correct end of the cable for attachment.
2. Slide the grommet (1) on the cable first noting that the flange end leads (or is the farthest from the skinned conductors.)
3. Slide the neoprene sleeve (2) onto the cable, small end first.
4. Place the skinned conductors into the "pockets" (3) at the rear of the connector in the correct color rotational position. This is indicated by a single letter abbreviation of the colors molded into the back surface of the connector body (4). Tighten the screws (5) according to specifications to firmly secure each conductor.

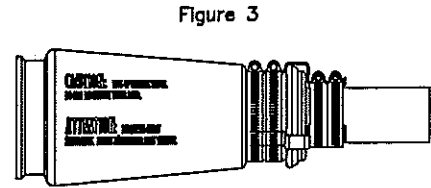
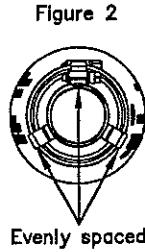
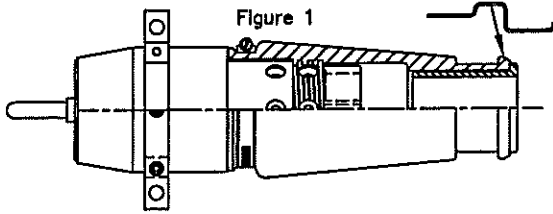
NOTE A. Be sure all power, ground and pilot circuit conductors are pushed into their respective contacts completely so that any strain applied to the cable will be evenly transmitted among the conductors.

NOTE B. After assembly of the conductors to the connector body, inspect carefully for loose or stray strands which could produce a short circuit.

5. Bring the sleeve (2) into position and screw onto the connector body. (See illustration) Slip the grommet (1) under the sleeve so that the flange butts the rear of the sleeve. Assemble and tighten the clamps (6) according to specifications to assure a watertight junction at the end of the sleeve.

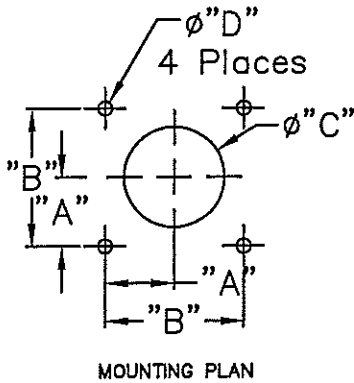
LEVER-LOCKING QUIK-LOC CONNECTORS
CLAMP LEVER AND CLAMP BAR ASSEMBLY INSTRUCTIONS

X8346 SERIES ONLY

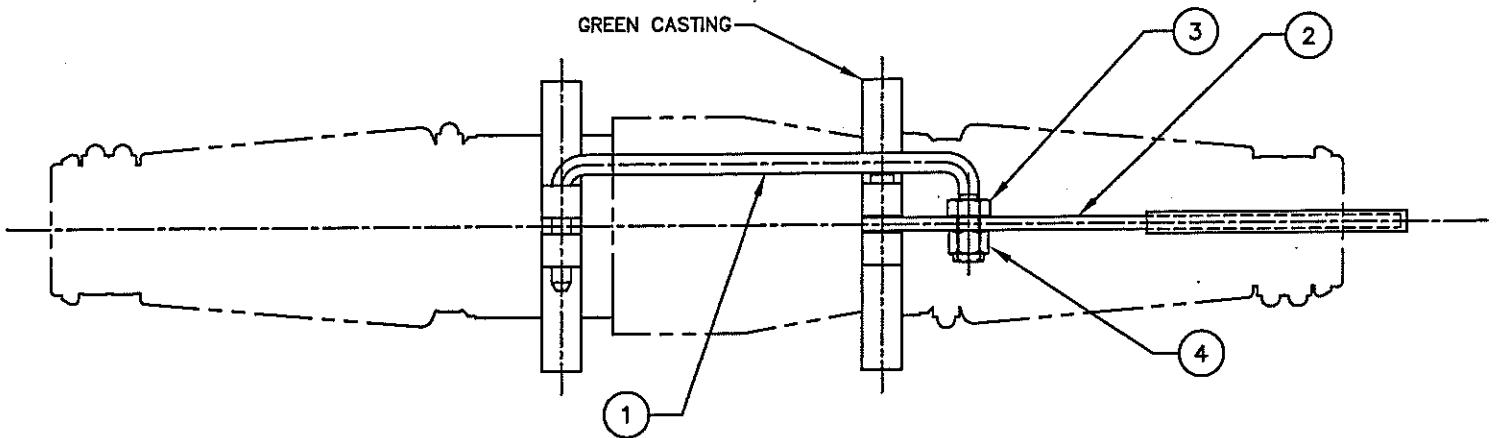


After following above steps 1-5:

6. Position metal clamps (3) as shown in figures 1 and 2. Clamps should be spaced evenly.
7. Place the 2 larger hose clamps over the metal clamps on the sleeve and tighten as shown in figure 3.
8. Place the 2 smaller hose clamps over the metal clamps on the cable and tighten as shown in figure 3.



| DIMENSIONS | | | | |
|------------|--------|-------|---------|--------|
| SERIES | "A" | "B" | ø"C" | "D" |
| X8343 | 1-3/8 | 2-3/4 | ø2 | ø9/32 |
| X8344 | 1-7/16 | 2-7/8 | ø2-5/16 | ø9/32 |
| X8345 | 1-5/8 | 3-1/4 | ø2-5/8 | ø9/32 |
| X8346 | 1-3/4 | 3-1/2 | ø3 | ø11/32 |
| X8347 | 2-3/8 | 4-3/4 | ø4 | ø13/32 |



FEMALE PLUG

MALE PLUG

1. When mating a male with a female, place the Clamp Bars (1) in the hole on the Clamp Lever (2) and place the Jam Nut (3) on top of the Clamp Lever with the Nylon Locking Nut (4) on the bottom as shown.
2. Secure Clamp Lever with wire tie through the hole provided in the lever grip.

Rev. IC-ECN001600, 4/30/14