

Applications:

- Marine and watertight requirements

Features:

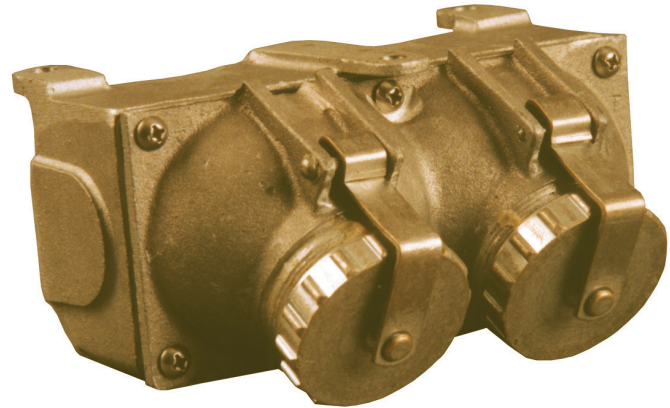
- Water shedding inverted mounting style
- Suitable for horizontal wall mount
- Watertight straight blade ANSI NEMA type receptacle
- Accepts standard ANSI NEMA type plugs
- Optional two-pole rotary switch combinations
- Available mating metal or nylon plugs with integral threaded ring maintain a watertight seal
- Neoprene gasket resists petroleum
- Cast marine brass or copper-free aluminum construction available
- Captive threaded receptacle cap
- Heavy duty mounting pads
- Silicone lubricant provided for cover screws and flange
- Available in 125 VAC and 250 VAC
- Receptacles will accept 15 or 20 ampere plugs

Certifications and compliances:

- Conforms to IP66
- ABS

Standard materials:

- Plug body – zinc plated brass with PBT enclosure (A series only); brass with PBT enclosure (B series only)
- Box and cover – cast marine brass or copper-free aluminum
- Caps and ring – marine brass or zinc plated brass
- Hardware – stainless steel
- Gasket – one-piece neoprene



Technical specifications:

- Entries – standard units undrilled; up to 3/4" NPT through feed available

Voltage and current ratings:

Receptacle

- 15/20 amperes, 125 VAC, ANSI NEMA 5-15/20R
- 15/20 amperes, 250 VAC, ANSI NEMA 6-15/20R

Switch

- 20 amperes, 120/240 VAC
- 1 HP at 120 VAC or 2 HP at 240 VAC

Plug

- 15 amperes, 125 VAC, ANSI NEMA 5-15P
- 20 amperes, 125 VAC, ANSI NEMA 5-20P
- 15 amperes, 250 VAC, ANSI NEMA 6-15P
- 20 amperes, 250 VAC, ANSI NEMA 6-20P

Options:

Description

- 250 VAC..... **250^A**

Suffix

Entry options:

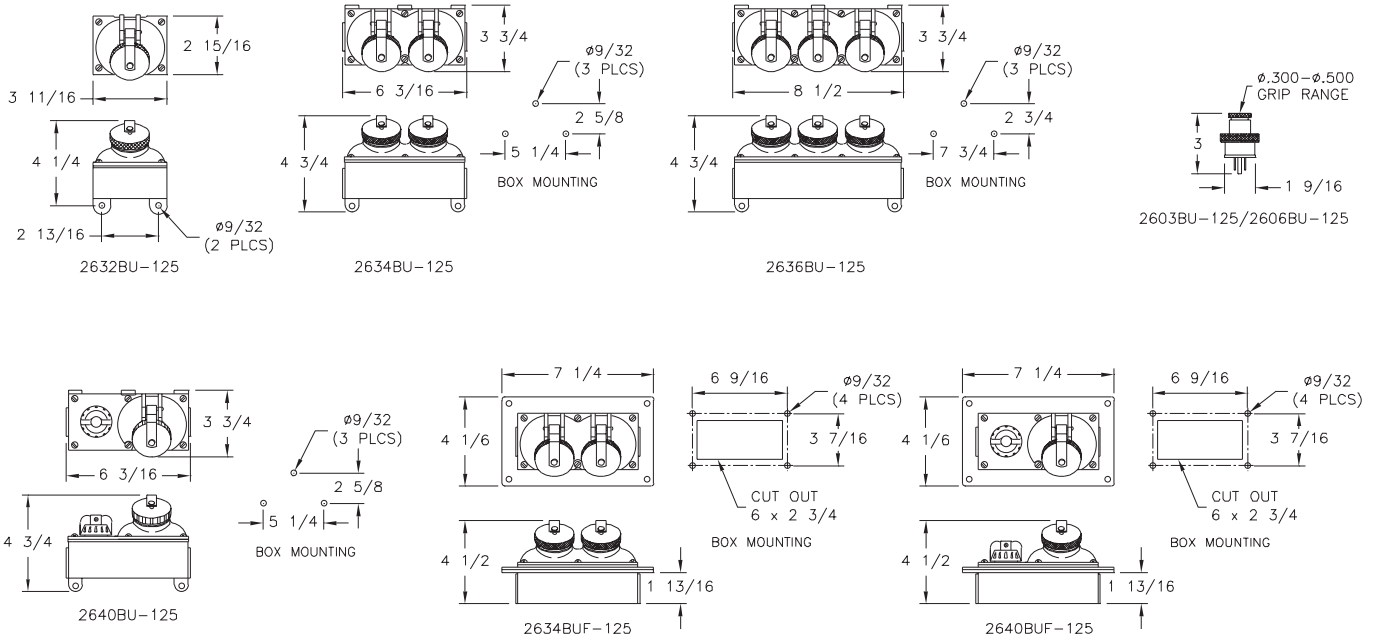
NPT trade size	Dead end	Through feed
1/2"	E1	C1
3/4"	E2	C2

Ordering information:

Cat. #	Description	Material	Weight (lbs.)
2632BU-125	Surface mount, one receptacle	Marine brass	2.75
2634BU-125	Surface mount, two receptacles	Marine brass	4.75
2636BU-125	Surface mount, three receptacles	Marine brass	6.50
2640BU-125	Surface mount, one receptacle with switch	Marine brass	4.75
2634BUF-125	Flush mount, two receptacles	Marine brass	5.75
2640BUF-125	Flush mount, one receptacle with switch	Marine brass	5.50
2632AU-125	Surface mount, one receptacle	Aluminum	1.00
2634AU-125	Surface mount, two receptacles	Aluminum	2.10
2603BU-125	Plug, 15 amperes	Marine brass	0.80
2606BU-125	Plug, 20 amperes	Marine brass	0.80
2603AU-125	Plug, 15 amperes	Aluminum	0.80
2606AU-125	Plug, 20 amperes	Aluminum	0.80

^A Replace '125' in catalog number.

Dimensions (in inches):



12P

Applications:

- Marine and watertight requirements

Features:

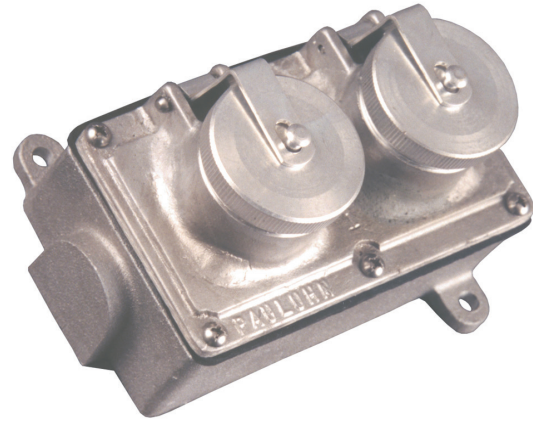
- Extended cover provides additional wiring capacity
- Wall or surface mount
- Watertight straight blade ANSI NEMA type receptacle
- Accepts standard ANSI NEMA type plugs
- Optional two-pole rotary switch combinations
- Available mating metal or nylon plugs with integral threaded ring maintain a watertight seal
- Neoprene gasket resists petroleum
- Cast marine brass or copper-free aluminum construction available
- Captive threaded receptacle cap
- Heavy duty mounting pads
- Silicone lubricant provided for cover screws and flange
- Available in 125 VAC and 250 VAC
- Receptacles will accept 15 or 20 ampere plugs

Certifications and compliances:

- Conforms to IP66
- ABS

Standard materials:

- Plug body – zinc plated brass with PBT enclosure (A series only); brass with PBT enclosure (B series only)
- Box and cover – cast marine brass or copper-free aluminum
- Caps and ring – marine brass or zinc plated brass
- Hardware – stainless steel
- Gasket – one-piece neoprene



Technical specifications:

- Entries – standard units undrilled; up to 3/4" NPT through feed available

Voltage and current ratings:

Receptacle

- 15/20 amperes, 125 VAC, ANSI NEMA 5-15/20R
- 15/20 amperes, 250 VAC, ANSI NEMA 6-15/20R

Switch

- 20 amperes, 120/240 VAC
- 1 HP at 120 VAC or 2 HP at 240 VAC

Plug

- 15 amperes, 125 VAC, ANSI NEMA 5-15P
- 20 amperes, 125 VAC, ANSI NEMA 5-20P
- 15 amperes, 250 VAC, ANSI NEMA 6-15P
- 20 amperes, 250 VAC, ANSI NEMA 6-20P

Options:

Description	Suffix
• 250 VAC.....	250A

Entry options:

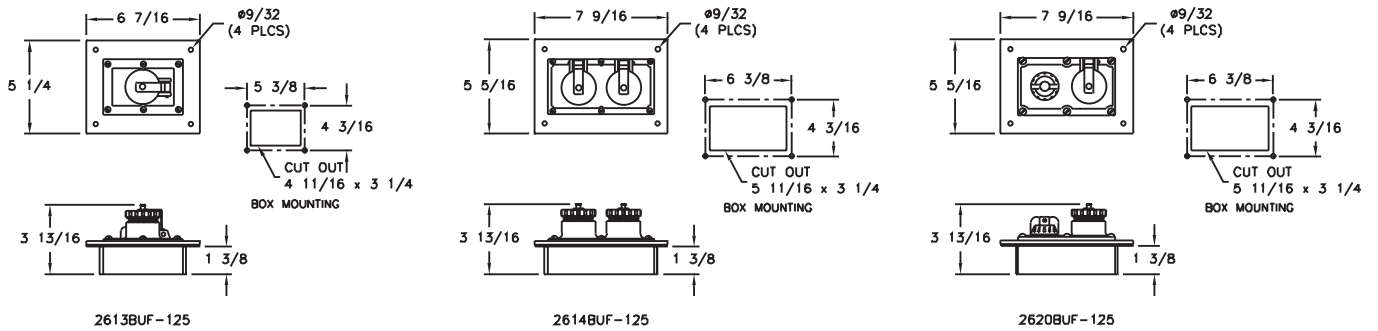
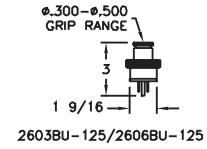
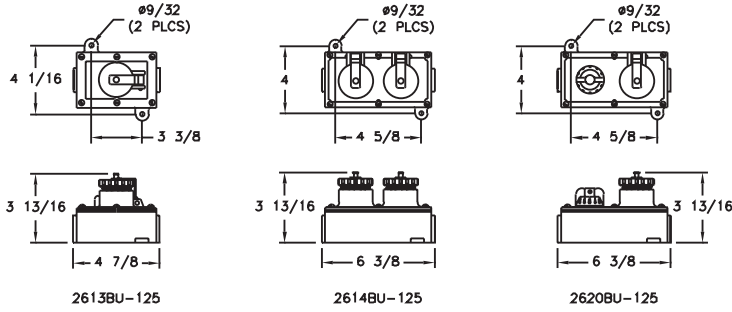
NPT trade size	Dead end	Through feed
1/2"	E1	C1
3/4"	E2	C2

Ordering information:

Cat. #	Description	Material	Weight (lbs.)
2613BU-125	Surface mount, one receptacle	Marine brass	4.0
2614BU-125	Surface mount, two receptacles	Marine brass	5.5
2620BU-125	Surface mount, one receptacle with switch	Marine brass	5.5
2613BUF-125	Flush mount, one receptacle	Marine brass	4.5
2614BUF-125	Flush mount, two receptacles	Marine brass	6.5
2620BUF-125	Flush mount, one receptacle with switch	Marine brass	6.5
2614AU-125	Surface mount, two receptacles	Aluminum	2.0
2603BU-125	Plug, 15 amperes	Marine brass	0.8
2606BU-125	Plug, 20 amperes	Marine brass	0.8
2603AU-125	Plug, 15 amperes	Aluminum	0.8
2606AU-125	Plug, 20 amperes	Aluminum	0.8

^AReplace '125' in catalog number.

Dimensions (in inches):



Applications:

- Marine and watertight requirements

Features:

- Wall or surface mount
- Watertight straight blade ANSI NEMA type receptacle
- Accepts standard ANSI NEMA type plugs
- Optional two-pole rotary switch combinations
- Available mating metal or nylon plugs with integral threaded ring maintain a watertight seal
- Neoprene gasket resists petroleum
- Cast marine brass or copper-free aluminum construction available
- Captive threaded receptacle cap
- Heavy duty mounting pads
- Silicone lubricant provided for cover screws and flange
- Available in 125 VAC and 250 VAC
- Receptacles will accept 15 or 20 ampere plugs

Certifications and compliances:

- Conforms to IP66
- ABS

Standard materials:

- Plug body – zinc plated brass with PBT enclosure (A series only); brass with PBT enclosure (B series only)
- Box and cover – cast marine brass or copper-free aluminum
- Caps and ring – marine brass or zinc plated brass
- Hardware – stainless steel
- Gasket – one-piece neoprene

Technical specifications:

- Entries – standard units undrilled; up to 3/4" NPT through feed available

Voltage and current ratings:

Receptacle

- 15/20 amperes, 125 VAC, ANSI NEMA 5-15/20R
- 15/20 amperes, 250 VAC, ANSI NEMA 6-15/20R

Switch

- 20 amperes, 120/240 VAC
- 1 HP at 120 VAC or 2 HP at 240 VAC

Plug

- 15 amperes, 125 VAC, ANSI NEMA 5-15P
- 20 amperes, 125 VAC, ANSI NEMA 5-20P
- 15 amperes, 250 VAC, ANSI NEMA 6-15P
- 20 amperes, 250 VAC, ANSI NEMA 6-20P



Mounting option:

- Surface mount, via two maximum 1/4" mounting bolts (not included)

Options:

Description	Suffix
• 250 VAC.....	250 ^A

Entry options:

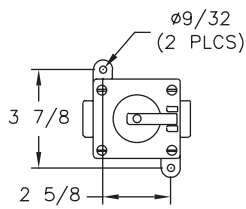
NPT trade size	Dead end	Through feed
1/2"	E1	C1
3/4"	E2	C2

^A Replace '125' in catalog number.

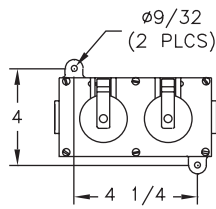
Ordering information:

Cat. #	Description	Material	Weight (lbs.)
2583B-125	One receptacle	Marine brass	3.0
2584B-125	Two receptacles	Marine brass	4.0
2587B-125	One receptacle with switch	Marine brass	4.0
2503B-125	Plug, 15 amperes	Marine brass	0.8
2506B-125	Plug, 20 amperes	Marine brass	0.8
2583A-125	One receptacle	Aluminum	1.0
2584A-125	Two receptacles	Aluminum	1.5
2503A-125	Plug, 15 amperes	Aluminum	0.8
2506A-125	Plug, 20 amperes	Aluminum	0.8

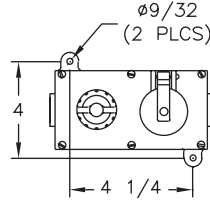
Dimensions (in inches):



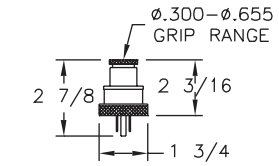
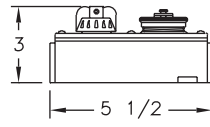
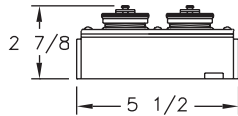
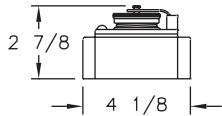
2583B-125



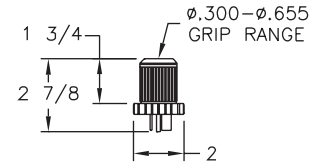
2584B-125



2587B-125



2503B-125/2506B-125



2503N-125/2506N-125

12P

Applications:

- Marine and watertight requirements

Features:

- Water shedding wall mount design
- Watertight straight blade ANSI NEMA type receptacle
- Accepts standard ANSI NEMA type plugs
- Optional two-pole rotary switch combinations
- Available mating metal or nylon plugs with integral threaded ring maintain a watertight seal
- Neoprene gasket resists petroleum
- Cast marine brass or copper-free aluminum construction available
- Captive threaded receptacle cap
- Heavy duty mounting pads
- Silicone lubricant provided for cover screws and flange
- Available in 125 VAC and 250 VAC
- Receptacles will accept 15 or 20 ampere plugs

Certifications and compliances:

- Conforms to IP66
- ABS

Standard materials:

- Plug body – zinc plated brass with PBT enclosure (A series only); brass with PBT enclosure (B series only); nylon (N series only)
- Box and cover – cast marine brass or copper-free aluminum
- Caps and ring – marine brass or zinc plated brass
- Hardware – stainless steel
- Gasket – one-piece neoprene

Technical specifications:

- Entries – standard units undrilled; up to 3/4" NPT through feed available

Voltage and current ratings:

Receptacle

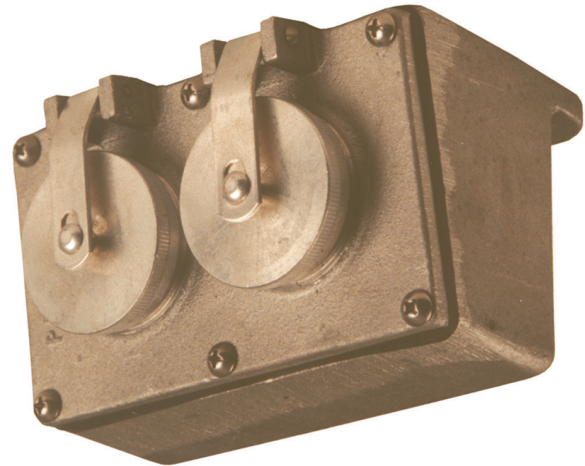
- 15/20 amperes, 125 VAC, ANSI NEMA 5-15/20R
- 15/20 amperes, 250 VAC, ANSI NEMA 6-15/20R

Switch

- 20 amperes, 120/240 VAC
- 1 HP at 120 VAC or 2 HP at 240 VAC

Plug

- 15 amperes, 125 VAC, ANSI NEMA 5-15P
- 20 amperes, 125 VAC, ANSI NEMA 5-20P
- 15 amperes, 250 VAC, ANSI NEMA 6-15P
- 20 amperes, 250 VAC, ANSI NEMA 6-20P



Mounting option:

- Surface mount, via two maximum 1/4" mounting bolts (not included)

Options:

Description	Suffix
• 250 VAC.....	250^A

Entry options:

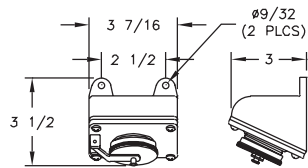
NPT trade size	Dead end	Through feed
1/2"	E1	C1
3/4"	E2	C2

^A Replace '125' in catalog number.

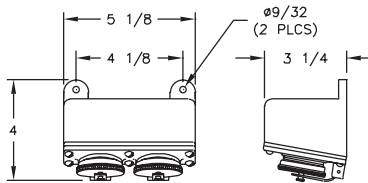
Ordering information:

Cat. #	Description	Material	Weight (lbs.)
2590B-125	One receptacle	Marine brass	3.0
2592B-125	Two receptacles	Marine brass	5.0
2597B-125	One receptacle with switch	Marine brass	4.0
2503B-125	Plug, 15 amperes	Marine brass	0.8
2506B-125	Plug, 20 amperes	Marine brass	0.8
2590A-125	One receptacle	Aluminum	1.0
2592A-125	Two receptacles	Aluminum	1.8
2503A-125	Plug, 15 amperes	Aluminum	0.8
2506A-125	Plug, 20 amperes	Aluminum	0.8
2503N-125	Plug, 15 amperes	Nylon	0.5
2506N-125	Plug, 20 amperes	Nylon	0.5

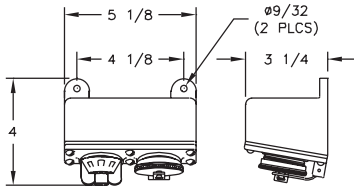
Dimensions (in inches):



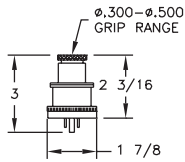
2590B/A-125



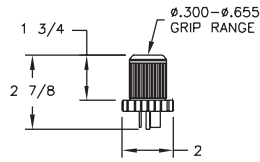
2592B/A-125



2597B/A-125



2503B/A-125
2506B/A-125



2503N-125/2506N-125