

Eaton Hydraulics Inc.
14615 Lone Oak Road
Eden Prairie, MN 55344-2287
United States of America

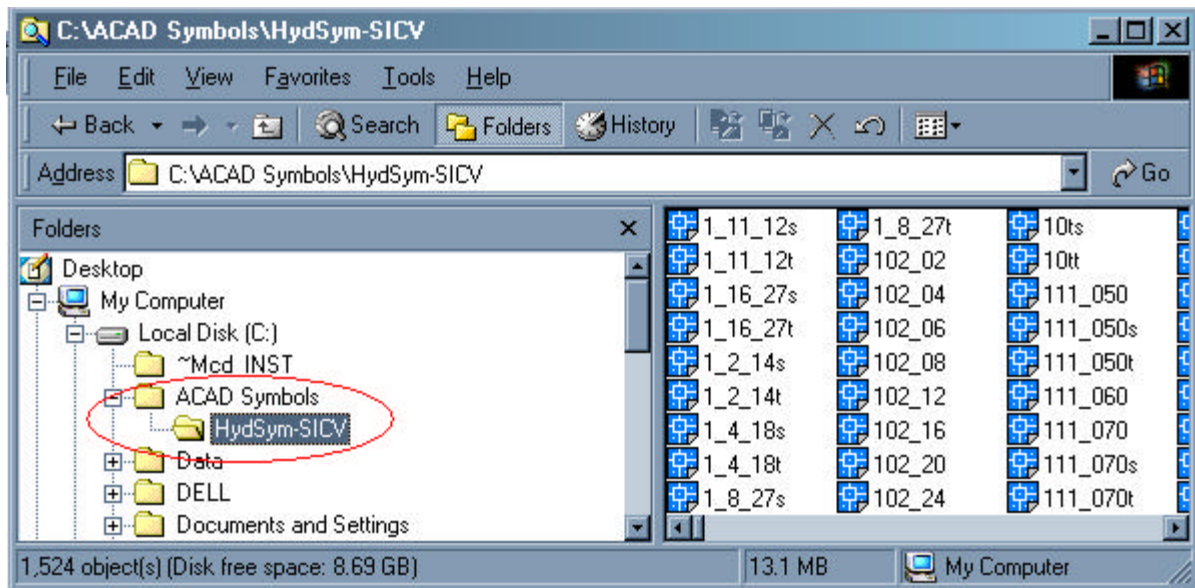


Instructions how to set up this Eaton Hydraulics SiCV symbol library for AutoCAD 2002

Steps:

1. Unzip the contents of the EatonSymbols2002(Dec05).zip file to c:/
You should have the following directory tree:

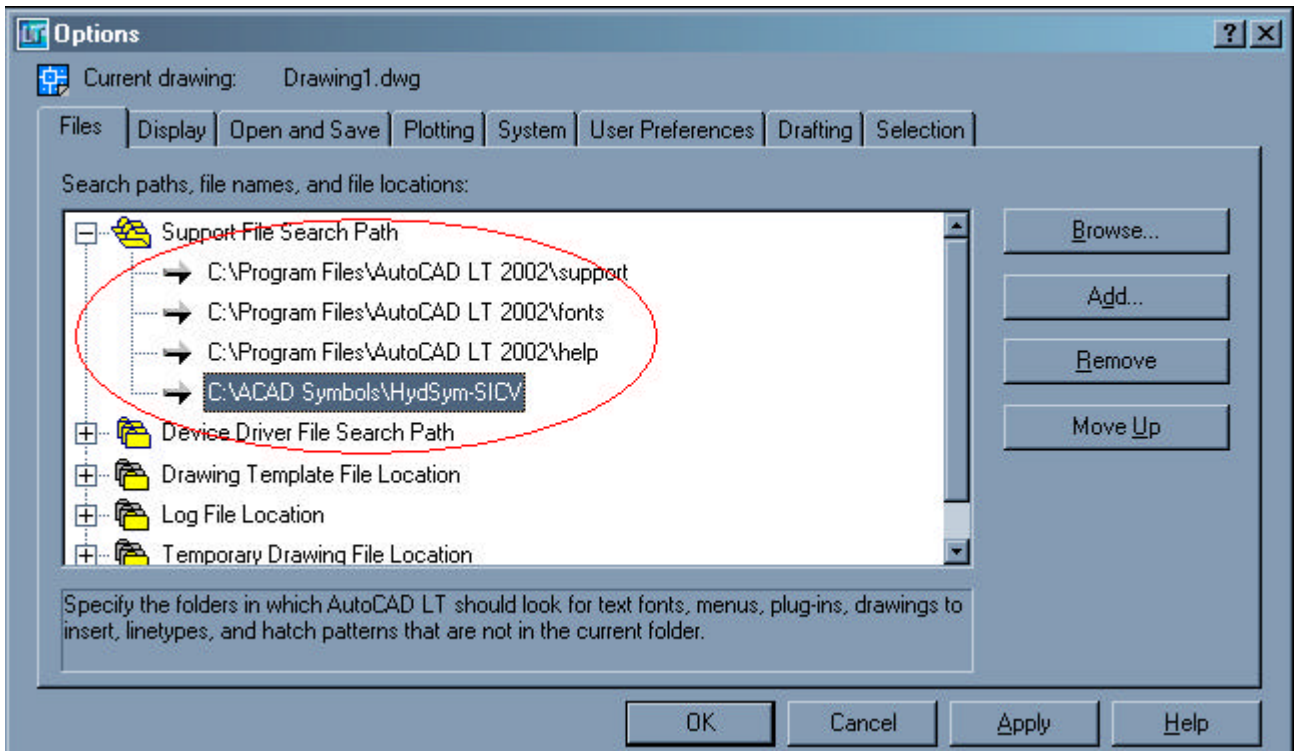
C:/ACAD Symbols	- two MNU files and this READ_ME
C:/ACAD Symbols/HydSym-SiCV	- Blocks for Eaton SiCV components



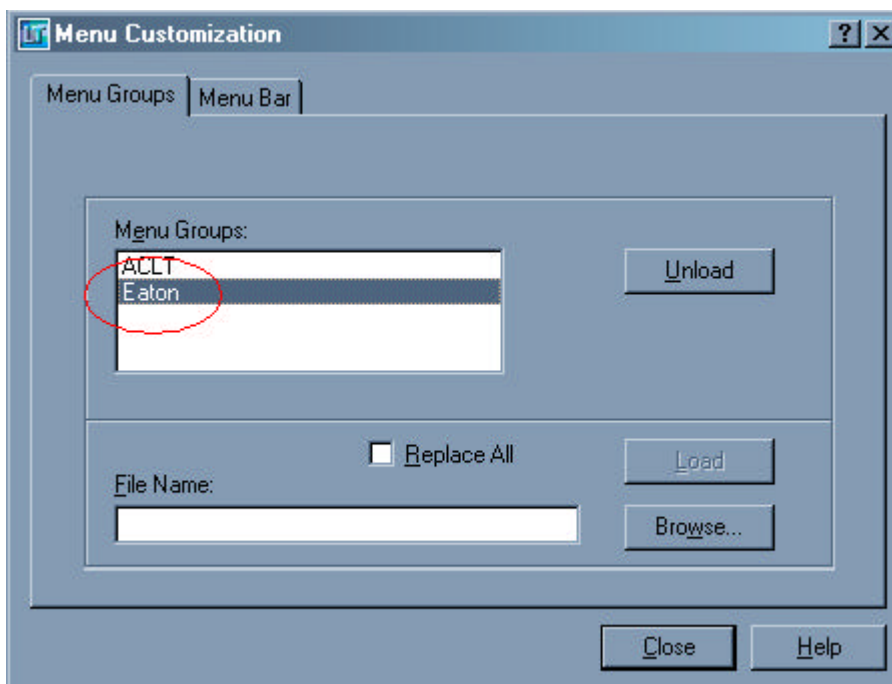
2. Next, start AutoCAD and do the following:

Choose Tools-Options, then choose the "files" tab, add the file paths listed in (1.) above to the searchpath

Note – you may be prompted to exit and restart AutoCAD after you have made these changes.

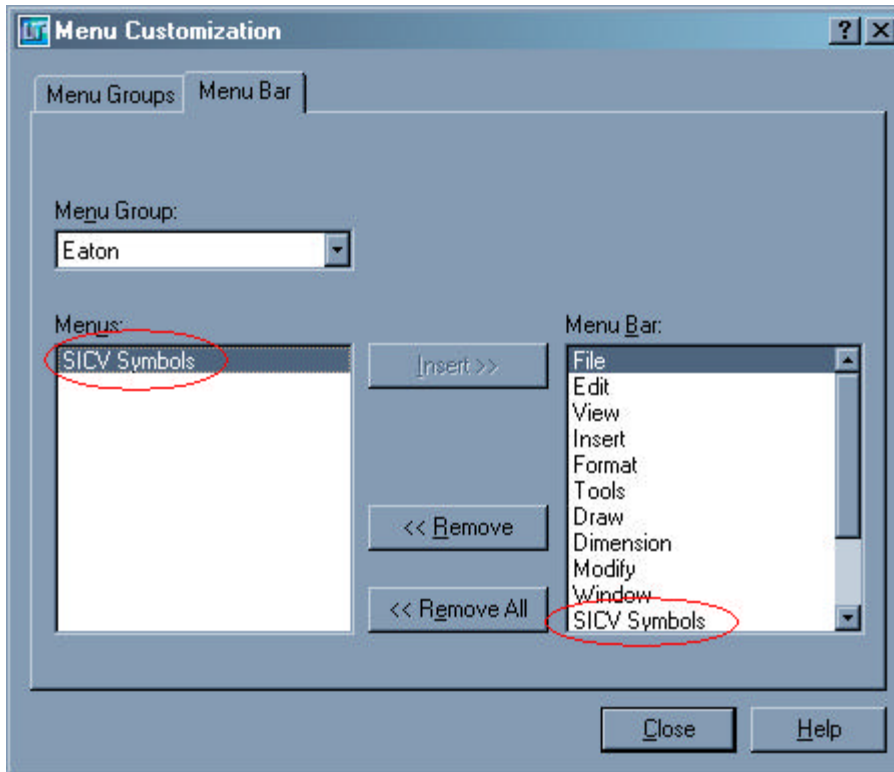


3. At the AutoCAD command line type “menuload”, select the ‘menugroups’ tab, click “Browse” and select the relevant MNU file for you version of AutoCAD, click “load”, then “yes”....

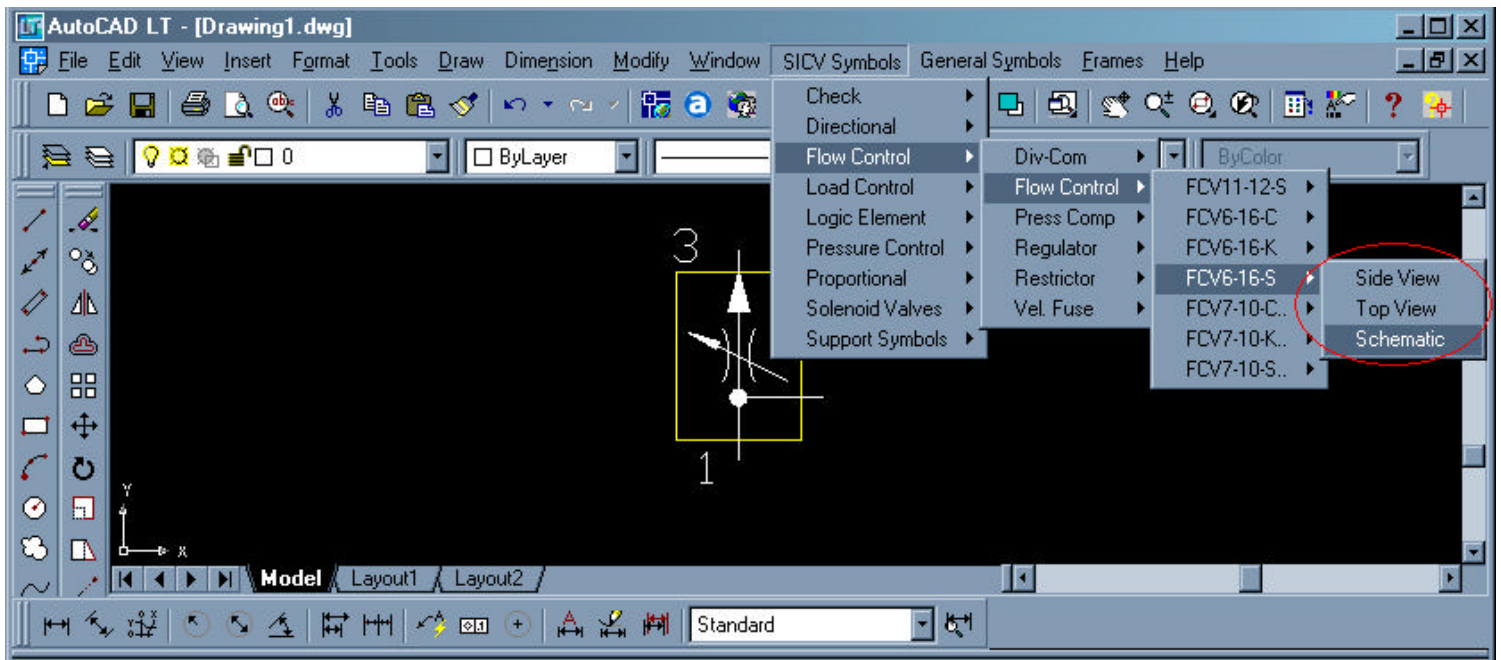


4. Select the “Menu Bar” tab, highlight “help” in the “Menubar” list (right hand side window) - (do this by selecting it – click on it to select it). Next select “Eaton” from the “menuGroup” list box –

(the list box on the top left of the window). Next, select, and then click “insert” for each of “SICV Symbols” and “General Symbols”– these will appear in the “Menu’s” Window – (left side window).



In this way pull down menu groups will be added to AutoCAD, these menus will be retained by AutoCAD.



That's it you're done!