

# Relief Valves

---



## Solenoid Controlled Pilot Operated Relief Valves

(F3)-C/G/S/T5-(H)-10\*\*\*(V)\*\*(V)-M-(S\*)\*\*\*\*\*(L)\*\*\*\*\*-100/110-EN\*\*

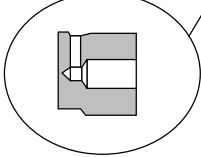
**\* Note**

On CG5-(H)10\*\*\*C\*-100/110 dual solenoid models, pilot valve & cover S/A are rotated 90° clockwise from body. Refer to pilot valve drawing for parts breakdown.

\* Pilot Valve (See Table)  
(DG4V-3(S)-\*C-60 Shown)

- ▲ 232332 'O'Ring (4 Req'd)
- 329463 Restriction plug
- ▲ 263497 'O'Ring
- 329463 Plug  
Torque 53-58 N.m.  
(39-43 lb. ft.)

■ 285601 Seat



Assemble 285601 seat with cross hole facing up as shown.

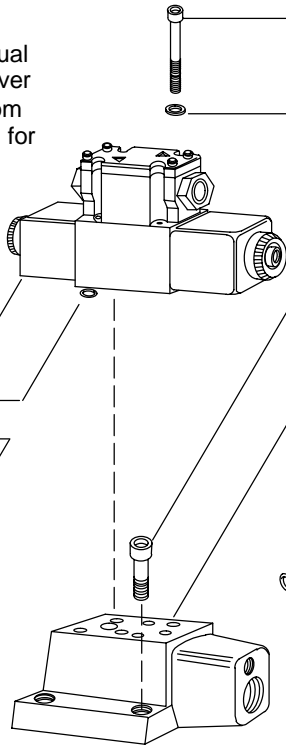
■▲ 262367 'O'Ring

Spring (See Table)

283952 Piston

Seat (See Table)

Sleeve ('H' High Flow Models Only)  
(See Table)



696892 Bolt Kit (Includes 4 Bolts)  
Torque 5.6 N.m. (50 lb. in.) Maximum

68905 Washer (4 Req'd)

1074 Screw (4 Req'd)  
Torque 54.2-67.7 N.m. (40-50 lb. ft.)

■ Cover (See Table)

■ 343704 Plug &  
▲ 263494 'O'Ring (See Table)

■ 398071 Plug &  
Y 263492 'O'Ring (See Table)

⊕ ◆ ■ 292230 Screw

■ 326317 Shim  
(As req'd to obtain  
proper adj. range)

■ 1485 Locknut

⊕ ◆ ■ 283949 Retainer

■ 64520 Washer

■ 283948 Plunger

▲ ■ 262332 'O'Ring

■ Washer (See Table)

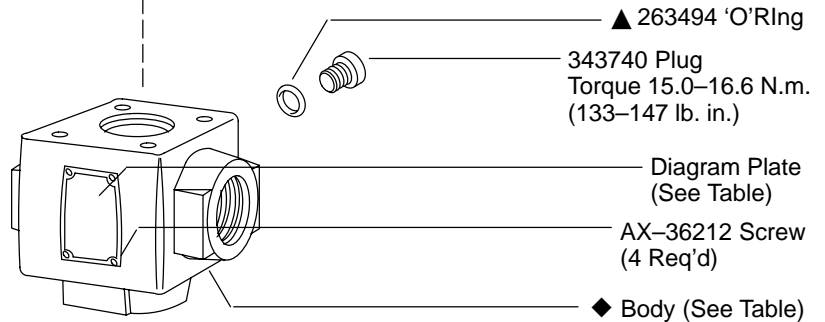
■ 422849 Spacer

■ Cover Spring  
(See Table)

■ 290057 Piston

MODEL	SEAT	SLEEVE
C*5-10	283954	—
C*5-H10	587996	400730

MODEL	■ COVER S/A
C*5-(H)100A/F-B(V)-100/110	942456
C*5-(H)100A/F-C(V)-100/110	942457
C*5-(H)100A/F-F(V)-100/110	942458
C*5-(H)101A-B(V)-100/110	942459
C*5-(H)102A-B(V)-100/110	
C*5-(H)10*C-B(V)-100/110	942460
C*5-(H)101A-C(V)-100/110	
C*5-(H)102A-C(V)-100/110	942461
C*5-(H)10*C-C(V)-100/110	
C*5-(H)101A-F(V)-100/110	942461
C*5-(H)102A-F(V)-100/110	
C*5-(H)10*C-F(V)-100/110	



▲ 263494 'O'Ring

343740 Plug  
Torque 15.0-16.6 N.m.  
(133-147 lb. in.)

Diagram Plate  
(See Table)

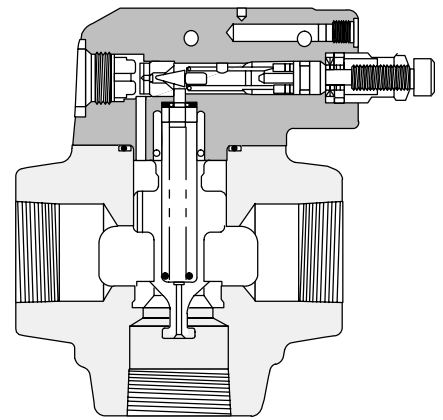
AX-36212 Screw  
(4 Req'd)

◆ Body (See Table)

MODEL	◆ BODY
CT5-10**-*-100/110	590300
CS5-(H)10**-*-100/110	580430

MODEL	DIAGRAM PLATE	* PILOT VALVE
C*5-(H)100A(P)-*(V)-M-***-100	422864	DG4V-3S-0BL-M***-60
C*5-(H)100A(P)-*(V)-M-***-110		DG4V-3-0BL-M***-60
C*5-(H)101A(P)-*(V)-M-***-100	422865	DG4V-3S-2AL-M***-60
C*5-(H)101A(P)-*(V)-M-***-110		DG4V-3-2AL-M***-60
C*5-(H)102A(P)-*(V)-M-***-100	423814	DG4V-3S-2BL-M***-60
C*5-(H)102A(P)-*(V)-M-***-110		DG4V-3-2BL-M***-60
C*5-(H)100C-*(V)-M-***-100	422862	DG4V-3S-0C-M***-60
C*5-(H)100C-*(V)-M-***-110		DG4V-3-0C-M***-60
C*5-(H)102C-*(V)-M-***-100	422863	DG4V-3S-2C-M***-60
C*5-(H)102C-*(V)-M-***-110		DG4V-3-2C-M***-60
C*5-(H)100F(P)-*(V)-M-***-100	_____	DG4V-3S-0FL-M***-60
C*5-(H)100F(P)-*(V)-M-***-110		DG4V-3-0FL-M***-60

\* Refer to pilot valve drawing for parts breakdown.



Relief valve sectional view without pilot valve

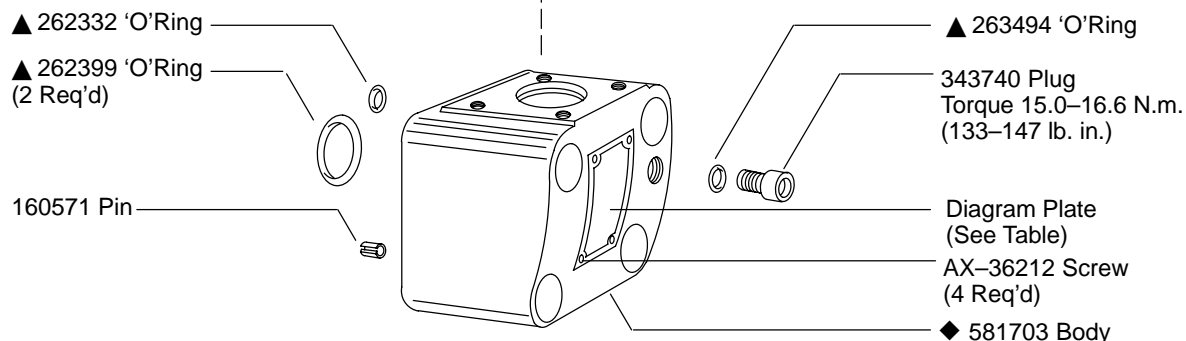
MODEL	■ COVER	■ PLUG/'O'RING (2 REQ'D)	■ PLUG/'O'RING
C*5-(H)100A-100/110	422852	_____	_____
C*5-(H)101A-100/110	424204	343740/▲ 263494	398071/▲ 263492
C*5-(H)102A-100/110			
C*5-(H)10*C-100/110			

MODEL	■ WASHER	■ COVER SPRING	SPRING
C*5-10**-B-100/110	_____	2280	291822
C*5-H10**-BV-100/110			291821
C*5-10**-C-100/110	233110	583937	291822
C*5-H10**-CV-100/110			291821
C*5-10**-F-100/110	_____	2281	291822
C*5-H10**-FV-100/110			291821

- Included In Cover S/A
- ▲ Included In F3 Seal Kit 696930 (includes pilot valve seals)
- ⊕ Lubricate With Oil Before Assembly
- ◆ Not Available For Sale

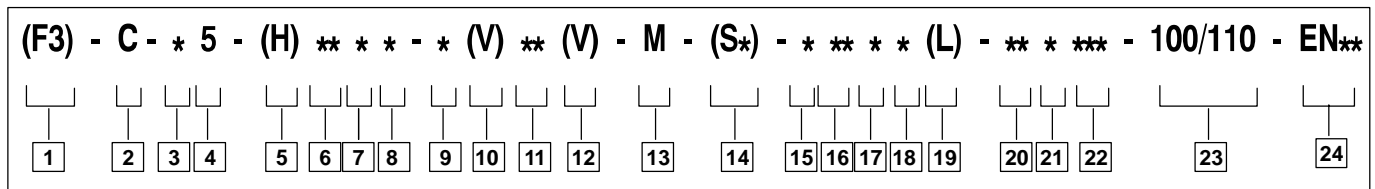
**Note**

Parts Prefixed With A Symbol Available Only In Kits.



CG5-(H)10\*\*-\*-100/110

# Model Code



- 1** Seals for mineral oil & fire resistant fluids
- 2** Relief valve
- 3** Connections  
G – Subplate mounting  
S – Straight threads  
T – NPTF threads
- 4** Solenoid controlled
- 5** High flow  
Omit for standard models
- 6** Valve size  
10 – 1–1/4”–1.6250 straight thread or 1–1/4” NPTF
- 7** Pilot spool function  
0,1, or 2 Indicates venting condition
- 8** Pilot spool spring arrangement  
A – Spring offset  
C – Spring centered  
F – Spring centered, shift to center
- 9** Pressure range  
B – 125–1000 psi  
C – 500–2000 psi  
F – 1500–3000 psi
- 10** High vent (Req'd for high flow models)  
Blank – Omit for low vent models
- 11** Manual override options (included in pilot valve model code)  
Blank – Plain override solenoid ends only  
H – Waterproof override solenoid ends only  
H2 – Waterproof override both ends of single solenoid  
M – Serviceable manual overrides in solenoid ends only  
P2 – Plain override both ends of single solenoid  
Y – Lockable manual overrides solenoid ends only  
Z – No overrides in either end
- 12** Solenoid energization identity  
Blank – Standard arrangement for ANSI B93 9 (energise solenoid A for flow P to A port)  
V – Solenoid identification determined by position of solenoid. (Solenoid A at port A end and/or solenoid B at port B end. (All 4 & 8 spools are always V code)
- 13** Flag symbol heading electrical options & features
- 14** Spool position monitoring switch (tank pressure rating 10 bar only)  
S1 – Switch, normally open, U coils only  
S2 – Switch, normally closed, U coils only  
S3 – Switch, wired normally open, P\*  
S4 – Switch, wired normally closed, P\*  
S5 – Switch, free leads, FW & FJ only
- 15** Coil type  
U – ISO 4400  
F – Flying lead  
SP1 – Single 6,3 series spade to IEC 760  
SP2 – Dual 6,3 series spade to IEC 760
- 16** Electrical connections (F type coil only) omit if not required  
T – Wired terminal block  
PA – Instaplug male receptacle only  
PB – Instaplug male & female receptacle  
PA3 – Three pin connector  
PA5 – Five pin connector
- 17** Housing (F type coils only)  
W – 1/2 NPT thread wiring housing  
J – 20 mm thread wiring housing
- 18** Electrical options  
1 – ISO with fitted plug, U type coils only  
6 – ISO with fitted plug, with lights, U type coils only
- 19** Solenoid indicator lights (F build only) To be used with T terminal block models. (Omit if not required)
- 20** Coil identification
- 21** Pilot valve code (tank pressure rating)  
2 – 10 bar (145 psi) use with switch models S\*  
5 – 100 bar (1450 psi) DG4V–3S–60  
6 – 160 bar (2300 psi) DG4V–3–60  
7 – 210 bar (3000 psi) DG4V–3–60
- 22** Pilot valve port orifices
- 23** Design  
100 – DG4V3S–60  
Standard pilot valve  
110 – DG4V3–60  
High performance pilot valve
- 24** Special modifications (omit if not required)

**11** Thru **22** included in pilot valve model code