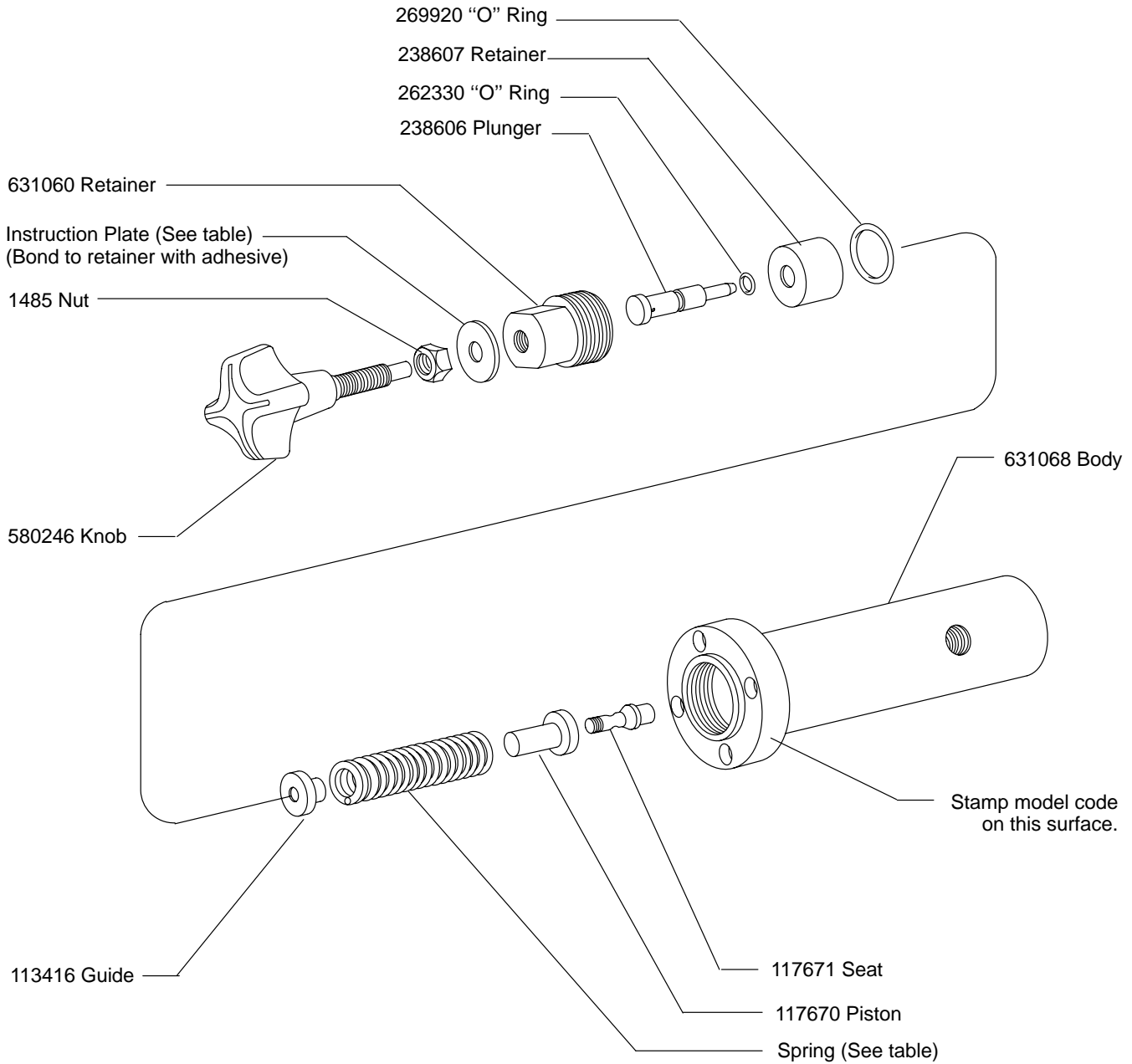


Relief Valves



Remote Control Pressure Relief Valves

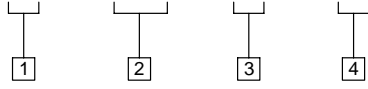
C-175-*-20



Model	Spring	Pressure Range	Instruction Plate
C-175-B-20	152609	75-1000	631057
C-175-C-20	152610	500-2000	631058
C-175-F-20	135007	1500-3000	631059

Model Code

C - 175 - * - 20



1 Model Series

C - Relief Valve

2 Series

175

3 Pressure Range

B - 75-1000
C - 500-2000
F - 1500-3000

4 Design

For satisfactory service life of these components, use full flow filtration to provide fluid which meets ISO cleanliness code 18/15 or cleaner. Selections from Eaton OFP, OFR and OFRS filter series are recommended.

Printed in U.S.A.