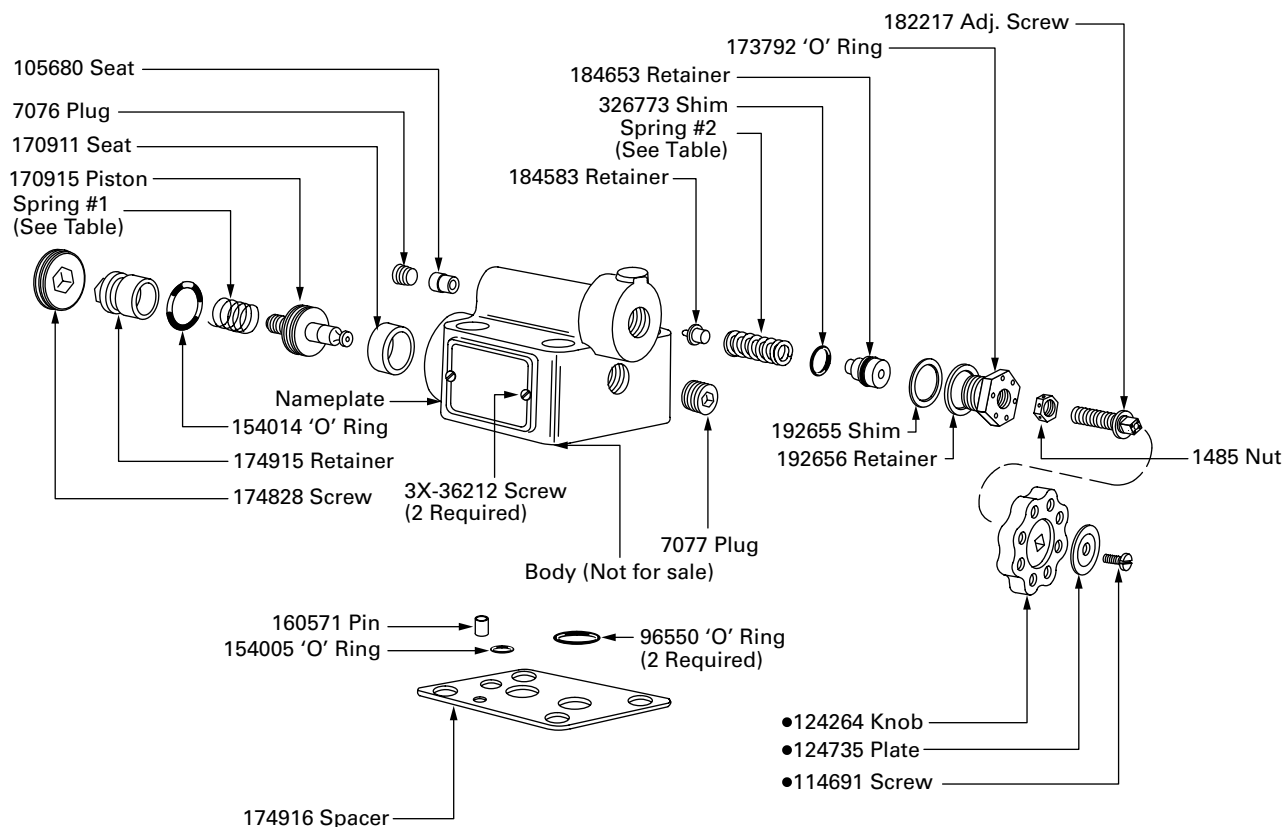


High pressure relief valves

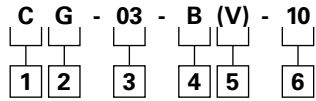
CG-03-* *-10

| Model | Pressure range | Spring #1 | Spring #2 |
|-------------|----------------|-----------|-----------|
| CG-03-B-10 | 90 - 1000 | 175070 | 175071 |
| CG-03-C-10 | 500 - 2000 | | 175072 |
| CG-03-F-10 | 1500 - 3000 | | 175073 |
| CG-03-BV-10 | 75 - 1000 | 184458 | 175071 |
| CG-03-CV-10 | 500 - 2000 | | 175072 |
| CG-03-FV-10 | 1500 - 3000 | | 175073 |



● Models with handwheel controls are available. Specify in model code by adding suffix -S81.
Example: CG-03-* -10-S81

Model code breakdown



1 Relief valve

2 Mounting type

G Manifold or Subplate

3 Valve size

03 3/8" Nominal size

4 Pressure range

B 75-1000 psi

C 500-2000 psi

F 1500-3000 psi

5 High vent spring

Omit if not required

6 Design

Eaton
1000 Eaton Boulevard
Cleveland, OH 44122
United States
Eaton.com

© 2019 Eaton
All Rights Reserved
Printed in USA
Document No. I-3401-S
January 2019