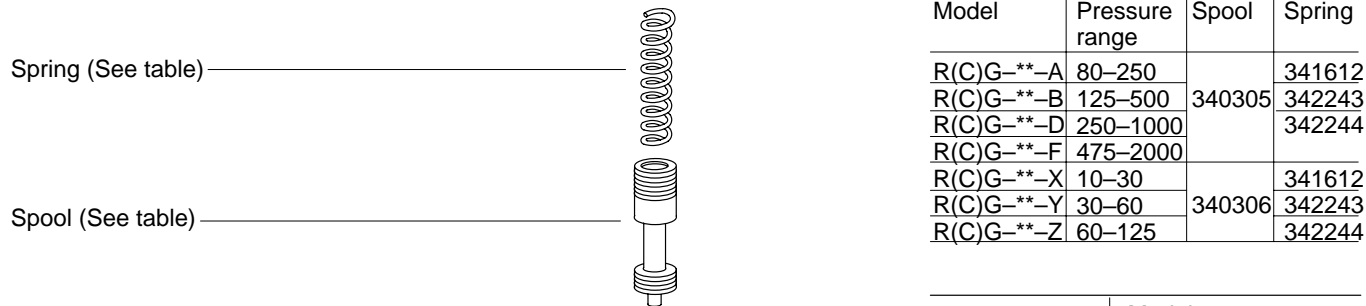
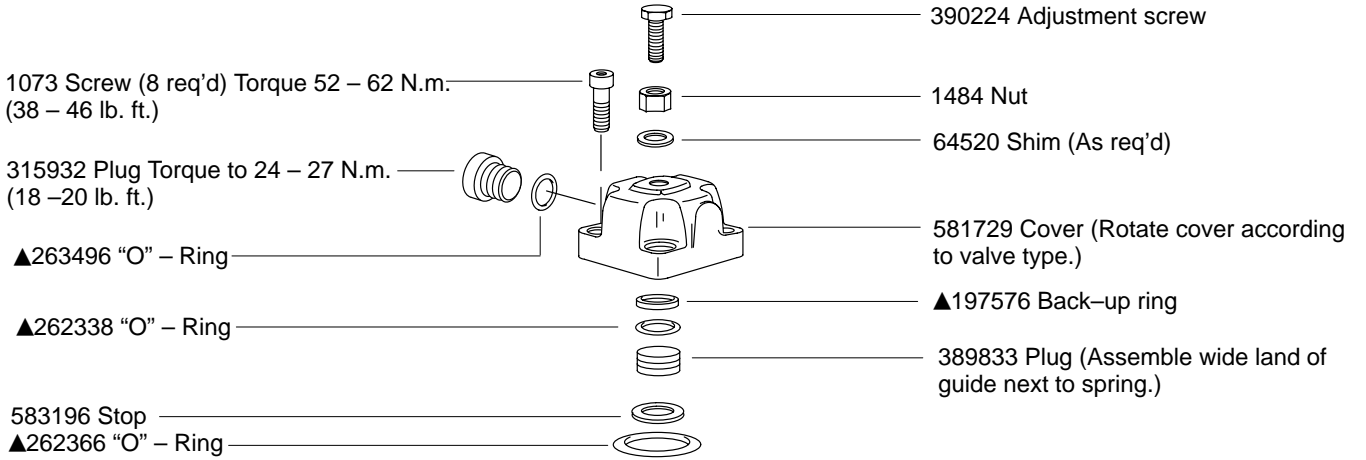


# Pressure Relief

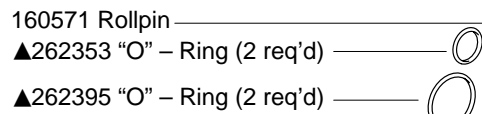


## Pressure Control Valves

### R(C)G-06-\*\*-30 Series

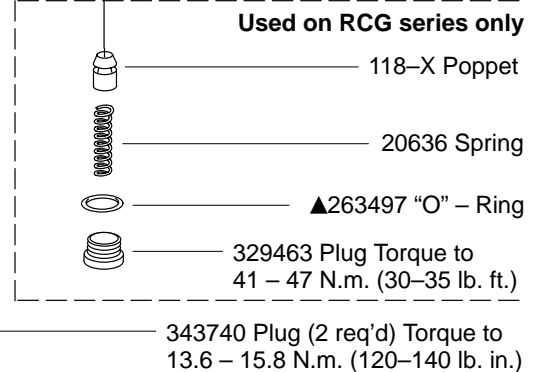
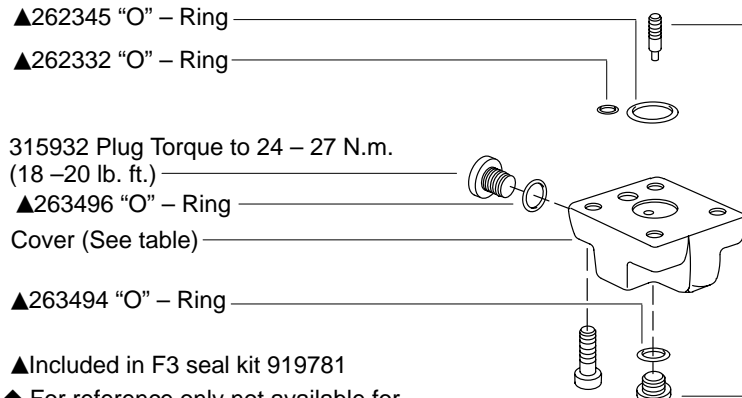
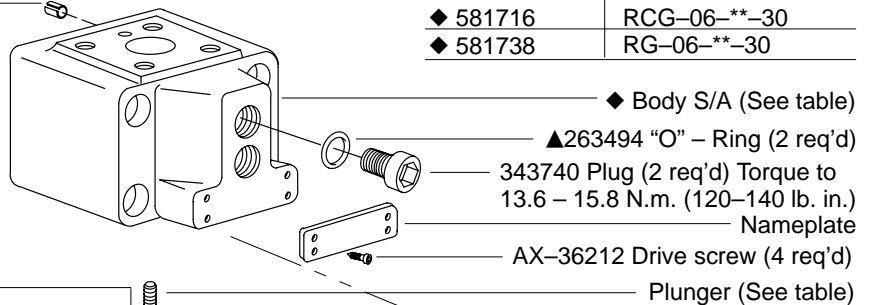


Model	Pressure range	Spool	Spring
R(C)G-**-A	80–250	340305	341612
R(C)G-**-B	125–500		342243
R(C)G-**-D	250–1000		342244
R(C)G-**-F	475–2000		
R(C)G-**-X	10–30	340306	341612
R(C)G-**-Y	30–60		342243
R(C)G-**-Z	60–125		342244



◆ Body S/A	Model
◆ 581716	RCG-06-**-30
◆ 581738	RG-06-**-30

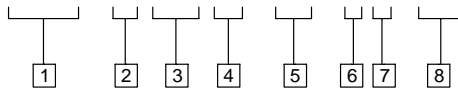
Pressure range	Cover	Plunger
A, B, & D	583190	593888
X, Y, & Z		
F	583189	593889



- ▲ Included in F3 seal kit 919781
- ◆ For reference only not available for sale.

# Model Code

**(F3) - R (C) G - 06 - \* \* - 30**



**1 Special seals**  
(Omit on STD. models.)

**2 Pressure actuated control valve**

**3 Check valve option**  
**C** – With integral check valve  
 (Reverse free flow)  
**Omitted** – Without check valve

**4 Mounting**  
 Manifold or Subplate

**5 Nominal valve size**  
**06** –  $\frac{3}{4}$ ''

**6 Pressure range**  
**A** – 80 – 250 PSI max.  
**B** – 125 – 500 PSI max.  
**D** – 250 – 1000 PSI max.  
**F** – 475 – 2000 PSI max.  
**X** – 10 – 30 PSI max.  
**Y** – 30 – 60 PSI max.  
**Z** – 60 – 125 PSI max.

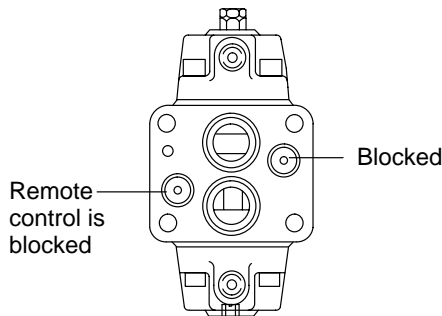
**7 Valve types**  
 (Inset views at bottom of page show cover positions for the (4) valve types.)

**8 Design**

Typical model number  
 RCG-06-D4-30

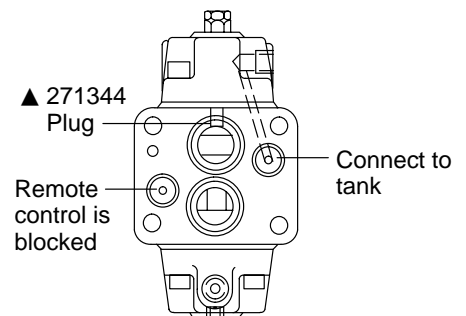
**Note**  
 Assemble covers as shown to  
 obtain valve action desired.

**Type 1**  
 RG series – Back pressure valve.  
 RCG series – Counterbalance valve.  
 Directly controlled internal drain

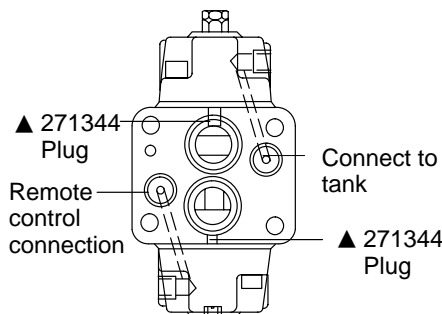


**Note**  
 Assemble covers as shown to  
 obtain valve action desired.

**Type 2**  
 RG or RCG series – Sequence valves.  
 Directly controlled external drain



**Type 3**  
 RG or RCG series – Sequence valves.  
 Remotely controlled external drain



**Type 4**  
 RG series – Unloading valve.  
 RCG series – Counterbalance valve.  
 Remotely controlled internal drain

