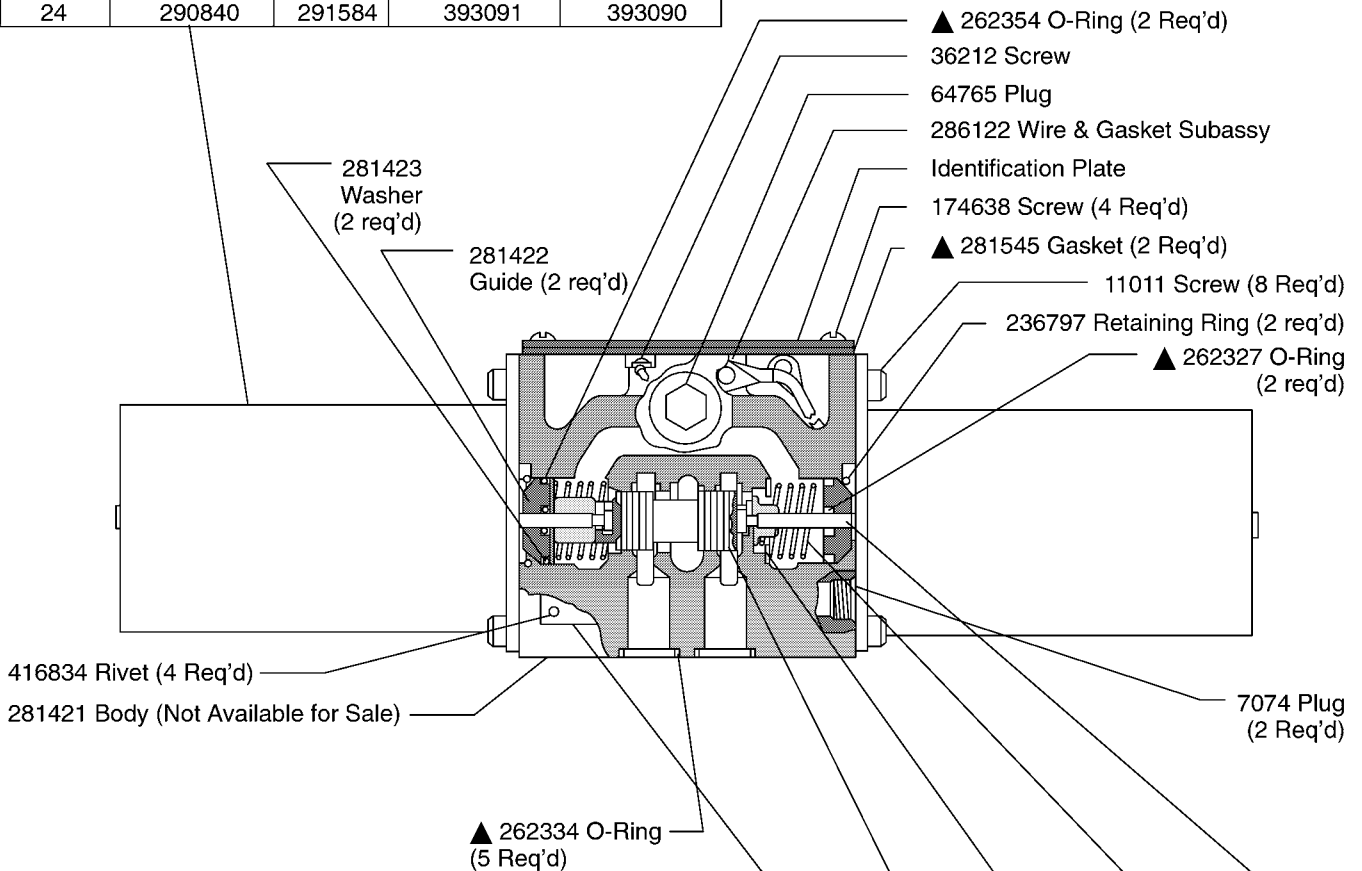




Spring Centered Solenoid Controlled Directional Valves DG4S4-01*C-*DC-50

Voltage DC	Solenoid S/A (2 Req'd)	Coil S/A (2 Req'd)	Solenoid S/A F3 (2 Req'd)	Coil S/A F3 (2 Req'd)
12	290839	291583	751283	751284
24	290840	291584	393091	393090

For additional Solenoid S/A see I-3499-S



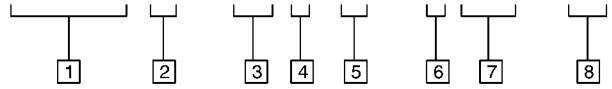
Model	Diagram Plate	Spool	Washer (2 Req'd)	Spring (2 Req'd)	Push Pin (2 Req'd)
DG4S4-010C-*DC-50	290341	213230	211846	290072	213268
DG4S4-012C-*DC-50	290343	213231			
DG4S4-013C-*DC-50	290344	239903			
DG4S4-016C-*DC-50	290345	213232			
DG4S4-017C-*DC-50	290346	236624	283637	217323	290264
DG4S4-018C-*DC-50	290340	235637			
DG4S4-0133C-*DC-50	577484	236615			

▲ Included in F3 Seal Kit 919359



Model Code

DG4S 4 - 01 * C - * DC - 50



1 Model Series

DG4S - Directional valve, subplate or manifold mounted, solenoid operated, sliding spool

3 Series

4 Spool Type

5 Spring Centered

6 Solenoid Voltage

7 DC Solenoid

8 Design

2 Flow Directions

4 - 4 way

Eaton
14615 Lone Oak Road
Eden Prairie, MN 55344
USA
Tel: 952 937-9800
Fax: 952 974-7722
www.hydraulics.eaton.com

Eaton
20 Rosamond Road
Footscray
Victoria 3011
Australia
Tel: (61) 3 9319 8222
Fax: (61) 3 9318 5714

Eaton
46 New Lane, Havant
Hampshire PO9 2NB
England
Tel: (44) 23 92 486 451
Fax: (44) 23 92 487 110