

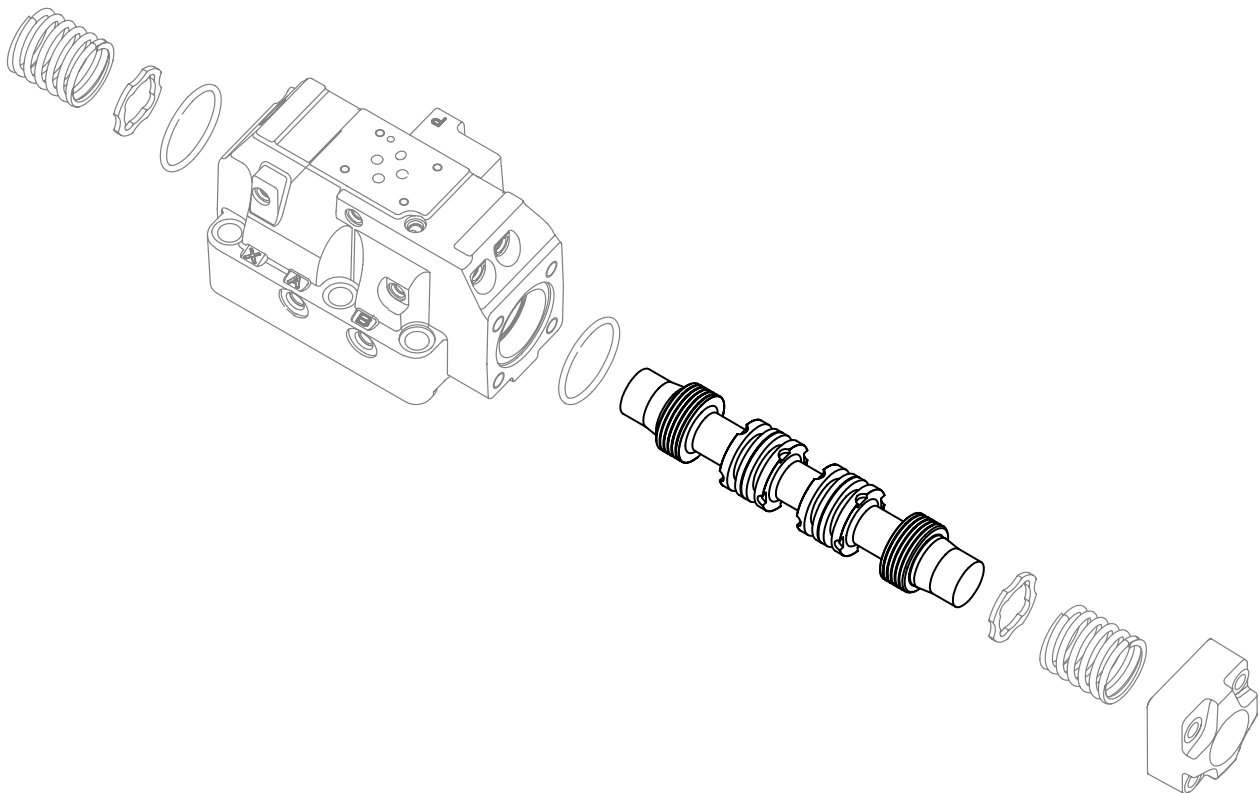
Vickers®

Directional Controls



Directional Valve Spools

Service Parts Information



Contents

D1L-21 Design and Mod-30/31 Designs

Type 0	327931	4
Type 2	327934	4
Type 2	324889	4
Type 6	327932	4

DG4S2/4-01*-50/51 Designs

Type 0	213230	4
Type 1	276278	5
Type 2	289186	5
.....	220344	5

DG4S2-01**W-50/51 Design

Type 0	463385	5
.....	587970	5
Type 0A	572287	5
Type 1	463386	6
Type 2	463387	6
.....	587971	6
Type 2A	463426	6
.....	573396	6
Type 2N	463393	6
Type 3	463388	7
Type 6	463389	7
Type 6A	572288	7
Type 7	463390	7
.....	587973	7
Type 8	463391	8
Type 33	463392	8
.....	587974	8

DG4S4-01*-50/51 Design

Type 2	213231	8
Type 3	239903	8
Type 6/68	213232	9
Type 7	236624	9
Type 8	235637	9
Type 33	236615	9

DG4V4-01-10

Type 0	691401	10
Type 1,11	691404	10
Type 2	691400	10
Type 3, 31	691403	10
Type 6	691402	11
Type 7	691405	11
Type 8	691412	11
Type 22	691411	11
Type 33	691407	11

DG4V3-40 / DG18V-40 Design

Type 0A	989594	12
Type 0N	989598	12
Type 1/11 B/C/F	683314	12
Type 2B/C/F	631611	12
Type 2N	635340	13
Type 3/31 B/C/F	989593	13
Type 6A	989595	13
Type 6/68 B/C/F	631603	13
Type 6/68N	989599	14
Type 7A	989596	14
Type 7/78 B/C/F	989592	14
Type 22A	989649	14
Type 33 B/C/F	635339	14

DG4V-3(S)-60 Design/Soft Shift

Type 0B/C	02-148720	15
Type 2A	892916	15
Type 2B/C	892913	15
Type 3/31/C	927027	15
Type 6B	892914	16
Type 8	02-303660	16
Type 8	893319	16
Type 33C	892915	16

DG4V3-60, DG18V-3-60

Type 0A	617498	16
Type 0B/C	617121	17
Type 1/11	458263	17
Type 2A	617120	17
Type 2B/C/F	617118	17
Type 2N	617126	17
Type 3,31 B/C/F	617124	18
Type 6A	890188	18
Type 6B/C/F	617119	18
Type 6N	617341	18
Type 7A	458151	18
Type 7B	617125	19
Type 8B/C	458950	19
Type 22A	617122	19
Type 33B/C	617123	19

DG3-20/31, MOD-30/31 Design, DG5S4-04-10 60/70 Design

Type 0	250333	20
.....	399891	20
Type 1/11	431972	20
Type 2	250334	20
.....	413482	20
.....	399892	20
Type 3	399893	20
Type 4	413481	21
Type 6	399894	21
Type 8	399896	21
Type 9	413483	21
Type 33	399897	21

DG3V3-40 Design

Type 2C	587127	22
Type 2N	681614	22
Type 6C	587130	22
Type 6N	681615	22

DG3V3-60 Design

Type 0	694435	22
Type 0A	694537	23
Type 2A	698839	23
Type 2N	698842	23
Type 6	694437	23

DG3S4, DG5S4-60/70 Design, DG19S4-50/-51 Design, DG5S8-10/30/40 Design

Type 0	363495	23
Type 1/11	276623	24
	276624	24
	431972	24
Type 2	363496	24
Type 3/31	276625	24
Type 4	276626	25
Type 6	363498	25
Type 8	363499	25
Type 9	363500	25
Type 33	363501	25

DG5S-H8 (High Flow) -20 Design 4-way Valve

Type 0	273677	26
Type 2	273676	26
Type 3	275803	26
Type 4	273720	26
Type 6	275804	27
Type 8	275805	27
Type 9	275806	27
Type 33	317777	27

DG3S4, DG5S & DG19S4-50/ -51/ -90/ - 100/ Design & DG5S8-10 Design 4-way Valves

Type 0	364037	28
Type 1	331404	28
Type 2	277478	28
	364038	28
Type 3	277479	28
Type 4	281193	29
Type 6	364039	29
Type 8	281194	29
Type 9	277563	29
Type 33	364042	29

DG5S4-10 60/70 Design

Type 0	399891	30
Type 1/11	431972	30
Type 2	399892	30
Type 4	413481	30
Type 6	399894	30
Type 8	399896	31
Type 9	413483	31
Type 33	399897	31

DG3S, DG5S-H8 (High Flow) 4-way Valve 20/60/70 Design

Type 0	786350	31
Type 1/11	786557	32
Type 2	786349	32
Type 3/31	786558	32
Type 4	628162	32
Type 6	786559	33
Type 8	627221	33
Type 9	786561	33
Type 33	786562	33

DG17/20V-3-40

Type 0C/N	683222	34
	683219	34
Type 2C/N	683223	34
	989729	34
Type 6C/N	683224	34
	989730	34
Type 7N	683220	34
Type 33C/N	683225	34
	683221	34

DG17V-3-60

Type 0	893025	35
Type 2C	893026	35
Type 6C	893027	35
Type 8	893029	35
Type 22A	893035	35
Type 33C	893030	36

DG20V-3-60

Type 2	916622	36
Type 6	916623	36

DG17S4-06-50 & DG17S-8--10 Design 4-way Valves**

Type 0	281922	36
Type 2	281924	37
Type 4	281926	37
Type 6	281927	37
Type 8	281929	37

DG17S4-53/ -100 Design 4-way Valves

Type 0	282281	37
Type 2	282287	38
Type 4	282286	38
Type 6	282283	38
Type 8	282339	38
Type 33	282285	38

DG3V8, DG5V8-10 Design, DG2S

Type 0	02-324575	39
Type 2	02-324577	39
Type 4	02-324579	39
Type 6	02-324580	39
Type 8	02-324582	39
Type 9	02-324583	40
Type 33	02-324584	40

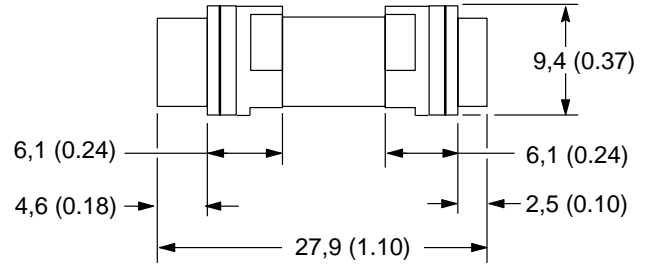
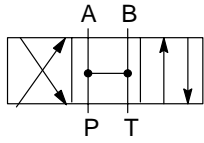
DG3V10, DG5V10-10 Design

Type 2	02-317237	40
Type 3/31	02-317227	40
Type 4	02-317231	41
Type 6	02-317238	41
Type 8	02-317233	41
Type 33	02-317234	41

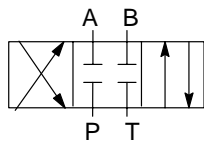
D1L-21 DESIGN and MOD-30/31 DESIGNS

mm (inch)

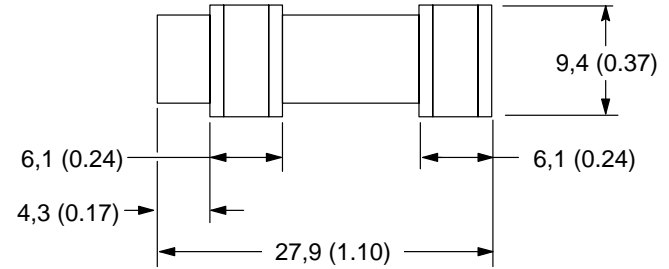
**Type 0 Spring Centered/Detent
Open Center
P/N 327931**



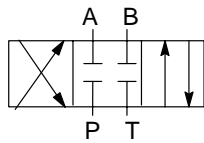
**Type 2 Spring Offset
Closed Center
P/N 327934**



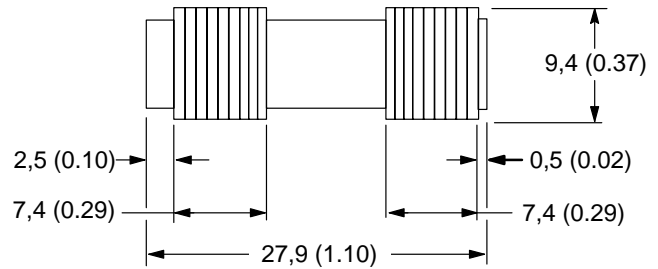
Note
This spool used in pilot stage of MOD-04*A and DG5S4-04*A



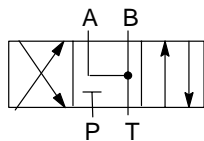
**Type 2 Spring Centered/Detent
Closed Center
P/N 324889**



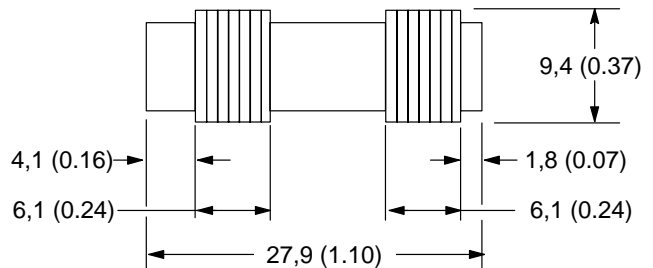
Note
This spool used in pilot stage of MOD-04* (No Spring) and MOD-04*N (Detent)



**Type 6 Spring Centered
A & B to Tank, P Closed
P/N 327932**

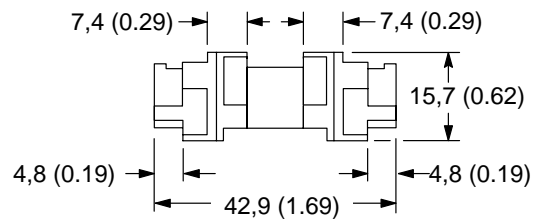
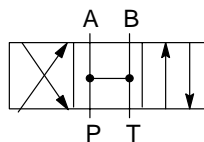


Note
This spool used in pilot stage of MOD-04*C and DG5S4-04*C



DG4S2/4-01*-50/51 DESIGNS

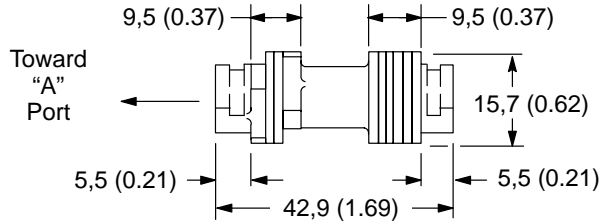
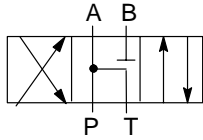
**Type 0 Spring Centered/Offset for 50 Design
Detented for 51 Design
Open Center
P/N 213230**



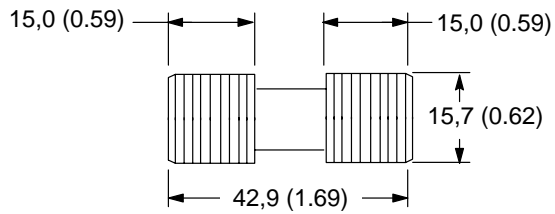
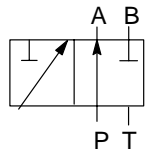
DG4S2/4-01*-50/51 DESIGN

mm (inch)

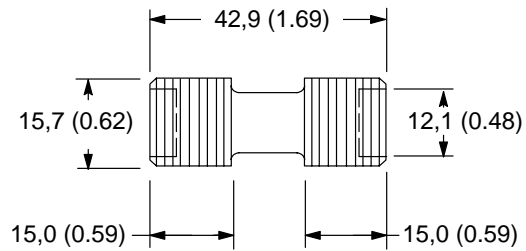
Type 1 Spring Centered for 50 Design
P&A to Tank, B Blocked
(Relieved Land Toward 'A' Port)
P/N 276278



Type 2 Spring Centered/Detent
51 Design
P/N 289186

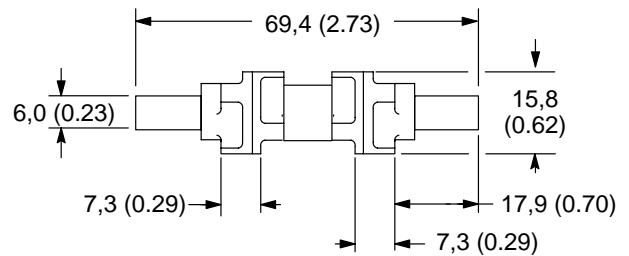
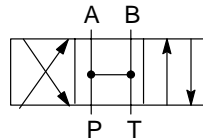


Spring Offset 50 Design
P/N 220344

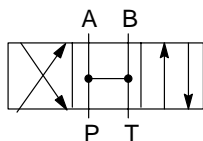


DG4S2-01W-50/51 DESIGNS**

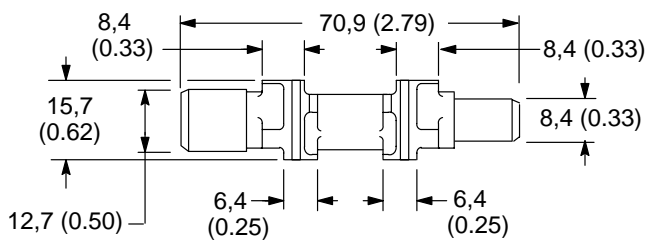
Type 0 Spring Centered for 50 Design
Detented for 51 Design
Open Center
P/N 463385 Spring Centered
P/N 587970 Detent (End Polished)



Type 0A Spring Offset 50 Design
Open Center
P/N 572287



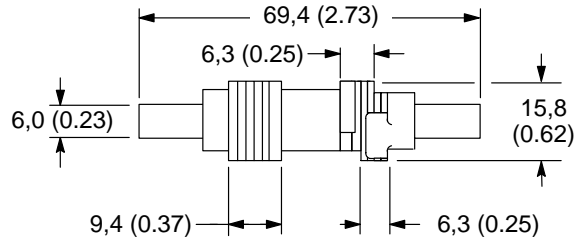
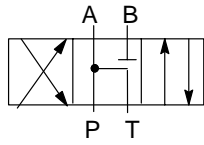
Toward
 "A"
 Port



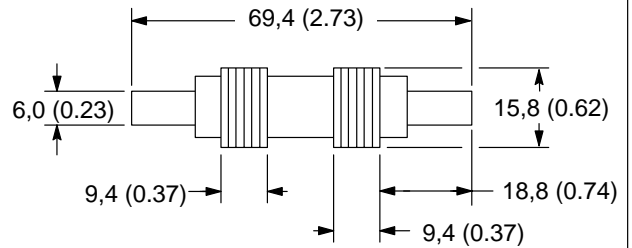
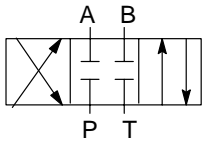
DG4S2-01**W-50/51 DESIGN

mm (inch)

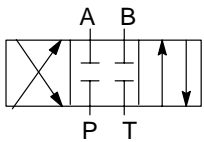
Type 1 Spring Centered 50 Design
Open Center, P Open to A & Tank, B Blocked
P/N 463386



Type 2 Spring Centered for 50 Design
Detented for 51 Design
Closed Center
P/N 463387 Spring Centered
P/N 587971 Detent (End Polished)

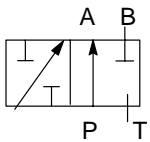
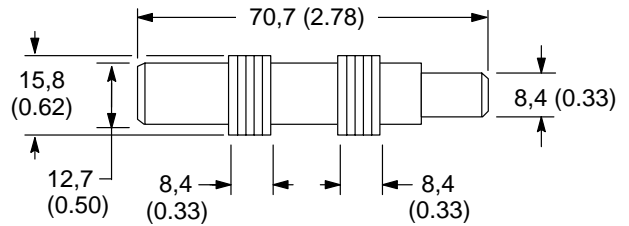


Type 2A Spring Offset 50 Design
Closed Center



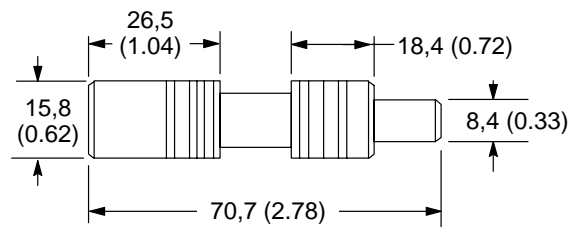
P/N 463426

Toward
 "A"
 Port ←

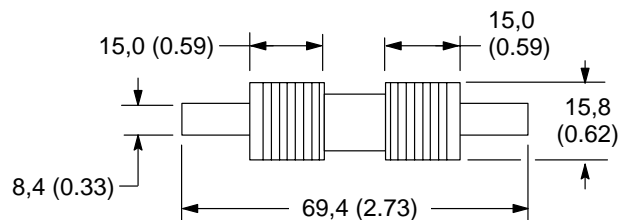
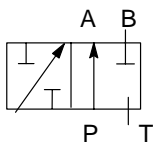


P/N 573396

Toward
 "A"
 Port ←



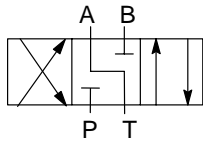
Type 2N Detent For 51 Design
P/N 463393



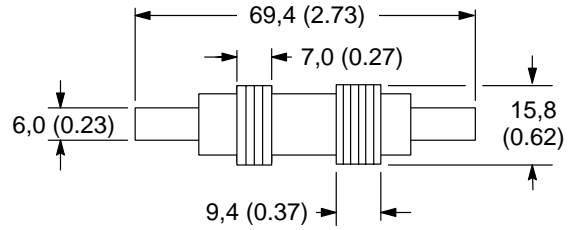
DG4S2-01**W-50/-51 DESIGNS

mm (inch)

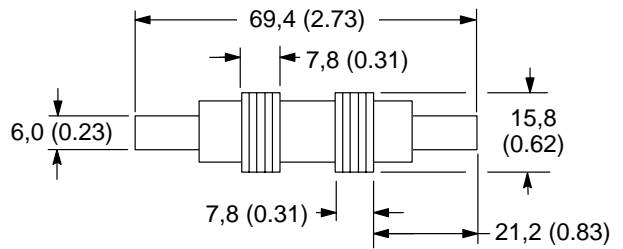
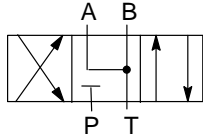
Type 3 Spring Centered 50 Design
A Open to Tank, P & B Blocked
P/N 463388



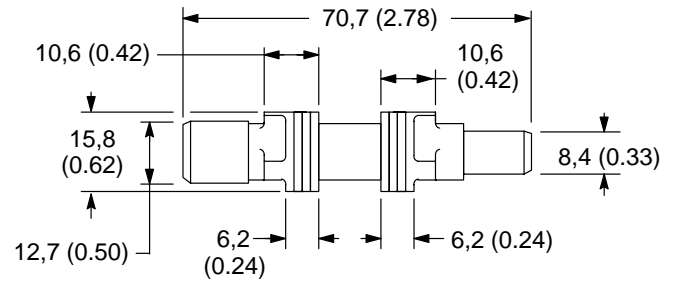
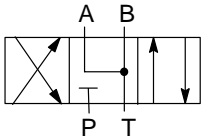
Toward
 "A"
 Port ←



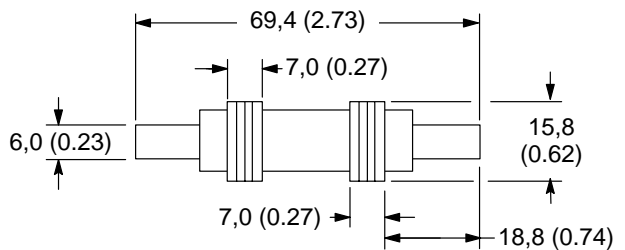
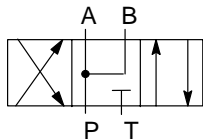
Type 6 Spring Centered for 50 Design
A & B Open to Tank, P Blocked
P/N 463389 Spring Centered



Type 6A Spring Offset 50 Design
A & B Open to Tank, P Blocked
P/N 572288



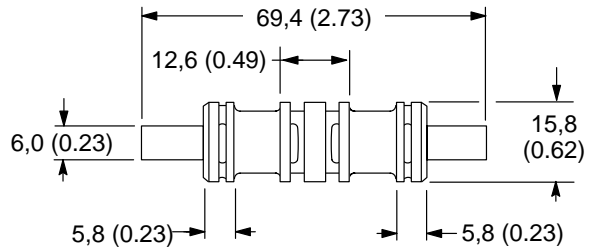
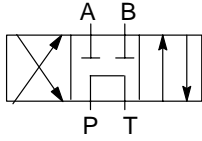
Type 7 Spring Centered for 50 Design
Detented for 51 Design
P Open to A & B, Tank Blocked
P/N 463390 Spring Centered
P/N 587973 Detent (End Polished)



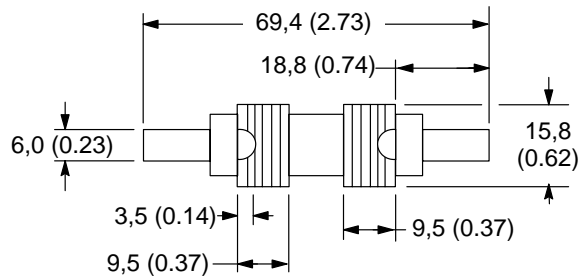
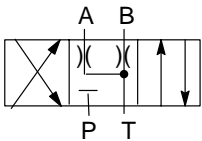
DG4S2-01W-50/-51 DESIGNS**

mm (inch)

Type 8 Spring Centered 50 Design
Tandem Open Center, Crossover P to Tank,
A & B Blocked
P/N 463391

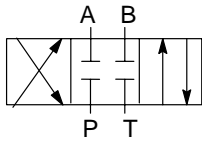


Type 33 Spring Centered for 50 Design
Detented for 51 Design
Controlled Leakage From A & B to Tank, P Blocked
P/N 463392 Spring Centered
P/N 587974 Detent (End Polished)

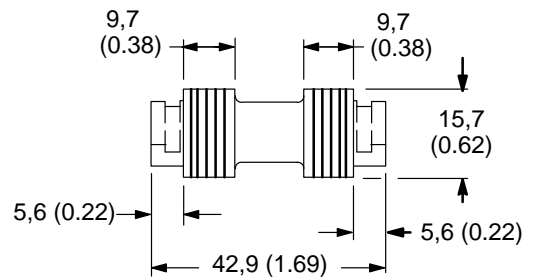


DG4S4-01*-50/-51 DESIGNS

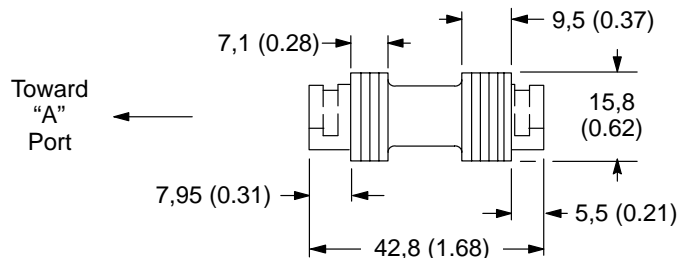
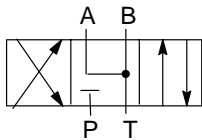
Type 2 Spring Centered/Offset for 50 Design
Detented for 51 Design
Closed Center
P/N 213231



Note
 This spool used in pilot stage of
 DG/DF5S4-**A*-50/-51 & DG/
 DF5S4-**N* & DG5S-8-*N*-10



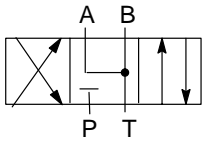
Type 3 Spring Centered For 50 Design
P & B Blocked, A to Tank
(Narrow Land Toward 'A' Port)
P/N 239903



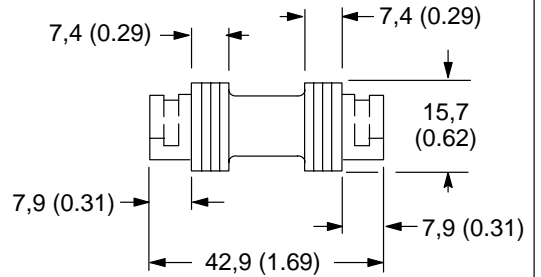
DG4S4-01*-50/-51 DESIGNS

mm (inch)

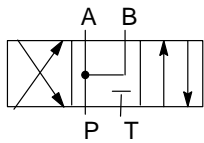
**Type 6 Spring Centered/Offset for 50 Design
Detented for 51 Design
Type 68 Spring Centered with 4 or 8 Type Main Stage Spools
A & B to Tank, P Blocked
P/N 213232**



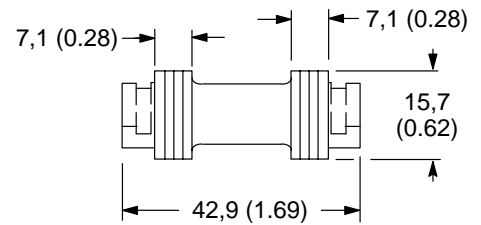
Note
This spool used in pilot stage of
DG/DF5S4-**C*-50/-51/-53 &
DG5S-8-H8-10



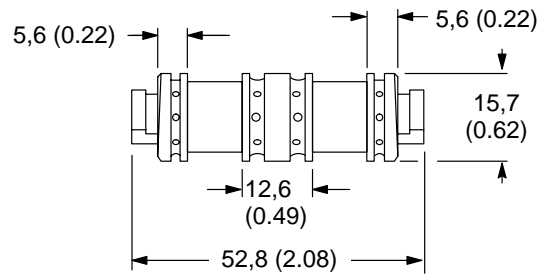
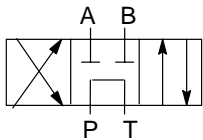
**Type 7 Spring Centered for 50 Design
Detented for 51 Design
A & B to P, Tank Blocked
P/N 236624**



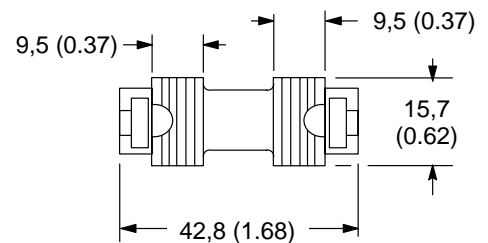
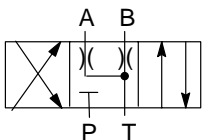
Note
This spool used in pilot stage of
DG5S4-**D*-50/-51



**Type 8 Spring Centered for 50 Design
Tandem with Open Center Crossover
P/N 235637**



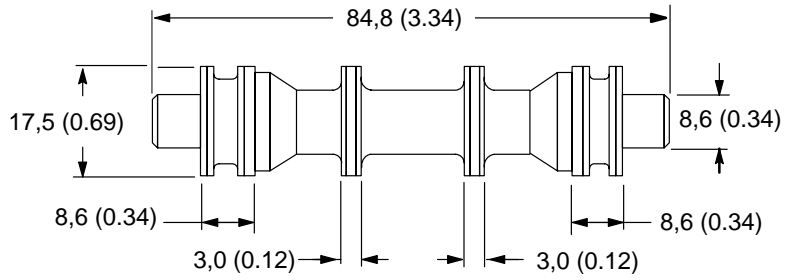
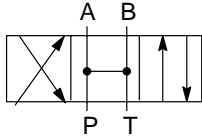
**Type 33 Spring Centered for 50 Design
Detented for 51 Design
Controlled Leakage From A & B to Tank, P Blocked
P/N 236615**



DG4V4-01 -10 DESIGN

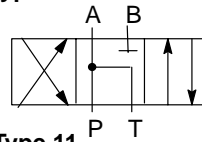
mm (inch)

Type 0A/B/C/N
Open Center
P/N 691401

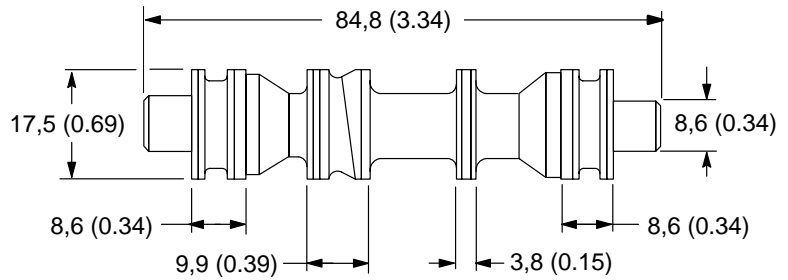


Type 1, 11
Open Center, P to A & Tank, B Blocked/
P to B & Tank, A Blocked
P/N 691404

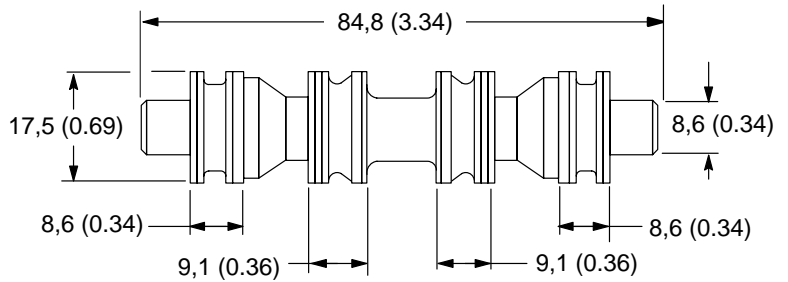
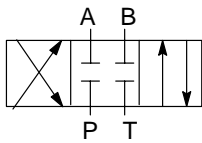
Type 1



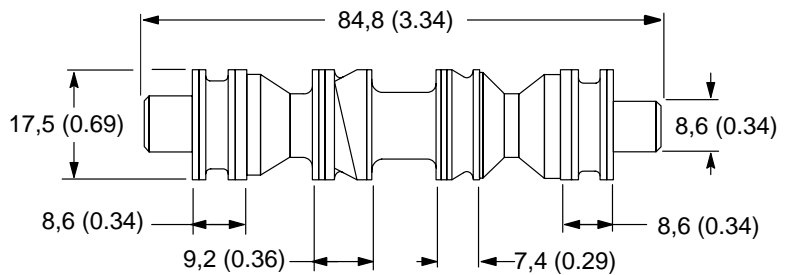
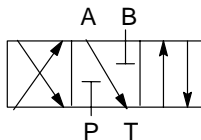
Type 11



Type 2A/B/C/N
Closed Center, All Ports
P/N 691400



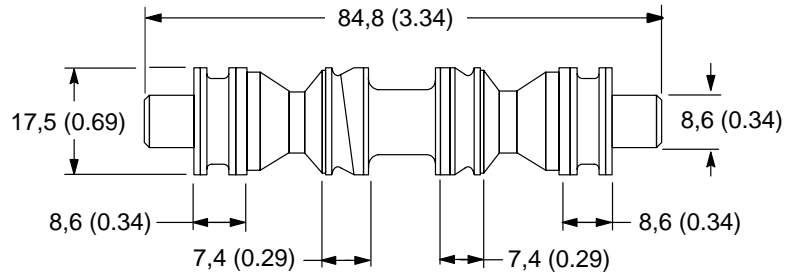
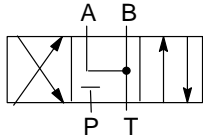
Type 3, 31
Open Center, P and B Blocked, A to Tank/
Closed Center, P & A Blocked, B to Tank
P/N 691403



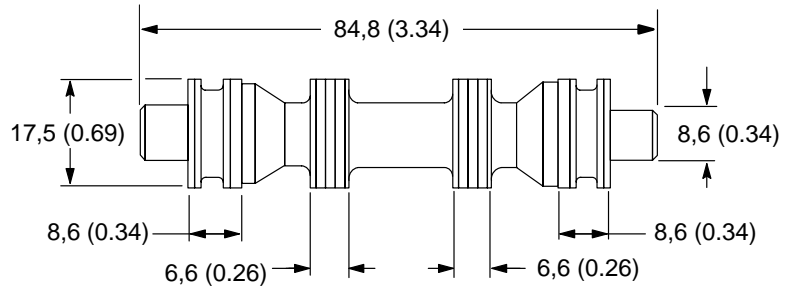
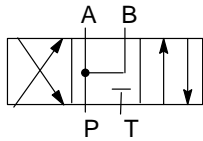
DG4V4-01 -10 DESIGN

mm (inch)

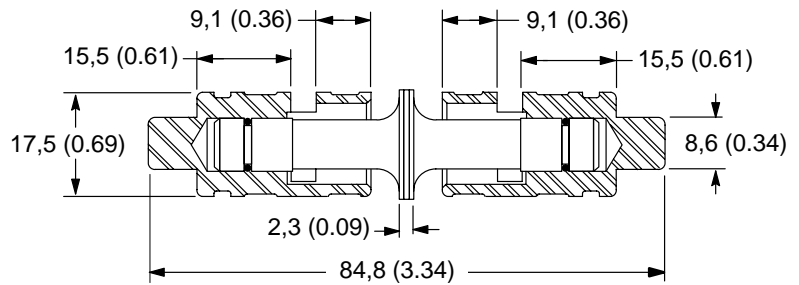
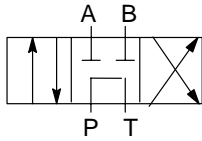
Type 6
Closed Center, A & B to Tank,
P Blocked
P/N 691402



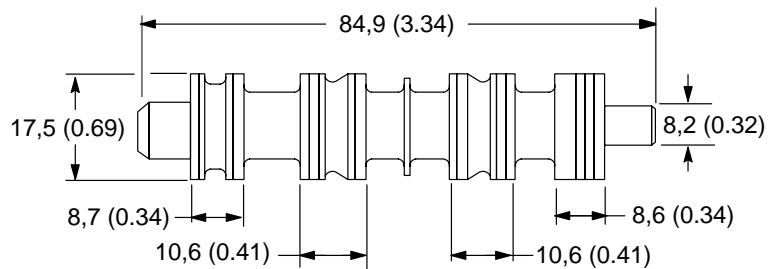
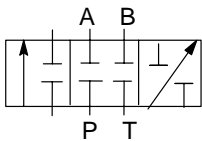
Type 7
Open Center, P to A & B, Tank Blocked
P/N 691405



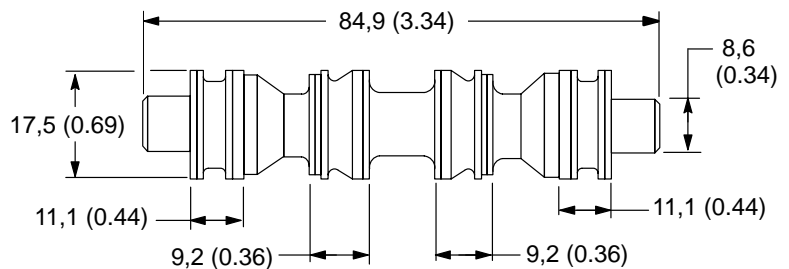
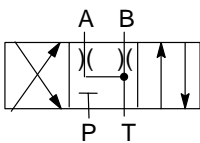
Type 8
Tandem Center, P to Tank, Open Crossover
P/N 691412



Type 22
Closed Center, Two-Way
P/N 691411



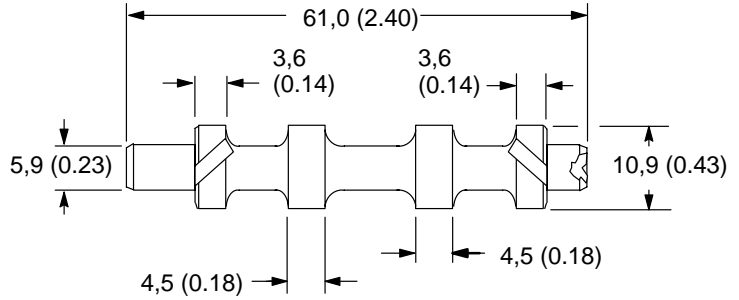
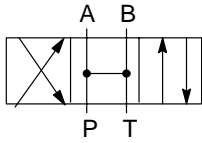
Type 33
Closed Center, Bleed A & B to Tank
P/N 691407



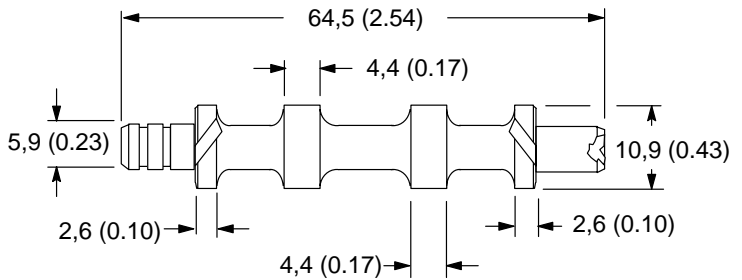
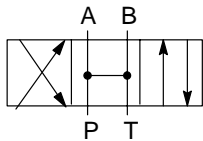
DG4V3-40/DG18V-40 DESIGN

mm (inch)

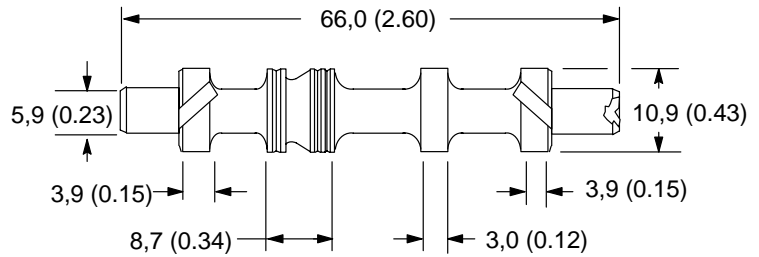
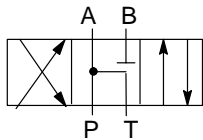
**Type 0A Spring Offset
Open Center
P/N 989594**



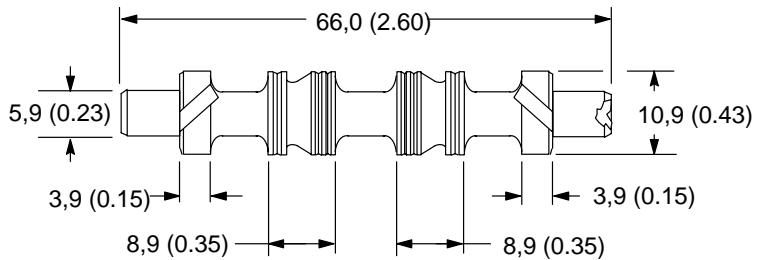
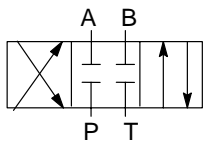
**Type 0N Detent
Open Center
P/N 989598**



**Type 1/11 B/C/F Spring Centered
P to A&Tank, B Blocked
P/N 683314**



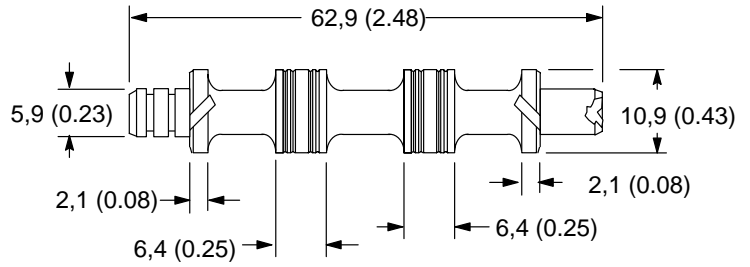
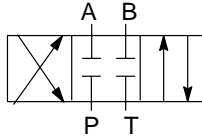
**Type 2B/C/F Spring Centered
Closed Center
631611**



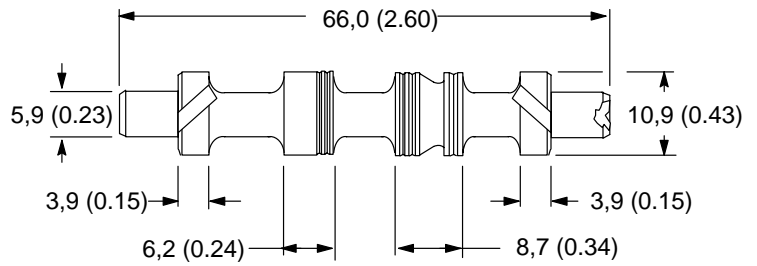
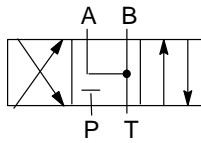
DG4V3-40/DG18V-40 DESIGN

mm (inch)

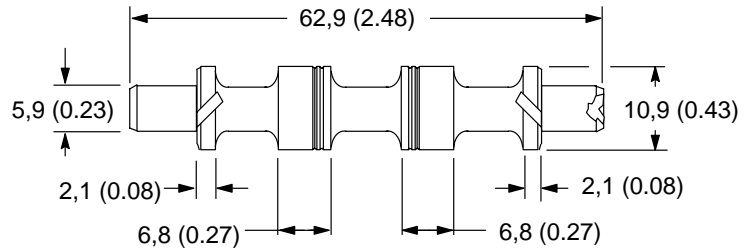
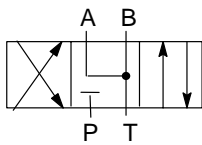
**Type 2N Detent
Closed Center
635340**



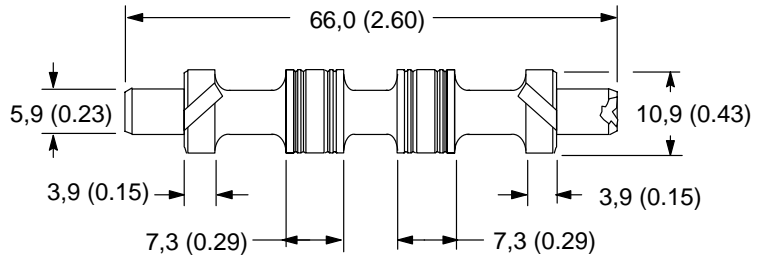
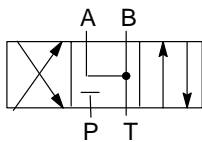
**Type 3/31 B/C/F Spring Centered
P&B Blocked, A to Tank
989593**



**Type 6A Spring Offset
A & B to Tank, P Blocked
P/N 989595**



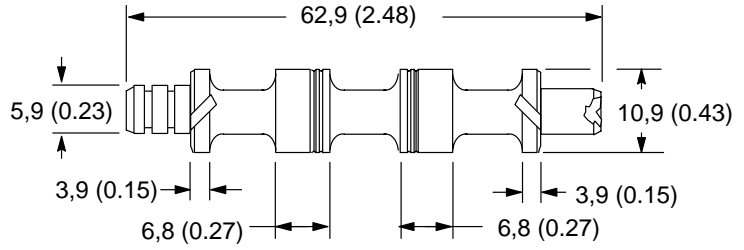
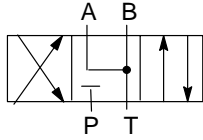
**Type 6/68 B/C/F Spring Centered
A & B to Tank, P Blocked
P/N 631603**



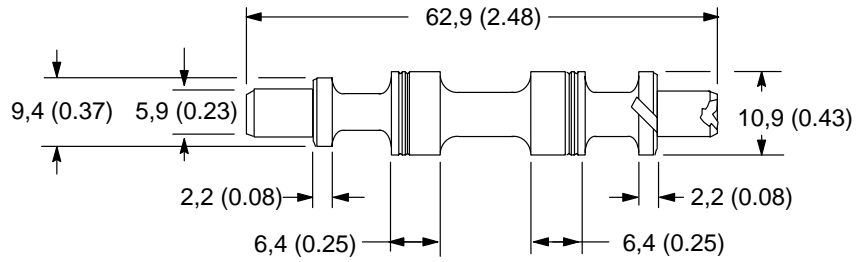
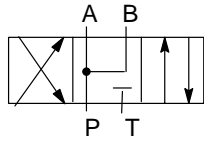
DG4V3-40/DG18V-40 DESIGN

mm (inch)

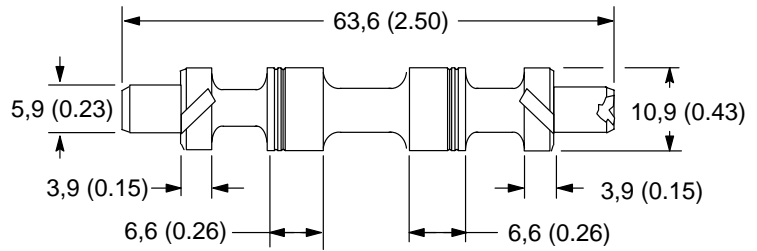
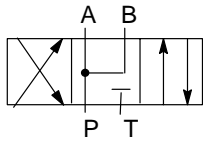
Type 6/68N Detent
A & B to Tank, P Blocked
P/N 989599



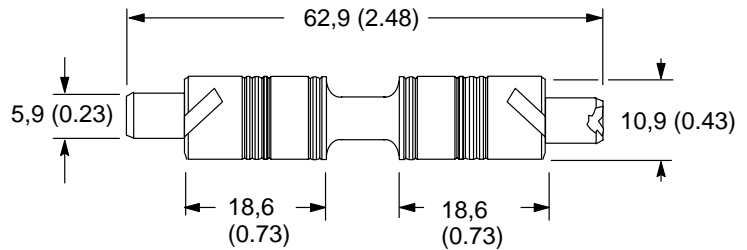
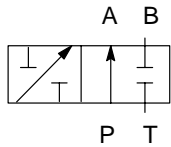
Type 7A Spring Offset
P to A & B, Tank Blocked
989596



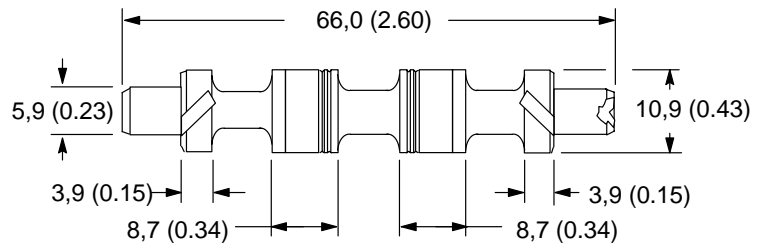
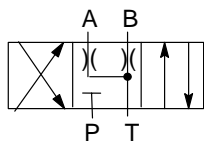
Type 7/78 B/C/F Spring Centered
P to A & B, Tank Blocked
P/N 989592



Type 22A Spring Offset
P Open to A, B & T Blocked
P/N 989649



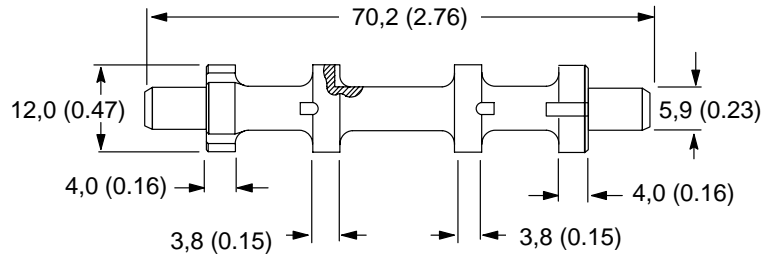
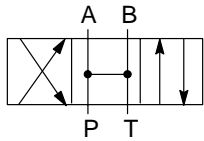
Type 33 B/C/F Spring Centered
Controlled Leakage from A & B to Tank,
P Blocked
P/N 635339



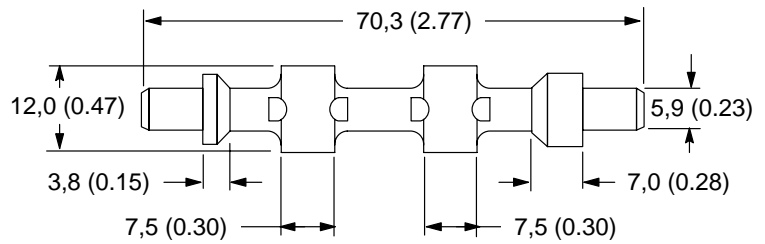
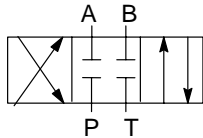
DG4V-3(S) -60 DESIGN

mm (inch)

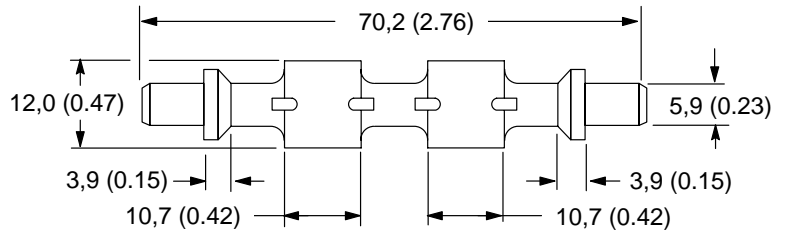
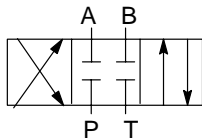
**Type 0B/C Spring Centered
Open Center
P/N 02-148720**



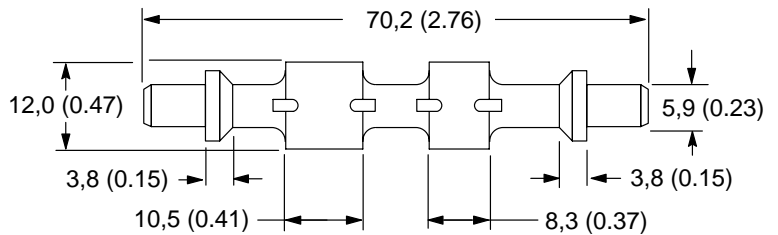
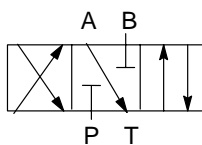
**Type 2A Spring Offset
Closed Center
P/N 892916**



**Type 2C
Closed Center
P/N 892913**



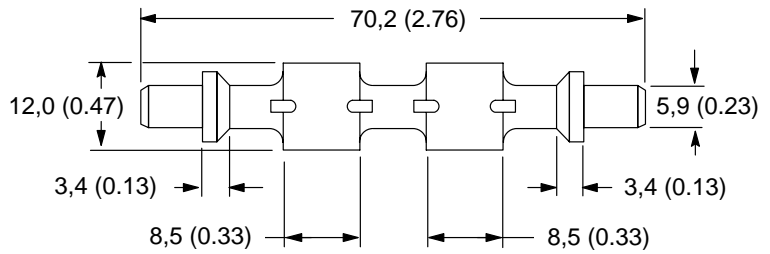
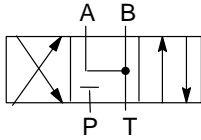
**Type 3/31C
Center Condition - Closed
P/N 927027**



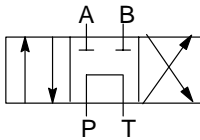
DG4V-3(S) -60/61 DESIGNS

mm (inch)

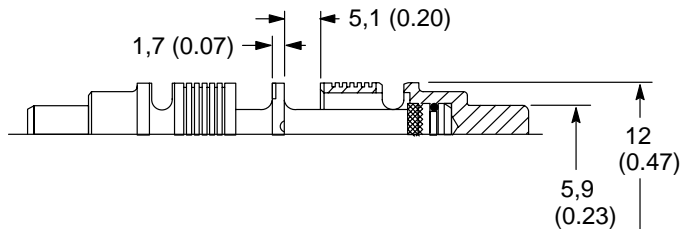
**Type 6C Spring Centered
Closed Center, A & B to Tank,
P Closed
P/N 892914**



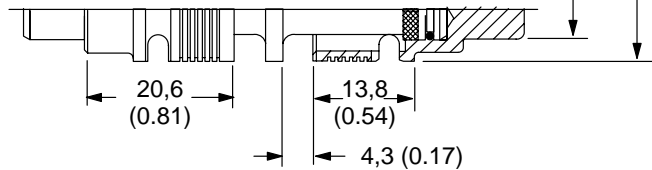
**Type 8 Spring Centered for 61 Design
Tandem Open Center, Crossover P to Tank,
A & B Blocked**



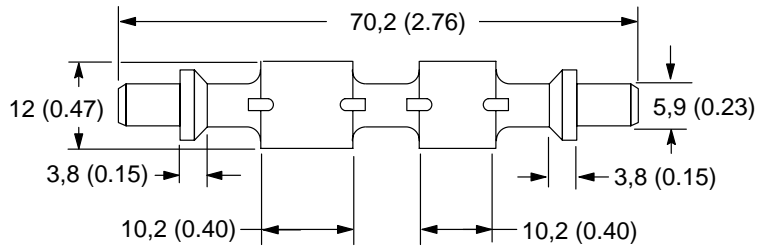
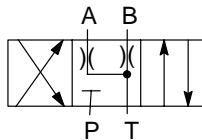
P/N 02-303660



P/N 893319

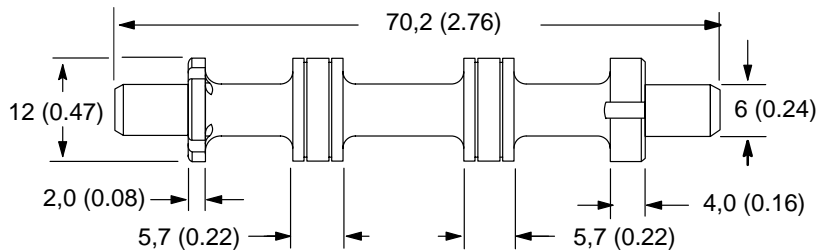
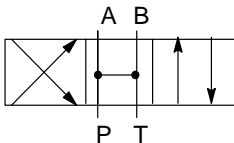


**Type 33B/C Spring Centered
Bleed Center, A & B to Tank, P Closed
P/N 892915**



DG4V3-60/DG18V3-60 DESIGN

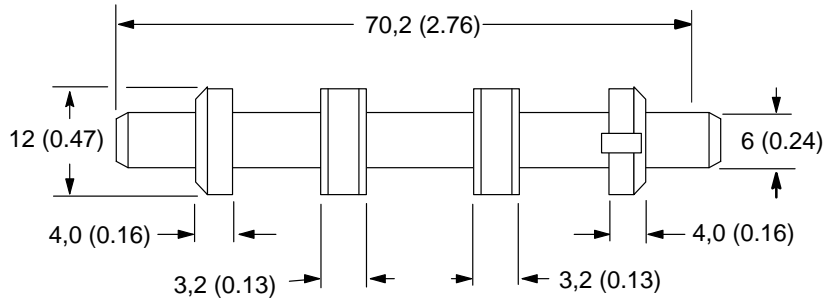
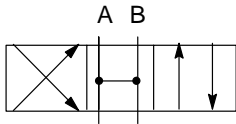
**Type 0A
Open Center
P/N 617498**



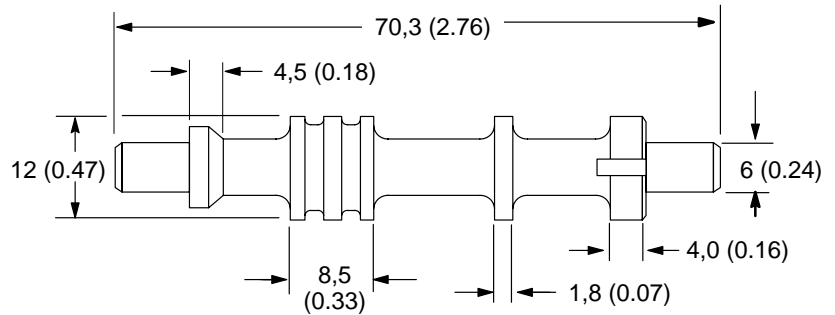
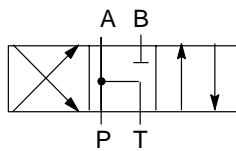
DG4V3-60/DG18V3-60 DESIGN

mm (inch)

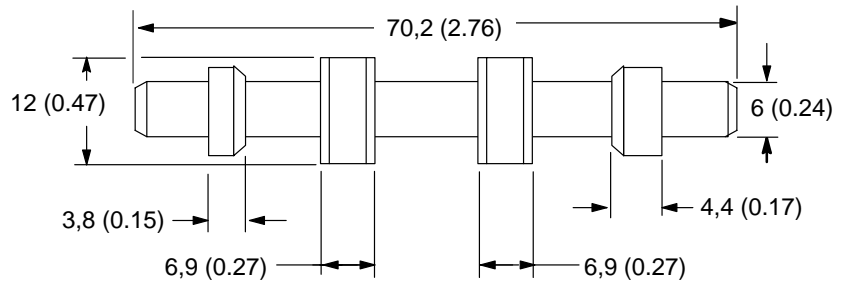
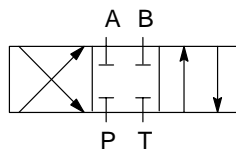
Type 0B/C
Open Center
P/N 617121



Type 1,11
Open Center, P&A to Tank, B Blocked
P/N 458263

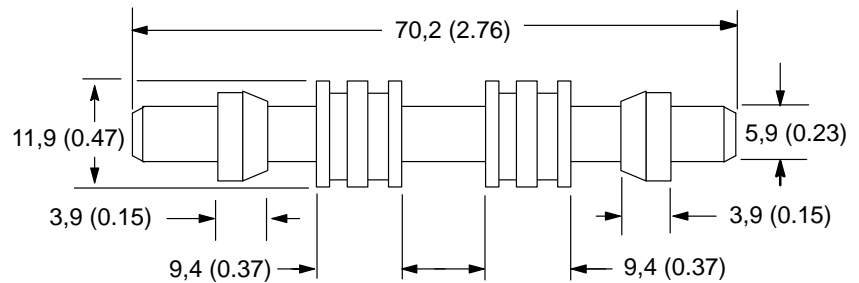
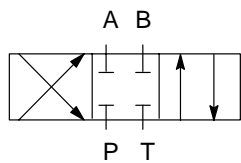


Type 2A
Closed Center
P/N 617120

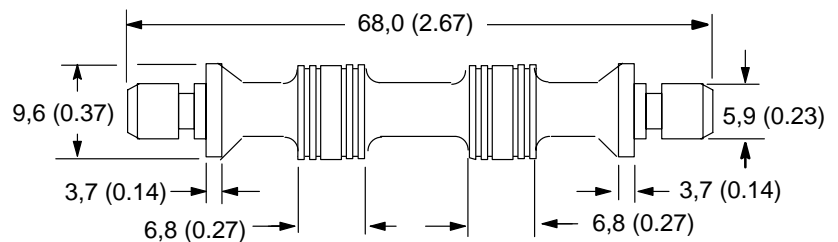
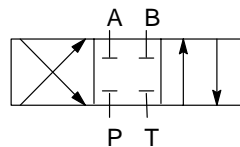


DG4V3-60/DG18V3-60 DESIGN

Type 2B/C/F
Closed Center
P/N 617118



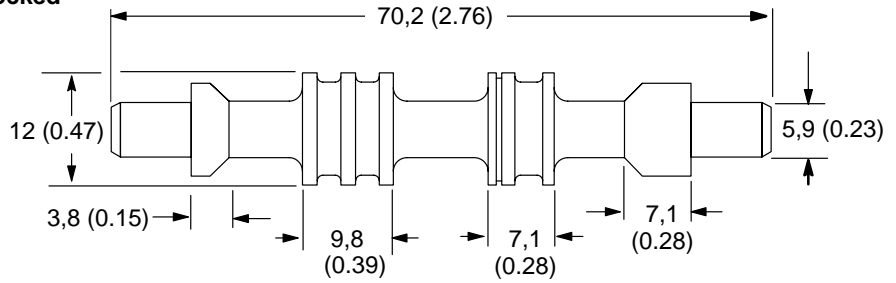
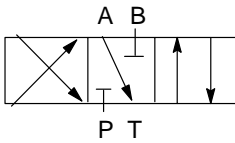
Type 2N
Open Center
P/N 617126



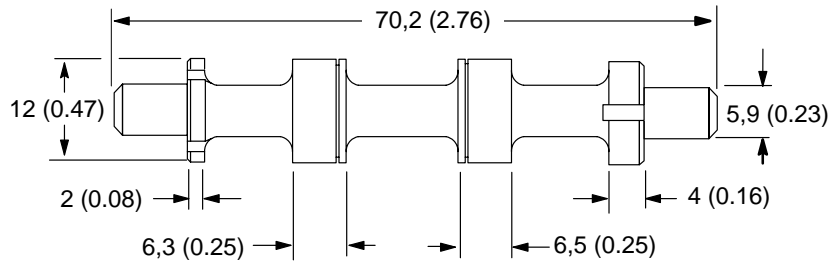
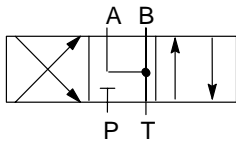
DG4V3-60/DG18V3-60 DESIGN

mm (inch)

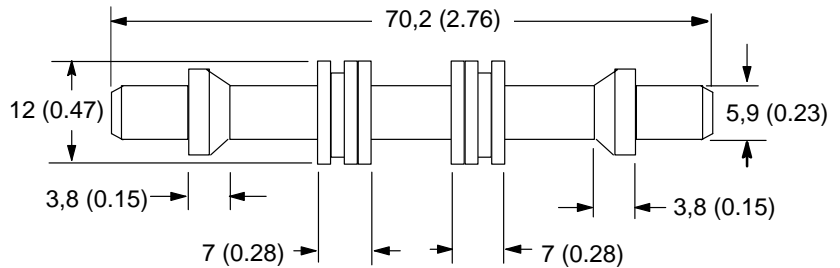
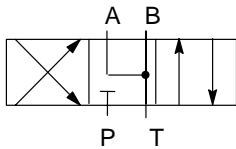
Type 3/31B/C/F
Closed Center, A to Tank, P & B Blocked
P/N 617124



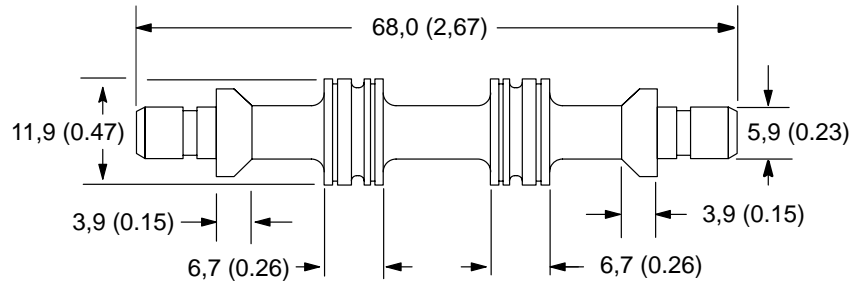
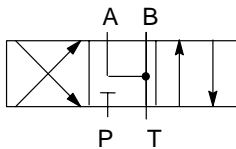
Type 6A
Closed Center with Crossover
P/N 890188



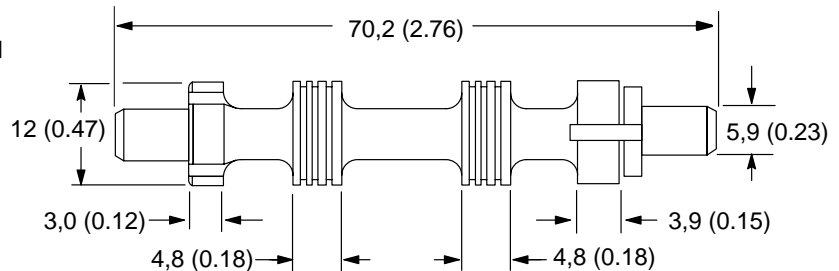
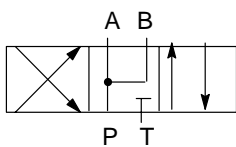
Type 6B/C/F
Closed Center, P Only
P/N 617119



Type 6N
Closed Center, P Only
P/N 617341



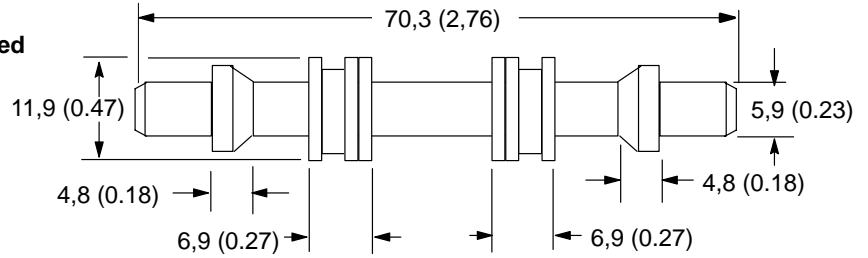
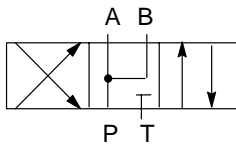
Type 7A
Open Center, P to A & B, Tank Blocked
P/N 458151



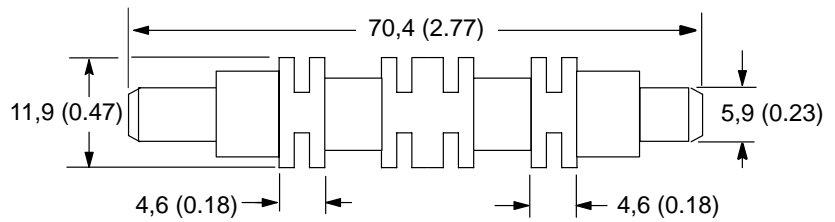
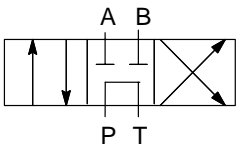
DG4V3-60/DG18V3-60 DESIGN

mm (inch)

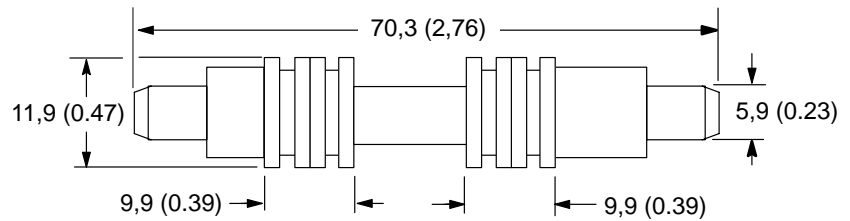
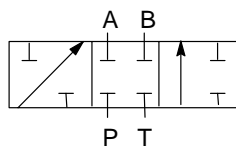
Type 7B
Open Center, P to A & B, Tank Blocked
P/N 617125



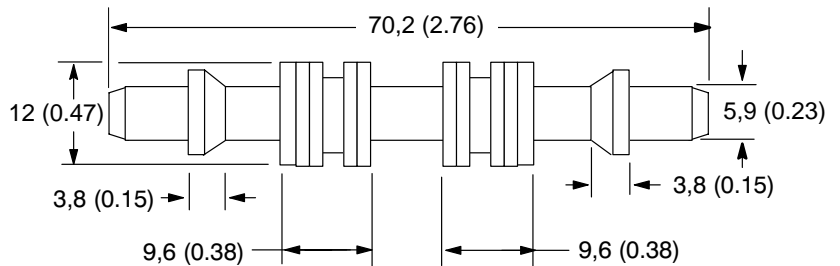
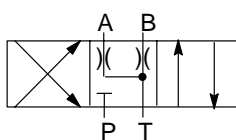
Type 8B/C
Tandem Center, P to Tank
P/N 458950



Type 22A
Closed Center, Two-Way
P/N 617122

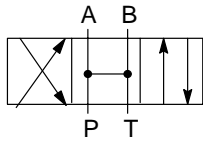


Type 33B/C
Closed Center, (Bleed A & B)
P/N 617123

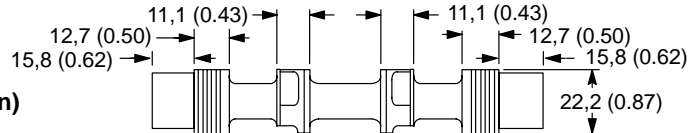


DG3 -20/-31, MOD -30/-31 DESIGNS

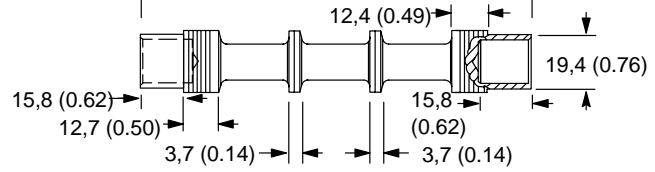
**Type 0
Open Center**



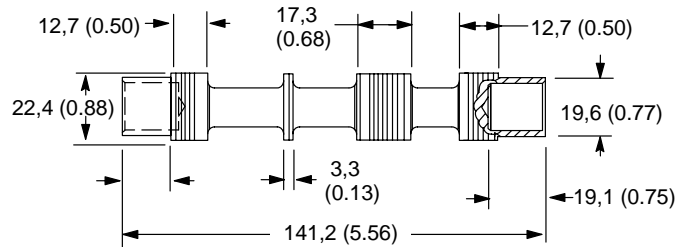
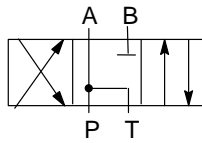
P/N 250333 (-20 & -30 Design)



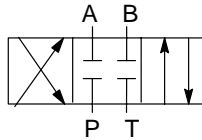
P/N 399891 (-31 Design)



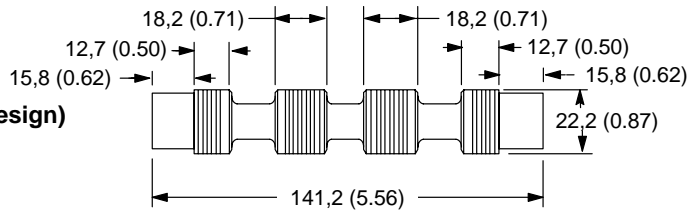
**Type 1/11
P&A to Tank, B Blocked
P/N 431972**



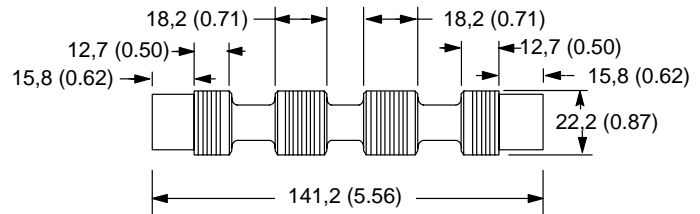
**Type 2
Closed Center**



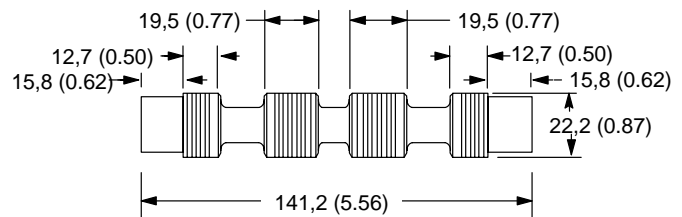
**P/N 250334 (-20 & -30 Design)
Spring Centered/Offset**



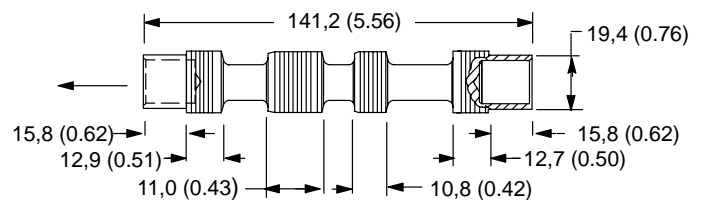
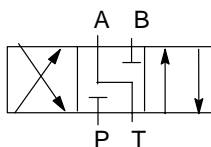
**P/N 413482(-31 Design)
Spring Offset**



**P/N 399892 (-31 Design)
Spring Centered**



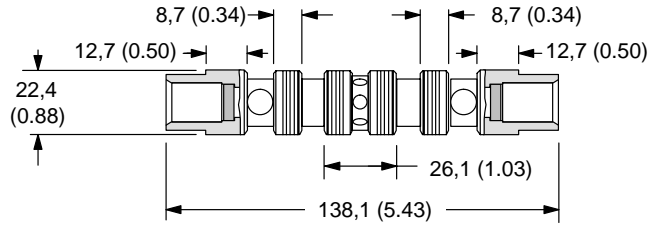
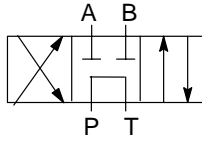
**Type 3
A Open to Tank, P&B Blocked
P/N 388893**



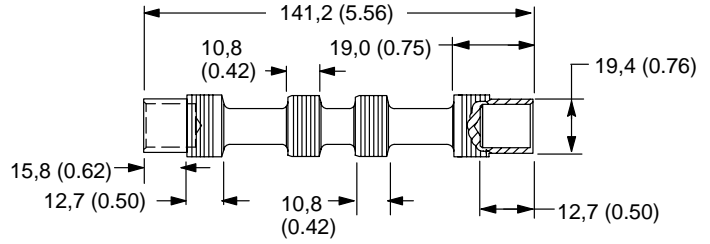
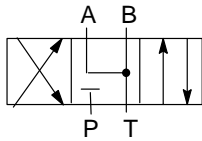
DG3-20/-31, MOD-30/-31 DESIGNS, DG5S4-04-10 60/70 DESIGNS

mm (inch)

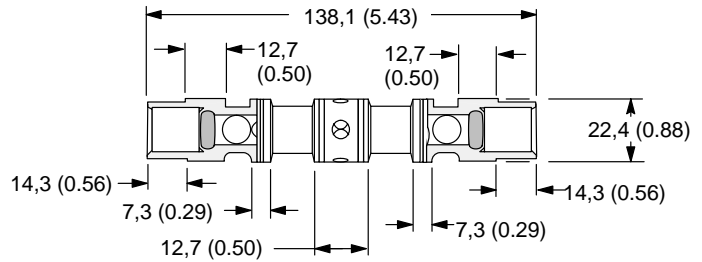
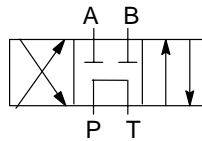
Type 4
Tandem with Closed Center Crossover
P/N 413481



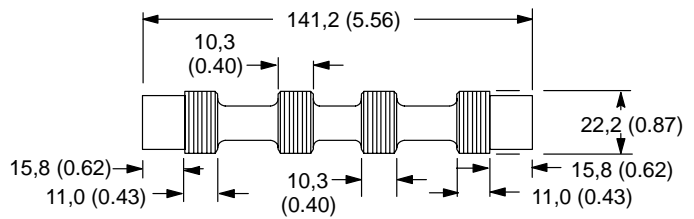
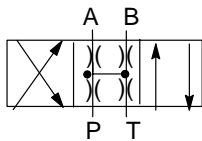
Type 6
A&B to Tank, P Blocked
P/N 399894



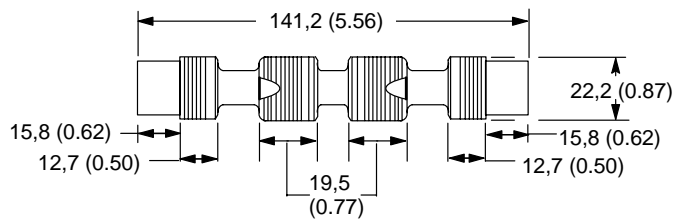
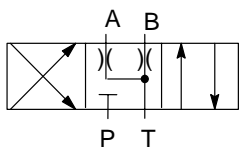
Type 8
Tandem with Open Center Crossover
P/N 399896



Type 9
Open over Tapers
P/N 413483



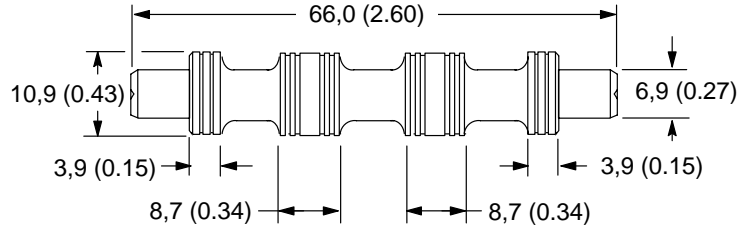
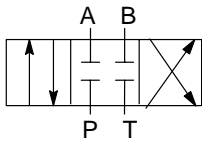
Type 33
Controlled Leakage from
A&B to Tank, P Blocked
P/N 399897



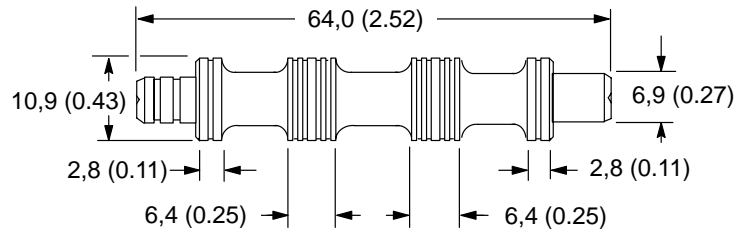
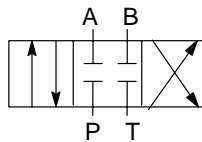
DG3V3 -40 DESIGN

mm (inch)

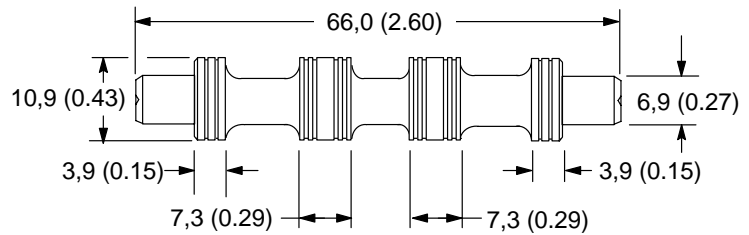
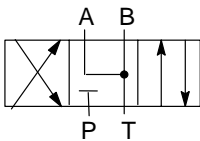
**Type 2C Spring Centered
Closed Center
P/N 587127**



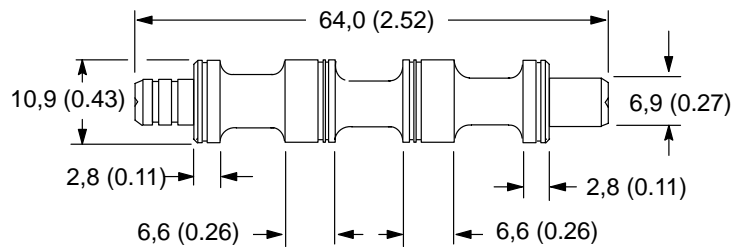
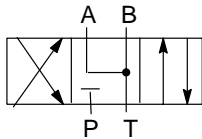
**Type 2N Detent
Closed Center
P/N 681614**



**Type 6C Spring Centered
A&B to Tank, P Blocked
P/N 587130**

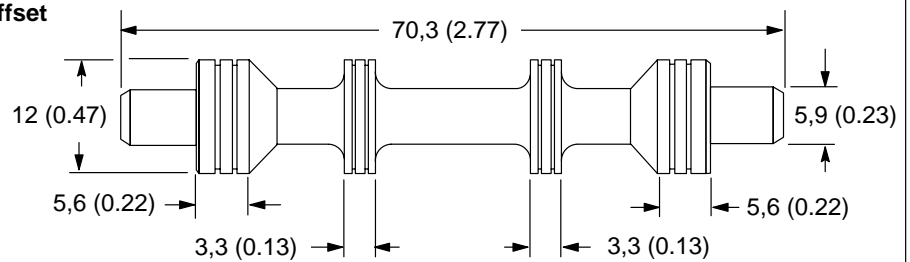
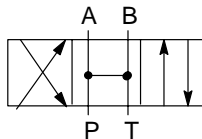


**Type 6N Detent
A&B to Tank, P Blocked
P/N 681615**



DG3V3 -60 DESIGN

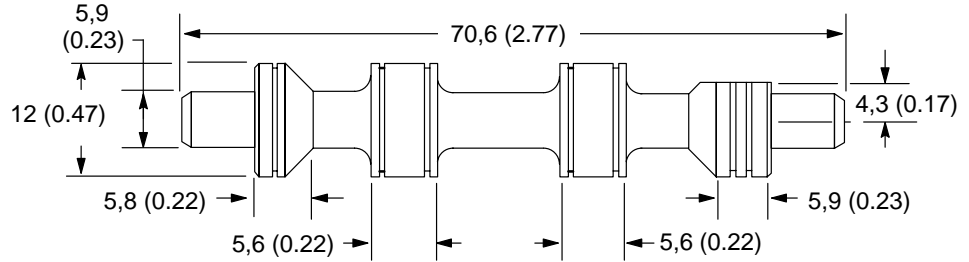
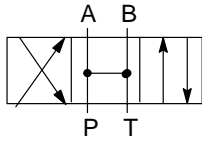
**Type 0 Spring Centered, Spring Offset
Open Center
P/N 694435**



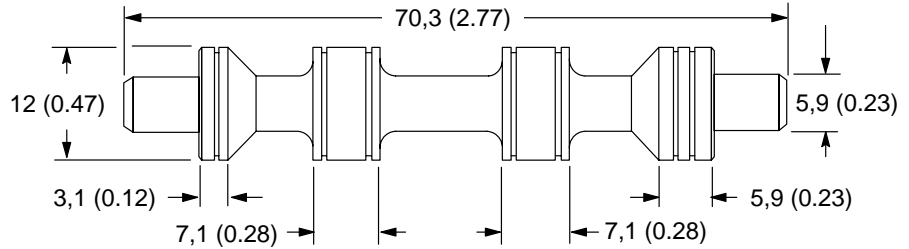
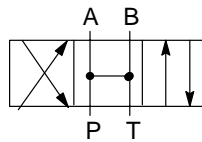
DG3V3 -60 DESIGN

mm (inch)

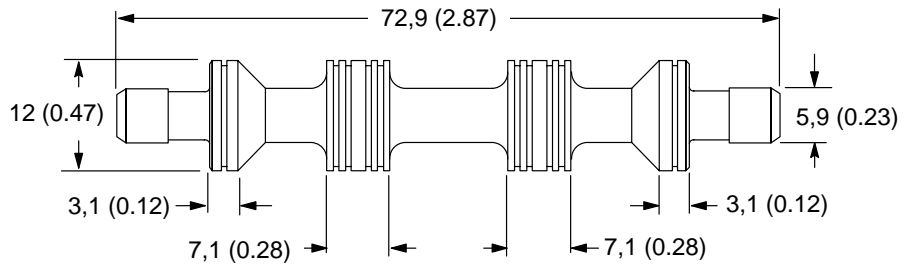
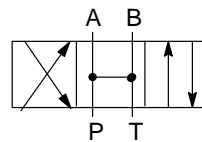
**Type 0A Spring Centered
Open Center
P/N 694537**



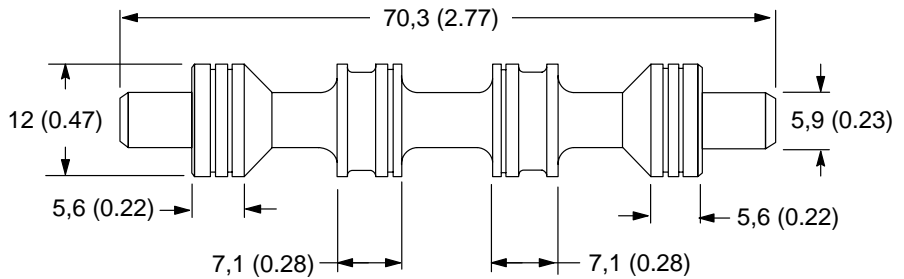
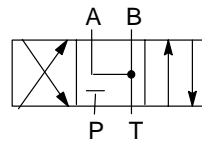
**Type 2A Spring Centered
Open Center
P/N 698839**



**Type 2N No-Spring Detented
Open Center
P/N 698842**

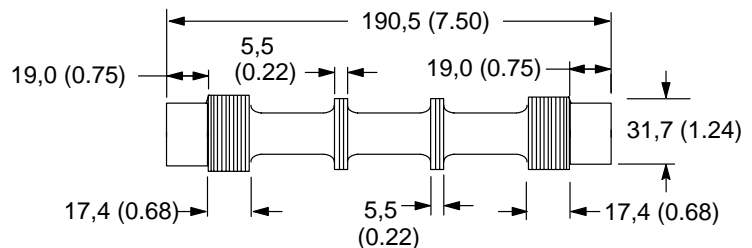
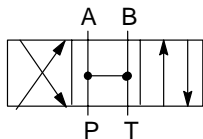


**Type 6 Spring Centered
A & B to Tank, P Blocked
P/N 694437**



DG3S4, DG5S4, DG19S4 -50/-51 DESIGNS & DG5S8 -10/30/40 DESIGNS

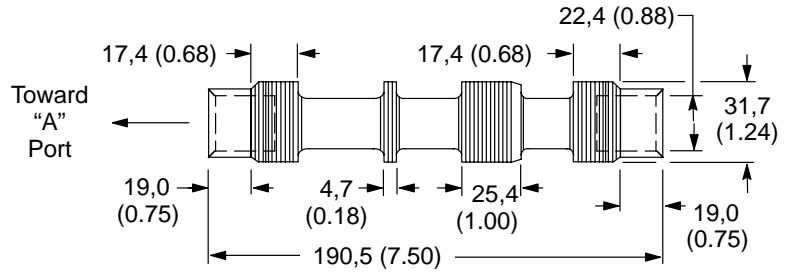
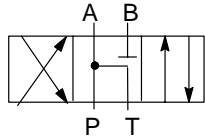
**Type 0
Fully Open
P/N 363495**



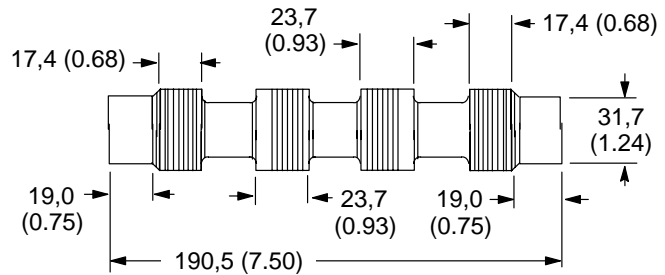
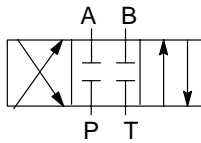
DG3S4, DG5S4, DG19S4 -50/-51 DESIGNS & DG5S8-10/30/40 DESIGNS

mm (inch)

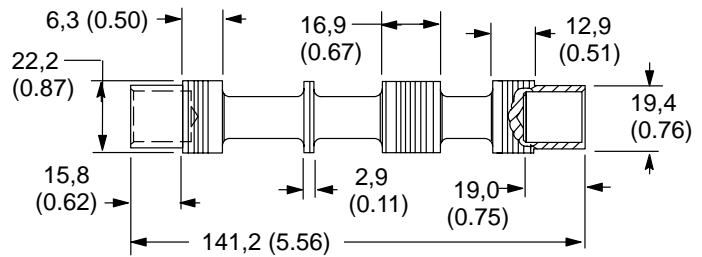
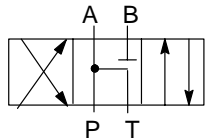
Type 1
P & A to Tank, B Blocked
P/N 276623



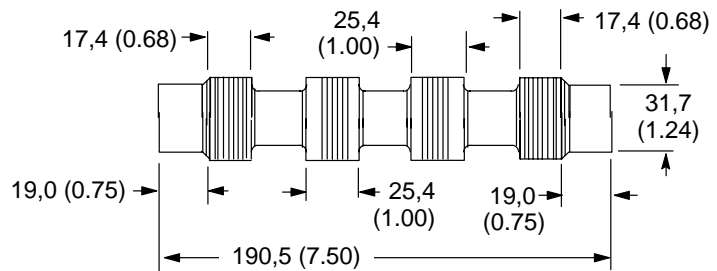
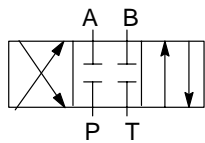
Type 1
Closed Center
P/N 276624



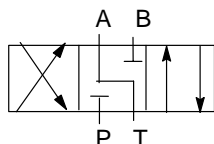
Type 1, 11
Open Center, P & A to Tank, B Blocked
P/N 431972



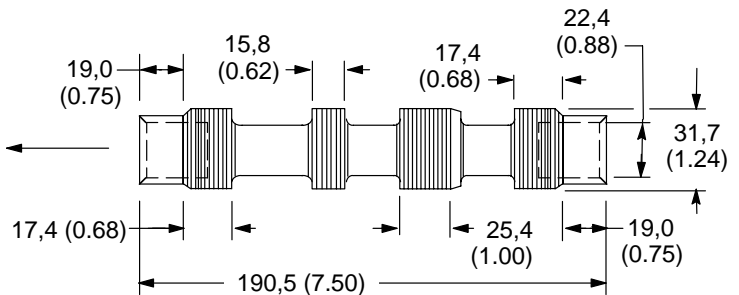
Type 2
Closed Center
P/N 363496



Type 3 & 31
A Open to Tank, P & B Blocked
P/N 276625



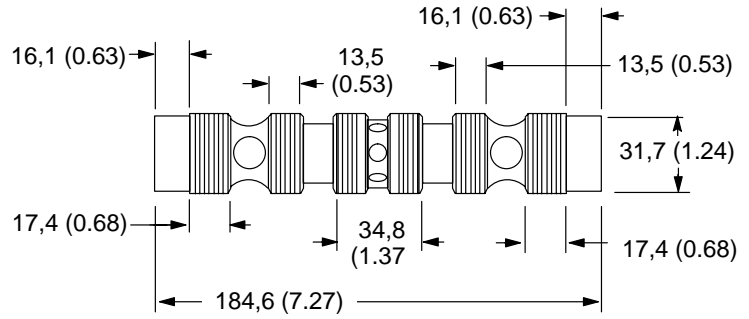
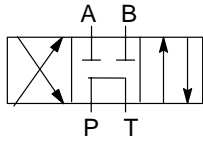
3 Toward "A" Port
31 Toward "B" Port



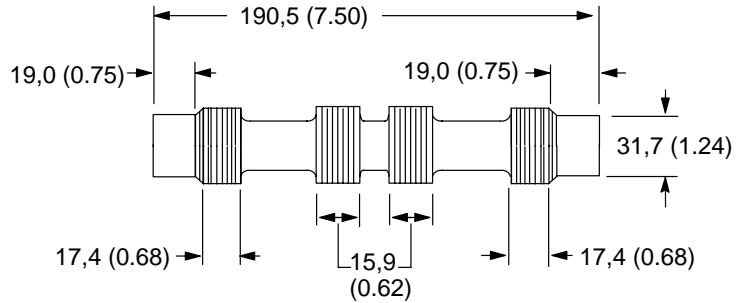
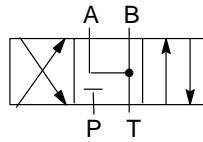
DG3S4, DG5S4, DG19S4 -50/-51 DESIGNS & DG5S8 -10/30/40 DESIGNS

mm (inch)

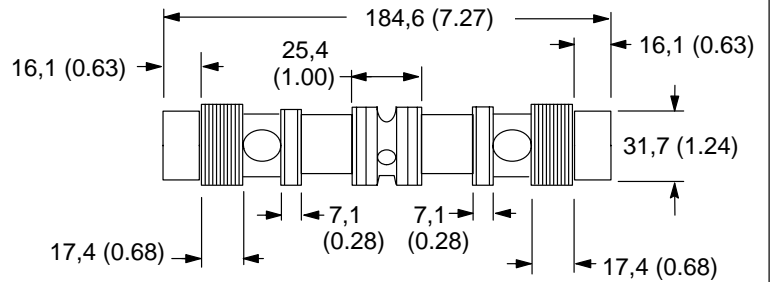
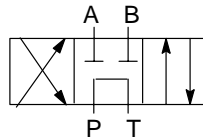
Type 4
Tandem with Closed Center Crossover
P/N 276626



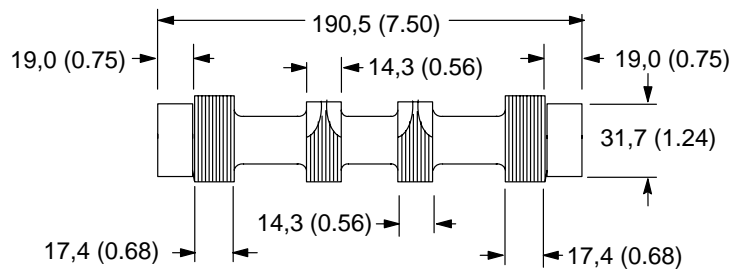
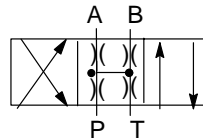
Type 6
A & B to Tank, P Blocked
P/N 363498



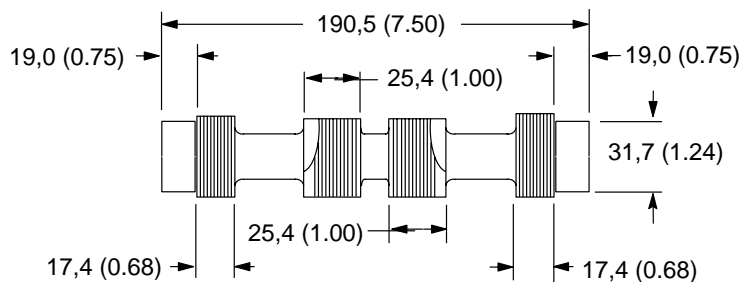
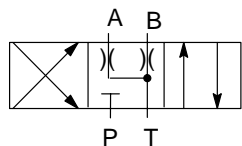
Type 8
Tandem with Open Center Crossover
P/N 363499



Type 9
Open Over Tapers
P/N 363500



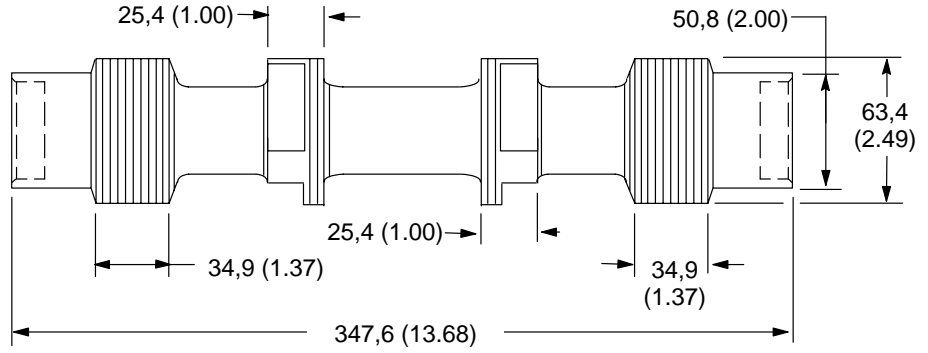
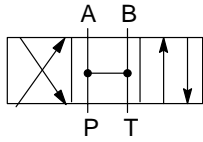
Type 33
Controlled Leakage from A & B to Tank,
P Blocked
P/N 363501



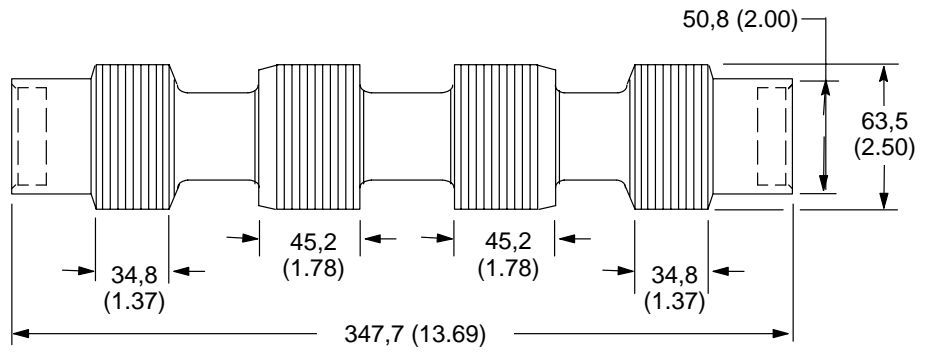
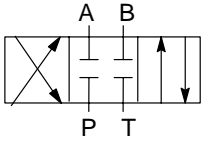
DG5S-H8 (HIGH FLOW) -20 DESIGN SERIES FOUR-WAY VALVE

mm (inch)

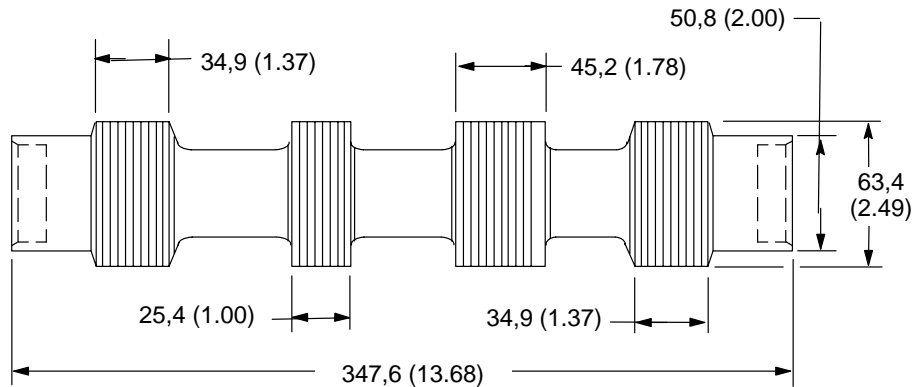
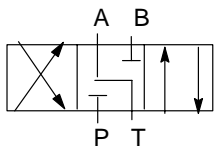
Type 0
Fully Open
P/N 273677



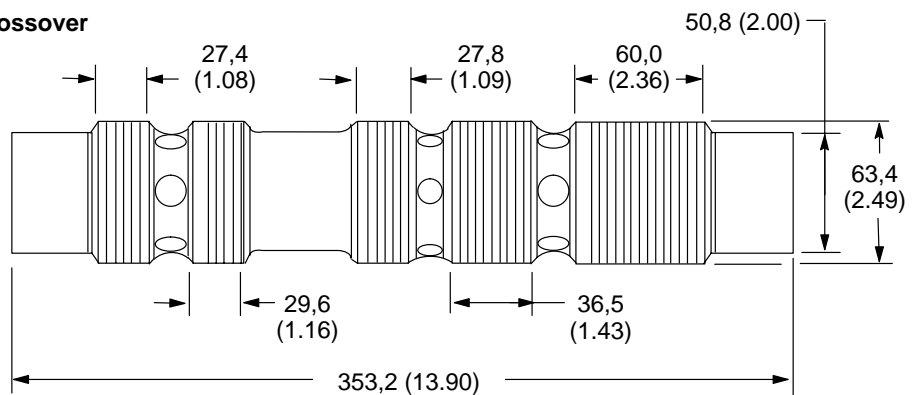
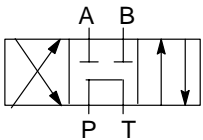
Type 2
Closed Center
P/N 273676



Type 3
A Open to Tank, P&B Blocked
P/N 275803



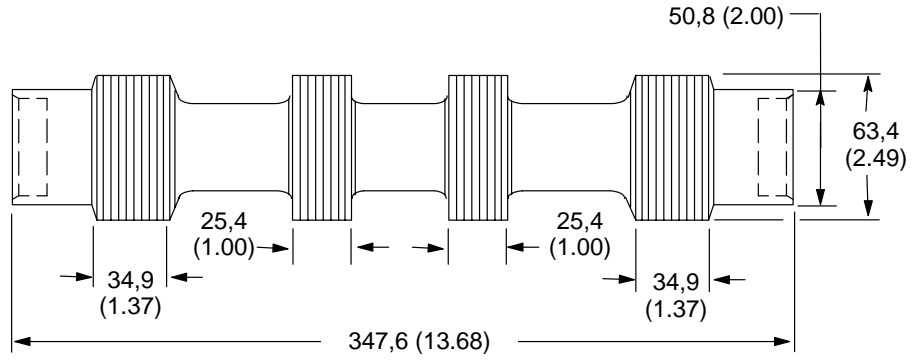
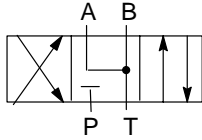
Type 4
Tandem with Closed Center Crossover
P/N 273720



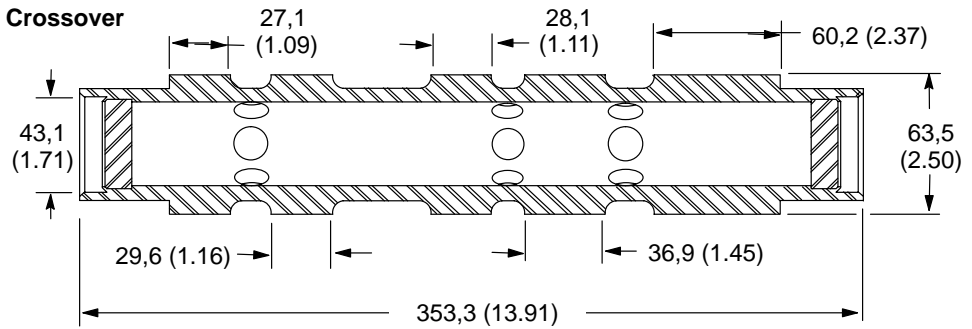
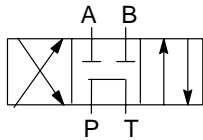
DG5S-H8 (HIGH FLOW) -20 DESIGN SERIES FOUR-WAY VALVE

mm (inch)

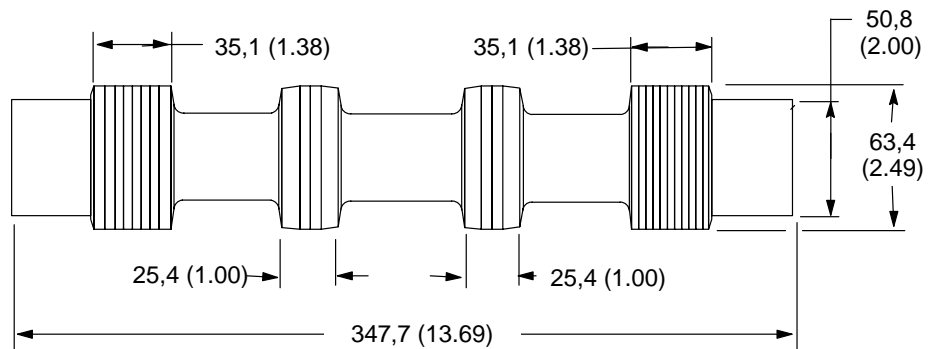
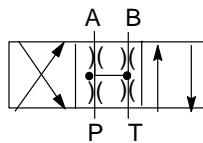
Type 6
A&B Open to Tank, P Blocked
P/N 275804



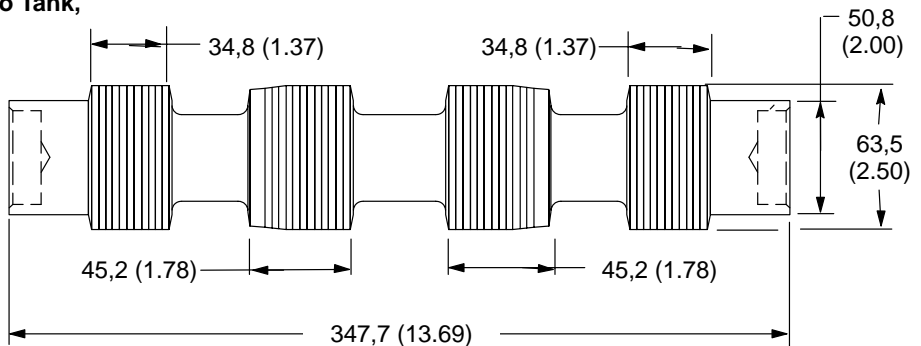
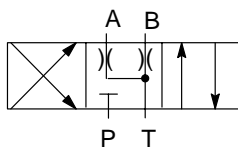
Type 8
Tandem with Open Center Crossover
P/N 275805



Type 9
Open over Tapers
P/N 275806



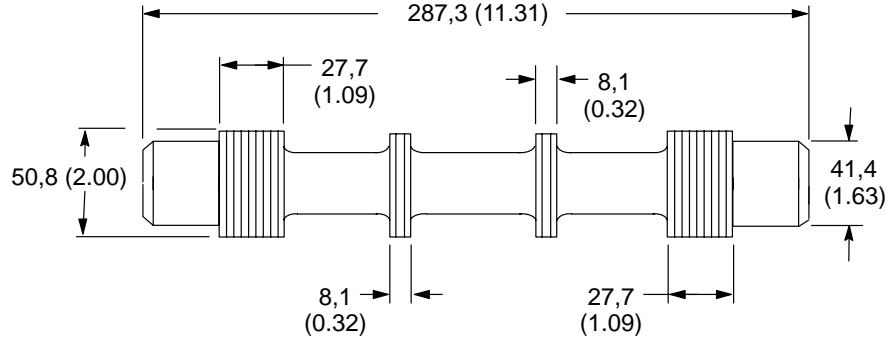
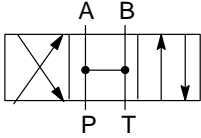
Type 33
Controlled Leakage from A & B to Tank,
P Blocked
P/N 317777



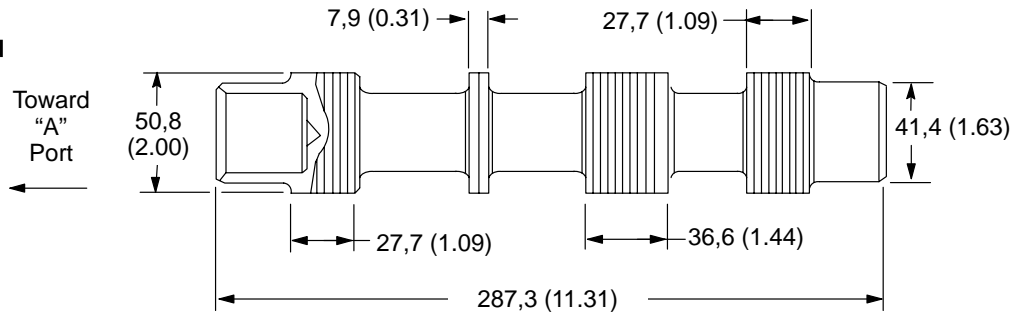
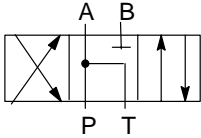
DG3S4, DG5S4, DG19S4 -50/-51/-90/-100 DESIGNS & DG5S8 -10 DESIGN

mm (inch)

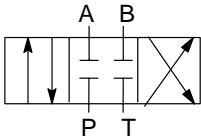
Type 0
Fully Open
P/N 364037



Type 1
P & A to Tank, B Blocked
P/N 331404

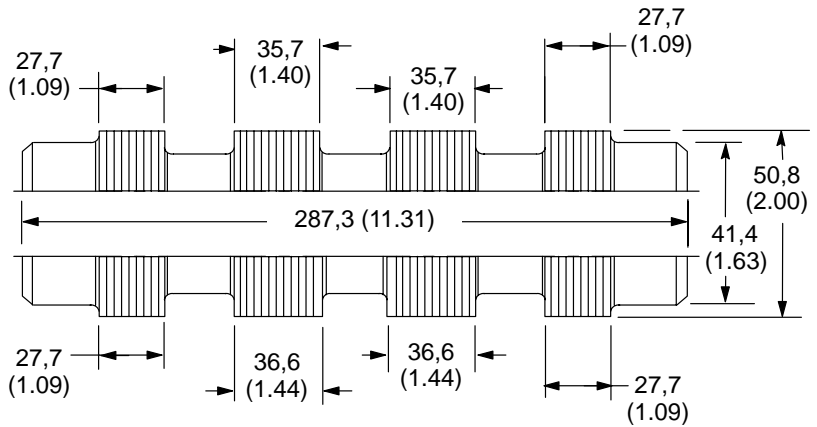


Type 2
Closed Center

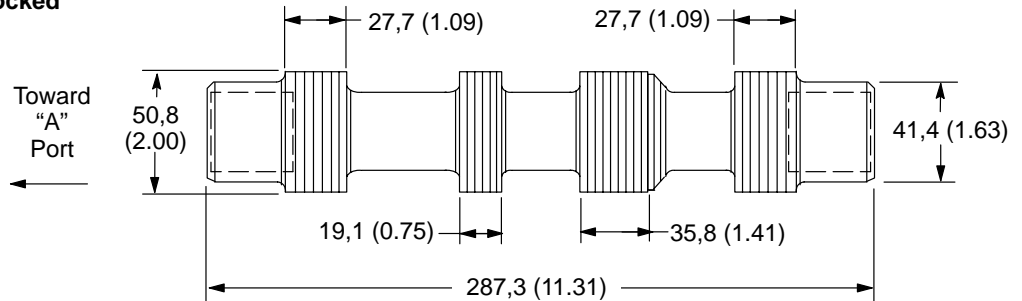
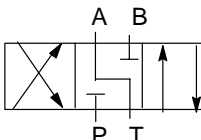


277478 -51 Design
DG3 Spring Offset
& -50 Design

364038 (-51,
-90/-100 Design)



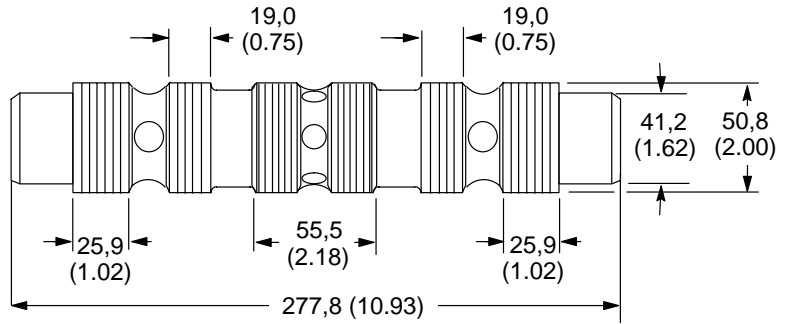
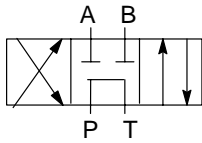
Type 3
A Open to Tank, P & B Blocked
P/N 277479



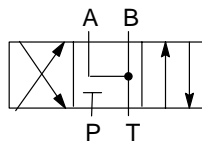
DG3S4, DG5S4, DG19S4 -50/-51/-90/-100 DESIGNS & DG5S8 -10 DESIGN

mm (inch)

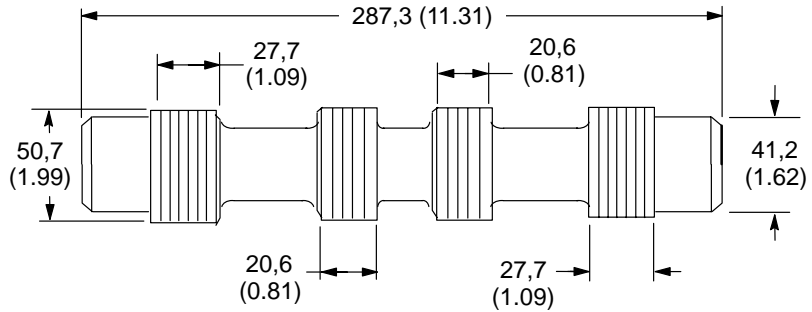
Type 4
Tandem with Closed Center Crossover
P/N 281193



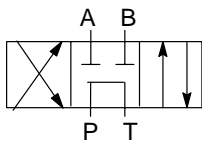
Type 6
A&B Open to Tank, P Blocked



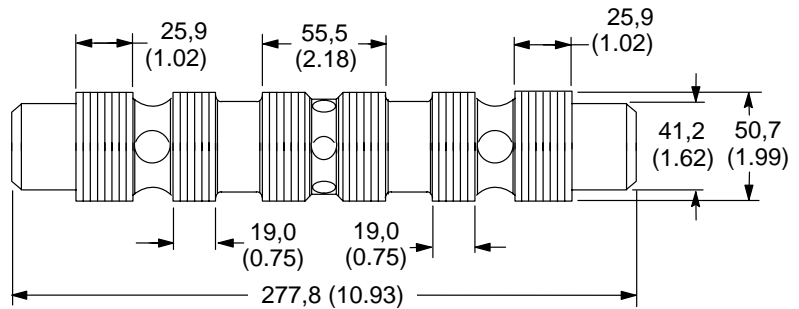
364039
(-51, -90/
-100 Design)



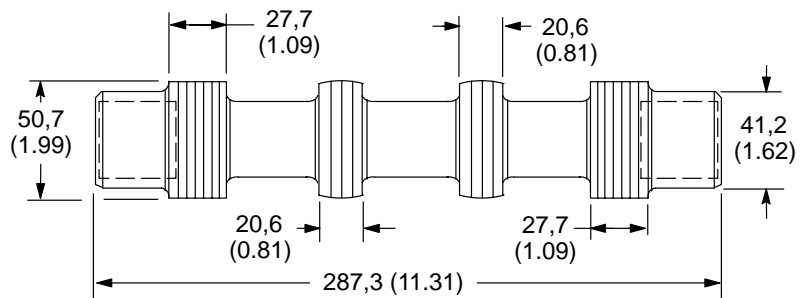
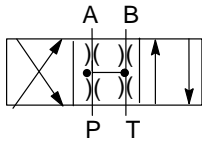
Type 8
Tandem with Open Center Crossover



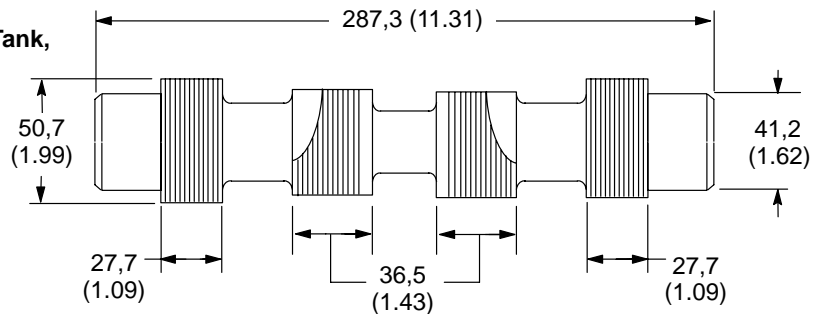
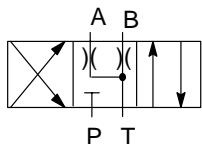
281194
(-50 Design)



Type 9
Open over Tapers
P/N 277563



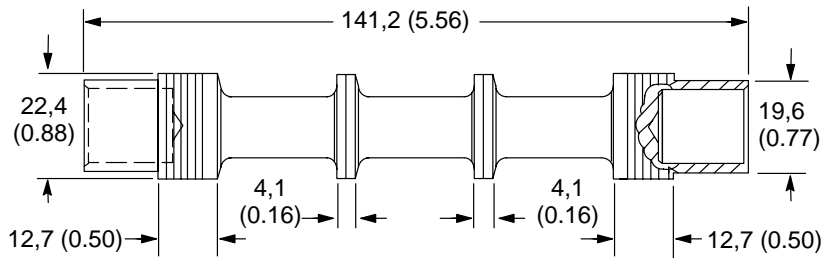
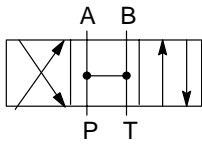
Type 33
Controlled Leakage from A & B to Tank,
P Blocked
P/N 364042



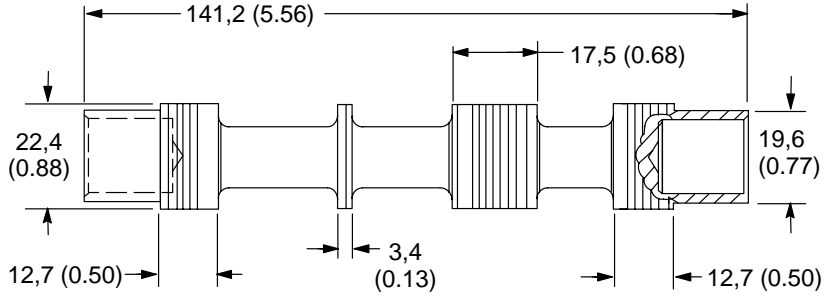
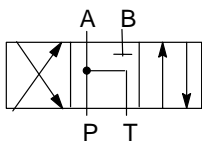
DG5S4-10 60/70 DESIGNS

mm (inch)

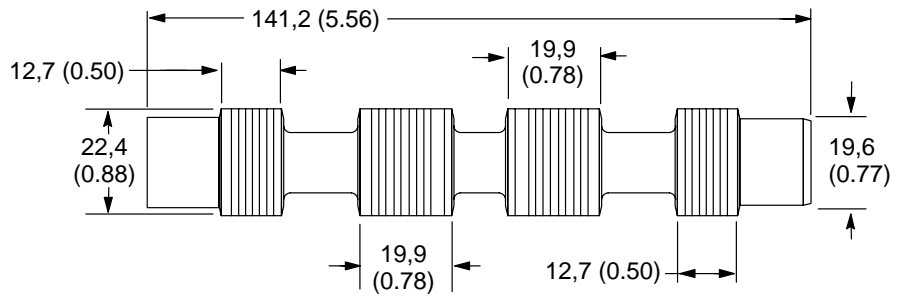
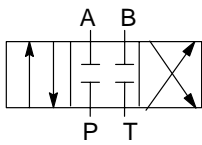
Type 0
Center Condition - Fully Open
P/N 399891



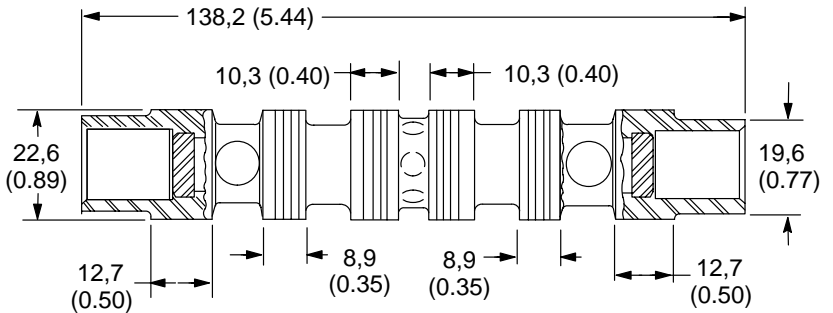
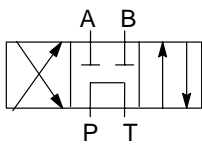
Type 1/11
Center Condition - P & A to Tank,
B Blocked
P/N 431972



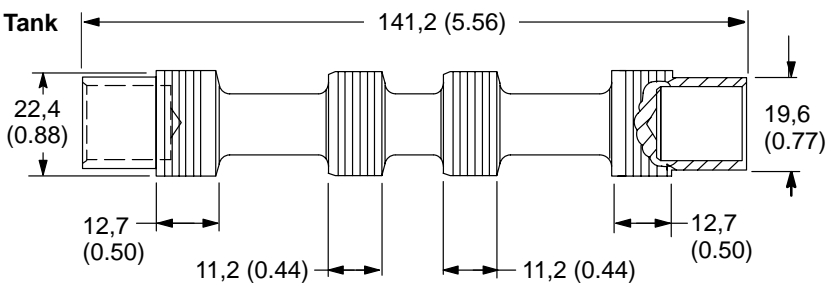
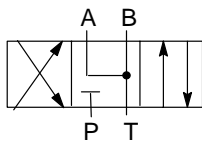
Type 2
Closed Center
P/N 399892



Type 4
Tandem with Closed Center Crossover
P/N 413481



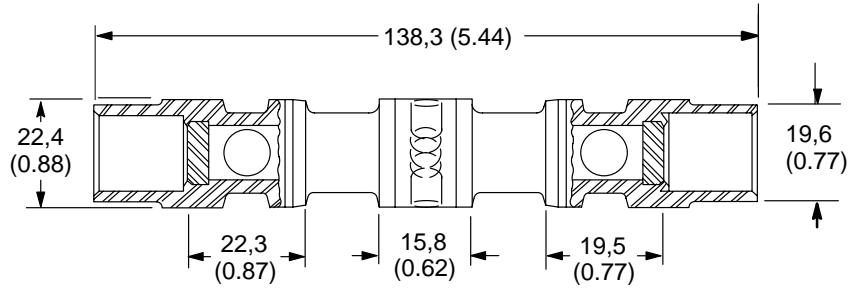
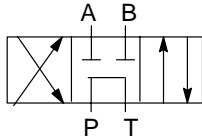
Type 6
Open Center, P Blocked, A & B Open to Tank
P/N 399894



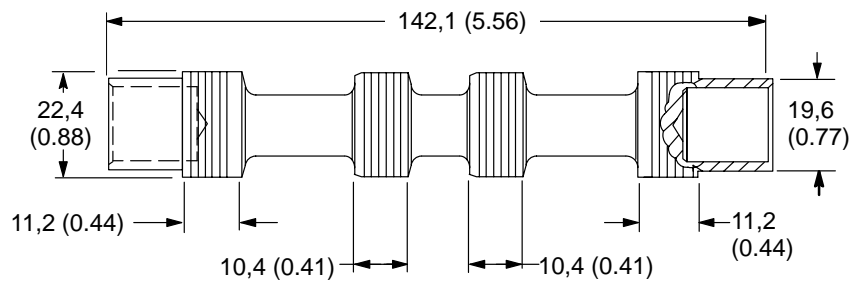
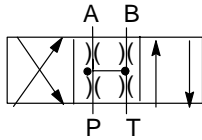
DG5S4-10 -60/70 DESIGN

mm (inch)

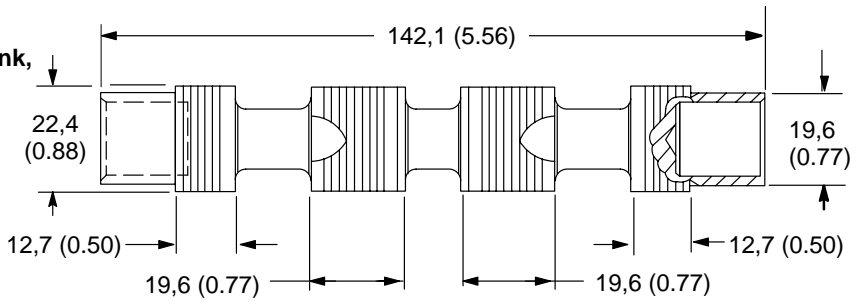
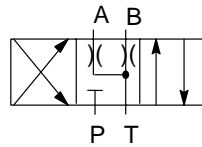
Type 8
Tandem with Open Center Crossover
P/N 399896



Type 9
Open Over Tapers
P/N 413483

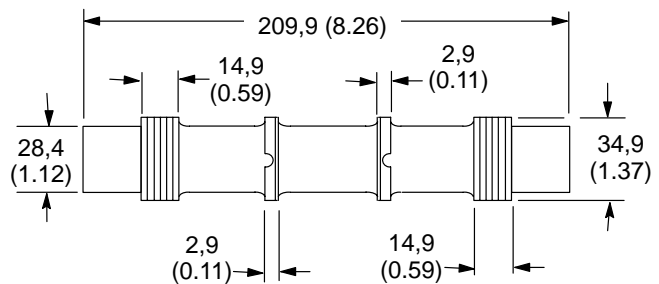
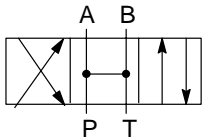


Type 33
Controlled Leakage from A & B to Tank,
P Blocked
P/N 399897



DG3S, DG5S-H8 (HIGH FLOW) FOUR WAY VALVE 20/60/70 DESIGN

Type 0
Open Center
P/N 786350

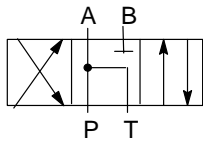


DG3S, DG5S-H8 (HIGH FLOW) FOUR WAY VALVE 20/60/70 DESIGNS

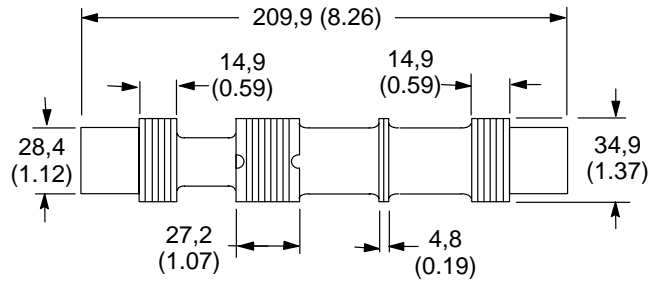
mm (inch)

Type 1
P & A to Tank, B Blocked

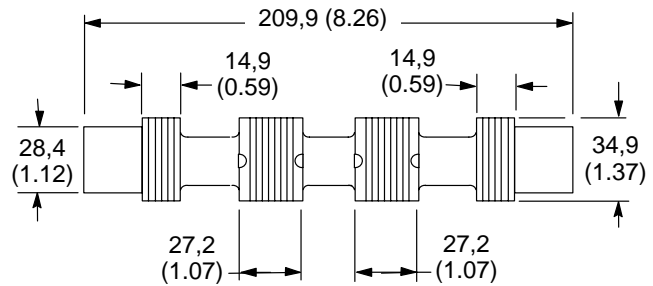
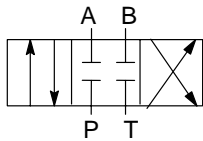
Type 11
P & B to Tank, A Blocked
P/N 786557



Toward
"B"
Port ←

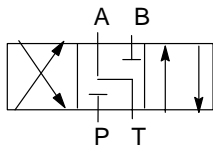


Type 2
Closed Center
P/N 786349

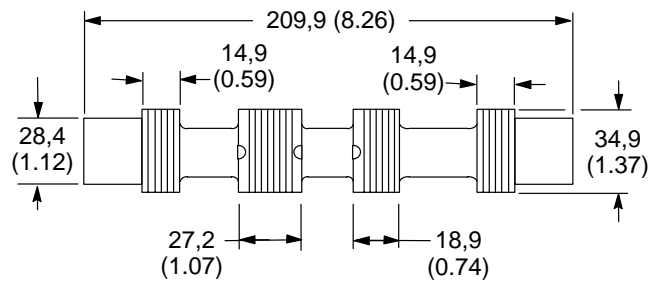


Type 3
A Open to Tank, P & B Blocked

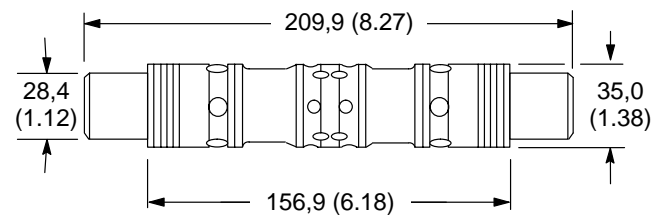
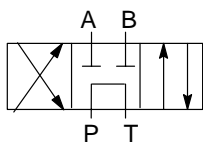
Type 31
P Open to B, A & Tank Blocked
P/N 786558



←
3 Toward "B" Port
31 Toward "A" Port



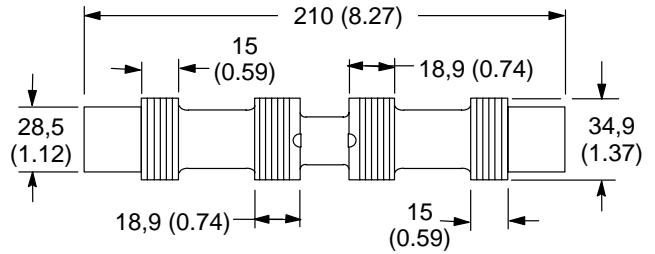
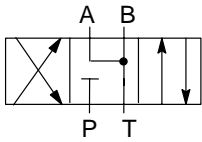
Type 4
Tandem with Closed Center Crossover
P/N 628162



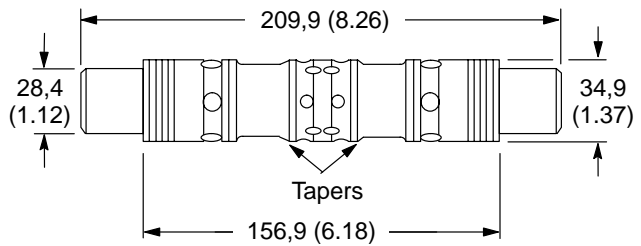
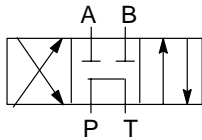
DG3S, DG5S-H8 (HIGH FLOW) FOUR WAY VALVE 20/60/70 DESIGNS

mm (inch)

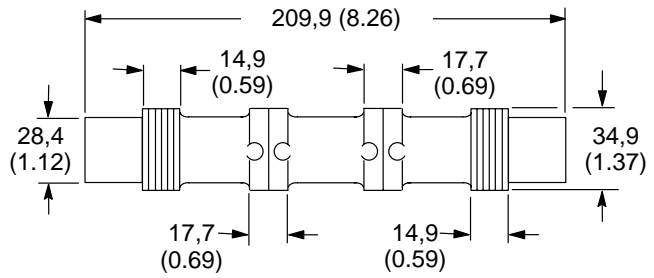
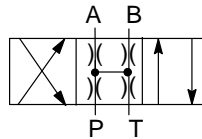
Type 6
A & B Open to Tank, P Blocked
P/N 786559



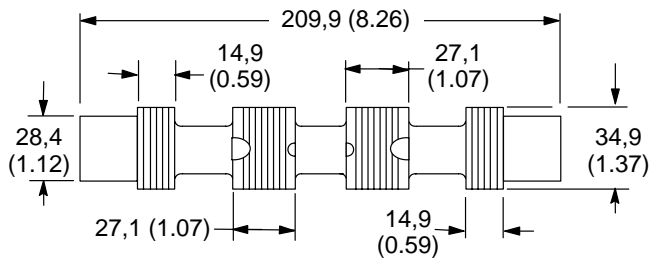
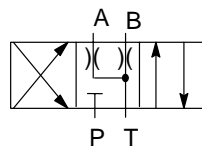
Type 8
Tandem with Open Center Crossover
P/N 627221



Type 9
Open Over Tapers
P/N 786561



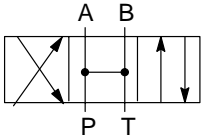
Type 33
Controlled Leakage from A & B to Tank,
P Blocked
P/N 786562



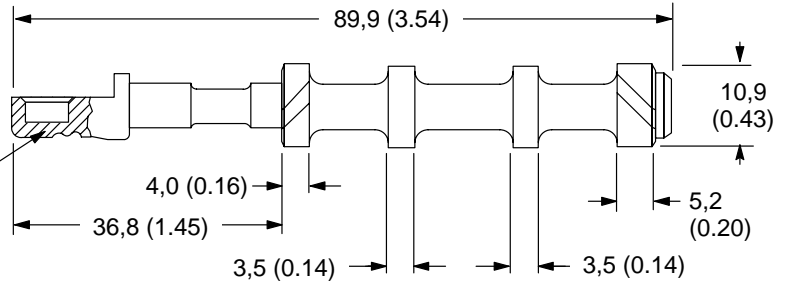
DG17/20V-3 -40 DESIGN

mm (inch)

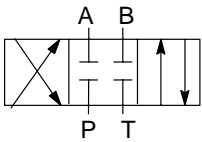
Type 0C/N Spring Centered/Detent Fully Open
P/N 683222 (0C Spring Centered)
P/N 683219 (0N Detent)



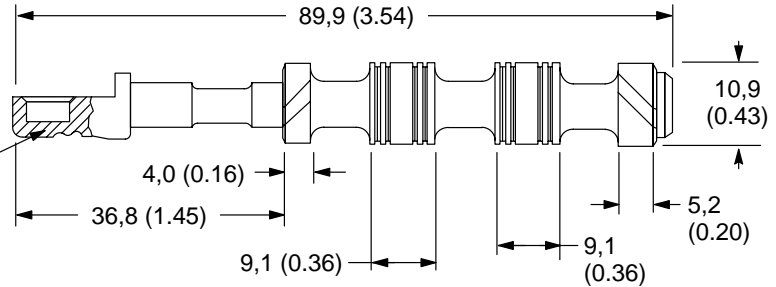
Detent Models Only



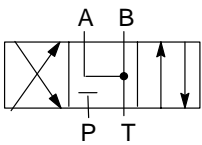
Type 2C/N Spring Centered/Detent Closed Center
P/N 683223 (2C Spring Centered)
P/N 989729 (2N Detent)



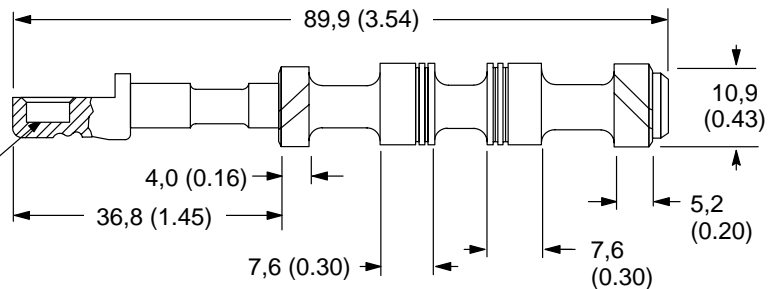
Detent Models Only



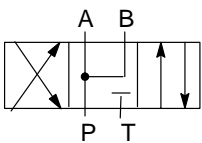
Type 6C/N Spring Centered/Detent A&B Open to Tank, P Blocked
P/N 683224 (6C Spring Centered)
P/N 989730 (6N Detent)



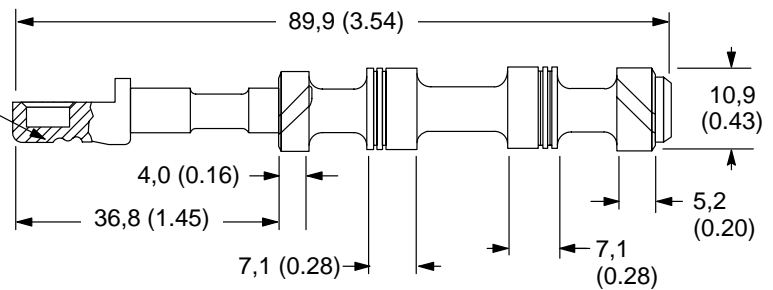
Detent Models Only



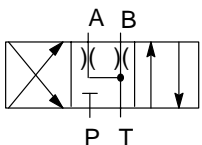
Type 7N Detent P to A & B, Tank Blocked
P/N 683220



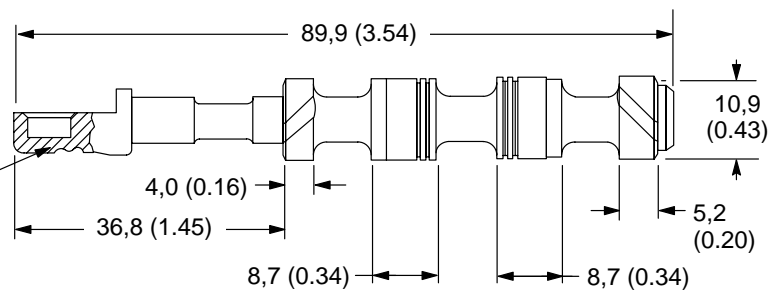
Detent Models Only



Type 33C/N Spring Centered/Detent Controlled Leakage from A & B to T, P Blocked
P/N 683225 (33C Spring Centered)
P/N 683221



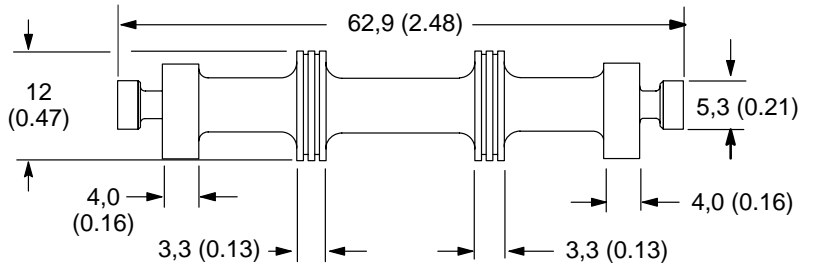
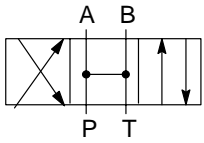
Detent Models Only



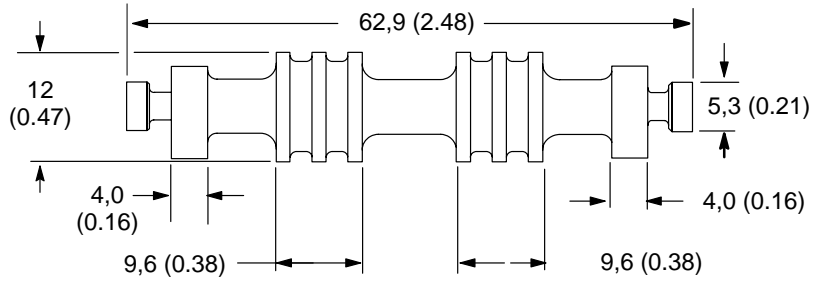
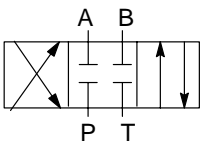
DG17V3 -60 DESIGN

mm (inch)

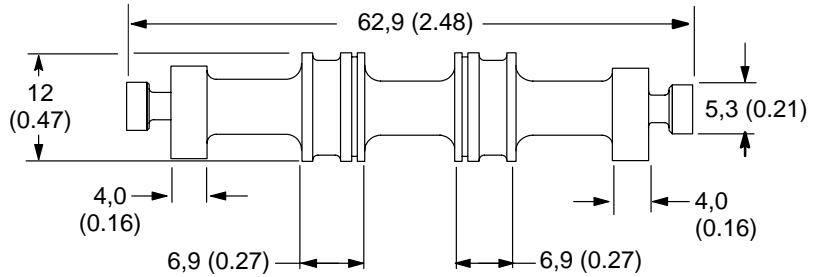
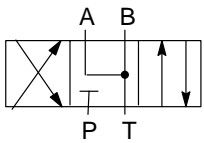
**Type 0C
Open Center
P/N 893025**



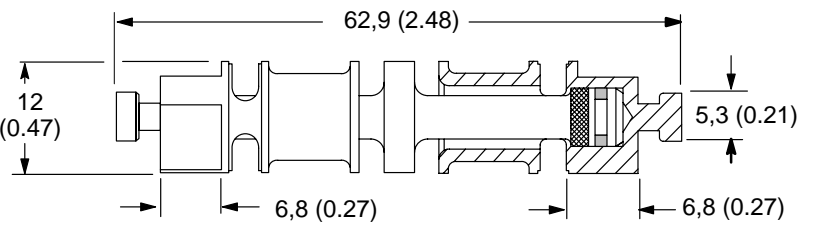
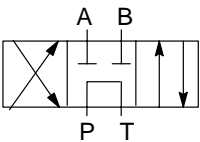
**Type 2C
Closed Center
P/N 893026**



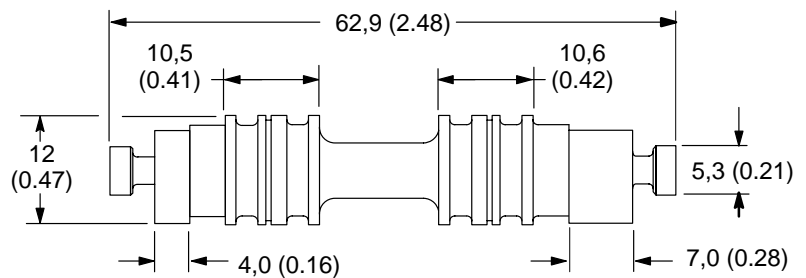
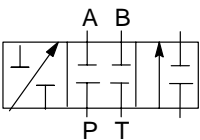
**Type 6C
Closed Center, A & B to Tank
P/N 893027**



**Type 8
Tandem Center, P to T
P/N 893029**



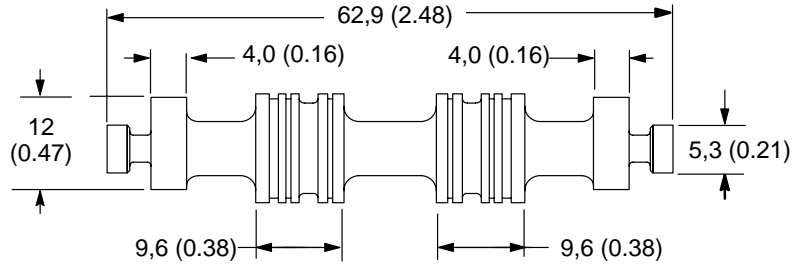
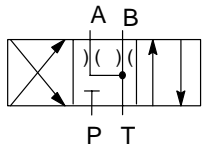
**Type 22A
Closed Center, 2-Way
P/N 893035**



DG17V3 -60 DESIGN

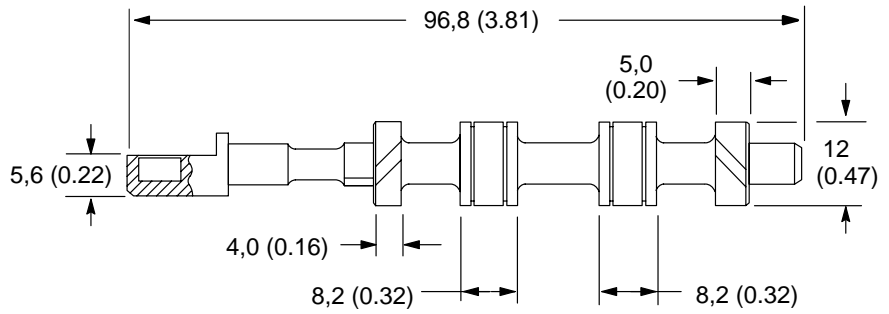
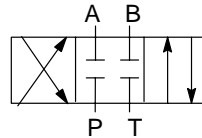
mm (inch)

Type 33C
Closed Center, Bleed to Tank
P/N 893030

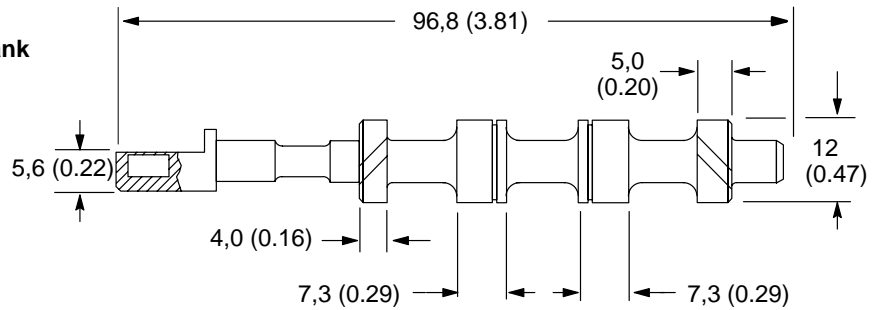
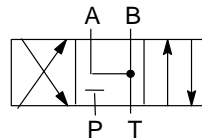


DG20V3 -60 DESIGN

Type 2
Closed Center, All Ports
P/N 916622

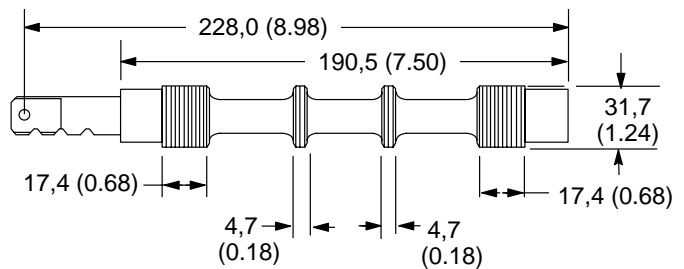
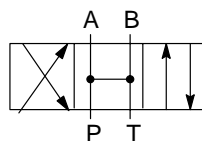


Type 6
Open Center, P Closed, A & B to Tank
P/N 916623



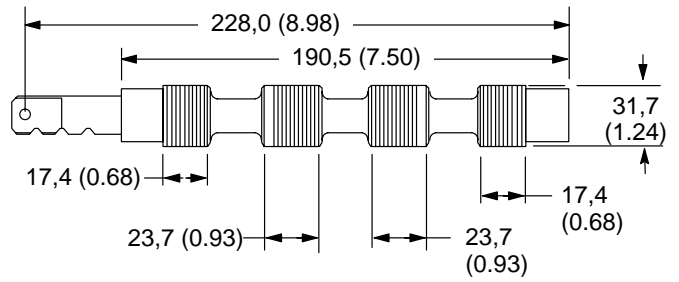
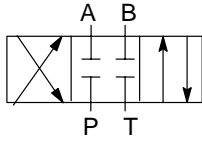
DG17S4-06-50 & DG17S-8--10**

Type 0
Open Center
P/N 281922

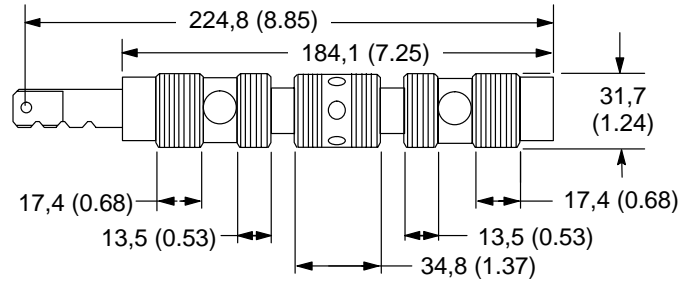
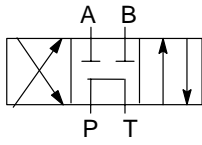


DG17S4-06-50 & DG17S-8-**-10

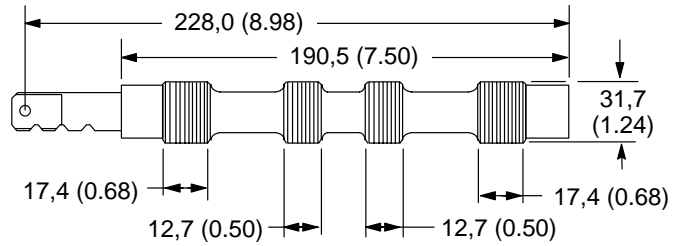
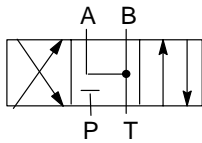
Type 2
Closed Center
281924



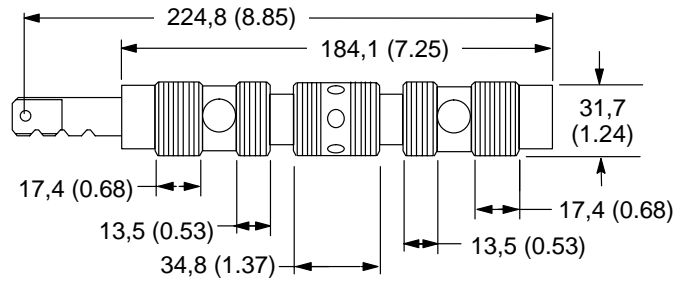
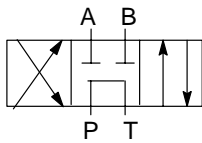
Type 4
Tandem with Closed Center Crossover
P/N 281926



Type 6
A & B Open to Tank, P Blocked
P/N 281927

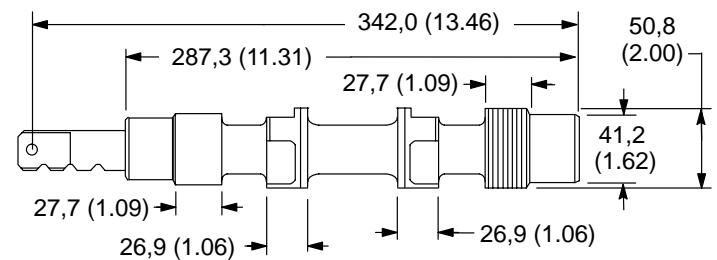
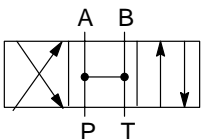


Type 8
Tandem with Open Center Crossover
P/N 281929



DG17S4 -53/-100 DESIGNS

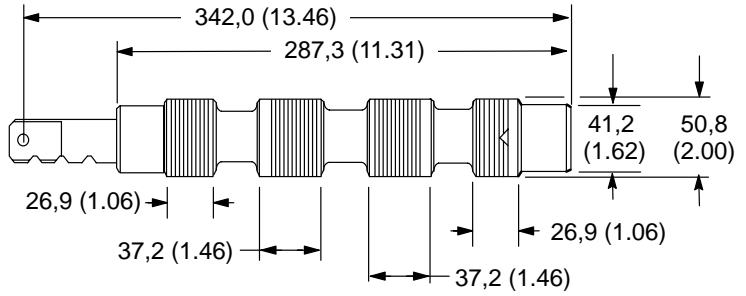
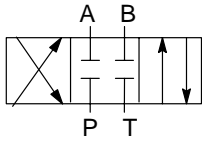
Type 0
Center Condition - Open
P/N 282281



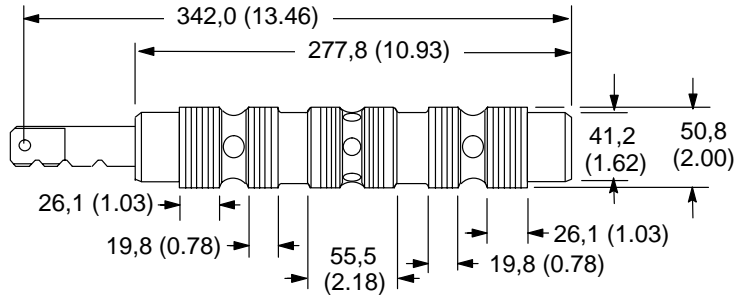
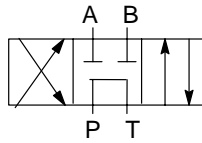
DG17S4 -53/- 100 DESIGNS

mm (inch)

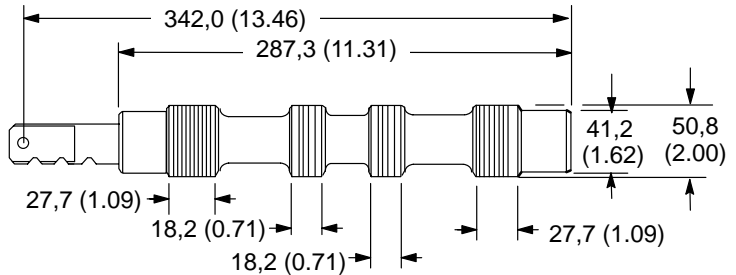
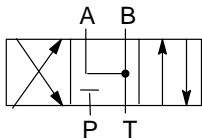
Type 2
Center Condition - Closed
P/N 282287



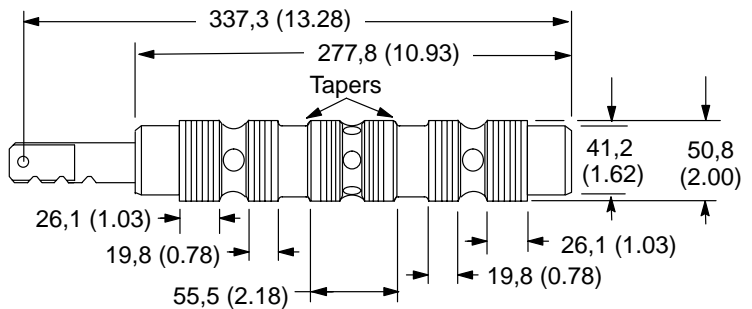
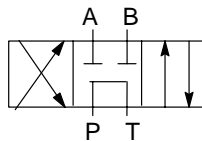
Type 4
Tandem with Closed Center Crossover
P/N 282286



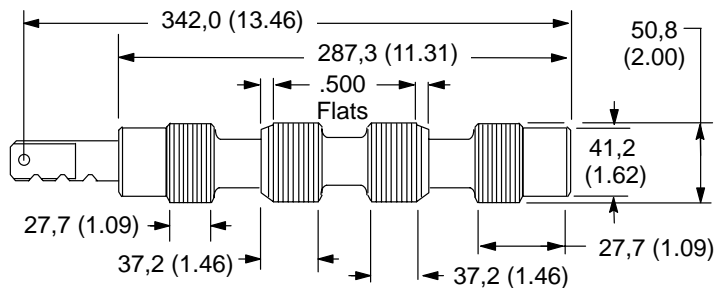
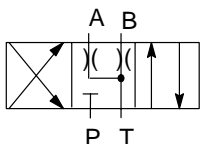
Type 6
A&B Open to T, P Blocked
P/N 282283



Type 8
Tandem with Open Center Crossover
P/N 282339



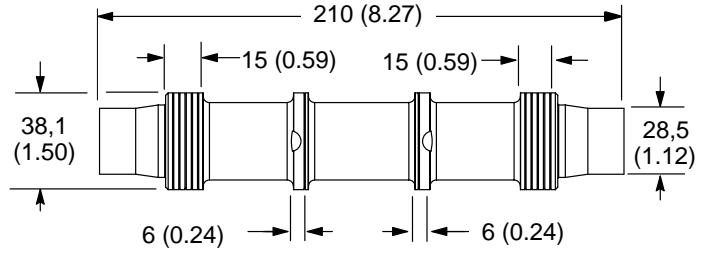
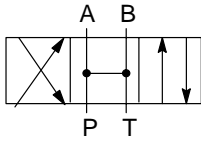
Type 33
Controlled Leakage from A&B to T,
P Blocked
P/N 282285



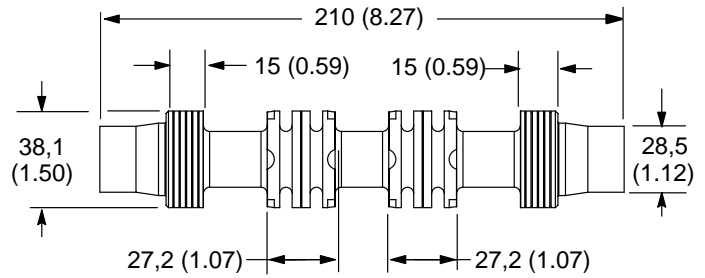
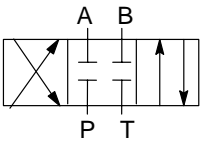
DG3V8/DG5V8 -10 DESIGN

mm (inch)

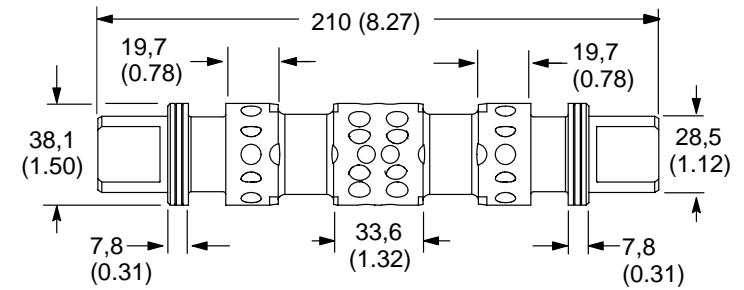
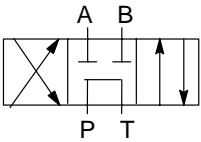
Type 0
Open Center
P/N 02-324575



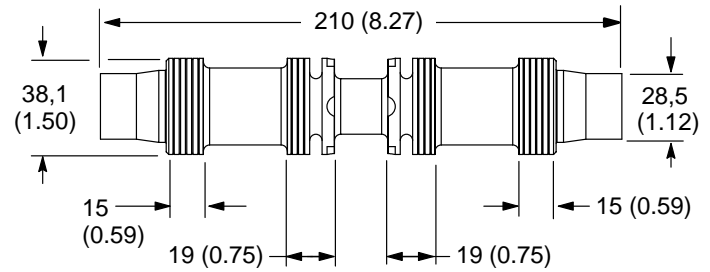
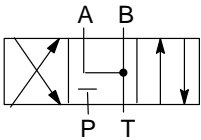
Type 2
Closed Center
P/N 02-324577



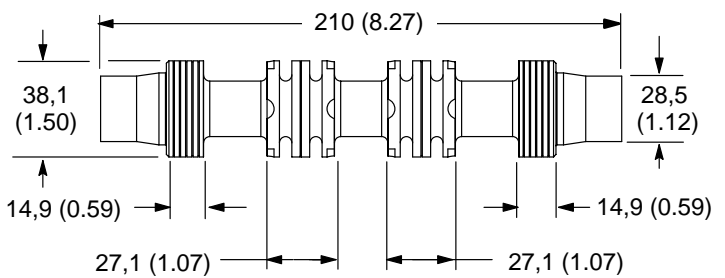
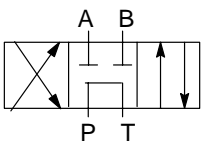
Type 4
Tandem Center, Closed Crossover
P/N 02-324579



Type 6
Closed Center, P Only
P/N 02-324580



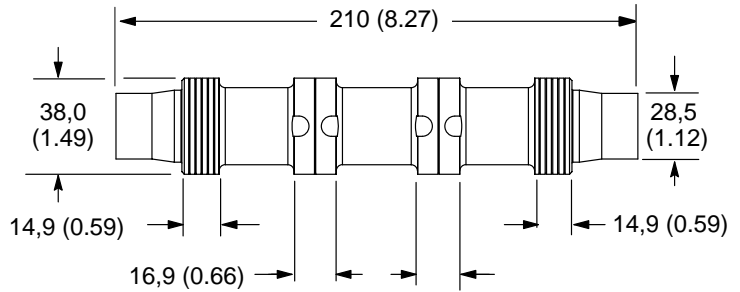
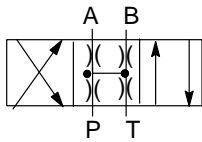
Type 8
Tandem Center, Open Crossover
P/N 02-324582



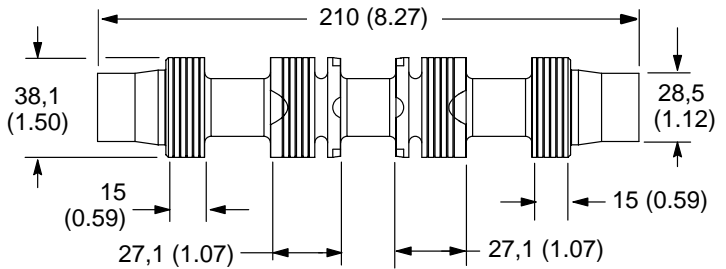
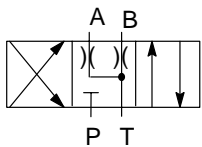
DG3V8/DG5V8 -10 DESIGN

mm (inch)

Type 9
Open Center (Partial All Ports)
P/N 02-324583

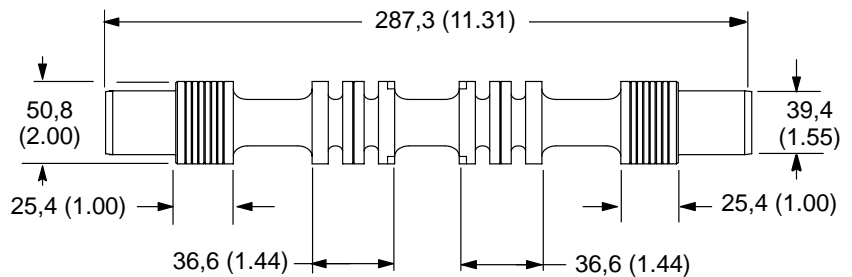
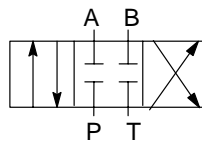


Type 33
A & B Open to Tank over Tapers,
P Blocked
P/N 02-324584

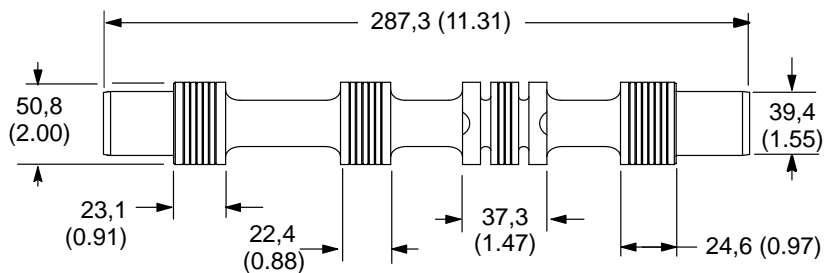
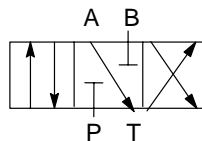


DG3V10/DG5V10 -10 DESIGN

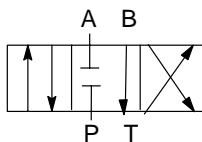
Type 2
Closed Center
P/N 02-317237



Type 3
A Open to Tank, P & B Blocked
P/N 02-317227



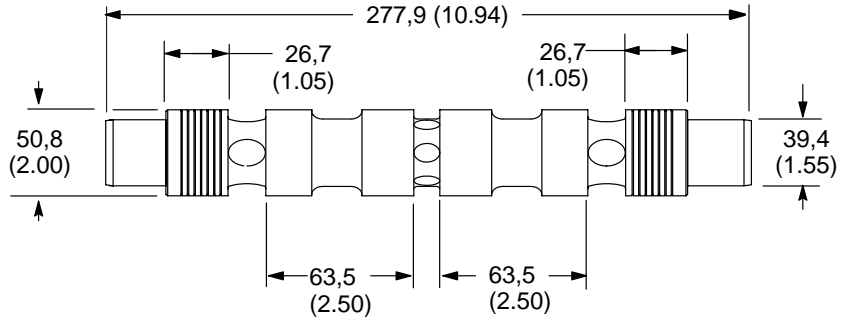
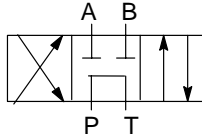
Type 31
B Open to Tank, P&A Blocked



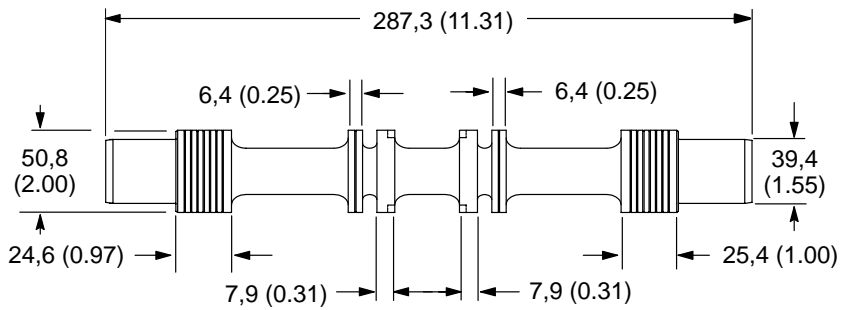
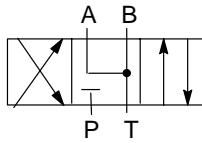
DG3V10/DG5V10 -10 DESIGN

mm (inch)

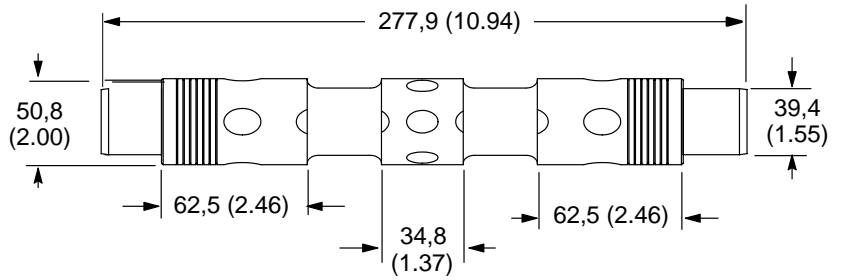
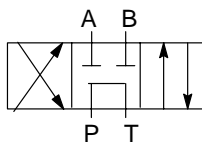
Type 4
P to Tank, A & B Blocked
Closed Crossover
P/N 02-317231



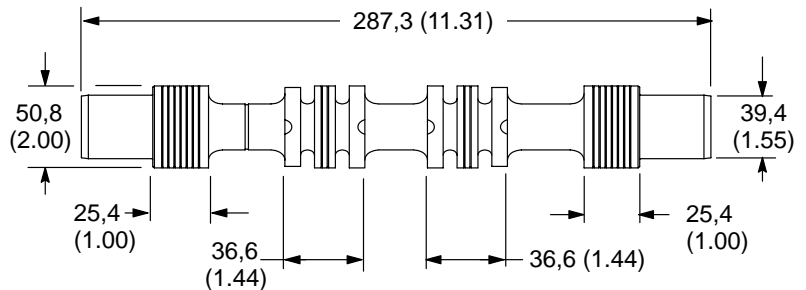
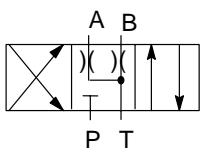
Type 6
Closed Center (P Only)
P/N 02-317238



Type 8
P Open to Tank, A & B Blocked
P/N 02-317233



Type 33
Closed Center, Bleed A & B
P/N 02-317234



Eaton Hydraulics

15151 Highway 5
Eden Prairie, MN 55344
Telephone: 612 937-7254
Fax: 612 937-7130
www.eatonhydraulics.com

46 New Lane, Havant
Hampshire PO9 2NB
England
Telephone: (44) 170-548-6451
Fax: (44) 170-548-7110

