

Service Data

Vickers®

Directional Controls



Air Pilot Operated Directional Control Valve

DG18V-3-*A/B/F(L)-(P2)-(V)-*-60/61

DG18V-3-*C/N-(V)-*-60/61



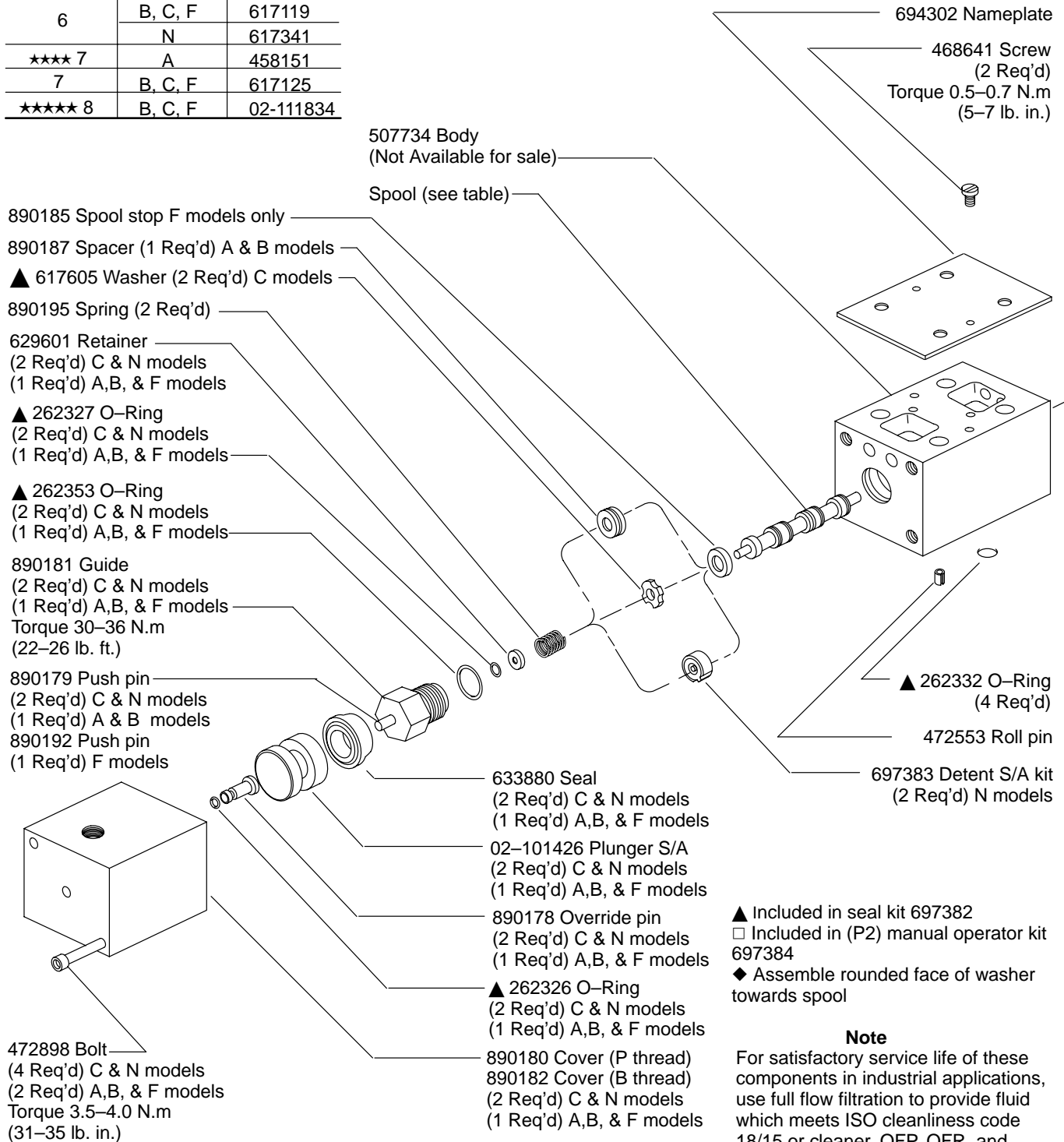
Released 08-01-97

I-3896-S

Spool Type	Model	Spool
★ O	A	617498
	B, C, F	617121
	N	890189
★★ 1, 11	B, C, F	458263
★ 2	A	617120
	B, C, F	617118
	N	617126
★★★★ 22	A	617122
★★★ 3, 31	B, C, F	617124
	33	B, C, F
★ 6	A	890188
6	B, C, F	617119
	N	617341
★★★★ 7	A	458151
7	B, C, F	617125
	★★★★ 8	B, C, F

Spool Assembly Note

- ★ Assemble type "OA", "2A", and "6A" spool in body with longer end land opposite of operator.
- ★★ Assemble type "1" spool in body with narrow center land towards "A" port. Assemble type "11" spool in body with narrow center land towards "B" port.
- ★★★ Assemble type "3" spool in body with narrow center land towards "A" port. Assemble type "31" spool in body with narrow center land towards "B" port.
- ★★★★ Assemble type "7A" and "22A" spool in body with reduced longer end Dia. towards operator.
- ★★★★★ "V" Option, operator "A" is at port "A" end of valve and/or operator "B" is at port "B" end of valve, independent of spool type. Type 8 spool valves will always have a "V" present in model code.



507724 End cap
Torque 30–36 N.m
(22–26 lb. ft.)

▲ 262353 O-Ring

890195 Spring (Ref.)

◆ 617605 Washer

DG18V-3-*A-60
Refer to opposite end for
balance of part numbers.

507724 End cap
Torque 30–36 N.m
(22–26 lb. ft.)

▲ 262353 O-Ring

890195 Spring (Ref.)

◆ 617605 Washer

DG18V-3-*B-60
Refer to opposite end for
balance of part numbers.

DG18V-3-*C-60
Refer to opposite end for
balance of part numbers

507724 End cap
Torque 30–36 N.m
(22–26 lb. ft.)

▲ 262353 O-Ring

890195 Spring (Ref.)

◆ 617605 Washer

890186 Spacer

DG18V-3-*F-60
Refer to opposite end for
balance of part numbers.

DG18V-3-*N-60
Refer to "C" layout
for part numbers

Valve Assembly Note

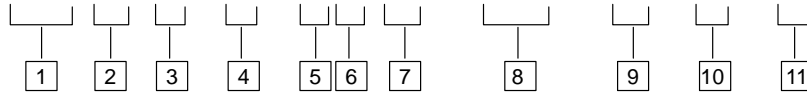
Right hand assembly shown for all single operator models.

For left hand assembly, **DG18V3-*A-(P2)**, all parts are reversed except body.

For left hand assembly, **DG18V3-*B-(P2)** and **DG18V3-*F-(P2)**, all parts are reversed except body and spool.

Model Code

DG 18 V - 3 - * * (L) - (P2) - (V) - * - 6 *



1 Directional control valve, subplate mounted

2 Air pilot operated

3 Rated pressure

350 bar (5000 psi)

4 Interface

ISO 4401-03 (CETOP 3, NFPA D03)

5 Spool type (Center condition)

- 0 – Open center (All ports)
- 1 – Open center (P & A to T)
- 2 – Closed center (All ports)
- 3 – Closed center (P & B)
- 6 – Closed center (P only)
- 7 – Open center (T blocked)
- 8 – Tandem center (P to T)
- 11 – Open center (P & B to T)
- 22 – Closed center (Two-way)
- 31 – Closed center (P & A)
- 33 – Closed center (Bleed A & B)

6 Spool spring arrangement

- A – Spring offset to CYL. A, (Single operator)
- B – Spring centered, (Single operator)
- C – Spring centered (Dual operator)
- F – Spring offset, to CYL. A, shift to center (Single operator)
- N – No-spring, detented

7 Build type

- L – Left hand build (Single operator only)
- Blank – Standard right hand build (Single operator only)

8 Manual override option

- P2 – Manual operator in end cap, (single operators) (Applicable for A(L), B(L) & F(L) models only)
- Blank – Overrides in operator end only

9 Actuator identity

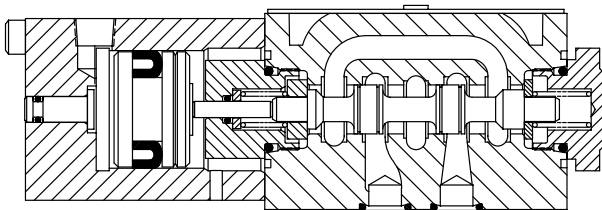
V – Actuator identifier included for all type 8 spools (Refer to spool assembly note ★★★★★)

10 Thread connection type

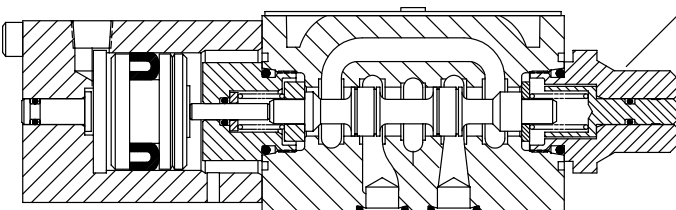
- P – 1/8" NPT threads
- B – 1/8 BSP threads

11 Design number

- 60
- 61

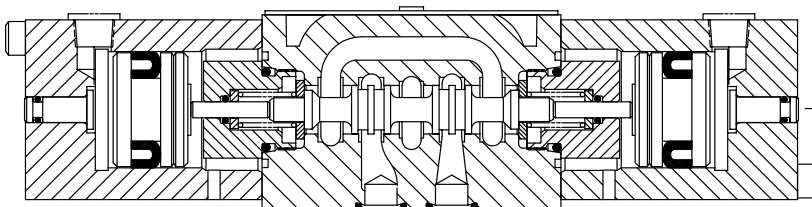


DG18V-3-*A*-60/61 Typical spring offset valve / single operator



□ 507971 Plug & pin S/A
Torque 30–36 N.m (22–26 lb. ft.)

DG18V-3-**-P2*-60/61 With manual operator in end cap / single operator



DG18V-3-*C*-60/61 Typical spring centered valve / dual operator