

# Eaton Solenoid Directional Control Valve

## DG4V-3M-65, DG4V-5M-21



## Eaton DG Valve for mobile equipment

These DG4V-3M-65 and DG4V-5M-21 directional control valves are targeted at mobile applications with demanding environmental requirements for ingress protection and reliability. Built on Eaton's proven industrial valve platform, these valves provide dependable directional control performance in both the CETOP 3 and CETOP 5 sizes. Proportional control is also available in the CETOP 3 size. Integrated Deutsch connectors provide best-in-class IP69K ingress protection – perfect for applications requiring high pressure washdown.

### DG4V-3M-65



- Size D03 / NG06
- Standard Viton Seals
- 80 l/min (21 US GPM)
- Push button overrides
- Proportional control available
- Can be used to pilot DG5V-7 or DG5V-8

**DG4V** – **3M** – \* \* – **M** – **KUP5** – **H** **7** – \*\*

1    2 3    4    5 6    7

|          |   |          |   |
|----------|---|----------|---|
| <b>1</b> | <b>Valve size</b><br><b>3M</b> CETOP 3 / NG6  | <b>5</b> | <b>Coil rating</b><br><b>G</b> 12V DC<br><b>H</b> 24V DC  |
| <b>2</b> | <b>Spool type</b><br>Standard spool as per DG4V3 catalog  | <b>6</b> | <b>Tank pressure rating</b><br><b>7</b> 210 bar (3000psi) |
| <b>3</b> | <b>Spool spring arrangement</b><br>Standard arrangements as per DG4V3 catalog   | <b>7</b> | <b>Design number</b><br><b>65</b> 65 design               |
| <b>4</b> | <b>Coil type</b><br><b>KUP5</b> Integral Deutsch connector male DT04-2P. Mating connector DT06-2S<br><br>* also available with diodes |          |   |

Note: For complete model code, please refer Eaton standard DG D03/NG6 catalog

### Specifications

| Basic features                  | D03/NG06              | D05/NG10               |
|---------------------------------|-----------------------|------------------------|
| Maximum pressure (P, A, B port) | 350 bar (5,000 psi)   | 315 bar (4500 psi)     |
| Maximum pressure (T port)       | 210 bar (3,000 psi)   | 160 bar (2300 psi)     |
| Minimum ambient temperature     | -20 deg C (-4 deg F)  | -20 deg C (-4 deg F)*  |
| Maximum ambient temperature     | +70 deg C (158 deg F) | +70 deg C (158 deg F)* |
| Rated voltage                   | 12 VDC or 24 VDC      | 12 VDC or 24 VDC       |
| Power                           | 30W                   | 30W*                   |



Powering Business Worldwide

## DG4V-5M-21



- Size D05 / NG10
- Standard Viton seals
- Flows up to 120 l/min (31.5 US GPM)
- Push button overrides

### Specifications

| Basic features                  | D03/NG06              | D05/NG10               |
|---------------------------------|-----------------------|------------------------|
| Maximum pressure (P, A, B port) | 350 bar (5,000 psi)   | 315 bar (4500 psi)     |
| Maximum pressure (T port)       | 210 bar (3,000 psi)   | 160 bar (2300 psi)     |
| Minimum ambient temperature     | -20 deg C (-4 deg F)  | -20 deg C (-4 deg F)*  |
| Maximum ambient temperature     | +70 deg C (158 deg F) | +70 deg C (158 deg F)* |
| Rated voltage                   | 12 VDC or 24 VDC      | 12 VDC or 24 VDC       |
| Power                           | 30W                   | 30W*                   |

DG4V — 5M — \* \* — M — KUP5 — H 6 — 21

1   
 2 3   
 4   
 5 6   
 7

#### 1 Valve size

**5M** CETOP 5 / NG10

#### 2 Spool type

Standard spools  
per DG4V5 catalog

#### 3 Spool spring arrangement

Standard  
arrangements per  
DG4V5 catalog

#### 4 Coil type

**KUP5** Integral Deutsch  
connector, male  
DT04-2P. Mating  
connector DT06-2S

#### 5 Coil rating

**G** 12V DC  
**H** 24V DC

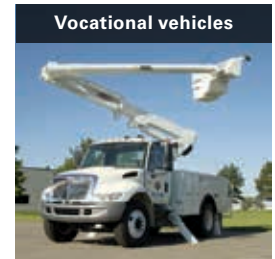
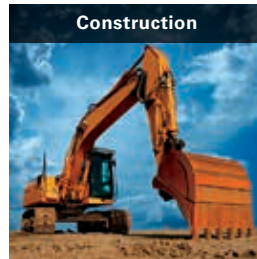
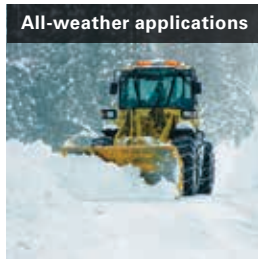
#### 6 Tank pressure

**6** 160 bar (2300psi)

#### 7 Design number

**21** 21<sup>st</sup> design

Note: For complete model code,  
please refer Eaton standard  
DG D03/NG6 catalog



**Eaton**  
1000 Eaton Boulevard  
Cleveland, OH 44122  
United States  
Eaton.com

© 2016 Eaton  
All Rights Reserved  
Printed in USA  
Document No. E-VLDI-BB002-E1  
August 2016

Eaton is a registered trademark.  
All other trademarks are property  
of their respective owners.