

Pressure Relief

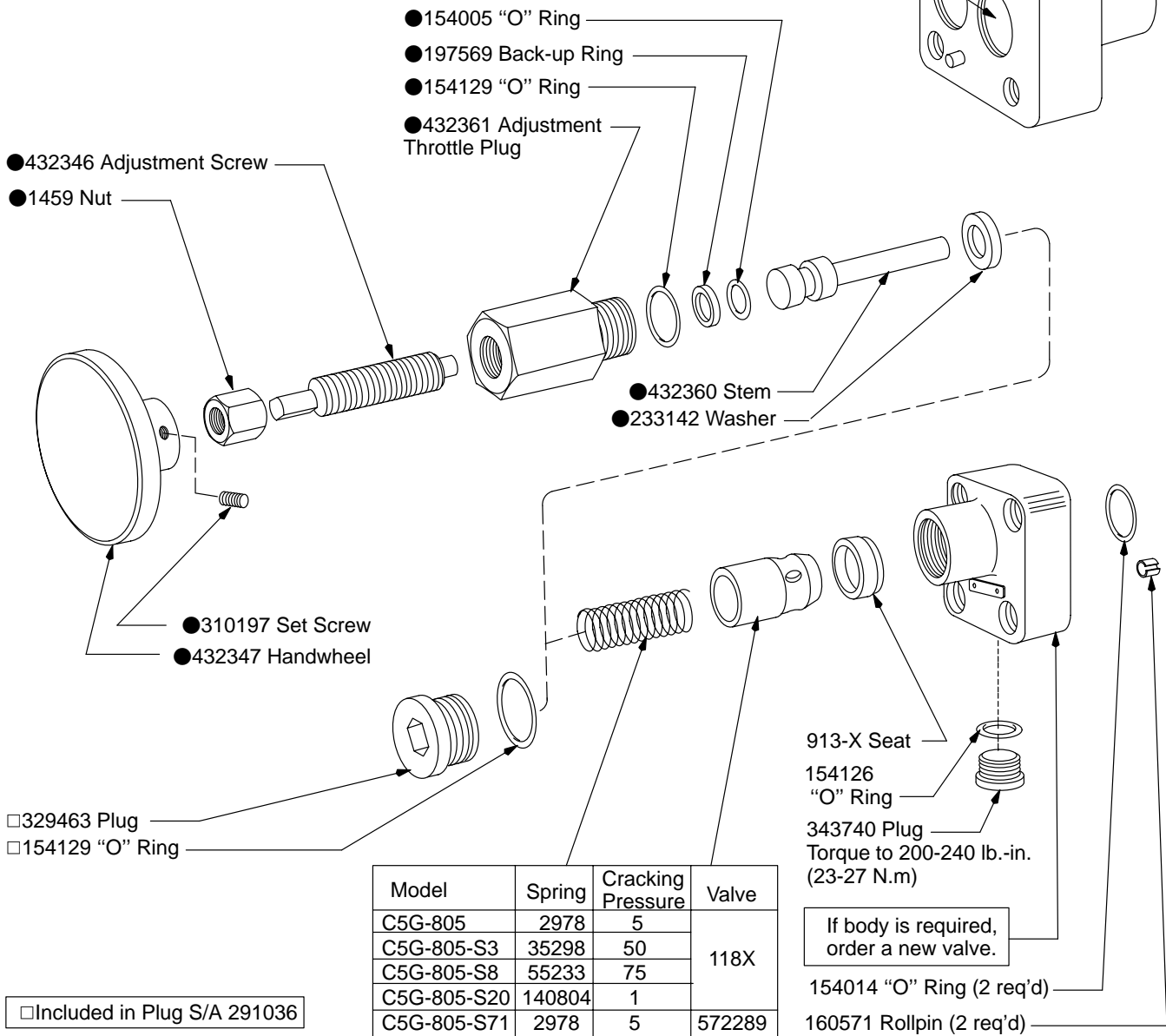


3/8 Inch Manifold Mounted Check Valve

C5G-805-(S*)

● These parts used on -S71 models only.

CAUTION
Be certain the valve is connected properly. Flow must enter here.



For satisfactory service life of these components, use full flow filtration to provide fluid which meets ISO cleanliness code 16/13 or cleaner. Selections from pressure, return, and in-line filter series are recommended.