

# Troubleshooting flow charts

## CM-52

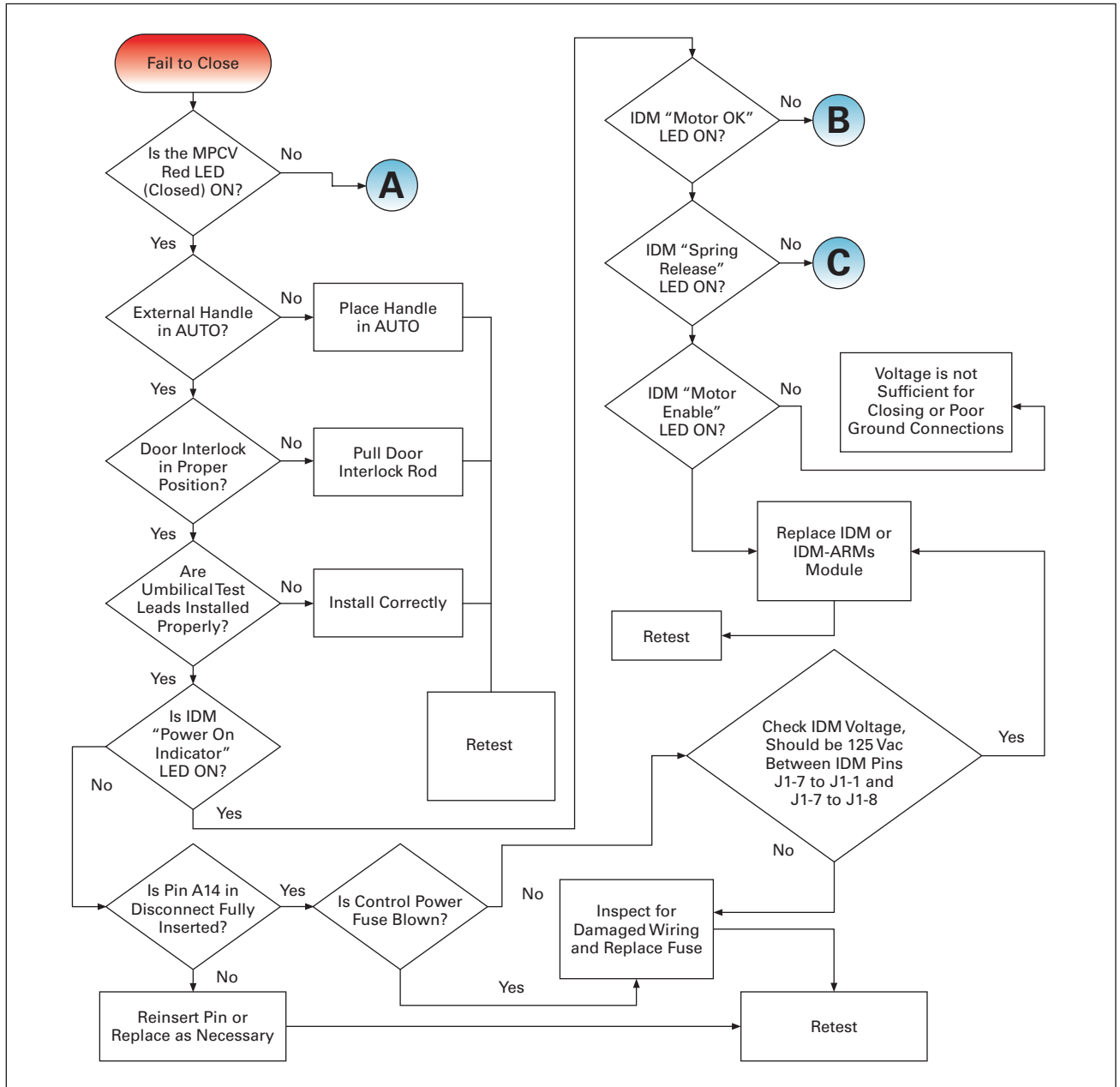


Figure 1. Fail to Close

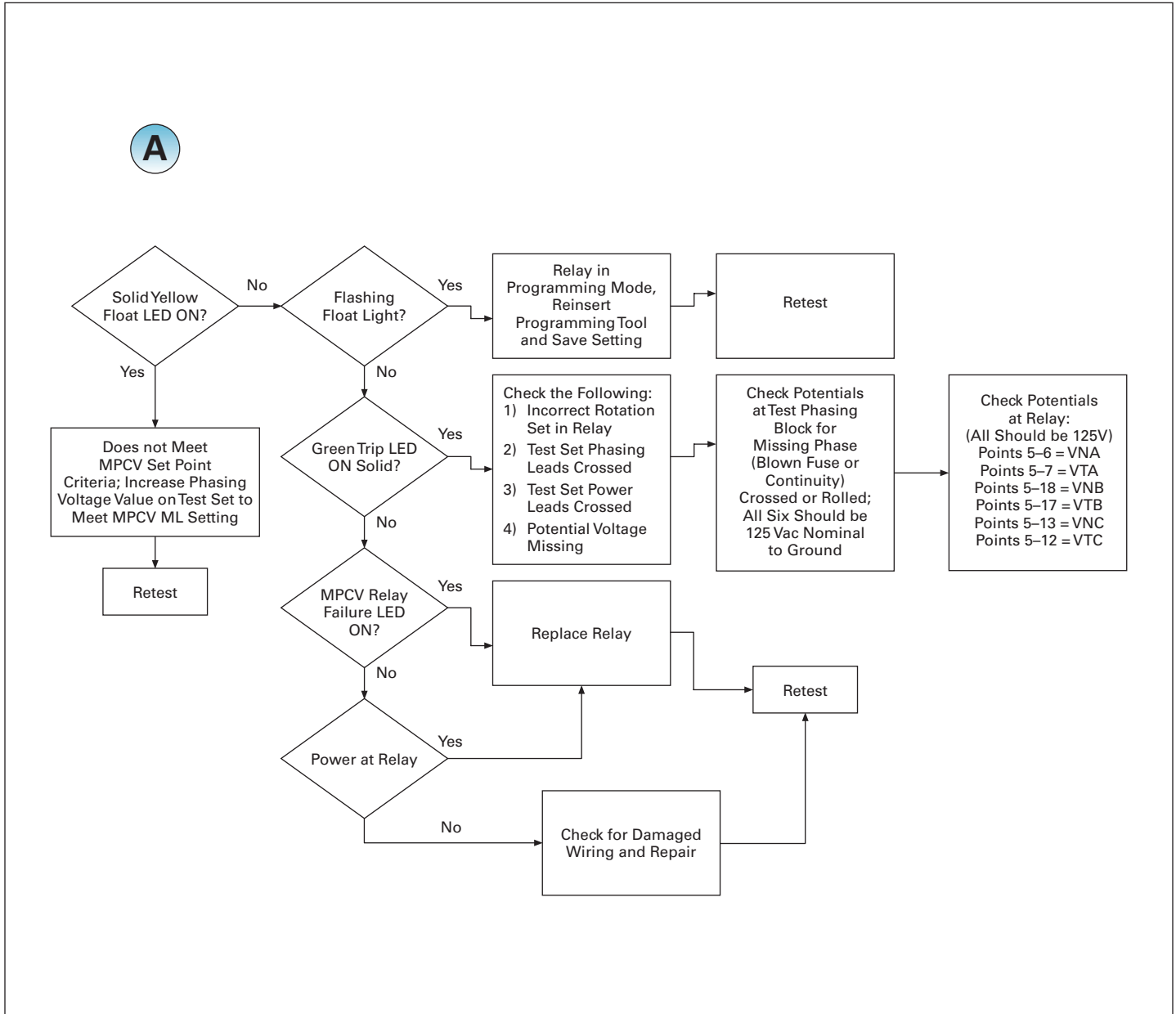


Figure 2. Solid Yellow Float LED ON

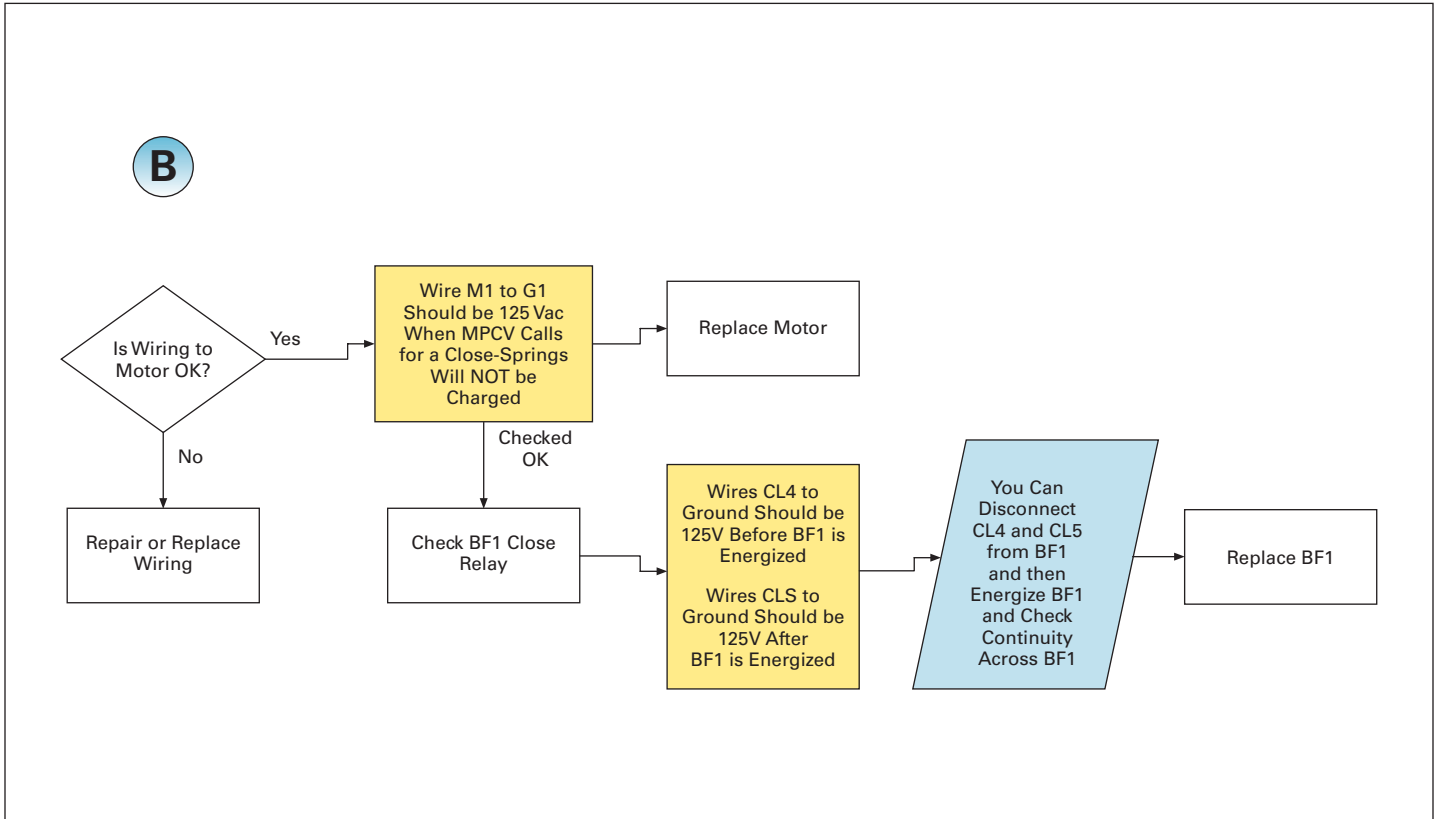


Figure 3. Is Wiring to Motor OK?

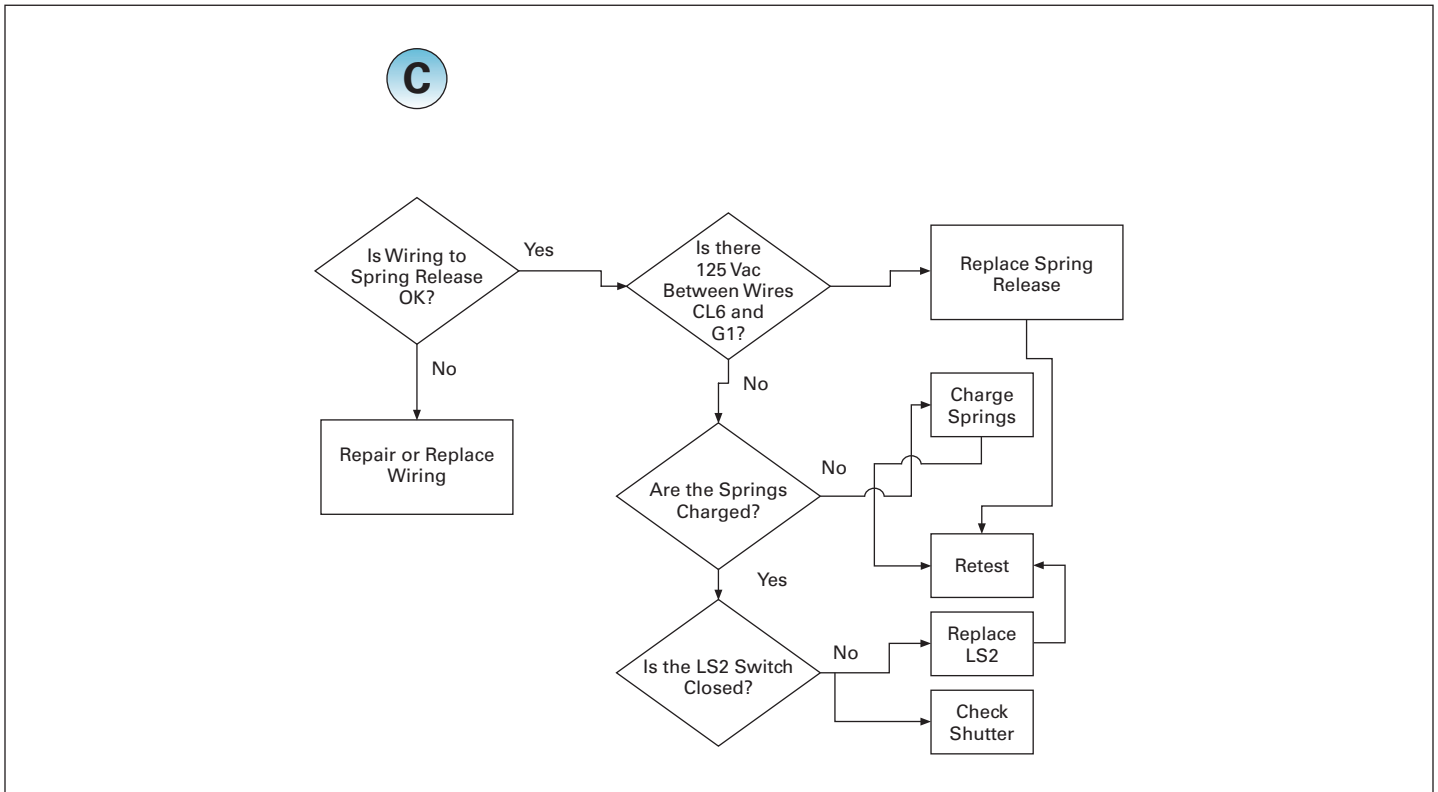


Figure 4. Is Wiring to Spring Release OK?

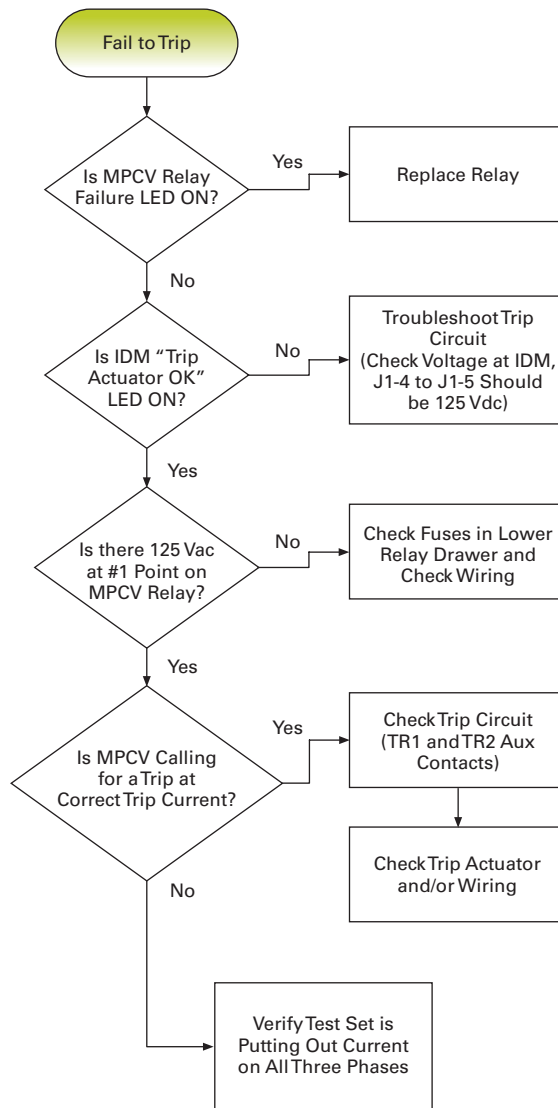


Figure 5. Fail to Trip

**Remote racking**

NOTE: Breaker MUST be OPEN and the manual protector handle in the OPEN position for remote racking operation.

NOTE: The 5/16 Allen adapter must be used for cranking manually from the TEST position to the DISCONNECTED position and from the DISCONNECTED position to the TEST position. You will need to push in to disengage the clutch; make sure you re-engage the clutch after you reach the TEST position.

NOTE: The manual crank is not designed to be used from the TEST position to the CONNECT position.

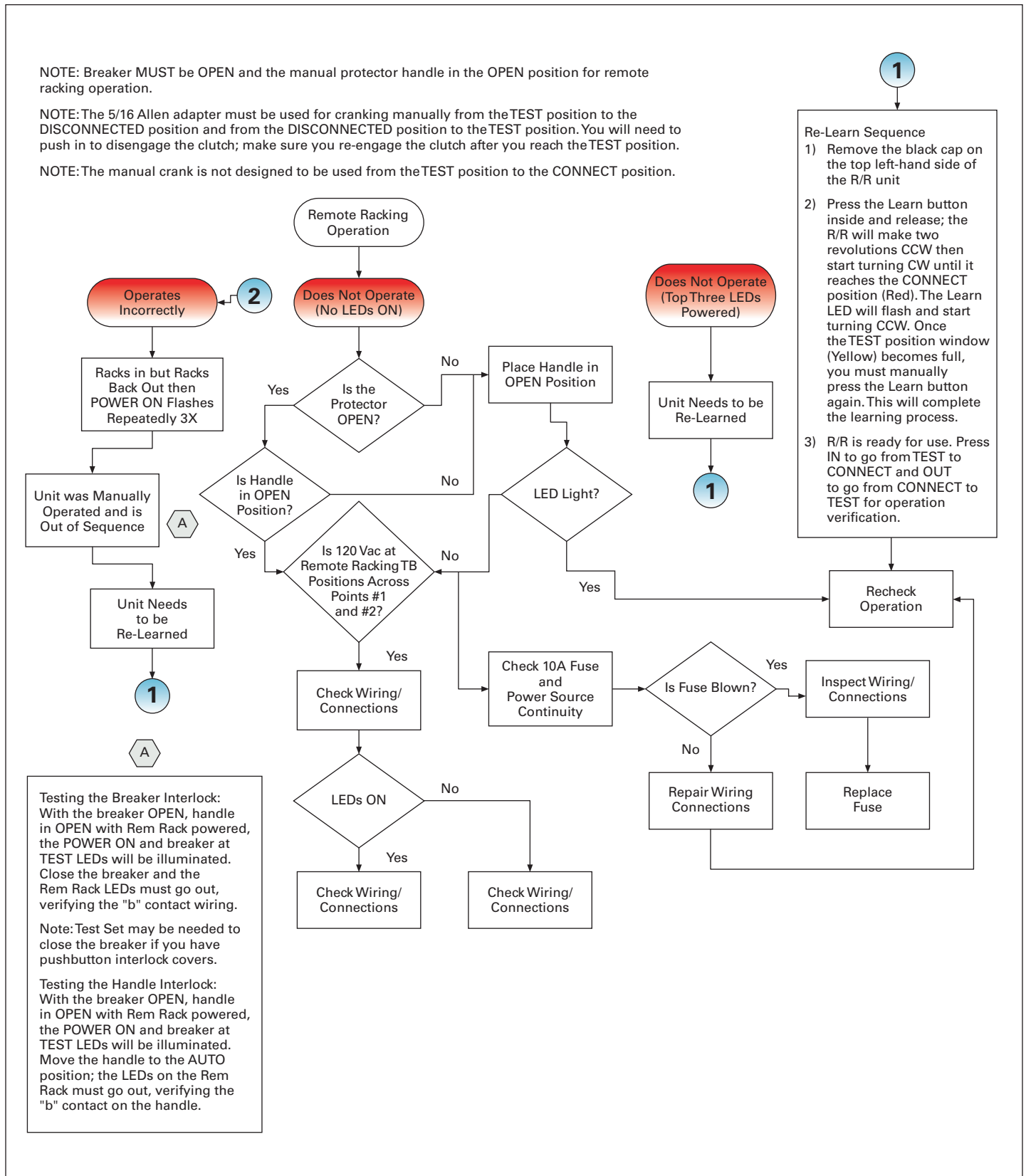
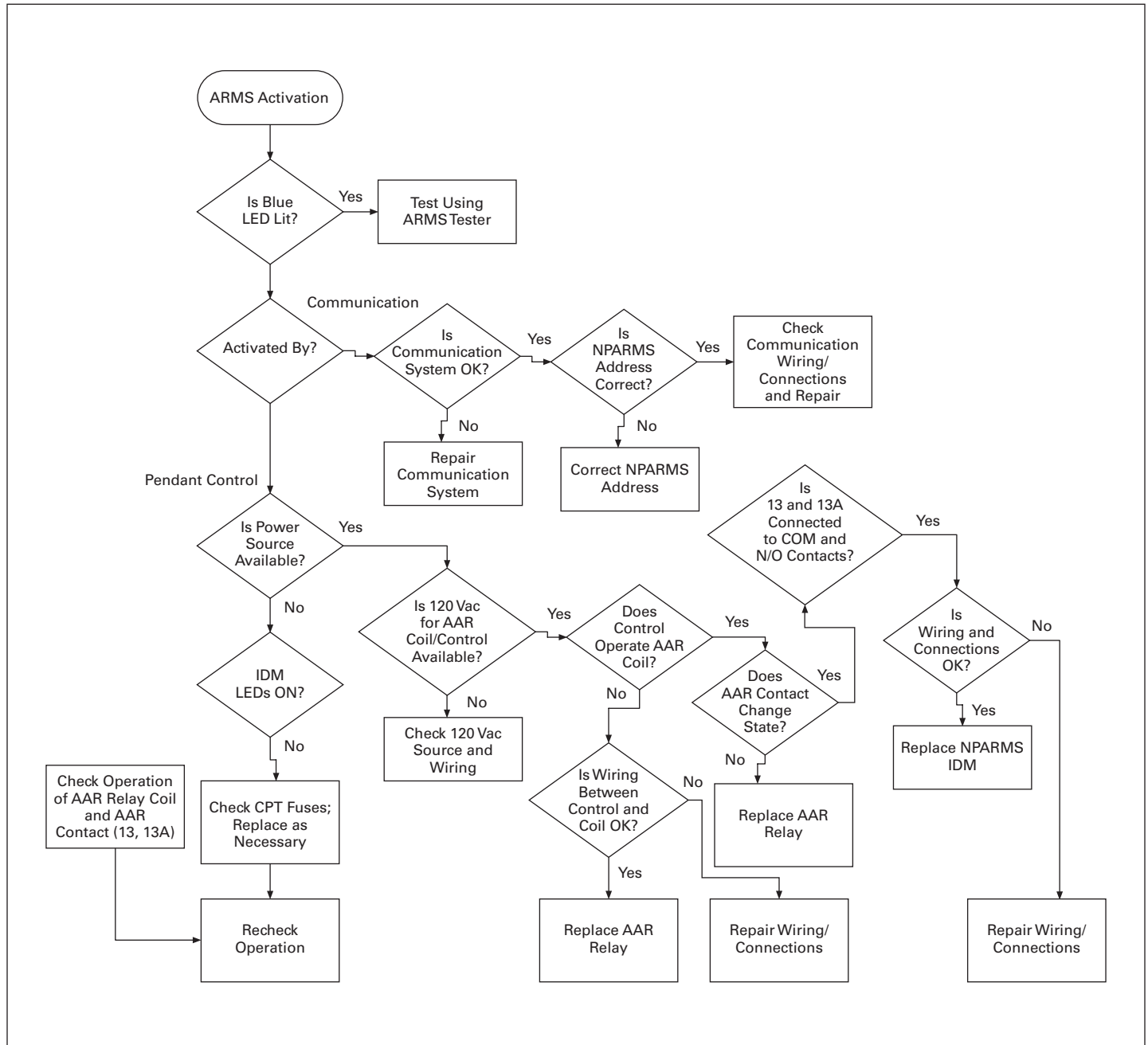


Figure 6. Remote Racking Operation

**NPARMS**



**Figure 7. ARMS Activation**

**Eaton**  
 1000 Eaton Boulevard  
 Cleveland, OH 44122  
 United States  
 Eaton.com

© 2013 Eaton  
 All Rights Reserved  
 Printed in USA  
 Publication No. AP02405001E / Z14472  
 November 2013



Eaton is a registered trademark.

All other trademarks are property of their respective owners.