



Taking substation automation to the next level

As the fourth generation of SMP™ gateway, Eaton's Cooper Power™ series SG-4250 leverages more than 20 years of hardware and software development, and delivers one of the most advanced substation automation solutions on the market. Flexible, scalable, evolvable, the SMP SG-4250 is a Smart Grid enabler.

Over the last decade, the Substation Modernization Platform™ (SMP™) Gateway has been recognized as one of the most efficient and reliable substation gateways on the market. It has been used successfully in thousands of substations to perform data acquisition and distribution, protocol translation and to provide secure remote access to substation intelligent electronic devices (IEDs).

Simplify SCADA operational activities

- Create a homogenous system with a single entry point for each substation
- Access IED data with more than 80 protocols supported
- Integrate the latest IEC 61850 IEDs with legacy RTUs, IEDs and PLCs
- Manage alarms, visualize data and control substation devices directly from the new SMP Gateway local or remote interface

- Access substation single-line diagrams directly from a touch screen monitor or remotely using a web browser
- Manage network segments—up to ten Ethernet ports with multi-homing and VLAN tag support
- Reduce overall network bandwidth usage
- Synchronize IEDs using IRIG-B and PTP—IEEE Std 1588™-2008 standard

Add intelligent controls to your substation equipment

- Extend the capabilities of legacy devices with high-level functions such as binary debouncing and grouped controls
- Create sophisticated automation scripts, such as automatic load and feeder management, using the built-in IEC 61131-5 compliant Soft PLC engineer

Access non-operational data securely

- Passthrough to any IED
- Extract data for planning, maintenance, engineering, and fault analysis
- Use the SMP Gateway as a local repository for event/DFR files

Strengthen Cyber-Security

- Create a NERC CIP-compliant electronic perimeter to protect substation devices
- Secure SCADA protocols using TLS and X.509 certificates as per IEC 62351-3
- Implement DNP3 Secure Authentication V5 as per IEC 62351-5
- Protect your system with a built-in firewall and integrity check



Powering Business Worldwide



Provides data acquisition and distribution, protocol translation, and secure remote access to substation IEDs

The SMP SG-4250 is the most robust SMP Gateway platform available

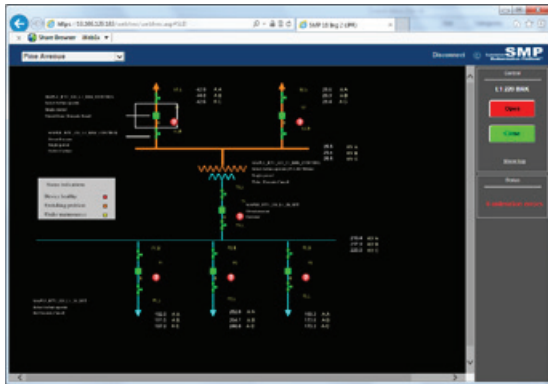
- Meet all IEEE® and IEC requirements for substation-grade equipment
- Provide high data availability with built-in redundancy schemes
- Wurdtech's Achilles® Communications Level 1 certified
- NESSUS tested

A system designed with efficiency in mind

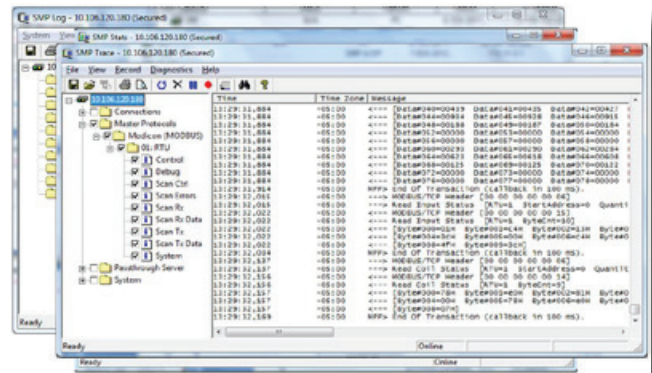
- Template driven configuration tool and import/export capabilities
- Extensive commissioning and debugging tools—including a protocol analyzer
- Secure remote maintenance
- High performance system for the most demanding automation projects

A complete substation automation solution

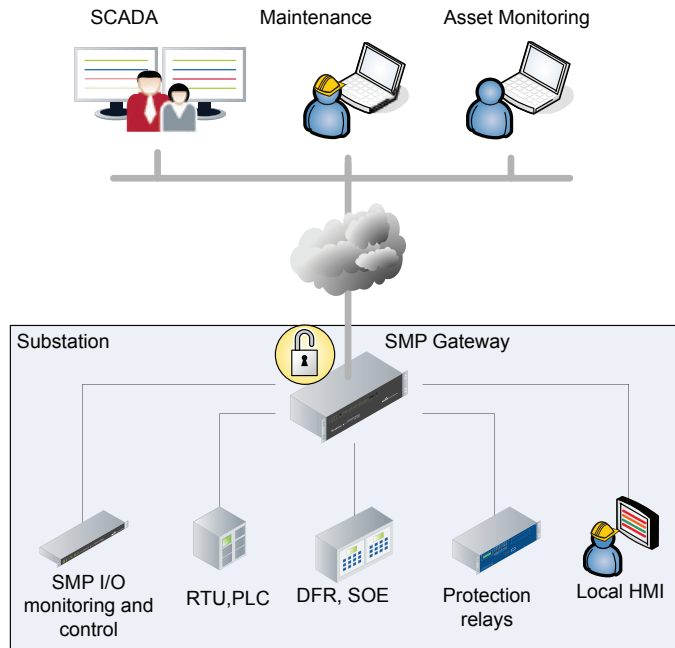
- Upgrade your substation and keep your legacy device
- Reduce substation downtime
- Improve network reliability
- Reduce total cost of ownership
- Leverage the SMP SG-4250 gateway capabilities and also use it as a substation HMI



Local and remote single-line diagram capabilities.



Embedded protocol analyzer.



Eaton
1000 Eaton Boulevard
Cleveland, OH 44122
United States
Eaton.com

Electrical Automation Solutions Division
505 North Highway 169, Suite 1200
Minneapolis, MN 55441-6449
Eaton/cooperpowerseries.com

© 2015 Eaton
All Rights Reserved
Printed in USA
Publication No. PA912004EN
Supersedes B1120-14045
June 2015

Eaton, Cooper Power, Substation Modernization Platform and SMP are valuable trademarks of Eaton in the U.S. and other countries. You are not permitted to use the Eaton Trademarks without the prior written consent of Eaton.

Achilles is a registered trademark of Wurdtech Security Technologies Inc.

IEEE Std 1588™-2008 standard is a trademark of the Institute of Electrical and Electronics Engineers, Inc., (IEEE). This publication/product is not endorsed or approved by the IEEE.

All other trademarks are property of their respective owners.



For Eaton's Cooper Power series product information, call 1-877-277-4636 or visit: Eaton.com/cooperpowerseries