



Powering Business Worldwide

Illustrated Parts List

ZY05272

November 2015

Contents

| | |
|---|----|
| How To Use The Illustrated Parts List | 3 |
| CLUTCH ASSY. | 4 |
| FRONT BEARING COVER ASSY. | 6 |
| FRONT CASE ASSY..... | 7 |
| INPUT SHAFT ASSY..... | 9 |
| LAYSHAFT ASSY. | 10 |
| LRC ASSEMBLY | 12 |
| MAINSHAFT ASSY..... | 14 |
| REAR CASE ASSY. | 17 |
| REVERSE IDLER SHAFT..... | 19 |
| SELECTOR ASSY. | 20 |
| SPEEDO HOUSING..... | 22 |

How To Use The Illustrated Parts List

The information contained in this document is subject to frequent updates. Therefore, for the latest information available, please visit the interactive Electronic Parts Catalog at <http://www.eaton.com/EatonCom/TruckEurope/TruckEurope/index.htm>

Model Designation and Nomenclature

- For information regarding Model Designation and Nomenclature, visit <http://www.eaton.com/EatonCom/TruckEurope/TruckEurope/index.htm>

Kits and Assemblies (K/A's)

- Kits or Assemblies contain groups of individual or assembled parts specially developed for optimal replacement during repair.
- Kits and Assemblies are shown with applicable parts groupings in the parts listings.

Identifying Kits and Assemblies

A- Part numbers beginning with the letter 'A' are pre-assembled Production Assemblies

K- Part numbers beginning with the letter 'K' are kits that are not assembled

T - Part numbers beginning with the letter 'T' are kits that are not assembled

S- Part numbers beginning with the letter 'S' are pre-assembled Service Assemblies

- Note: Some Production Assemblies do not begin with a letter prefix (Midrange only).

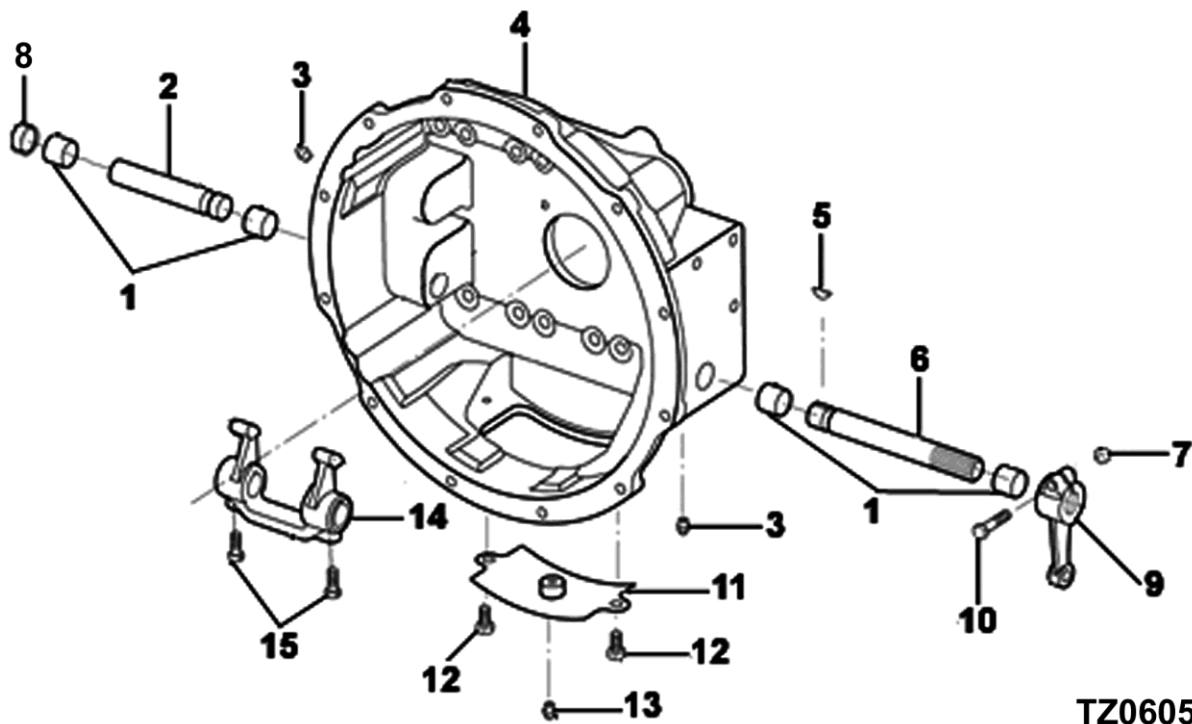
Illustrations

- Illustrations show parts in assembly groups.
- Item numbers on illustrations correspond with parts listings adjacent to the illustration.(on the same or adjacent page)
- Notes are included on illustrations where additional information is needed.

Parts Listing

Parts listings are defined by parts groupings and are broken down by service assemblies. Parts listings identify a part for servicing with the following categories

- **ITEM** - Number corresponds to number on illustration for part identification.
- **CURRENT PART** - part number of the part available for service.
- **DESCRIPTION** - part name or description.
- **REPLACED PART** - number of replaced part.
- **QTY** - Quantity required for assembly.
- **NOTES** - unique characteristics or requirements.
- **KITS / ASSYS WHERE NEEDED** - kits or assemblies that contain the part.

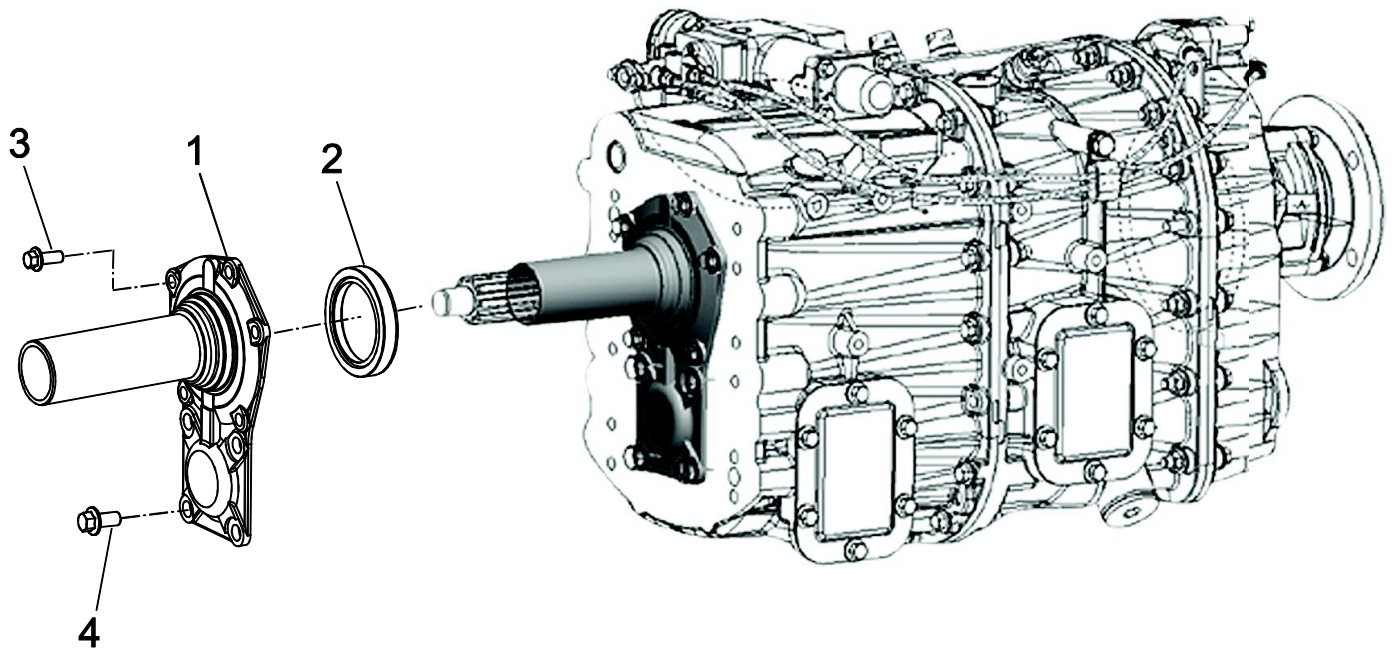


TZ0605

CLUTCH ASSY.

| Item | Current Part | Description | Replaced Part | Qty. | Notes | Kits/Assys Where Needed |
|------|--------------|-----------------------------|---------------|------|----------------------------|-------------------------|
| 0 | U8882228 | CLUTCH HOUSING ASSY. | | 1 | | |
| 0 | U8882557 | CLUTCH RELEASE LEVER ASSY | | 1 | INCLUDES ITEM NO.7, 9 & 10 | |
| 1 | 12815 | BUSHING | | 4 | | |
| 2 | F96002 | CLUTCH CROSS SHAFT | | 1 | | |
| 3 | 4759 | FITTING GREASE STRAIGHT 1/8 | | 2 | | |
| 4 | 8882202 | CLUTCH HOUSING | | 1 | | |
| 5 | X-6-11 | WOODRUFF KEY | | 1 | | |
| 6 | 8882604 | CLUTCH CROSS SHAFT | | 1 | | |
| 7 | GMX-9-1005 | NUT | | 1 | M10X1.5 | |
| 8 | GX8870278 | CUP PLUG | | 1 | | |
| 9 | 8882536 | LEVER CLUTCH RELEASE | | 1 | | |
| 10 | GMX-8-1086 | BOLT FLANGE HEAD | | 1 | M10X50 | |
| 11 | 8875171 | COVER PLATE | | 1 | | |
| 12 | GMX-8- | SCREW | | 2 | M12X25 HEX FLG HD | |

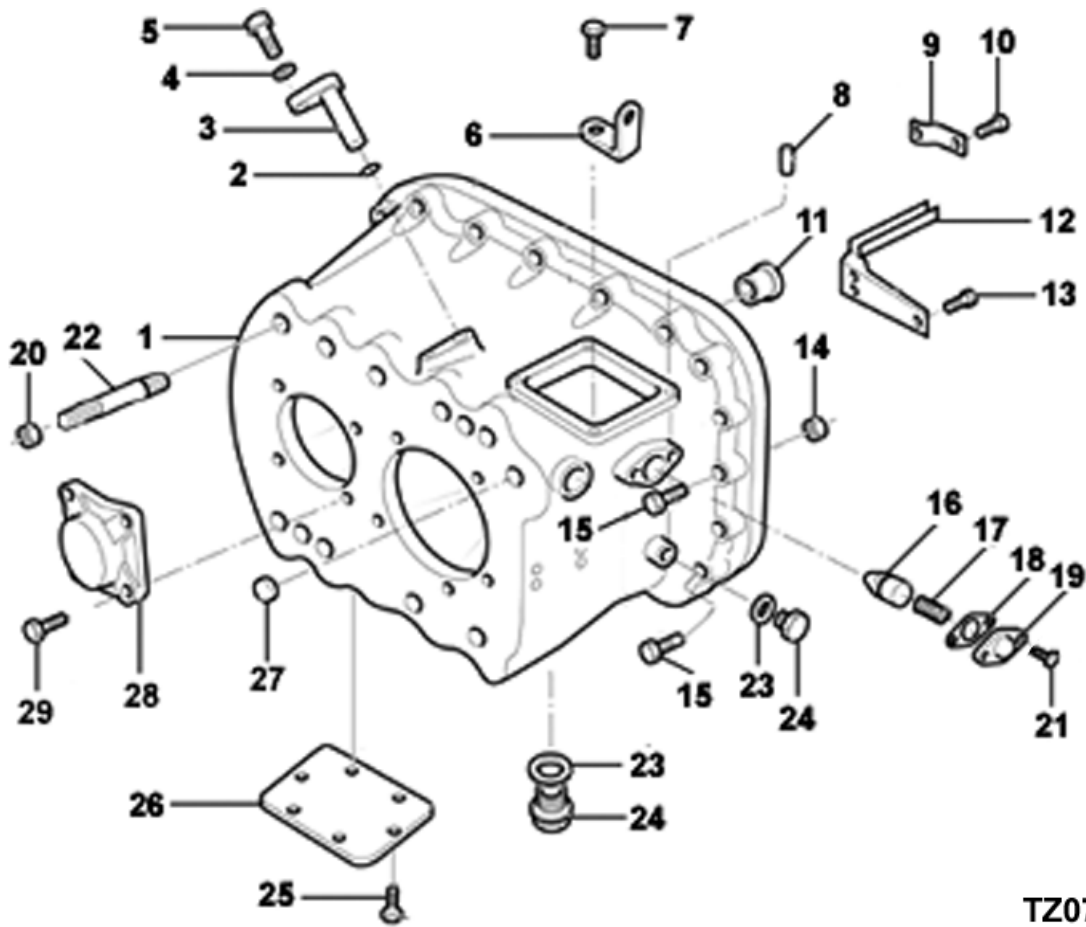
| Item | Current Part | Description | Replaced Part | Qty. | Notes | Kits/Assys Where Needed |
|------|--------------|---------------------|---------------|------|------------|-------------------------|
| | 1088 | | | | | |
| 13 | GX2013517 | PIPE PLUG | | 1 | 1/8 | |
| 14 | 12817 | YOKE CLUTCH RELEASE | | 1 | | |
| 15 | X-7-603 | BOLT | | 2 | 3/8 HEX HD | |



PU0144

FRONT BEARING COVER ASSY.

| Item | Current Part | Description | Replaced Part | Qty. | Notes | Kits/Assys Where Needed |
|------|--------------|-------------|---------------|------|-------------------|-------------------------|
| 1 | 8883037 | FRONT COVER | | 1 | | |
| 2 | X8870760 | OIL SEAL | | 1 | | |
| 3 | GMX-8-1089 | SCREW | | 5 | M10X25 HEX FLG HD | |
| 4 | GMX-8-1240 | SCREW | | 4 | M12X25 HEX FLG HD | |

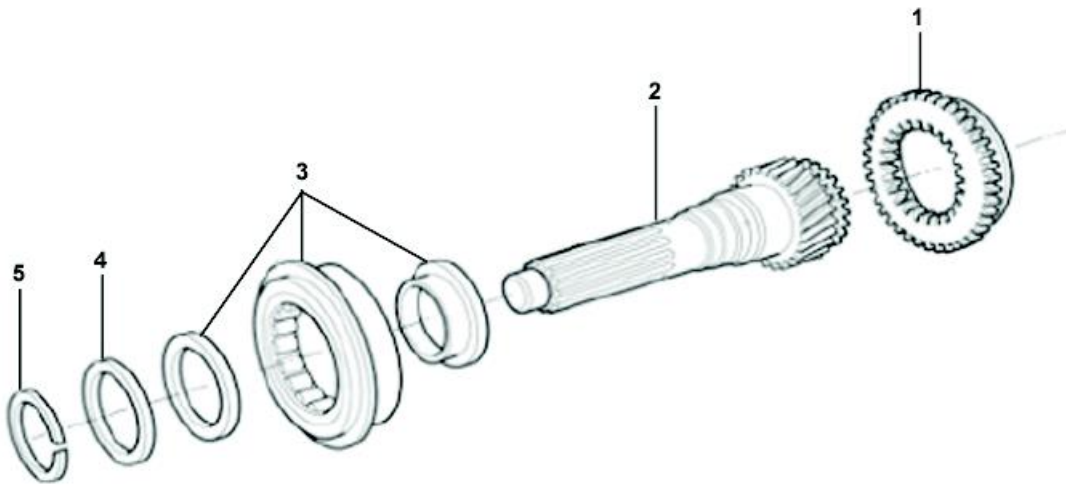


TZ0771

FRONT CASE ASSY

| Item | Current Part | Description | Replaced Part | Qty. | Notes | Kits/Assys Where Needed |
|------|--------------|------------------------|---------------|------|-------------------|-------------------------|
| 0 | U8882265 | FRONT CASE ASSY. | | 1 | | |
| 1 | 8881834 | FRONT CASE (OVERDRIVE) | | 1 | | |
| 2 | X8877743 | O-RING | | 2 | 11.1 ID X 1.6 DIA | |
| 3 | GX8872917 | ROTATION PIN O/D FORK | | 2 | | |
| 4 | GMX-3-0801 | WASHER SPRING | | 2 | M8 | |
| 5 | GMX-8-0811 | SCREW | | 2 | M8X20 | |
| 6 | GX20815 | LIFTING EYE | | 1 | | |
| 7 | GMX-8-1091 | SCREW | | 4 | M10X30 HEX FLG HD | |
| 8 | X8870542 | DOWEL | | 2 | 8,0 DIA X 16 | |
| 9 | 8877430 | OIL TROUGH | | 1 | | |

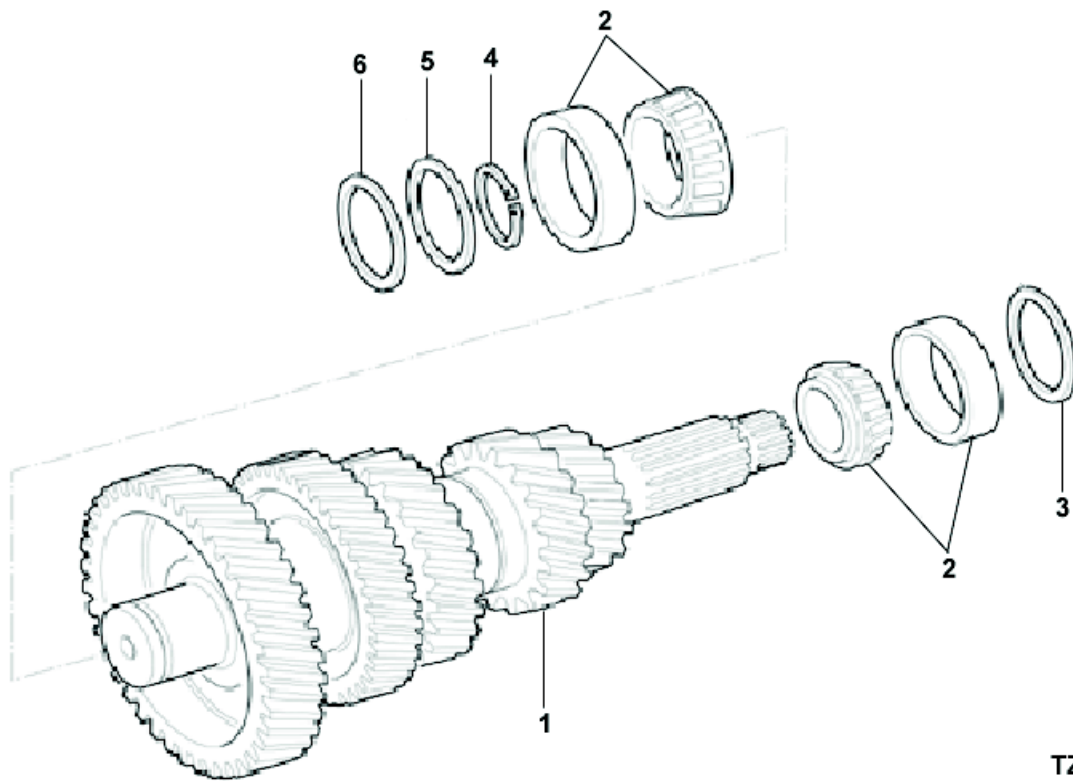
| Item | Current Part | Description | Replaced Part | Qty. | Notes | Kits/Assys Where Needed |
|------|--------------|---------------------------|---------------|------|---------------------------------------|-------------------------|
| 10 | X8872604 | SCREW | | 2 | | |
| 11 | 8883756 | BUSH | 8882415 | 1 | FOR MAIN SELECTOR SHAFT | |
| 12 | 8877431 | OIL TROUGH | | 1 | | |
| 13 | 8874473 | SCREW | | 3 | | |
| 14 | GMX-9-1005 | NUT | | 15 | M10X1.5 | |
| 15 | GMX-8-10110 | BOLT | | 1 | DETENT COVER SIDE | |
| 15 | GMX-8-1079 | BOLT | | 3 | M10X40 | |
| 15 | GMX-8-1080 | BOLT | | 13 | M10X58 | |
| 15 | GMX-8-1094 | BOLT | | 1 | M10X55 HEX FLG HD, MAGNETIC PLUG SIDE | |
| 16 | 8873654 | PLUNGER-NEUTRAL | | 1 | | |
| 17 | 8871098 | SPRING COMPRESSION | | 1 | | |
| 18 | 8870590 | GASKET | | 1 | | |
| 19 | GX8870259 | DETENT COVER | | 1 | | |
| 20 | GMX-9-1204 | NUT | | 12 | M12 | |
| 21 | GMX-8-0819 | SCREW | GMX-8-0801 | 2 | M8 X 16 | |
| 22 | GX8873931 | STUD | | 10 | M12X45 LONG | |
| 22 | GX8874699 | STUD | | 2 | M12X65 LONG | |
| 23 | X8880519 | WASHER-FILL/DRAIN FL | | 2 | | |
| 24 | GX8874941 | MAGNETIC PLUG | | 2 | M24 | |
| 25 | GMX-8-1088 | SCREW | | 6 | M12X25 HEX FLG HD | |
| 26 | GX8881616 | PTO PROVISION COVER | | 1 | | |
| 27 | GX8870278 | CUP PLUG | | 1 | | |
| 28 | GX8880554 | BEARING COVER LAYSHAFT | | 1 | | |
| 29 | GMX-8-1240 | SCREW | | 4 | M12X25 HEX FLG HD | |



TZ0019

INPUT SHAFT ASSY.

| Item | Current Part | Description | Replaced Part | Qty. | Notes | Kits/Assys Where Needed |
|------|--------------|----------------------|---------------|------|----------------|-------------------------|
| 0 | ZU8883481 | INPUT SHAFT ASSY. | | 1 | | |
| 1 | 8877318 | SYNCHRO FLANGE | | 1 | | |
| 2 | Z8883480 | INPUT SHAFT | | 1 | | |
| 3 | X8872593 | INPUT SHAFT BEARING | | 1 | | |
| 4 | 8877692 | SPACER - GRADED 3.10 | | 1 | PACK: U8877691 | |
| 4 | 8877693 | SPACER - GRADED 3.15 | | 1 | PACK: U8877691 | |
| 4 | 8877694 | SPACER - GRADED 3.20 | | 1 | PACK: U8877691 | |
| 4 | 8877695 | SPACER - GRADED 3.25 | | 1 | PACK: U8877691 | |
| 4 | 8877696 | SPACER - GRADED 3.30 | | 1 | PACK: U8877691 | |
| 4 | 8877697 | SPACER - GRADED 3.35 | | 1 | PACK: U8877691 | |
| 4 | 8877698 | SPACER - GRADED 3.40 | | 1 | PACK: U8877691 | |
| 4 | 8877699 | SPACER - GRADED 3.45 | | 1 | PACK: U8877691 | |
| 4 | 8877700 | SPACER - GRADED 3.50 | | 1 | PACK: U8877691 | |
| 4 | U8877691 | SPACER - GRADED PACK | | 1 | | |
| 5 | X8877706 | CIRCLIP | | 1 | | |

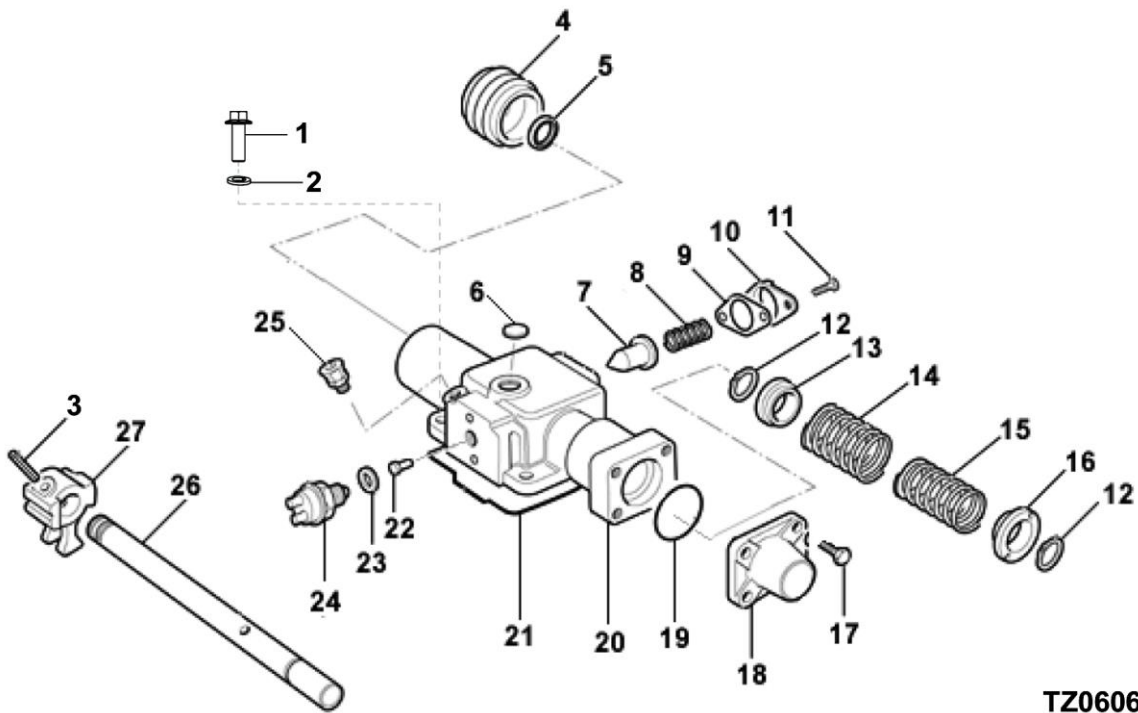


TZ0023

LAYSHAFT ASSY.

| Item | Current Part | Description | Replaced Part | Qty. | Notes | Kits/Assys Where Needed |
|------|--------------|-----------------------------|---------------|------|-------|-------------------------|
| 1 | U8881272 | LAYSHAFT ASSY. | | 1 | | |
| 2 | X8875587 | BEARING ASSEMBLY | | 2 | | |
| 3 | 8872210 | DISTANCE PIECE | | 1 | | |
| 4 | U8877534 | CIRCLIP GRADED PACK | | 1 | | |
| 4 | X8870370 | GR.C/CLIP 40 DIA. X 2.12 MM | | 1 | | |
| 4 | X8870371 | GR.C/CLIP 40 DIA. X 2.07 MM | | 1 | | |
| 4 | X8870372 | GR.C/CLIP 40 DIA X 2.02 MM | | 1 | | |
| 4 | X8871536 | GR.C/CLIP 40 DIA. X 1.97 MM | | 1 | | |
| 4 | X8871537 | GR.C/CLIP 40 DIA. X 1.92 MM | | 1 | | |
| 4 | X8871538 | GR.C/CLIP 40 DIA. X 1.87 MM | | 1 | | |
| 4 | X8871539 | GR.C/CLIP 40 DIA. X 1.82 MM | | 1 | | |

| Item | Current Part | Description | Replaced Part | Qty. | Notes | Kits/Assys Where Needed |
|------|--------------|--------------------------------|---------------|------|---------|-------------------------|
| 4 | X8871540 | GR.C/CLIP 40 DIA. X 1.77 MM | | 1 | | |
| 5 | F88891 | SHIM | | 1 | S=0,051 | |
| 5 | F88892 | SHIM | | 1 | S=0,127 | |
| 5 | F88893 | SHIM | | 1 | S=0,254 | |
| 5 | F88894 | SHIM | | 1 | S=0,508 | |
| 5 | U8877535 | SHIM PACK | | 1 | | |
| 5 | X8882272 | SHIM | | 1 | S=1,200 | |
| 6 | 8875879 | SPACER | | 1 | | |

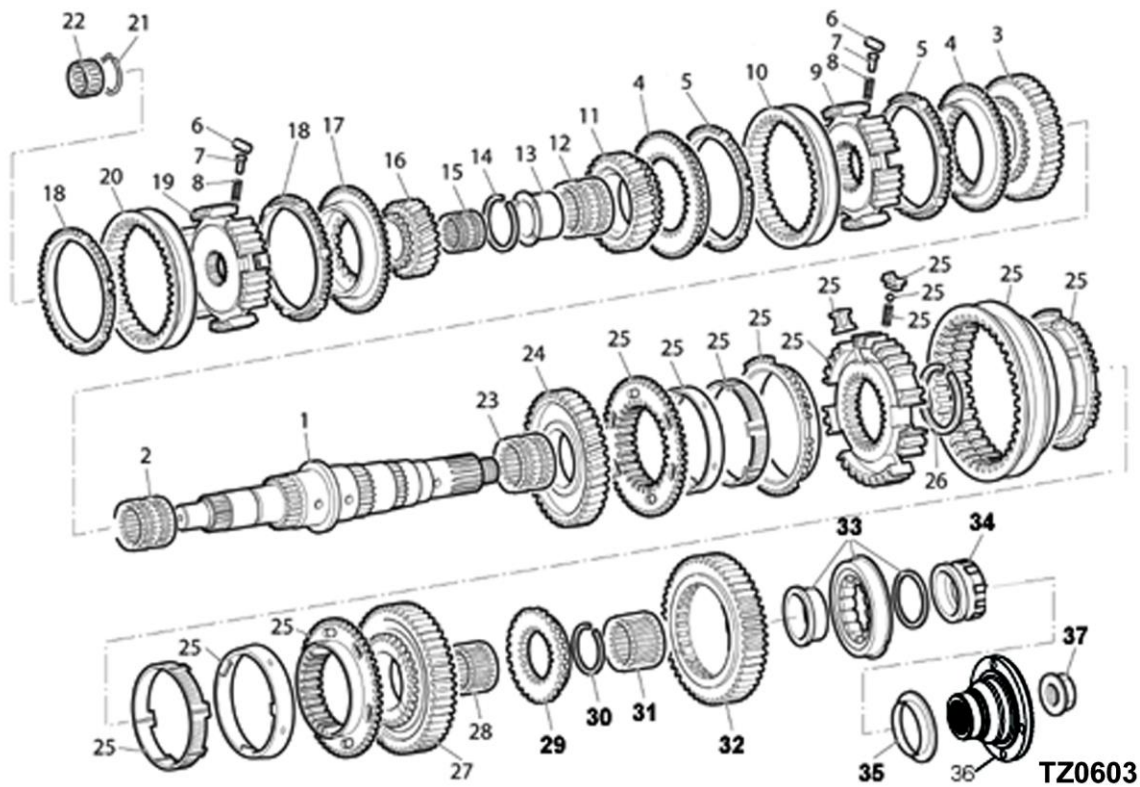


TZ0606

LRC ASSEMBLY

| Item | Current Part | Description | Replaced Part | Qty. | Notes | Kits/Assys Where Needed |
|------|--------------|-------------------------|---------------|------|-------------------|-------------------------|
| 0 | U8881056 | LRC ASSEMBLY | | 1 | | |
| 1 | GMX-8-1091 | SCREW | | 4 | M10X30 HEX FLG HD | |
| 2 | GMX-3-1001 | SPRING WASHER | | 4 | M10 | |
| 3 | X8871378 | DOWEL | | 1 | 10,0 DIA X 44 | |
| 4 | X8875259 | BOOT | | 1 | | |
| 5 | X8881481 | OIL SEAL | | 1 | | |
| 6 | GX8871486 | EXPANSION PLUG | | 1 | | |
| 7 | 8875415 | PLUNGER - DETENT | | 1 | | |
| 8 | 8880622 | SPRING COMPRESSION | | 1 | | |
| 9 | 8870590 | GASKET | | 1 | | |
| 10 | GX8870259 | DETENT COVER | | 1 | | |
| 11 | GMX-8-0848 | SCREW | | 2 | | |
| 12 | X8874450 | CIRCLIP | | 2 | 25.DIA | |
| 13 | 8876566 | SPRING RETAINER-BOOSTER | | 1 | | |

| Item | Current Part | Description | Replaced Part | Qty. | Notes | Kits/Assys Where Needed |
|------|--------------|----------------------|---------------|------|-------|-------------------------|
| 14 | 8879021 | SPRING | | 1 | | |
| 15 | 8876345 | BOOSTER SPRING | | 1 | | |
| 16 | 8876567 | SPRING RETAINER-BIAS | | 1 | | |
| 17 | GMX-8-0847 | SCREW | | 4 | | |
| 18 | 8880477 | END CAP | | 1 | | |
| 19 | X8880639 | O-RING | | 1 | | |
| 20 | U8880695 | LRC SUB ASSY. | | 1 | | |
| 21 | 8880638 | SEAL | | 1 | | |
| 22 | 8871375 | SWITCH ACTIVATOR PIN | | 1 | | |
| 23 | 5568510 | O-RING | | 1 | | |
| 24 | 8880315 | NEUTRAL SWITCH | | 1 | | |
| 25 | X2014210 | BREATHER | | 1 | | |
| 26 | 8877154 | SHIFT ROD | | 1 | | |
| 27 | 8877658 | INNER STRIKING LEVER | | 1 | | |

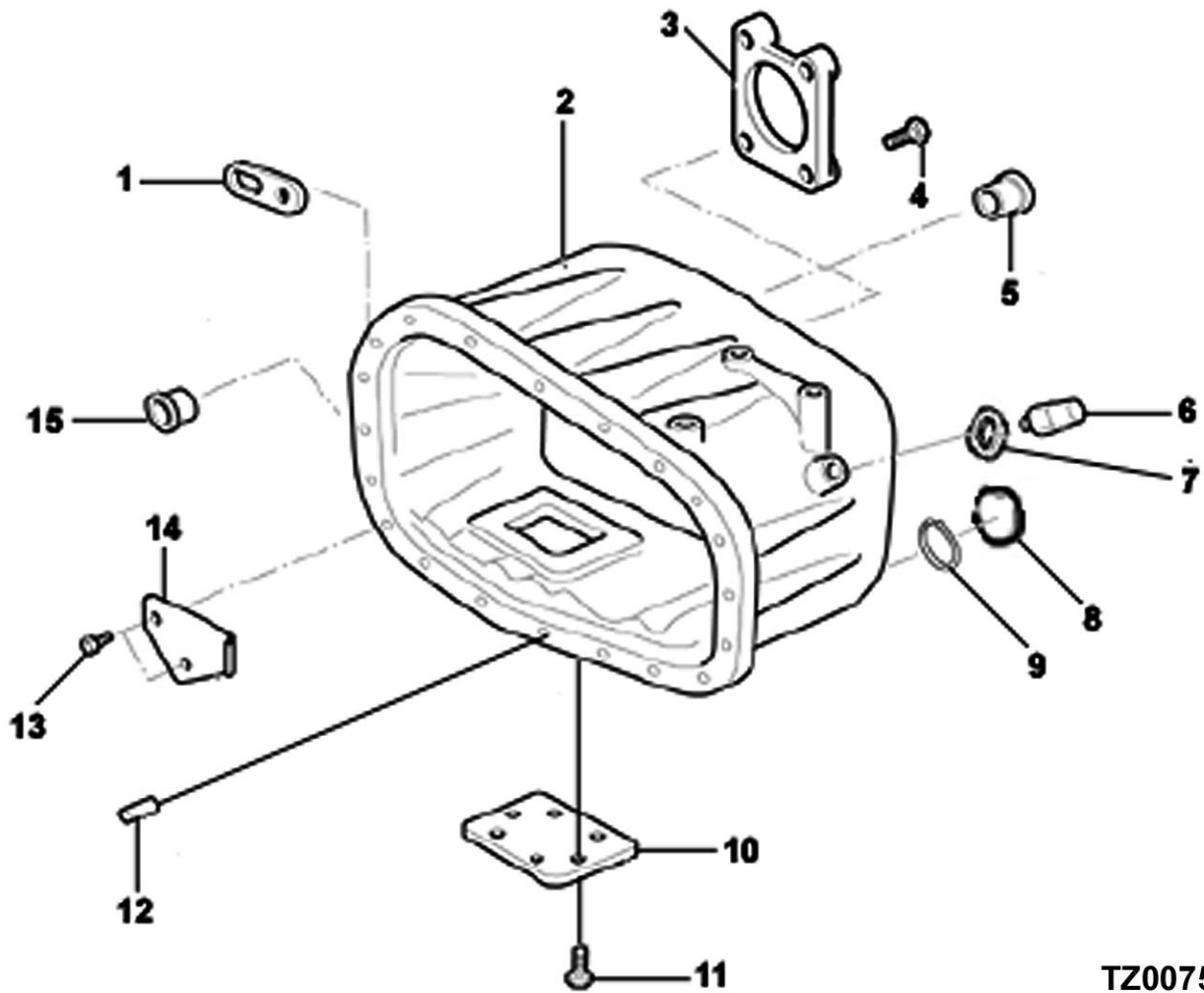


MAINSHAFT ASSY.

| Item | Current Part | Description | Replaced Part | Qty. | Notes | Kits/Assys Where Needed |
|------|--------------|--------------------------|---------------|------|-------|-------------------------|
| 0 | U8883295 | MAINSHAFT ASSY. | | 1 | | |
| 1 | 8876605 | MAINSHAFT | | 1 | | |
| 2 | X8872236 | NEEDLE ROLLER BRG. ASSY. | | 1 | | |
| 3 | 8880491 | GEAR MAINSHAFT 3RD | 8876905 | 1 | | |
| 4 | 8877316 | SYNCHRO FLANGE | | 2 | | |
| 5 | 8877313 | SYNCHRO RING | | 2 | | |
| 6 | X8870356 | ROLLER | | 6 | | |
| 7 | 8870352 | PLUNGER | | 6 | | |
| 8 | 8870444 | SPRING COMPRESSION | | 6 | | |
| 9 | 8875128 | FIXED HUB 3RD/4TH | | 1 | | |
| 10 | 8875374 | SLIDING SLEEVE | | 1 | | |
| 11 | 8876906 | GEAR MAINSHAFT 4TH | | 1 | | |
| 12 | X8872233 | NEEDLE ROLLER BRG. ASSY | | 1 | | |
| 13 | 8882868 | SLEEVE MAINSHAFT | | 1 | | |

| Item | Current Part | Description | Replaced Part | Qty. | Notes | Kits/Assys Where Needed |
|------|--------------|---------------------------------|---------------|------|----------------|-------------------------|
| | | BEARING | | | | |
| 14 | U8882558 | GRADED CIRCLIP PACK | | 1 | | |
| 14 | X8870534 | GR.CIRCLIP 46 DIA. X 2.10 MM | | 1 | PACK: U8882558 | |
| 14 | X8870535 | GR.CIRCLIP 46 DIA. X 2.05 MM | | 1 | PACK: U8882558 | |
| 14 | X8870536 | GR.CIRCLIP 46 DIA. X 2.00 MM | | 1 | PACK: U8882558 | |
| 14 | X8883040 | CIRCLIP GRADED 46 DIA X2.15 MM | | 1 | PACK: U8882558 | |
| 14 | X8883041 | CIRCLIP GRADED 46 DIA X 2.20 MM | | 1 | PACK: U8882558 | |
| 15 | X8870180 | NEEDLE BEARING | | 1 | | |
| 16 | 8880088 | GEAR MAINSHAFT 6TH | | 1 | | |
| 17 | 8877317 | SYNCHRO FLANGE | | 1 | | |
| 18 | 8877314 | SYNCHRO RING | | 2 | | |
| 19 | 8875127 | FIXED HUB 5TH/6TH | | 1 | | |
| 20 | 8875375 | SLIDING SLEEVE | | 1 | | |
| 21 | U8877531 | GRADED CIRCLIP PACK | | 1 | | |
| 21 | X8870370 | GR.C/CLIP 40 DIA. X 2.12 MM | | 1 | | |
| 21 | X8870371 | GR.C/CLIP 40 DIA. X 2.07 MM | | 1 | | |
| 21 | X8870372 | GR.C/CLIP 40 DIA X 2.02 MM | | 1 | | |
| 22 | X8870305 | NEEDLE BRG.ROLLER ASSY | | 1 | | |
| 23 | X8872236 | NEEDLE ROLLER BRG. ASSY. | | 1 | | |
| 24 | 8876904 | GEAR MAINSHAFT 2ND | 8881310 | 1 | | |
| 25 | U8882160 | SYNCHRO PACK D.C.1ST/2ND | | 1 | | |
| 26 | U8876620 | GRADED CIRCLIP PACK | | 1 | | |
| 26 | X8876597 | CIRCLIP GR.DIA. 65 X 4.15 | | 1 | PACK: U8876620 | |
| 26 | X8876598 | CIRCLIP-GR.DIA. 65 X 4.10 | | 1 | PACK: U8876620 | |
| 26 | X8876599 | CIRCLIP-GR.DIA. 65 X 4.05 | | 1 | PACK: U8876620 | |
| 26 | X8876600 | CIRCLIP-GR.DIA. 65 X 4.00 | | 1 | PACK: U8876620 | |

| Item | Current Part | Description | Replaced Part | Qty. | Notes | Kits/Assys Where Needed |
|------|--------------|--------------------------------|---------------|------|----------------|-------------------------|
| 26 | X8876601 | CIRCLIP-GR.DIA. 65 X 3.95 | | 1 | PACK: U8876620 | |
| 27 | 8882159 | GEAR MAINSHAFT 1ST | | 1 | | |
| 28 | X8870177 | NEEDLE ROLLER BRG. ASSY | | 1 | | |
| 29 | 8876602 | HUB FIXED REVERSE | | 1 | | |
| 30 | U8882193 | GRADED CIRCLIP PACK | | 1 | | |
| 30 | X8870378 | CIRCLIP-GR.DIA.60 X 2.10 MM | | 1 | | |
| 30 | X8870379 | CIRCLIP-GR.DIA.60 X 2.05 MM | | 1 | | |
| 30 | X8870380 | CIRCLIP-GR.DIA.60 X 2.00 MM | | 1 | | |
| 31 | X8870178 | NEEDLE ROLLER BRG. ASSY | | 1 | | |
| 32 | 8872013 | GEAR MAINSHAFT REVERSE | | 1 | | |
| 33 | X8877197 | BRG.M/S OUTPUT INT SPACER | | 1 | | |
| 34 | 8875385 | ROTOR TACHOGRAPH | | 1 | | |
| 35 | GX8870572 | DIRT SHIELD | | 1 | | |
| 36 | Z8883477 | COUPLING FLANGE | | 1 | | |
| 37 | GX8870564 | MAINSHAFT NUT | | 1 | M33 | |

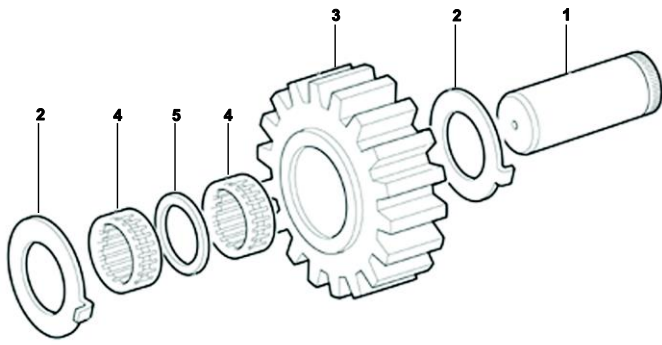


TZ0075

REAR CASE ASSY.

| Item | Current Part | Description | Replaced Part | Qty. | Notes | Kits/Assys Where Needed |
|------|--------------|------------------------|---------------|------|---------------------|-------------------------|
| 0 | U8876808 | REAR CASE ASSY. | | 1 | | |
| 1 | GX8874026 | LIFTING EYE | | 2 | | |
| 2 | 8876781 | REAR CASE | | 1 | | |
| 3 | GX8880554 | BEARING COVER LAYSHAFT | | 1 | | |
| 4 | GMX-8-1239 | SCREW | | 4 | M12 X 25 HEX FLG HD | |
| 5 | GX8870278 | CUP PLUG | | 1 | | |
| 6 | GX2771532 | SWITCH REVERSE / RANGE | | 1 | | |
| 7 | 5568510 | O-RING | | 1 | | |

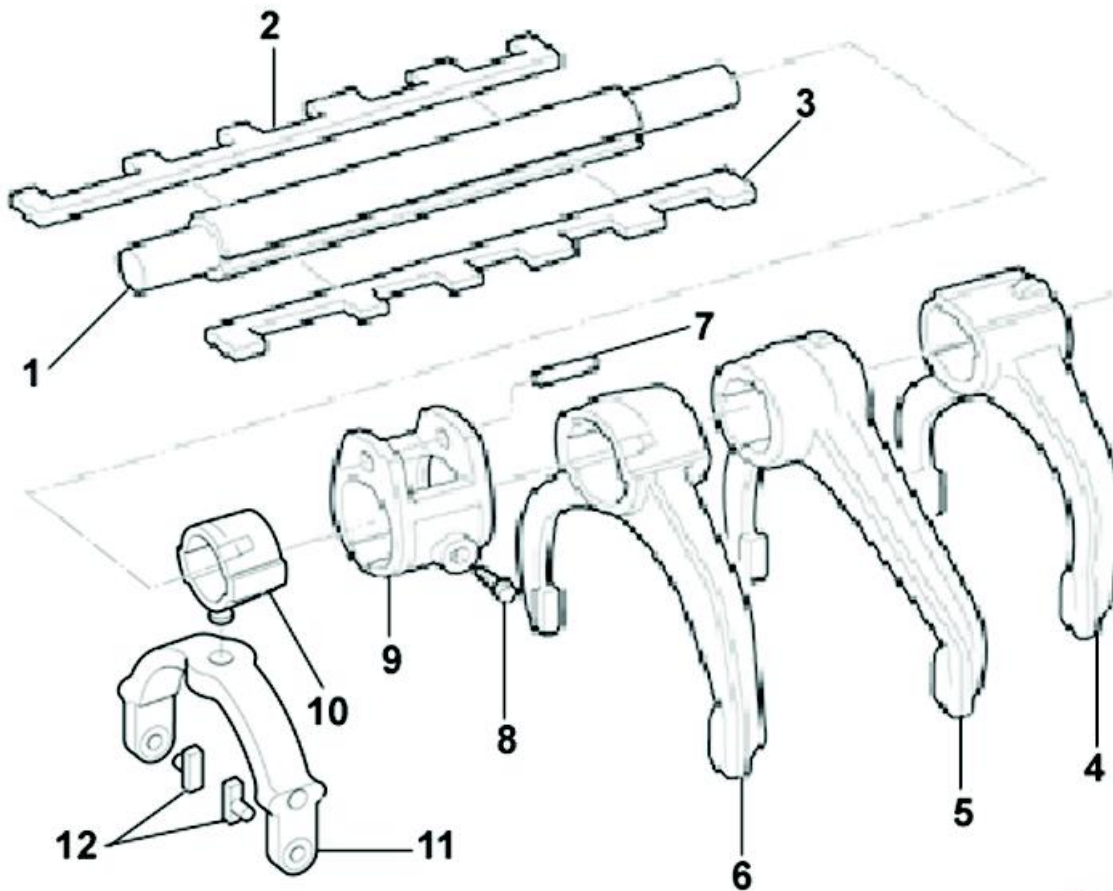
| Item | Current Part | Description | Replaced Part | Qty. | Notes | Kits/Assys Where Needed |
|------|--------------|---------------------|---------------|------|-------------------------|-------------------------|
| 8 | X8880496 | CORE PLUG | | 1 | 37.DIA | |
| 9 | X8881424 | CIRCLIP | | 1 | | |
| 10 | GX8881616 | PTO PROVISION COVER | | 1 | | |
| 11 | GMX-8-1088 | SCREW | | 6 | M12X25 HEX FLG HD | |
| 12 | X8870543 | DOWEL | | 2 | 16,0 DI X 30,5 | |
| 13 | 8874473 | SCREW | | 2 | | |
| 14 | 8874494 | PLATE OIL RETENTION | | 1 | | |
| 15 | 8883756 | BUSH | 8882415 | 1 | FOR MAIN SELECTOR SHAFT | |



TZ0007

REVERSE IDLER SHAFT

| Item | Current Part | Description | Replaced Part | Qty. | Notes | Kits/Assys Where Needed |
|------|--------------|---------------------|---------------|------|-------|-------------------------|
| 1 | 8883246 | REVERSE IDLER SHAFT | | 1 | | |
| 2 | 8870343 | THRUST WASHER | | 2 | | |
| 3 | 8880489 | GEAR REVERSE IDLER | | 1 | | |
| 4 | X8872478 | NEEDLE ROLLER BRG | | 2 | | |
| 5 | 8872479 | SPACER | | 1 | | |

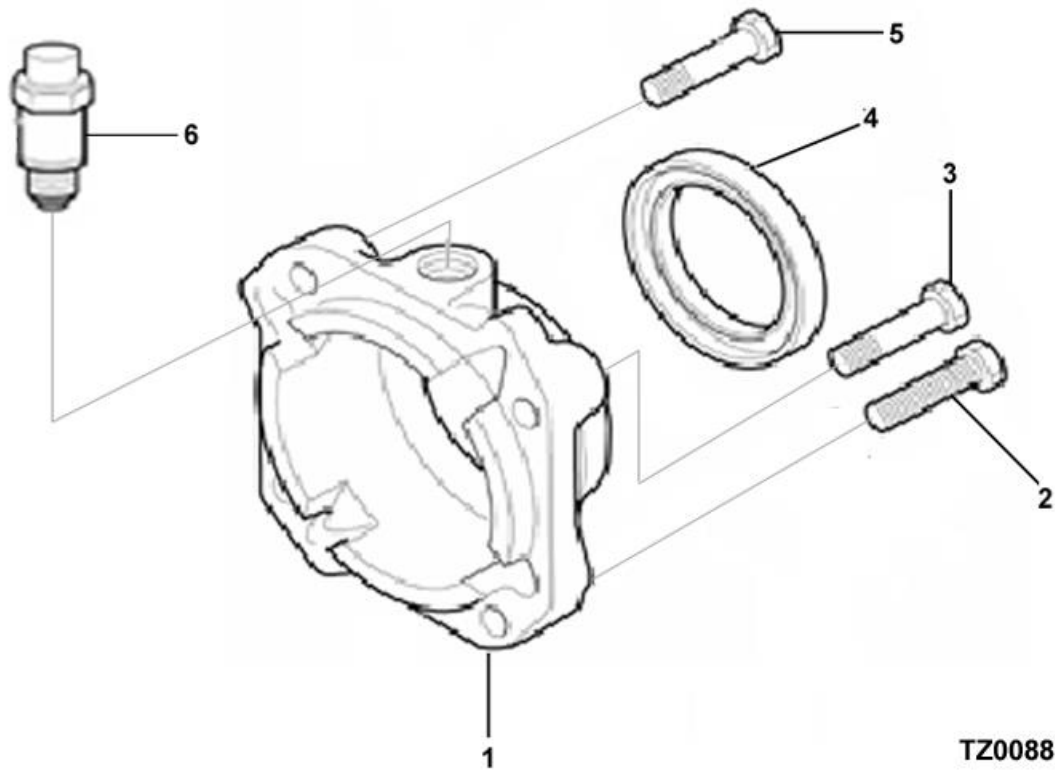


TZ0037

SELECTOR ASSY.

| Item | Current Part | Description | Replaced Part | Qty. | Notes | Kits/Assys Where Needed |
|------|--------------|----------------------------|---------------|------|---|-------------------------|
| 0 | T21235 | SERVICE KIT FOR FORK & PAD | | 1 | INCLUDES 8881826 & 8882321 | |
| 0 | U8875939 | SELECTOR BLOCK | | 1 | INCLUDES 8874755 & X8870277, INCLUDES 8874755 & X8870277 | |
| 0 | U8877720 | SELECTOR ASSY. O/D | | 1 | | |
| 1 | 8874835 | SELECTOR SHAFT | | 1 | | |
| 2 | 8876394 | SELECTOR KEY | | 1 | | |
| 3 | 8876395 | INTERLOCK KEY | | 1 | | |
| 4 | 8875503 | FORK REVERSE | | 1 | | |
| 5 | 8882620 | FORK 1ST/2ND | 8880805 | 1 | | |
| 6 | 8882619 | FORK 3RD/4TH | 8875501 | 1 | | |
| 7 | X8870277 | DOWEL | | 1 | | |
| 8 | 8873691 | SCREW | | 1 | M10X23 HEX HD | |

| Item | Current Part | Description | Replaced Part | Qty. | Notes | Kits/Assys Where Needed |
|------|--------------|--------------------|---------------|------|-------|-------------------------|
| 9 | 8874755 | SELECTOR BLOCK | | 1 | | |
| 10 | 8877718 | SELECTOR OVERDRIVE | | 1 | | |
| 11 | 8881826 | FORK OVERDRIVE | 8880960 | 1 | | T21235 |
| 12 | 8882321 | OVERDIVE SHIFT PAD | 8872043 | 2 | | T21235 |



SPEEDO HOUSING

| Item | Current Part | Description | Replaced Part | Qty. | Notes | Kits/Assys Where Needed |
|------|--------------|----------------------|---------------|------|---------------------|-------------------------|
| 0 | U8874938 | SPEEDO HOUSING ASSY. | | 1 | | |
| 1 | 8877755 | SPEEDO HOUSING | | 1 | | |
| 2 | GMX-8-1093 | BOLT | | 1 | M10X45 HEX FLG HD | |
| 3 | GMX-8-1092 | SCREW | | 1 | M10 X 30 HEX FLG HD | |
| 4 | X13711 | OIL SEAL | | 1 | | |
| 5 | GMX-8-1091 | SCREW | | 2 | M10X30 HEX FLG HD | |
| 6 | X8883716 | SPEEDO SENSOR | GX8882393 | 1 | | |

Copyright Eaton Corporation, 2009.
Eaton hereby grants their customers,
vendors, or distributors permission to
freely copy, reproduce and/or distribute
this document in printed format. It may
be copied only in its entirety without
any changes or modifications. THIS
INFORMATION IS NOT INTENDED FOR
SALE OR RESALE, AND THIS NOTICE
MUST REMAIN ON ALL COPIES.

