



*Powering Business Worldwide*

# Illustrated Parts List

---

**Y08031**

**November 2015**

# Contents

|   |    |
|---|----|
| How To Use The Illustrated Parts List ..... | 3  |
| BRACKET ASSY. ....                          | 4  |
| FRONT BEARING COVER ASSY. ....              | 5  |
| FRONT CASE ASSY.....                        | 6  |
| INPUT SHAFT ASSY.....                       | 8  |
| INTERMEDIATE CASE ASSY.....                 | 9  |
| LAYSHAFT ASSY. ....                         | 11 |
| LRC ASSEMBLY .....                          | 13 |
| MAINSHAFT ASSY.....                         | 15 |
| PLANET GEAR SPINDLE ASSY .....              | 18 |
| RANGE ASSY.....                             | 19 |
| RANGE CONTROL ASSY.....                     | 21 |
| REAR CASE ASSY. ....                        | 23 |
| REVERSE IDLER SHAFT.....                    | 25 |
| SELECTOR ASSY. ....                         | 26 |

## How To Use The Illustrated Parts List

The information contained in this document is subject to frequent updates. Therefore, for the latest information available, please visit the interactive Electronic Parts Catalog at <http://www.eaton.com/EatonCom/TruckEurope/TruckEurope/index.htm>

### Model Designation and Nomenclature

- For information regarding Model Designation and Nomenclature, visit <http://www.eaton.com/EatonCom/TruckEurope/TruckEurope/index.htm>

### Kits and Assemblies (K/A's)

- Kits or Assemblies contain groups of individual or assembled parts specially developed for optimal replacement during repair.
- Kits and Assemblies are shown with applicable parts groupings in the parts listings.

### Identifying Kits and Assemblies

A- Part numbers beginning with the letter 'A' are pre-assembled Production Assemblies

K- Part numbers beginning with the letter 'K' are kits that are not assembled

T - Part numbers beginning with the letter 'T' are kits that are not assembled

S- Part numbers beginning with the letter 'S' are pre-assembled Service Assemblies

- Note: Some Production Assemblies do not begin with a letter prefix (Midrange only).

### Illustrations

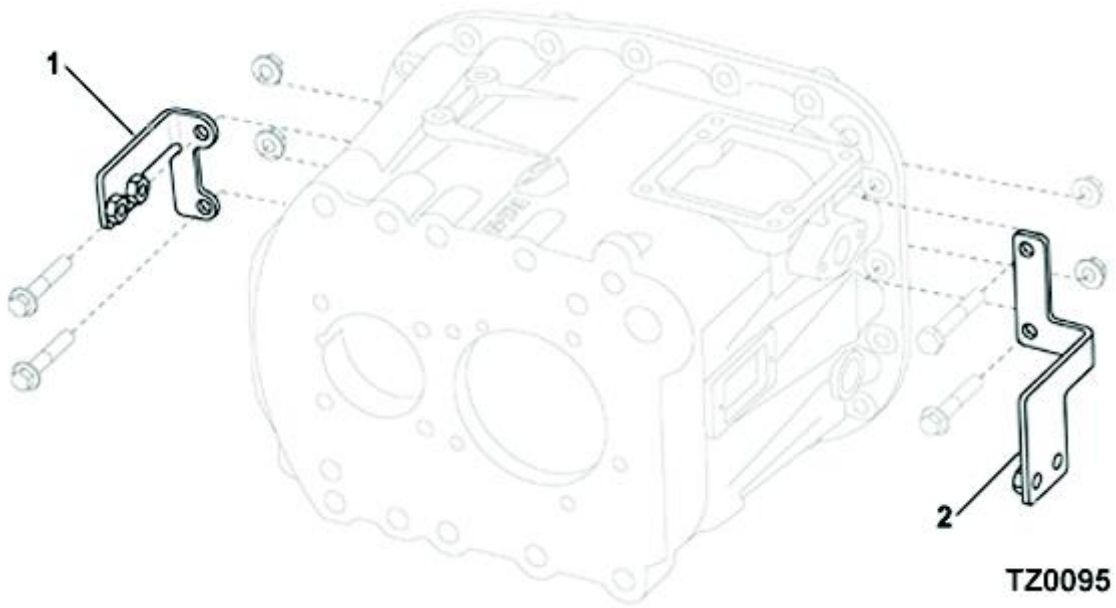
- Illustrations show parts in assembly groups.
- Item numbers on illustrations correspond with parts listings adjacent to the illustration.(on the same or adjacent page)
- Notes are included on illustrations where additional information is needed.

### Parts Listing

Parts listings are defined by parts groupings and are broken down by service assemblies. Parts listings identify a part for servicing with the following categories

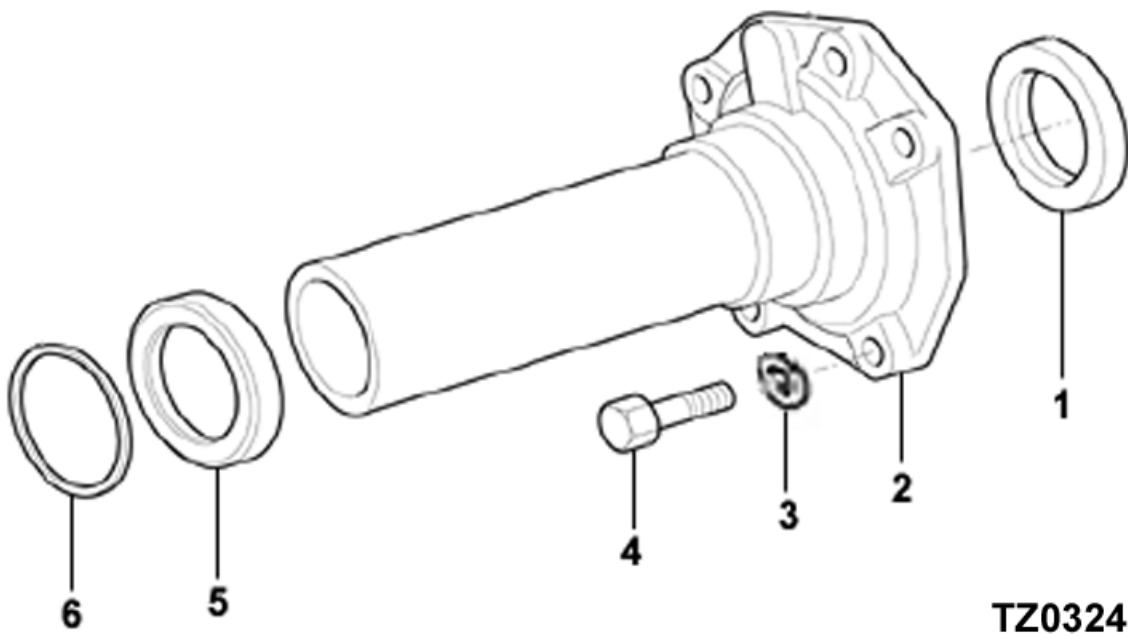
- **ITEM** - Number corresponds to number on illustration for part identification.
- **CURRENT PART** - part number of the part available for service.
- **DESCRIPTION** - part name or description.
- **REPLACED PART** - number of replaced part.
- **QTY** - Quantity required for assembly.
- **NOTES** - unique characteristics or requirements.
- **KITS / ASSYS WHERE NEEDED** - kits or assemblies that contain the part.

Group: BRACKET ASSY.



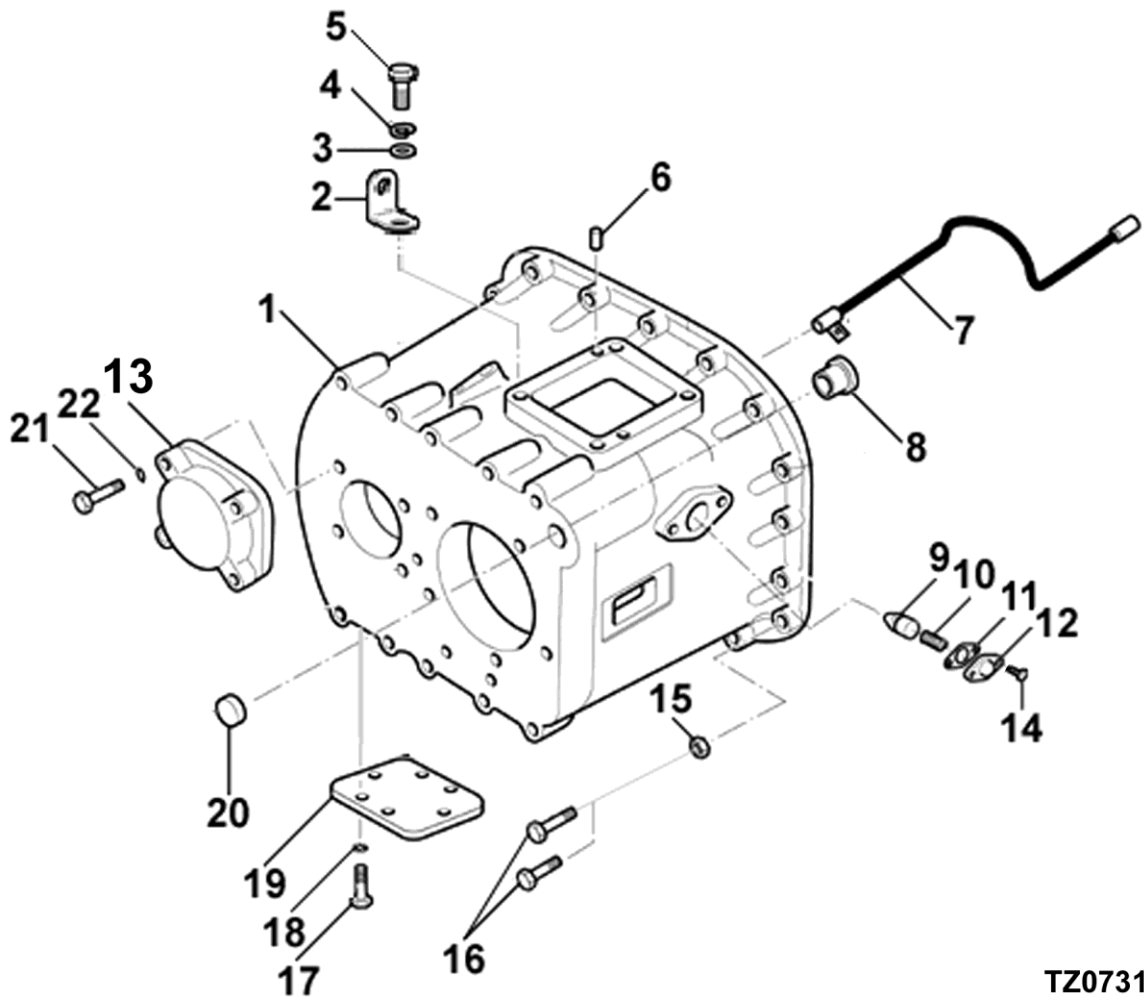
## BRACKET ASSY.

| Item | Current Part | Description                     | Replaced Part | Qty. | Notes | Kits/Assys Where Needed |
|------|--------------|---------------------------------|---------------|------|-------|-------------------------|
| 1    | U8877344     | BRACKET D ASSY<br>ENCAPSULATION |               | 1    |       |                         |
| 2    | U8877345     | BRACKET E ASSY<br>ENCAPSULATION |               | 1    |       |                         |



**FRONT BEARING COVER ASSY.**

| Item | Current Part | Description               | Replaced Part | Qty. | Notes               | Kits/Assys Where Needed |
|------|--------------|---------------------------|---------------|------|---------------------|-------------------------|
| 0    | U8877092     | FRONT BEARING COVER ASSY. |               | 1    |                     |                         |
| 1    | X8870760     | OIL SEAL                  |               | 1    |                     |                         |
| 2    | 8877091      | FRONT BEARING COVER ASSY. |               | 1    |                     |                         |
| 3    | DMX-3-1001   | WASHER SPRING             |               | 5    | M10                 |                         |
| 4    | DMX-8-1002   | SCREW                     |               | 5    | M10 X 25 HEX HD     |                         |
| 5    | 8877523      | O-RING HOUSING            |               | 1    |                     |                         |
| 6    | X8876391     | O-RING                    |               | 1    | 135 I.D. X 2.5 SECT |                         |

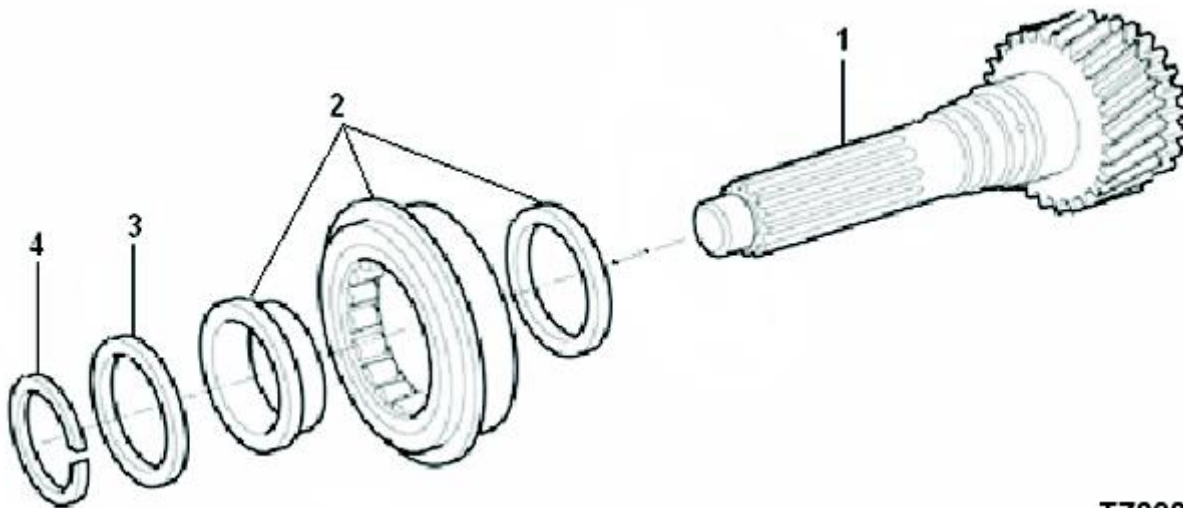


TZ0731

**FRONT CASE ASSY**

| Item | Current Part | Description         | Replaced Part | Qty. | Notes                   | Kits/Assys Where Needed |
|------|--------------|---------------------|---------------|------|-------------------------|-------------------------|
| 0    | U8877559     | FRONT CASE ASSY.    |               | 1    |                         |                         |
| 1    | 8877560      | FRONT CASE          |               | 1    |                         |                         |
| 2    | D20815       | LIFTING EYE         |               | 1    |                         |                         |
| 3    | DX11245      | WASHER              |               | 3    | M10                     |                         |
| 4    | DMX-3-1001   | WASHER SPRING       |               | 4    | M10                     |                         |
| 5    | DMX-8-1003   | SCREW               |               | 4    | M10 X 35 HEX HD         |                         |
| 6    | X8870542     | DOWEL               |               | 2    | 8,0 DIA X 16            |                         |
| 7    | U8880098     | OIL SPRAY BAR ASSY. |               | 1    |                         |                         |
| 8    | 8883756      | BUSH                | 8882415       | 1    | FOR MAIN SELECTOR SHAFT |                         |
| 9    | 8873654      | PLUNGER-NEUTRAL     |               | 1    |                         |                         |

| Item | Current Part | Description               | Replaced Part | Qty. | Notes           | Kits/Assys Where Needed |
|------|--------------|---------------------------|---------------|------|-----------------|-------------------------|
| 10   | 8870587      | DETENT SPRING             |               | 1    |                 |                         |
| 11   | 8870590      | GASKET                    |               | 1    |                 |                         |
| 12   | GX8870259    | DETENT COVER              |               | 1    |                 |                         |
| 13   | 8880066      | BEARING COVER<br>LAYSHAFT |               | 1    |                 |                         |
| 14   | GMX-8-0819   | SCREW                     | GMX-8-0801    | 2    | M8 X 16         |                         |
| 15   | GMX-9-1005   | NUT                       |               | 14   | M10X1.5         |                         |
| 16   | GMX-8-1079   | BOLT                      |               | 4    | M10X40          |                         |
| 16   | GMX-8-1080   | BOLT                      |               | 14   | M10X58          |                         |
| 17   | DMX-8-1001   | SCREW                     |               | 6    | M10 X 20 HEX HD |                         |
| 18   | DMX-3-1001   | WASHER SPRING             |               | 6    | M10             |                         |
| 19   | 2005144      | PTO COVER                 |               | 1    |                 |                         |
| 20   | GX8870278    | CUP PLUG                  |               | 1    |                 |                         |
| 21   | DMX-8-1209   | SCREW                     |               | 4    | M12 X 25 HEX HD |                         |
| 22   | DMX-3-1201   | SPRING WASHER             |               | 4    | M12             |                         |

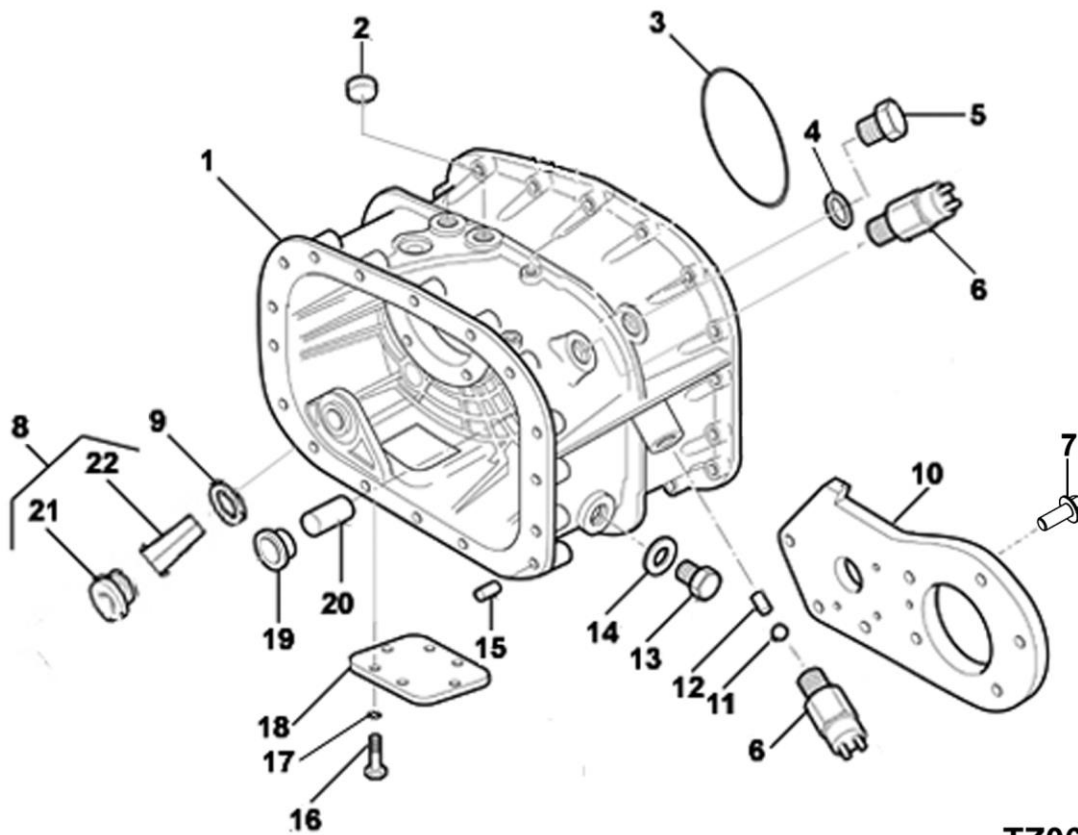


**TZ0003**

**INPUT SHAFT ASSY.**

| Item | Current Part | Description          | Replaced Part | Qty. | Notes          | Kits/Assys Where Needed |
|------|--------------|----------------------|---------------|------|----------------|-------------------------|
| 0    | U8880004     | INPUT SHAFT ASSEMBLY |               | 1    |                |                         |
| 1    | 8877837      | INPUT SHAFT          |               | 1    |                |                         |
| 2    | X8872593     | INPUT SHAFT BEARING  |               | 1    |                |                         |
| 3    | 8877692      | SPACER - GRADED 3.10 |               | 1    | PACK: U8877691 |                         |
| 3    | 8877693      | SPACER - GRADED 3.15 |               | 1    | PACK: U8877691 |                         |
| 3    | 8877694      | SPACER - GRADED 3.20 |               | 1    | PACK: U8877691 |                         |
| 3    | 8877695      | SPACER - GRADED 3.25 |               | 1    | PACK: U8877691 |                         |
| 3    | 8877696      | SPACER - GRADED 3.30 |               | 1    | PACK: U8877691 |                         |
| 3    | 8877697      | SPACER - GRADED 3.35 |               | 1    | PACK: U8877691 |                         |
| 3    | 8877698      | SPACER - GRADED 3.40 |               | 1    | PACK: U8877691 |                         |
| 3    | 8877699      | SPACER - GRADED 3.45 |               | 1    | PACK: U8877691 |                         |
| 3    | 8877700      | SPACER - GRADED 3.50 |               | 1    | PACK: U8877691 |                         |
| 3    | U8877691     | SPACER - GRADED PACK |               | 1    |                |                         |
| 4    | X8877706     | CIRCLIP              |               | 1    |                |                         |



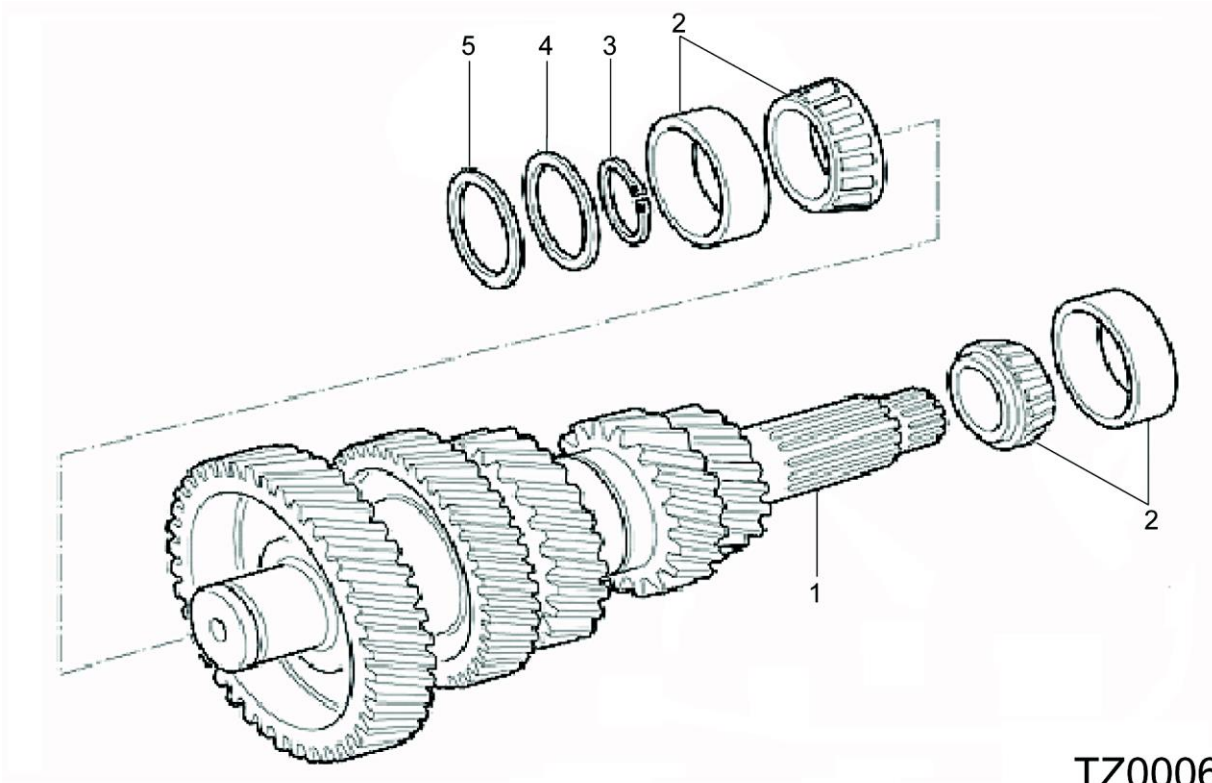


**TZ0642**

**INTERMEDIATE CASE ASSY.**

| Item | Current Part | Description                      | Replaced Part | Qty. | Notes                                  | Kits/Assys Where Needed |
|------|--------------|----------------------------------|---------------|------|--|-------------------------|
| 0    | T21228       | SERVICE KIT OIL STRAINER/ WASHER |               | 1    | INCLUDES 8876351, GX8876352 & X8880469 |                         |
| 0    | U8876423     | INTERMEDIATE CASE ASSY           |               | 1    |  |                         |
| 1    | 8876418      | INTERMEDIATE CASE                |               | 1    |  |                         |
| 2    | 8876744      | CORE PLUG OIL RESTRICTOR         |               | 1    |  |                         |
| 3    | X8881475     | O-RING                           |               | 1    | (109,5X3,0)                            |                         |
| 4    | X8880470     | WASHER                           |               | 1    |  |                         |
| 5    | GX8871502    | PLUG                             |               | 1    | M16                                    |                         |
| 6    | 8876416      | REVERSE SWITCH                   |               | 1    |  |                         |
| 7    | GMX-8-1089   | SCREW                            |               | 8    | M10X25 HEX FLG HD                      |                         |
| 8    | U8876353     | OIL STRAINER ASSY.               |               | 1    |  | T21228                  |
| 9    | X8880469     | WASHER-OIL STRAINER / DRAIN      |               | 1    |  | T21228                  |

| Item | Current Part | Description          | Replaced Part | Qty. | Notes                   | Kits/Assys Where Needed |
|------|--------------|----------------------|---------------|------|-------------------------|-------------------------|
| 10   | U8875469     | OIL PUMP ASSY.       |               | 1    |                         |                         |
| 11   | X8870711     | BALL                 |               | 1    | DIA.14                  |                         |
| 12   | 8875267      | PIN INTERLOCK        |               | 1    |                         |                         |
| 13   | GX8874942    | OIL FILLER PLUG      |               | 1    |                         |                         |
| 14   | X8880519     | WASHER-FILL/DRAIN FL |               | 1    |                         |                         |
| 15   | X8870543     | DOWEL                |               | 2    | 16,0 DI X 30,5          |                         |
| 16   | DMX-8-1001   | SCREW                |               | 6    | M10 X 20 HEX HD         |                         |
| 17   | DMX-3-1001   | WASHER SPRING        |               | 6    | M10                     |                         |
| 18   | 2005144      | PTO COVER            |               | 1    |                         |                         |
| 19   | X8871377     | BUSH                 |               | 1    |                         |                         |
| 20   | 8883756      | BUSH                 | 8882415       | 1    | FOR MAIN SELECTOR SHAFT |                         |
| 21   | GX8876352    | PLUG OIL STRAINER    |               | 1    |                         |                         |
| 22   | 8876351      | STRAINER-OIL         |               | 1    |                         |                         |

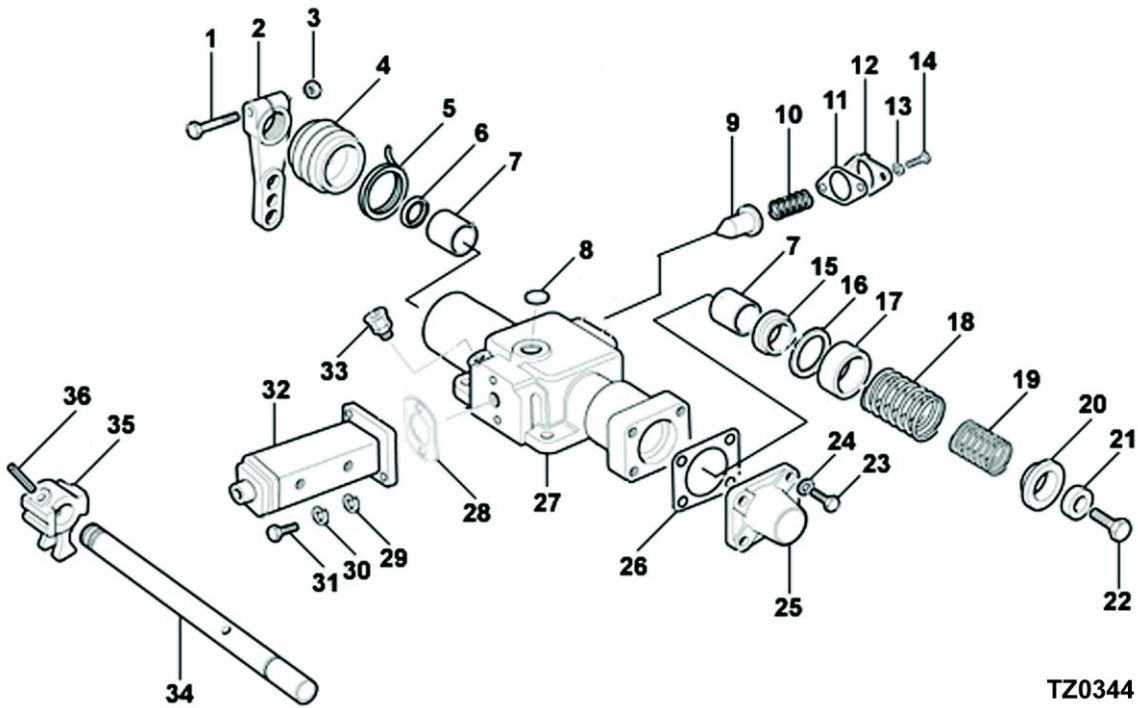


TZ0006

### LAYSHAFT ASSY.

| Item | Current Part | Description                 | Replaced Part | Qty. | Notes | Kits/Assys Where Needed |
|------|--------------|-----------------------------|---------------|------|-------|-------------------------|
| 1    | U8880745     | LAYSHAFT ASSY.              |               | 1    |       |                         |
| 2    | X8875587     | BEARING ASSEMBLY            |               | 2    |       |                         |
| 3    | U8877534     | CIRCLIP GRADED PACK         |               | 1    |       |                         |
| 3    | X8870370     | GR.C/CLIP 40 DIA. X 2.12 MM |               | 1    |       |                         |
| 3    | X8870371     | GR.C/CLIP 40 DIA. X 2.07 MM |               | 1    |       |                         |
| 3    | X8870372     | GR.C/CLIP 40 DIA X 2.02 MM  |               | 1    |       |                         |
| 3    | X8871536     | GR.C/CLIP 40 DIA. X 1.97 MM |               | 1    |       |                         |
| 3    | X8871537     | GR.C/CLIP 40 DIA. X 1.92 MM |               | 1    |       |                         |
| 3    | X8871538     | GR.C/CLIP 40 DIA. X 1.87 MM |               | 1    |       |                         |
| 3    | X8871539     | GR.C/CLIP 40 DIA. X 1.82 MM |               | 1    |       |                         |
| 3    | X8871540     | GR.C/CLIP 40 DIA. X 1.77 MM |               | 1    |       |                         |

| Item | Current Part | Description | Replaced Part | Qty. | Notes   | Kits/Assys Where Needed |
|------|--------------|-------------|---------------|------|---------|-------------------------|
| 4    | F88891       | SHIM        |               | 1    | S=0,051 |                         |
| 4    | F88892       | SHIM        |               | 1    | S=0,127 |                         |
| 4    | F88893       | SHIM        |               | 1    | S=0,254 |                         |
| 4    | F88894       | SHIM        |               | 1    | S=0,508 |                         |
| 4    | U8877535     | SHIM PACK   |               | 1    |         |                         |
| 4    | X8882272     | SHIM        |               | 1    | S=1,200 |                         |
| 5    | 8875879      | SPACER      |               | 1    |         |                         |

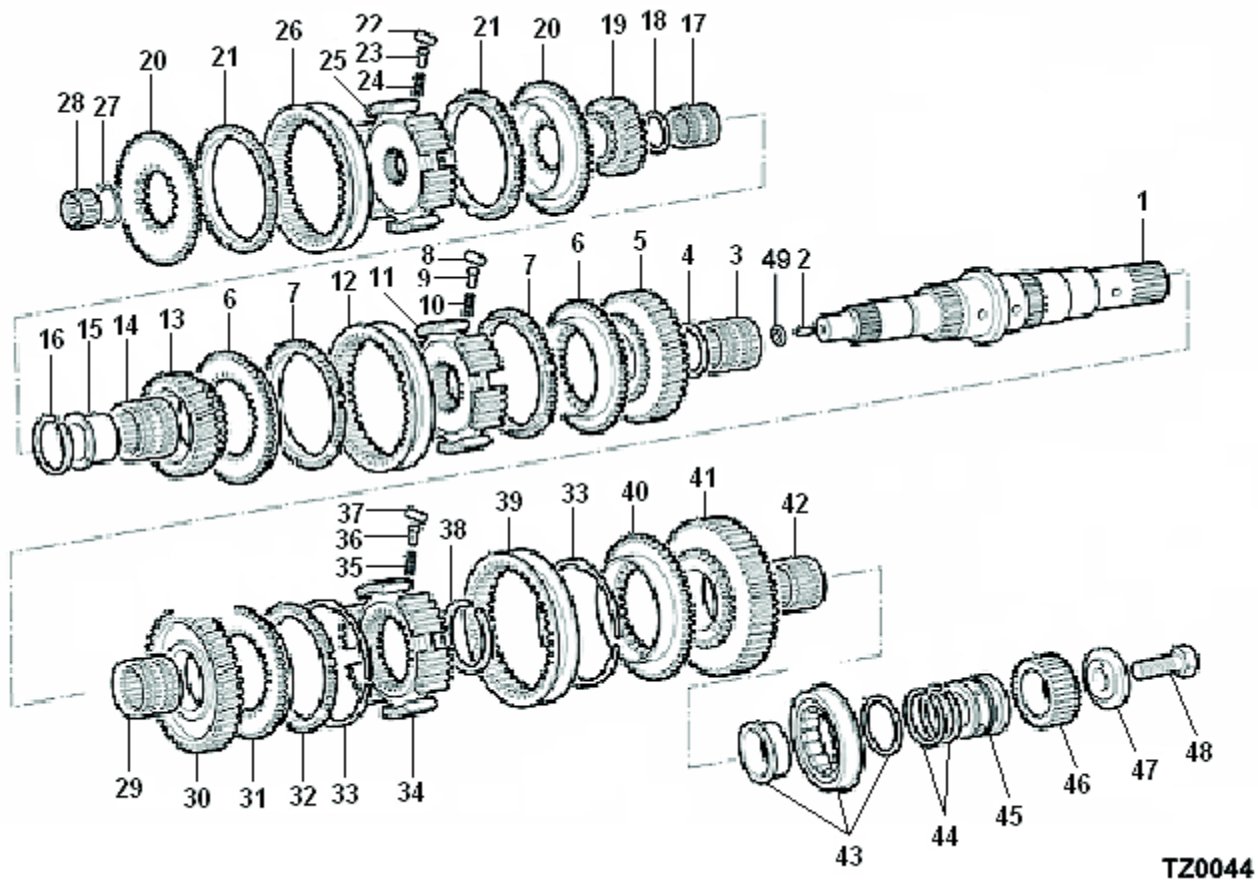


TZ0344

## LRC ASSEMBLY

| Item | Current Part | Description      | Replaced Part | Qty. | Notes           | Kits/Assys Where Needed |
|------|--------------|------------------|---------------|------|-----------------|-------------------------|
| 0    | U8877266     | LRC ASSY. LH HH  |               | 1    |                 |                         |
| 1    | DMX-8-1007   | BOLT             |               | 1    | M10 X 50 HEX HD |                         |
| 2    | D8876046     | OUTER LEVER      |               | 1    |                 |                         |
| 3    | GMX-9-1005   | NUT              |               | 1    | M10X1.5         |                         |
| 4    | X8875259     | BOOT             |               | 1    |                 |                         |
| 5    | F96430       | CABLE TIE        |               | 1    |                 |                         |
| 6    | X8881481     | OIL SEAL         |               | 1    |                 |                         |
| 7    | X8871377     | BUSH             |               | 2    |                 |                         |
| 8    | GX8871486    | EXPANSION PLUG   |               | 1    |                 |                         |
| 9    | 8875415      | PLUNGER - DETENT |               | 2    |                 |                         |
| 10   | 8874819      | DETENT SPRING    |               | 1    |                 |                         |
| 11   | 8870590      | GASKET           |               | 1    |                 |                         |
| 12   | GX8870259    | DETENT COVER     |               | 1    |                 |                         |
| 13   | GMX-3-0801   | WASHER SPRING    |               | 2    | M8              |                         |
| 14   | GMX-8-       | SCREW            |               | 2    | M8X14           |                         |

| Item | Current Part | Description          | Replaced Part | Qty. | Notes          | Kits/Assys Where Needed |
|------|--------------|----------------------|---------------|------|----------------|-------------------------|
|      | 0801         |                      |               |      |                |                         |
| 15   | 8871374      | SPRING RETAINING CUP |               | 1    |                |                         |
| 16   | 8871481      | WASHER STOP          |               | 1    |                |                         |
| 17   | 8872637      | SPACER               |               | 1    |                |                         |
| 18   | 8873963      | BOOSTER SPRING       |               | 1    |                |                         |
| 19   | 8873736      | BIAS SPRING          |               | 1    |                |                         |
| 20   | 8872639      | SPRING RETAINER BUSH |               | 1    |                |                         |
| 21   | 8871478      | WASHER PLAIN         |               | 1    | M8             |                         |
| 22   | GMX-8-0803   | SCREW                |               | 1    | M8X25          |                         |
| 23   | MX-8-0810    | SCREW                |               | 4    | M8 X 30 SKT HD |                         |
| 24   | GMX-3-0801   | WASHER SPRING        |               | 4    | M8             |                         |
| 25   | 8876041      | END COVER            |               | 1    |                |                         |
| 26   | 8873734      | GASKET               |               | 1    |                |                         |
| 27   | 8876463      | LRC HOUSING LH.      |               | 1    |                |                         |
| 28   | F91353       | JOINT                |               | 1    |                |                         |
| 29   | GMX-10-0601  | WASHER               |               | 2    | M6             |                         |
| 30   | GMX-3-0602   | WASHER SPRING        |               | 2    | M6             |                         |
| 31   | GMX-8-0629   | SCREW                |               | 2    | M6 X 20        |                         |
| 32   | F96387       | RANGE VALVE          |               | 1    |                |                         |
| 33   | X2014210     | BREATHER             |               | 1    |                |                         |
| 34   | GX8877748    | SHIFT ROD            |               | 1    |                |                         |
| 35   | 8877659      | INNER STRIKING LEVER |               | 1    |                |                         |
| 36   | X8871378     | DOWEL                |               | 1    | 10,0 DIA X 44  |                         |



TZ0044

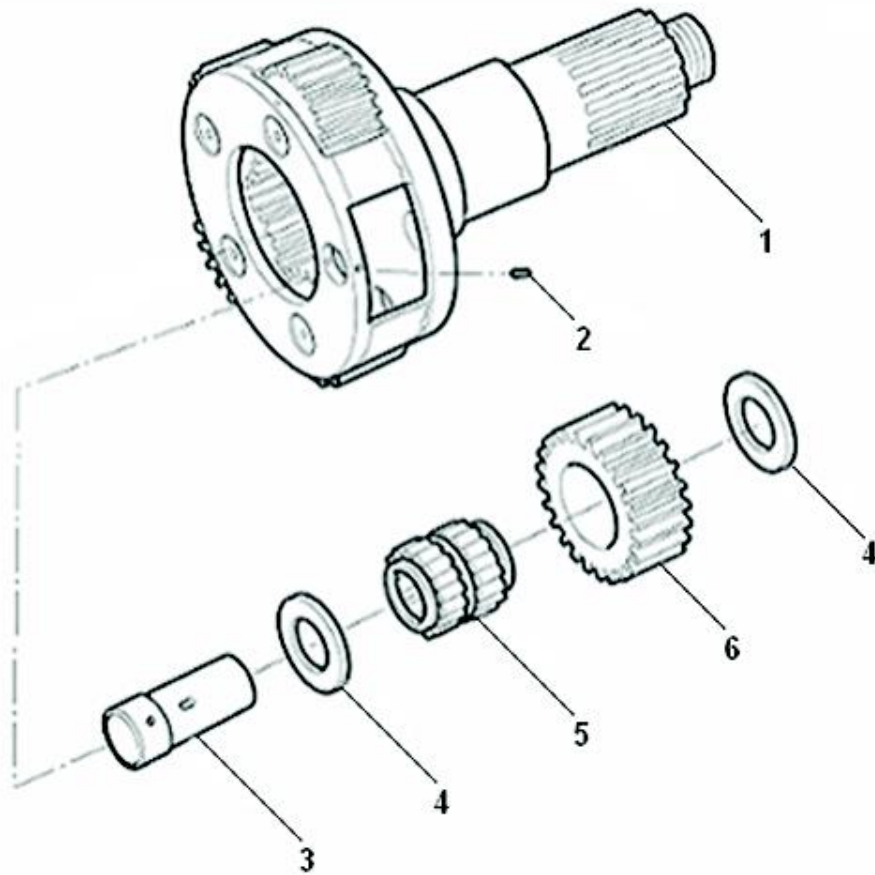
## MAINSHAFT ASSY.

| Item | Current Part | Description             | Replaced Part | Qty. | Notes          | Kits/Assys Where Needed |
|------|--------------|-------------------------|---------------|------|----------------|-------------------------|
| 0    | U8877367     | MAINSHAFT ASSY.         |               | 1    |                |                         |
| 1    | U8877167     | MAINSHAFT SUB ASSY.     |               | 1    |                |                         |
| 2    | X14851       | DOWEL                   |               | 1    | 5/16 DI X 1.50 |                         |
| 3    | X8872233     | NEEDLE ROLLER BRG. ASSY |               | 1    |                |                         |
| 4    | 8872589      | GEAR SPACER 1ST         |               | 1    |                |                         |
| 5    | 8876948      | GEAR MAINSHAFT 1ST      |               | 1    |                |                         |
| 6    | 8871639      | SYNCH. FLANGE 2ND/3RD   |               | 2    |                |                         |
| 7    | 8875135      | SYNCHRO RING CONE       |               | 2    |                |                         |
| 8    | X8870356     | ROLLER                  |               | 3    |                |                         |
| 9    | 8870352      | PLUNGER                 |               | 3    |                |                         |
| 10   | 8870444      | SPRING COMPRESSION      |               | 3    |                |                         |
| 11   | 8875571      | HUB-FIXED, 1ST/2ND      |               | 1    |                |                         |

| Item | Current Part | Description                        | Replaced Part | Qty. | Notes          | Kits/Assys Where Needed |
|------|--------------|------------------------------------|---------------|------|----------------|-------------------------|
| 12   | 8875377      | SLIDING SLEEVE                     |               | 1    |                |                         |
| 13   | 8872582      | GEAR MAINSHAFT 2ND                 |               | 1    |                |                         |
| 14   | X8872233     | NEEDLE ROLLER BRG.<br>ASSY         |               | 1    |                |                         |
| 15   | 8882868      | SLEEVE MAINSHAFT<br>BEARING        |               | 1    |                |                         |
| 16   | U8882558     | GRADED CIRCLIP PACK                |               | 1    |                |                         |
| 16   | X8870534     | GR.CIRCLIP 46 DIA. X 2.10<br>MM    |               | 1    | PACK: U8882558 |                         |
| 16   | X8870535     | GR.CIRCLIP 46 DIA. X 2.05<br>MM    |               | 1    | PACK: U8882558 |                         |
| 16   | X8870536     | GR.CIRCLIP 46 DIA. X 2.00<br>MM    |               | 1    | PACK: U8882558 |                         |
| 16   | X8883040     | CIRCLIP GRADED 46 DIA<br>X2.15 MM  |               | 1    | PACK: U8882558 |                         |
| 16   | X8883041     | CIRCLIP GRADED 46 DIA<br>X 2.20 MM |               | 1    | PACK: U8882558 |                         |
| 17   | X8870180     | NEEDLE BEARING                     |               | 1    |                |                         |
| 18   | 8872588      | GEAR SPACER 4TH                    |               | 1    |                |                         |
| 19   | 8880740      | GEAR MAINSHAFT 3RD                 |               | 1    |                |                         |
| 20   | 8871639      | SYNCH. FLANGE<br>2ND/3RD           |               | 2    |                |                         |
| 21   | 8875135      | SYNCHRO RING CONE                  |               | 2    |                |                         |
| 22   | X8870356     | ROLLER                             |               | 3    |                |                         |
| 23   | 8870352      | PLUNGER                            |               | 3    |                |                         |
| 24   | 8870444      | SPRING COMPRESSION                 |               | 3    |                |                         |
| 25   | 8875554      | FIXED HUB 3RD/4TH                  |               | 1    |                |                         |
| 26   | 8875377      | SLIDING SLEEVE                     |               | 1    |                |                         |
| 27   | U8877531     | GRADED CIRCLIP PACK                |               | 1    |                |                         |
| 27   | X8870370     | GR.C/CLIP 40 DIA. X 2.12<br>MM     |               | 1    |                |                         |
| 27   | X8870371     | GR.C/CLIP 40 DIA. X 2.07<br>MM     |               | 1    |                |                         |
| 27   | X8870372     | GR.C/CLIP 40 DIA X 2.02<br>MM      |               | 1    |                |                         |
| 28   | X8870305     | NEEDLE BRG.ROLLER<br>ASSY          |               | 1    |                |                         |
| 29   | X8872233     | NEEDLE ROLLER BRG.<br>ASSY         |               | 1    |                |                         |



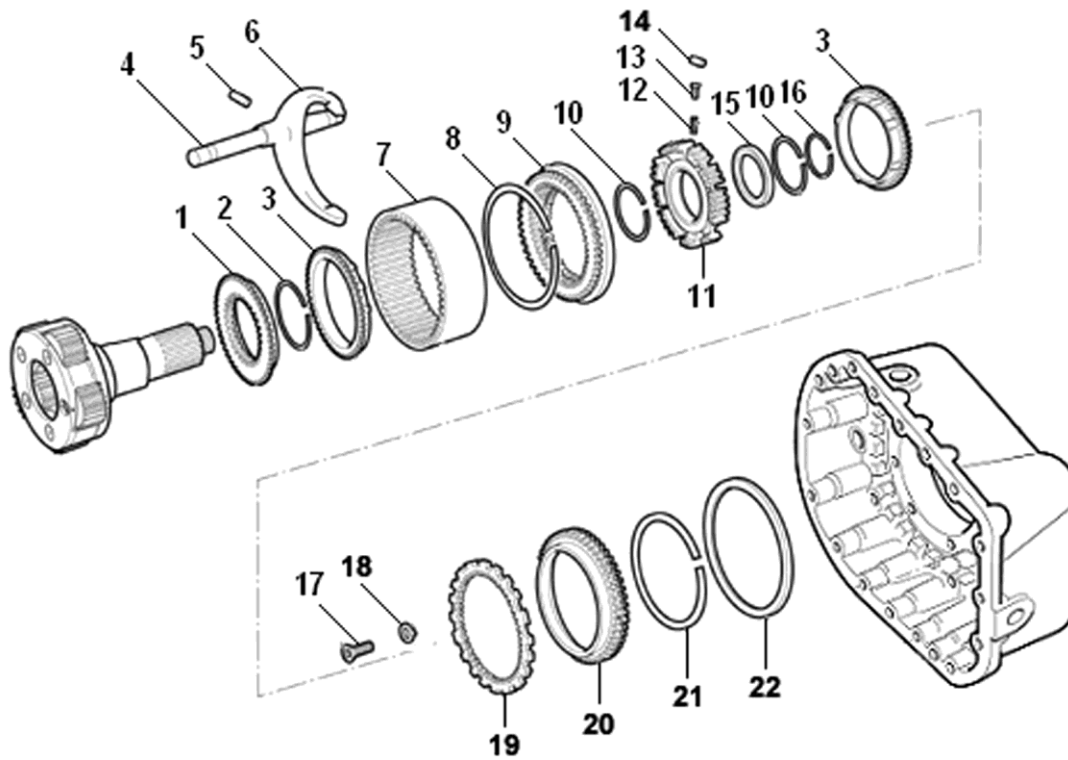
| Item | Current Part | Description                    | Replaced Part | Qty. | Notes         | Kits/Assys Where Needed |
|------|--------------|--------------------------------|---------------|------|---------------|-------------------------|
| 30   | 8876477      | GEAR MAINSHAFT<br>CRAWLER      |               | 1    |               |                         |
| 31   | 8876166      | SYNCHRO FLANGE                 |               | 1    |               |                         |
| 32   | 8876105      | SYNCHRO RING                   |               | 2    |               |                         |
| 33   | X8873994     | CIRCLIP SYNCHRO.<br>ASSY.      |               | 1    |               |                         |
| 34   | 8875604      | FIXED HUB<br>REVERSE/CRAWLER   |               | 1    |               |                         |
| 35   | 8870444      | SPRING COMPRESSION             |               | 3    |               |                         |
| 36   | 8870352      | PLUNGER                        |               | 3    |               |                         |
| 37   | X8870356     | ROLLER                         |               | 3    |               |                         |
| 38   | U8882193     | GRADED CIRCLIP PACK            |               | 1    |               |                         |
| 38   | X8870378     | CIRCLIP-GR.DIA.60 X 2.10<br>MM |               | 1    |               |                         |
| 38   | X8870379     | CIRCLIP-GR.DIA.60 X 2.05<br>MM |               | 1    |               |                         |
| 38   | X8870380     | CIRCLIP-GR.DIA.60 X 2.00<br>MM |               | 1    |               |                         |
| 39   | 8875376      | SLIDING SLEEVE                 |               | 1    |               |                         |
| 40   | 8870415      | SYNCHRO FLANGE<br>REVERSE      |               | 1    |               |                         |
| 41   | 8876478      | GEAR MAINSHAFT<br>REVERSE      |               | 1    |               |                         |
| 42   | X8870178     | NEEDLE ROLLER BRG.<br>ASSY     |               | 1    |               |                         |
| 43   | X8877164     | BEARING REAR<br>MAINSHAFT      |               | 1    |               |                         |
| 44   | X8875532     | SEALING RING                   |               | 2    |               |                         |
| 45   | 8874921      | OIL MUFF                       |               | 1    |               |                         |
| 46   | 8875585      | SUN GEAR                       |               | 1    |               |                         |
| 47   | 8880594      | RETAINER                       |               | 1    |               |                         |
| 48   | GX8870699    | SCREW                          |               | 1    | M16X45 HEX HD |                         |
| 49   | 8876298      | RESTRICTOR                     |               | 1    |               |                         |



**TZ0008**

### PLANET GEAR SPINDLE ASSY

| Item | Current Part | Description              | Replaced Part | Qty. | Notes               | Kits/Assys Where Needed |
|------|--------------|--------------------------|---------------|------|---------------------|-------------------------|
| 0    | U8876669     | PLANET GEAR SPINDLE ASSY |               | 1    | COMPRISES ITEMS 1-6 |                         |
| 1    | U8882490     | OUTPUT SHAFT ASSY.       |               | 1    |                     |                         |
| 2    | MX-11-0601   | SCREW                    |               | 5    | M6 X 10 SKT HD SET  |                         |
| 3    | 8872682      | SPINDLE-PLANET GEAR      |               | 5    |                     |                         |
| 4    | 8876893      | WASHER                   |               | 10   |                     |                         |
| 5    | U8875235     | NEEDLE ROLLER BRG. ASSY. |               | 5    |                     |                         |
| 6    | 8883395      | GEAR PLANET              | 8875586       | 5    |                     |                         |

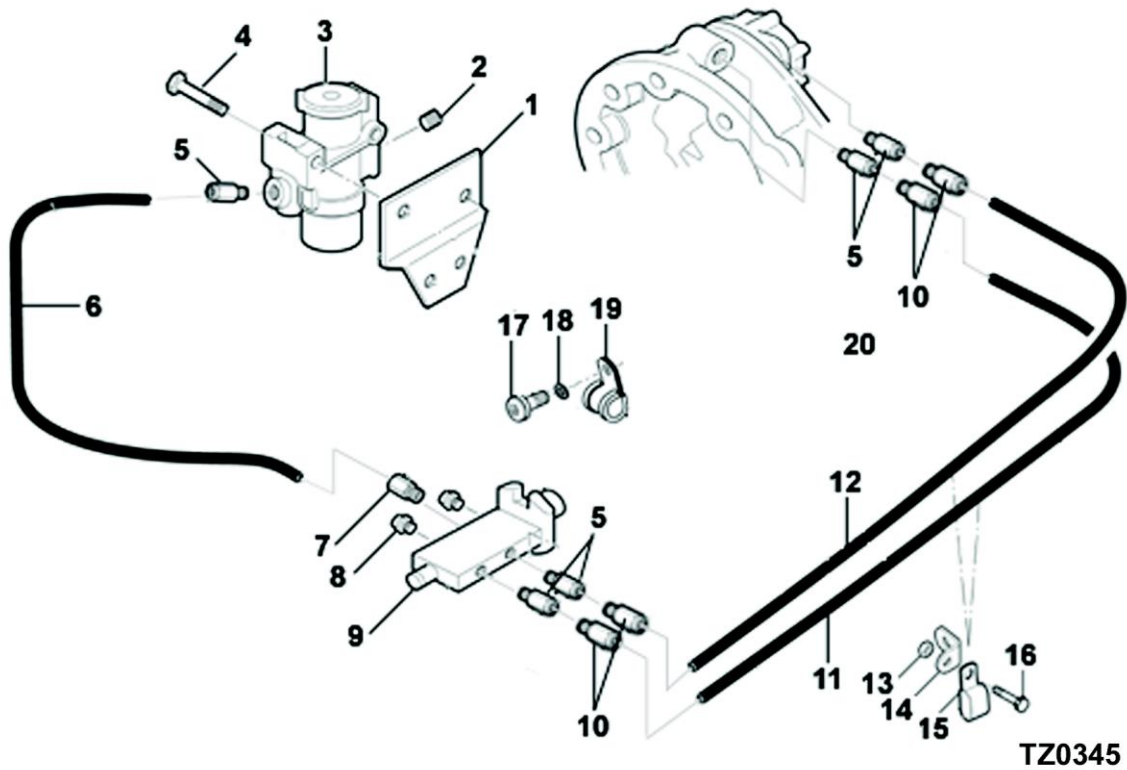


**TZ0033**

**RANGE ASSY.**

| Item | Current Part | Description         | Replaced Part   | Qty. | Notes       | Kits/Assys Where Needed |
|------|--------------|---------------------|-----------------|------|-------------|-------------------------|
| 0    | U8875884     | RANGE ASSY.         |                 | 1    |             |                         |
| 1    | 8874923      | SYNCHRO FLANGE      |                 | 1    |             |                         |
| 2    | X8870342     | CIRCLIP             |                 | 1    |             |                         |
| 3    | 8875183      | SYNCHRO RING        |                 | 2    |             |                         |
| 4    | 8876859      | SHIFT ROD - RANGE   |                 | 1    |             |                         |
| 5    | X8878665     | DOWEL               | X8870726        | 1    | ECO-0015293 |                         |
| 6    | 8872737      | HIGH/LOW SHIFT FORK | 8872737,8883677 | 1    |             |                         |
| 7    | 8872680      | ANNULUS             |                 | 1    |             |                         |
| 8    | X8875296     | CIRCLIP             |                 | 1    |             |                         |
| 9    | 8873041      | SLIDING SLEEVE      |                 | 1    |             |                         |
| 10   | X8870341     | CIRCLIP             |                 | 1    |             |                         |
| 11   | 8875881      | FIXED HUB           |                 | 1    |             |                         |
| 12   | 8870444      | SPRING COMPRESSION  |                 | 9    |             |                         |
| 13   | 8870352      | PLUNGER             |                 | 9    |             |                         |
| 14   | X8870355     | ROLLER              |                 | 9    |             |                         |

| Item | Current Part | Description    | Replaced Part | Qty. | Notes | Kits/Assys Where Needed |
|------|--------------|----------------|---------------|------|-------|-------------------------|
| 15   | X8870844     | BEARING        |               | 1    |       |                         |
| 16   | X8870344     | CIRCLIP        |               | 1    |       |                         |
| 17   | GMX-8-0806   | SCREW          |               | 3    | M8X20 |                         |
| 18   | 8870848      | RETAINER       |               | 3    |       |                         |
| 19   | 8875646      | REACTION PLATE |               | 1    |       |                         |
| 20   | 8874037      | SYNCHRO FLANGE |               | 1    |       |                         |
| 21   | X8873993     | CIRCLIP        |               | 1    |       |                         |
| 22   | 8870808      | SPACER         |               | 1    |       |                         |

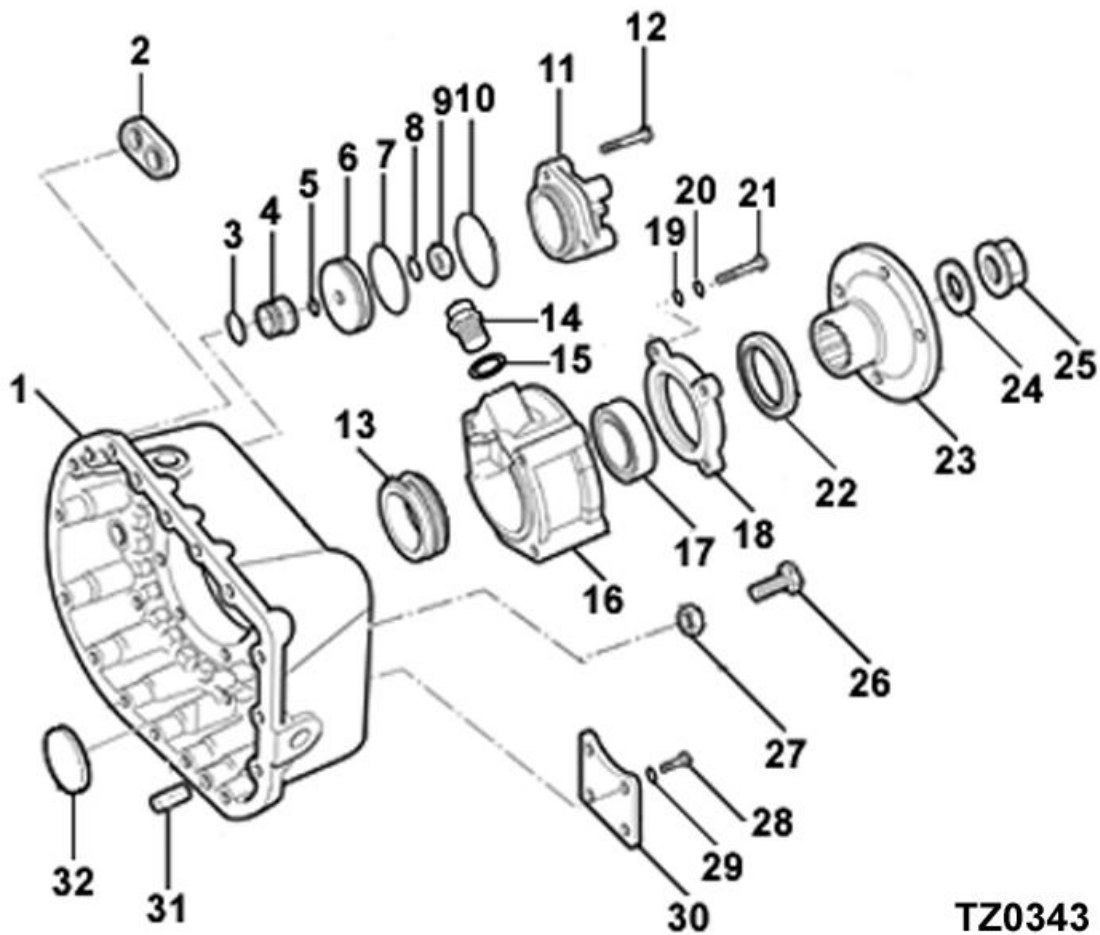


TZ0345

## RANGE CONTROL ASSY.

| Item | Current Part | Description         | Replaced Part | Qty. | Notes             | Kits/Assys Where Needed |
|------|--------------|---------------------|---------------|------|-------------------|-------------------------|
| 0    | U8877708     | RANGE CONTROL ASSY. |               | 1    |                   |                         |
| 1    | X8880151     | SCREW SPIRAL        | GX8880151     | 2    |                   |                         |
| 2    | 8880659      | MOUNTING BRACKET    |               | 1    |                   |                         |
| 3    | GX2013517    | PIPE PLUG           |               | 1    | 1/8               |                         |
| 4    | X8880109     | FILTER REGULATOR    |               | 1    |                   |                         |
| 5    | X2013028     | ADAPTOR             |               | 5    | ST 1/8 NPT (VOSS) |                         |
| 6    | U8877709     | HOSE ASSY.          |               | 1    | 970 MM LENGTH     |                         |
| 7    | X8883138     | ADAPTOR G1/8        |               | 1    |                   |                         |
| 8    | X8877525     | BREATHER            |               | 2    | 1/8 WITH FLAP     |                         |
| 9    | F96387       | RANGE VALVE         |               | 1    |                   |                         |
| 10   | X2013025     | STRAIGHT ADAPTOR    |               | 4    |                   |                         |
| 11   | U8875452     | HOSE ASSY.          |               | 1    | 600 MM LENGTH     |                         |
| 12   | U8875453     | HOSE ASSY.          |               | 1    | 700MM LENGTH      |                         |
| 13   | GMX-9-1005   | NUT                 |               | 1    | M10X1.5           |                         |

| Item | Current Part | Description  | Replaced Part | Qty. | Notes             | Kits/Assys Where Needed |
|------|--------------|--------------|---------------|------|-------------------|-------------------------|
| 14   | GX8879212    | LIFTING EYE  |               | 1    | 15 MM             |                         |
| 15   | 12152        | HOSE CLAMP   |               | 1    |                   |                         |
| 16   | GMX-8-1088   | SCREW        |               | 1    | M12X25 HEX FLG HD |                         |
| 17   | DMX-8-1001   | SCREW        |               | 1    | M10 X 20 HEX HD   |                         |
| 17   | GMX-8-1088   | SCREW        |               | 1    | M12X25 HEX FLG HD |                         |
| 18   | DX11245      | WASHER       |               | 1    | M10               |                         |
| 18   | GX11245      | WASHER PLAIN |               | 1    | M10               |                         |
| 19   | 8876407      | CLAMP HOSE   |               | 2    |                   |                         |



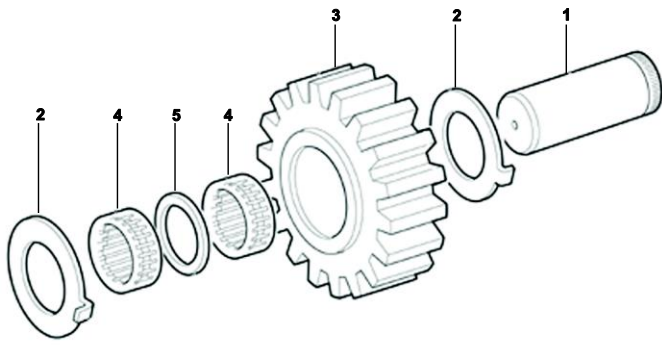
**TZ0343**

**REAR CASE ASSY.**

| Item | Current Part | Description           | Replaced Part | Qty. | Notes    | Kits/Assys Where Needed |
|------|--------------|-----------------------|---------------|------|----------|-------------------------|
| 0    | U8877741     | REAR CASE ASSY.       |               | 1    |          |                         |
| 1    | 8874367      | REAR CASING           |               | 1    |          |                         |
| 2    | 8874026      | LIFTING EYE           |               | 2    |          |                         |
| 3    | X8875292     | O-RING                |               | 1    |          |                         |
| 4    | 8878240      | BUSH                  | 8875293       | 1    |          |                         |
| 5    | X8871258     | O-RING                |               | 1    | DIA.24,5 |                         |
| 6    | 8875179      | PISTON RANGE CYLINDER |               | 1    |          |                         |
| 7    | 14344        | PISTON O RING         |               | 1    |          |                         |
| 8    | 14345        | PISTON O RING         |               | 1    |          |                         |
| 9    | GMX-9-1602   | NUT                   |               | 1    | M16      |                         |
| 10   | X8873008     | O-RING                |               | 1    |          |                         |

| Item | Current Part | Description            | Replaced Part | Qty. | Notes             | Kits/Assys Where Needed |
|------|--------------|------------------------|---------------|------|-------------------|-------------------------|
| 11   | 8875430      | CYLINDER-RANGE         |               | 1    |                   |                         |
| 12   | GMX-8-1094   | BOLT                   |               | 3    | M10X55 HEX FLG HD |                         |
| 13   | 8880181      | TACHOGRAPH ROTOR       |               | 1    |                   |                         |
| 14   | X8877573     | PLUG                   |               | 1    | M18 X 1.5 X 8     |                         |
| 15   | 8883522      | WASHER                 | F96063        | 1    |                   |                         |
| 16   | 8874013      | ELECTR. SPEEDO HOUSING |               | 1    |                   |                         |
| 17   | X8872721     | BEARING                |               | 1    |                   |                         |
| 18   | 8871992      | REAR COVER             |               | 1    |                   |                         |
| 19   | DX11245      | WASHER                 |               | 4    | M10               |                         |
| 20   | DMX-3-1001   | WASHER SPRING          |               | 4    | M10               |                         |
| 21   | DMX-8-1012   | BOLT                   |               | 3    | M10 X 100 HEX HD  |                         |
| 21   | DMX-8-1035   | BOLT                   |               | 1    | M10 X 100 HEX HD  |                         |
| 22   | X8872722     | OIL SEAL               |               | 1    |                   |                         |
| 23   | 8877079      | COUPLING FLANGE        |               | 1    |                   |                         |
| 24   | 8877047      | SPACER                 |               | 1    | 77 X 57 X 6       |                         |
| 25   | GMX-8-10111  | BOLT                   |               | 1    | M10X65 HEX FLG HD |                         |
| 25   | GX8870553    | NUT                    |               | 1    |                   |                         |
| 26   | GMX-8-1080   | BOLT                   |               | 17   | M10X58            |                         |
| 27   | GMX-9-1005   | NUT                    |               | 17   | M10X1.5           |                         |
| 28   | DMX-8-1209   | SCREW                  |               | 4    | M12 X 25 HEX HD   |                         |
| 29   | DMX-3-1201   | SPRING WASHER          |               | 4    | M12               |                         |
| 30   | 8873917      | LAYSHAFT COVER REAR    |               | 1    |                   |                         |
| 31   | X8870543     | DOWEL                  |               | 2    | 16,0 DI X 30,5    |                         |
| 32   | 14373        | DISC MAGNET            |               | 1    |                   |                         |

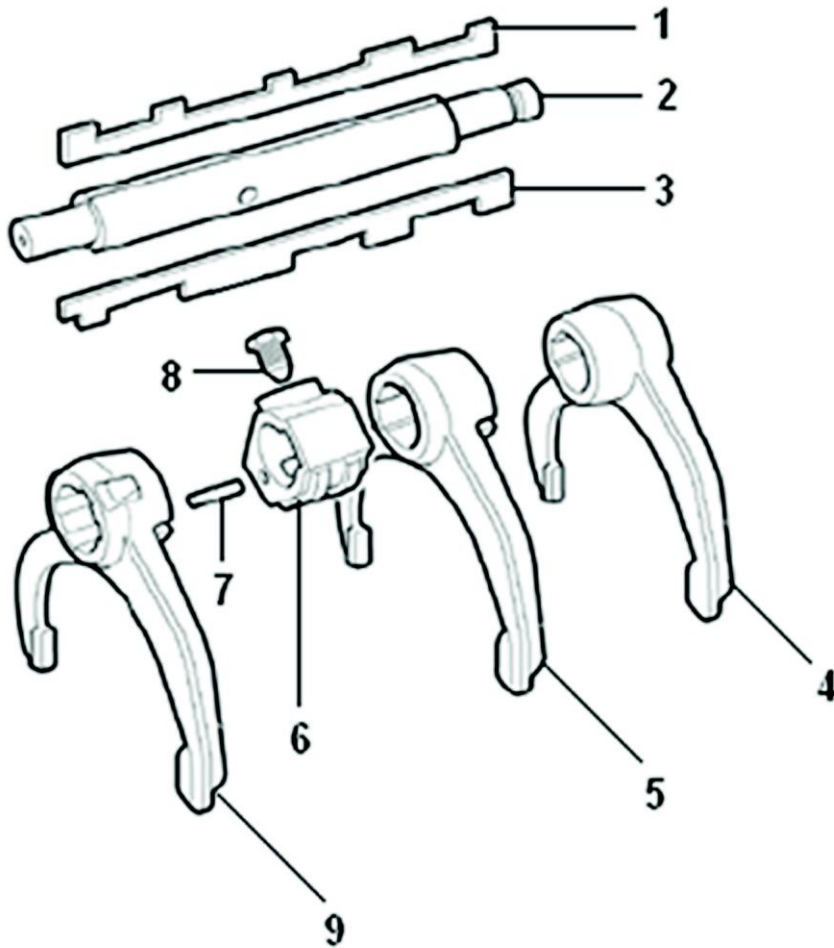




TZ0007

## REVERSE IDLER SHAFT

| Item | Current Part | Description         | Replaced Part | Qty. | Notes | Kits/Assys Where Needed |
|------|--------------|---------------------|---------------|------|-------|-------------------------|
| 1    | 8880069      | REVERSE IDLER SHAFT |               | 1    |       |                         |
| 2    | 8870343      | THRUST WASHER       |               | 2    |       |                         |
| 3    | 8876457      | REVERSE IDLER GEAR  |               | 1    |       |                         |
| 4    | X8872478     | NEEDLE ROLLER BRG   |               | 2    |       |                         |
| 5    | 8872479      | SPACER              |               | 1    |       |                         |



**PU0009**

**SELECTOR ASSY.**

| Item | Current Part | Description             | Replaced Part | Qty. | Notes         | Kits/Assys Where Needed |
|------|--------------|-------------------------|---------------|------|---------------|-------------------------|
| 0    | U8875631     | SELECTOR ASSY.          |               | 1    |               |                         |
| 1    | 8872731      | SELECTOR KEY            |               | 1    |               |                         |
| 2    | 8872734      | SELECTOR SHAFT          |               | 1    |               |                         |
| 3    | 8872732      | INTERLOCK KEY           |               | 1    |               |                         |
| 4    | 8872006      | FORK<br>CRAWLER/REVERSE |               | 1    |               |                         |
| 5    | 8872007      | FORK 1ST/2ND            |               | 1    |               |                         |
| 6    | 8872083      | SELECTOR BLOCK          |               | 1    |               |                         |
| 7    | X8870277     | DOWEL                   |               | 1    |               |                         |
| 8    | 8873691      | SCREW                   |               | 1    | M10X23 HEX HD |                         |
| 9    | 8872634      | FORK 3RD/4TH            |               | 1    |               |                         |



Copyright Eaton Corporation, 2009.  
Eaton hereby grants their customers,  
vendors, or distributors permission to  
freely copy, reproduce and/or distribute  
this document in printed format. It may  
be copied only in its entirety without  
any changes or modifications. THIS  
INFORMATION IS NOT INTENDED FOR  
SALE OR RESALE, AND THIS NOTICE  
MUST REMAIN ON ALL COPIES.

