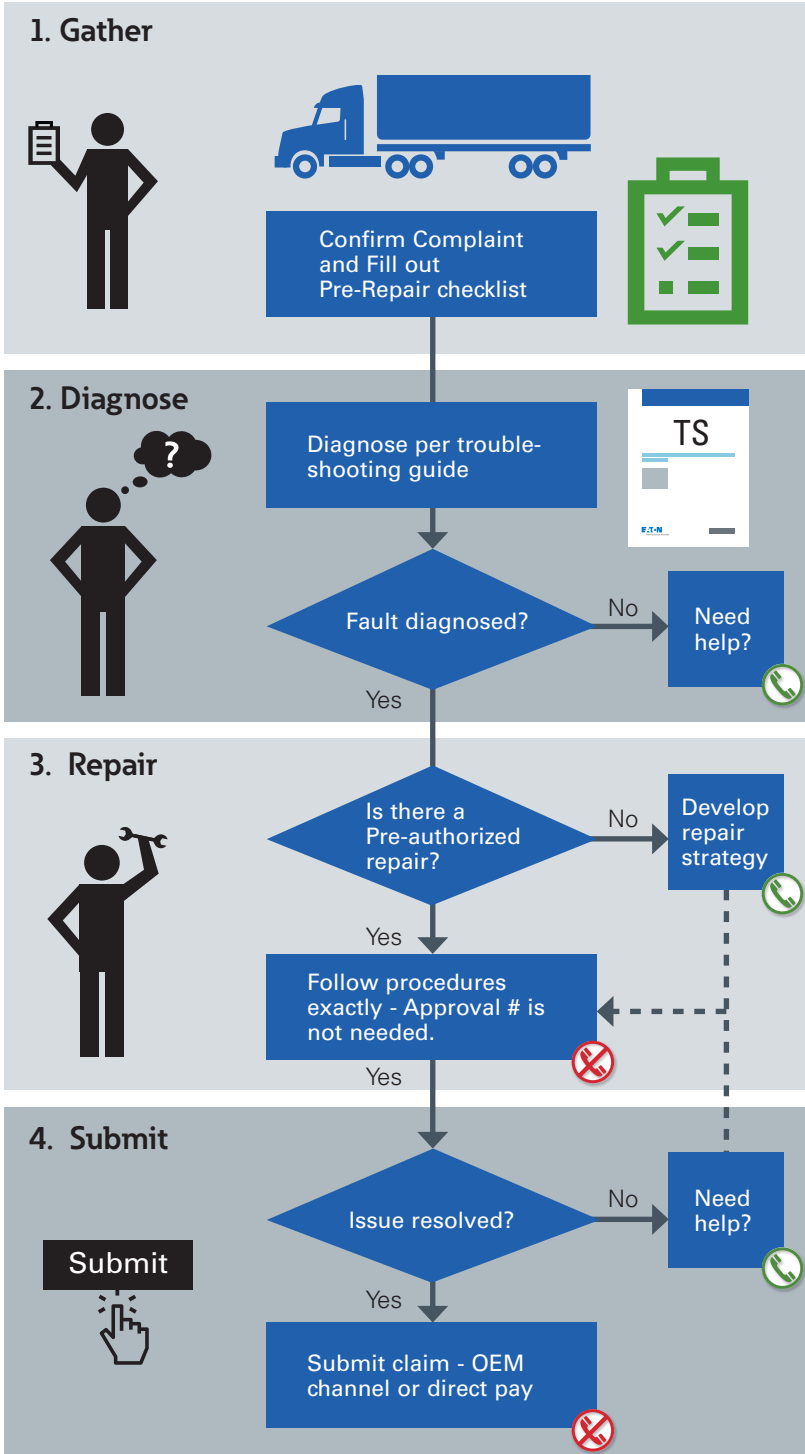


Eaton warranty flowchart



TIPS

- Use TCWY-0099 & Roadranger.com/Warranty.
- To define your warranty type, use TCWY-0900.
- To determine the specifics of your coverage, use TCWY-0600.
- To start a repair plan, use TCWY-1051.
- When replacing a warranty clutch, follow CLSM-0200 to ensure correct payment.
- Do not call:
 - ❌ If software updated without a transmission complaint present.
 - ❌ If repairs are complete and the technician did not require Real time Warranty Diagnostic Guidance.
 - ❌ If checking status of a claim, use dealer code and work order number in claim lookup section.

www.roadranger.com/warranty

