

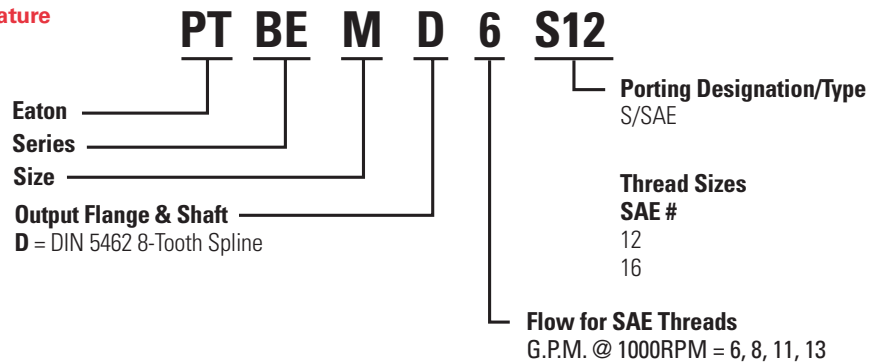
Bezares Pumps for 3940 Series PTO



BEM Series Bushing Pumps



Nomenclature



Pump Type		BEM 6 (23)	BEM 8 (30)	BEM 11 (40)
Displacement cu in/rev (cm3/rev)		1.403 (23)	1.769 (29)	2.501 (41)
Flow Rate G.P.M. (L/min)		6 (23)	7.6 (30)	10.8 (40)
Max. Pressure PSI (bar)	Max. cont.	3600 (250)	3500 (240)	3000 (210)
	Max. peak (5 sec)	4400 (300)	4200 (290)	3800 (260)
Speed RPM	Min.	500		
	Max.	2000		
Porting	SAE	#12	#16	
Weight Lb. (Kg)		14.77 (6.7)	15.65 (7.1)	17.19 (7.8)

Bezares Pumps for 3940 Series PTO

FR Series Bent Axis Piston Pump



Pump Type		5.5	8.4	10.4*	15.8*
Code (clockwise)	DIN 5462	5041806	5042006	5042206	5042406
Code (counterclockwise)		5041906	5042106	5042306	5042506
Displacement (cu in/rev)		1.22	1.83	2.44	3.66
Pressure Max. (PSI)	DIN 5462	5076	5076	5076	5076
Speed (RPM)	Max. Cont.	2000	1800	1800	1500
	Max. Int.	2600	2400	2400	2200
Power (Kw)	Cont.	25	36	33	40
	Max. Int.	35	48	46	56
Weight (Lb.)	DIN 5462	16.75	16.97	20.94	22.04

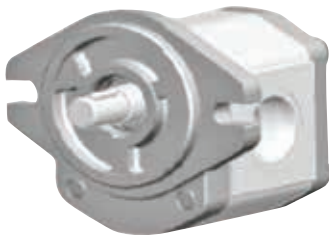
* FR10.4 and FR15.8 DO NOT FIT on 4WD models

Hydraulic Suction Fittings for FR Series

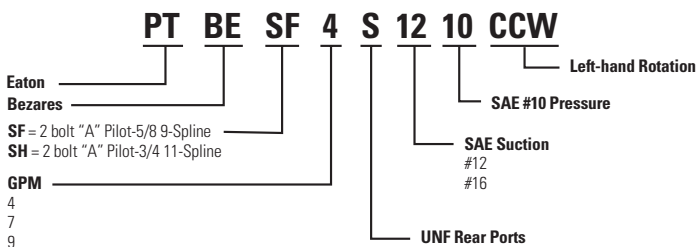


Note: Part #PT9044916 is for FR10.4 (5042306) and FR15.8 (5042506) only. For suction fitting on FR5.5 and FR8.4, use a flared #12 to #20.

SAE "A" Mount



Nomenclature



Part Number	PSI INT.
PTBESF4S1210CCW	4060
PTBESF7S1210CCW	2900
PTBESF9S1210CCW	3625
PTBESH4S1210CCW	4060
PTBESH7S1610CCW	2900
PTBESH9S1610CCW	3625

BACKED BY
Roadranger
SUPPORT

For spec'ing or service assistance,
call 1-800-826-HELP (4357) or visit
www.eatonpartsonline.com.

Eaton
Vehicle Group
13100 E. Michigan Ave.
Kalamazoo, MI 49053 USA

© 2021 Eaton
All Rights Reserved. Printed in USA.
APSL0352 0921

Note: Features and specifications listed in this document are subject to change without notice. Although every attempt has been made to ensure the accuracy of information contained within, Eaton makes no representation about the completeness, correctness or accuracy and assumes no responsibility for any errors or omissions. Features and functionality may vary depending on selected options.

Eaton and Roadranger are registered trademarks of Eaton. All trademarks, logos and copyrights are those of their respective owners.