

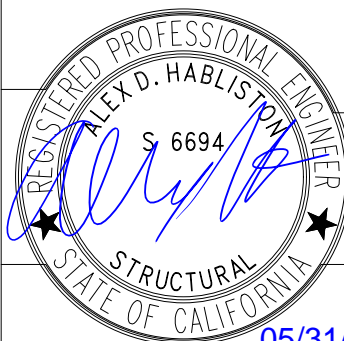
OVERALL LOAD TABLE (1 of 2)

TABLE
1LOAD

Maximum Brace Loads		Allowable Values				
Configuration		45 deg Brace from Horiz Tension (lb) Comp. (lb)		60 deg Brace from Horiz Tension (lb) Comp. (lb)		
* * *	General Bracket Connections	Fig 981 w/ 3/8" to 7/8" Rod	1263	1843	1320	1227
		Fig 985 w/ 3/8" to 5/8" Rod	813	1030	693	1123
		Fig 986	787	847	797	927
		Fig 990 w/ 3/16" Dia Cable	1387	0	1507	0
		Fig 991 w/ 3/16" Dia Cable	1023	0	1073	0
* * *	Fig 1 Bracket Connections	4" Clevis Hanger/ Fig 980 w/ 5/8" Rod	1105	303	864	310
		6" Clevis Hanger/ Fig 980 w/ 3/4" Rod	1175	665	1181	503
		8" Clevis Hanger/ Fig 980 w/ 3/4" Rod	1540	450	1073	390

LARR APPROVAL

1. A factor of Safety of 3.0 is applied to the lowest of ultimate loads.



COOPER B-Line | TOLCO
1375 SAMPSON AVENUE | CORONA, CA. 92879
P: (951) 737-5599 | F: (951) 737-0330

DATE: MAY 31, 2019

05/31/2019

LARR 25949

Page 1 of 32

* Deleted by the City of Los Angeles

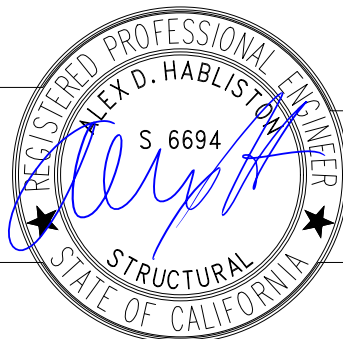
OVERALL LOAD TABLE (2 of 2)

TABLE
2LOAD

Maximum Loads		Allowable Values					
PART NUMBER		CLAMP			GUIDE		
		Design Load	Pt	PI	Design Load	Pt	PI
Hold Down Clamp	9ZN-1205	570	482	155	570	482	--
	9ZN-1208	570	482	155	570	482	--
	9ZN-1241	1031	1240	702	--	--	--
	B355	1196	503	180	--	--	--

LARR APPROVAL

1. A factor of Safety of 3.0 is applied to the lowest of ultimate loads.



COOPER B-Line | **TOLCO**
 1375 SAMPSON AVENUE | CORONA, CA. 92879
 P: (951) 737-5599 | F: (951) 737-0330

DATE: MAY 31, 2019

TRANSVERSE RIGID BRACING FOR SINGLE HUNG
PIPE OR CONDUIT WITH CLEVIS HANGER

DETAIL
1LAT 45

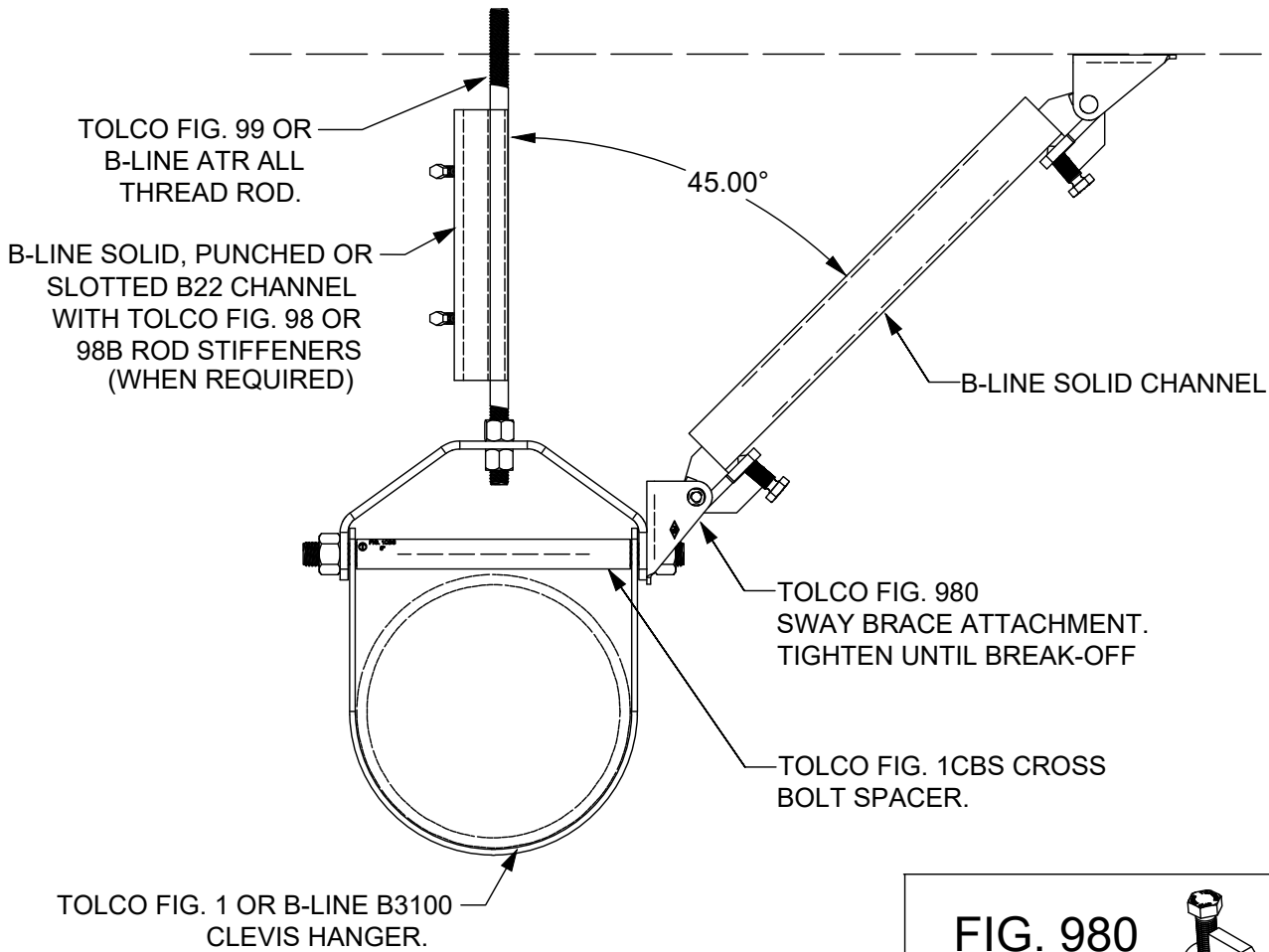
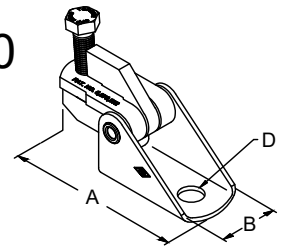


FIG. 980



Part Number	A		B		D	
	in.	(mm)	in.	(mm)	in.	(mm)
980-1/2	5 1/4"	(133.3)	1 7/8"	(47.6)	1 7/32"	(13.5)
980-5/8	5 1/4"	(133.3)	1 7/8"	(47.6)	1 1/16"	(17.5)
980-3/4	5 1/4"	(133.3)	1 7/8"	(47.6)	1 3/16"	(20.5)

To Install: Place the Fig. 980 onto the "bracing member". Tighten the set screw until the head breaks off. Attachment can pivot for adjustment to proper brace angle.

PIPE SIZE	4"	6"	8"
MAX LOAD PER BRACE (lbs)	303	665	450
SAFETY FACTOR: 3			

LARR APPROVAL



COOPER B-Line | **TOLCO**
1375 SAMPSON AVENUE | CORONA, CA. 92879
P: (951) 737-5599 | F: (951) 737-0330

DATE: MAY 31, 2019

05/31/2019

TRANSVERSE RIGID BRACING FOR SINGLE HUNG
PIPE OR CONDUIT WITH CLEVIS HANGER

DETAIL
1LAT 30

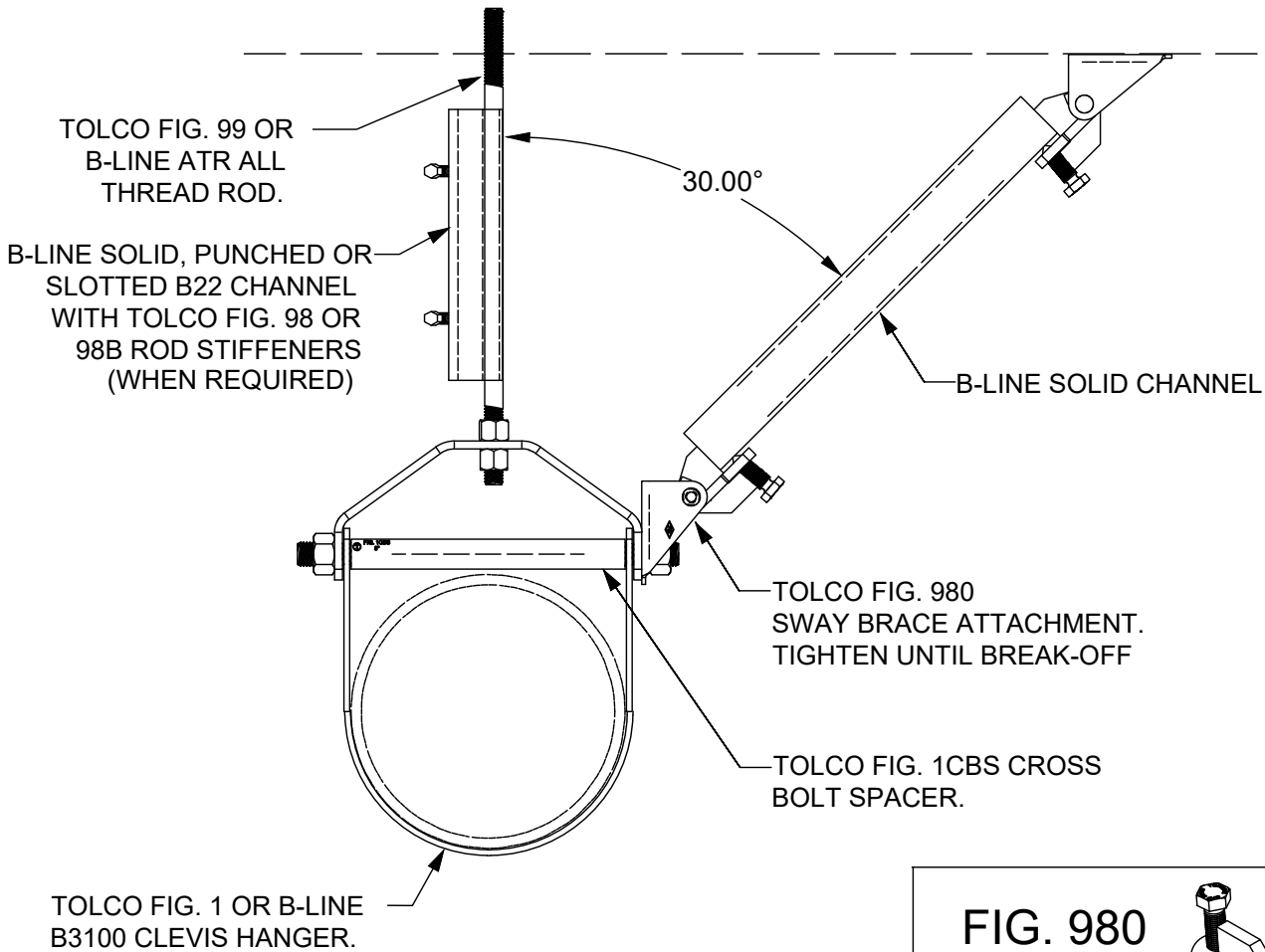
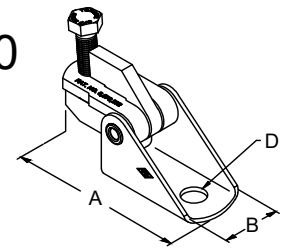


FIG. 980

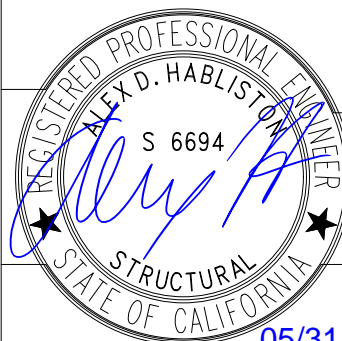


Part Number	A		B		D	
	in.	(mm)	in.	(mm)	in.	(mm)
980-1/2	5 1/4"	(133.3)	1 7/8"	(47.6)	1 7/32"	(13.5)
980-5/8	5 1/4"	(133.3)	1 7/8"	(47.6)	1 1/16"	(17.5)
980-3/4	5 1/4"	(133.3)	1 7/8"	(47.6)	1 3/16"	(20.5)

To Install: Place the Fig. 980 onto the "bracing member". Tighten the set screw until the head breaks off. Attachment can pivot for adjustment to proper brace angle.

PIPE SIZE	4"	6"	8"
MAX LOAD PER BRACE (lbs)	310	503	390
SAFETY FACTOR: 3			

LARR APPROVAL



COOPER B-Line | **TOLCO**
1375 SAMPSON AVENUE | CORONA, CA. 92879
P: (951) 737-5599 | F: (951) 737-0330

DATE: MAY 31, 2019

05/31/2019

TRANSVERSE RIGID BRACING FOR TRAPEZE SUPPORTED PIPE OR CONDUIT

DETAIL
2 LAT 45

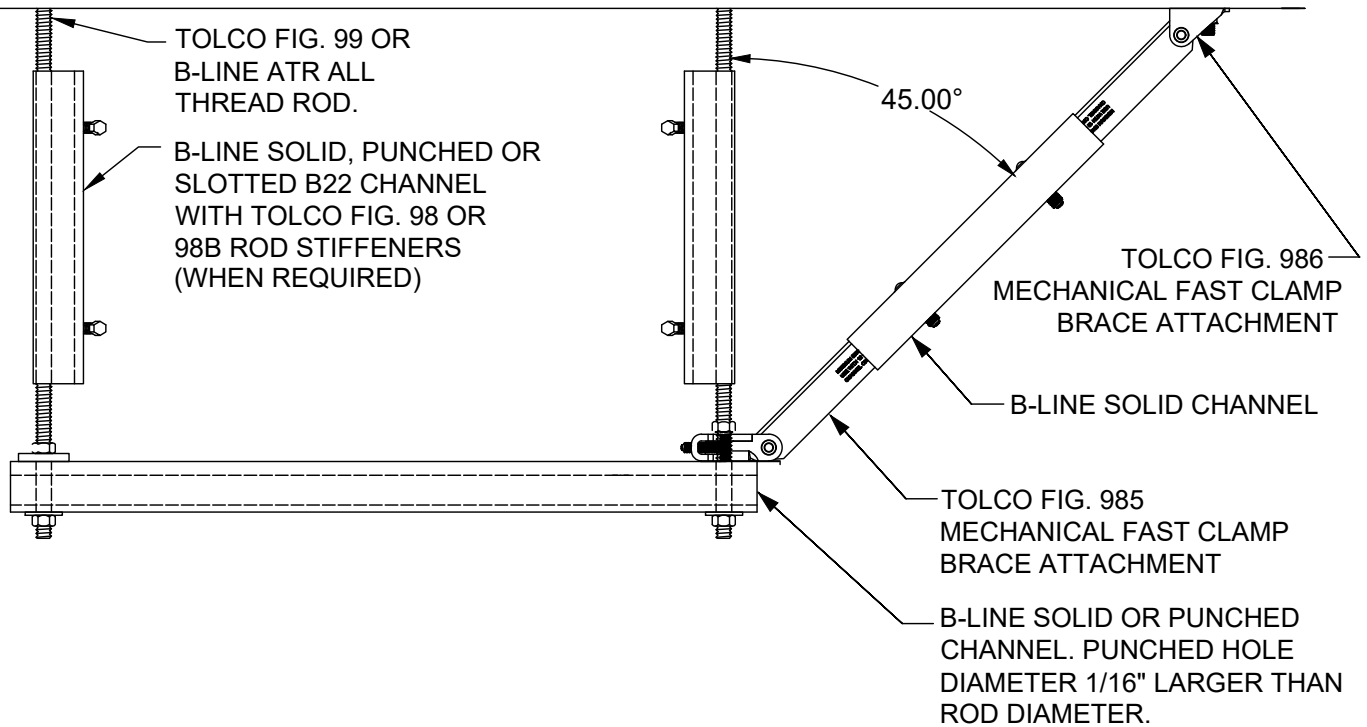
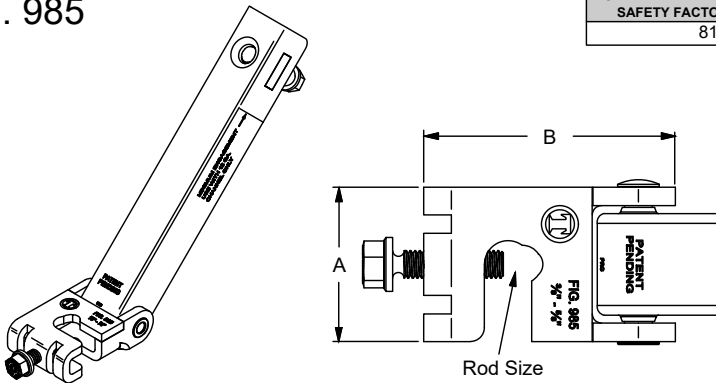


FIG. 985

LOAD PER BRACE (lbs)
SAFETY FACTOR: 3
813

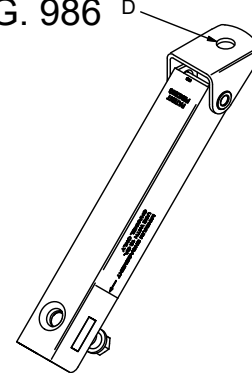


Part Number	Rod Size	A		B	
		in.	(mm)	in.	(mm)
985-S	3/8" thru 5/8"	2"	(50.8)	11/2"	(38.1)

To Install: Slip the open side of the 985 yoke onto the all thread rod above the top of the trapeze. Tighten set screw until head breaks off. Secure with hex nut. Insert channel brace into the 981 arm and adjust to desired length ensuring the channel passes minimum engagement indicator. Tighten set screw until head breaks off.

FIG. 986

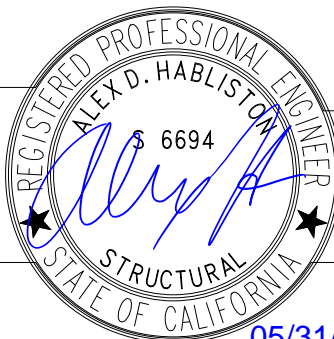
LOAD PER BRACE (lbs)
SAFETY FACTOR: 3
787



Part Number	Rod Size	Hole Dia. D	
		in.	(mm)
986-1/2	1/2"	9/16"	(14.3)
986-5/8	5/8"	11/16"	(17.5)
986-3/4	3/4"	13/16"	(20.6)

Insert channel brace into the 981 arm and adjust to desired length ensuring the channel passes minimum engagement indicator. Tighten set screw until head breaks off.

LARR APPROVAL



COOPER B-Line | TOLCO
1375 SAMPSON AVENUE | CORONA, CA. 92879
P: (951) 737-5599 | F: (951) 737-0330

DATE: MAY 31, 2019

05/31/2019

TRANSVERSE RIGID BRACING FOR TRAPEZE SUPPORTED PIPE OR CONDUIT

DETAIL
2 LAT 30

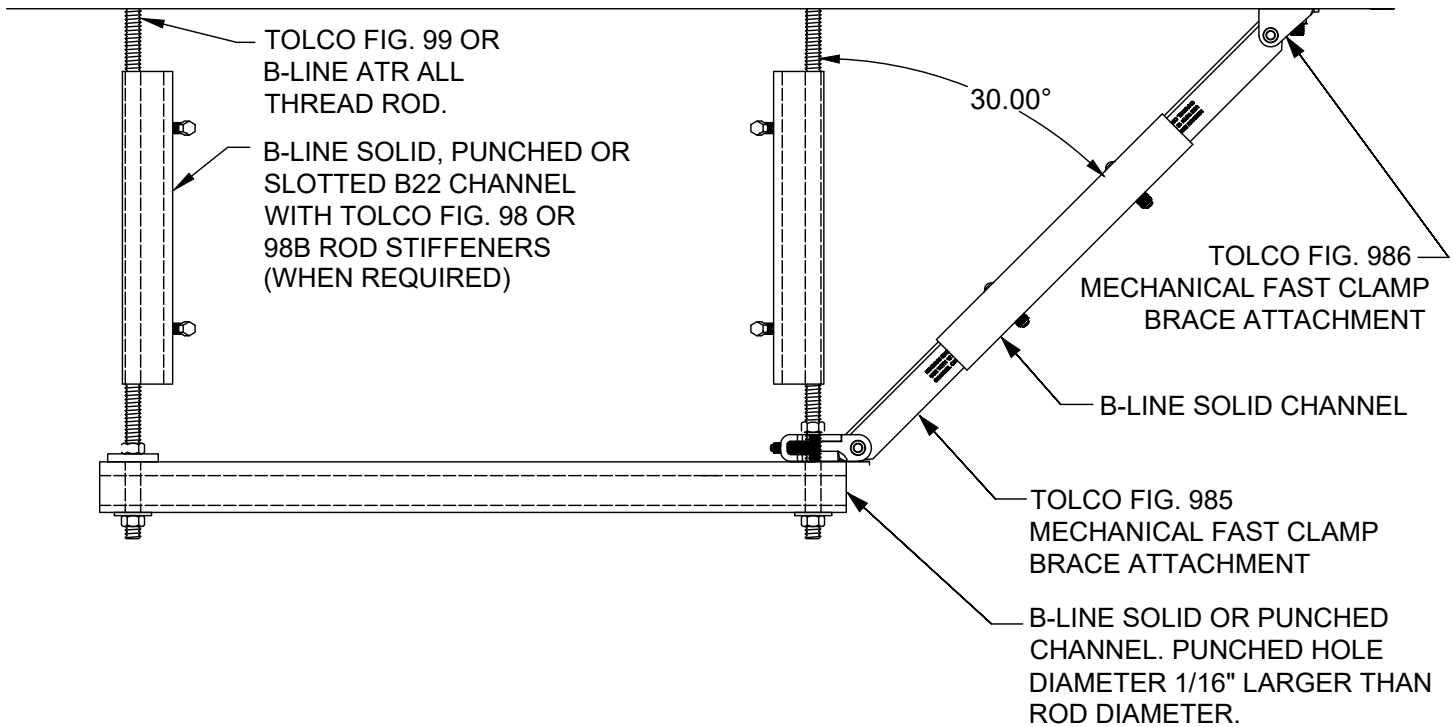
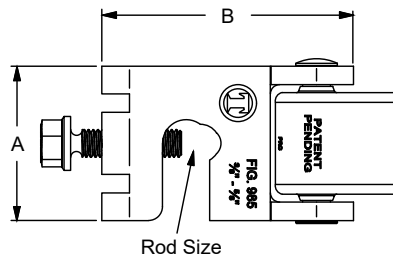
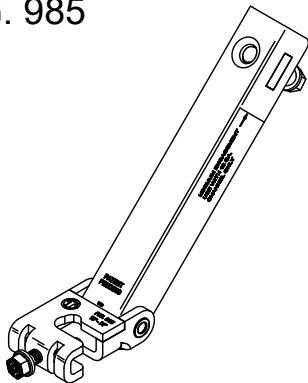


FIG. 985

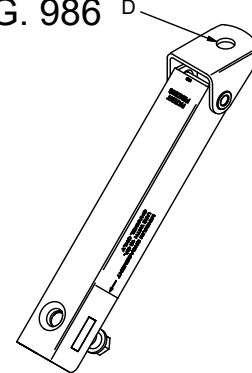


LOAD PER BRACE (lbs)
SAFETY FACTOR: 3
693

Part Number	Rod Size	A		B	
		in.	(mm)	in.	(mm)
985-S	3/8" thru 5/8"	2"	(50.8)	11/2"	(38.1)

To Install: Slip the open side of the 985 yoke onto the all thread rod above the top of the trapeze. Tighten set screw until head breaks off. Secure with hex nut. Insert channel brace into the 981 arm and adjust to desired length ensuring the channel passes minimum engagement indicator. Tighten set screw until head breaks off.

FIG. 986



LOAD PER BRACE (lbs)
SAFETY FACTOR: 3
797

Part Number	Rod Size	Hole Dia. D	
		in.	(mm)
986-1/2	1/2"	9/16"	(14.3)
986-5/8	5/8"	11/16"	(17.5)
986-3/4	3/4"	13/16"	(20.6)

Insert channel brace into the 981 arm and adjust to desired length ensuring the channel passes minimum engagement indicator. Tighten set screw until head breaks off.

LARR APPROVAL



COOPER B-Line | TOLCO
1375 SAMPSON AVENUE | CORONA, CA. 92879
P: (951) 737-5599 | F: (951) 737-0330

DATE: MAY 31, 2019

05/31/2019

LONGITUDINAL RIGID BRACING FOR TRAPEZE SUPPORTED PIPE OR CONDUIT

DETAIL
2 LONG 45

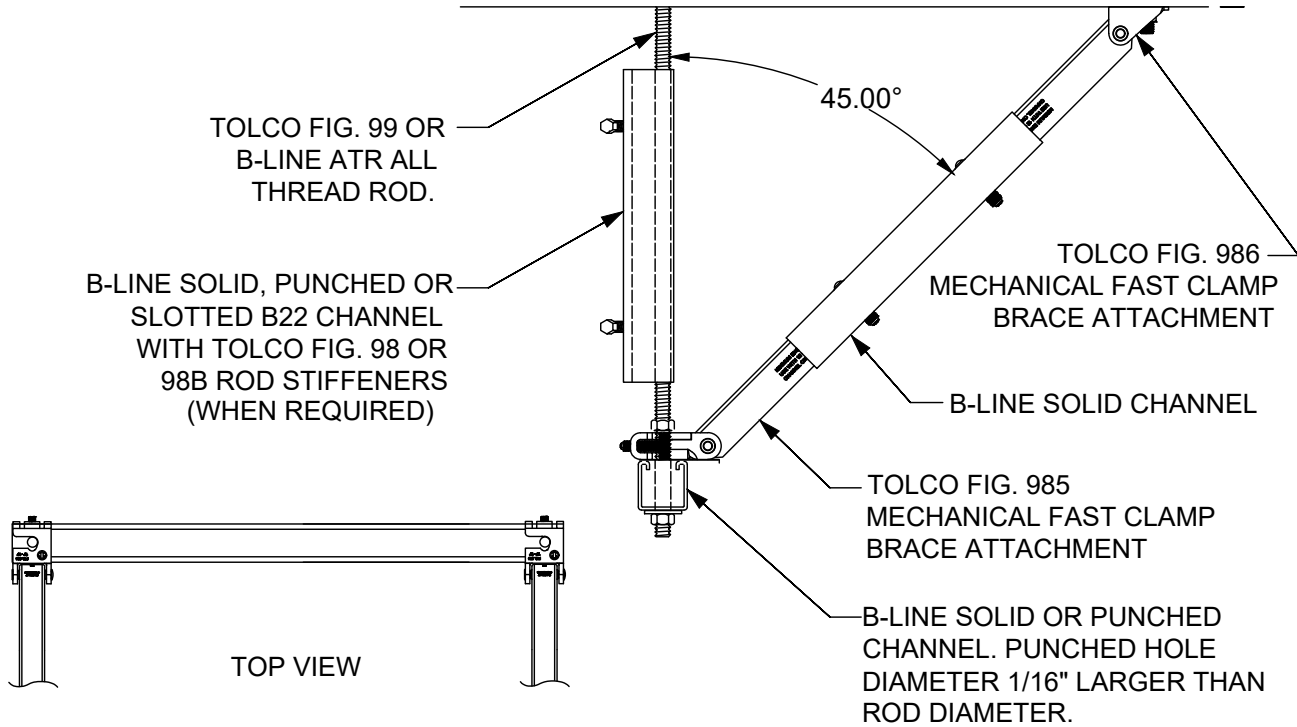
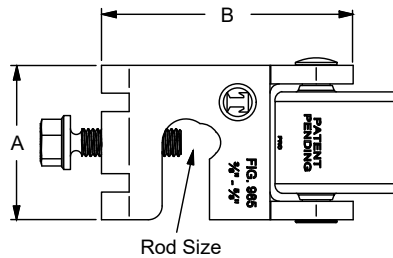
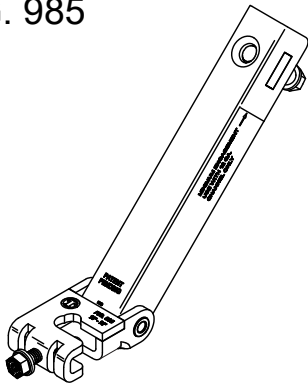


FIG. 985

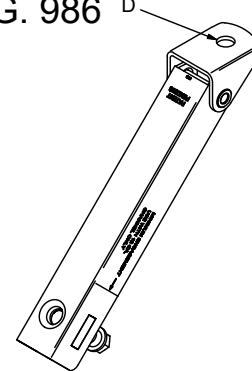


LOAD PER BRACE (lbs)
SAFETY FACTOR: 3
813

Part Number	Rod Size	A	B
		in. (mm)	in. (mm)
985-S	3/8" thru 5/8"	2" (50.8)	11/2" (38.1)

To Install: Slip the open side of the 985 yoke onto the all thread rod above the top of the trapeze. Tighten set screw until head breaks off. Secure with hex nut. Insert channel brace into the 981 arm and adjust to desired length ensuring the channel passes minimum engagement indicator. Tighten set screw until head breaks off.

FIG. 986

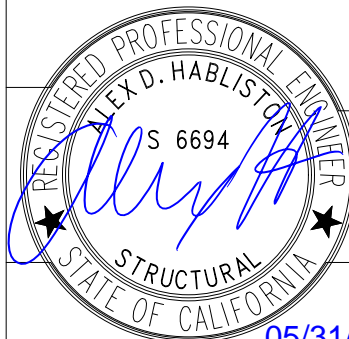


LOAD PER BRACE (lbs)
SAFETY FACTOR: 3
787

Part Number	Rod Size	Hole Dia. D
		in. (mm)
986-1/2	1/2"	9/16" (14.3)
986-5/8	5/8"	11/16" (17.5)
986-3/4	3/4"	13/16" (20.6)

Insert channel brace into the 981 arm and adjust to desired length ensuring the channel passes minimum engagement indicator. Tighten set screw until head breaks off.

LARR APPROVAL



COOPER B-Line | TOLCO
1375 SAMPSON AVENUE | CORONA, CA. 92879
P: (951) 737-5599 | F: (951) 737-0330

DATE: MAY 31, 2019

05/31/2019

LONGITUDINAL RIGID BRACING FOR TRAPEZE SUPPORTED PIPE OR CONDUIT

DETAIL
2 LONG 30

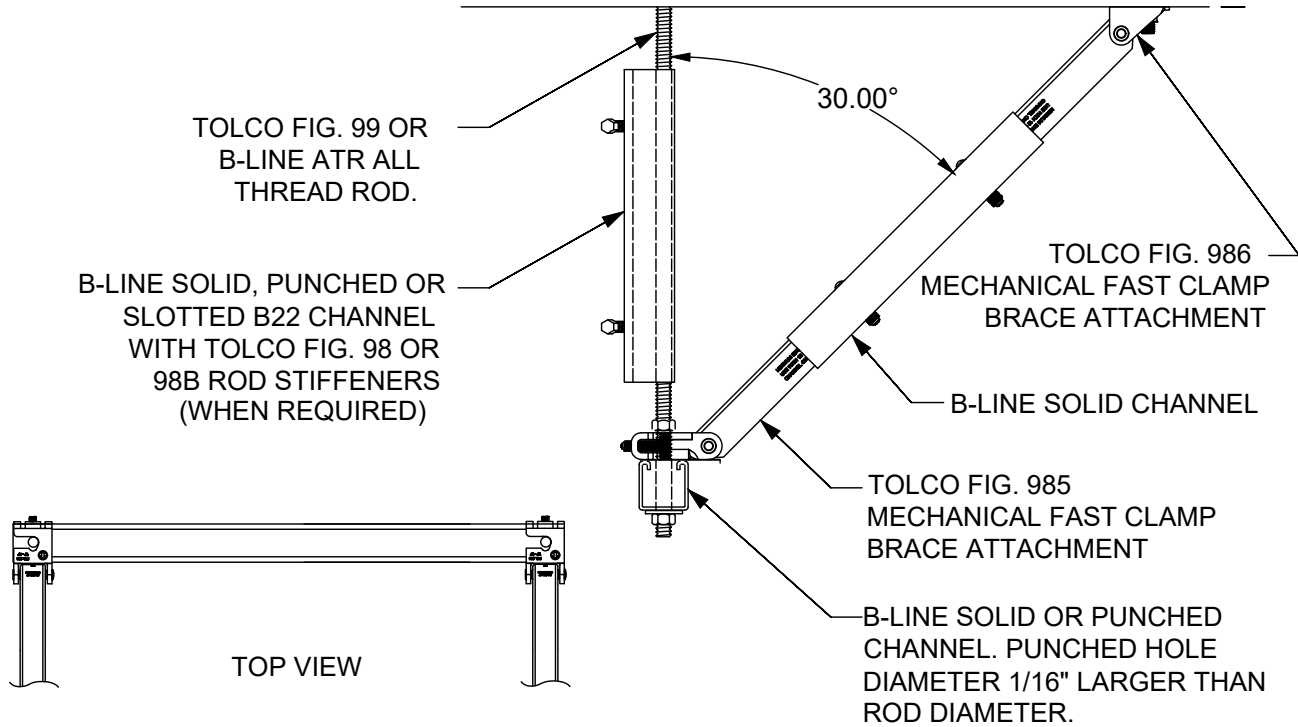
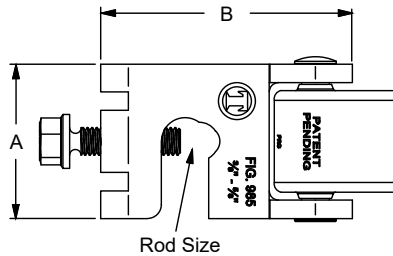
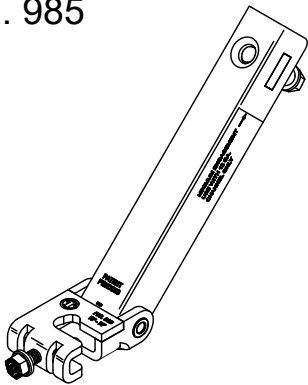


FIG. 985

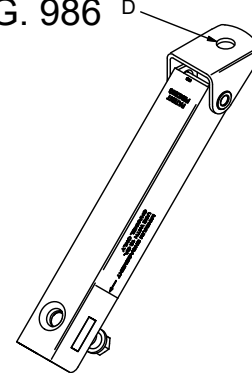


LOAD PER BRACE (lbs)
SAFETY FACTOR: 3
693

Part Number	Rod Size	A	B
		in. (mm)	in. (mm)
985-S	3/8" thru 5/8"	2" (50.8)	11/2" (38.1)

To Install: Slip the open side of the 985 yoke onto the all thread rod above the top of the trapeze. Tighten set screw until head breaks off. Secure with hex nut. Insert channel brace into the 981 arm and adjust to desired length ensuring the channel passes minimum engagement indicator. Tighten set screw until head breaks off.

FIG. 986

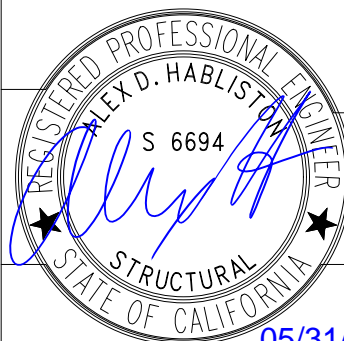


LOAD PER BRACE (lbs)
SAFETY FACTOR: 3
797

Part Number	Rod Size	Hole Dia. D
		in. (mm)
986-1/2	1/2"	9/16" (14.3)
986-5/8	5/8"	11/16" (17.5)
986-3/4	3/4"	13/16" (20.6)

Insert channel brace into the 981 arm and adjust to desired length ensuring the channel passes minimum engagement indicator. Tighten set screw until head breaks off.

LARR APPROVAL



COOPER B-Line | TOLCO
1375 SAMPSON AVENUE | CORONA, CA. 92879
P: (951) 737-5599 | F: (951) 737-0330

DATE: MAY 31, 2019

05/31/2019

TRANSVERSE RIGID BRACING FOR TRAPEZE
SUPPORTED PIPE OR CONDUIT

DETAIL
3 LAT 45

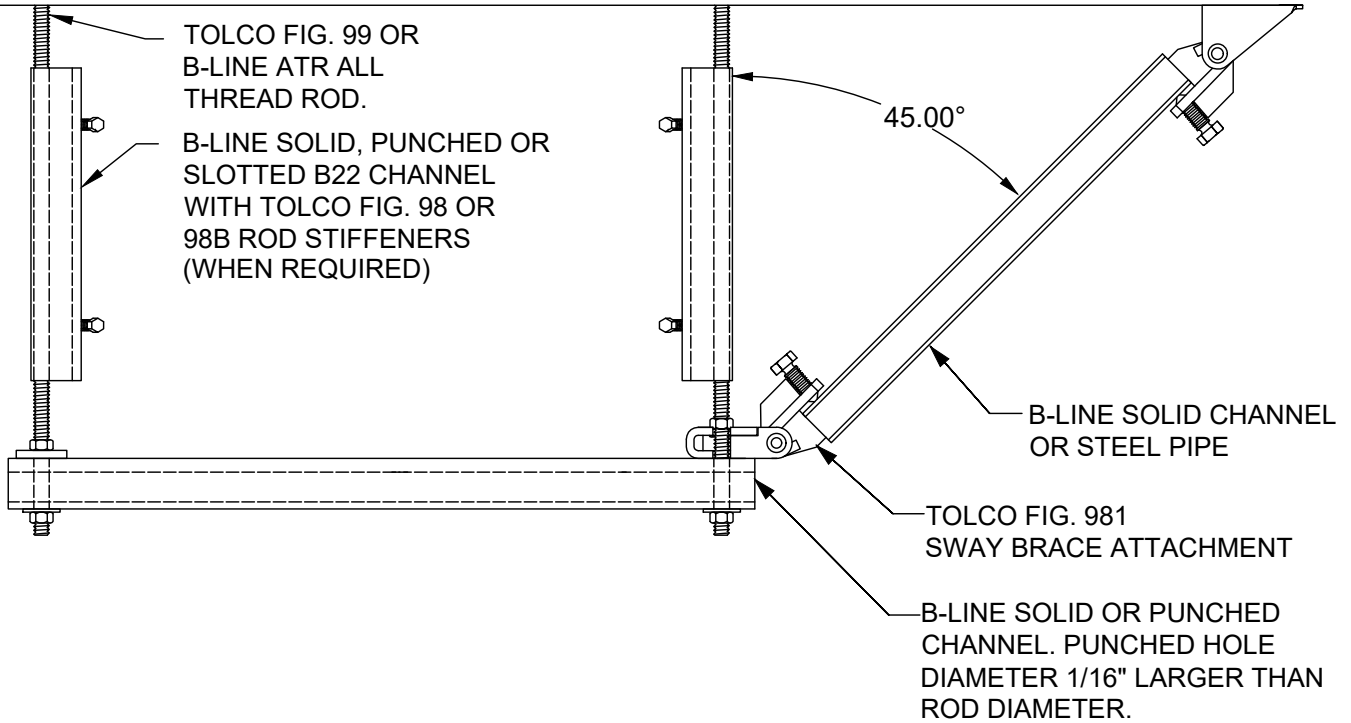
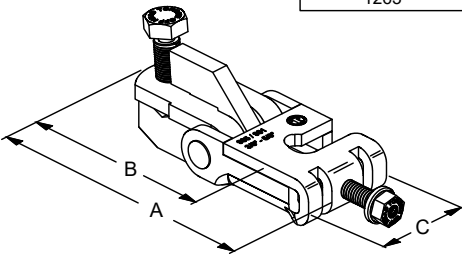


FIG. 981

LOAD PER BRACE (lbs)
SAFETY FACTOR: 3
1263



Part Number	Rod Size Range	A		B		C	
		in.	(mm)	in.	(mm)	in.	(mm)
981-S	3/8" thru 5/8"	5 1/8"	(130.2)	4 1/8"	(104.8)	1 1/4"	(31.7)
981-L	3/4" & 7/8"	5 1/8"	(130.2)	4 1/8"	(104.8)	1 1/4"	(31.7)

To Install: Slip the open side of the 981 yoke onto the all thread rod above the top of the trapeze. Tighten set screw until head breaks off. Secure with hex nut. Insert channel brace into the 981 jaw and tighten set screw until head breaks off.

LARR APPROVAL



COOPER B-Line | **TOLCO**
1375 SAMPSON AVENUE | CORONA, CA. 92879
P: (951) 737-5599 | F: (951) 737-0330

DATE: MAY 31, 2019

05/31/2019

TRANSVERSE RIGID BRACING FOR TRAPEZE
SUPPORTED PIPE OR CONDUIT

DETAIL
3 LAT 30

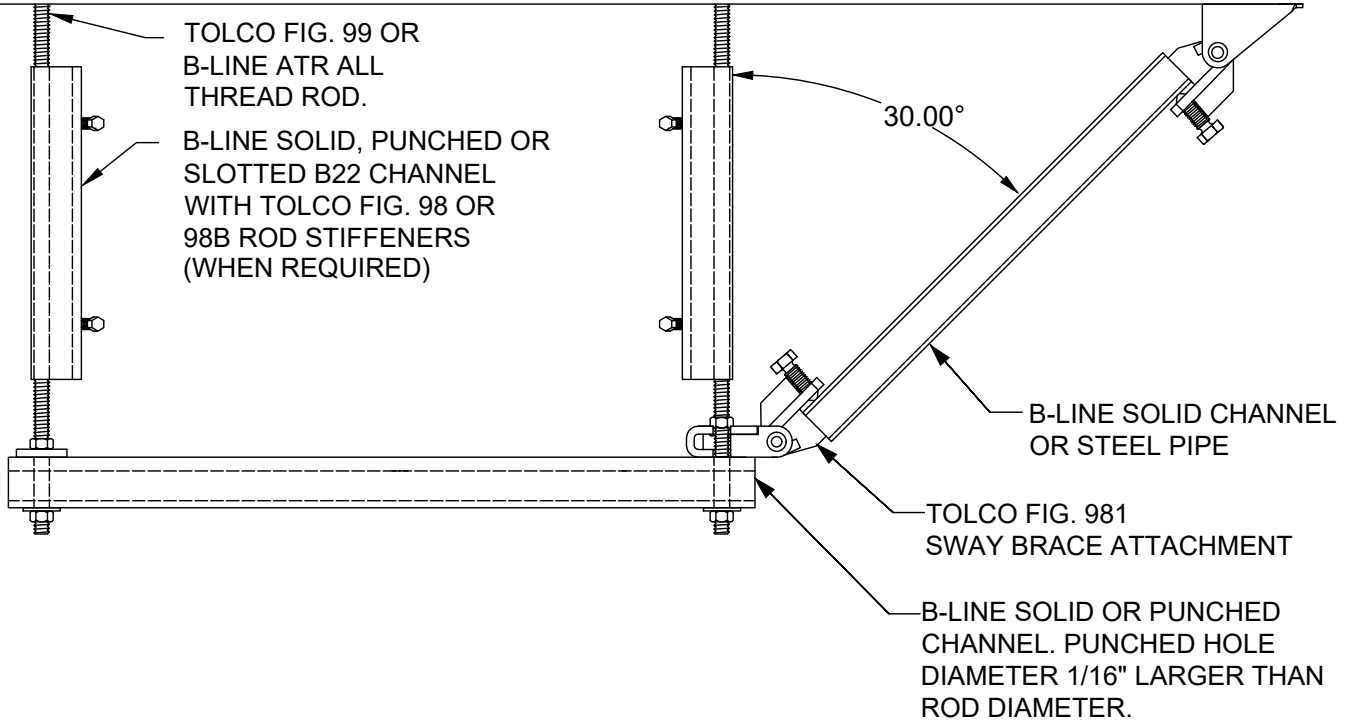
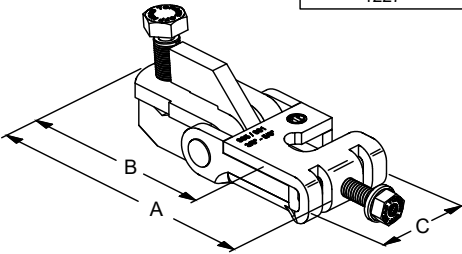


FIG. 981

LOAD PER BRACE (lbs)
SAFETY FACTOR: 3
1227



Part Number	Rod Size Range	A		B		C	
		in.	(mm)	in.	(mm)	in.	(mm)
981-S	3/8" thru 5/8"	5 1/8"	(130.2)	4 1/8"	(104.8)	1 1/4"	(31.7)
981-L	3/4" & 7/8"	5 1/8"	(130.2)	4 1/8"	(104.8)	1 1/4"	(31.7)

To Install: Slip the open side of the 981 yoke onto the all thread rod above the top of the trapeze. Tighten set screw until head breaks off. Secure with hex nut. Insert channel brace into the 981 jaw and tighten set screw until head breaks off.

LARR APPROVAL



COOPER B-Line | **TOLCO**
1375 SAMPSON AVENUE | CORONA, CA. 92879
P: (951) 737-5599 | F: (951) 737-0330

DATE: MAY 31, 2019

05/31/2019

LONGITUDINAL RIGID BRACING FOR TRAPEZE
SUPPORTED PIPE OR CONDUIT

DETAIL
3 LONG 45

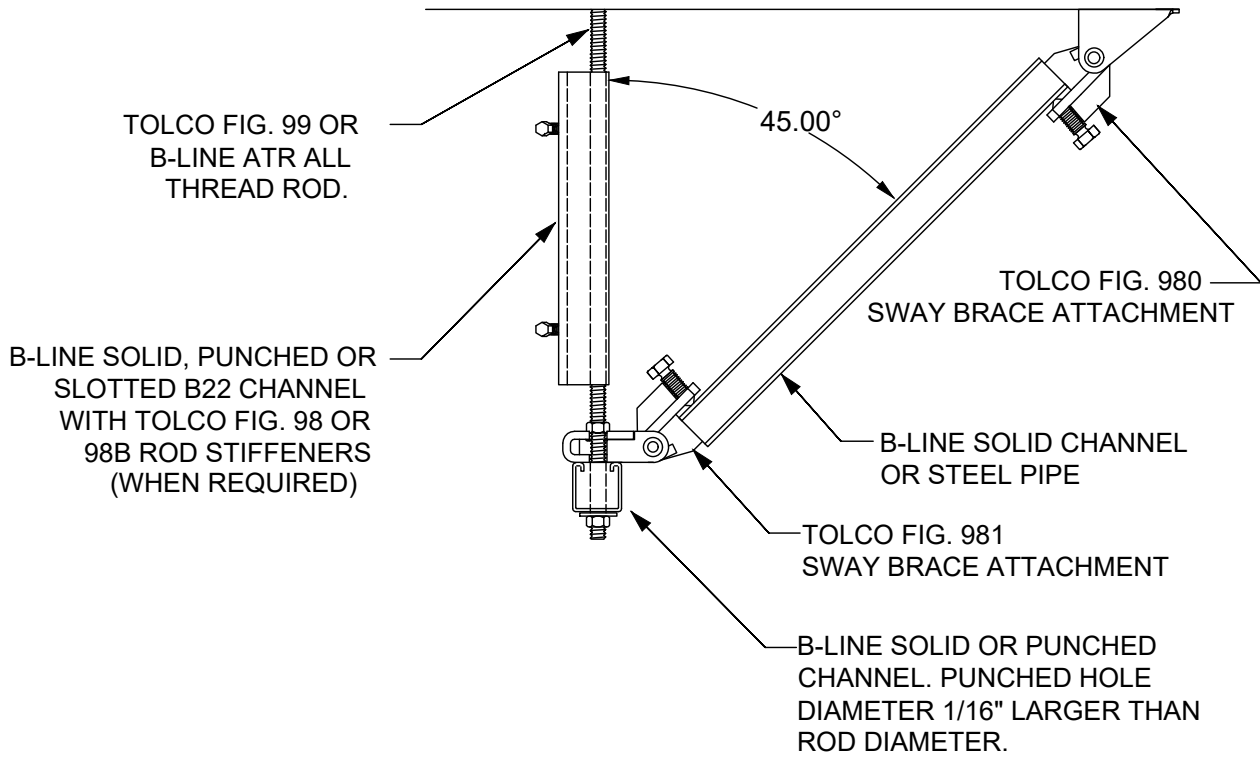
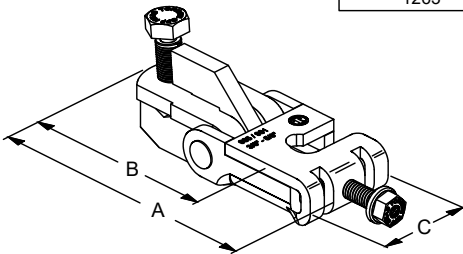


FIG. 981

LOAD PER BRACE (lbs)
SAFETY FACTOR: 3
1263

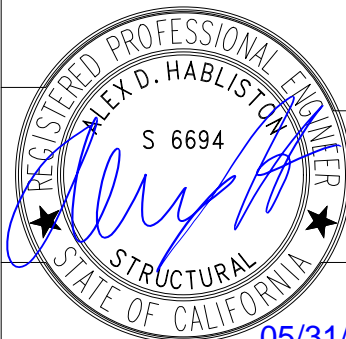


TOP VIEW

Part Number	Rod Size Range	A		B		C	
		in.	(mm)	in.	(mm)	in.	(mm)
981-S	3/8" thru 5/8"	51/8"	(130.2)	41/8"	(104.8)	11/4"	(31.7)
981-L	3/4" & 7/8"	51/8"	(130.2)	41/8"	(104.8)	11/4"	(31.7)

To Install: Slip the open side of the 981 yoke onto the all thread rod above the top of the trapeze. Tighten set screw until head breaks off. Secure with hex nut. Insert channel brace into the 981 jaw and tighten set screw until head breaks off.

LARR APPROVAL



COOPER B-Line | **TOLCO**
1375 SAMPSON AVENUE | CORONA, CA. 92879
P: (951) 737-5599 | F: (951) 737-0330

DATE: MAY 31, 2019

05/31/2019

LONGITUDINAL RIGID BRACING FOR TRAPEZE
SUPPORTED PIPE OR CONDUIT

DETAIL
3 LONG 30

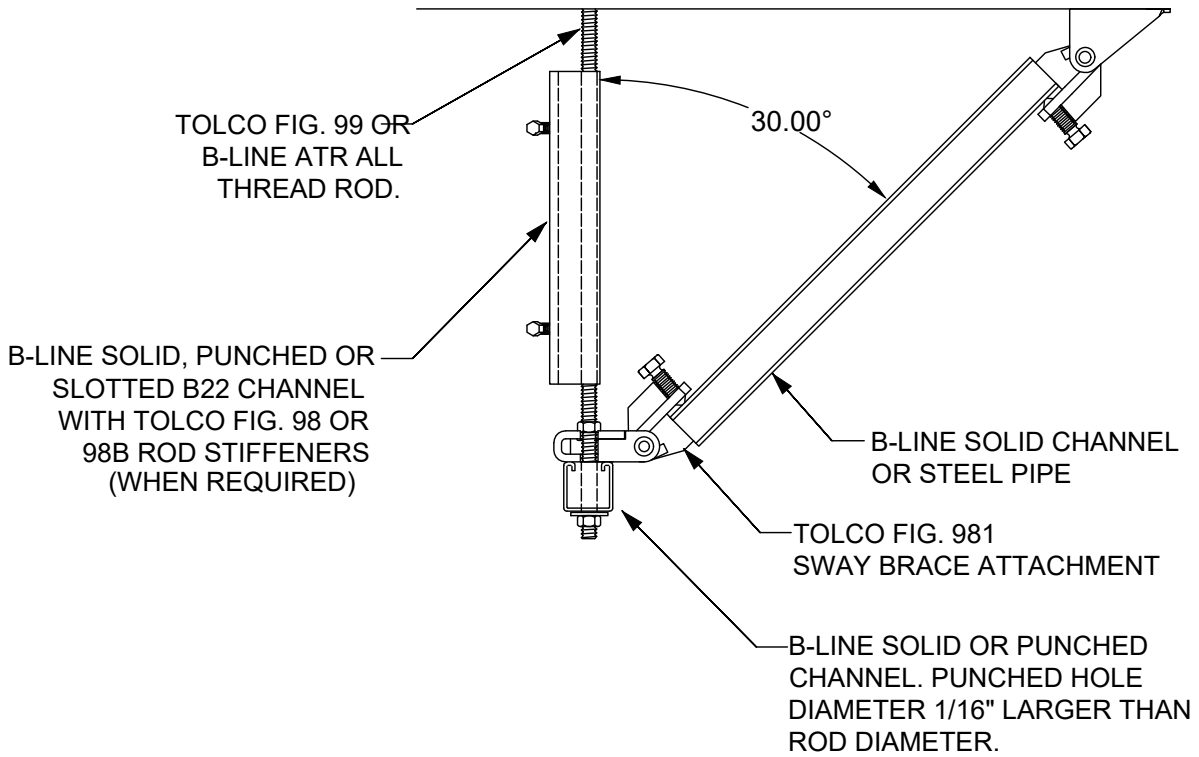
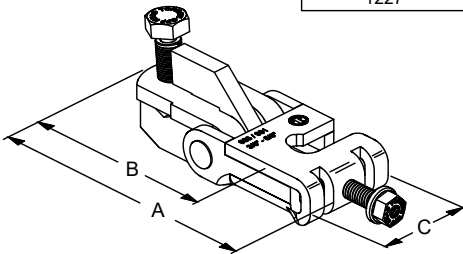


FIG. 981

LOAD PER BRACE (lbs)
SAFETY FACTOR: 3
1227



TOP VIEW

Part Number	Rod Size Range	A		B		C	
		in.	(mm)	in.	(mm)	in.	(mm)
981-S	3/8" thru 5/8"	5 1/8"	(130.2)	4 1/8"	(104.8)	1 1/4"	(31.7)
981-L	3/4" & 7/8"	5 1/8"	(130.2)	4 1/8"	(104.8)	1 1/4"	(31.7)

To Install: Slip the open side of the 981 yoke onto the all thread rod above the top of the trapeze. Tighten set screw until head breaks off. Secure with hex nut. Insert channel brace into the 981 jaw and tighten set screw until head breaks off.

LARR APPROVAL



COOPER B-Line | **TOLCO**
1375 SAMPSON AVENUE | CORONA, CA. 92879
P: (951) 737-5599 | F: (951) 737-0330

DATE: MAY 31, 2019

05/31/2019

TRANSVERSE CABLE BRACING FOR TRAPEZE SUPPORTED PIPE OR CONDUIT

DETAIL
4 LAT 45

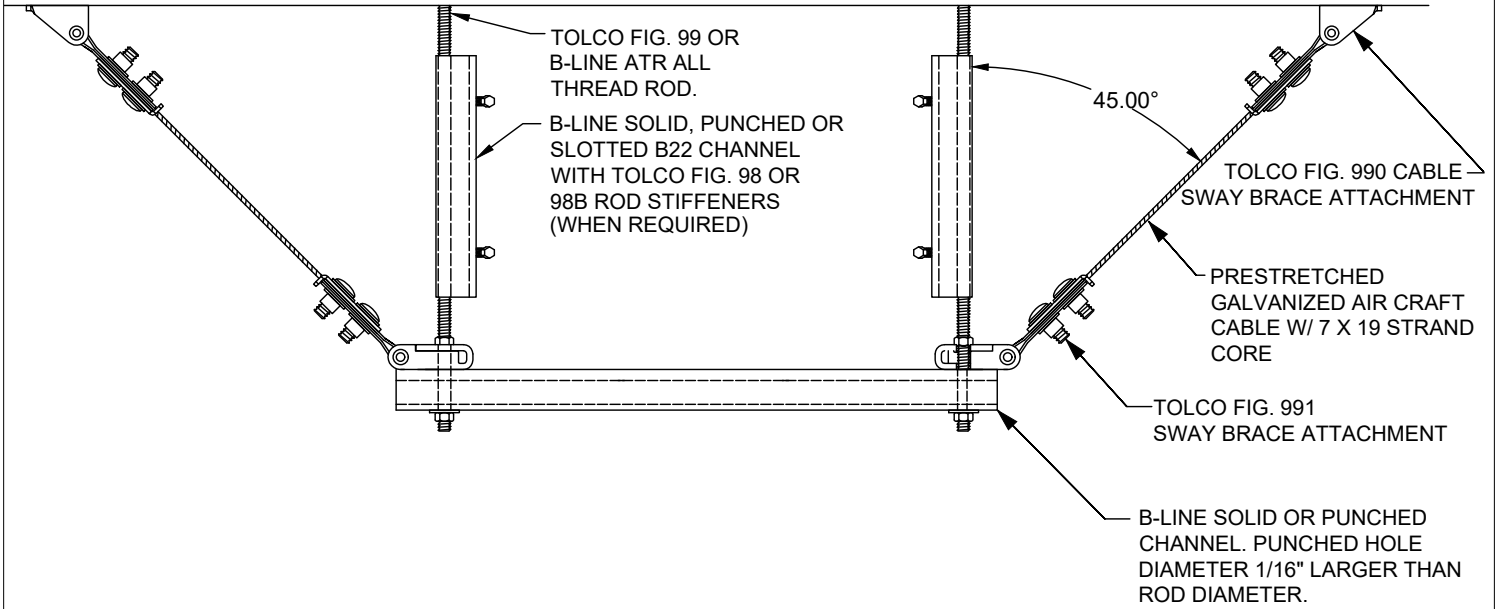
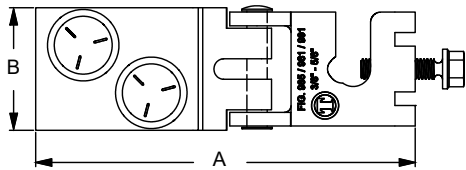


FIG. 991

MIN. 3/16" CABLE: LOAD PER BRACE (lbs)
SAFETY FACTOR: 3
1023

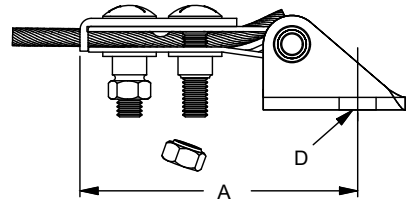


Part Number	Rod Size	Cable Diameter		A		B	
		in.	(mm)	in.	(mm)	in.	(mm)
991	3/8" thru 5/8"	3/16"	(4.8)	5"	(127)	2 1/4"	(57.1)
		1/4"	(6.3)	5"	(127)	2 5/8"	(66.7)

To Install: Slip the open side of the Fig 991 yoke onto the all thread rod above the top of the trapeze. Insert the cable through opening and out the back, pull tight. Tighten break-off nuts until nut shears. Secure in place with hex nut.

FIG. 990

MIN. 3/16" CABLE: LOAD PER BRACE (lbs)
SAFETY FACTOR: 3
1387



Part Number	A		D	
	in.	(mm)	in.	(mm)
990-1/2	5"	(127)	17/32"	(13.5)
990-5/8	5"	(127)	1 1/16"	(17.5)
990-3/4	5"	(127)	1 3/16"	(20.5)

To Install: Bolt Fig 990 to structural attachment. Slide cable through Fig 990 and tighten break off nuts until shearing off. Attachment can pivot for adjustment to proper brace angle.

LARR APPROVAL



COOPER B-Line | TOLCO
1375 SAMPSON AVENUE | CORONA, CA. 92879
P: (951) 737-5599 | F: (951) 737-0330

DATE: MAY 31, 2019

05/31/2019

LARR 25949
Page 13 of 32

TRANSVERSE CABLE BRACING FOR TRAPEZE SUPPORTED PIPE OR CONDUIT

DETAIL
4 LAT 30

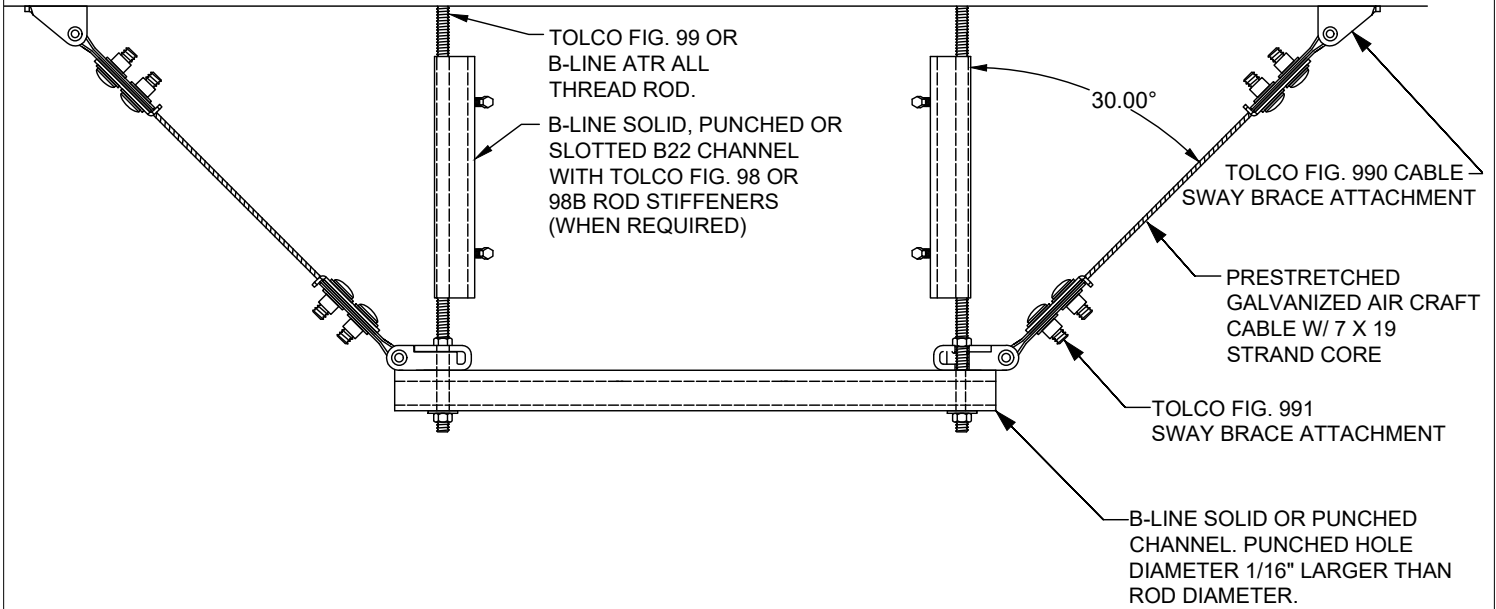
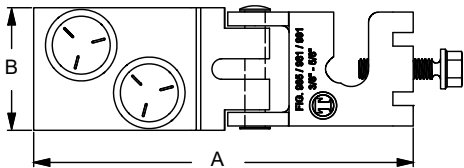


FIG. 991

MIN. 3/16" CABLE: LOAD PER BRACE (lbs)
SAFETY FACTOR: 3
1073

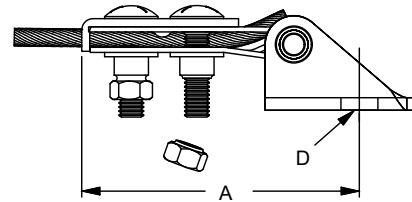


Part Number	Rod Size	Cable Diameter in. (mm)	A in. (mm)	B in. (mm)
991	3/8" thru 5/8"	3/16" (4.8)	5" (127)	21/4" (57.1)
		1/4" (6.3)	5" (127)	25/8" (66.7)

To Install: Slip the open side of the Fig 991 yoke onto the all thread rod above the top of the trapeze. Insert the cable through opening and out the back, pull tight. Tighten break-off nuts until nut shears. Secure in place with hex nut.

FIG. 990

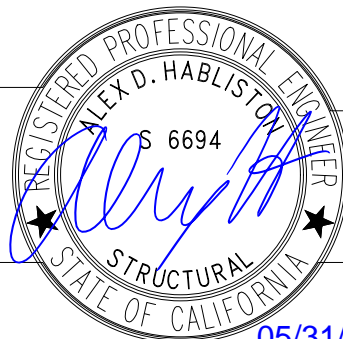
MIN. 3/16" CABLE: LOAD PER BRACE (lbs)
SAFETY FACTOR: 3
1507



Part Number	A		D	
	in. (mm)	in. (mm)		
990-1/2	5"	(127)	17/32"	(13.5)
990-5/8	5"	(127)	11/16"	(17.5)
990-3/4	5"	(127)	13/16"	(20.5)

To Install: Bolt Fig 990 to structural attachment. Slide cable through Fig 990 and tighten break off nuts until shearing off. Attachment can pivot for adjustment to proper brace angle.

LARR APPROVAL



COOPER B-Line | TOLCO
1375 SAMPSON AVENUE | CORONA, CA. 92879
P: (951) 737-5599 | F: (951) 737-0330

DATE: MAY 31, 2019

05/31/2019

LARR 25949
Page 14 of 32

LONGITUDINAL CABLE BRACING FOR TRAPEZE SUPPORTED PIPE OR CONDUIT

DETAIL
4 LONG 45

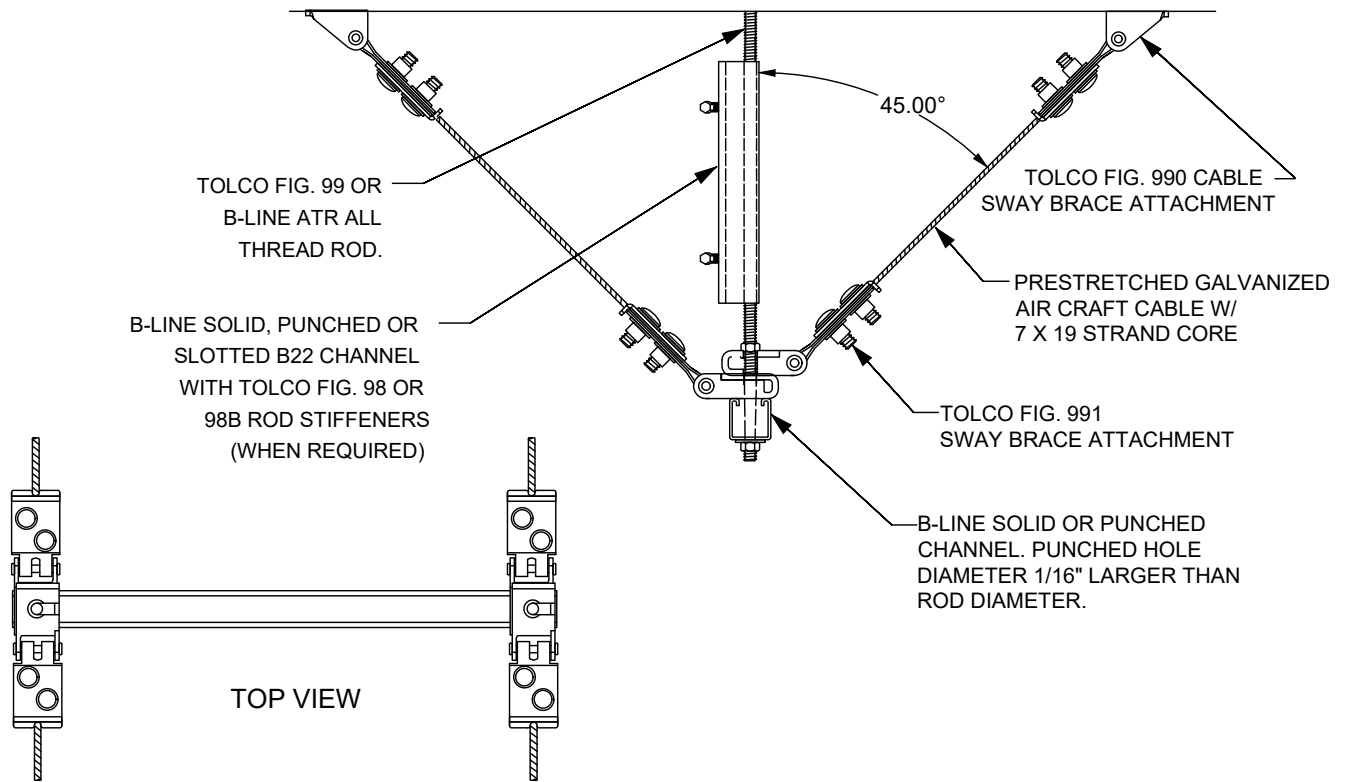
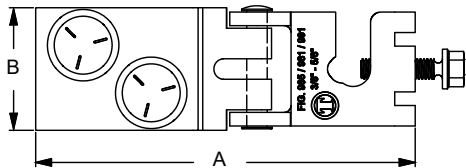


FIG. 991

MIN. 3/16" CABLE: LOAD PER BRACE (lbs)
SAFETY FACTOR: 3
1023

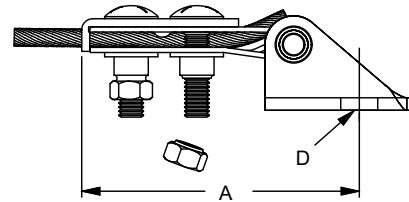


Part Number	Rod Size	Cable Diameter		A		B
		in. (mm)	in. (mm)	in. (mm)	in. (mm)	
991	3/8" thru 5/8"	3/16"	(4.8)	5"	(127)	2 1/4" (57.1)
		1/4"	(6.3)	5"	(127)	2 5/8" (66.7)

To Install: Slip the open side of the Fig 991 yoke onto the all thread rod above the top of the trapeze. Insert the cable through opening and out the back, pull tight. Tighten break-off nuts until nut shears. Secure in place with hex nut.

FIG. 990

MIN. 3/16" CABLE: LOAD PER BRACE (lbs)
SAFETY FACTOR: 3
1387



Part Number	A		D	
	in.	(mm)	in.	(mm)
990-1/2	5"	(127)	17/32"	(13.5)
990-5/8	5"	(127)	11/16"	(17.5)
990-3/4	5"	(127)	13/16"	(20.5)

To Install: Bolt Fig 990 to structural attachment. Slide cable through Fig 990 and tighten break off nuts until shearing off. Attachment can pivot for adjustment to proper brace angle.

LARR APPROVAL



COOPER B-Line | TOLCO
1375 SAMPSON AVENUE | CORONA, CA. 92879
P: (951) 737-5599 | F: (951) 737-0330

DATE: MAY 31, 2019

05/31/2019

LONGITUDINAL CABLE BRACING FOR TRAPEZE SUPPORTED PIPE OR CONDUIT

DETAIL
4 LONG 30

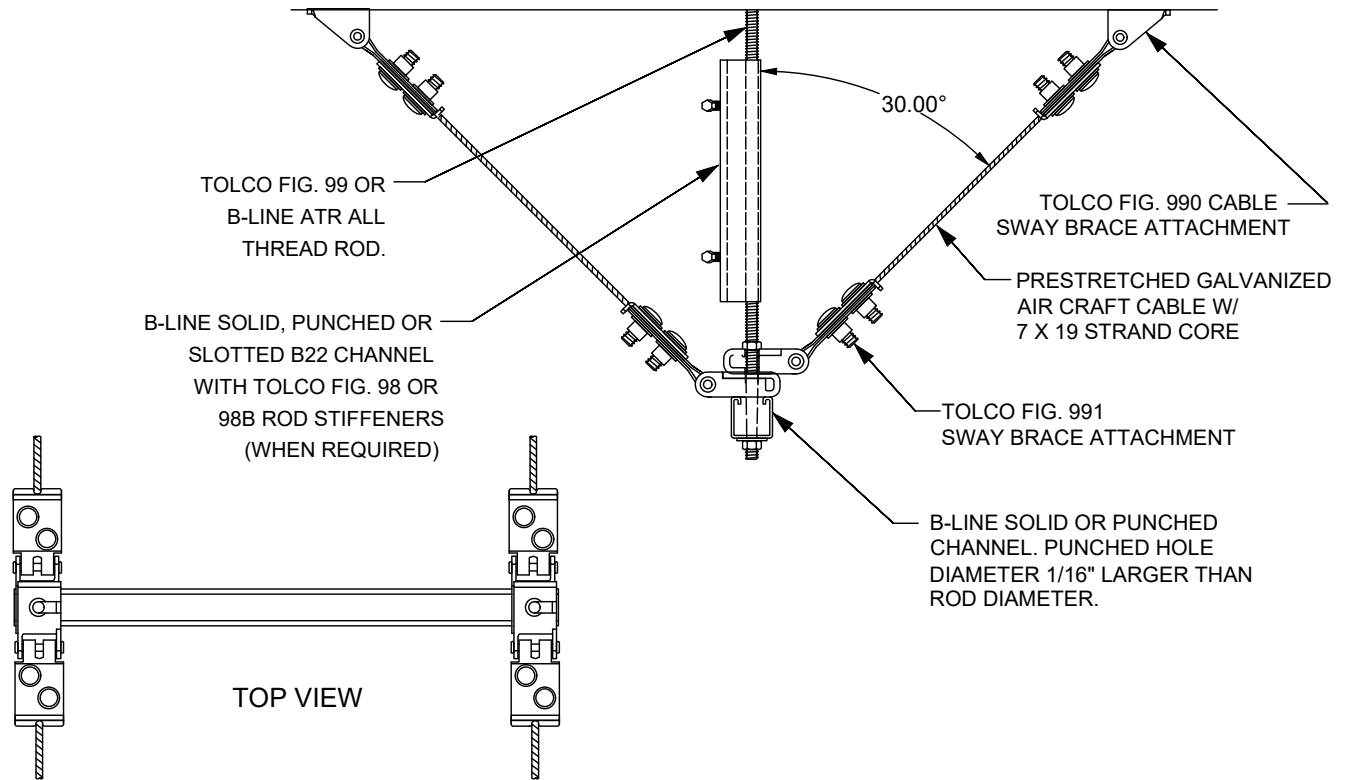
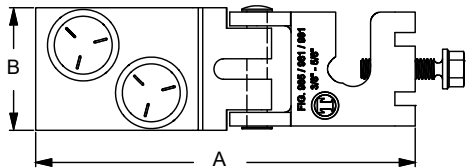


FIG. 991

MIN. 3/16" CABLE: LOAD PER BRACE (lbs)
SAFETY FACTOR: 3
1073

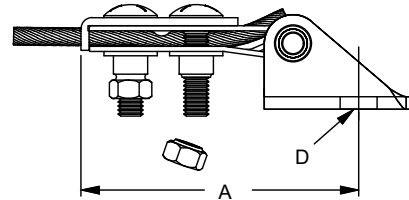


Part Number	Rod Size	Cable Diameter		A		B
		in. (mm)	in. (mm)	in. (mm)	in. (mm)	
991	3/8" thru 5/8"	3/16"	(4.8)	5"	(127)	2 1/4" (57.1)
		1/4"	(6.3)	5"	(127)	2 5/8" (66.7)

To Install: Slip the open side of the Fig 991 yoke onto the all thread rod above the top of the trapeze. Insert the cable through opening and out the back, pull tight. Tighten break-off nuts until nut shears. Secure in place with hex nut.

FIG. 990

MIN. 3/16" CABLE: LOAD PER BRACE (lbs)
SAFETY FACTOR: 3
1507



Part Number	A		D	
	in.	(mm)	in.	(mm)
990-1/2	5"	(127)	17/32"	(13.5)
990-5/8	5"	(127)	11/16"	(17.5)
990-3/4	5"	(127)	13/16"	(20.5)

To Install: Bolt Fig 990 to structural attachment. Slide cable through Fig 990 and tighten break off nuts until shearing off. Attachment can pivot for adjustment to proper brace angle.

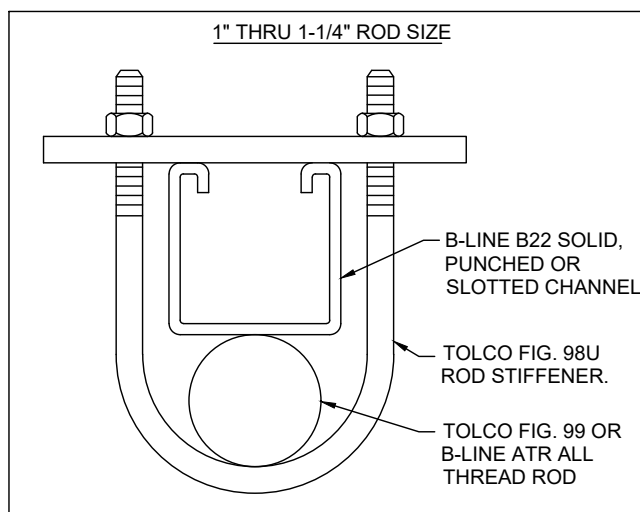
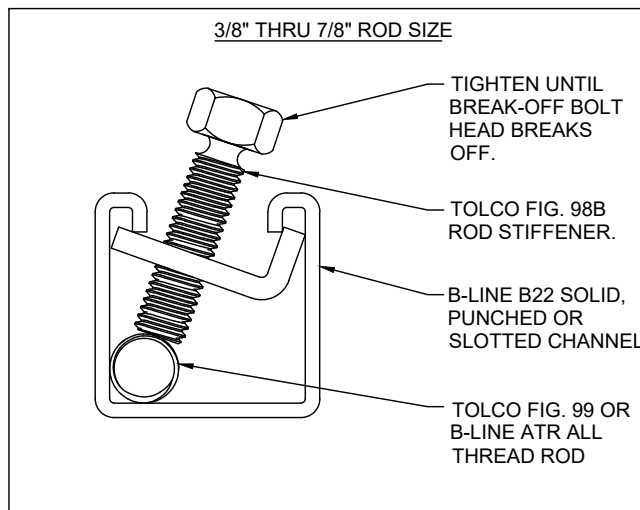
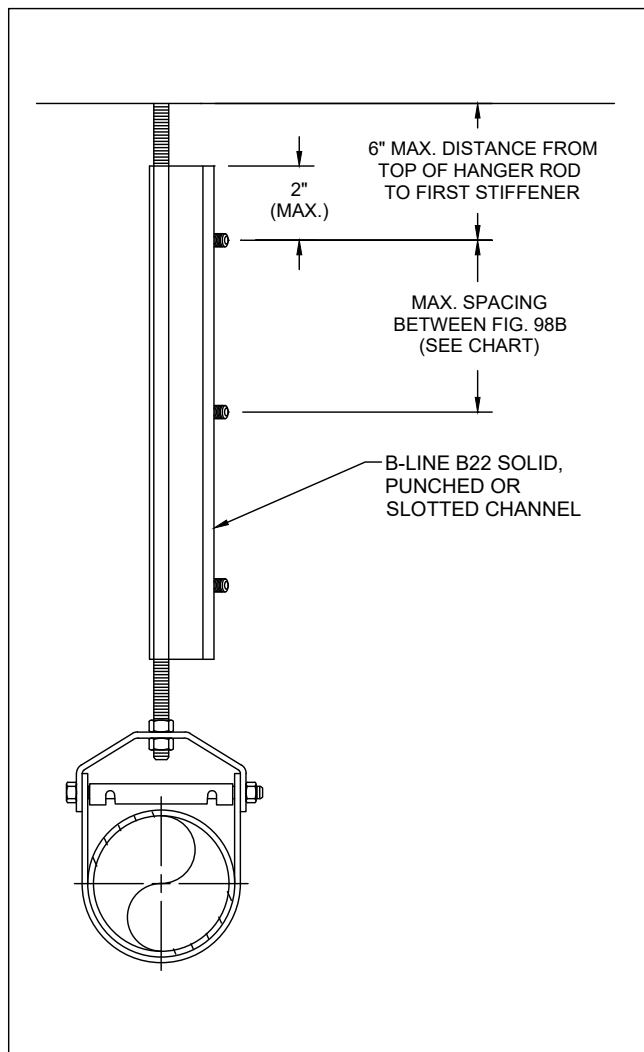
LARR APPROVAL



COOPER B-Line | TOLCO
1375 SAMPSON AVENUE | CORONA, CA. 92879
P: (951) 737-5599 | F: (951) 737-0330

DATE: MAY 31, 2019

LARR 25949
Page 16 of 32



ROD SIZE	MAX. ROD LENGTH WITHOUT ROD STIFFENER	MAX. SPACING BETWEEN TOLCO FIG. 98
3/8"	19"	13"
1/2"	25"	18"
5/8"	31"	23"
3/4"	37"	28"
7/8"	43"	33"
1"	50"	38"
1 1/4"	62"	43"

LARR APPROVAL

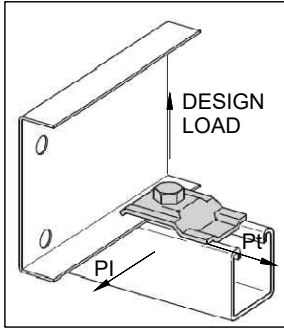


COOPER B-Line | TOLCO
 1375 SAMPSON AVENUE | CORONA, CA. 92879
 P: (951) 737-5599 | F: (951) 737-0330

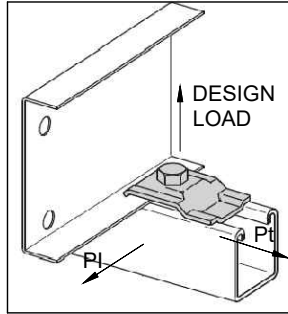
DATE: MAY 31, 2019

05/31/2019

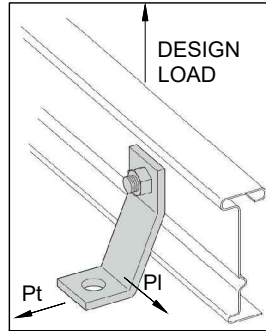
9ZN-1205



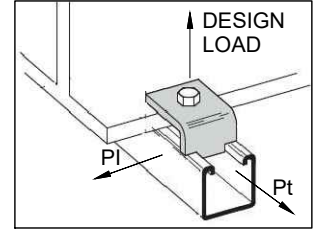
9ZN-1208



9ZN-1241



B355



PART NUMBER	CLAMP			GUIDE		
	DESIGN LOAD	Pt	PI	DESIGN LOAD	Pt	PI
9ZN-1205	570	482	155	570	482	-
9ZN-1208	570	482	155	570	482	-
9ZN-1241	1031	1240	702	-	-	-
B355	1196	503	180	-	-	-

NOTES:

- 1.) DESIGN LOADS ARE IN LBS., SAFETY FACTOR: 3
- 2.) LOADS ARE BASED ON CLAMPS BEING USED IN PAIRS
- 3.) LOADS APPLICABLE ONLY WITH B-LINE STRUT
- 4.) TIGHTEN BOLTS TO FOLLOW TORQUE VALUES AS FOLLOWS:
 - a) FOR 9ZN-1205: TORQUE HARDWARE TO 50 FT-LBS FOR 1/2" DIA
 - b) FOR 9ZN-1208: TORQUE HARDWARE TO 19 FT-LBS FOR 3/8" DIA
 - c) FOR 9ZN-1241: TORQUE HARDWARE TO 19 FT-LBS FOR 3/8" DIA
 - d) FOR B355: TORQUE HARDWARE TO 50 FT-LBS FOR 1/2" DIA

LARR APPROVAL



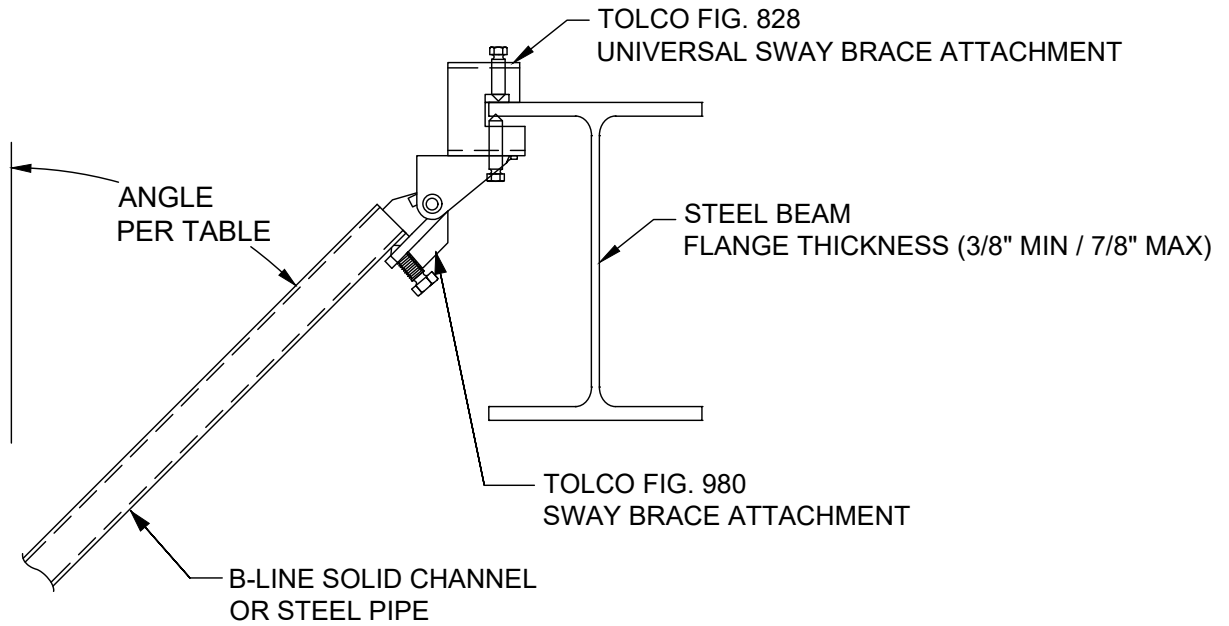
COOPER B-Line | TOLCO
 1375 SAMPSON AVENUE | CORONA, CA. 92879
 P: (951) 737-5599 | F: (951) 737-0330

DATE: MAY 31, 2019

05/31/2019

FIG 828 LOAD PERPENDICULAR TO BEAM
(30, 45, AND 60 DEG FROM VERTICAL)

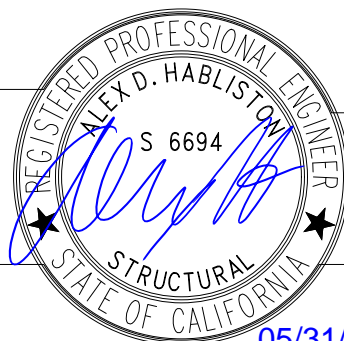
DETAIL
828T



BRACE ANGLE	60°	45°	30°
MAX AXIAL LOAD PER BRACE (lbs) PER FM TESTING	1210	1970	1320

NOTE: ALLOWABLE LOADS ARE MINIMUM BETWEEN FIG 980 AND FIG 828

LARR APPROVAL



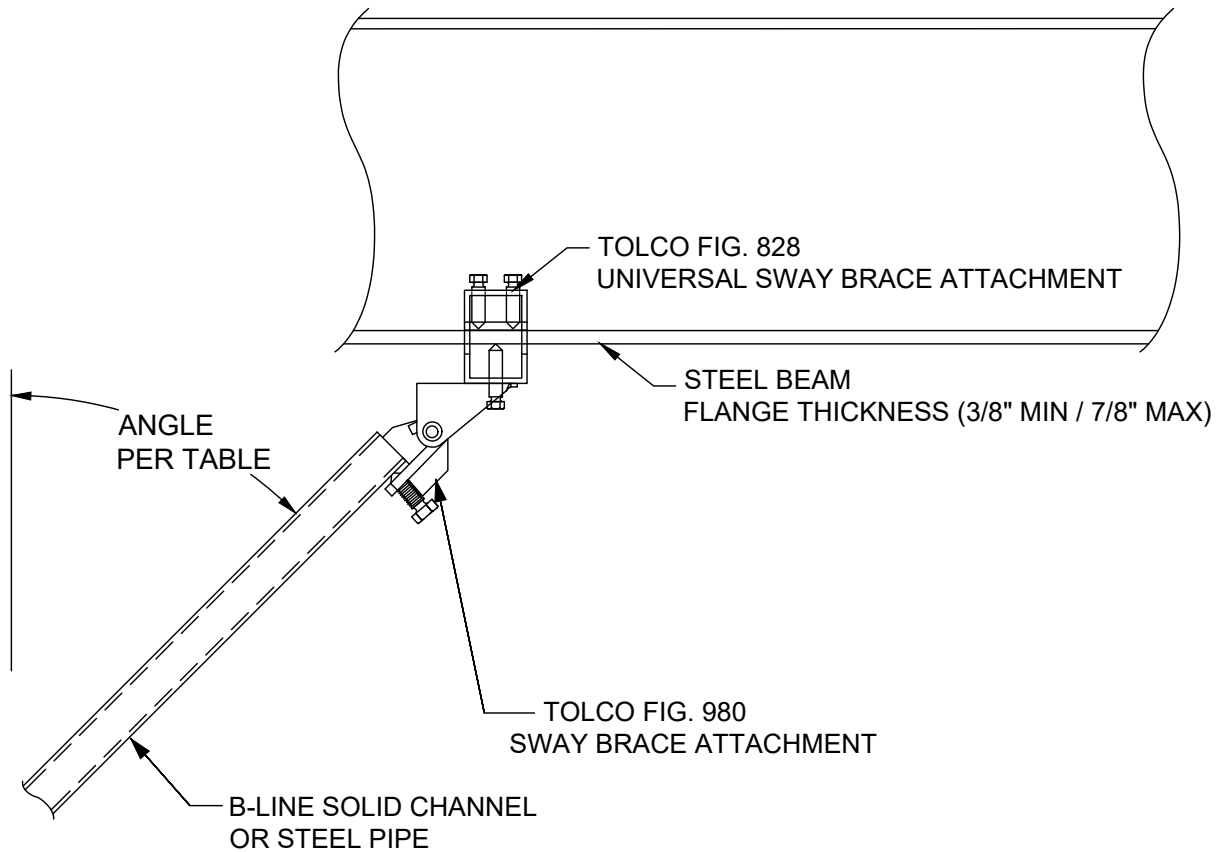
COOPER B-Line | TOLCO
1375 SAMPSON AVENUE | CORONA, CA. 92879
P: (951) 737-5599 | F: (951) 737-0330

DATE: MAY 31, 2019

05/31/2019

FIG 828 LOAD ALONG BEAM (30, 45, AND 60 DEGREES FROM VERTICAL)

DETAIL
828L



BRACE ANGLE	60°	45°	30°
MAX AXIAL LOAD PER BRACE (lbs) PER FM TESTING	1210	970	690

NOTE: ALLOWABLE LOADS ARE MINIMUM BETWEEN FIG 980 AND FIG 828

LARR APPROVAL



COOPER B-Line | TOLCO
1375 SAMPSON AVENUE | CORONA, CA. 92879
P: (951) 737-5599 | F: (951) 737-0330

DATE: MAY 31, 2019

05/31/2019

FIG 980 BRACE LOAD (30, 45, AND 60 DEGREES FROM VERTICAL)

DETAIL
980

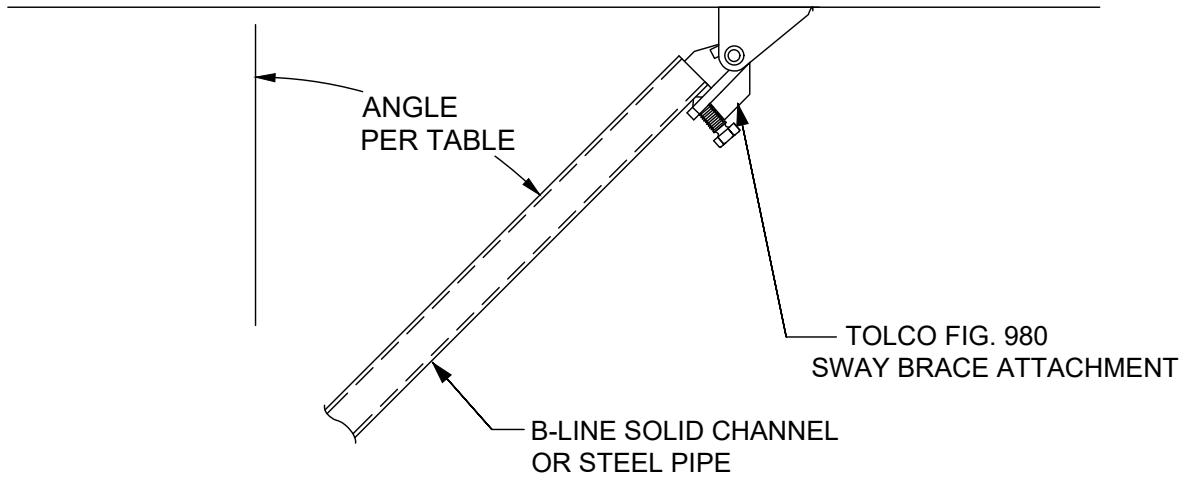
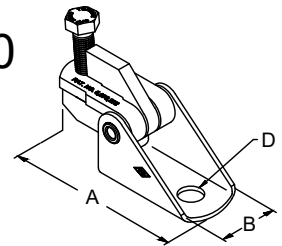


FIG. 980

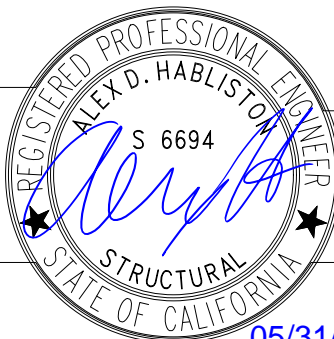


Part Number	A		B		D	
	in.	(mm)	in.	(mm)	in.	(mm)
980-1/2	51/4"	(133.3)	17/8"	(47.6)	17/32"	(13.5)
980-5/8	51/4"	(133.3)	17/8"	(47.6)	11/16"	(17.5)
980-3/4	51/4"	(133.3)	17/8"	(47.6)	13/16"	(20.5)

BRACE ANGLE	60°	45°	30°
MAX AXIAL LOAD PER BRACE (lbs) PER FM TESTING	2310	1970	1320

To Install: Place the Fig. 980 onto the "bracing member". Tighten the set screw until the head breaks off. Attachment can pivot for adjustment to proper brace angle.

LARR APPROVAL



COOPER B-Line | TOLCO
1375 SAMPSON AVENUE | CORONA, CA. 92879
P: (951) 737-5599 | F: (951) 737-0330

DATE: MAY 31, 2019

05/31/2019

LARR 25949
Page 21 of 32

FIG 981 BRACE LOAD (30, 45, AND 60 DEGREES FROM VERTICAL)

DETAIL
981

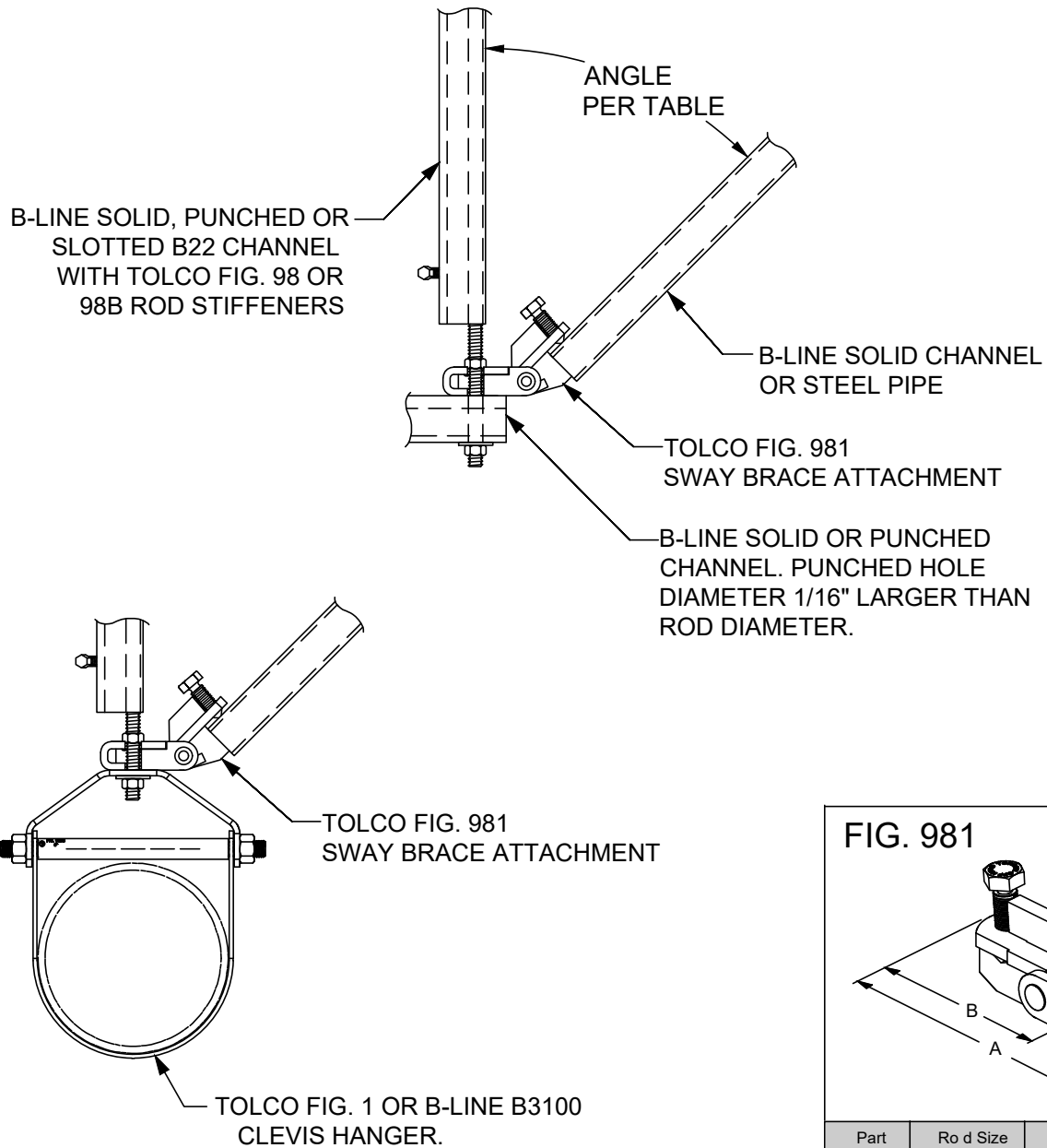
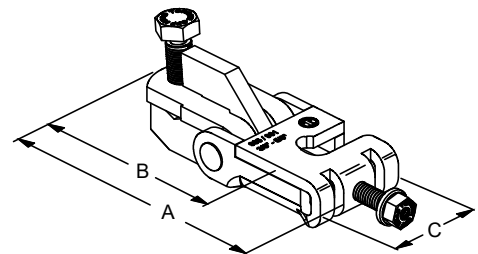


FIG. 981



Part Number	Rod Size Range	A		B		C	
		in.	(mm)	in.	(mm)	in.	(mm)
981-S	3/8" thru 5/8"	5 1/8"	(130.2)	4 1/8"	(104.8)	1 1/4"	(31.7)
981-L	3/4" & 7/8"	5 1/8"	(130.2)	4 1/8"	(104.8)	1 1/4"	(31.7)

To Install: Slip the open side of the 981 yoke onto the all thread rod above the top of the support. Tighten set screw until head breaks off. Secure with hex nut. Insert channel brace into the 981 jaw and tighten set screw until head breaks off.

BRACE ANGLE	60°	45°	30°
MAX AXIAL LOAD PER BRACE (lbs)	N/A	1263	1227
SAFETY FACTOR: 3			

LARR APPROVAL



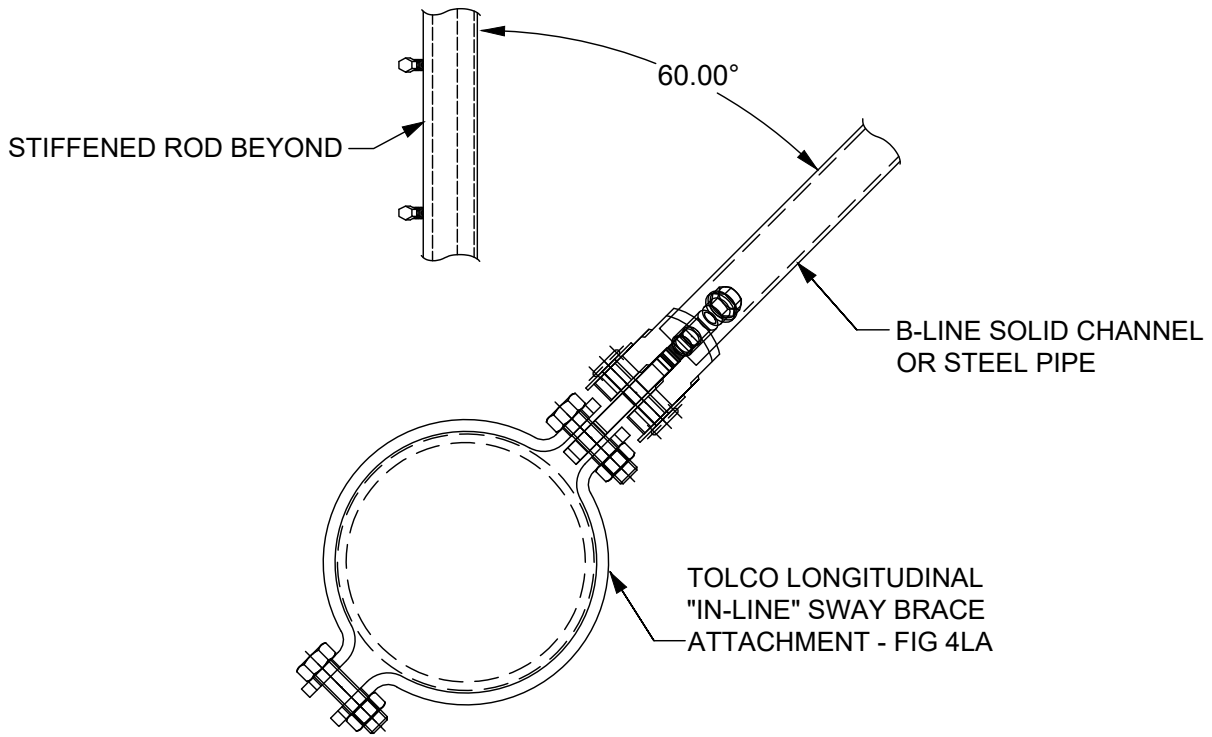
COOPER B-Line | **TOLCO**
1375 SAMPSON AVENUE | CORONA, CA. 92879
P: (951) 737-5599 | F: (951) 737-0330

06/10/2019

DATE: MAY 31, 2019

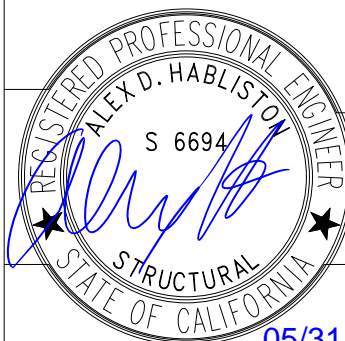
FIG 4LA TRANSVERSE LOAD

DETAIL
5LAT60



PIPE SIZE	1" -> 1 1/2"	2"	2 1/2" -> 5"	6"	8" -> 12"
MAX LOAD PER BRACE (lbs) PER FM TESTING	1190	1190	1190	2820	2820

LARR APPROVAL



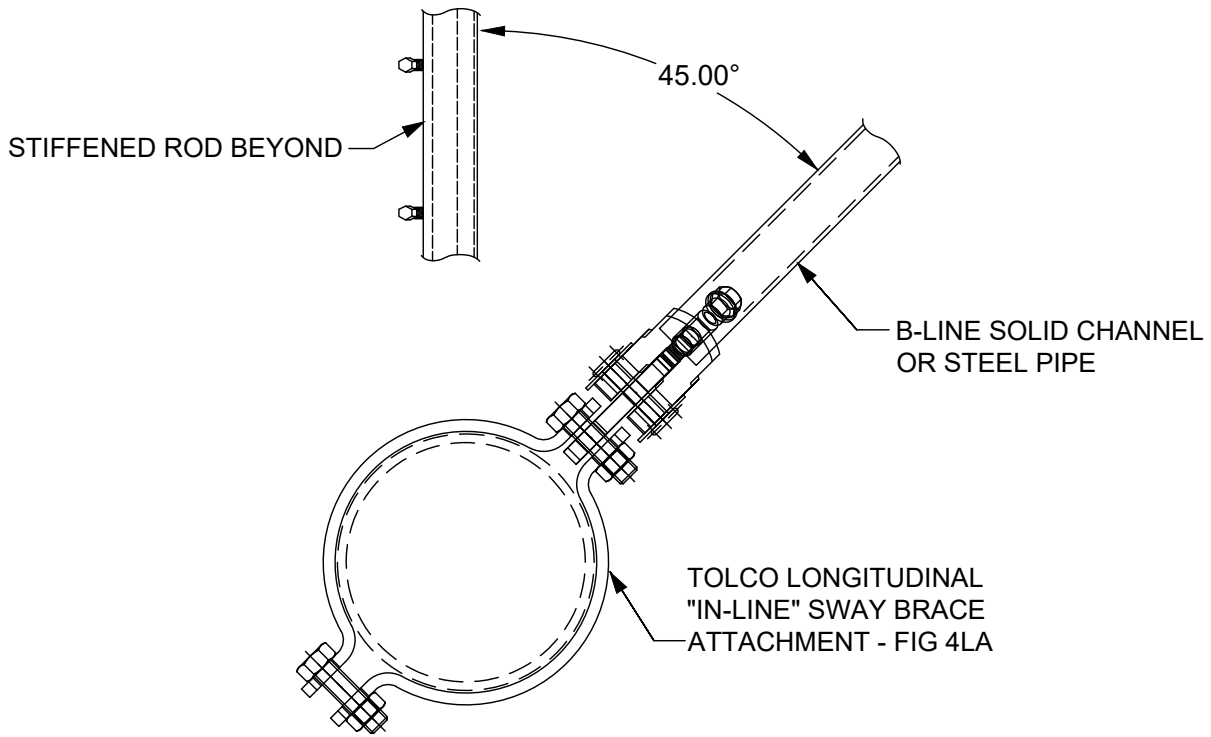
COOPER B-Line | **TOLCO**
 1375 SAMPSON AVENUE | CORONA, CA. 92879
 P: (951) 737-5599 | F: (951) 737-0330

DATE: MAY 31, 2019

05/31/2019

FIG 4LA TRANSVERSE LOAD

DETAIL
5LAT45



PIPE SIZE	1" -> 1 1/2"	2"	2 1/2" -> 5"	6"	8" -> 12"
MAX LOAD PER BRACE (lbs) PER FM TESTING	970	970	970	2300	2300

LARR APPROVAL



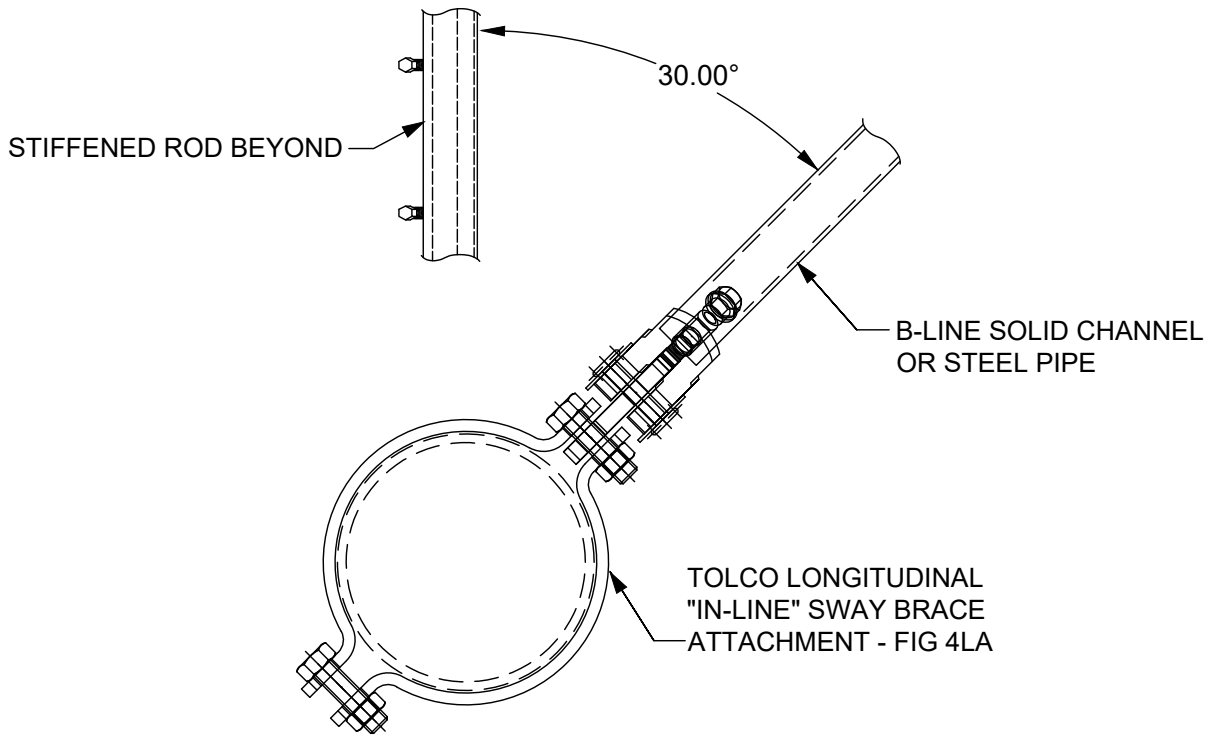
COOPER B-Line | **TOLCO**
 1375 SAMPSON AVENUE | CORONA, CA. 92879
 P: (951) 737-5599 | F: (951) 737-0330

DATE: MAY 31, 2019

05/31/2019

FIG 4LA TRANSVERSE LOAD

DETAIL
5LAT30



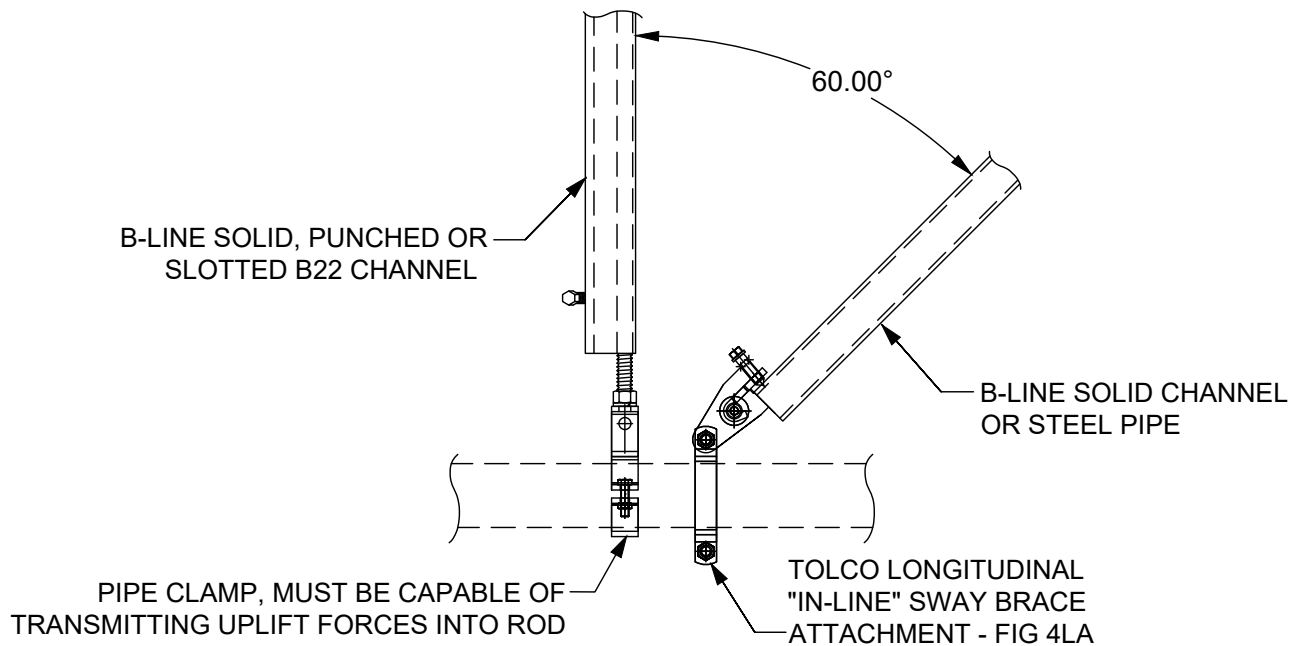
PIPE SIZE	1" -> 1 1/2"	2"	2 1/2" -> 5"	6"	8" -> 12"
MAX LOAD PER BRACE (lbs) PER FM TESTING	680	680	680	1620	1620

LARR APPROVAL



COOPER B-Line | **TOLCO**
1375 SAMPSON AVENUE | CORONA, CA. 92879
P: (951) 737-5599 | F: (951) 737-0330

DATE: MAY 31, 2019



PIPE SIZE	1" -> 1 1/2"	2"	2 1/2" -> 5"	6"	8" -> 12"
MAX LOAD PER BRACE (lbs) PER FM TESTING	1190	1030	1190	2010	1570

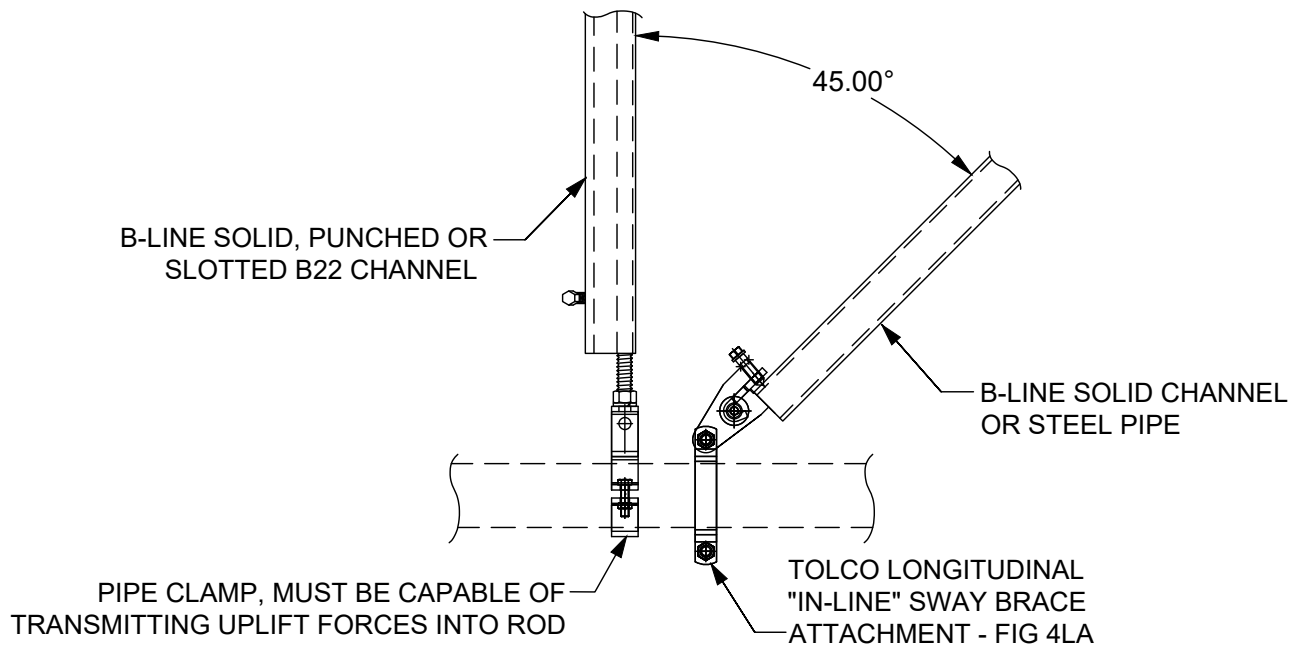
LARR APPROVAL



COOPER B-Line | **TOLCO**
 1375 SAMPSON AVENUE | CORONA, CA. 92879
 P: (951) 737-5599 | F: (951) 737-0330

DATE: MAY 31, 2019

05/31/2019



PIPE SIZE	1" -> 1 1/2"	2"	2 1/2" -> 5"	6"	8" -> 12"
MAX LOAD PER BRACE (lbs) PER FM TESTING	970	860	970	2260	1660

LARR APPROVAL



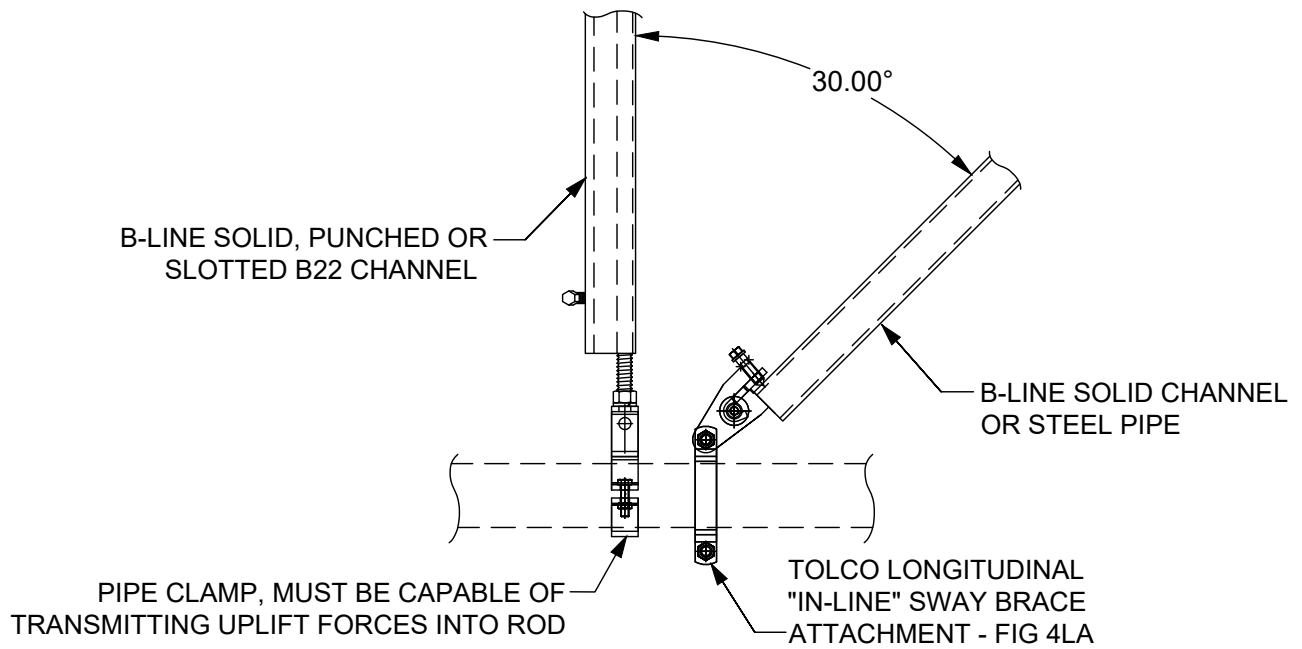
COOPER B-Line | **TOLCO**
 1375 SAMPSON AVENUE | CORONA, CA. 92879
 P: (951) 737-5599 | F: (951) 737-0330

DATE: MAY 31, 2019

05/31/2019

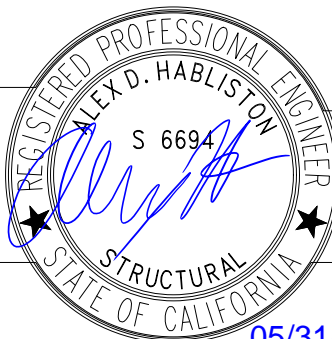
FIG 4LA LONGITUDINAL LOAD

DETAIL
5LONG30



PIPE SIZE	1" -> 1 1/2"	2"	2 1/2" -> 5"	6"	8" -> 12"
MAX LOAD PER BRACE (lbs) PER FM TESTING	680	680	680	1620	1620

LARR APPROVAL



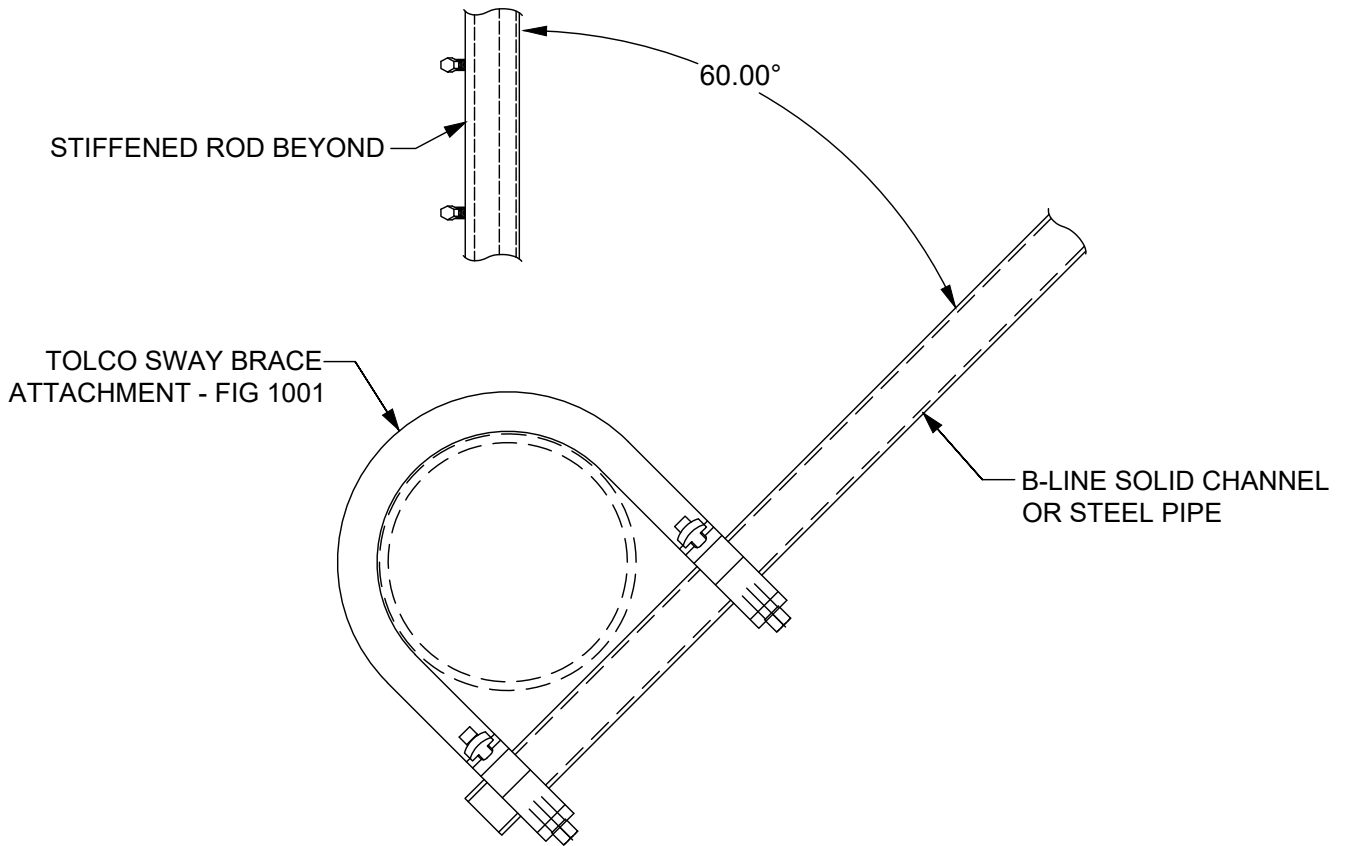
COOPER B-Line | **TOLCO**
 1375 SAMPSON AVENUE | CORONA, CA. 92879
 P: (951) 737-5599 | F: (951) 737-0330

DATE: MAY 31, 2019

05/31/2019

FIG 1001 TRANSVERSE LOAD

DETAIL
6LAT60



PIPE SIZE	1"	1 1/4" -> 2"	2 1/2"	3" -> 4"	5" -> 8"
MAX LOAD PER BRACE (lbs) PER FM TESTING	3120	2140	1380	1470	890

LARR APPROVAL



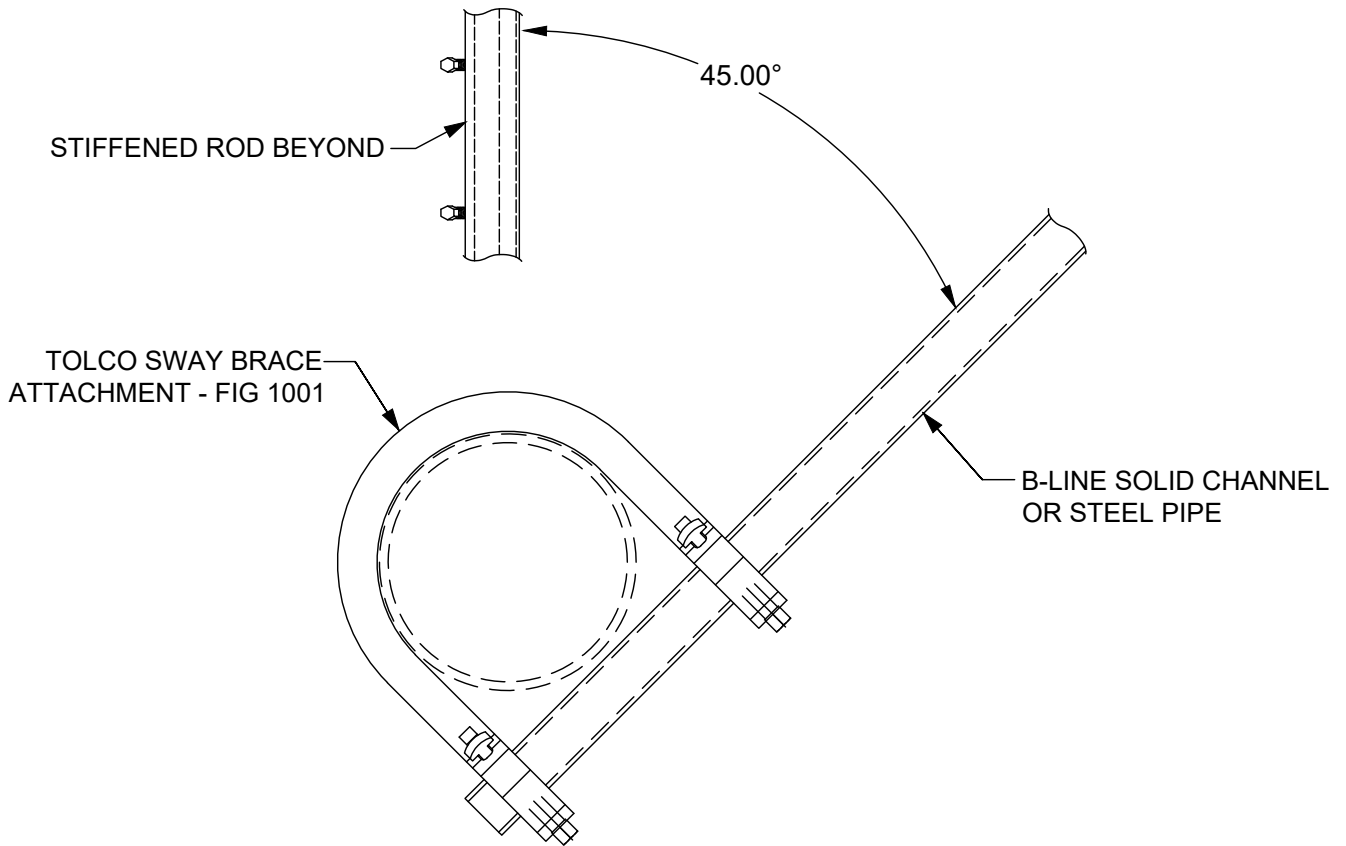
COOPER B-Line | TOLCO
 1375 SAMPSON AVENUE | CORONA, CA. 92879
 P: (951) 737-5599 | F: (951) 737-0330

DATE: MAY 31, 2019

05/31/2019

FIG 1001 TRANSVERSE LOAD

DETAIL
6LAT45



PIPE SIZE	1"	1 1/4" -> 2"	2 1/2"	3" -> 4"	5" -> 8"
MAX LOAD PER BRACE (lbs) PER FM TESTING	2550	1740	1130	1200	730

LARR APPROVAL



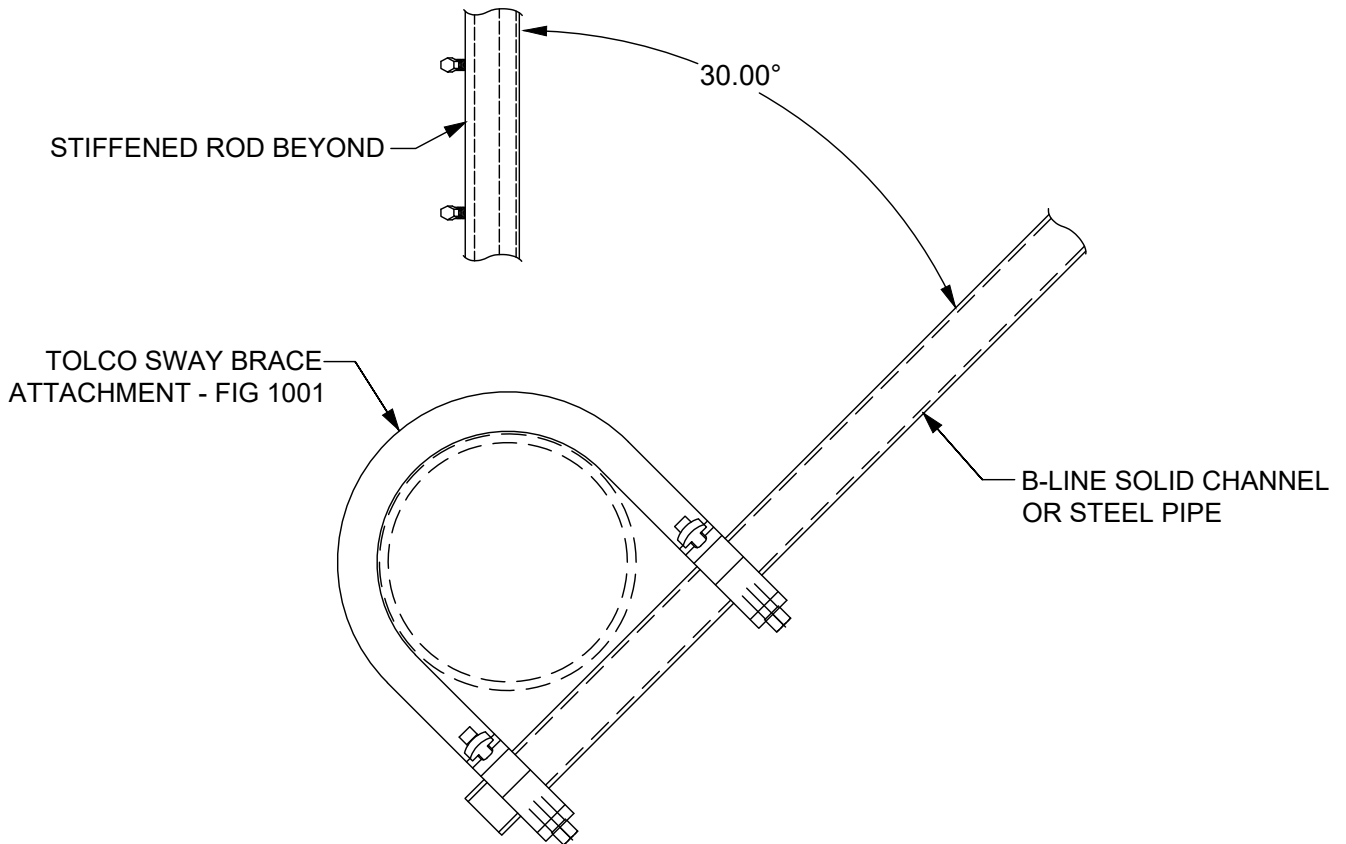
COOPER B-Line | TOLCO
 1375 SAMPSON AVENUE | CORONA, CA. 92879
 P: (951) 737-5599 | F: (951) 737-0330

DATE: MAY 31, 2019

05/31/2019

FIG 1001 TRANSVERSE LOAD

DETAIL
6LAT30



PIPE SIZE	1"	1 1/4" -> 2"	2 1/2"	3" -> 4"	5" -> 8"
MAX LOAD PER BRACE (lbs) PER FM TESTING	1800	1230	800	850	510

LARR APPROVAL



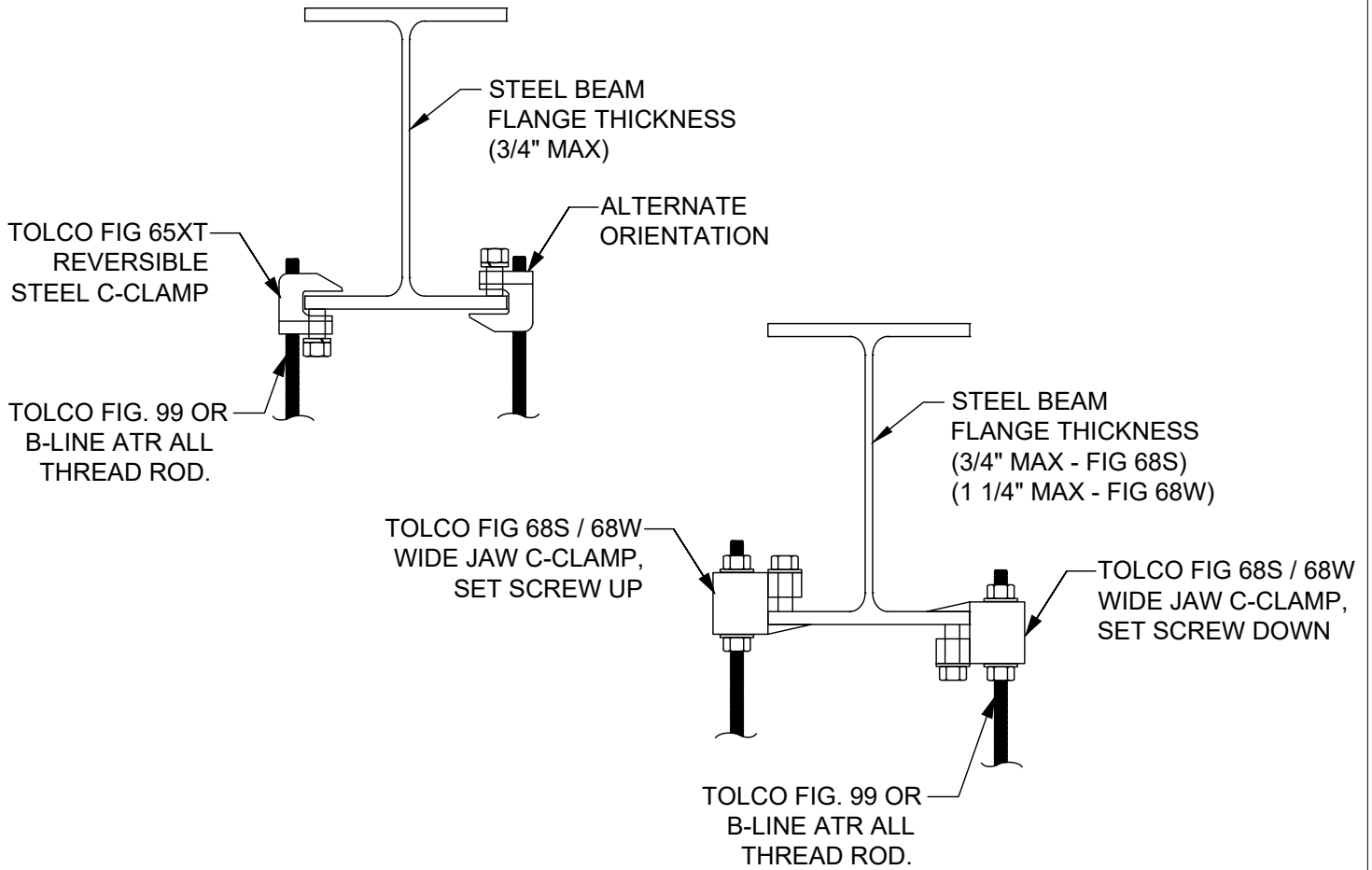
COOPER B-Line | TOLCO
 1375 SAMPSON AVENUE | CORONA, CA. 92879
 P: (951) 737-5599 | F: (951) 737-0330

DATE: MAY 31, 2019

05/31/2019

B-LINE 65XT, 68S, AND 68W BEAM CLAMPS

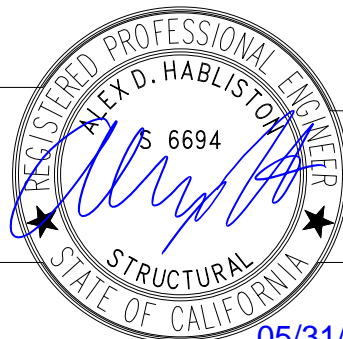
DETAIL
HC02



MAX LOAD PER CLAMP PER FM CRITERIA (5.0x DL + 250 LB)
LOADS SHOWN THUS '[XXX]' ARE ALLOWABLE DEAD LOAD ON CLAMP

PIPE SIZE	3/4"	1"	1 1/4"	1 1/2"	2"	2 1/2"	3"	3 1/2"	4"	5"	6"	8"
FIGURE 65XT	340 [18]	410 [32]	430 [36]	520 [54]	635 [77]	940 [138]	1060 [162]	1255 [201]	1475 [245]	N/A N/A	N/A N/A	N/A N/A
FIGURE 68S (SET SCREW UP/DOWN)	340 [18]	410 [32]	430 [36]	520 [54]	635 [77]	940 [138]	1060 [162]	1255 [201]	1475 [245]	N/A N/A	N/A N/A	N/A N/A
FIGURE 68S (SET SCREW DOWN)	340 [18]	410 [32]	430 [36]	520 [54]	635 [77]	940 [138]	1060 [162]	1255 [201]	1475 [245]	2000 [350]	2615 [473]	3800 [710]
FIGURE 68W	340 [18]	410 [32]	430 [36]	520 [54]	635 [77]	940 [138]	1060 [162]	1255 [201]	1475 [245]	N/A N/A	N/A N/A	N/A N/A

LARR APPROVAL



COOPER B-Line | **TOLCO**
1375 SAMPSON AVENUE | CORONA, CA. 92879
P: (951) 737-5599 | F: (951) 737-0330

DATE: MAY 31, 2019

05/31/2019

LARR 25949
Page 32 of 32