



## Eaton's B-Line Division CoSPEC Specifier Center



© 2019 Eaton. All rights reserved.

# Why use CoSPEC resource?

---

- Select, view and download content for Eaton B-Line series products
- Multiple formats available
  - Proprietary and standard 2D & 3D CAD
  - Aveva Plant PDMS
  - Intergraph® SmartPlant® 3D
  - Autodesk® Revit®
  - Product information and submittals
  - Graphic files
  - And more
- Simple to use – follow the steps on the next few slides to learn how!

# Step 1: Navigate to CoSPEC resource

## Google Chrome is required

---



Navigation to site:

- [Eaton.com/cospec](https://Eaton.com/cospec)

# Step 2A: select a B-Line series product family

---

4Dimension strut system

Cabinets and electronic enclosures

Cable tray systems and supports /  
Cable management

Comm/Data equipment supports

Electrical enclosures and wireway

Electrical rough in pre-fab system  
from Ruff-IN

Pipe hangers and mechanical  
supports

Safety gratings

Seismic bracing

Strut systems

# Step 3A: Select a product type

## Example shown is B-Line series cable tray

---

Channel cable tray - metallic

Channel cable tray - non-metallic (GRP)

FLEXTRAY cable management

KwikSplice cable tray systems

Metallic cable ladder systems (IEC)

Metallic cable tray systems (NEMA)

Non-metallic cable tray systems (GRP)

Perforated and solid cable tray - Middle East

Perforated and solid cable tray - Northern Asia

Redi-Rail cable tray systems

- Once you are logged in, you can select one of the cable tray families
  - Metallic channel cable tray
  - Non-metallic channel cable tray
  - Flextray
  - KwikSplice
  - IEC cable ladder
  - NEMA cable tray / ladder
  - Perforated and solid cable tray – Middle East
  - Perforated and solid cable tray – Asia
  - Redi-Rail cable tray system
- This gets you to CoSPEC for this specific family

# 3B: Create your account for CoSPEC

## New Account – here's how to register

CAD, BIM AND SUBMITTALS

[CAD](#) [New Account](#)

You must have an account and be logged in to download drawing files.

Email  PIN

**New account**

\* First/Last Name

\* Title

\* Company Name

\* Address

\* City

\* State

\* ZIP Code

\* Country

\* Email

\* PIN#

\* Phone

\* Industry

\* Type

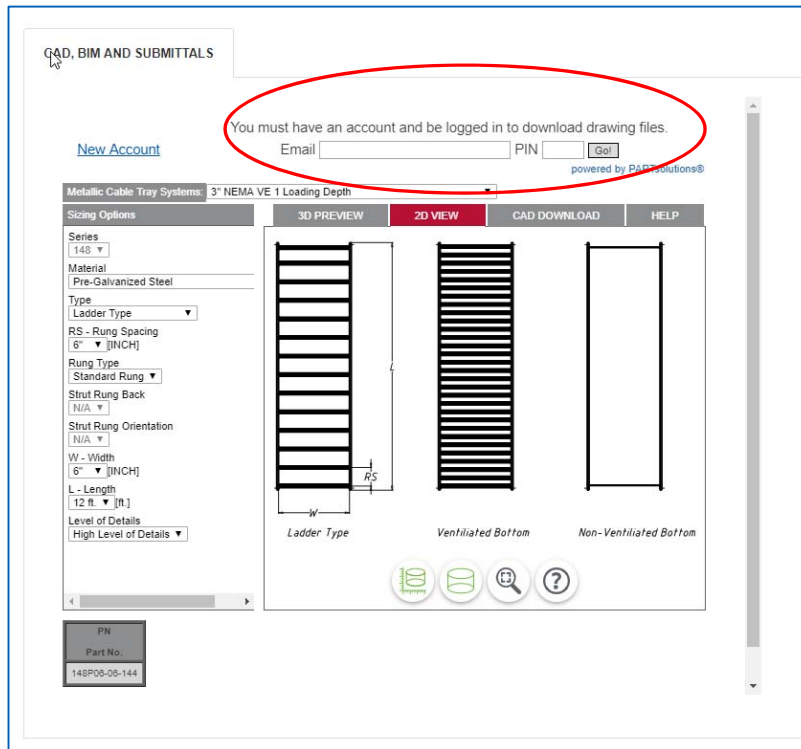
Opt-in to newsletters?

\* I agree with terms and conditions  [View End User License Agreement \(EULA\) revised May, 11 2012](#)

1. Select “New Account”
2. Enter your email address
3. Create PIN number (pick any number you would like)
4. This email address and PIN required each time you log in.
5. Complete all required fields
6. Once you complete this information you can access the tool

# 3C: Log into CoSPEC resource

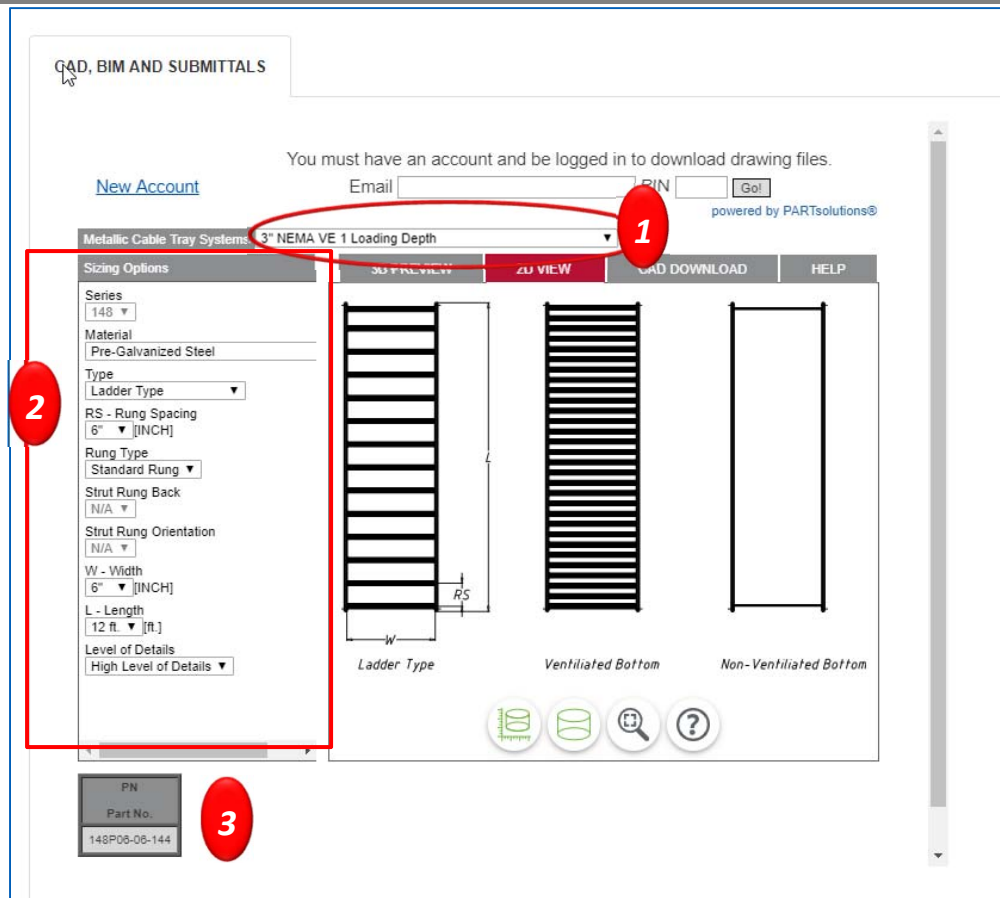
Already registered, simply log in using



1. Enter your email address and PIN number that you created at the time of registering your new account.
2. Click GO!

# Step 4: Select drop downs

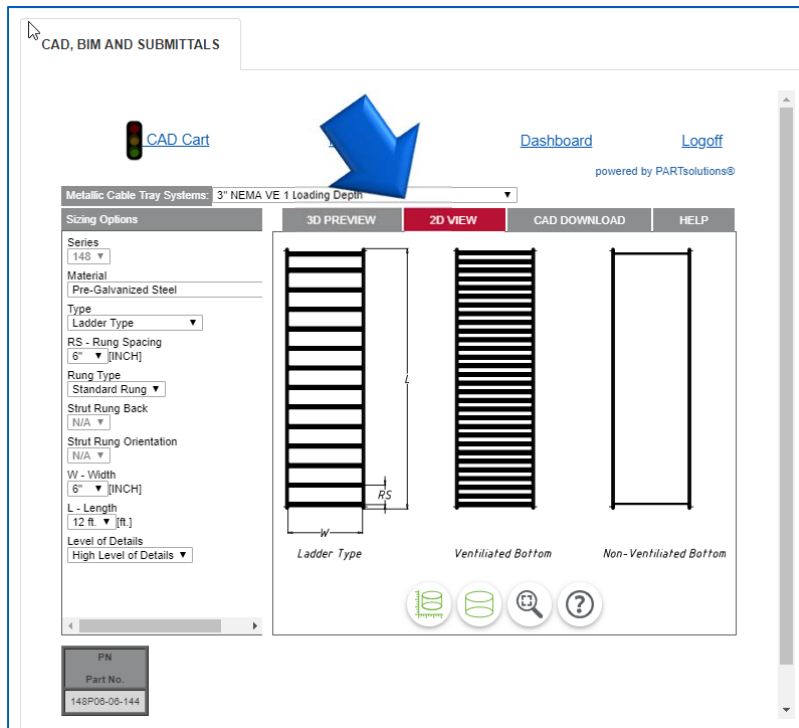
Gets you to exact product option



1. Select product type from top drop down menu
2. Choose variables on left hand 'Sizing Options' dialog
3. Part number / other variable data will appear

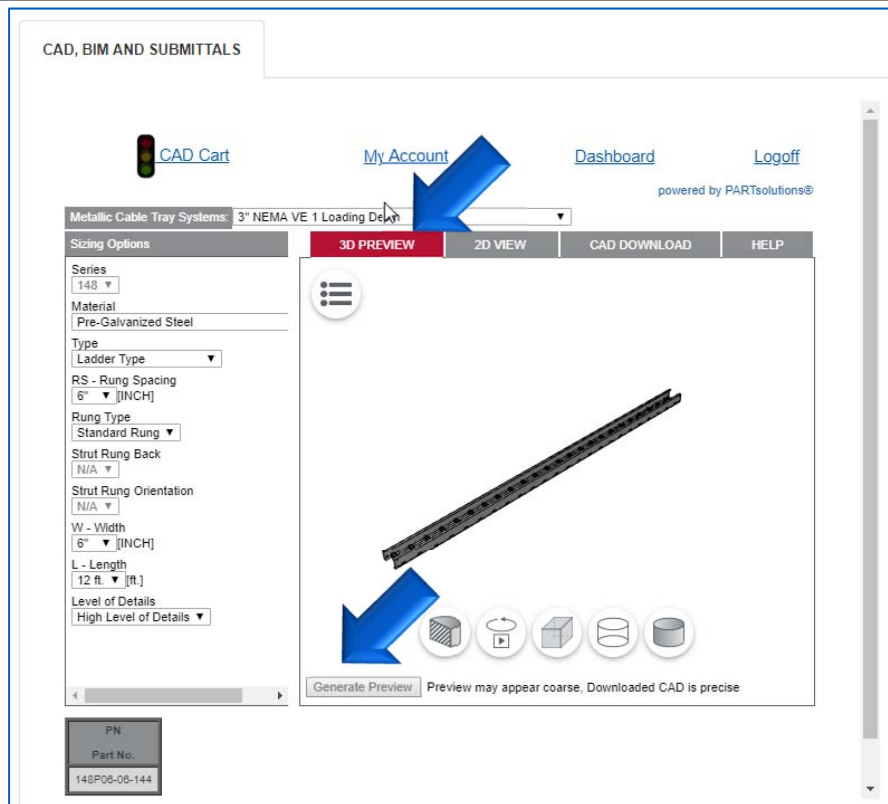


## Step 5A: View Selected Product in 2D



- Select 2D view tab
- Shows overhead and front views
  - Requires Java
- View dimensions, center lines, and more

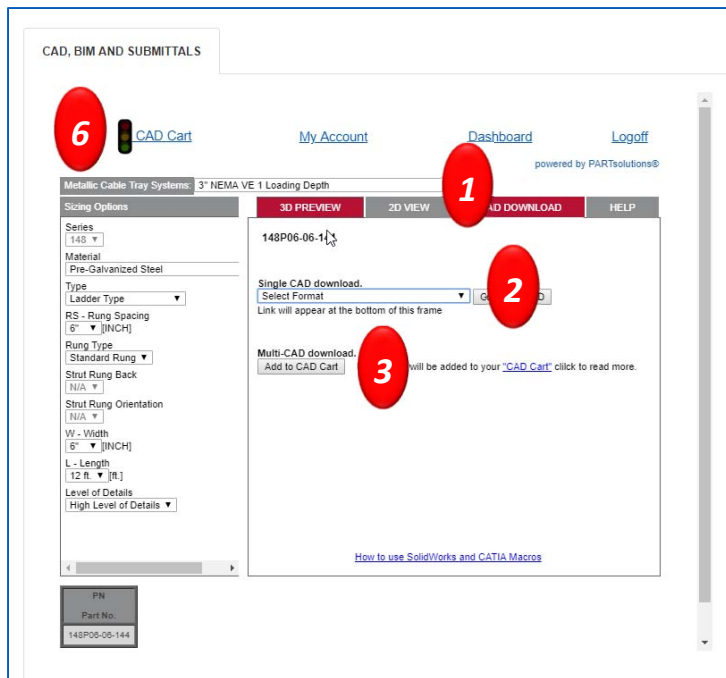
## Step 5B: View Selected Product in 3D



- Click 3D and generate preview
  - Requires Active X control install
- Full-featured viewer: move, zoom in/out, snap to views, move around, etc.
  - Use options at bottom of image to change views.
- Stereoscopic 3D works with 3D glasses to float in the screen

# Step 6A-1: Download Design Content

## Download multiple files – Use Google Chrome only



1. Click “CAD Download” tab
2. Select option from drop down under “Single CAD” download
  - 2D or 3D standard, non-proprietary
  - 2D or 3D proprietary, native files
  - Aveva Plant PDMS Equipment Spec
  - PDF cut sheets / submittals / graphics / more
3. Click “Add to CAD Cart” tab
4. Repeat steps 2 and 3 as needed
  - Up to 25 items can be added to CAD cart
5. Repeat steps 2 and 3 as needed
6. Watch for color changes on “CAD Cart” traffic light
  - Red – still generating files
  - Yellow – some files are ready to download
  - Green – all files in CAD cart are ready to download

# Step 6A-2: Download Design Content

## View CAD Cart – Use Google Chrome only

The screenshot shows the CAD Cart interface. At the top, there are links for [CAD](#), [CAD Cart](#) (circled in red), [My Account](#), and [Logoff](#). Below the links, the title "CAD Cart" is displayed. A table lists four items, each with a traffic light status indicator (circled in red) in the "Status" column. The table columns are: Retrieve?, Status, SKU, Description, CAD Format, and Dates (Initial, Last, Expires). Below the table, a note states "Files can take up to 5 minutes to generate." and a "Retrieve files" button is visible.

Retrieve?	Status	SKU	Description	CAD Format	Dates		
					Initial	Last	Expires
		150G300CA12ILL-0150-3000			12/05/2018 6:51 AM	Never	12/12/2018 6:51 AM
		150G300CA20ILL-0750-3000			12/05/2018 6:51 AM	Never	12/12/2018 6:51 AM
		150G300CA20CLHB-0750-30R0300			12/05/2018 6:52 AM	Never	12/12/2018 6:52 AM
		150G300CA12CLCSF-0150-R0300			12/05/2018 6:52 AM	Never	12/12/2018 6:52 AM

Files can take up to 5 minutes to generate.

To view all items in CAD Cart

- Click on **CAD Cart**
- New window will open
- Under status each file will feature a **traffic light**
  - **Red** – still generating files
  - **Yellow** – some files are ready to download
  - **Green** – all files in CAD cart are ready to download
- Once all are **green**, click on “Retrieve files”

# Step 6A-3: Download Design Content

## Retrieve files– Use Google Chrome only

The screenshot shows the CAD Cart interface with a table of items and a Windows File Explorer window showing the extracted files. The CAD Cart interface includes a 'Retrieve files' button and a note that files can take up to 5 minutes to generate. The File Explorer window shows a 'Compressed Folder Tools' tab with 'Extract' and 'Extract all' options, and a list of files including a manifest.txt and several compressed folders.

Retrieve?	Status	SKU	Description	CAD Format	Dates		
					Initial	Last	Expires
<input checked="" type="checkbox"/>		150G300CA12ILL-0150-3000	150 Height		12/05/2018 6:51 AM	Never	12/12/2018 6:51 AM
<input checked="" type="checkbox"/>		150G300CA20ILL-0750-3000	150 Height		12/05/2018 6:51 AM	Never	12/12/2018 6:51 AM
<input checked="" type="checkbox"/>		150G300CA20CLHB-0750-30R0300	Horizontal Bends		12/05/2018 6:52 AM	Never	12/12/2018 6:52 AM
<input checked="" type="checkbox"/>		150G300CA12CLCSF-0150-R0300	Cable Support Fittings		12/05/2018 6:52 AM	Never	12/12/2018 6:52 AM

Files can take up to 5 minutes to generate.

Retrieve files

Compressed Folder Tools: cad5c07e7c9.zip

Extract

Extract all

Extract To

This PC > Downloads > cad5c07e7c9.zip

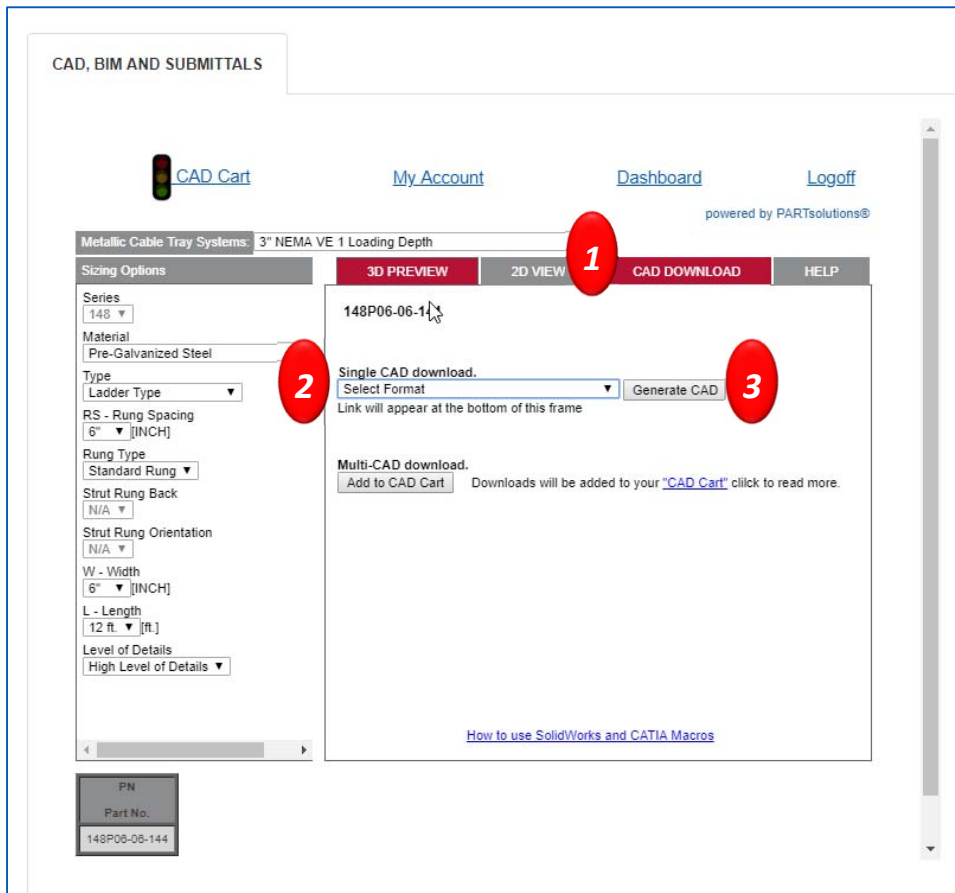
Name	Type	Compressed size	Password
manifest.txt	Text Document	1 KB	No
PARTserver020181205155134651380...	Compressed (zipped) Fol...	50 KB	No
PARTserver020181205155148394380...	Compressed (zipped) Fol...	62 KB	No
PARTserver020181205155222901381...	Compressed (zipped) Fol...	62 KB	No
PARTserver020181205155258032382...	Compressed (zipped) Fol...	48 KB	No

### To view all items in CAD Cart

- Once all are green, click boxes that you want to retrieve
- Once you have checked all items you want to retrieve / download, click on “Retrieve files”
- Select a location on your computer / drive to download the file (Save or Save as function)
  - Files are zipped
  - Manifest in text format provides information on which files equal your request.

# Step 6A: Download Design Content

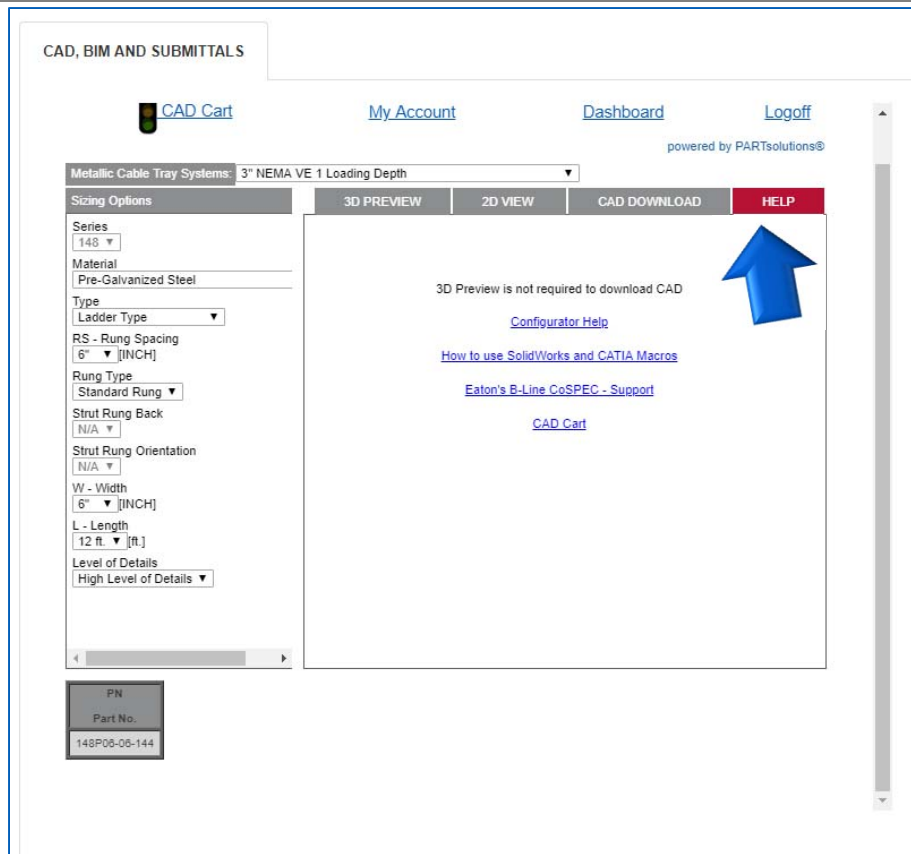
## To download one at a time – Use Google Chrome



1. Click “CAD Cart”
2. Select drop down under “Single CAD” download then select your output format
  - 2D or 3D standard, non-proprietary
  - 2D or 3D proprietary, native files
  - Graphics
  - Aveva Plant PDMS Equipment Spec
  - PDF cut sheets / submittals
3. Click on “Generate CAD”
4. Download will appear as zip file named “Partserver.....zip”
  - Manifest in text format provides information on which files equal your request
  - File will be delivered based on your output selection in step 2

# Need more help or information

## Use the help resource within CoSPEC center



- Click on HELP tab for assistance
  - Configurator help
  - Technical requirements
  - CoSPEC support for B-Line series solutions
  - CAD Cart step by step instructions
- Or contact the B-Line Division
  - Tech support:
    - [blinetechsupport@Eaton.com](mailto:blinetechsupport@Eaton.com)
  - Email us:
    - [blineus@eaton.com](mailto:blineus@eaton.com)



*Powering Business Worldwide*

[Eaton.com/cospec](https://www.eaton.com/cospec)

