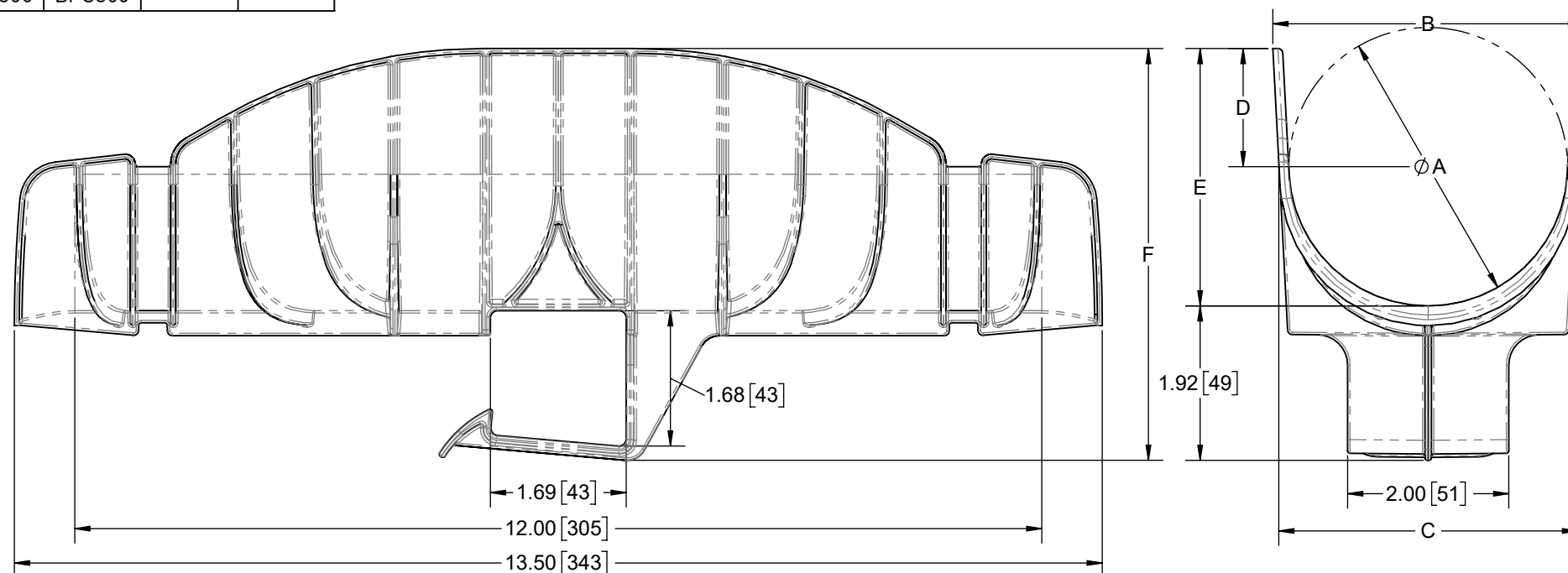
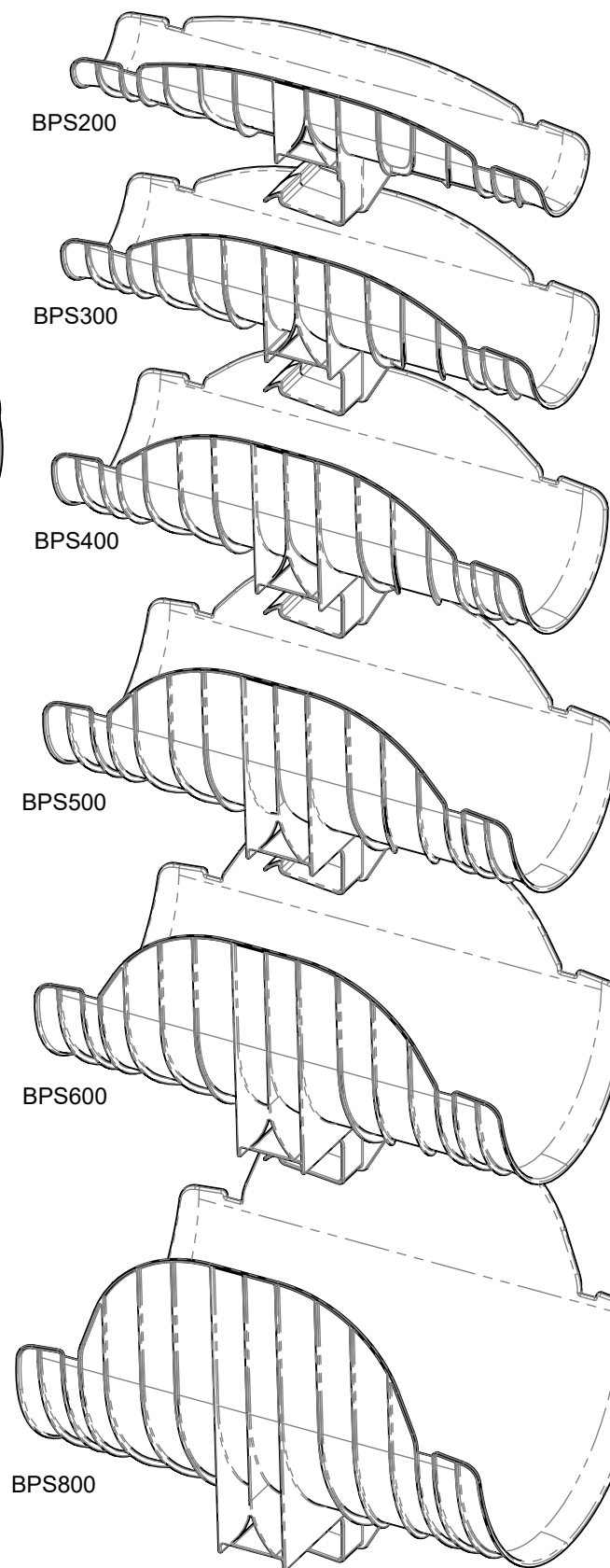
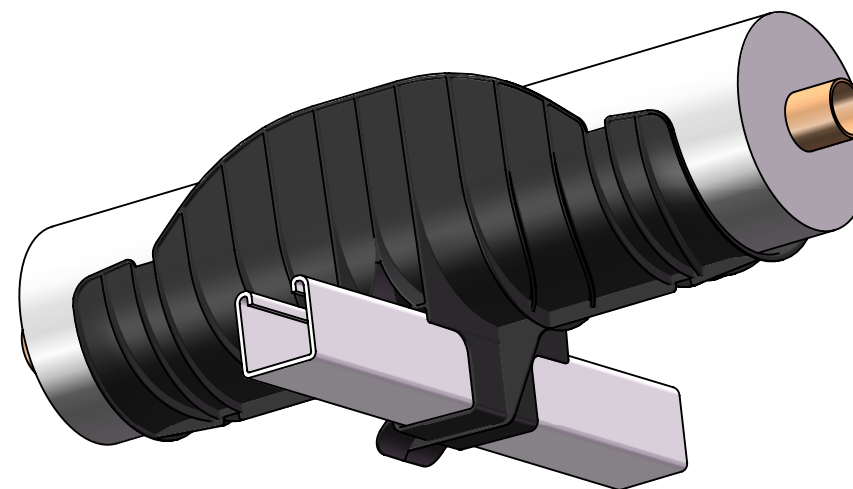


PART NUMBER	ØA		B		C		D		E		F		WT/PC	
	IN.	MM	IN.	MM	IN.	MM	IN.	MM	IN.	MM	IN.	MM	LB	KG
BPS200	2.35	60	2.69	68	2.59	66	1.00	25	2.17	55	4.09	104	0.21	0.09
BPS300	3.46	88	3.86	98	3.71	94	1.47	37	3.20	81	5.11	130	0.29	0.13
BPS400	4.50	114	4.95	126	4.75	121	1.94	49	4.19	106	6.11	155	0.36	0.16
BPS500	5.52	140	6.02	153	5.78	147	2.41	61	5.17	131	7.09	180	0.44	0.20
BPS600	6.50	165	7.05	179	6.76	172	2.89	73	6.14	156	8.05	205	0.53	0.24
BPS800	8.64	220	9.32	237	8.90	226	4.02	102	8.34	212	10.26	261	0.72	0.33

COPPER TUBING SIZE	INSULATION THICKNESS				
	1/2"	3/4"	1"	1 1/2"	2"
1/4"	BPS200	BPS200	BPS300	BPS300	BPS400
3/8"	BPS200	BPS200	BPS300	BPS400	BPS400
1/2"	BPS200	BPS200	BPS300	BPS400	BPS500
5/8"	BPS200	BPS200	BPS300	BPS400	BPS500
3/4"	BPS200	BPS300	BPS300	BPS400	BPS500
1"	BPS200	BPS300	BPS300	BPS400	BPS500
1 1/4"	BPS300	BPS300	BPS300	BPS400	BPS500
1 1/2"	BPS300	BPS300	BPS400	BPS500	BPS600
2"	BPS300	BPS400	BPS400	BPS500	BPS600
2 1/2"	BPS400	BPS400	BPS500	BPS600	BPS800
3"	BPS400	BPS500	BPS500	BPS600	BPS800
3 1/2"	BPS500	BPS500	BPS600	BPS800	BPS800
4"	BPS500	BPS600	BPS600	BPS800	BPS800
5"	BPS600	BPS800	BPS800	BPS800	—
6"	BPS800	BPS800	BPS800	—	—

SCHD. 40/80 PIPE	INSULATION THICKNESS				
	1/2"	3/4"	1"	1 1/2"	2"
1/4"	BPS200	BPS200	BPS300	BPS400	BPS500
3/8"	BPS200	BPS200	BPS300	BPS400	BPS500
1/2"	BPS200	BPS200	BPS300	BPS400	BPS500
3/4"	BPS200	BPS300	BPS300	BPS400	BPS500
1"	BPS200	BPS300	BPS300	BPS400	BPS500
1 1/4"	BPS300	BPS300	BPS400	BPS500	BPS600
1 1/2"	BPS300	BPS300	BPS400	BPS500	BPS600
2"	BPS300	BPS400	BPS400	BPS500	BPS600
2 1/2"	BPS400	BPS400	BPS500	BPS600	BPS800
3"	BPS400	BPS500	BPS500	BPS600	BPS800
3 1/2"	BPS500	BPS500	BPS600	BPS800	BPS800
4"	BPS500	BPS600	BPS600	BPS800	BPS800
5"	BPS800	BPS800	BPS800	BPS800	—
6"	BPS800	BPS800	BPS800	—	—



DIMENSIONS IN BRACKETS [] ARE MILLIMETERS

- USE TO SUPPORT AND PROTECT HORIZONTAL RUNS OF INSULATED PIPE OR TUBING.
- SNAPS DIRECTLY ON 1 5/8" X 1 5/8" CHANNEL WITHOUT TOOLS.
- NON-ADHESIVE TEXTURED INTERIOR SURFACE ALLOWS PIPE, TUBING AND INSULATION TO EXPAND OR CONTRACT WITHOUT DAMAGE TO INSULATION.
- FULL 12" INSULATION SUPPORT.
- MATERIAL: HIGH-IMPACT POLYPROPYLENE COPOLYMER
- UV RESISTANT
- OPERATING TEMPERATURE: -40°F (-40°C) TO +178°F (81°C)
- PAINTABLE
- AVAILABLE IN BLACK OR WHITE.
- ADD COLOR SUFFIX TO PART NUMBER (B=BLACK, W=WHITE)
- EXAMPLE: BPS200B
- BPS400W
- cULus CLASSIFIED FOR USA (UL723/ASTM E84) AND CANADA (CAN/ULC-S102.2)



509 W. Monroe Street
Highland, IL 62249
Phone (618) 654-2184
FAX (618) 654-5499

www.b-line.com

SUBMITTAL DRAWING

TITLE:
**SNAP 'N SHIELD™
BPS SERIES
PIPE INSULATION SHIELDS
FOR 1 5/8" SQ. STRUT**

UNLESS OTHERWISE SPECIFIED MATERIAL SHOWN HAS BEEN FABRICATED IN ACCORDANCE WITH THIS DRAWING.

REFERENCE DWG(S):	SUBMITTAL NO: S00035710
DRAWN BY: MLW	REV: A
DATE: 07/18/18	SHEET: 1 OF 1
MODEL SOURCE FILE: S00035710	REV: 00

PATENT(S) PENDING