



4Dimension strut system
Changing how we build our future



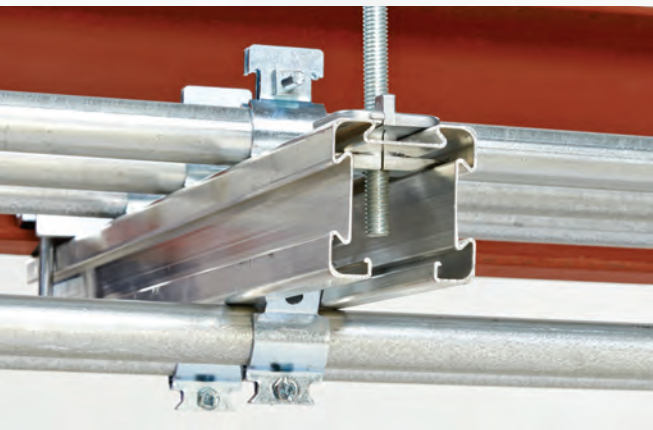
Powering Business Worldwide

4Dimension strut system

Changing how we build our future

Eaton's 4Dimension™ strut system changes how installers will build and install support systems for electrical, mechanical, plumbing, HVAC and data centers in new and retrofit commercial and industrial applications.

The revolutionary strut profile design and innovative accessories help installers compress project schedules and cut material costs without sacrificing load while increasing configuration flexibility.



Innovative features

- Profiles with two-sided and four-sided functionality
- Superior strength, lighter weight for improved performance
- Modular design provides versatility
- SH hole accepts 5/8" hardware
- Innovative fitting solutions with virtually hundreds of possibilities
- Ideal for new and retrofit applications
- Meets or exceeds MFMA standards

Lowest total cost solution

- Up to 50% reduction in installation time for trapeze applications
- Up to 50% reduction in material cost in many applications
- Helps save space and weight by fully utilizing multiple sides for ease and flexibility of installation
- Functional replacement for back to back strut system, with considerable cost, time, and material savings
- Compatible with most traditional fittings and accessories
- Multi-side design reduces complexity of higher cost fittings required for many applications



4Dimension Strut Channel Nuts

The unique designs of the 4Dimension strut channel nuts can be used on multiple sides of the 4Dimension strut channel, allowing for numerous designs and applications. Wire Wing and Slide-In Nuts can also be used with traditional strut.



Slide-In Nut*

- Able to use on all four sides of 4D22 strut
- Works in dove-tail of 4D21
- Helps maximize options in tight spaces



Dove-Tail Twirl-Nut™*

- Can be inserted at any length of the dove-tail strut channel
- Helps save time during installation



Dove-Tail Combo Nut Washer*

- Saves time during installation
- Eliminates the need for flat washer
- Works on dove-tail side of channel

4Dimension Strut Fittings & Accessories

Innovative strut fittings and accessories help eliminate the need for special orders of welded configurations.



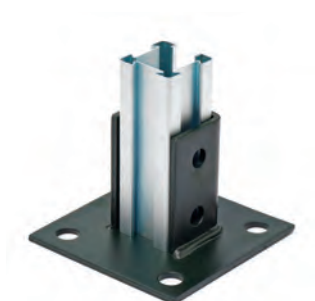
Dove-Tail Bar*

- Used to join any two dove-tail strut lengths for horizontal applications; use recommended set screw
- Eliminates the need for special order of several welded strut combinations



Dual Dove-Tail Nut*

- Used to join any two dove-tail strut lengths (one with SH slot)
- Eliminates the need for special order of A and D strut combination designs



Strut System Post Base

- Base supports for vertical and horizontal mounting
- Works with 4D22 & 4D21

* Patented - See patent numbers on back.

4Dimension Strut Clamps

Strut clamps are designed to provide additional functionality and flexibility of modular strut design.



Universal Pipe Clamp*

- Ideal for traditional strut continuous open slot, 4Dimension strut continuous slot and dove-tail for 4" and smaller pipe clamps
- See catalog for load ratings in three directions
- UL listed



Universal Beam Clamp*

- Helps save time by eliminating the need to remove nut and washer during installation
- Compatible with 4Dimension and traditional strut systems



Strengthening Clamp*

- Two-piece break apart design
- Recommended for strut grid or other applications that require higher loads
- Can be used as hanger

4Dimension Strut System Accessories



End Caps

- Sized for 4D22 and 4D21 strut
- Available in: White, Yellow, Black, Grey, and Green
- Material (PVC/Vinyl/Polyvinyl Chloride)
- Withstands intermittent temperatures up to 350° F (177° C) and 200° F (93° C) continuous

4Dimension Strut System Trapeze Solutions

Two trapeze solutions designed to provide time savings and flexibility during installation.



Flip Clip™ Solution*

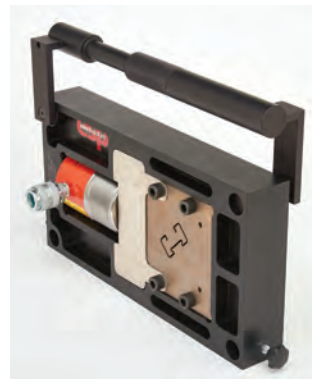
- Saves up to 30% on installation time over traditional strut trapeze methods
- Eliminates up to 50% materials required to assemble; attaches to 3/8" and 1/2" ATR
- Clip self-locks into strut with SH slot pattern
- Can be used with long slot hole pattern and solid strut by using self-tap screw to hold in place



Turn and Lock Solution*

- Saves up to 50% on installation time over traditional strut trapeze methods
- Eliminates the need for lock nut or hex nut
- Helps reduce parts to assemble by up to 50%
- Attaches onto 3/8" ATR at any point along the ATR

Hydraulic Strut Cutter



- Patented **esp** hydraulic strut cutter easily cuts 4Dimension strut and a variety of B-Line series strut profiles in seconds
- Produces clean cuts without burrs or sharp edges - no post-processing necessary
- Die sets available for cutting 4D21, 4D22, B22, B24, B26, B52, B54, B56 strut profiles
- Die life: Thousands of cuts from a single set of blades

* Patented - See patent numbers on back.



Save up to 50% on material and installation time

With the introduction of the 4Dimension™ strut system with four-sided functionality, Eaton has expanded strut into the next dimension by delivering up to 50% savings on materials and installation time.

MATERIAL SAVINGS



INSTALLATION TIME



TOOLS & RESOURCES

CoSPEC™ Specifier Center

A one-stop design resource for B-Line series products. With nearly 100 different CAD, BIM, and graphic formats, customers can easily select, view and download B-Line series products in 2D and 3D.

To learn more, visit Eaton.com/CoSPEC.

Takeoff Services

For large project bids and take-off list of materials, we can provide the details you need to quickly help you estimate your costs. When it comes to custom requirements, our team of sales engineers can help with advanced quotes and custom solutions as required.

eLearning Videos & Instruction Sheets

We offer a variety of eLearning product and services from basic to advance.

To learn more, visit Eaton.com/4Dimension.

On-Line Calculators

Helps calculate the potential material and labor savings in your project by utilizing the 4Dimension strut system.

To learn more, visit Eaton.com/4Dimension.

Changing how we build our future

For additional support, contact
your local B-Line series specialist at:

- Phone: 800-851-7415
- Fax: 618-654-1917

To learn more,
visit Eaton.com/4Dimension



Patents	9,470,339	9,580,900	9,574,589	9,651,171	9,683,590
	9,732,887	9,746,105	9,790,980	9,926,957	9,790,980
	9,580,900	9,347,213	9,470,339	9,651,171	9,587,767
	9,683,590	9,926,957	9,470,339	9,546,744	9,989,169
	9,746,105	9,453,592	9,982,837	9,458,952	9,574,589
	10,012,255	10,100,861			

This list of patents is exemplary and not exhaustive and there may or may not be other patents protecting these products.

For more information, visit
Eaton.com/4Dimension.

U.S. Customer Service Center is staffed Monday through Friday from 7 a.m. to 5 p.m. Central Standard Time.

Eaton
 509 West Monroe Street
 Highland, IL 62249
 United States
 800-851-7415

Eaton - Canada
 5925 McLaughlin Road
 Mississauga, ON L5R 1B8
 Canada
 800-569-3660

Eaton
 1000 Eaton Boulevard
 Cleveland, OH 44122
 United States
 Eaton.com

© 2019 Eaton
 All Rights Reserved
 Printed in USA
 Publication No. SA300010EN
 August 2019 4DVP-19

Eaton is a registered trademark.
 All other trademarks are property
 of their respective owners.

Follow us on social media to get the
 latest product and support information.

