

# Server & Network Enclosures

## V-Line Enclosure

Removable cable entry knockout plates

Range of single & double door options with a variety of locking choices

Fully adjustable 19" rails. 29½" wide cabinet offer offset and 23" mounting

Square hole or #12-24 tapped hole mounting rail options

Doors can be configured left hand (LH) or right hand (RH) hinged

Open base with infill panel & filter options

Fully configurable top panel assembly

Lockable side panels

Extensive range of mechanical and electronic locking options

Plain & vented side panel options

New ganging knockouts allow cabinets to be ganged with or without side panels

Leveling feet supplied as standard with optional castor availability

Fully welded steel frame structure



Standard cabinet finish is a black hard wearing epoxy polyester powder coat paint, color reference RAL 9005. Enclosures are also available finished in Light Gray, reference NCS 1502-Y, but may be subject to increased lead times.

Server & network enclosures

# Server & Network Enclosures

V-Line Enclosure

The V-Line cabinet platform is designed to provide high quality enclosure solutions to the market at competitive prices and short lead times. Ordering the V-Line solution can be done by ordering individual components or ordering a configured enclosure solution with a single part number.

Use the following matrix to build the part number for your desired V-Line enclosure configuration.

Step 1	V	V-Line Cabinet Range	<b>Options</b>				
	42	Cabinet Effective Height	24U	38U	42U	45U	47U
	24	Cabinet Overall Width	24 = 24"		29 = 29½"		
	42	Cabinet Overall Depth	24 = 24"	30 = 30"	36 = 36"	42 = 42"	48 = 48"
Step 2	A	Mounting Rail Type	A = 19" Square Holes B = 19" #12-24 Tapped Holes		C = 23" Square Holes * D = 23" #12-24 Tapped Holes * <i>* Only on 29½" wide cabinets</i>		
	C	Mounting Rail Position	L = Offset Left* R = Offset Right* C = Centered		<i>* Only on 29½" wide cabinets</i>		
Step 3	V	Front Door	V = High Flow Vented LH W = High Flow Vented RH X = High Flow Vented Split* S = Solid LH T = Solid RH U = Solid Split* N = None		A = Acrylic LH B = Acrylic RH C = Vented Acrylic LH D = Vented Acrylic RH F = Split Fan Door* <i>* Only available with T &amp; D locking options.</i>		
	X	Rear Door					
	S	Locking Options	S = Swing Handle (single point) C = Combo Handle (single point) T = Swing Handle (3-point)		D = Combo Handle (3-point) P = i-PAL Handle (2-point) N = None		
Step 4	S	Left Hand (LH) Side Panel Configuration	S = Solid Full Height* T = Solid Split**		<i>* Not available on 42U x 48", 45U x 48", &amp; 47U x 48" options</i>		
	S	Right Hand (RH) Side Panel Configuration	V = Vented Full Height* W = Vented Split** N = None		<i>** Not available on 24U high options</i>		
Step 5	V	Top Panel Configuration	S = Solid Top V = Vented Top N = None	2 = 210 CFM Fan Top 4 = 420 CFM Fan Top 5 = 550 CFM Fan Top	1 = 1100 CFM Fan Top* <i>* Not available on 24" wide deep units</i>		
Step 6	B	Finish	A = Gray    B = Black				
Step 7	+	Accessories	See Pages 255 - 257				

Server & network enclosures

What features do you require for your electronic cabinet solution? Whatever you require, you can be sure that the V-Line cabinet platform from Eaton will meet your needs. For assistance with selecting the optimal cabinet solution for your network, contact a B-Line series sales representative or call our sales engineering department at (800) 851-7415.

# Server & Network Enclosures

V-Line Colocation Enclosure

Server & network enclosures

VC	V-Line™ Co-Locate Cabinet	Options
2	Compartments	2 = 2-Bay (22U per compartment)    3 = 3-Bay (14U per compartment)
45	Cabinet Height	45U
29	Cabinet Width	29 = 29½"
42	Cabinet Depth	36 = 36"    42 = 42"    48 = 48"
A	Mounting Rail Type	A = 19" Square Holes B = 19" #12-24 Tapped Holes <i>Rails only available centered on co-locate cabinets</i>
V	Front Door	V = High Flow Vented LH W = High Flow Vented RH X = High Flow Vented Split* S = Solid LH T = Solid RH N = None A = Acrylic LH B = Acrylic RH
X	Rear Door	* Only available with T & D locking options.
S	Locking Options	S = Swing Handle (single point) C = Combo Handle (single point) T = Swing Handle (3-point) D = Combo Handle (3-point) P = i-PAL Handle (2-point) N = None
S	Left Hand (LH) Side Panel Configuration	S = Solid V = Vented N = None
S	Right Hand (RH) Side Panel Configuration	
V	Top Panel Configuration	S = Solid Top    2 = 210 CFM Fan Top    1 = 1100 CFM Fan Top V = Vented Top    4 = 420 CFM Fan Top N = None    5 = 550 CFM Fan Top
B	Finish	A = Gray    B = Black



## Caster Kit

- Unique, drop-in design that helps simplify the installation process
- A 300 lb (136kg) dynamic load rating each allowing for a 1200 lb (544kg) dynamic load for cabinet on casters
- Includes four casters and installation hardware

Part Number	Weight Each	
	lbs.	(kg)
VCK	7	(3)

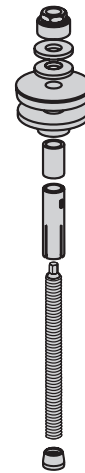


VSBDK

## Seismic Bolt-Down Kit

- Includes four anchor plates and is used with isolated seismic anchors to attach the frame to a concrete floor in seismic applications
- Includes the anchor plates and the hardware required to attach to the V-Line frame
- Seismic anchors are sold separately

Part Number	Description	Weight Each	
		lbs.	(kg)
VSBDK	Seismic Bolt-Down Kit	2.9	(1.3)
ASSAM12157HN	Seismic Anchors (Hex Nut Type)	0.1	(0.05)



ASSAM12157HN

Server & network enclosures



Cable Entry Knockout Plate

## Removable / Replaceable Cable Entry Knockout Plates

- Plates are designed to help maximize the area available for cable entry into the V-Line enclosures while eliminating large open areas that would limit security, aesthetics and the ability to keep contaminants and debris out
- Four of these plates are included with each V-Line frame
- 13" (330mm) x 3¾" (95mm) removable plates feature three 2½" (58mm) / 3" (76mm) concentric knockouts allowing numerous different cable entry options in each corner
- The bottom panel also includes four VOZIP plates as well for the same benefits when bringing cables in from the bottom of the enclosure
- Optional plastic bushings fit in the openings to enhance appearance and offer additional protection for the cables.



Plastic Bushing

Part Number	Description	Weight Each	
		lbs.	(kg)
VOZIP	Cable Entry Knockout Plate	0.7	(0.3)
E013603	2½" Plastic Bushing (2 pack)	0.1	(0.05)
E018757	3" Plastic Bushing (2 pack)	0.1	(0.05)

# Server & Network Enclosures

## V-Line Enclosure Accessories

### Brush Strips Cable Opening Plates

These plates are designed to maximize the area available for cable entry into the V-Line enclosures while limiting air leakage out of the cabinet and limiting the entry of dust and debris.

- 13" (330mm) x 33/4" (95mm) removable plates install perfectly in the space where the VOZIP plates are installed on the V-Line frames

- The V-Line bottom panel also includes four spaces where this plate can be used for the same benefits when bringing cables in from the bottom of the enclosure



Part Number	Weight Each	
	lbs.	(kg)
<b>VBCOK</b>	0.25	(0.11)

### Air Dam

Brush strips help manipulate airflow through the cabinet.

- Brush strip sections are secured to the back of the mounting rails with plastic push-in fasteners and do not interfere with any available mounting spaces
- Cable management fingers can be purchased separately



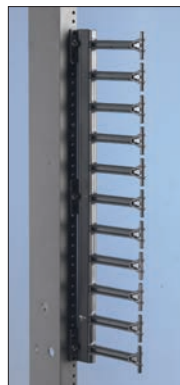
Server & network enclosures

<b>VVB</b>	<b>V-LINE™ Cabinet Vertical Baffle</b>	<b>Options</b>
<b>1</b>	<b>Rail Mounting Configuration</b>	<b>1 = 19"</b> <b>2 = *23"</b> <i>* 23" mounting centers are only available in 29½" wide cabinets</i>
<b>C</b>	<b>Rail Offset Position</b>	<b>C = Center</b> <b>D = *Offset</b> <i>* Offset configuration is only available in 29½" wide cabinets</i>
<b>42</b>	<b>Cabinet Height</b>	<b>24U, 38U, 42U, 45U, 47U</b>
<b>24</b>	<b>Cabinet Width</b>	<b>24 = 24"    29 = 29½"</b>
<b>B</b>	<b>Finish</b>	<b>B = Black    G = Gray</b>

### Vertical Cable Manager Kit

This kit is comprised of an 11U high piece of plastic finger section with slotted fixing points to match the vertical U pitches.

- Finger sections can be mounted and secured in tandem with any 19" equipment



Part Number	Description	Weight Each	
		lbs.	(kg)
<b>SB860FSFB</b>	11U Finger Kit	0.9	(0.4)

## Enhanced Vertical Cable Manager Kit

Developed to provide enhanced vertical cable management, these new cable manager kits have been designed specifically to complement the 29½" (749mm) V-Line enclosure platform. The 2¾" (70mm) wide units can be fitted on the left hand and right hand side of the cabinets with the mounting rails positioned centrally. The 5½" (140mm) wide units can only be fitted on the left or right to match the optional mounting rail offset configurations.

- Can factory fitted or easily retro-fitted in the field
- Split doors for improved operation and easy removal
- Integral cable tie lances and multiple mounting points for twist and lock cable management arms
- Steel material with UL 94V-0 black plastic components
- Black RAL 9005 epoxy polyester powder coat paint finish

Part Number	Cabinet Unit Height	Cabinet Width in. (mm)	Offset
VVCMC24FB	24U	2¾" (70)	Center
VVCMC38FB	38U		
VVCMC42FB	42U		
VVCMC45FB	45U		
VVCMC47FB	47U		
VVCMS24FB	24U	5½" (140)	Offset Left or Right
VVCMS38FB	38U		
VVCMS42FB	42U		
VVCMS45FB	45U		
VVCMS47FB	47U		

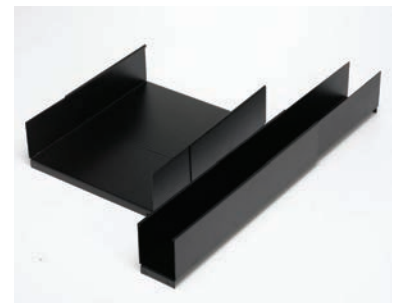


## Horizontal Cable Trough Kit

Designed to span between front and rear mounted enhanced vertical cable managers, these cable troughs simply clip into the rear of the vertical manager in line with the cable pass through.

- Can factory fitted or easily retro-fitted in the field
- Available in two widths
- Available in varying depth ranges
- Black RAL 9005 epoxy polyester powder coat paint finish

Part Number	Mim. Depth Adjustment in. (mm)	Max. Depth Adjustment in. (mm)	To Suit Vertical Manager Configuration in. (mm)
ACCT070400B	10¼" (260)	15⅞" (403)	2.785" (70)
ACCT070590B	14⅜" (365)	23⅜" (594)	2.785" (70)
ACCT070890B	18⅞" (460)	31⅞" (790)	2.785" (70)
VCT5501600B	10¼" (260)	15⅞" (403)	5.5" (140)
VCT5502350B	14⅜" (365)	23⅜" (594)	5.5" (140)
VCT5503525B	18⅞" (460)	31⅞" (790)	5.5" (140)



## Cabinet Ganging Kit

The V-Line™ enclosure frame has been updated to include a simpler ganging facility. Each cabinet frame has knock-outs in the side members, allowing frames to be butted side by side, and simply fastened together. This feature allows the cabinets to be ganged with or without side panels fitted.

- Ganging kits include six (6) bolts and six (6) flange nuts

Part Number
VLGK

