

Seismic Enclosures

Features

- Tested to NEBS Zone 4 via Telecordia GR-63-CORE
- Weight loads up to 1300 lbs. (590 kg)
- Welded 12 gauge steel enclosures
- Range of enclosure sizes offering 38U to 42U of usable space
- 24" and 30" enclosure widths
- Overall heights: 77" and 84"

Primary Markets/Applications:

- Enterprise data centers
- Colocation or web hosting data centers
- Networking room

Seismic enclosures are the solution of choice for installations where shock and vibration are factors. This includes earthquake zones, transportation (railway and shipboard) and high vibration environments such as power plants and airports. Seismic enclosures protect your electronics by providing enhanced frame strength and rigidity.



EATON

Powering Business Worldwide

What is Seismic?

Seismic products are performance tested according to Telcordia (formerly Bellcore) GR-63-CORE Network Equipment Building System (NEBS™) requirements for physical protection. A Telcordia GR-63-CORE compliant test must be conducted by a Nationally Recognized Testing Laboratory (NRTL) or other recognized independent laboratory before certification will be issued. This test is conducted on an installation-specific basis with customer-installed equipment and cabling mounted inside.

Testing

Eaton has tested specific seismic configurations under weight loading and equipment loading conditions. The testing verified the enclosure performance up to NEBS Zone 4 for weight load up to 1300 lbs. (590 kg). During testing, the enclosures showed no deformations to the frame or any load bearing elements. A detailed test report is available on our web site at Eaton.com/paramount. Click on to the Documentation Tab to locate the report.

Different enclosure applications will likely require additional seismic testing to ensure performance based on the specific equipment loading and weights.

There are many factors which impact the ability of an enclosure and equipment mounted internally to withstand the shock and vibration conditions typical of seismic applications. These include:

- Weight of the equipment loaded into the enclosure
- Center of gravity of the enclosure with the equipment loaded
- Attachment/anchoring
- Height and width of the enclosure
- Level of seismic activity

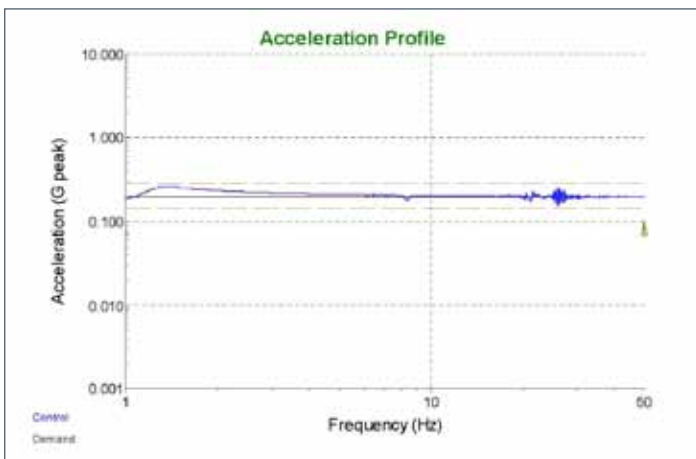
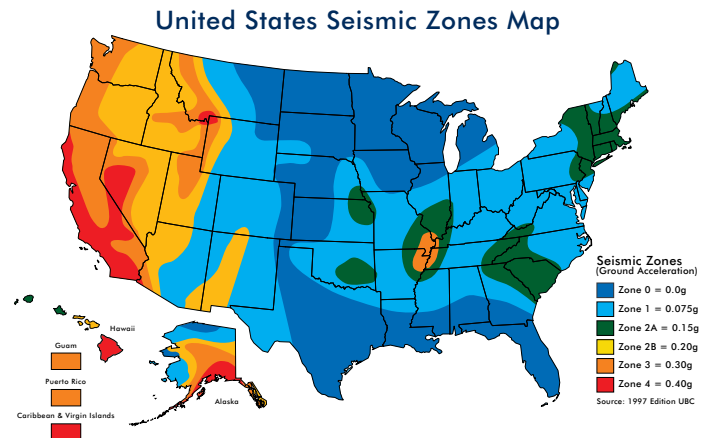
Design

The enclosure performance may change once equipment is installed - depending on the weight, positioning and attachment features. These changes may or may not affect the seismic stability of the enclosure.

Eaton's application engineering specialists will work with you to configure a solution which best meets your application requirements. From FEA (Finite Element Analysis) through testing – we will partner with you to create a solution which meets your seismic requirements.

Seismic Zones

Seismic enclosure standards are often specified in terms of the earthquake risk zones. As shown in the seismic map, zones vary from 0 to 4 – with the zone 0 designating no substantial risk. Zones 3 and 4 are generally viewed as regions where Seismic enclosures are needed.



Enclosure Acceleration Profile

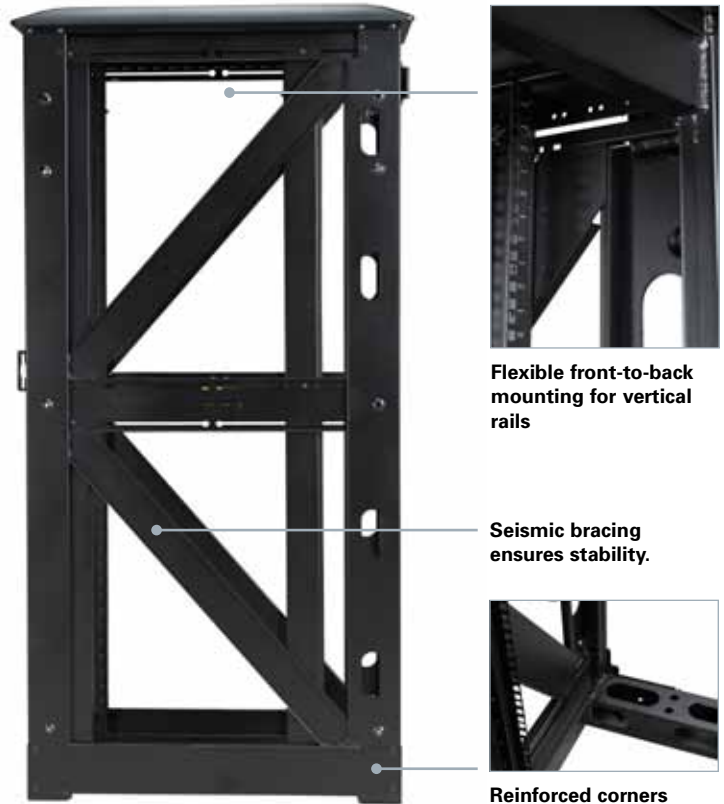


Enclosure seismic testing

Key Design Elements

Product Details

- Tested to Telecordia GR-63-Core seismic requirements up to 1,300 lbs. (590 kg)
- 12 gauge steel construction
- Available in 77" (38U usable vertical space) and 84" (42U usable vertical space) heights, 24" and 30" widths and 34.5" and 40" frame depths
- NEBS rated doors with Dirak swing handle three-point latching system, available in Black or NuGrey
- Dirak swing handle is the NEBS approved lock for this enclosure
- Standard Titanium insert panels are used with the NEBS door frames
- Mechanically fastened NEBS rated side panels available in Black or NuGrey
- Frame is configured with standard Paramount top panel offerings
- Seismic mounting washers included with the frame



Accessories



Lacing bars are provided for power and cable management mounting.



Paramount's frame design efficiently accommodates large quantities of cables.



Vertical 19" EIA Rails



Full range of Eaton ePDUs



Blanking panels provide a quick, easy and cost effective solution to optimize air circulation within an enclosure.



Cable rings allow for vertical cable management and can accommodate up to 129 CAT 5 cables.



Take-up spools help manage excess network or power cables with integrated bend radius support.



Strain relief bars provide a solution for cables in patch cable racks.

Paramount Seismic Enclosures and Accessories

Enclosures

PARAMOUNT NEBS FRAMES

Item Number	Size	Description
JW772434Z4	38U x 24"W x 34.5"D	Welded Seismic Paramount Frame
JW772440Z4	38U x 24"W x 40"D	Welded Seismic Paramount Frame
JW773034Z4	38U x 30"W x 34.5"D	Welded Seismic Paramount Frame
JW773040Z4	38U x 30"W x 40"D	Welded Seismic Paramount Frame
JW842434Z4	42U x 24"W x 34.5"D	Welded Seismic Paramount Frame
JW842440Z4	42U x 24"W x 40"D	Welded Seismic Paramount Frame
JW843034Z4	42U x 30"W x 34.5"D	Welded Seismic Paramount Frame
JW843040Z4	42U x 30"W x 40"D	Welded Seismic Paramount Frame

Note: U Height is 'usable rack mounting space'

PARAMOUNT NEBS SIDE PANELS

Item Number	Size	Description
JSPS7734Z4	38U x 34"D	Solid Side Panel - Seismic
JSPS7740Z4	38U x 40"D	Solid Side Panel - Seismic
JSPS8434Z4	42U x 34"D	Solid Side Panel - Seismic
JSPS8440Z4	42U x 40"D	Solid Side Panel - Seismic

PARAMOUNT NEBS TRIM KITS

Item Number	Size	Description
JFTK24Z4	24"	Seismic Paramount Frame Trim Kit
JFTK30Z4	30"	Seismic Paramount Frame Trim Kit

PARAMOUNT RAILS

Item Number	Size	Description
JRM10000	44U	Four Rail Kit - .375" Square Holes (for use in JW84 frames)
JRM10003	40U	Four Rail Kit - .375" Square Holes (for use in JW77 frames)

Accessories

STEEL BLANKING PANELS (Mechanically fastened)

Item Number	Height	Quantity
V319F01U10BLK	1U	10
V319F01UBLK	1U	50
V319F01U100BLK	1U	100
V319F02U10BLK	2U	10
V319F02U100BLK	2U	100
V319F05U10BLK	5U	10
V319F05U100BLK	5U	100

TAKE-UP SPOOL

Item Number	Height	Depth	Quantity
CMDRNR031U	1U	3.25" (83mm)	4
CMDRNR032U	2U	3.25" (83mm)	4

PARAMOUNT NEBS DOORS (FULL DOORS ONLY)

Item Number	Size	Description
JDF7724Z4L	77"H x 24"W	Seismic Door Frame - Left Hinged
JDF7724Z4R	77"H x 24"W	Seismic Door Frame - Right Hinged
JDF8424Z4L	84"H x 24"W	Seismic Door Frame - Left Hinged
JDF8424Z4R	84"H x 24"W	Seismic Door Frame - Right Hinged
JDF8430Z4L	84"H x 30"W	Seismic Door Frame - Left Hinged
JDF8430Z4R	84"H x 30"W	Seismic Door Frame - Right Hinged

PARAMOUNT TOP PANELS

Item Number	Size	Description
JTPS2434	24" x 34.5"D	Solid Top Cover
JTPS2440	24" x 40"D	Solid Top Cover
JTPS3034	30" x 34.5"D	Solid Top Cover
JTPS3040	30" x 40"D	Solid Top Cover
JTP10000	24" x 34.5"D	Networking Top Cover - Solid with Side Cutouts
JTP10001	24" x 40"D	Networking Top Cover - Solid with Side Cutouts
JTTPNW2434	24" x 34.5"D	Networking Top Cover - Perfed with Side Cutouts
JTTPNW2440	24" x 40"D	Networking Top Cover - Perfed with Side Cutouts
JTTPNW3024	30" x 34.5"D	Networking Top Cover - Perfed with Side Cutouts
JTTPNW3040	30" x 40"D	Networking Top Cover - Perfed with Side Cutouts

PARAMOUNT NEBS DIVIDER PANELS

Item Number	Size	Description
JVD7734SZ4	38U x 34.5"	Vertical Cab. Divider - Solid, Seismic
JVD7740SZ4	38U x 40"	Vertical Cab. Divider - Solid, Seismic
JVD8434SZ4	42U x 34.5"	Vertical Cab. Divider - Solid, Seismic
JVD8440SZ4	42U x 40"	Vertical Cab. Divider - Solid, Seismic

CABLE STRAIN RELIEF BARS

Item Number	Height	Depth	Quantity
CMRB19022U	2U	2" (51mm)	1
CMRB19042U	2U	4" (102mm)	1
CMRB19062U	2U	6" (152mm)	1
CMRB19082U	2U	8" (203mm)	1

1U/2U CABLE RING KIT

Item Number	Depth	Diameter	Quantity
CMTUNR02	2.5" (64mm)	2.0" (51mm)	1
CMTUNR05	5.0" (127mm)	2.0" (51mm)	1

Notes:

- 1) Seismic enclosures cannot be used with casters
- 2) Door handle options limited to Dirak Swing Handle
- 3) Utilize vertical lacing bars for equipment mounting and cable management
- 4) For additional enclosure accessories, visit Eaton.com/paramount

Eaton
Electrical Sector
1111 Superior Avenue
Cleveland, OH 44114 USA
Eaton.com

© 2013 Eaton
All Rights Reserved
Printed in USA
BR159001EN
May 2013



To contact an Eaton salesperson or local distributor, please visit Eaton.com/wrightline or call 800-225-7348