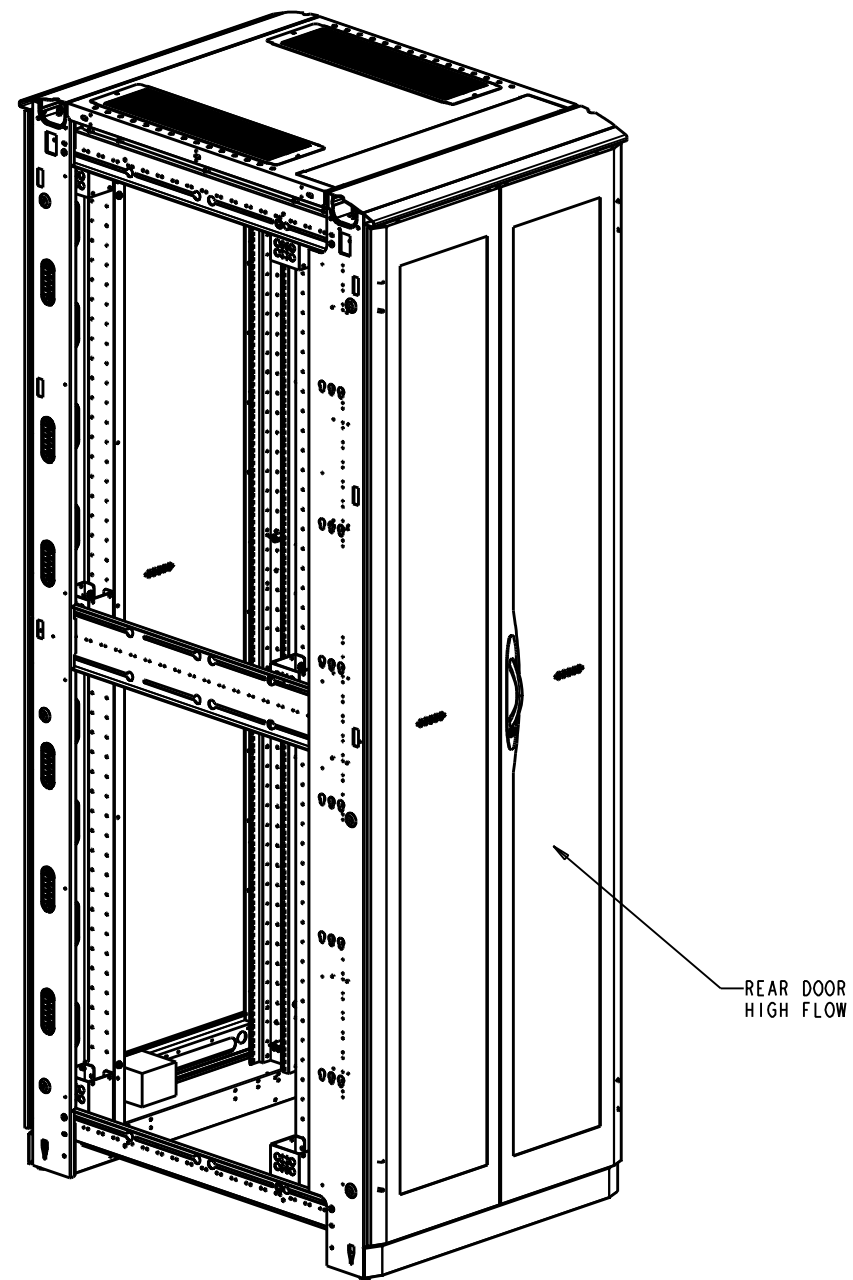


FRONT ISO



REAR ISO

SHIPPING WEIGHT: 510 LBS

REV	REV. DATE	REV'D BY	CURRENT REVISION DESCRIPTION	ECN OR EPR NUMBER
-	11/28/11	MQuaglia	PRODUCTION RELEASE	EPR113387

THIS DRAWING CONTAINS PROPRIETARY INFORMATION AND IS LOANED SUBJECT TO RETURN UPON DEMAND AND UPON THE EXPRESS CONDITION THAT IT WILL NOT BE USED IN ANY WAY DETRIMENTAL TO THE INTEREST OF EATON CORPORATION

DRAWN IN THIRD ANGLE PROJECTION

TOLERANCE UNLESS SPEC'D
 .XX ± .02
 .XXX ± .005
 < ± .1"

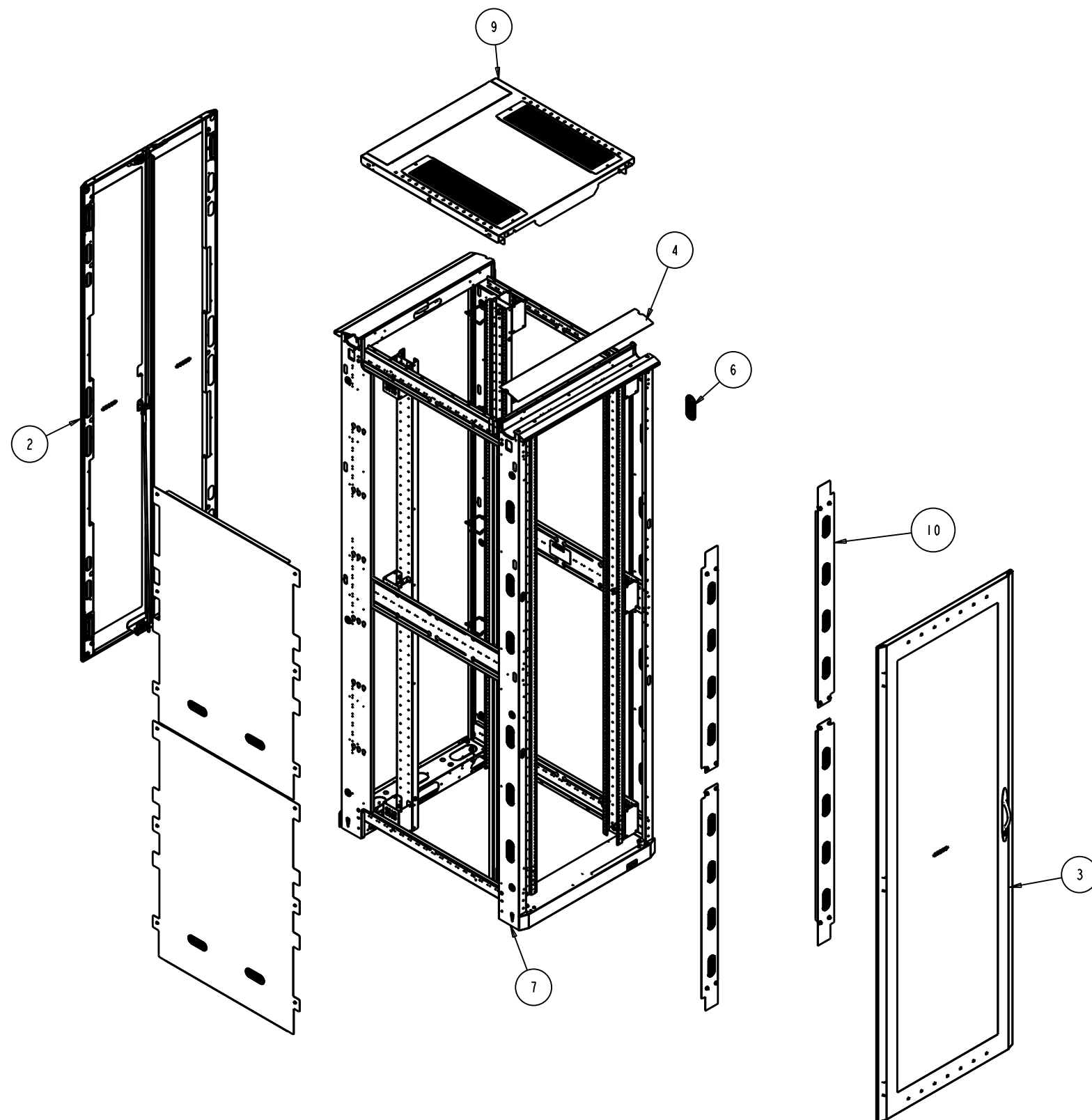
ALL DIMENSIONS IN INCHES

CAGE NUMBER:	81824	CUSTOMER:	EATON DIR FLD SALES
DES. BY:	MQuaglia	DES. DATE:	11/28/11
DRWN. BY:	MQuaglia	DRWN. DATE:	11/28/11
DESIGN MGMT SITE:	Worcester	PROD. GRP:	50 - Paramount
		COLOR:	-
		CRS GA:	N/A
		OTHER:	-
MATERIAL:			
MATERIAL FINISH:			
SPEC #:			



PMOUNT CONFIG 51U X 30W X 42D
 RACK HYGIENE, 2 EPDU, HCS TOP

SHEET:	1 OF 8	REV DATE:	11/28/11
D	PMT513042HCSTPL	REV	-



ASSEMBLY WIRING NOTE:

- GROUND ALL DOORS, RAILS, TOP AND DIVIDER PANELS. USE GROUNDING LANYARDS FROM KIT P/N GRNDPMT. USE STANDARD W/L GROUND POINTS FOR ATTACHMENT AREAS.

ITEM	TYPE	DOCUMENT #	REV	DESCRIPTION	QTY
11	SA	GRNDPMT	-	GROUND KIT - PARAMOUNT	1
10	MA	PMTVDP5130	-	VERTICAL BLANKING PANELS	1
9	MA	PMTNWP3042HCS	A	HCS TOP PANEL - 30W X 42D, DBL	1
8	MA	PMTJVD5142S	-	DIVIDER PANEL ASY - 51U X 42D	1
7	MA	PMTFRM513040	-	WLD - FRAME, 51U X 30W X 40D	1
6	MA	JWOVLGROM	A	GROMMET - OVAL 1.5WX4L	12
5	MA	JRR51CMSQ	A	RM REDUCER RAILS - 51U,	1
4	MA	JFTK30_	B	FRAME TRIM KIT - 30"W	1
3	MA	JDHF9630L	-	DOOR, HIGH FLOW	1
2	MA	JDDHF9630	-	ASSEMBLY - SPLIT DOOR, HIGH FLOW	1
1	MA	CMDRNR032U_	-	D-RING KIT, 2U	1
				DESCRIPTION	QTY

THIS DRAWING CONTAINS PROPRIETARY INFORMATION AND IS LOANED SUBJECT TO RETURN UPON DEMAND AND UPON THE EXPRESS CONDITION THAT IT WILL NOT BE USED IN ANY WAY DETRIMENTAL TO THE INTEREST OF EATON CORPORATION

DRAWN IN THIRD ANGLE PROJECTION

TOLERANCE UNLESS SPEC'D
 .XX ± .02
 .XXX ± .005
 < ± 1"

ALL DIMENSIONS IN INCHES

CAGE NUMBER: 81824

CUSTOMER: EATON DIR FLD SALES

DES. BY: MQuaglia 11/28/11

DRWN. BY: MQuaglia 11/28/11

DESIGN MGMT SITE: Worcester

PROD. GRP: 50 - Paramount

COLOR: -

MATERIAL: -

MATERIAL FINISH: -

SPEC #: -

EATON

PMOUNT CONFIG 51U X 30W X 42D
 RACK HYGIENE, 2 EPDU, HCS TOP

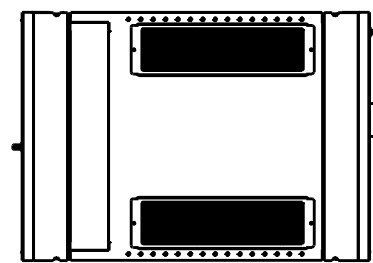
SHEET: 2 OF 8

REV DATE: 11/28/11

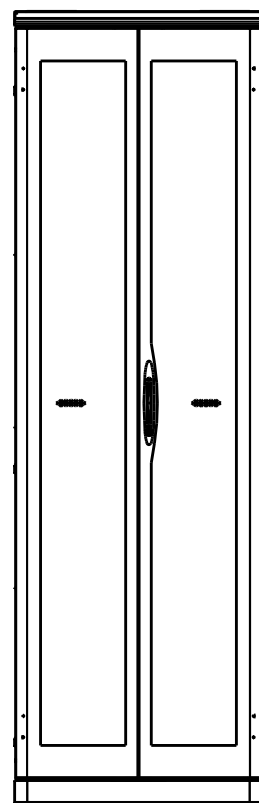
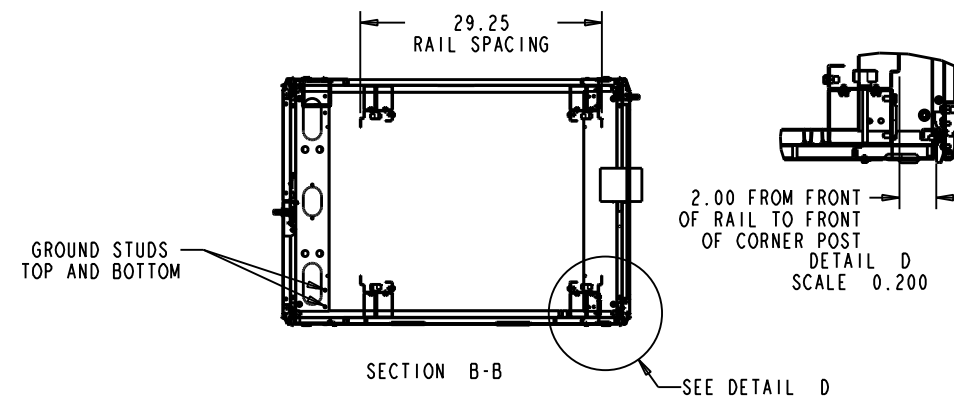
D PMT513042HCSTPL REV -

REV	REV. DATE	REV'D BY	CURRENT REVISION DESCRIPTION	ECN OR EPR NUMBER
-	11/28/11	MQuaglia	PRODUCTION RELEASE	EPRI13387

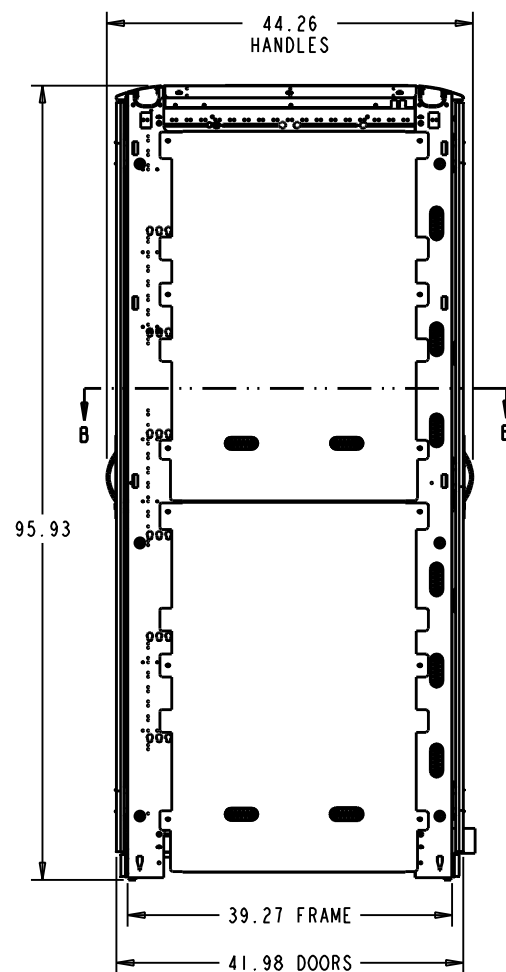
RELEASE STATUS
Production



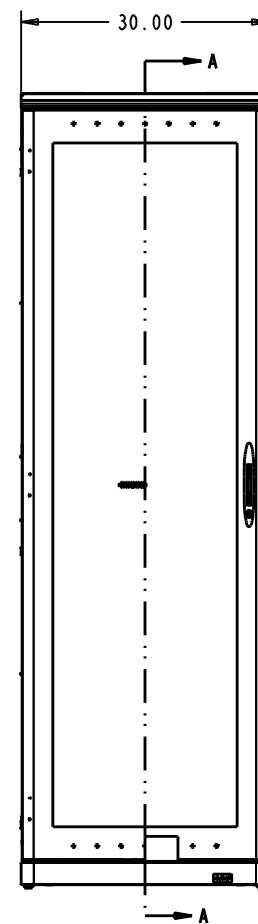
TOP



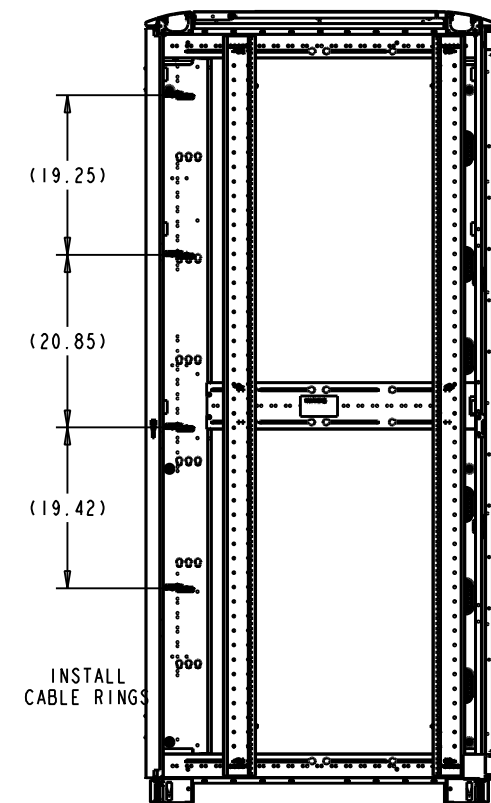
REAR



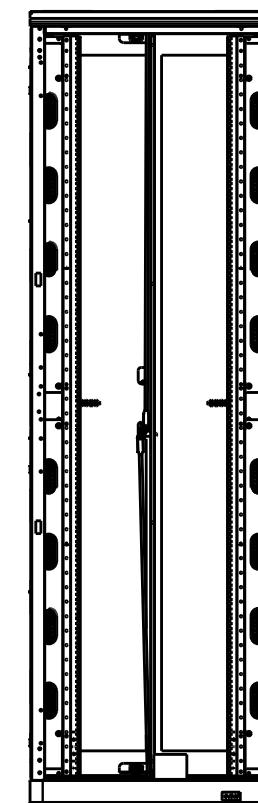
LEFT SIDE



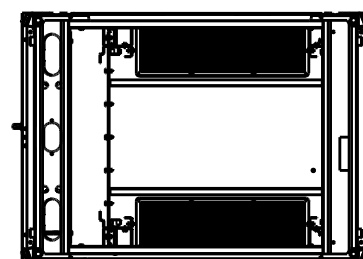
FRONT



SECTION A-A



INSTALL BLANKING
PANELS AS SHOWN



BOTTOM

LEVELING FEET

<small>THIS DRAWING CONTAINS PROPRIETARY INFORMATION AND IS LOANED SUBJECT TO RETURN UPON DEMAND AND UPON THE EXPRESS CONDITION THAT IT WILL NOT BE USED IN ANY WAY DETRIMENTAL TO THE INTEREST OF EATON CORPORATION</small>	CAGE NUMBER:	CUSTOMER: EATON DIR FLD SALES	
	81824	DES. BY MQuaglia 11/28/11	
	DESIGN MGMT SITE:	DRWN. BY MQuaglia 11/28/11	
	Worcester	PROD. GRP 50 - Paramount	
<small>DRAWN IN THIRD ANGLE PROJECTION</small> 	TOLERANCE UNLESS SPEC'D .XX ± .02 .XXX ± .005 < ± .1 <small>ALL DIMENSIONS IN INCHES</small>	COLOR: -	PMOUNT CONFIG 51U X 30W X 42D RACK HYGIENE, 2 EPDU, HCS TOP
MATERIAL:	CRS GA: N/A	SHEET: 3 OF 8	
MATERIAL FINISH:	OTHER: -	REV DATE: 11/28/11	
	SPEC #:		D PMT513042HCSTPL REV -

-	11/28/11	MQuaglia	PRODUCTION RELEASE	EPR113387
REV	REV. DATE	REV'D BY	CURRENT REVISION DESCRIPTION	ECN OR EPR NUMBER