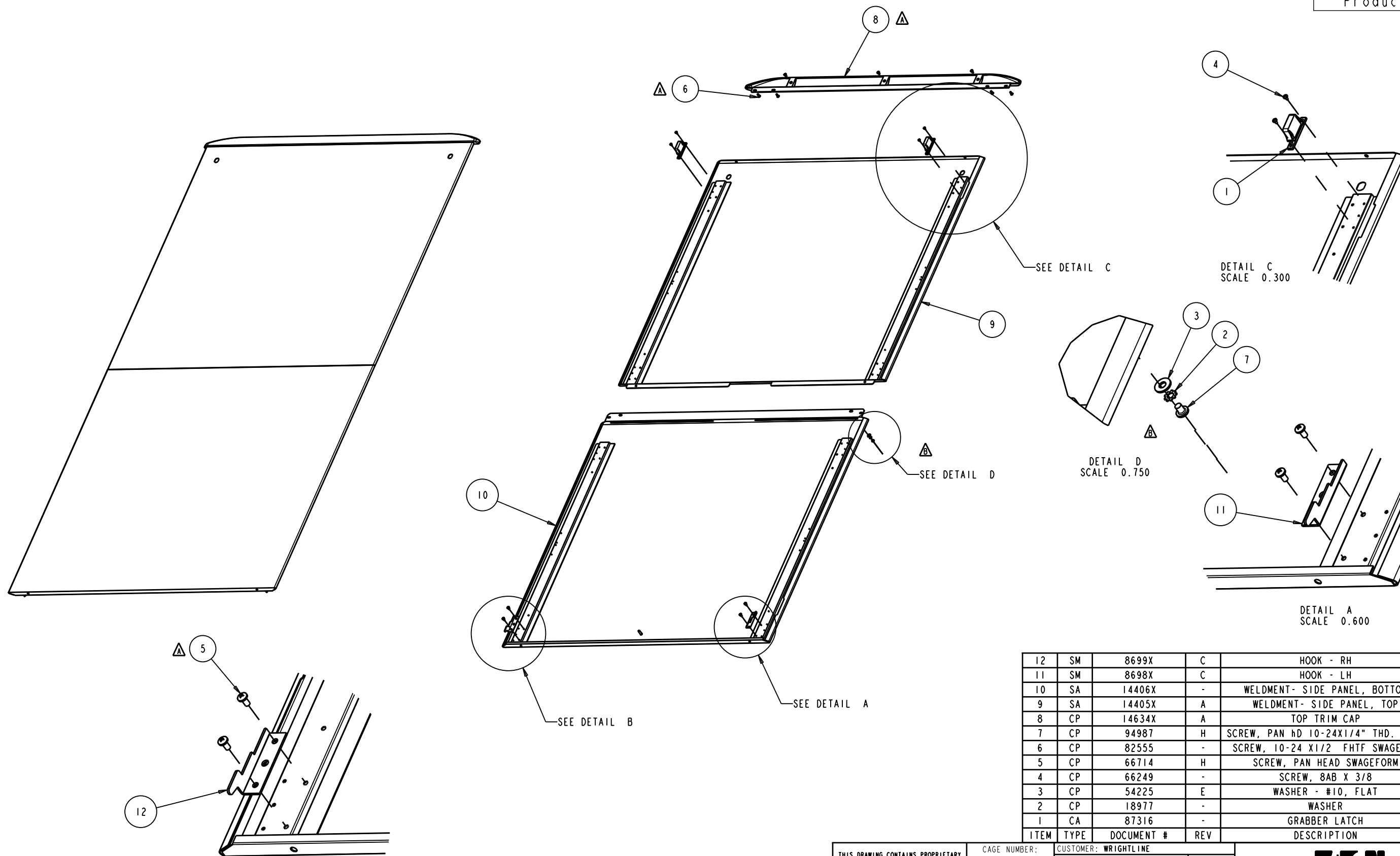


RELEASE STATUS
Production



ITEM	TYPE	DOCUMENT #	REV	DESCRIPTION	QTY
12	SM	8699X	C	HOOK - RH	1
11	SM	8698X	C	HOOK - LH	1
10	SA	14406X	-	WELDMENT- SIDE PANEL, BOTTOM	1
9	SA	14405X	A	WELDMENT- SIDE PANEL, TOP	1
8	CP	14634X	A	TOP TRIM CAP	1
7	CP	94987	H	SCREW, PAN hD 10-24X1/4" THD. FRMG	2
6	CP	82555	-	SCREW, 10-24 X1/2 FHTF SWAGE FM	4
5	CP	66714	H	SCREW, PAN HEAD SWAGEFORM	7
4	CP	66249	-	SCREW, 8AB X 3/8	4
3	CP	54225	E	WASHER - #10, FLAT	2
2	CP	18977	-	WASHER	2
1	CA	87316	-	GRABBER LATCH	2

THIS DRAWING CONTAINS PROPRIETARY INFORMATION AND IS LOANED SUBJECT TO RETURN UPON DEMAND AND UPON THE EXPRESS CONDITION THAT IT WILL NOT BE USED IN ANY WAY DETRIMENTAL TO THE INTEREST OF WRIGHTLINE

CAGE NUMBER: 81824
 CUSTOMER: WRIGHTLINE
 DES. BY: Tellsworth 02/21/06
 DRWN. BY: Tellsworth 02/21/06
 DESIGN MGMT SITE: Worcester
 PROD. GRP: Multiple Association
 COLOR:
 CRS GA: N/A
 OTHER: NOTED
 MATERIAL: Powder Coat - Variable
 MATERIAL FINISH: Wrightline Spec #

DRAWING TITLE: SIDE PANEL, SPLIT
 PARAMOUNT 84H" X 45" D

SHEET: 1 OF 1
 REV DATE: 03/23/10

WRIGHTLINE

REV	REV. DATE	REV'D BY	CURRENT REVISION DESCRIPTION	ECR NUMBER
B	03/23/10	DLucia	ADDED SCREW 94987 (2X), WASHER 54225 (2X) & LCK WASHER 18977 (2X)	777020061