

# Quick Install Guide

Full User Manual and Log Book  
available at: [www.eaton.com/VoCALL5](http://www.eaton.com/VoCALL5)



## Retrofit compatibility

If you are replacing an existing EVCS system with this unit then a test for compatibility must be carried out on the outstations, and any units which do not function as expected must be replaced with new units. This advice also applies to all roaming handsets.

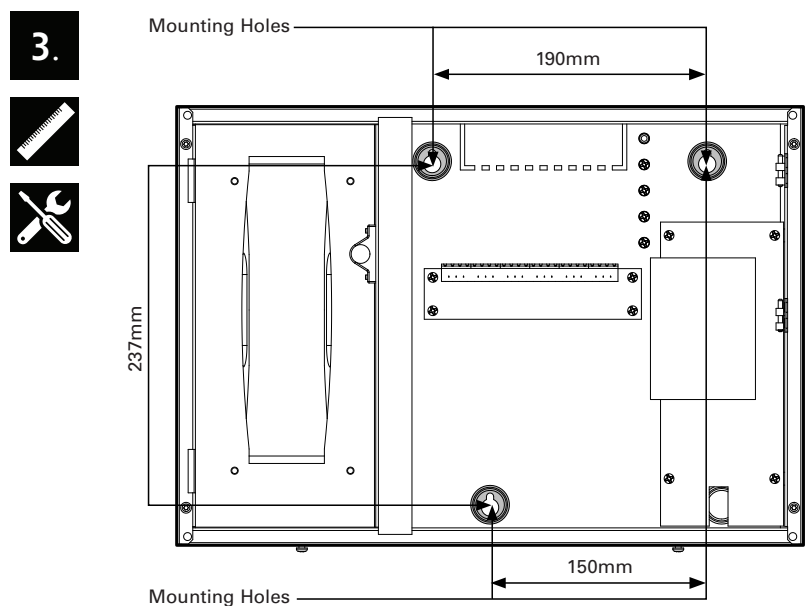
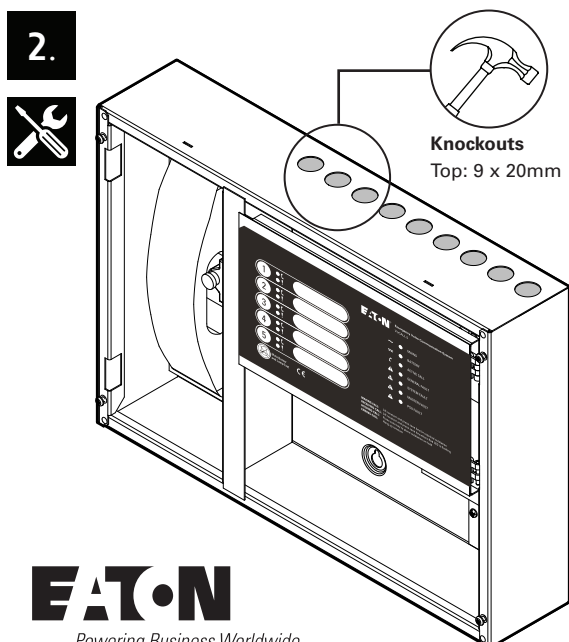
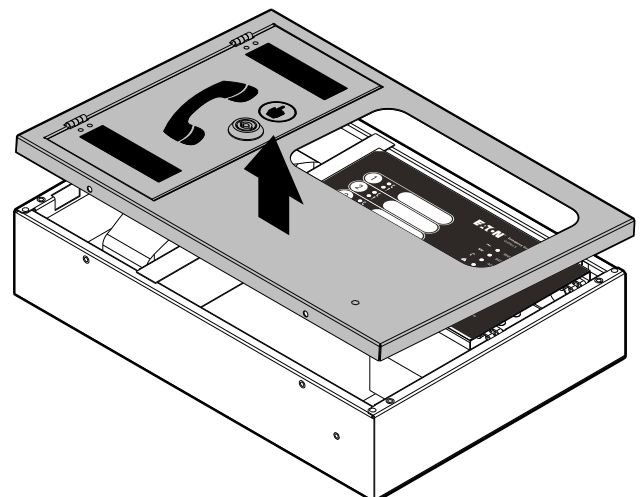
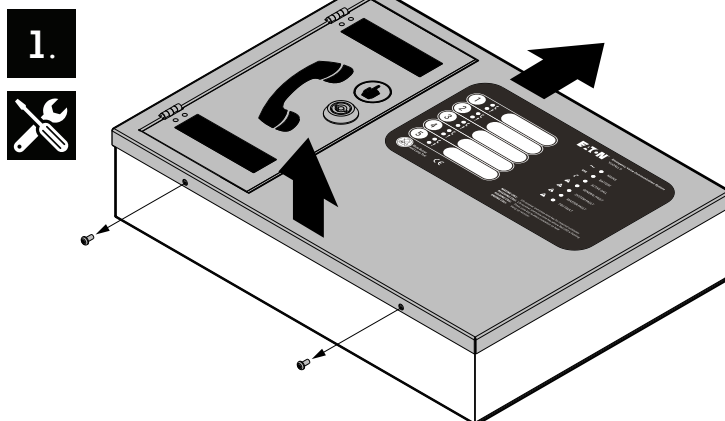
## Installation

1. Using a Phillips head screwdriver, open the front cover by removing the 2 screws along the bottom edge of the panel. Then lift the cover from the bottom edge and push up in order to disengage the latching clips on the top edge.
2. Before mounting the VoCALL 5 on the wall it is advisable to remove the cable knockouts. Unused knockouts must be left unopened to comply with the Low Voltage Directive (LVD), accidentally knocked out holes should be blanked off.
3. Fix the back box to the wall using the measurements provided below. Do not drill through the back box to the wall as this will contaminate the circuitry.

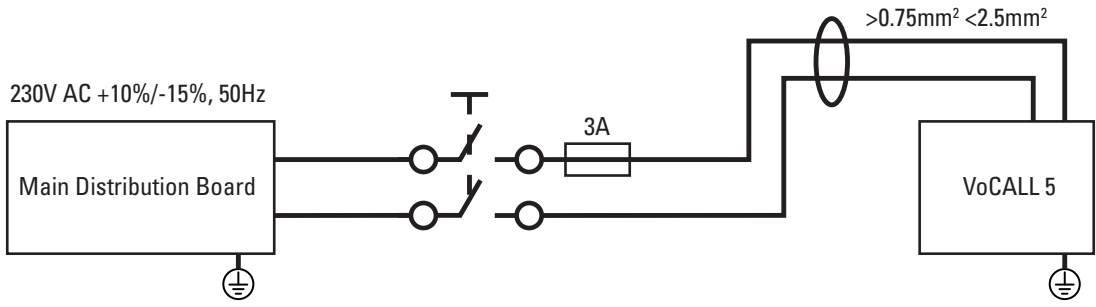
**CAUTION**  
**DO NOT power up the unit on batteries as the power supply has a large reservoir capacitor which may rupture the battery fuse if the AC is not present when powering up the system.**

4. Wire the mains connection according to the diagram overleaf.
5. Wire the outstations according to the diagram overleaf.
6. Finally, wire the batteries according to the diagram overleaf.

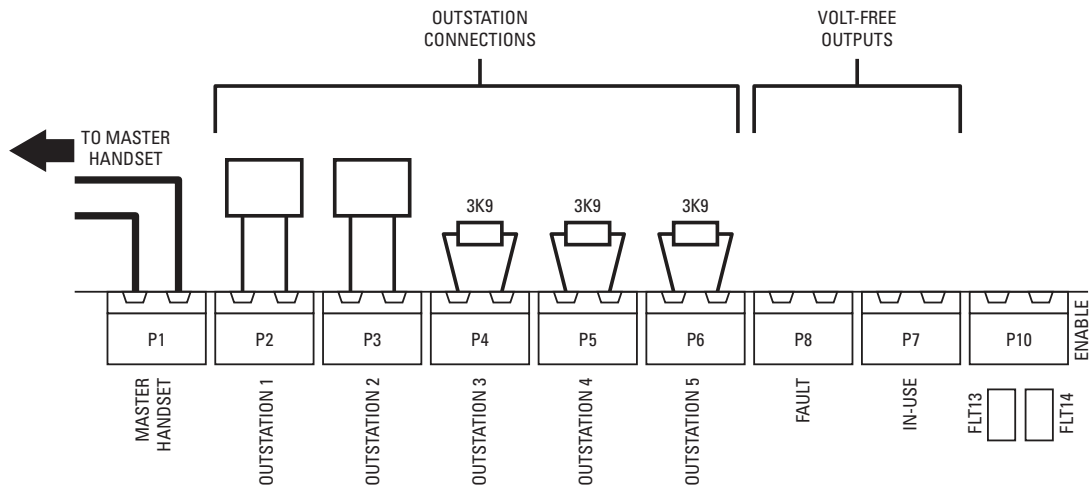
**Note:** The VoCALL 5 is supplied without batteries which should be procured separately and be of adequate capacity to meet local regulations.



4.  
2



5.  
2



6.  
2

