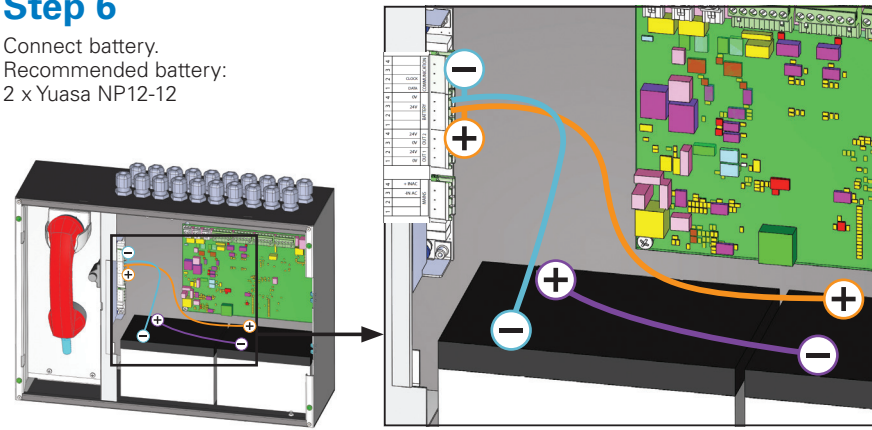


VoCALL 16 Main Panel

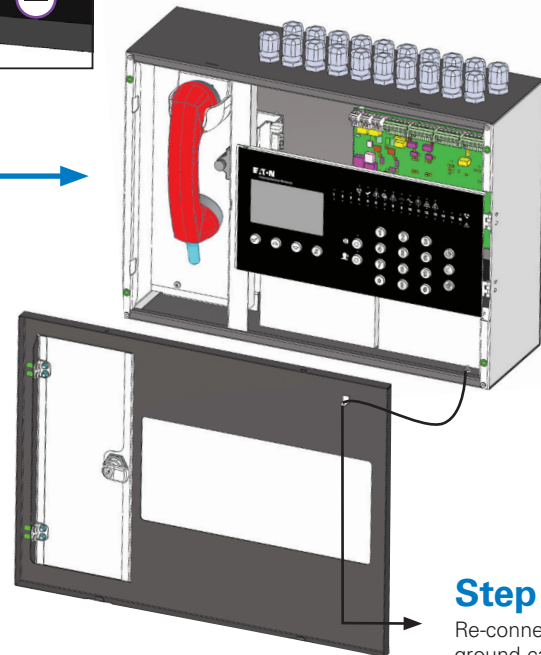
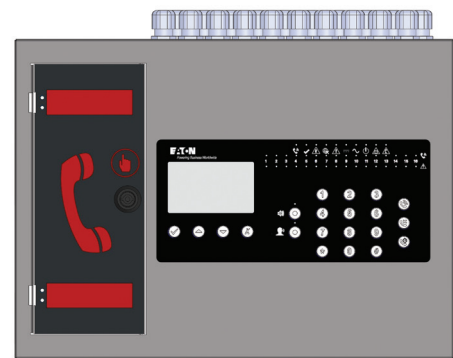
Step 6

Connect battery.
Recommended battery:
2 x Yuasa NP12-12



Step 8

Assemble the unit

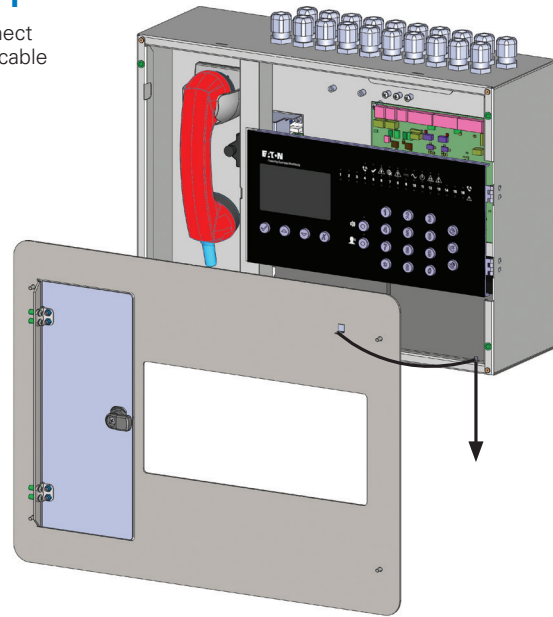


Step 7
Re-connect ground cable

Flush mount process

Step 1

Re-connect ground cable



Step 2
Assemble Screws



Flush Mount Bezel



Product Number	Description
MX16	VoCALL 16 Main Panel
MX16-SSC	VoCALL 16 Main Panel Stainless Front Pack

Finish & Mounting	Gray; Surface, Flush (Stainless Steel)
Cabling	Enhanced FP200 2X2 / 4X1 Core; 1.5 sq mm
Configuration & Distance	Loop Configuration; Maximum distance between two panels- 300 m Maximum distance between two OS - 200 m Maximum distance between panel and OS – 200 m
Dimension	W 488 X H 355 X D 155 mm (Wall – mount) W 522 X H 390 mm (Bezel)
Weight	6.7 Kg – excluding battery
Knockouts	20 x 20 mm dia at top W 114 X H 37 mm at rear

Changes to the products, to the information contained in this document, and to prices are reserved; so are errors and omissions. Only order confirmations and technical documentation by Eaton is binding. Photos and pictures also do not warrant a specific layout or functionality. Their use in whatever form is subject to prior approval by Eaton. The same applies to Trademarks (especially Eaton, Moeller, and Cutler-Hammer). The Terms and Conditions of Eaton apply, as referenced on Eaton Internet pages and Eaton order confirmations.

Manufactured by
Eaton Electrical Systems Limited.
Wheatley Hall Rd Doncaster
South Yorkshire, DN2 4NB
Eaton.uk.com
Tel. +44 (0) 1302 303 350
www.eaton.com
Made in Romania

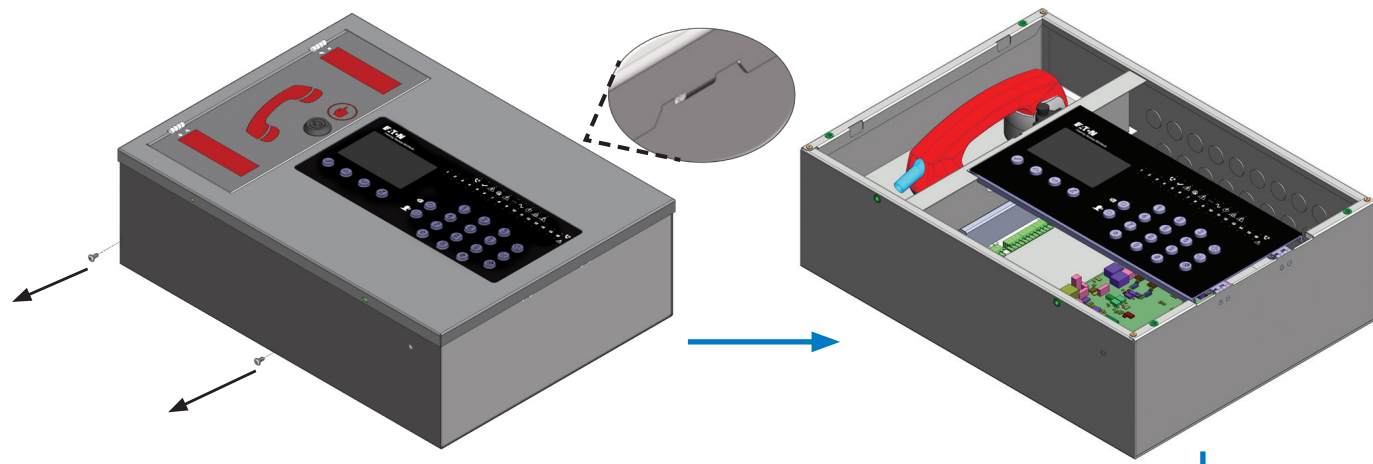
Eaton Industries Manufacturing GmbH
EMEA Headquarters
Route de la Longeraie 7
1110 Morges, Switzerland
Eaton.eu

© 2019 Eaton
All Rights Reserved
Publication No. 25-13905-C
CSSC-1710-4860
November 2019

Eaton is a registered trademark.
All other trademarks are property of their respective owners.

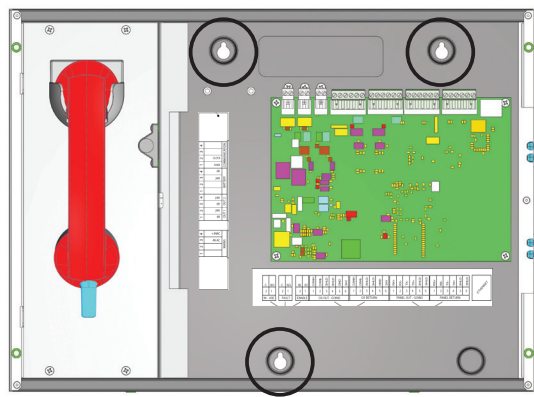
Step 1

Open screws to remove top cover.
Lift up the cover. Push back to open. Disconnect ground cable.



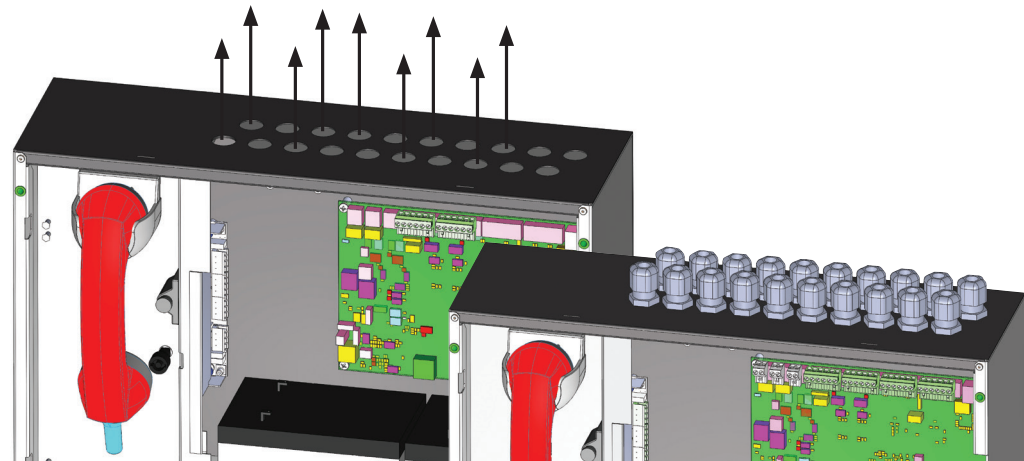
Step 3

Wall Mounting
(User interface has been removed in following images for clarity of instructions. Do not detach the unit)



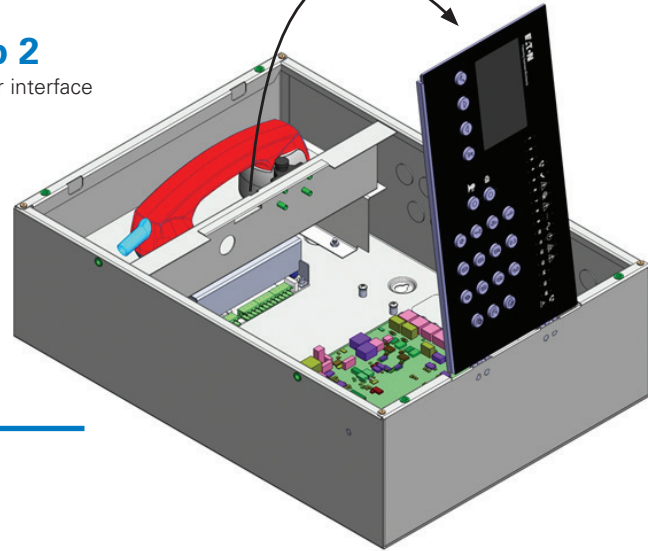
Step 4

Remove Knockouts as required



Step 2

Lift user interface



Step 5

Wiring instructions for panel to panel connections.
For panel to outstation wiring instructions, refer to outstation quick start guide.

