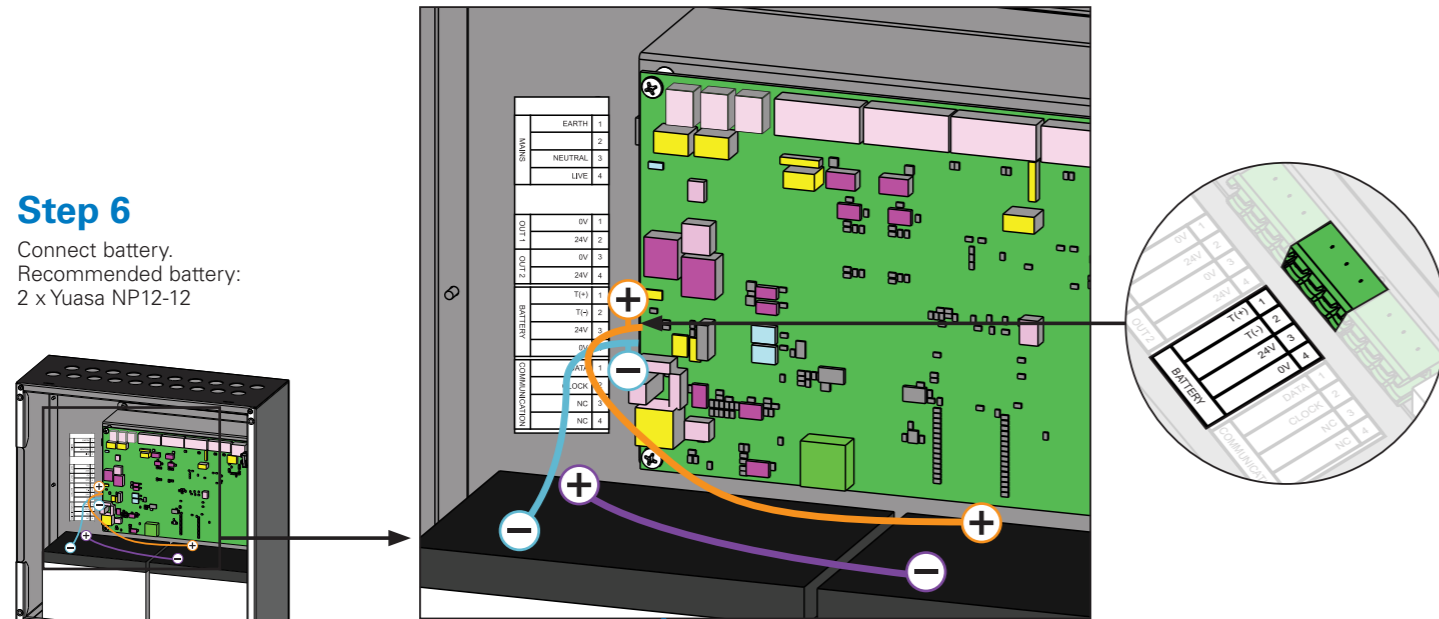


VoCALL 16 Network Panel

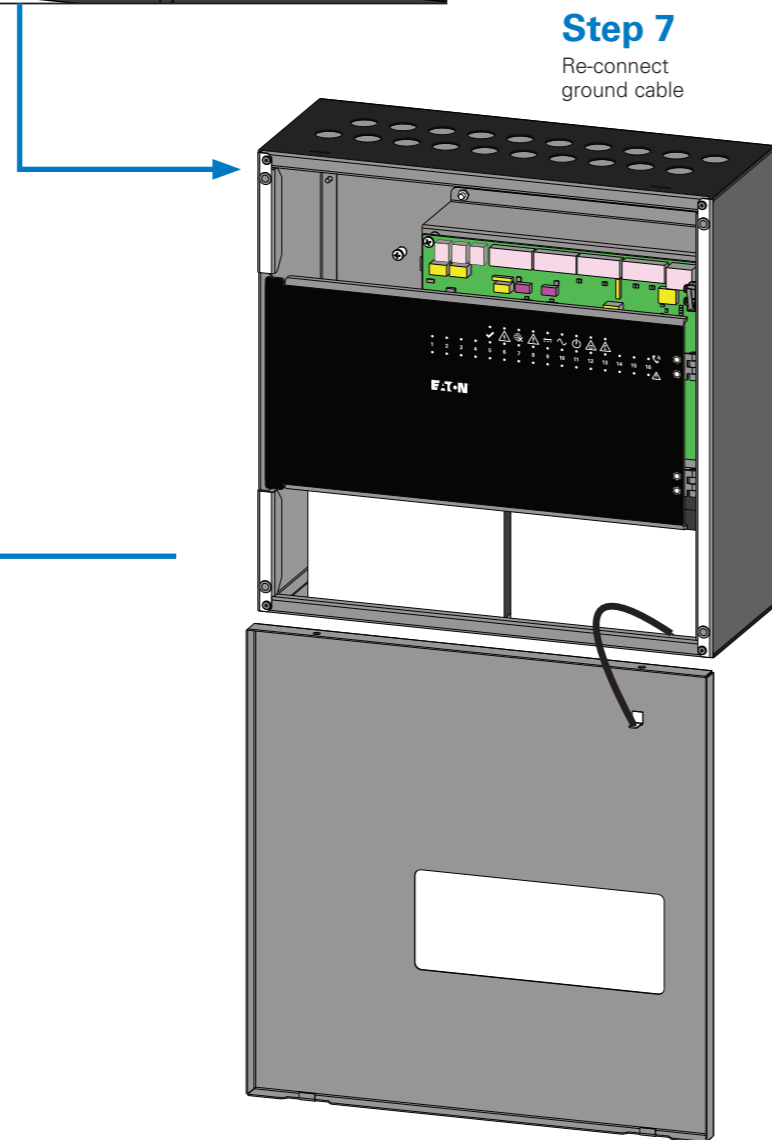
Step 6

Connect battery.
Recommended battery:
2 x Yuasa NP12-12



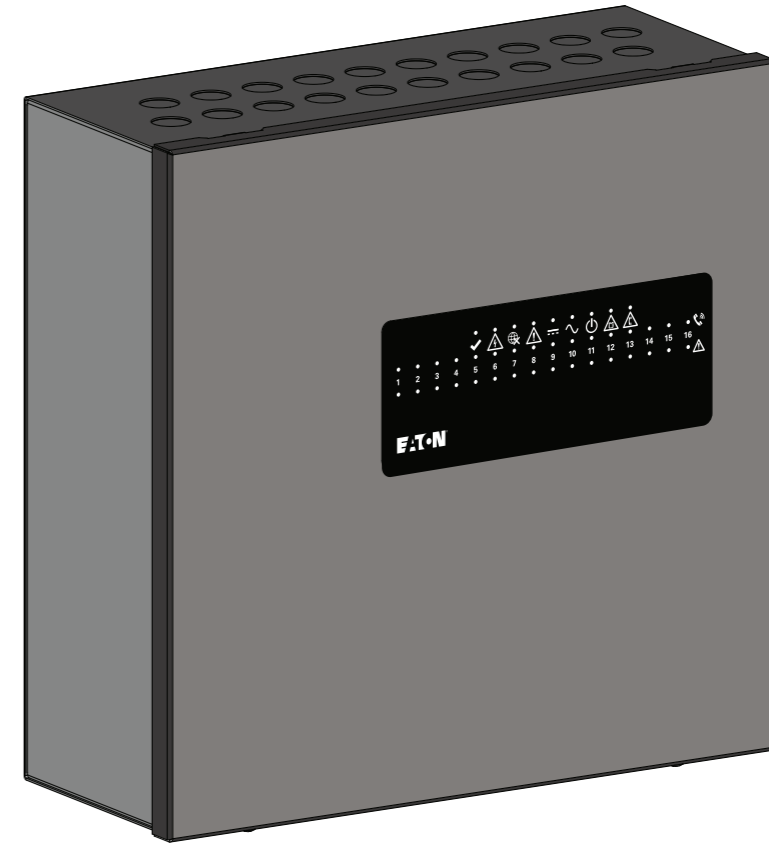
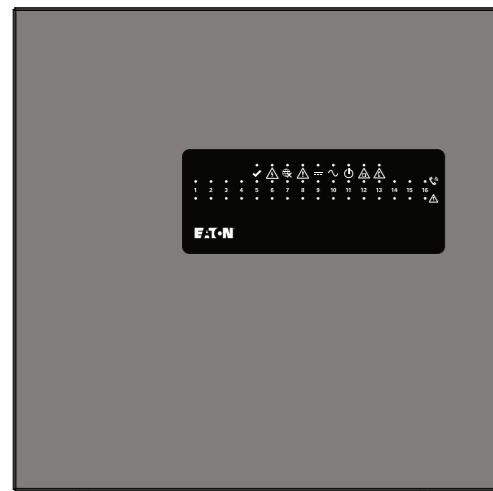
Step 7

Re-connect
ground cable



Step 8

Assemble the unit

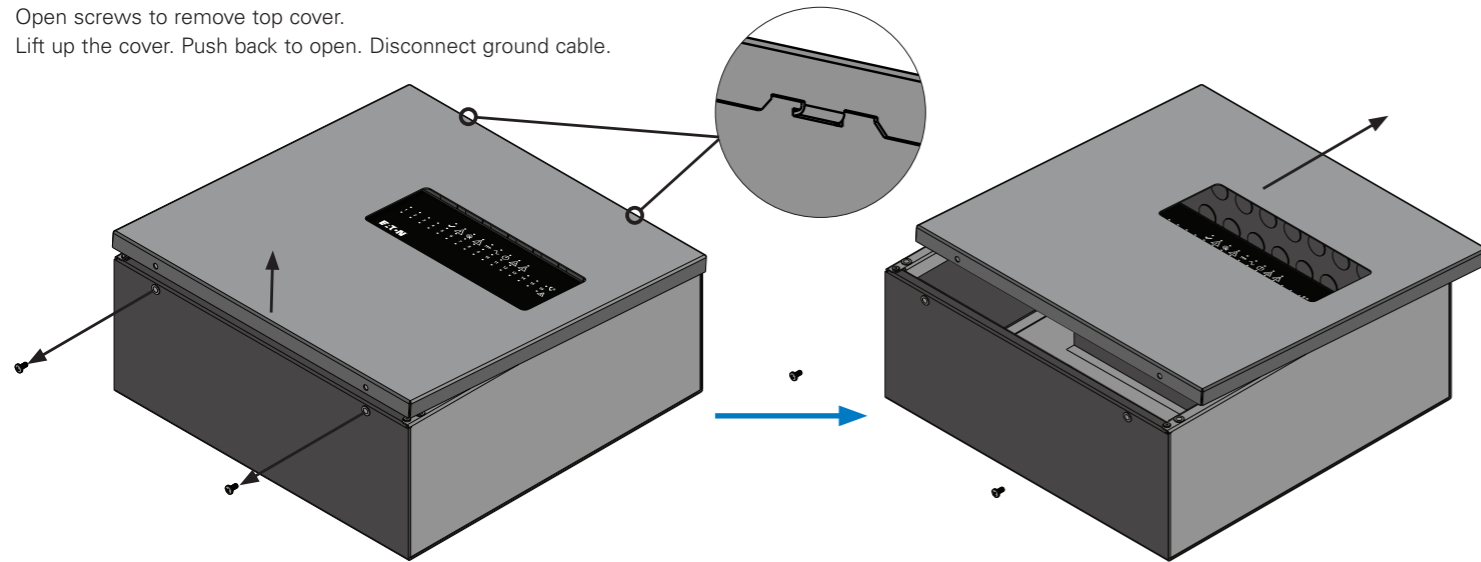


Product Number	Description
NX16	VoCALL 16 Network Panel
Finish & Mounting	Gray; Surface
Cabling	Enhanced FP200 2X2 / 4X1 Core; 1.5 sq mm
Configuration & Distance	Loop Configuration; Maximum distance between two panels- 300 m Maximum distance between two OS - 200 m Maximum distance between panel and OS – 200 m
Dimension	W 354 X H 354 X D 140 mm (Wall – mount)
Weight	5 Kg – excluding battery
Knockouts	20 x 20 mm dia at top W 114 X H 37 mm at rear

Changes to the products, to the information contained in this document, and to prices are reserved; so are errors and omissions. Only order confirmations and technical documentation by Eaton is binding. Photos and pictures also do not warrant a specific layout or functionality. Their use in whatever form is subject to prior approval by Eaton. The same applies to Trademarks (especially Eaton, Moeller, and Cutler-Hammer). The Terms and Conditions of Eaton apply, as referenced on Eaton Internet pages and Eaton order confirmations.

Step 1

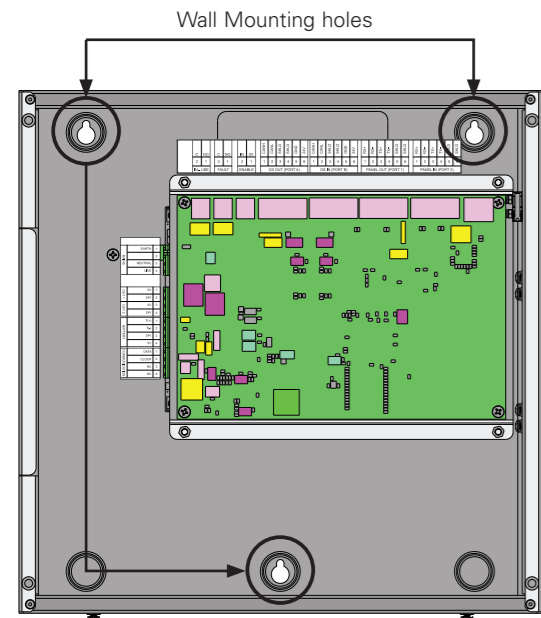
Open screws to remove top cover.
Lift up the cover. Push back to open. Disconnect ground cable.



Step 3

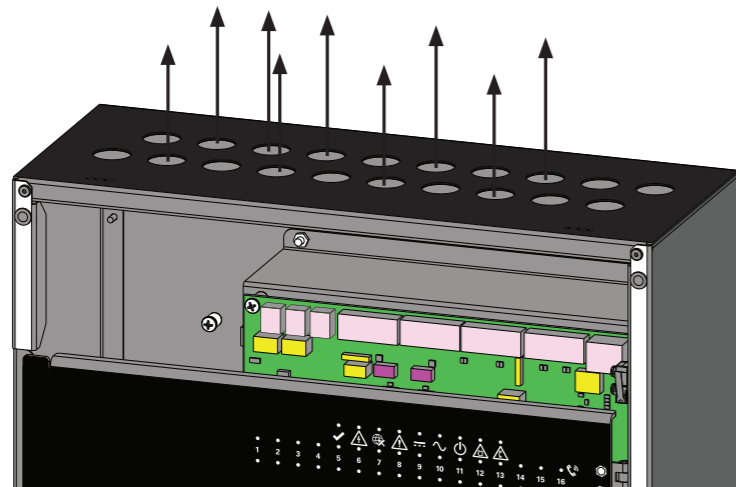
Wall Mounting

(User interface has been removed in following images for clarity of instructions. **Do not detach the unit**)



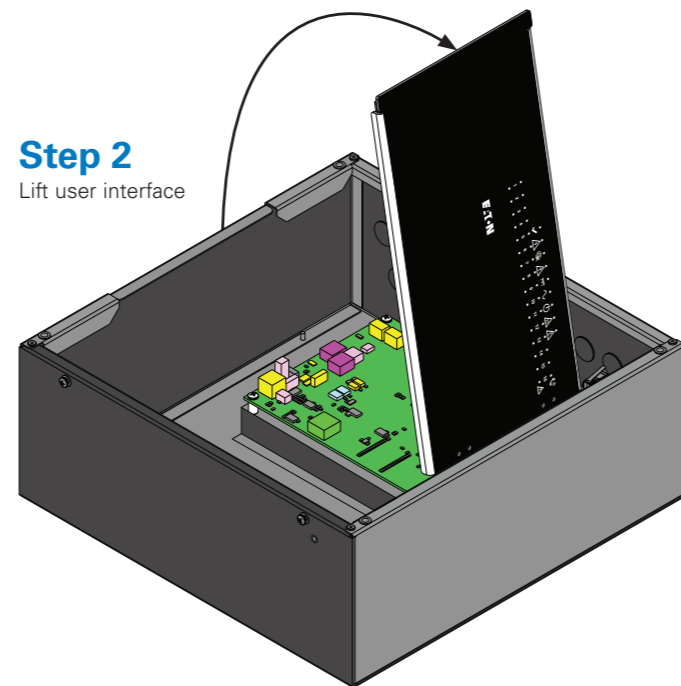
Step 4

Remove Knockouts as required



Step 2

Lift user interface



Step 5

Wiring instructions for panel to panel connections.
For panel to outstation wiring instructions, refer to outstation quick start guide.

