

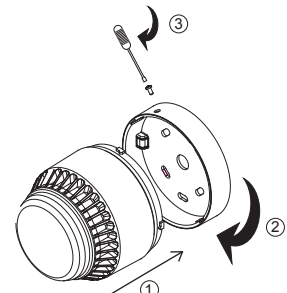
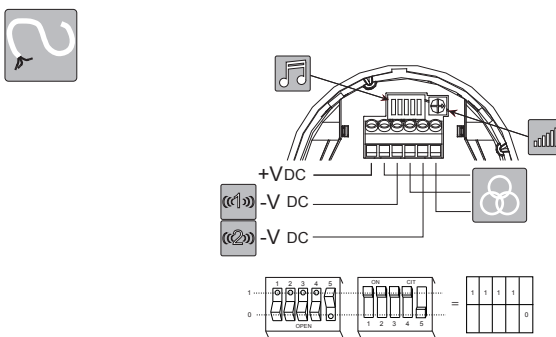
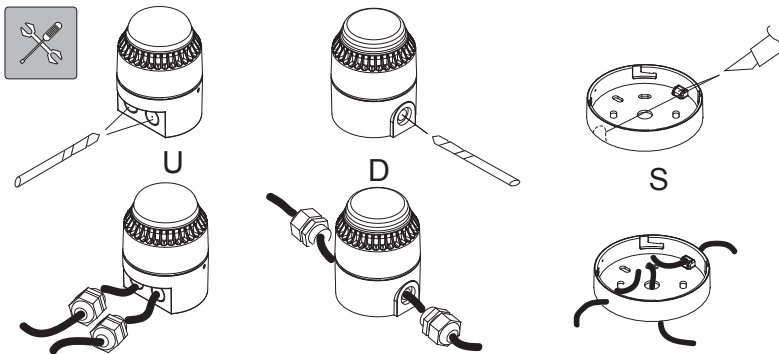
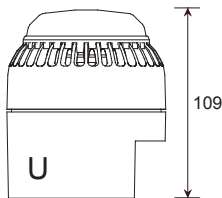
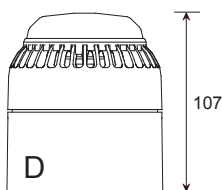
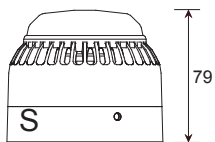
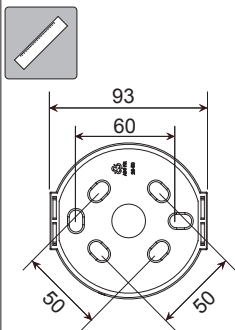
# ROSHNI LP MAXI SOLISTA (ROLPX/SB)



Roshni L P Maxi Solista (ROLPX/SB) : (18~28V)(Cert Pending)  
 EN54-3 Fire Alarm Device - Sounder  
 Dispositif d'alarme incendie EN54-3 - Avertisseur d'incendie  
 EN54-3 Feueralarmgerät - Töner  
 Dispositivo di allarme antincendio a norma EN54-3 - Sirena  
 EN54-3 Brandalarm - sounder  
 Dispositivo de alarma de incendios EN54-3 - Timbre de alarma  
 EN54-3 Brandvarnare - Signalgivare

24V <sub>nom</sub> (18 ~ 28VDC)	9 ~ 28V DC
45 mA max	
0.28mm <sup>2</sup> ~ 2.5mm <sup>2</sup>	
10°C ~ +55°C	
ABS V0	
Type A = S Type B = D/U	IP54 = S IP66 = D/U
6	32

Product exceeds minimum requirements of EN54-3  
 See [www.fulleon.com](http://www.fulleon.com)  
 Le produit dépasse les exigences minimum de EN54-3  
 Voir [www.fulleon.com](http://www.fulleon.com)  
 Das Erzeugnis erfüllt die Mindestanforderungen von EN54-3.  
 Siehe [www.fulleon.com](http://www.fulleon.com)  
 Il prodotto supera i requisiti minimi previsti dalla norma EN54-3  
 Vedi [www.fulleon.com](http://www.fulleon.com)  
 Product overtreft de minimale vereisten van EN54-3.  
 Zie [www.fulleon.com](http://www.fulleon.com)  
 El producto excede los requisitos mínimos de la norma EN54-3  
 Véase [www.fulleon.com](http://www.fulleon.com)  
 Produkten överträffar minsta krav enligt EN54-3  
 Se [www.fulleon.com](http://www.fulleon.com)



								@20°C		
								mA	dB(A)	EN54-3 Min SPL @ 24Vdc @ Max Volume @ Loudest node dB(A)
1	14	11111		800 & 970Hz	2Hz (250ms~250ms)	BS Fire Tone	17	100	*	
2	14	11110		800 ~ 970Hz	7Hz (7/s)	BS Fire Tone	16	101	*	
3	14	11101		800 ~ 970Hz	1Hz (1/s)	BS Fire Tone	43	106	95	
4	14	11100		2850Hz	Steady		40	106	*	
5	4	11011		2400 ~ 2850Hz	7Hz		41	110	*	
6	4	11010		2400 ~ 2850Hz	1Hz		45	111	*	
7	14	11001		500 ~ 1200Hz	3.5s Sweep, 0.5s silence, then repeat	Dutch Fire Tone	38	106	97	
8	14	11000		1200 ~ 500Hz	1Hz	Din Tone	23	101	94	
9	4	10111		2400 & 2850Hz	2Hz (250ms~250ms)		41	106	*	
10	14	10110		970Hz	0.5Hz (1s On / 1s Off)		17	100	*	
11	14	10101		800 & 970Hz	1Hz (500ms~500ms)	BS Fire Tone	17	100	*	
12	4	10100		2850Hz	0.5Hz (1s On / 1s Off)		40	106	*	
13	14	10011		970Hz	0.8Hz (250ms On / 1s Off)		17	99	*	
14	14	10010		970Hz	Steady	BS Fire Tone	39	103	95	
15	14	10001		554 & 440Hz	100ms ~ 400ms	French Fire Tone	20	101	*	
16	16	10000		660Hz	3.3Hz (150ms On / 150ms Off)	Swedish Fire Tone	12	99	*	
17	17	01111		660Hz	0.28Hz (1.8s On / 1.8s Off)	Swedish Fire Tone	14	100	*	
18	18	01110		660Hz	0.05Hz (13s Off / 6.5Hz On)	Swedish Fire Tone	14	100	*	
19	19	01101		660Hz	Steady	Swedish Fire Tone	14	100	*	
20	20	01100		554 & 440Hz	0.5Hz (1s On / 1s Off)	Swedish Fire Tone	20	101	*	
21	21	01011		660Hz	1Hz (500ms ~ 500ms)	Swedish Fire Tone	14	100	*	
22	14	01010		2850Hz	4Hz (150ms On / 100ms Off)	Pelican Crossing	32	104	*	
23	14	01001		800 ~ 970Hz	50Hz	BS Fire Tone	16	100	*	
24	4	01000		2400 ~ 2850Hz	50Hz		40	109	*	
25	25	00111		970Hz	3 x 500ms pulses followed by 1.5s silence then repeat	ISO 8201	23	103	*	
26	26	00110		800 ~ 970Hz	3 x 500ms pulsed sweep followed by 1.5s silence then repeat	ISO 8201	23	105	*	
27	27	00101		970 & 800Hz	3 x 500ms pulsed two tone followed by 1.5s silence then repeat	ISO 8201	18	103	*	
28	10	00100		800 & 970Hz	2Hz (250ms ~ 250ms)	BS Fire Tone	16	100	*	
29	988Hz	00011		990 & 650Hz	2Hz (250ms ~ 250ms) (Symphoni Tones)	BS Fire Tone	23	103	96	
30	510Hz	00010		510 & 610Hz	2Hz (250ms ~ 250ms) (Squashni Micro Tones)	BS Fire Tone	23	100	92	
31	14	00001		300 ~ 1200Hz	1Hz		35	102	*	
32	510Hz	00000		510 & 610Hz	1Hz (500ms ~ 500ms)		20	100	*	

- (i) Tones certified under the CPD (Fire Alarm Applications) are shown in the column marked EN54-3
- (ii) All other SPL measurements are taken 'on axis' & are not third party verified.
- (iii) Detailed EN54-3 polar SPL measurements are available in M96-024
- (i) Les tons certifiés dans le cadre de la DPC (application alarme incendie) sont indiqués dans la colonne intitulée EN54-3.
- (ii) Toutes les autres mesures NPA sont relevées « sur axe » et ne sont pas vérifiées par un tiers.
- (iii) Les mesures NPA polaires détaillées EN54-3 sont disponibles dans M96-024
- (i) Die nach CPD (Feuermelderanwendung) zertifizierten Töne sind in Spalte EN54-3.
- (ii) Alle anderen Schalldruckmessungen wurden vom akustischen Mittelpunkt ab gelesen und von keiner unabhängigen Stelle verifiziert.
- (iii) Detaillierte Polar-SPL-Messungen gemäß EN54-3 sind erhältlich in M96-024
- (i) I toni della sirena certificati CPD (applicazione allarme antincendio) sono indicate nella colonna contrassegnata con EN54-3.
- (ii) Tutte le altre misurazioni SPL sono state rilevate "sull'asse" e non sono state verificate da terzi.
- (iii) Le misurazioni SPL polari ai sensi della norma EN54-3 sono disponibili in M96-024
- (i) U vindtönen die onder CPD (brandalarmtoepassing) zijn gecertificeerd, in de kolom waar EN54-3 staat vermeld.
- (ii) Alle andere SPL-afmetingen zijn via de 'as' gedaan en niet door derden geverifieerd.
- (iii) Uitgebreide polaire SPL-afmetingen voor EN54-3 zijn beschikbaar in M96-024

- (i) Los sonidos certificados por el CPD (aplicación para alarmas de incendios) se muestran en la columna marcada con EN54-3.
- (ii) Cualquier otra medida del SPL (nivel de intensidad acústica) se toma "sobre el eje" y no está verificada por terceras partes.
- (iii) Las medidas detalladas del SPL polar EN54-3 están disponibles en M96-024
- (i) Signaler som är certifierade för CPD (brandvarnare) visas i kolumnen märkt EN54-3.
- (ii) Alla övriga mätningar av ljudtrycket har genomförts "direkt intill" och är inte bekräftade av tredje part.
- (iii) Detaljerade polära mätningar av ljudtrycket enligt EN54-3 finns under M96-024

CE marking under the CPD was affixed on: (see batch code on product)  
 La marque CE dans le cadre de la DPC a été apposée le : (voir code de lot sur le produit)  
 CE-Kennzeichnung unter dem CPD angebracht am: (siehe Chargencode am Erzeugnis).  
 La marcatura CE ai sensi della direttiva CPD è stata apposta su: (vedi codice sul prodotto)  
 CE-markering onder CPD is toegevoegd d.d.: (zie batchcode op het product)  
 CE-märkning enligt CPD fästes på: (se satskod på produkten)