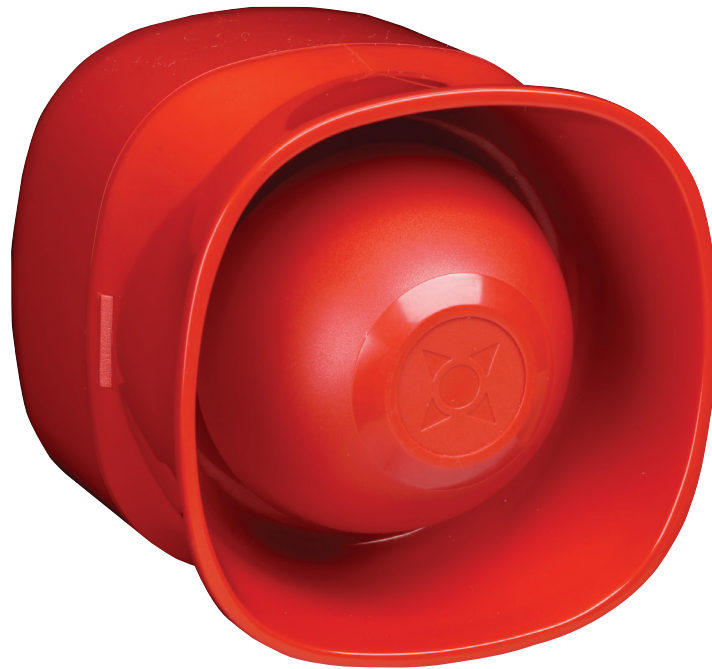


# FX007 - Conventional high output wall sounder



The conventional high output wall sounder (FX007) has a maximum output of 120dB(a) at 1 metre making it ideal for use in areas with high ambient noise levels.

The FX007 is compatible with the Eaton range of conventional fire systems.

This conventional high output wall sounder is simple to install and uses a first fix back plate onto which the main body attaches with a self locking press fix assembly.

## Features and benefits

- High output sounder
- Choice of tones
- Variable volume setting
- Quick and simple to install
- Ideal for areas with high ambient noise

# Specifier's guide

## 4.3 Accessories

### Technical specification

Code	FX007
Description	High output wall sounder
Standards	EN54 Pt3
<b>Specification</b>	
Operating voltage	18V dc to 30V dc
Current consumption	210mA to 260mA
Sound output	120dB(A) (+/- 2) Max at 1 Metre (tone 5) 114dB(A) (+/- 2) Max at 1 Metre (tone 3)
<b>Environmental</b>	
Operating temperature	-25°C to +70°C
Humidity (non condensing)	0 to 93% RH
<b>Physical</b>	
Construction	ABS
Colour	Red
Dimensions (Dia x D)	105mm x 105mm x 95mm
Weight	0.28kg
Ingress protection	IP42
<b>Compatibility</b>	
Suitable for use with	Eaton conventional fire systems

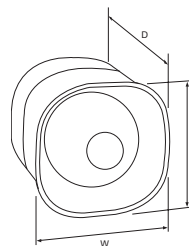
### Installation

1. First fix mounting plate is fixed to wall.
2. Cable entry is from rear, or top/bottom.
3. Connections are to main sounder body.
4. Separate alarm line in and alarm line out terminals are provided.

### Interface options

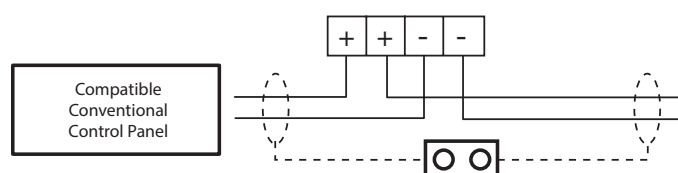
Sounder operates from nominal 24V dc supply and can be connected to any suitably rated conventional sounder circuit.

### Dimensions



H (mm)	W (mm)	D (mm)
105	105	95

### Standard connections



#### WARNING:

Do NOT use high voltage testers if ANY equipment is connected to the system.

Screen (Earth) must be continuous along entire length of cable.

### Catalogue numbers

Description	Code
High output wall sounder	FX007