

Line Terminals Connections

| Max HP | Line Voltage | | | | | Line Lugs (QTY.) & Cable Size per Ø | Service Ground Lugs (QTY.) & Cable Size per Ø |
|--------|--------------|---------|---------|---------|--------------------------|--|--|
| | 200-208 | 220-240 | 380-415 | 440-480 | 575-600 | | |
| 25 | 30 | 40 | 60 | 75 | (1) #14 - 1/0 (CU/AL) | (1) #14 - 2/0 (CU/AL) | |
| 40 | 50 | 75 | 100 | 100 | (1) #4 - 4/0 (CU) | (1) #4 - 350MCM (CU/AL) | |
| 75 | 75 | 150 | 200 | 200 | (1) #3 - 350MCM (CU/AL) | (1) #4 - 350MCM (CU/AL) | |
| 100 | 125 | 200 | 250 | 300 | (2) 3/0 - 350MCM (CU/AL) | (2) 1/0 - 750MCM (CU/AL) | |
| 150 | 200 | 300 | 400 | 500 | (2) 250 - 350MCM (CU/AL) | (2) 1/0 - 750MCM (CU/AL) | |

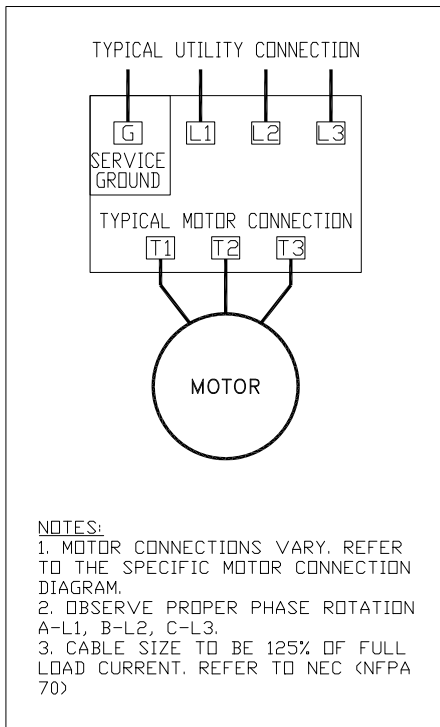
Load Terminals Connections

| Max HP | Line Voltage | | | | | Single Run Cable Sizes | Double Run Cable Sizes |
|--------|--------------|---------|---------|---------|----------------------|------------------------|------------------------|
| | 200-208 | 220-240 | 380-415 | 440-480 | 575-600 | | |
| 10 | 10 | 15 | 20 | 25 | #14 - #8 (CU/AL) | #14 - #8 (CU/AL) | |
| 20 | 25 | 30 | 50 | 60 | #14 - #1 (CU/AL) | #14 - #2 (CU/AL) | |
| 40 | 60 | 75 | 125 | 100 | #8 - 3/0 (CU/AL) | #8 - 2/0 (CU/AL) | |
| 75 | 100 | 150 | 200 | 200 | #2 - 750MCM (CU/AL) | 1/0 - 250MCM (CU/AL) | |
| 150 | 200 | 300 | 400 | 500 | 1/0 - 500MCM (CU/AL) | 1/0 - 500MCM (CU/AL) | |

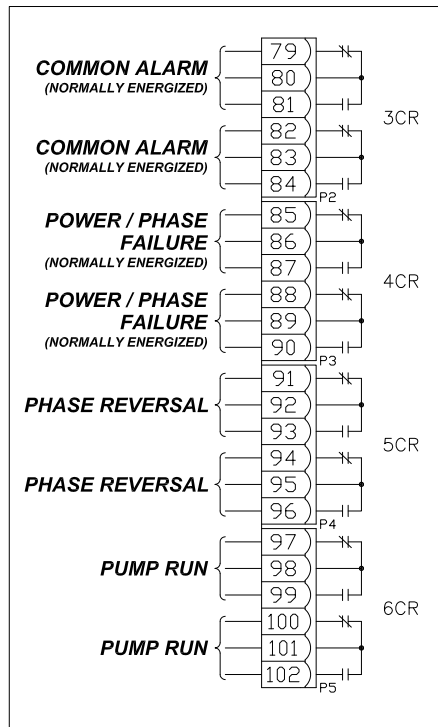
For ambient temperatures exceeding 30C (86F), the temperature rating of motor conductors is recommended to be a minimum of 90C (194F)

For proper cable size, refer to the National Electric Code (NEC - NFPA70)

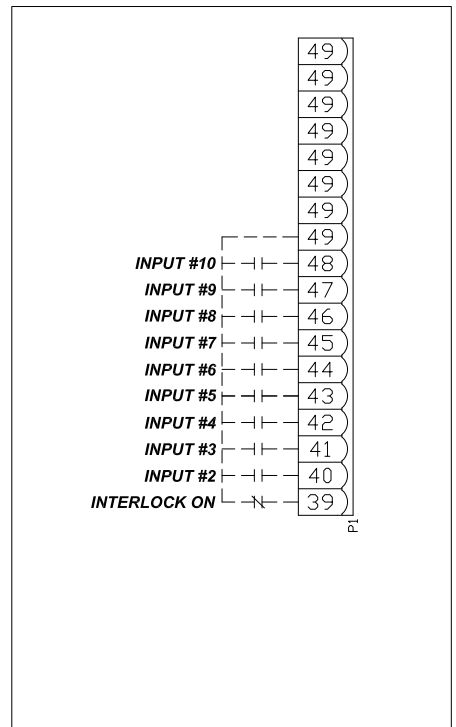
CONTROLLER CONNECTIONS



ALARM CONTACTS



CUSTOMER INPUTS



TRANSFER SWITCH CONNECTIONS (IF EQUIPPED)

