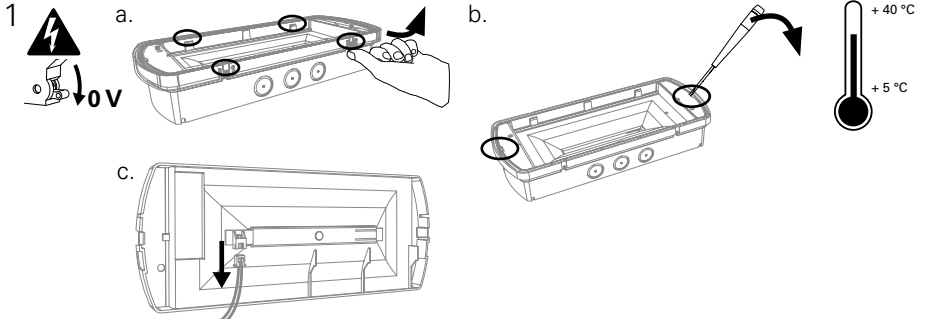
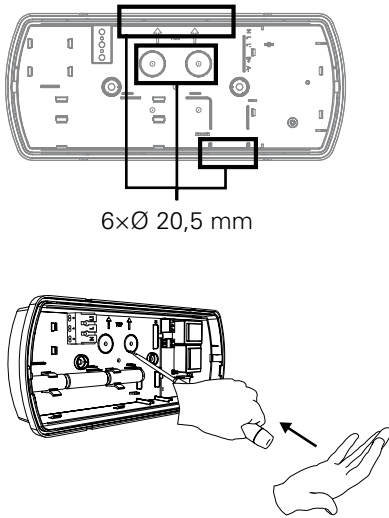


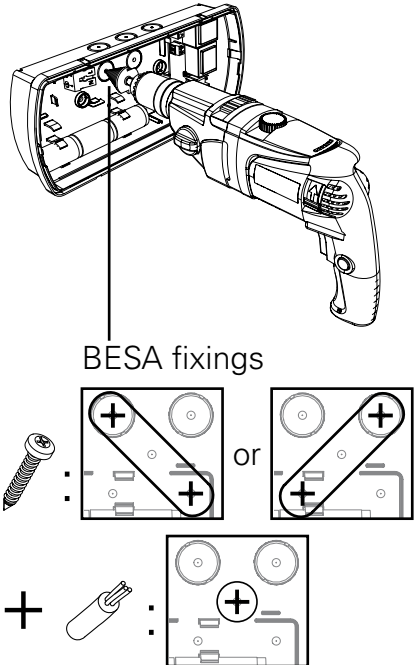
Zeta 4



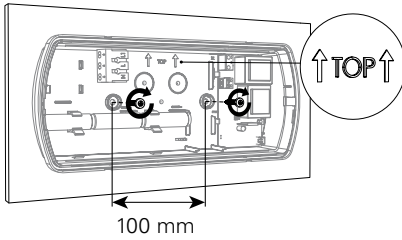
2 Mounting without BESA



Mounting with BESA (not included)



#### 4 Mounting without BESA



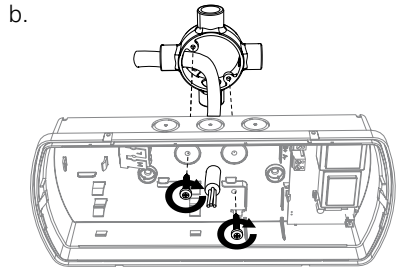
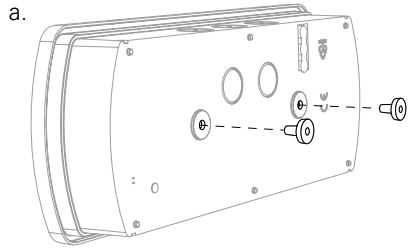
**ZE42ML3**

**IP65** →

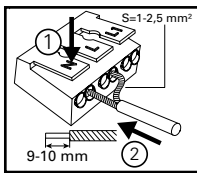
- 1×CAP222045
- 1×CAP222094
- 1×CAP452002

(not included)

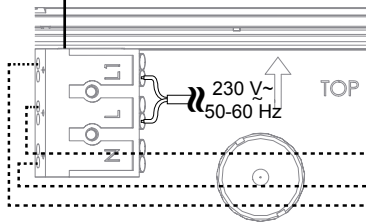
#### Mounting with BESA (not included)



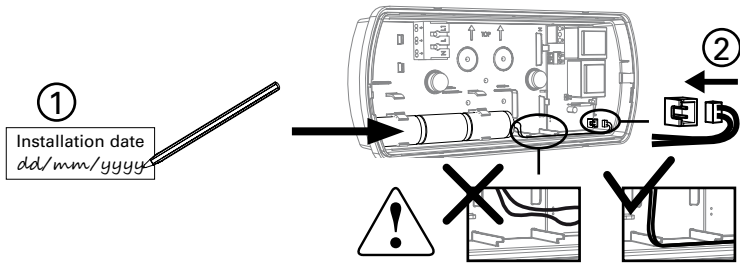
#### 5a.



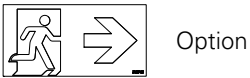
Rigid or flexible wire



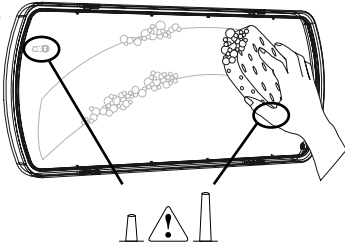
5 b.



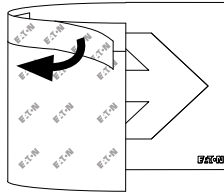
6



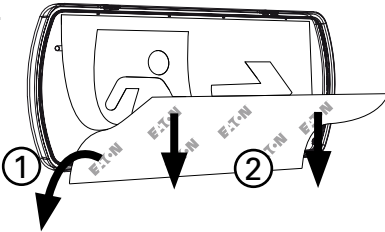
a.



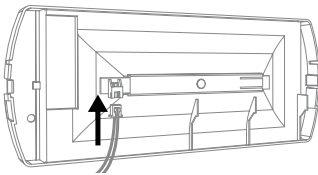
b.



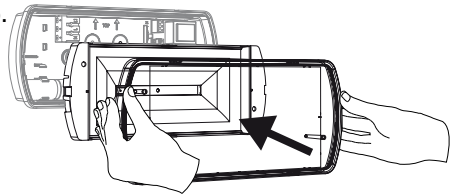
c.



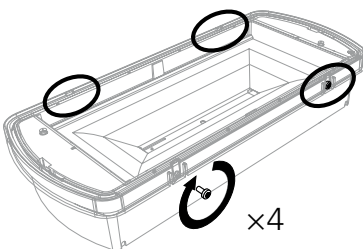
7 a.



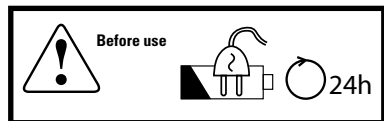
b.



c.

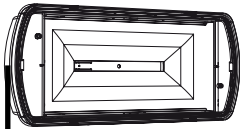


d.



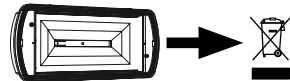


Not replaceable



Non Maintained/  
Maintained

Light output  
Battery duration



**Eaton**  
EMEA Headquarters  
Route de la Longeraie 7  
1110 Morges, Switzerland  
Eaton.eu

ZNO2038600 PrD - 11/2016

© 2016 Eaton  
All Rights Reserved.

Eaton is a registered trademark.

All trademarks are property  
of their respective owners.



**EATON**

Powering Business Worldwide