

Safe Operation

1. Check the rating label for voltage and frequency before connecting this luminaire to the electrical supply.
2. Ensure that the mains supply is switched off when working on this luminaire, whether installing or carrying out any other servicing.
3. To prevent damage to driver, do not mix with conventional magnetic ballasts on the same electrical circuit.
4. Where use in more onerous situations is required, e.g. In part-completed buildings before "drying-out" is completed, or areas where ambient temperatures are outside the normal temperature range, then consult our Sales Office.
5. Ensure the fixing is adequate for the luminaire weight.
6. The change mode of operation from mains to emergency is automatically changed to emergency mode by the integral PCB control gear

Servicing and Disposal

1. At commissioning and handing over of installation ensure that a copy of these instructions is presented to the authority responsible for the operation and maintenance of the luminaries.
2. Servicing, e.g. cleaning, must only be carried out after the electricity supply has been switched off. It must not be assumed that luminaries with lamps not lit are switched off-always check before servicing.
3. Cleaning should be carried out at regular intervals to ensure that dirt does not accumulate to an extent that will impair the thermal safety or optical performance of the luminaire. Regular cleaning will also ensure that the optical performance of the luminaries is maintained.
4. Avoid touching the LED. To clean - Blow surface with either dry air or nitrogen gas.
5. At the end of life the luminaire is classed as WEEE under directive 2002/96/EC and should be disposed of in accordance with local legislation.

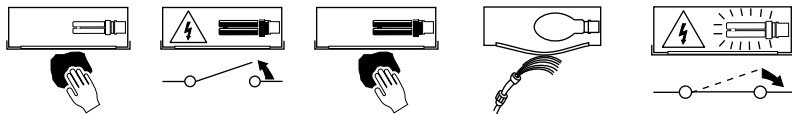
Battery Life

Performance of the luminaire is dependent on the use of the correct type of high temperature Nickel Cadium battery. Battery life may be impaired if the luminaire is mounted in an ambient temperature greater than 25°C. Store the luminaire or battery between 0°C and 25°C. Replace with high temperature Nickel Cadium battery to the manufacturer's recommended part number. Take care not to damage the sleeving. The battery should be replaced when the rated duration is no longer achieved.

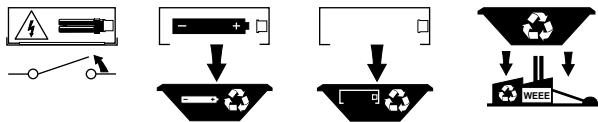
Warning: When disposing of the battery do not pierce, incinerate or short circuit. The battery should be disposed of in accordance with recognised disposal methods.

Note: The LEDs are non-replaceable but the batteries can be replaced by a competent person.

Luminaire Cleaning



End of Life and Components Disposal



Eaton
Wheatley Hall Road, Doncaster, South Yorkshire, DN2 4NB

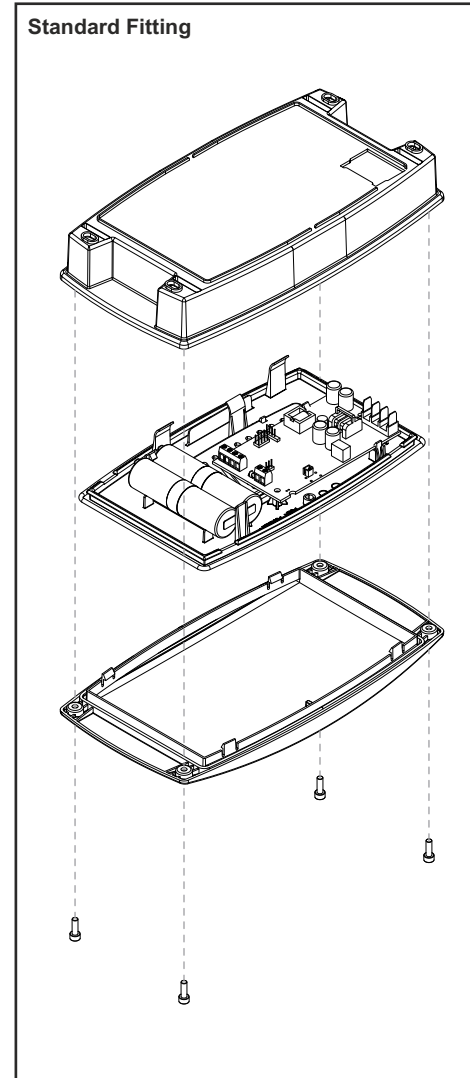
Sales	General	International Sales
T: +44 (0)1302 303303	+44 (0)1302 321541	+44 (0)1302 303250
F: +44 (0)1302 367155	+44 (0)1302 303220	+44 (0)1302 303251
E: sales@cooper-ls.com	technical@cooper-ls.com	export@cooper-ls.com

i-P65

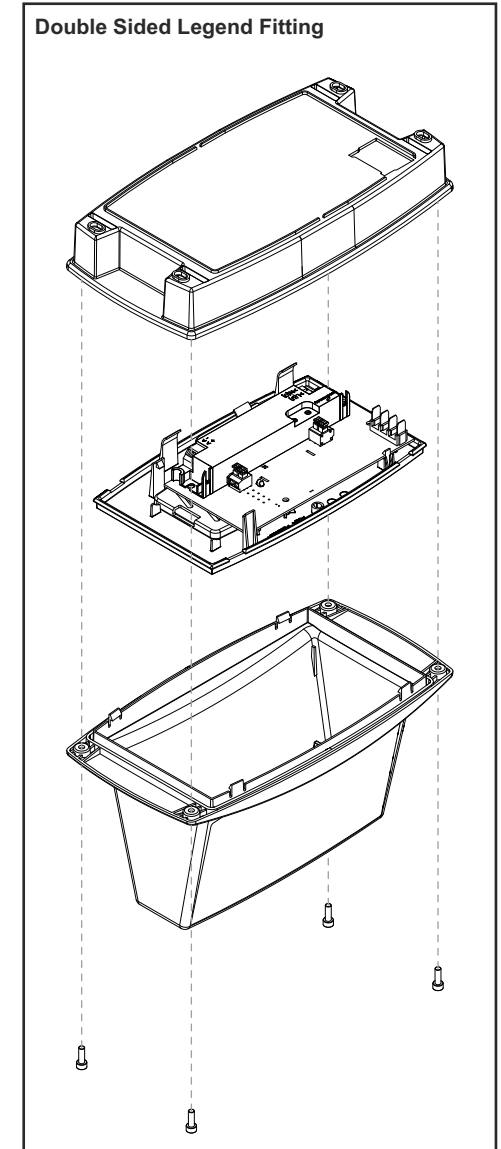


- Product luminaires comply with EN60598-2-22 and are suitable for use in normal interior and exterior conditions.
- For self contained variants - This luminaire has an ambient temperature range of -5°C to 25°C
- For slave variants - This luminaire has an ambient temperature range of -15°C to 40°C

Standard Fitting



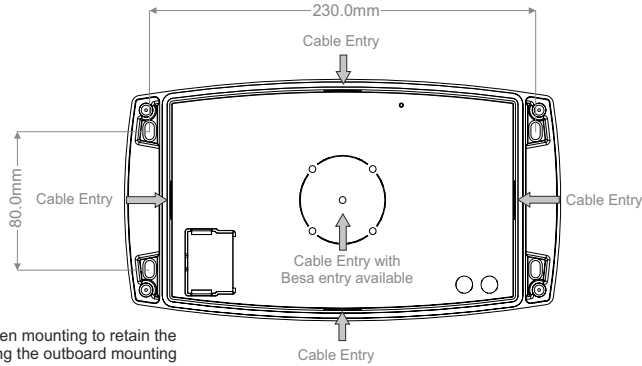
Double Sided Legend Fitting



1

Mounting

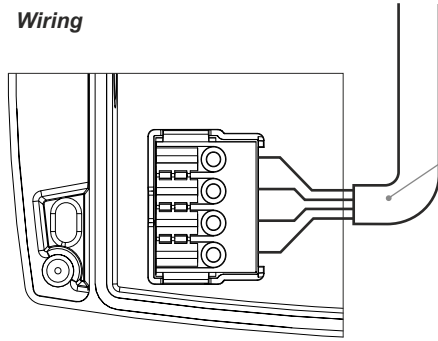
Take base of fitting, knock through the preferred cable entry point, Note: centre cable entry requires drilling. Then use 4 x suitable mounting screws (not supplied) and secure fitting to mounting surface



Maintaining IP Rating - Take care when mounting to retain the IP rating. This can be achieved by using the outboard mounting holes and appropriate cable gland.

2

Wiring



Wire mains cable into terminal block on fitting base as shown in table below

- ⊕ - Earth (Green/Yellow)
 - N - Neutral (Blue)
 - L1 - Unswitched Live (Black)
 - L2 - Switched Live (Brown)
- Ensure mains supply is turned off**

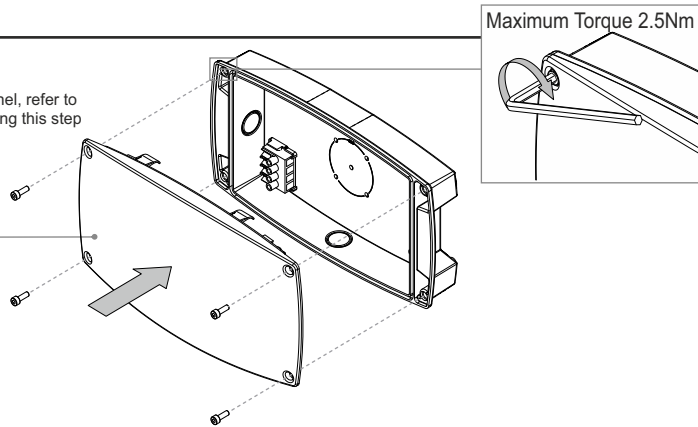
Self Contained	Slave	Ceag
⊕	⊕	⊕
N	N	N
L1	L1	L1
L2	-	-

3

Fixing

NOTE: If using legend panel, refer to next page before completing this step

Fit LED geartray and diffuser into fitting base and secure using 4 x allen key screws



Fitting Legend Panel(s) (If Required - ordered separately)

Standard Fitting

a. Take required legend with self adhesive backing and attach to removable legend panel.

b. Fit legend panel into lens by squeezing sides in and releasing when flush against lens face.

c. Click the geartray, LED side into lens, ensuring light pipe in the lens is aligned with the LED in the geartray and follow installation step ③ to complete installation.

Double Sided Legend Fitting

a. Take required legend with self adhesive backing and attach to removable legend panel.

b. Slide removable panel into on side of the double sided lens, ensuring it is supported by clips. Repeat this process with second legend panel on other side of lens.

c. Click the geartray, LED side into double sided lens, ensuring light pipe in the lens is aligned with the LED in the geartray and follow installation step ③ to complete installation.