

CrystalWay 20m/30m CGLine+

Self-contained luminaire

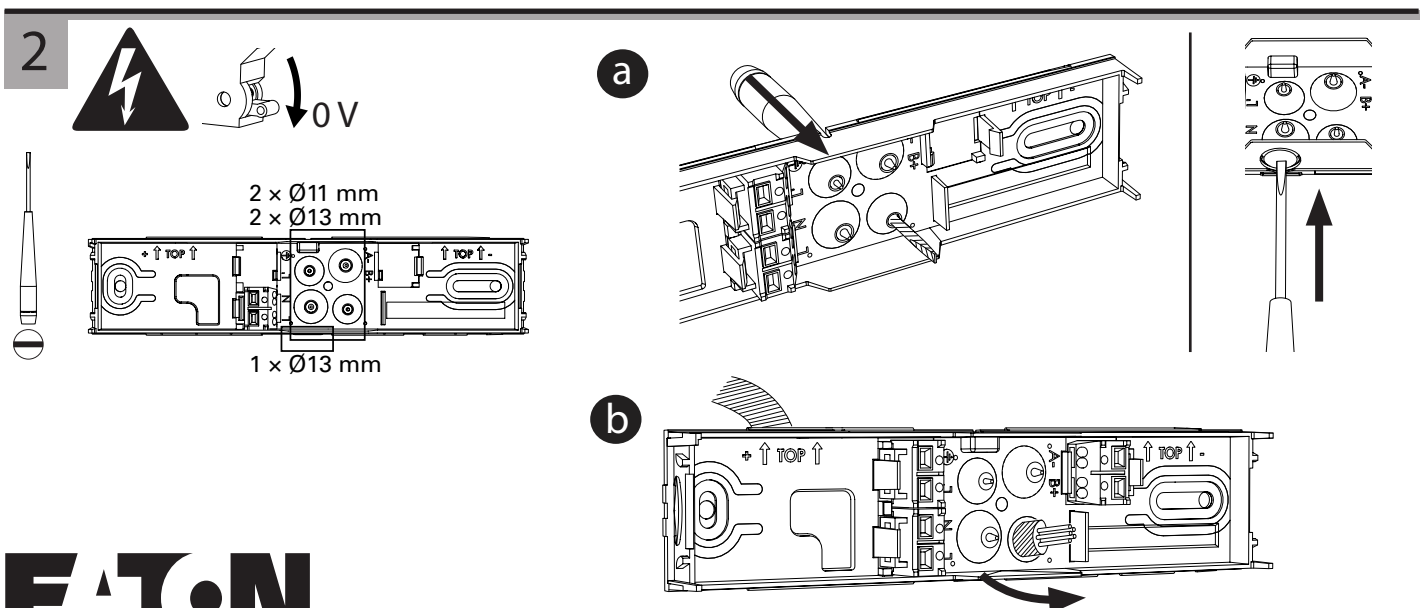
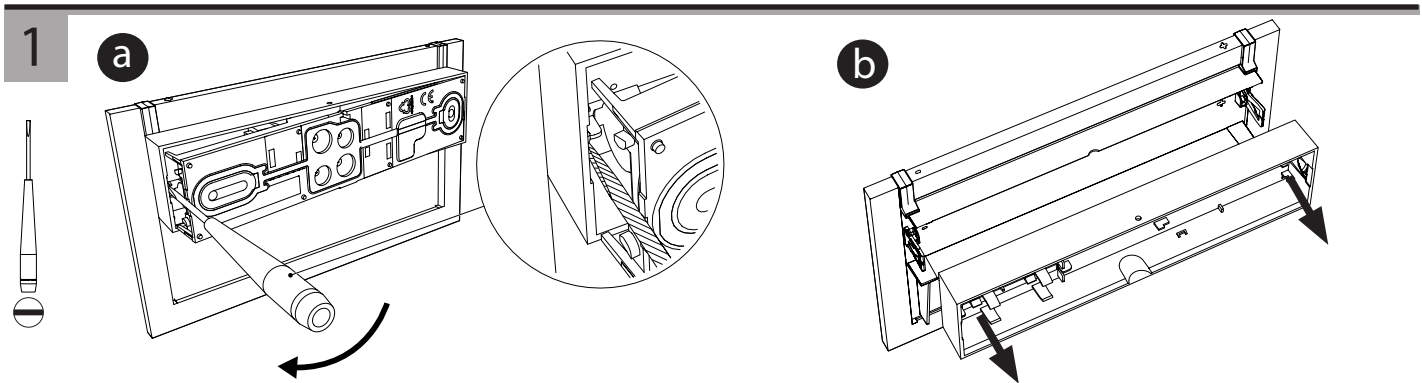
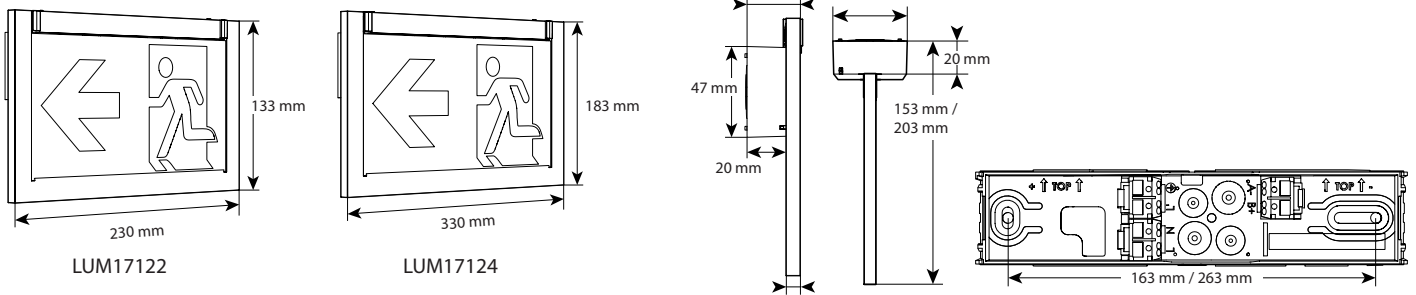
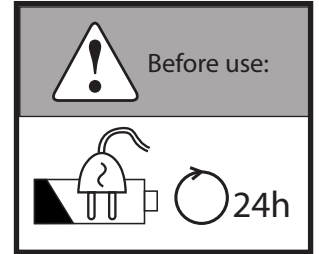


+ web-controller CGLine+

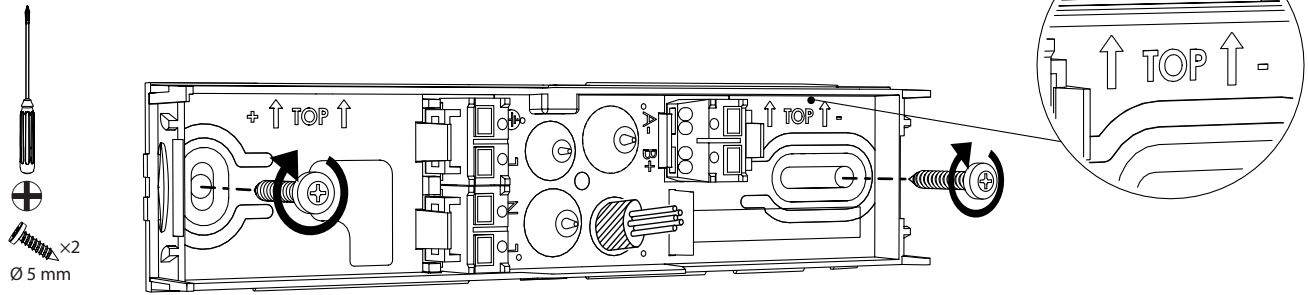
+ 40 °C
+ 5 °C

	×3 ×1 ×1 ×2 ×1 <small>Ref 40071352379</small>		×2 $\varnothing 5 \text{ mm}$ #2 #2
--	--	--	--

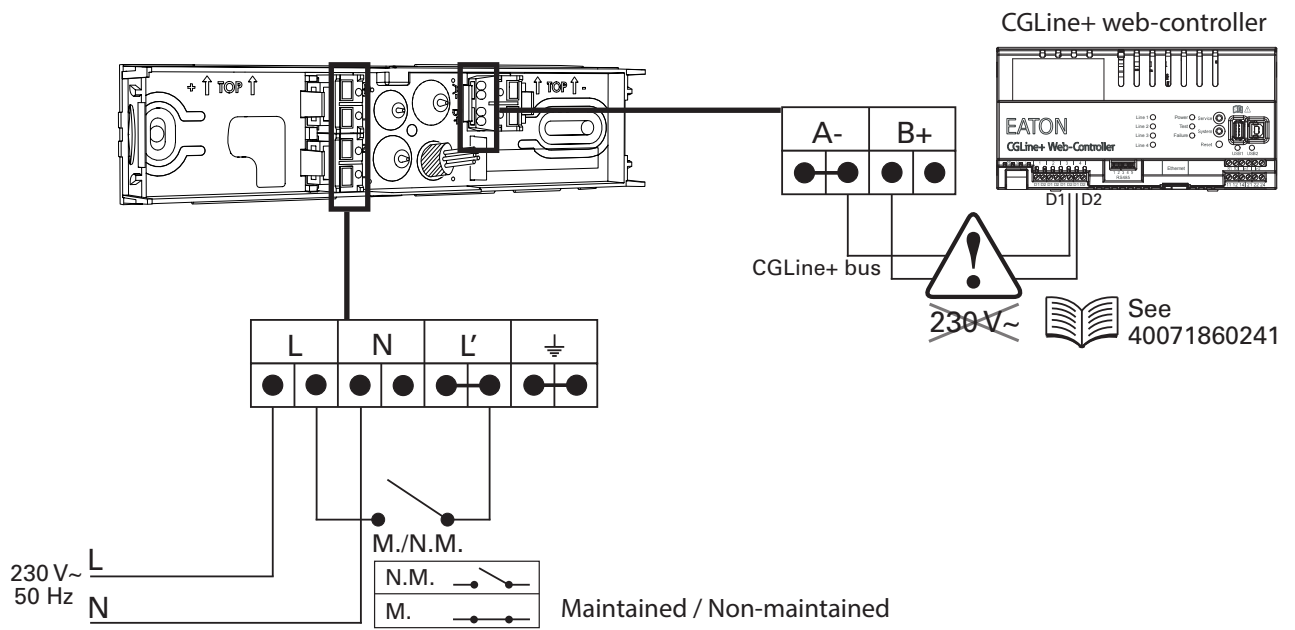
Not replaceable



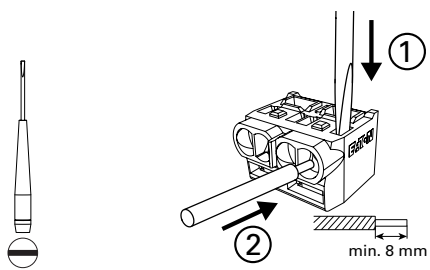
3



4

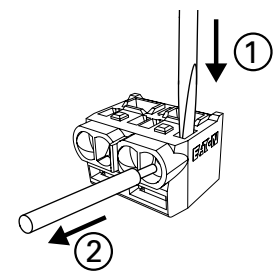


a

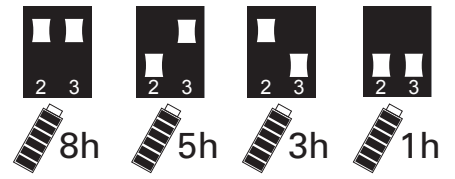
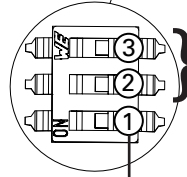
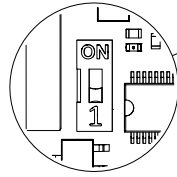
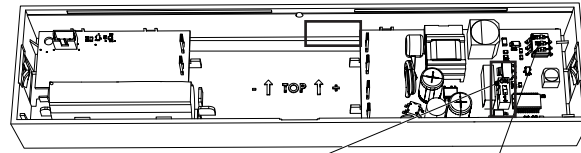


Rigid or flexible wire
 $0,5 < S < 2,5 \text{ mm}^2$

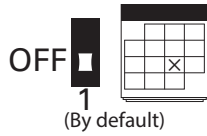
OUT



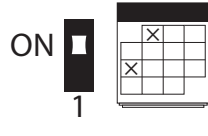
b



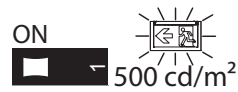
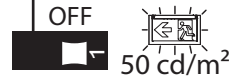
Tests (AT mode)



(By default)
↓
Test at the same date for all luminaires



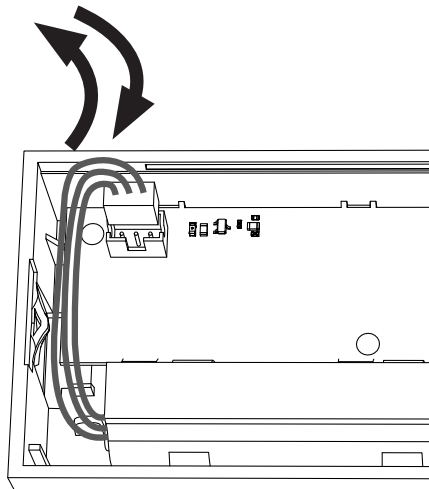
↓
Test rescheduled of 7 days for some luminaires



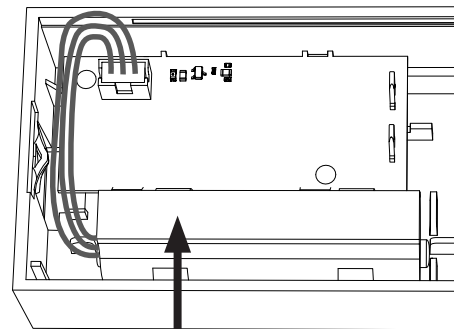
c



Reset config.
after setting **b**

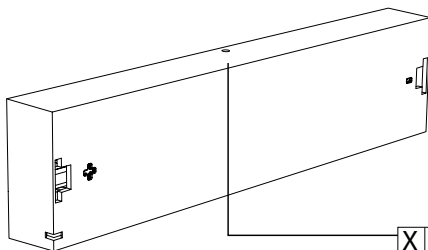


d



Installation date
jj/mm/aaaa

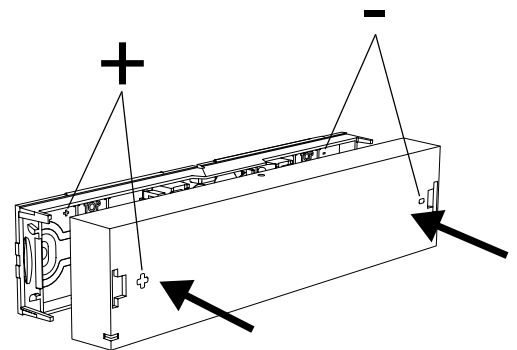
e



1h	→	60	→	60 lm
3h	→	180	→	30 lm
5h	→	300	→	15 lm
8h	→	480	→	10 lm

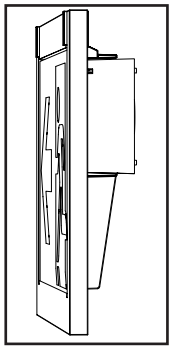
X ABEG

f



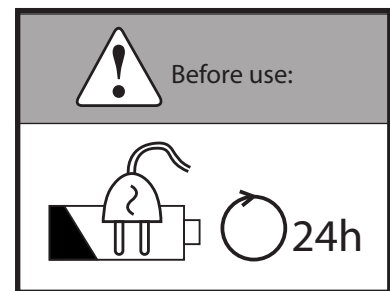
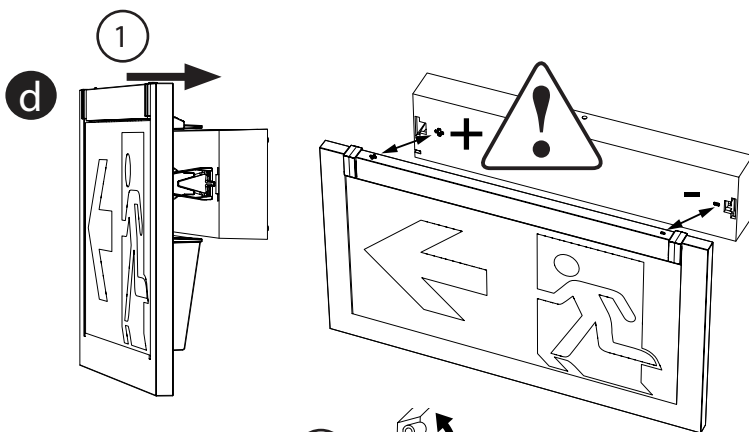
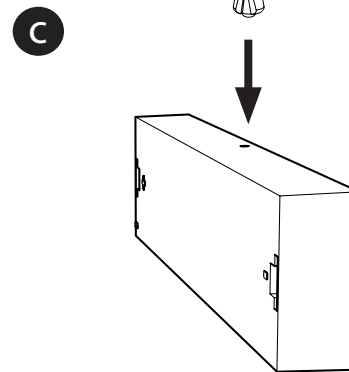
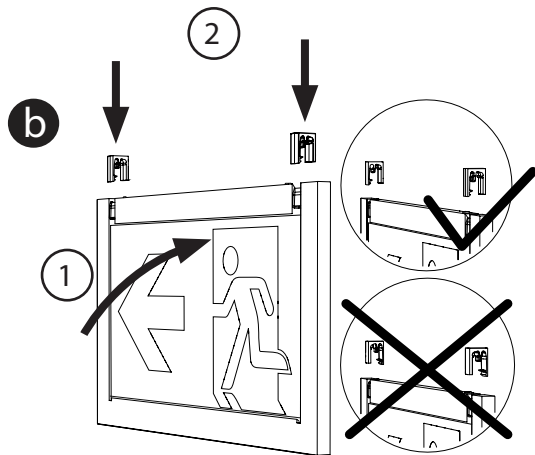
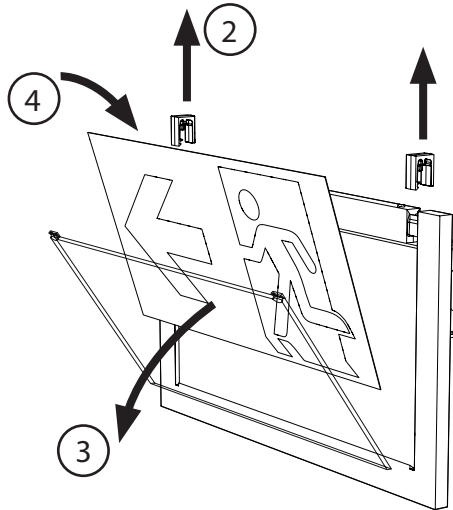
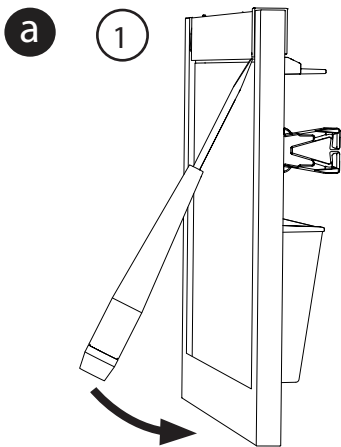
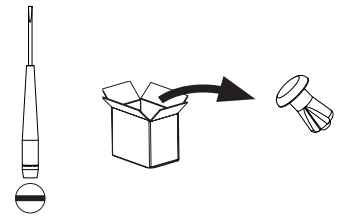
For modifying the light intensity ,
see "Manual testing and DIM level
setting", p.7.

5

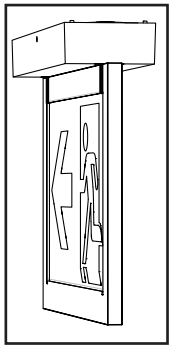


Wall-mounting

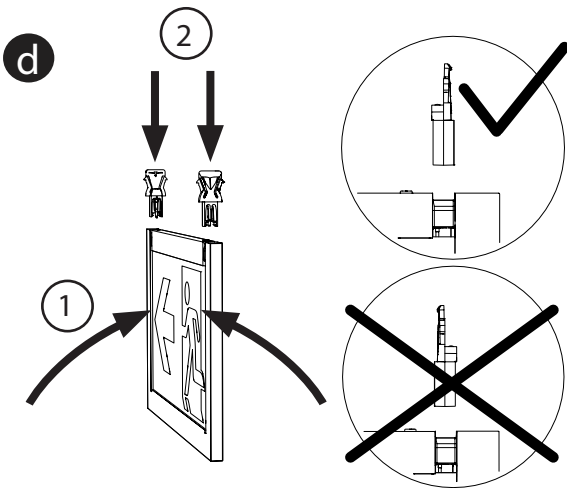
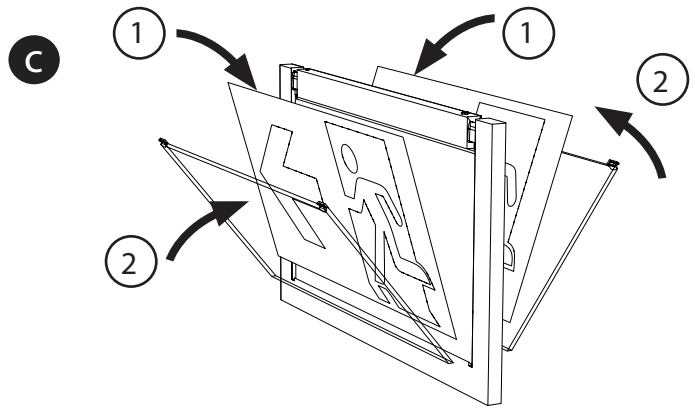
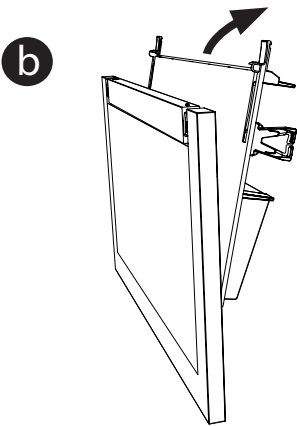
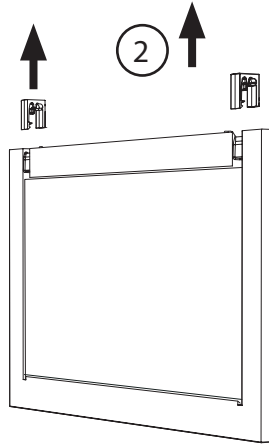
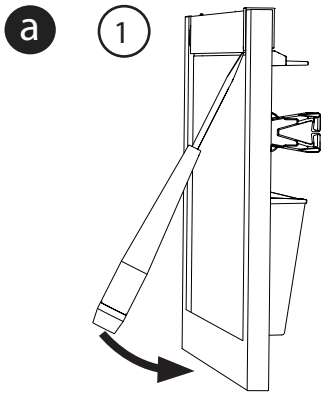
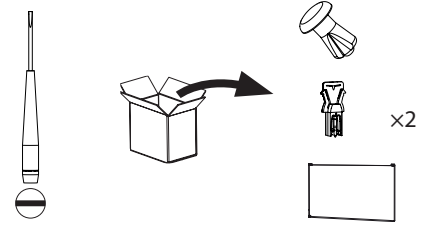
(Ceiling-mounting: see next page)



5



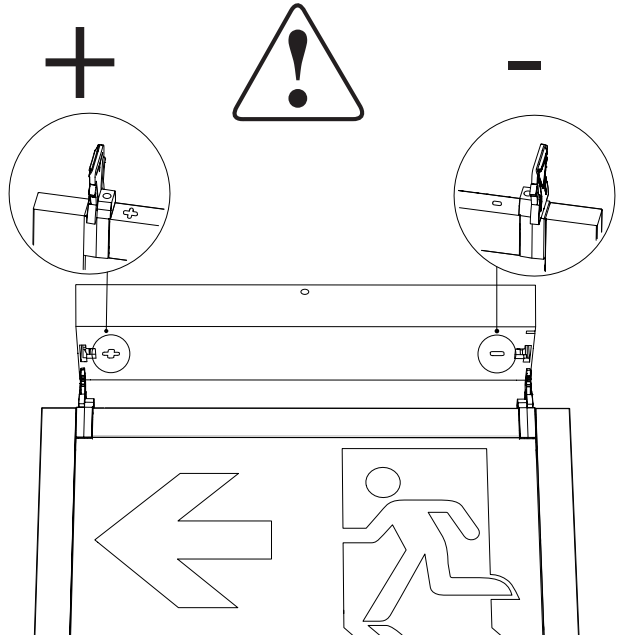
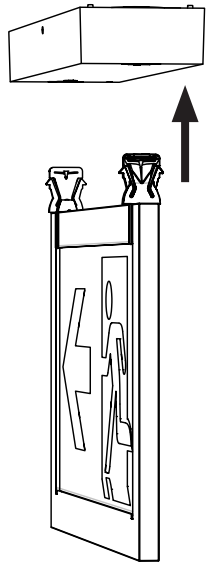
Ceiling-mounting



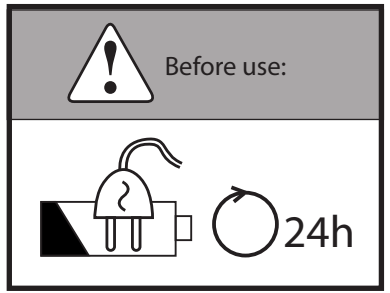
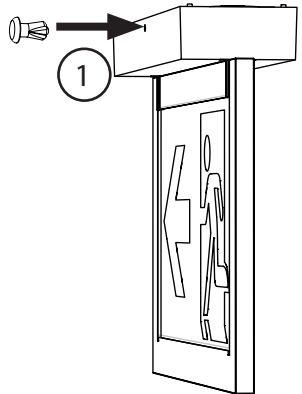
The ceiling-mounting is dedicated to places where the public cannot reach the product.

5

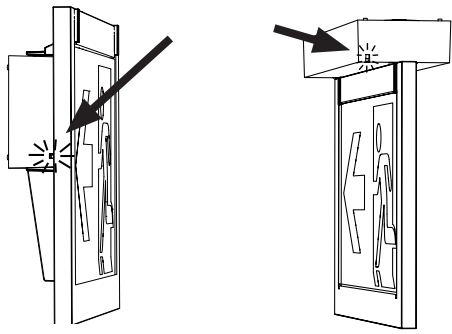
e



f

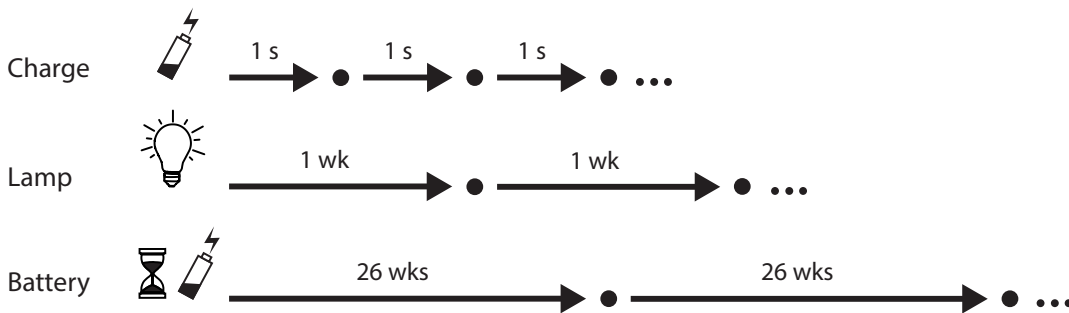


Autotest

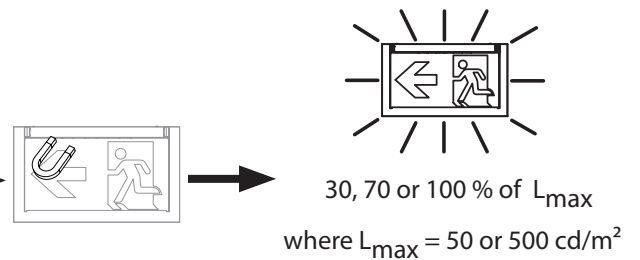
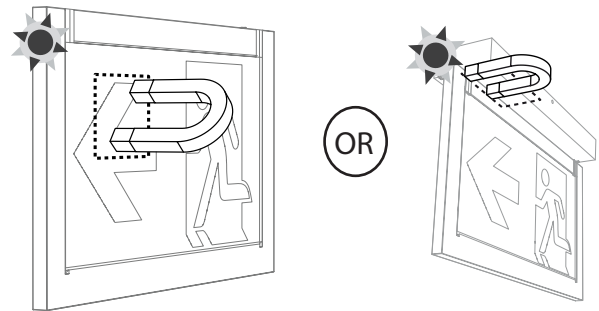
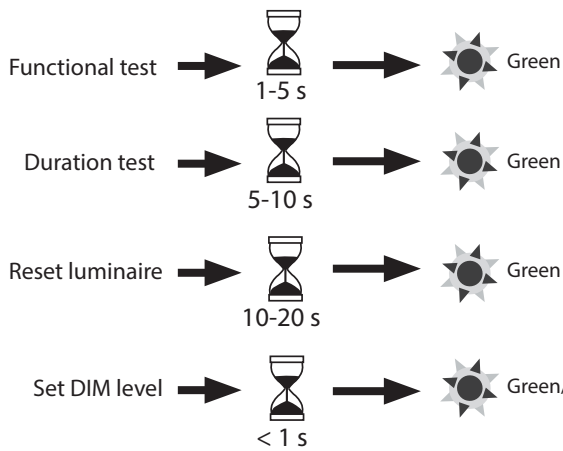


Green		OK
Green		Test
Green & yellow))) com
Yellow		2 s
Yellow		0,5 s

Constant Blinking

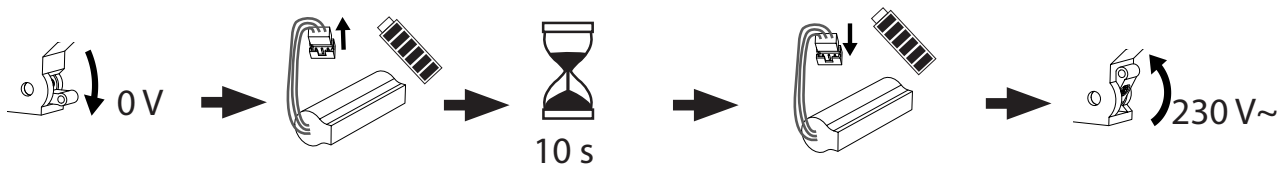


Manual testing and DIM level setting



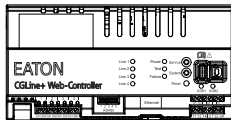
Initialization of test interval and product configuration

AT mode



Option CGLine+ web-controller

OR



See manual
40071860241

To be replaced

CrystalWay 20m CGLine+
(LUM17122)

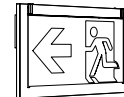


Battery pack 3,6 V/620 mAh Li-Ion
(LUM10568)

CrystalWay 30m CGLine+
(LUM17124)



Battery pack 3,6V/1240 mAh Li-Ion
(LUM10569)

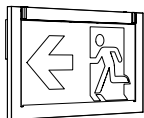


Diffuser kit 24 LEDs
(LUM10570)

Diffuser kit 38 LEDs
(LUM10571)



4 hooks for
CrystalWay 20/30m
diffuser: LUM10572



Battery pack



EN



CrystalWay20mCGLine+

LUM17122

IP 42 / IK 04

3.6V/620 mAh Li-Ion

LUM10568

1 h / 3 h / 5 h / 8 h

500 cd/m²

28 × LED 2.9 V
300 mA

230V~/50-60 Hz
2.5W (500cd/m²)
0.7 W (50 cd/m²)

EN 60598.1
EN 60598.2.22
EN1838/ISO30061
ENG2034

CrystalWay30mCGLine+

LUM17124

IP 42 / IK 04

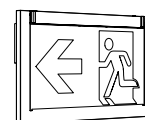
3.6V/1240mAh Li-Ion

LUM10569

500 cd/m²

36 × LED 2.9 V
600 mA

230V~/50-60 Hz
4.2W (500cd/m²)
0.9 W (50 cd/m²)



Powering Business Worldwide

Eaton
Cooper Sécurité SAS
PEE II - Rue Beethoven - BP10184
63204 RIOM CEDEX FRANCE
Phone: +33 (0) 825 826 212
www.cooperfrance.com
www.eaton.com

© 2017 Eaton
ZNO2034400 E - 03/2017
All rights reserved.
Alle Rechte vorbehalten.

