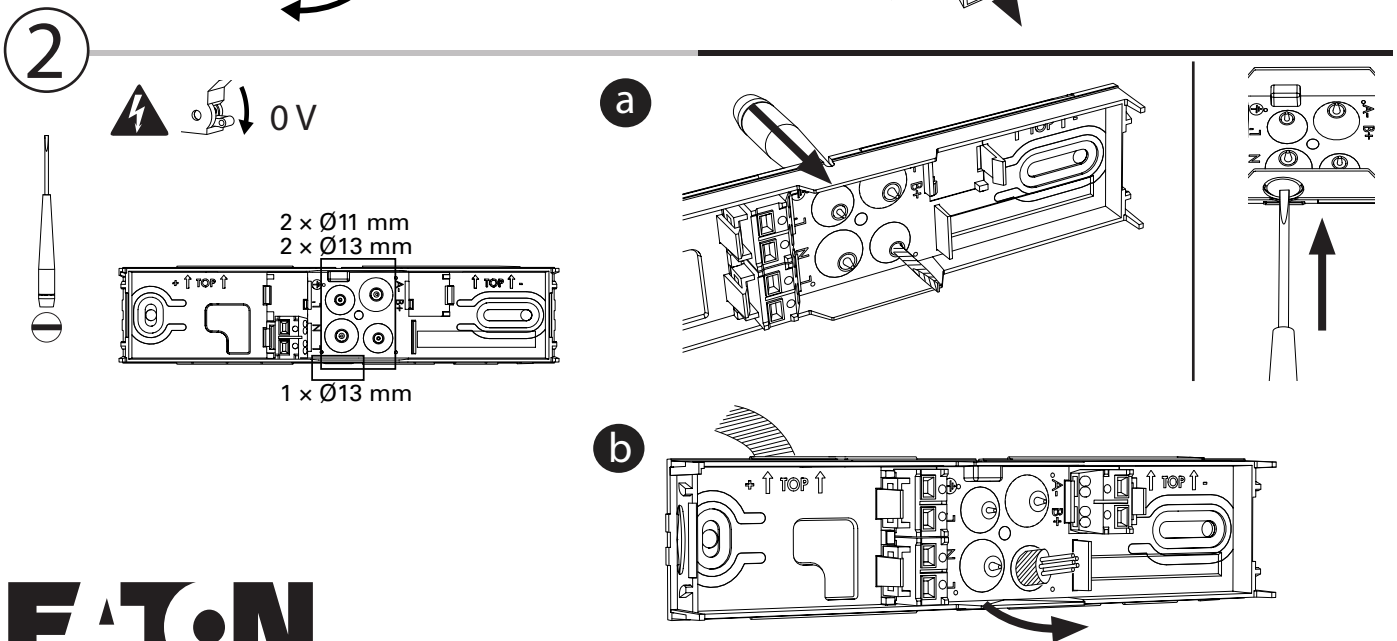
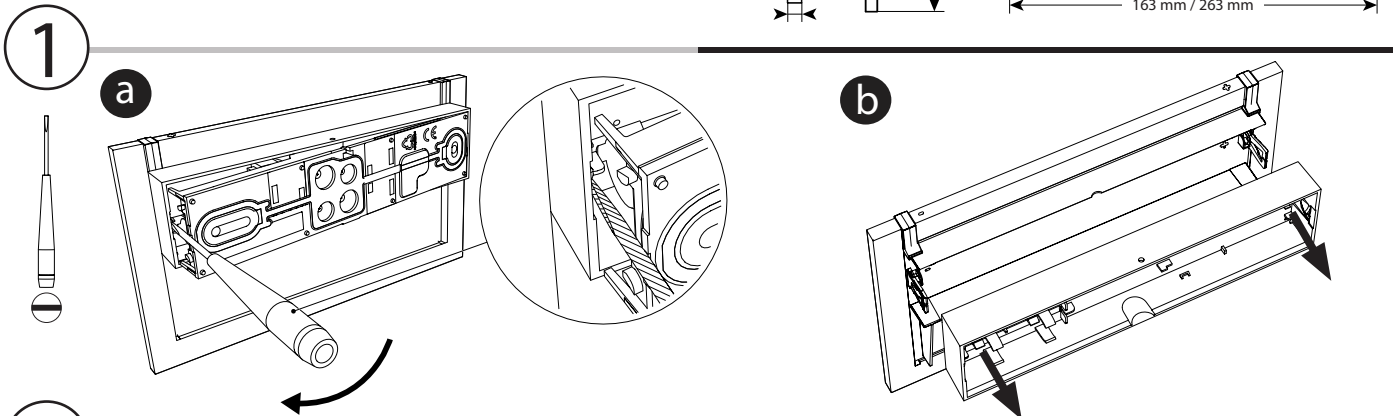
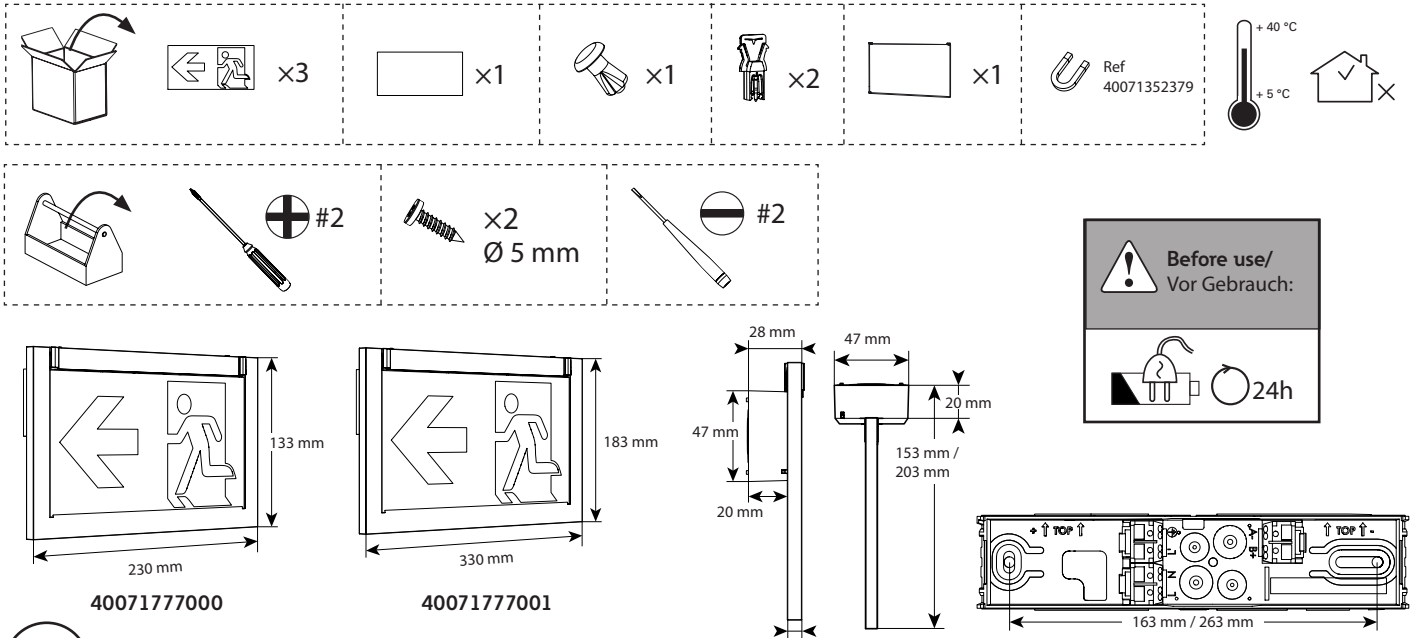


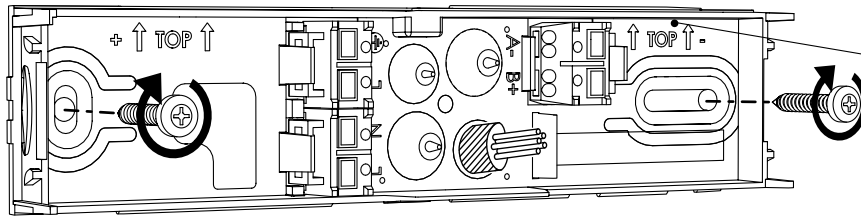
CrystalWay 1/8h IA CGLine+

Self-contained luminaire / Einzelbatterieleuchte

+ web-controller CGLine+ (and variants / und Varianten)



3



4

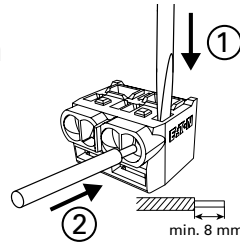
Rigid or flexible wire
Starre oder flexible Leitung
 $0,5 < S < 2,5 \text{ mm}^2$



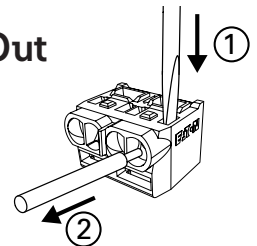
If rigid wire
Wenn starre Leitung
 $1,5 < S < 2,5 \text{ mm}^2$



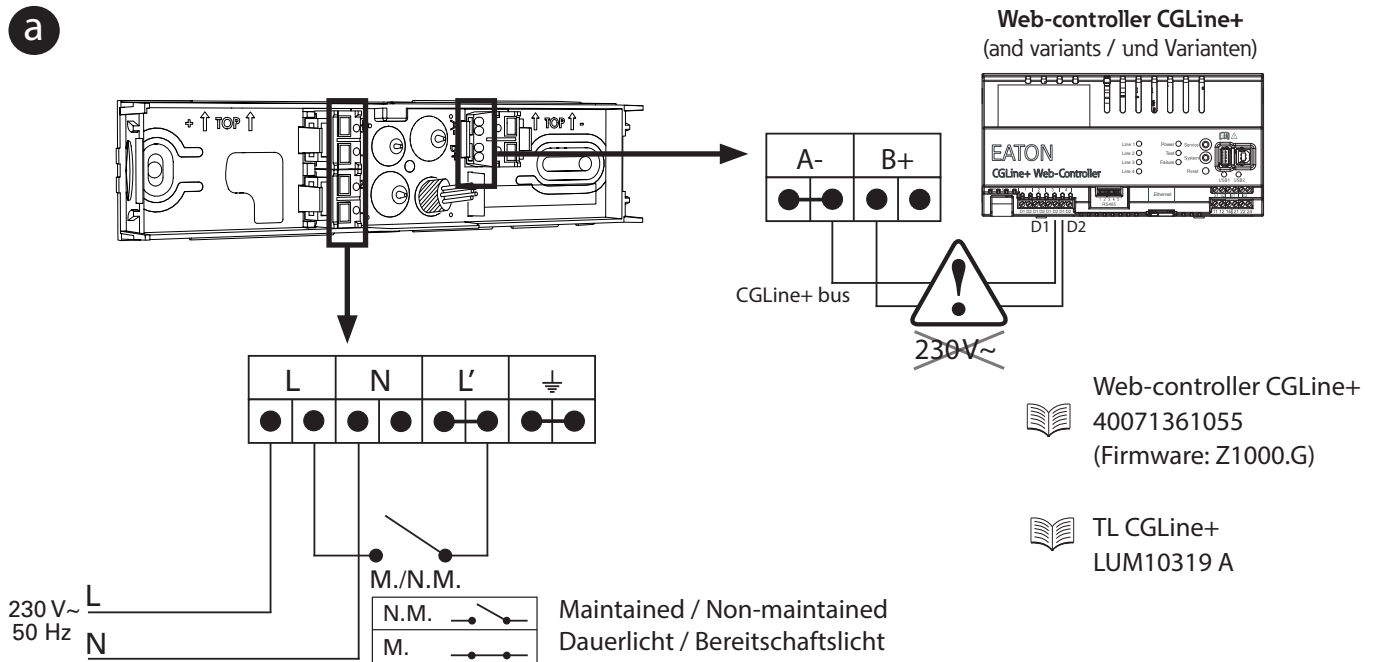
In



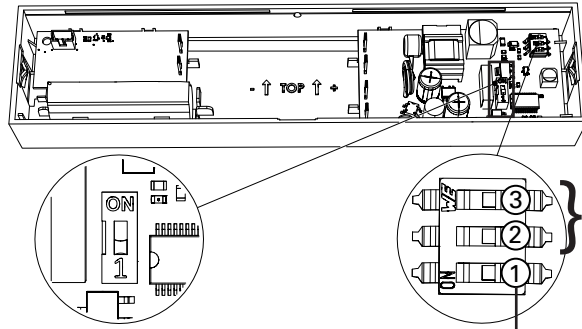
Out



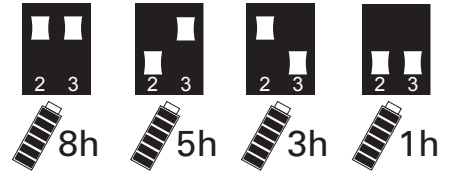
a



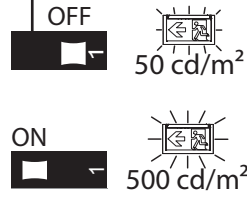
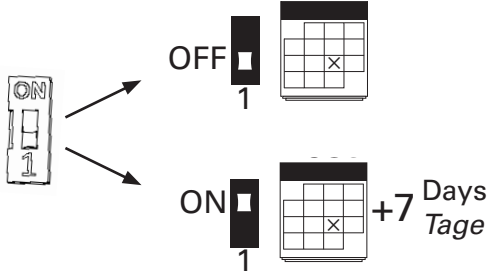
b



Autonomy setting/Einstellung der Autonomie

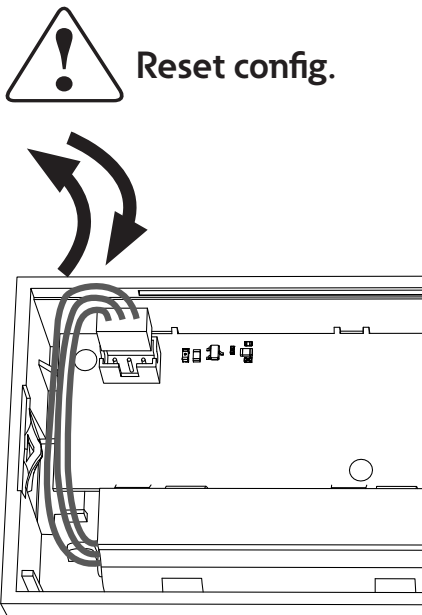


Tests (AT mode)

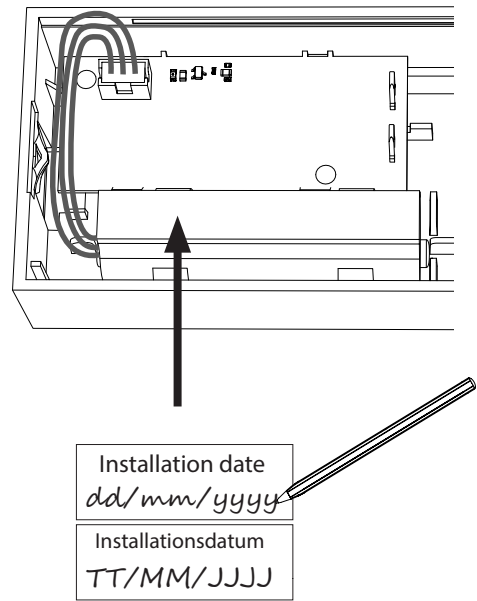


Light intensity setting /
Einstellung der Lichtintensität

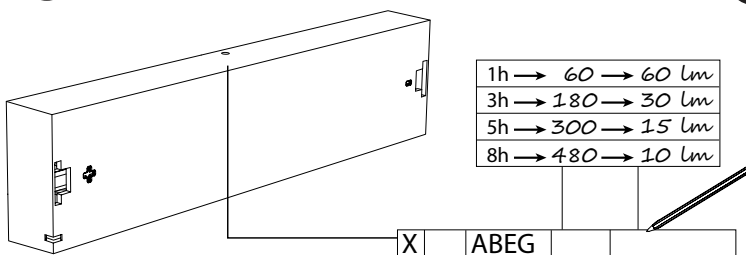
c



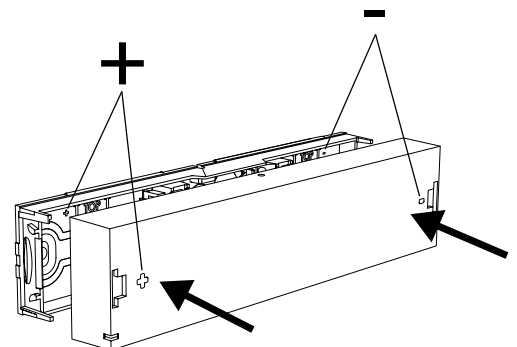
d



e



f



5

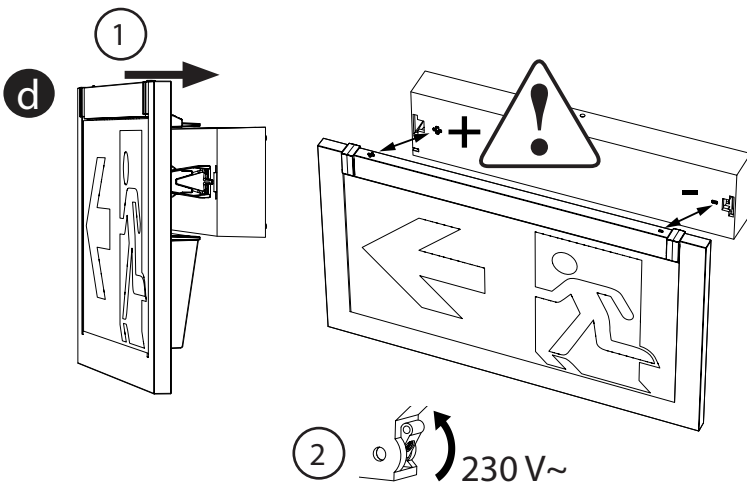
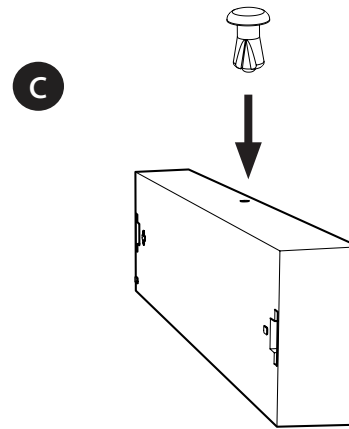
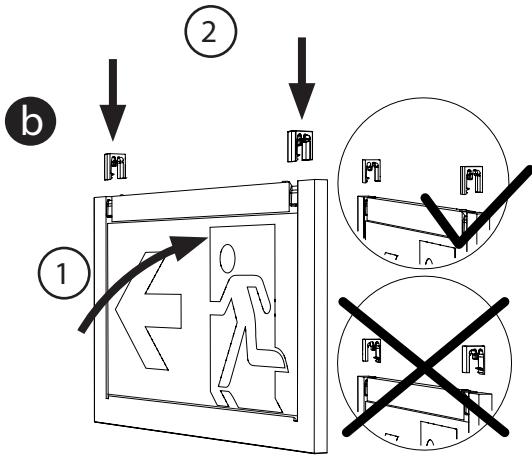
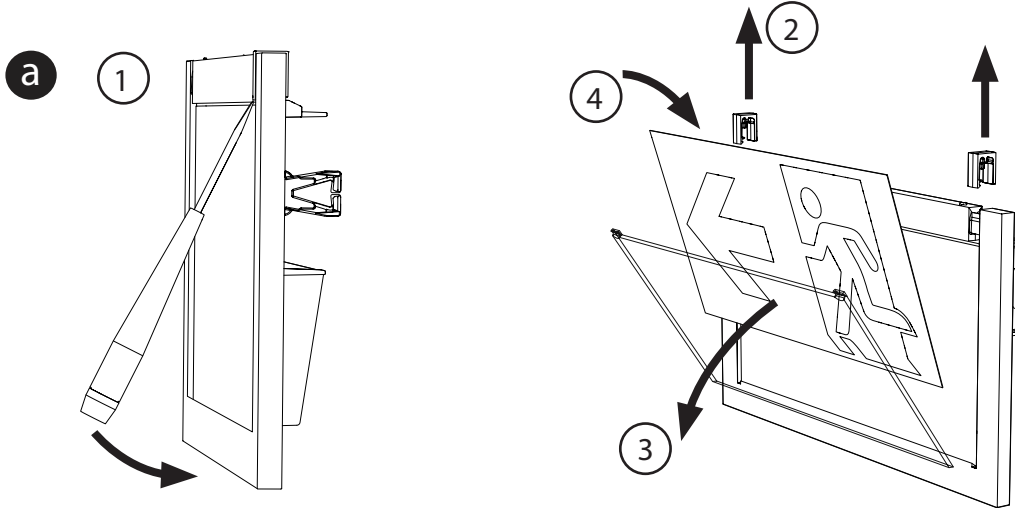
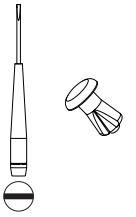


Wall-mounting / Wandmontage

(Ceiling-mounting: see next page/
Deckenmontage: siehe nächste Seite)

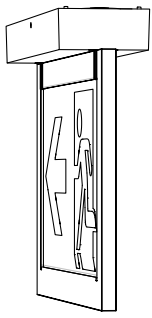


Need help for the installation ?
Brauche Hilfe für die Installation ?

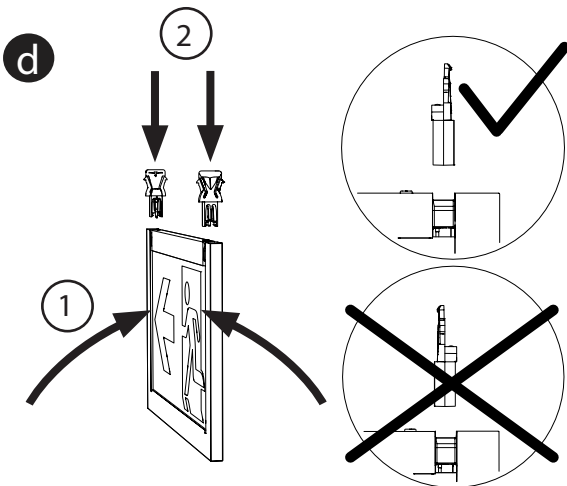
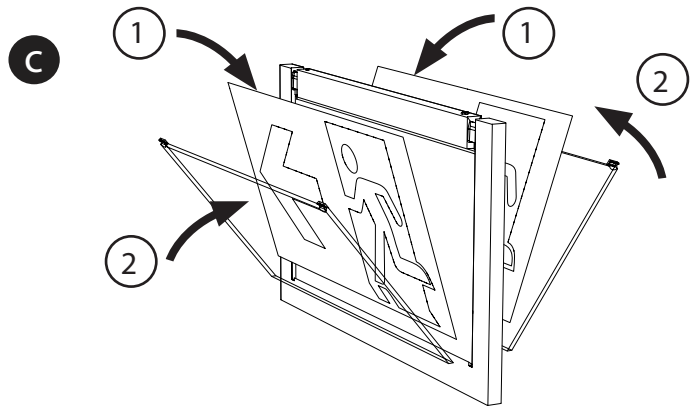
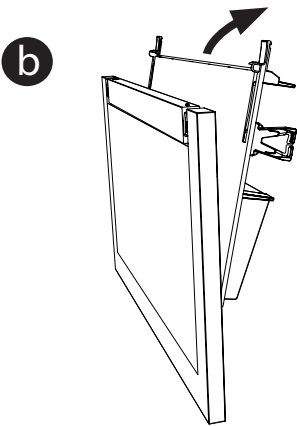
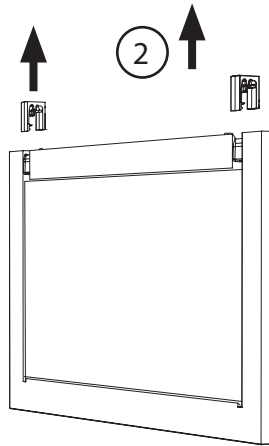
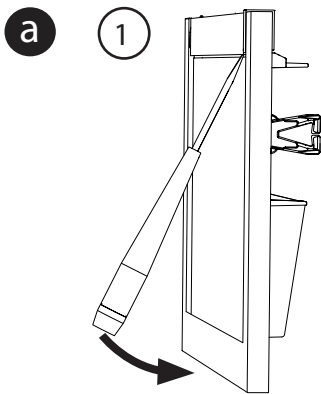
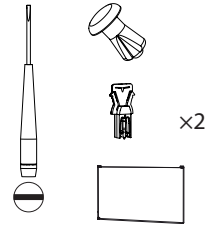


	Before use/ Vor Gebrauch

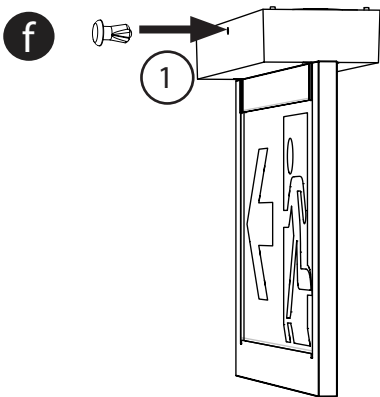
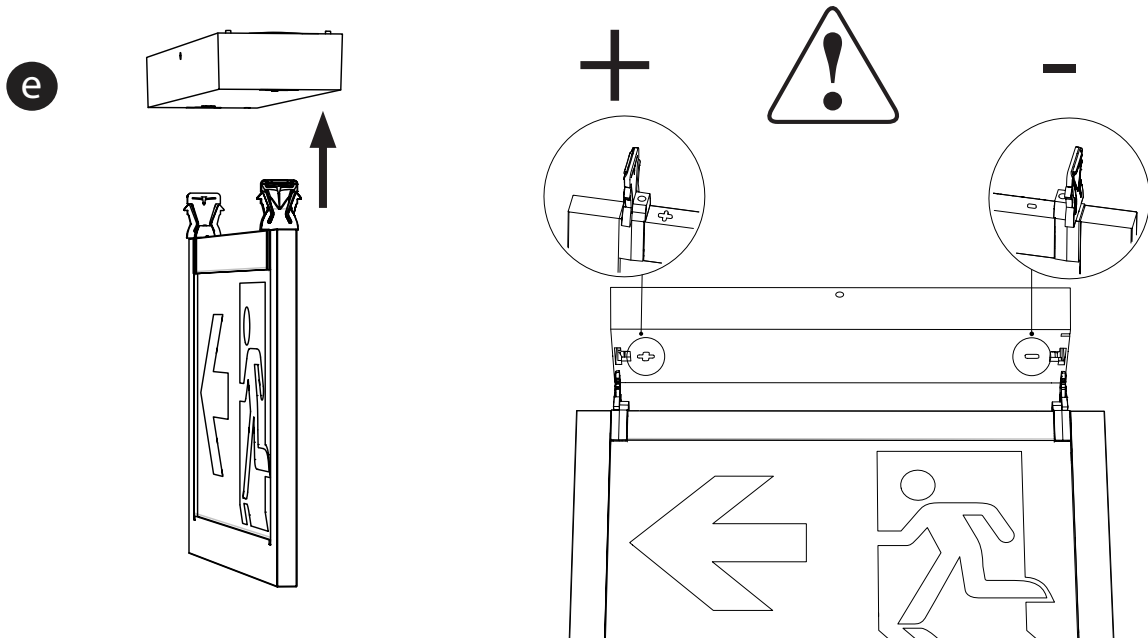
5



Ceiling-mounting/ Deckenmontage



The ceiling-mounting is dedicated to places where the public cannot reach the product.



Before use/
Vor Gebrauch:

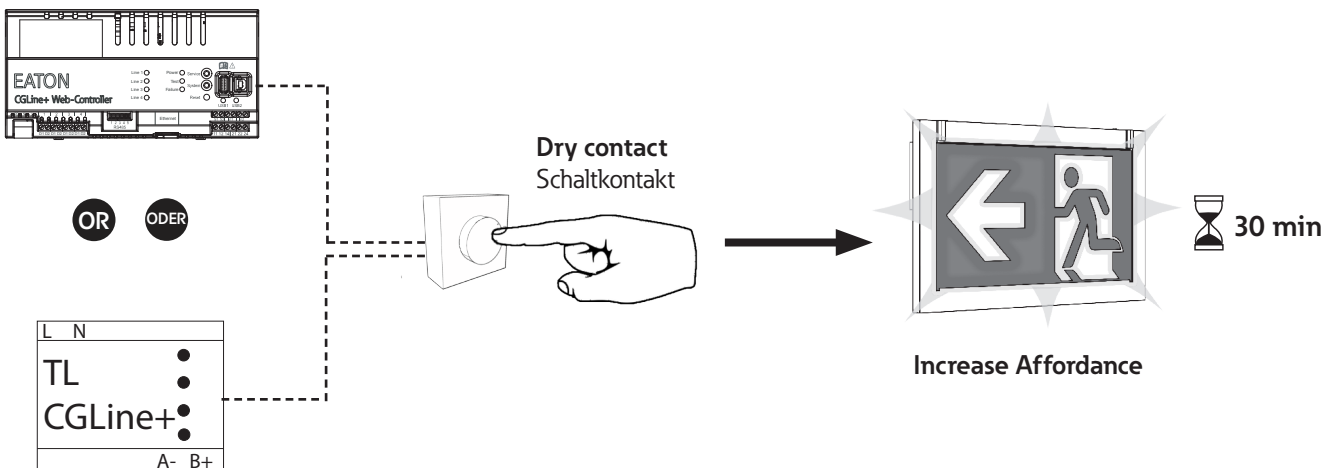
6 Increase Affordance (IA)

See PC Software CGLine+ manual for IA configurations. /
Siehe Betriebsanleitung PC Software CGLine+ für IA.

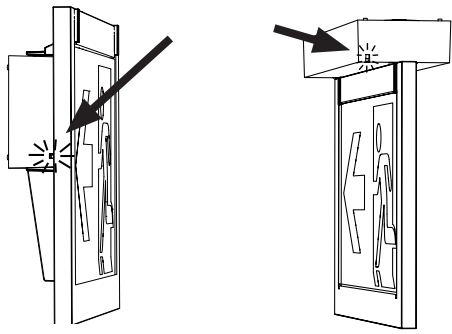
Web-controller CGLine+
40071361055
(Firmware: Z1000.G)

Web-controller CGLine+
(and variants / und Varianten)

TL CGLine+
LUM10319 A

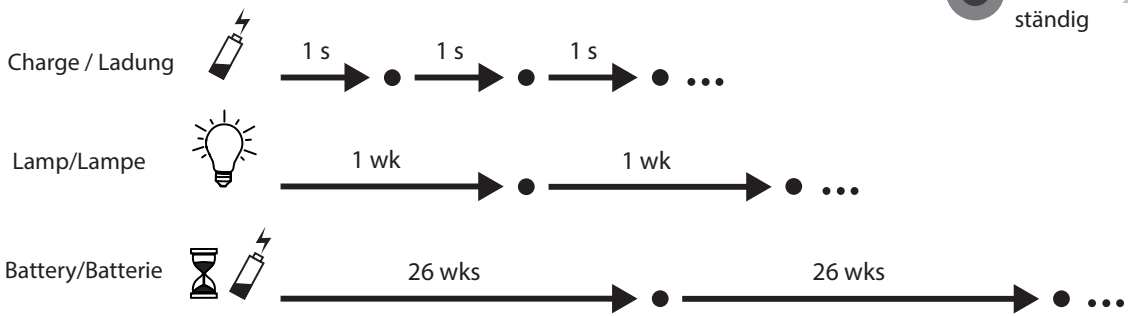


7 Autotest



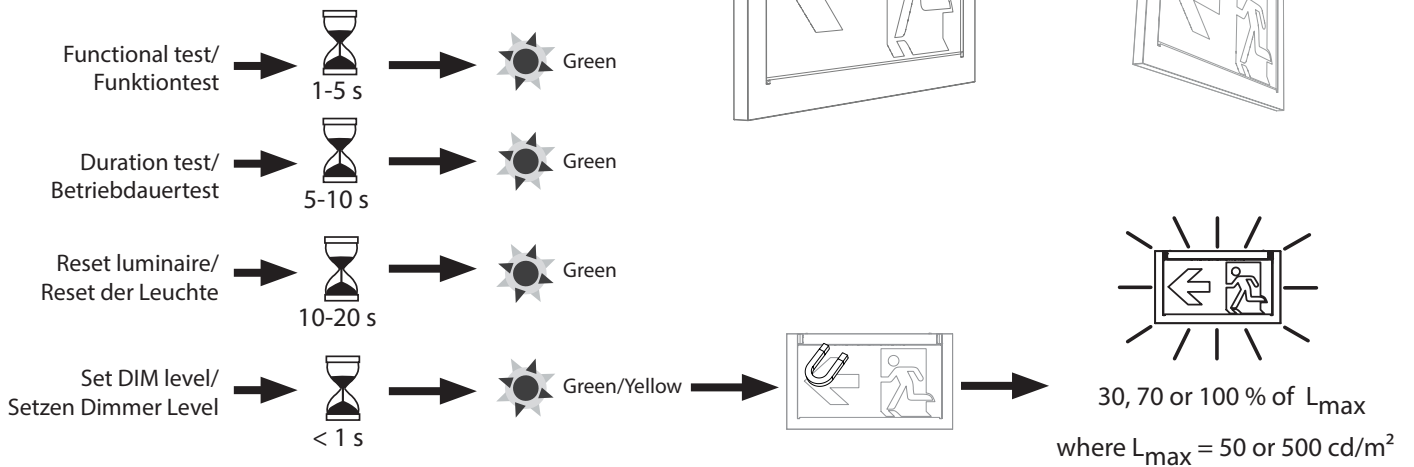
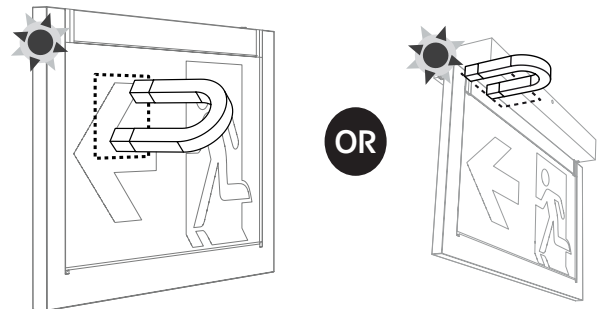
Green/Grün		OK
Green/Grün		Test
Green & yellow/ Grün und Gelb))) ○ com
Yellow/Gelb		2 s
Yellow/Gelb		0,5 s

Constant/ständig Blinking/Blinker



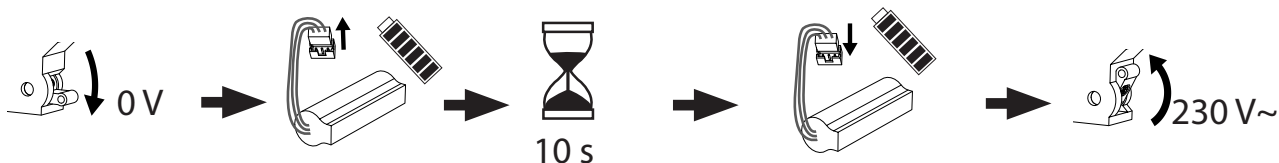
8 Use / Anwendung

230 V~



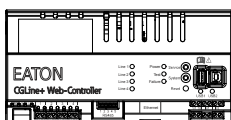
9 Initialization of test interval and product configuration / Initialisierung des Test-Intervalls und Produktkonfiguration

AT mode



OR ODER

Option CGLine+ web-controller



Web-controller CGLine+
40071361055



Not replaceable /
Nicht auswechselbar



Replaceable /
Auswechselbar

CrystalWay 19821 1-8h/D IA
CGLine+ (40071777000)

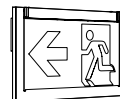


Battery pack 3,6 V/620 mAh Li-Ion
(LUM10568)

CrystalWay 19822 1-8h/D IA
CGLine+ (40071777001)



Battery pack 3,6V/1240 mAh Li-Ion
(LUM10569)

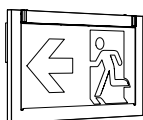


Diffuser kit 24 LEDs
(LUM10570)

Diffuser kit 38 LEDs
(LUM10571)



4 hooks for
CrystalWay 20/30m
diffuser: LUM10572



Battery pack



EN



CrystalWay 19821
1-8h/D IA CGLine+

40071777000

IP 42 / IK 04

3.6V/620 mAh Li-Ion

LUM10568

1 h / 3 h / 5 h / 8 h

500 cd/m²
24 × LED 2.9 V
300 mA

230V~/50-60 Hz
2.5W(500cd/m²)
0.7 W (50 cd/m²)

EN 60598.1
EN 60598.2.22
EN1838/ISO30061
EN62034

CrystalWay 19822
1-8h/D IA CGLine+

40071777001

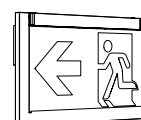
IP 42 / IK 04

3.6V/1240mAhLi-Ion

LUM10569

500 cd/m²
38 × LED 2.9 V
600 mA

230 V~/50-60 Hz
4.2W(500cd/m²)
0.9 W (50 cd/m²)



EATON

Powering Business Worldwide

Eaton
Cooper Sécurité SAS
PEE II - Rue Beethoven - BP10184
63204 RIOM CEDEX FRANCE
Phone: +33 (0) 825 826 212
www.cooperfrance.com
www.eaton.com

© 2017 Eaton
ZNO2040300 B- 11/2017
All rights reserved.
Alle Rechte vorbehalten.

