

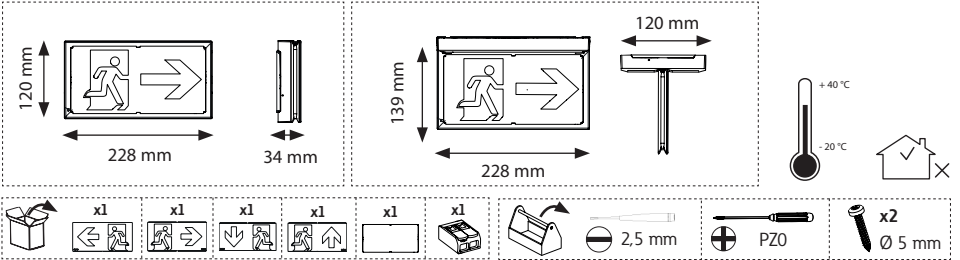
FlexiTech Exit Dual CG-S



Target group: Skilled electricians
Zielgruppe: Elektrofachkraft



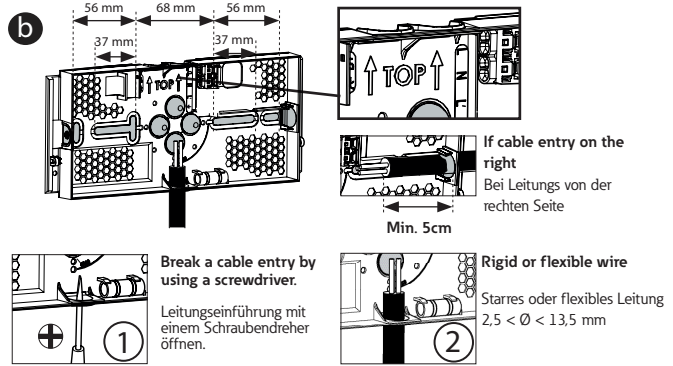
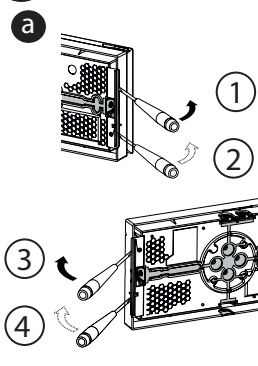
Intended application: Emergency lighting, not suitable for private use.
Verwendungszweck: Notbeleuchtung, nicht für privaten Gebrauch.



For working on the installation, please ensure first the emergency lighting system is blocked, the battery operation is interrupted, and the mains is OFF.

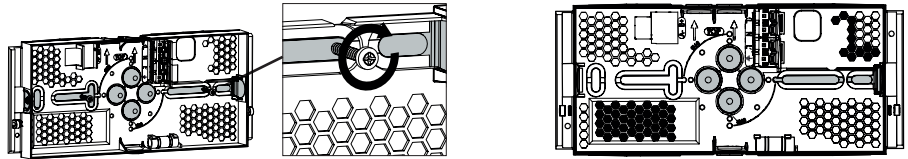
Stellen Sie bei Arbeiten an der Installation sicher, dass zuerst das Notbeleuchtungssystem blockiert, der Batteriebetrieb unterbrochen und das Stromnetz ausgeschaltet ist.

1



C Drill in the honeycomb zones (IP43) or in the 4 flexible material parts (IP65).
Bohren Sie in den Wabenzonen (IP43) oder im flexiblen Material (IP65).

! Drilling zones to avoid
Zu vermeidende Bohrzonen

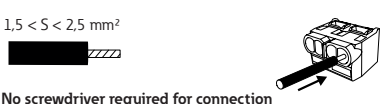


$S < 1.5 \text{ mm}^2$




Use screwdriver to place and remove wire
Stecken und Entfernen der Leitungen mittels Schraubendreher

$1.5 < S < 2.5 \text{ mm}^2$

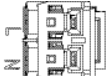
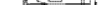


No screwdriver required for connection
Stecken der Leitung ohne Schraubendreher möglich

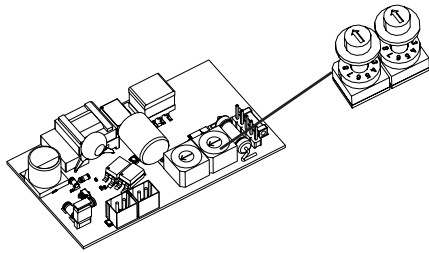

min. 8 mm

 **Check the packaging for the whole cabling details.**
Überprüfen Sie die Verpackung auf die gesamten Verkabelungsdetails

220-240V AC - 50/60 Hz
176-275V DC

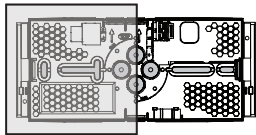
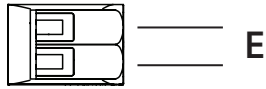
L 
N 

Addressing/Adressierung

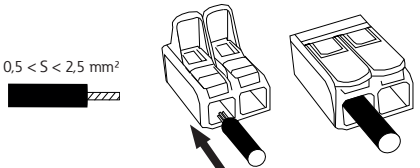


		0 + 0 =	No address (without CG-S monitoring)/ Keine Adresse (ohne CG-S Überwachung)
		0 + 1 =	1
		0 + 9 =	9
		1 + 0 =	10
		1 + 1 =	11
		2 + 0 =	20
		Max. 20	

Optional 



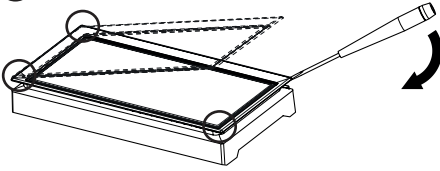
$0.5 < S < 2.5 \text{ mm}^2$



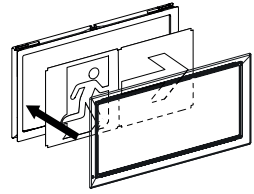
3

PICTOGRAM CONFIGURATION PIKTOGRAMM-KONFIGURATION

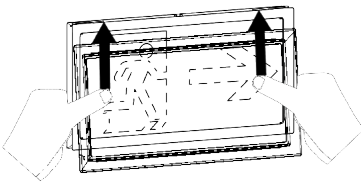
a



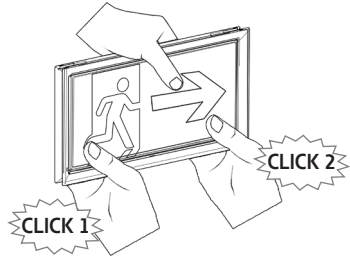
b



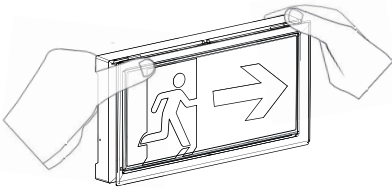
c



d



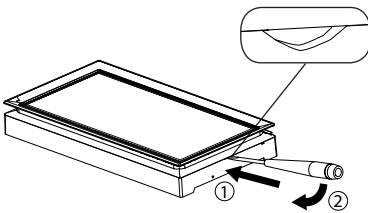
e



4

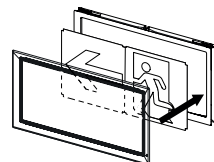
CEILING MOUNTING DECKENMONTAGE

a



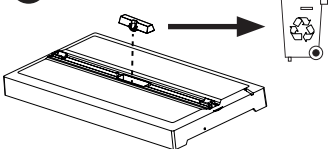
b

Back / Rückseite

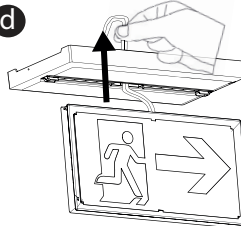


See steps 4 c-d.
Siehe Schritte 4 c-d

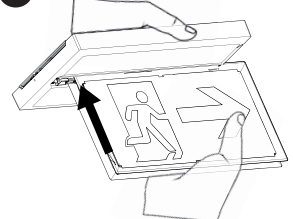
c

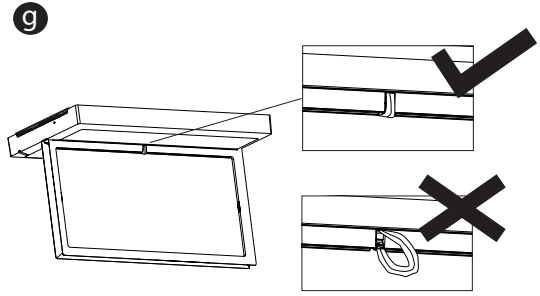
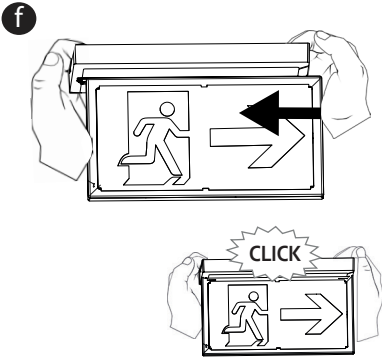


d



e





Power consumption mains operation
 (apparent/effective power)
Anschlussleistung Netzbetrieb
 (Scheinleistung / Wirkleistung)



EN

FT2ED4ICGS	3.9VA / 1.6W	20M	IP43 / IK07	16 x LED 3V 260mA	EN60598.1 EN 60598.2.22 EN1838/ISO30061
------------	--------------	-----	-------------	-------------------	---



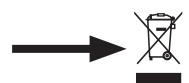
Not replaceable
 Nicht austauschbar

When the life time of light source is over, replace the luminaire.
 Wenn das Lebensdauerende der Lichtquelle erreicht wurde, ersetzen Sie die Leuchte.

Eaton
 Cooper Sécurité SAS
 PEE II - Rue Beethoven - BP10184
 63204 RIOM CEDEX FRANCE
 Tél. +33 (0)825 826 212 (0,15 € TTC/min)
 www.cooperfrance.com
 www.eaton.com

Eaton
 EMEA Headquarters
 Route de la Longeraie 7
 1110 Morges, Switzerland
 Eaton.eu

© 2021 Eaton
 All Rights Reserved



WEEE: Contact your local dealer

Eaton.com/recycling

ZNO2058700 A- 04/2021

Eaton is a registered trademark.

All trademarks are property of their respective owners.

EATON

Powering Business Worldwide

