

ResistTel IP2 weatherproof VoIP-telephone

IP telephone for indoor and outdoor use



Overview

With approved technology of FHF, the ResistTel IP2 is suitable for outdoor installations. The ResistTel IP2 is the ideal device for every weather and a number of different operation sites, including exposure to seawater, high humidity or extensive mechanical strain.

The housing is made of impact and shock-resistant plastics and even resistant to acids, alkalis or lubricants. Its robust design represents a perfect packaging for the latest requirements for VoIP telephones combined with proven reliability for critical mission communications and high safety applications.

The ResistTel IP2 is designed to provide ultimate user comfort on the basis of industrial standards and decades of market leading expertise and know-how. It features a display with integrated heating for ultra low temperature environments. A headset is available as an accessory, which can be connected to the phone. A Hands-free operation is of course also integrated.

Features

- Protection class IP 66 according to IEC60529
- Ambient temperature -40 °C to +70 °C (heated display)
- Ring tone ≥ 95 dB(A) in 1 m distance
- Pixel-based illuminated LCD display
- V4A alphanumeric keypad
- Web-based monitoring (operating, handset, hands-free, ringing)
- User-friendly menu structure
- Standard protocols H.323, SIP, TSIP, SIPS and H.450
- Power supply: PoE or external
- Connection to 10/100-BASE-T Ethernet
- Relais Modul Two built-in independent relay contacts (optional)
- Hands-free operation

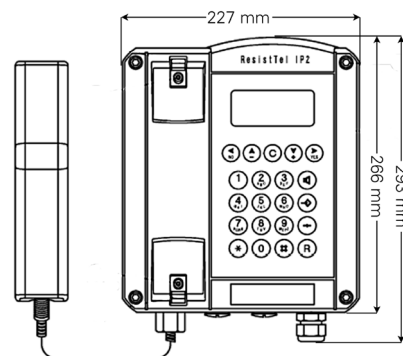
Technical features

Power supply	Power over Ethernet according to IEEE 802.3af via external 48 V DC PoE power supply (44 V min., 57 V max.)	
Voltage external power supply without optional galvanically separated inputs	15 VDC - 57 VDC	
Voltage external power supply with optional galvanically separated inputs	21,5 VDC - 57 VDC	
Power consumption	13 W	
Connection	RJ45 Port (10/100 Mbit/s)	
Ringing volume	Max. approx. 95 dB(A) in 1 m distance	
Housing		
Material	Glass fibre-reinforced polyester	
Height x width x depth	293 x 227 x 135 mm	
Weight (standard model)	Approx. 5,000 g	
Display	182 x 64 pixels	
Operating position	Vertical wall mounting	
Relay (optional) switching capacity	240 VAC	6 A
	24 V DC	6 A
	32 V DC	5 A
	48 V DC	1 A
Handset		
Mouthpiece	Electret microphone	
Earpiece	Dynamic capsule with magnetic field generator for inductive coupling of hearing aids	
Stabilization bracket	Standard equipment	
Environmental conditions		
Ambient temperature	-40 °C to +70 °C	
Transport and storage temperature	-40 °C to +80 °C	
Protection class	IP 66 according to IEC 60529	
Impact resistance	IK 09 according to EN IEC 62262:2002	

Characteristics

Protocols	H.323, SIP, TSIP, SIPS
General	H.323 Version 4 including H. 225, H.235, H.245 and RAS Gatekeeper routed signalling, H.450, Session initiation protocol (SIP) RTP, SRTP real time protocol – for voice data transmission
RTCP	Real time control protocol – first level of Quality of Service
RAS protocol	Support for external gatekeeper
DTMF	H.245 “alphanumeric” or “signal type”
Additional VoIP features	H.245 fast connect enblock dialing overlapped sending
Security	Encoded password authentication according to H.235
Quality of service	Prioritization of IP packages over TOS and DiffServ VLAN priority according to IEEE 802.1p/802.1q
Voice codecs	G.711 A-law/ μ -law (64 kbps), G.729A (16 kbps)
Echo compensation	G.168
Access	Via HTML web browser Password-protected with secure authentication
Troubleshooting	Log and trace files, status displays of interfaces a connections of interfaces and connections Ping connection test for internet protocol, sending of SNMP traps
Updates	Configuration recording/reading Boot code and firmware update via HTML upload Automatic update via update server
DSL access	PPPoE protocol
VPN	Tunneling with PPTP encoding via MPPE
NAT	Network address translation – for translation of official IP addresses into non-official addresses and vice versa
DHCP	Dynamic host configuration protocol – IP interfaces settings
ICMP	Internet control message protocol – for ping tests
Call tone generation	Automatic call tone generation according to European and US standard
Call transfer	Call transfer, in all usual variants: with/without consultation call, before/after answer etc
Call diversion	Call diversion/redirection
Hold	Call hold/retrieve
Call waiting	Call waiting, with respective indication to calling subscriber
Message	Message display on telephone
Pickup	Display indicating that a call can be picked up
Pickup list	Display listing the calls which can be picked up
Name display	To determine the displayed name
Callback	Call Completion, with all common variants such as call back when busy and call back when free
Three-party conference	Conference with 3 subscribers, also external subscribers
Caller ID	For separate indication of call numbers or groups
Multiple registration	Up to 6 registrations
Telephone book	Automatic availability of all registrations in central telephone book, integration of external data bases via LDAP
Time	Exact time information via time server access

General arrangement (all dimensions in mm)



Ordering requirements

Type	Designation	Model	Article number
ResistTel IP2	VoIP telephone	black	FHF 112 643 80
ResistTel IP2	VoIP telephone	black, with 2 nd LAN connection	FHF 112 643 81
ResistTel IP2	VoIP telephone	black, with relay contact	FHF 112 643 82
ResistTel IP2	VoIP telephone	black, with 2 nd LAN connection and relay connection	FHF 112 643 83
ResistTel IP2	VoIP telephone	red	FHF 112 643 80 02
ResistTel IP2	VoIP telephone	red, with 2 nd LAN connection	FHF 112 643 81 02
ResistTel IP2	VoIP telephone	red, with relay contact	FHF 112 643 82 02
ResistTel IP2	VoIP telephone	red, with 2 nd LAN connection and relay connection	FHF 112 643 83 02
Accessories			
	Headset		FHF 112 643 04
	Telephone hood model 404	galvanized steel, yellow	FHF 118 901 01
	Telephone hood model 404	V4A stainless steel	FHF 118 901 11
	Telephone hood model 404	synthetic material, orange	FHF 118 901 12
	Telephone hood model 404	synthetic material, yellow	FHF 118 901 13
	Telephone hood model 404	galvanized steel, red	FHF 118 901 14
	Telephone hood model 404	synthetic material, red	FHF 118 901 15
	Telephone hood model 404	GRP, yellow	FHF 118 901 22
	Telephone hood model 404	GRP, orange	FHF 118 901 23
	TWIN LED 24 VDC	only for variants with relay contact	FHF 118 823.. *
	TWIN LED 100...253VAC	only for variants with relay contact	FHF 118 827.. *

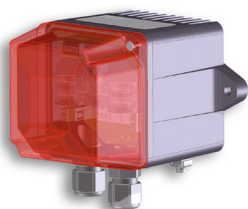
transparent	01
red	02
amber	03
green	04
blue	05

*The full article number for the TWIN is made up by appending the colour code to the article numbers given.

Accessories



Headset



TWIN LED



Protection hood