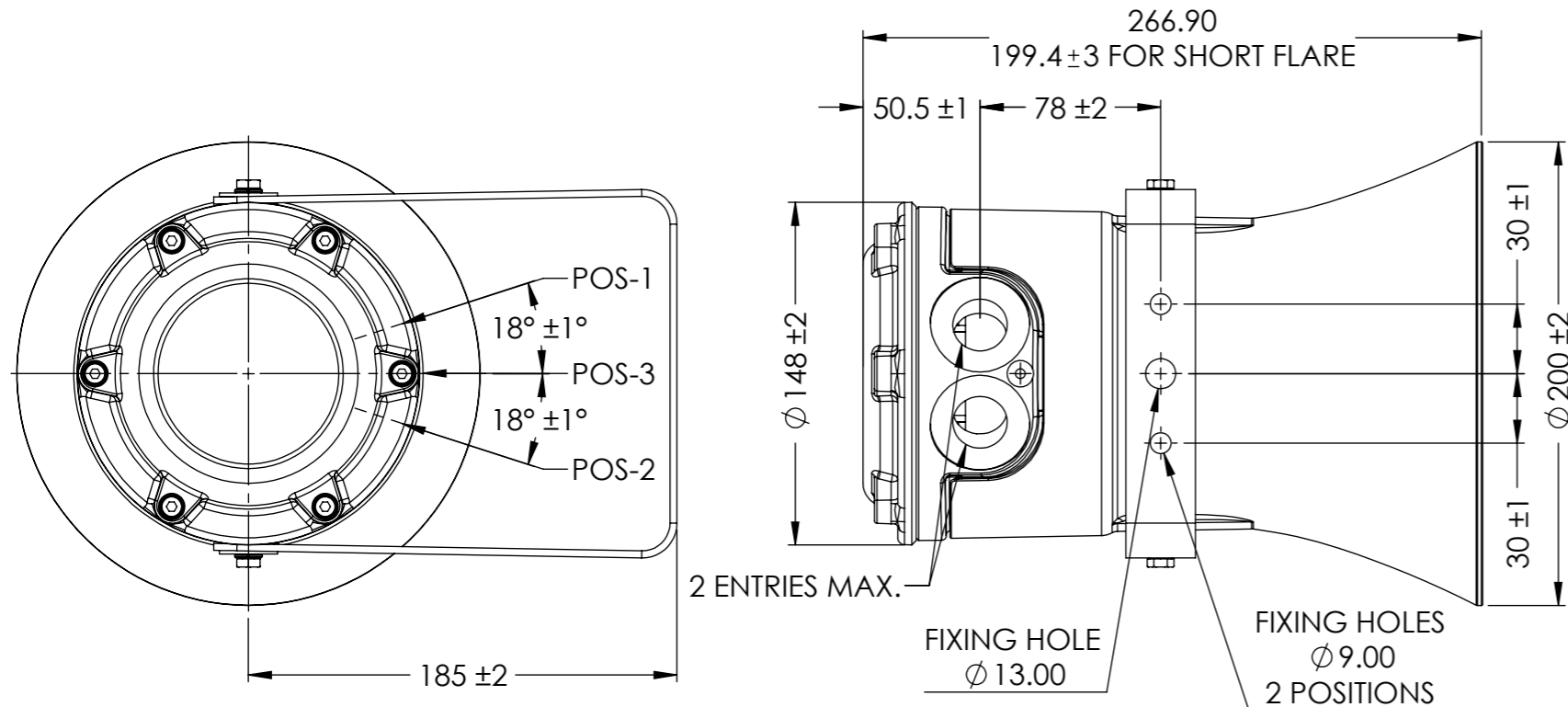
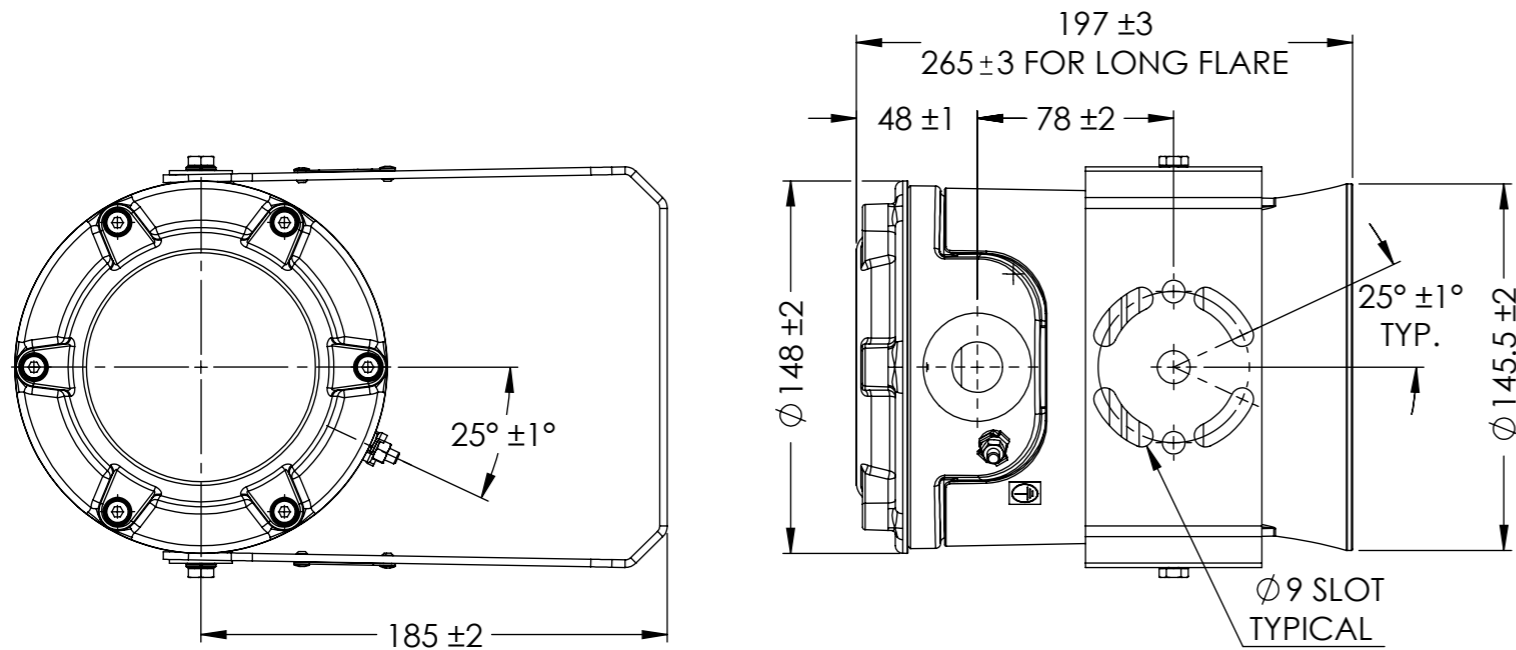


**ALUMINIUM ALLOY VERSION WITH LONG FLARE, STANDARD BRACKET AND TWIN CABLE ENTRIES**



**STAINLESS STEEL VERSION WITH SHORT FLARE AND SINGLE CABLE ENTRY**



**ALL DIMENSIONS ARE COMMON TO ALL UNIT VARIATIONS UNLESS OTHERWISE STATED  
ALL DIMENSIONS ARE IN MILLIMETRES**

**NOTES:**

- 1/ UNIT TYPE: DB3BM SOUNDER
- 2/ CERTIFICATION:
  - ATEX Ex db: CERT. NO. UL 21 ATEX02559X.  
Ex II 2 GD, Ex db IIC T\* Gb, Ex tb IIIC +\*°C Db (Tamb -60°C to +\*°C)  
IP66 (IP65 SHORT FLARE)
  - IECEx Ex db: CERT. NO. ULD 21.0017X.  
Ex db IIC T\* Gb, Ex tb IIIC \*°C Db (Tamb -60°C to +\*°C)  
IP66 (IP65 SHORT FLARE)
  - UKEX Ex db: CERT. NO. UL21UKEX2209X.  
Ex II 2 GD, Ex db IIC T\* Gb, Ex tb IIIC +\*°C Db (Tamb -60°C to +\*°C)  
IP66 (IP65 SHORT FLARE)
- 3/ CERTIFIED TEMPERATURE AND T-RATINGS - SEE TABLE
- 4/ ENCLOSURE AND COVER MATERIAL: MARINE GRADE ALLOY OR STAINLESS STEEL
- 5/ WEIGHT - ALLOY UNIT: 4.5±0.3Kg, STAINLESS STEEL UNIT: 8.4±0.3Kg
- 6/ MAIN FLARE MATERIAL: FLAME RETARDANT THERMOPLASTIC POLYESTER
- 7/ STIRRUP AND COVER FIXINGS: STAINLESS STEEL GRADE 316
- 8/ OPTIONAL DUTY/TAG LABELS, LETTER SIZE 5mm MAX.
- 9/ TERMINALS: SUITABLE UP TO 1.5mm<sup>2</sup> (AC), 2.5mm<sup>2</sup> (DC).
- 10/ CABLE ENTRIES: UP TO 2xM25 OR 2x3/4" NPT IN POSITIONS SHOWN.

FOR UNITS WITH 2 ENTRIES, POSITIONS 1 AND 2 ARE USED. FOR UNITS WITH A SINGLE ENTRY, POSITION 3 IS USED.

BLANKING PLUGS ARE AVAILABLE.

MAX. POWER	Tamb.	T-RATING
15W	-60°C to +85°C	T4 / T135°C
	-60°C to +55°C	T5 / T100°C
	-60°C to +40°C	T6 / T85°C



EATON MEDC Ltd.  
UNIT B, SUTTON PARKWAY  
ODDICROFT LANE  
SUTTON-IN-ASHFIELD, NG17 5FB. U.K.  
Tel: +44 (0)1623 444400  
Web: WWW.COOPERMEDC.COM

DESIGNERS & MANUFACTURERS  
OF ELECTRICAL & ELECTRONIC  
EQUIPMENT & SYSTEMS  
FOR HAZARDOUS  
AREAS

DRAWN BY: D.WARREN	DATE: 10/02/2022	TITLE:	DB3BM SOUNDER ATEX / IECEx / UKEx CUSTOMER GA	SHT 1 OF 1
CHECKED BY: D.COATES	DATE: 10/02/2022			
APPROVED BY: D.WARREN	DATE: 10/02/2022			
SCALE:1:3	A3	DWG NO.	336-142	REVISION A

ISSUES

GENERAL TOLERANCES UOS

LINEAR: ±0.25  
ANGULAR: ±0.5°

SURFACE FINISH:  $\sqrt{3.2}$

ALL DIMENSIONS ARE IN MILLIMETRES UNLESS OTHERWISE STATED

REMOVE ALL BURRS AND SHARP CORNERS

MACHINE SYMBOLS THUS  $\sqrt{\quad}$

THIS DRAWING IS CONFIDENTIAL AND IS THE PROPERTY OF MEDC AND MUST NOT BE REPRODUCED EITHER WHOLLY OR PARTLY. ALL RIGHTS IN RESPECT OF PATENTS, DESIGNS AND COPYRIGHT ARE RESERVED