

# EACF-101B Ex d IP Series

Group I mining and Group II&III surface explosion proof camera station



## Overview

Made from 316L stainless steel and designed specifically for use in Group I,II,III hazardous area, this hard wearing and corrosion resistant fixed camera station is suitable for mining, oil&gas, chemical, marine and many other industries where quality and durability are a pre-requisite.

With HD IP image resolution, lens zooming capability, and Ethernet IP connectivity the EACF-101B is ideal for remote monitoring providing enhanced safety with clear visualisation of conditions in the process area.

In particular for coal mining, the EACF-101B has a compact design making it much lighter, smaller and therefore suitable for quick installation in areas where space is limited underground for example, longwall face, OEM equipment, tunnel, etc.

## Features

- Ex d IECEx certified
- Max image resolution 5MP
- Low light capability of 0.001lux
- Multiple options of power input
- IP66 / IP68 rated 316L stainless steel enclosure suitable for harsh environments
- Compact dimension
- Weight <3.5KG
- ONVIF compliant

**IECEx**



Powering Business Worldwide

Eaton  
Unit B, Sutton Parkway  
Oddicroft Lane  
Sutton in Ashfield  
United Kingdom  
NG17 5FB

T: +44 (0) 1623 444 400  
MEDCSales@Eaton.com

© 2022 Eaton  
All Rights Reserved  
Printed in UK  
Publication  
No.DSYH0024/B  
May 2022

Eaton is a registered trademark.

All other trademarks are property of their respective owners.

All specifications, dimensions, weights and tolerances are nominal (typical) and Eaton reserve the right to vary all data without prior notice.  
No liability is accepted for any consequence of use.

## Specifications

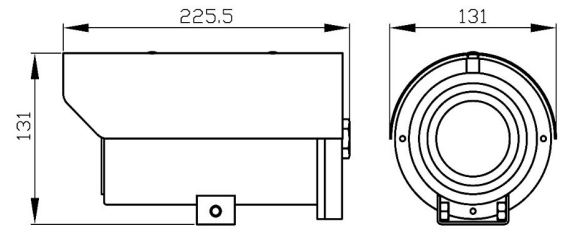
<b>IECEX certificate:</b>	IECEX ExTC 21.0013X
<b>Ex mark:</b>	Ex db I Mb, Ex db [ib] I Mb Ex db IIC T6 Gb, Ex tb IIIC T80°C Db
<b>Shock and Vibration:</b>	IEC60068-2-6, IEC60068-2-27 Class B
<b>Material:</b>	316L Stainless Steel
<b>Finish:</b>	Polished or powder coated
<b>Operating Temp:</b>	-40°C to +60°C
<b>Atmospheric pressure:</b>	80~110KPa
<b>Humidity:</b>	≤95%RH (+25°C)
<b>Ingress Protection:</b>	IP66 and IP68(1.2m / 45min)
<b>Net Weight:</b>	Non Ex version: 3.5Kg, Ex version: 4.5Kg
<b>Voltage:</b>	12VDC power supply input, optional with 12VDC IS power supply or POE
<b>Sunshield:</b>	With removable sunshield
<b>Mounting:</b>	With swivel bracket allows for base and wall mounting
<b>Cable Entries:</b>	2 cable entries for ex version. Options of M20 x 1.5, 1/2" NPT, and 3/4" NPT; 1 cable entry for non-ex version with M25 x 1.5
<b>Ethernet Connectivity:</b>	Cat 5e / Cat 6 cable connection

## Typical Camera Spec

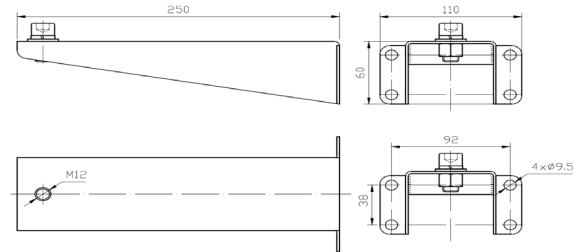
<b>Typical Camera Option:</b>	3MP with 22x optical zoom
<b>Image Sensor:</b>	Progressive scan CMOS 1/2.8"
<b>Resolution:</b>	2304 x 1296 @ 30fps
<b>Lens:</b>	22x zoom 5.2~114.4mm F1.5~F3.8, angle of view 53.74° - 2.96°,
<b>Min illumination:</b>	Colour : 0.002Lux@(F1.5,AGC ON) B/W : 0.001Lux@(F1.5,AGC ON)
<b>Streams:</b>	Triple streams in H.265 / H.264
<b>Features:</b>	AGC, AE,AWB,TDN,DNR,BLC,EIS,WDR,Defog,OSD,Day & Night Auto Colour/BW (IR-cut with auto switch)
<b>Standards protocols:</b>	L2TP, IPv4, IGMP, ICMP, ARP, TCP, UDP, DHCP, PPPoE, RTP, RTSP, DNS, DDNS, NTP, FTP, UPnP, HTTP, SNMP, SIP
<b>Typical Camera Option:</b>	3MP with 30x optical zoom
<b>Image Sensor:</b>	Progressive scan CMOS 1/2.8"
<b>Resolution:</b>	2304 x 1296 @ 60fps
<b>Lens:</b>	33x zoom 4.5~148.5mm F1.5~F4.0, angle of view 62.93° - 3.67°,
<b>Min illumination:</b>	Colour : 0.001Lux (F1.5, AGC ON), B/W 0.0005Lux (F1.5, AGC ON)
<b>Streams:</b>	Triple streams in H.265 / H.264
<b>Features:</b>	AGC, AE,AWB,TDN,DNR,BLC,EIS,WDR,Defog,OSD,Day & Night Auto Colour/BW (IR-cut with auto switch)
<b>Standards protocols:</b>	L2TP, IPv4, IGMP, ICMP, ARP, TCP, UDP, DHCP, PPPoE, RTP, RTSP, DNS, DDNS, NTP, FTP, UPnP, HTTP, SNMP, SIP
<b>Typical Camera Option:</b>	5MP with 22x optical zoom
<b>Image Sensor:</b>	Progressive scan CMOS 1/2.8"
<b>Resolution:</b>	2880 x 1620 @ 30fps
<b>Lens:</b>	22x zoom 5.2~114.4mm F1.5~F3.8, angle of view 53.74° - 2.96°
<b>Min illumination:</b>	Colour : 0.003Lux (F1.5, AGC ON), B/W 0.001Lux (F1.5, AGC ON)
<b>Streams:</b>	Triple streams in H.265 / H.264
<b>Features:</b>	AGC, AE,AWB,TDN,DNR,BLC,EIS,WDR,Defog,OSD,Day & Night Auto Colour/BW (IR-cut with auto switch)
<b>Standards protocols:</b>	L2TP, IPv4, IGMP, ICMP, ARP, TCP, UDP, DHCP, PPPoE, RTP, RTSP, DNS, DDNS, NTP, FTP, UPnP, HTTP, SNMP, SIP

## General arrangement drawing (all dimensions in mm)

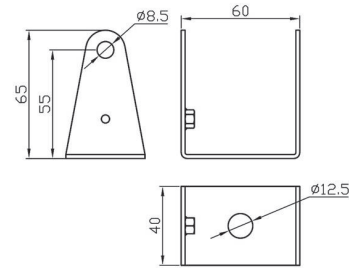
EACF-101B camera



Wall mount bracket



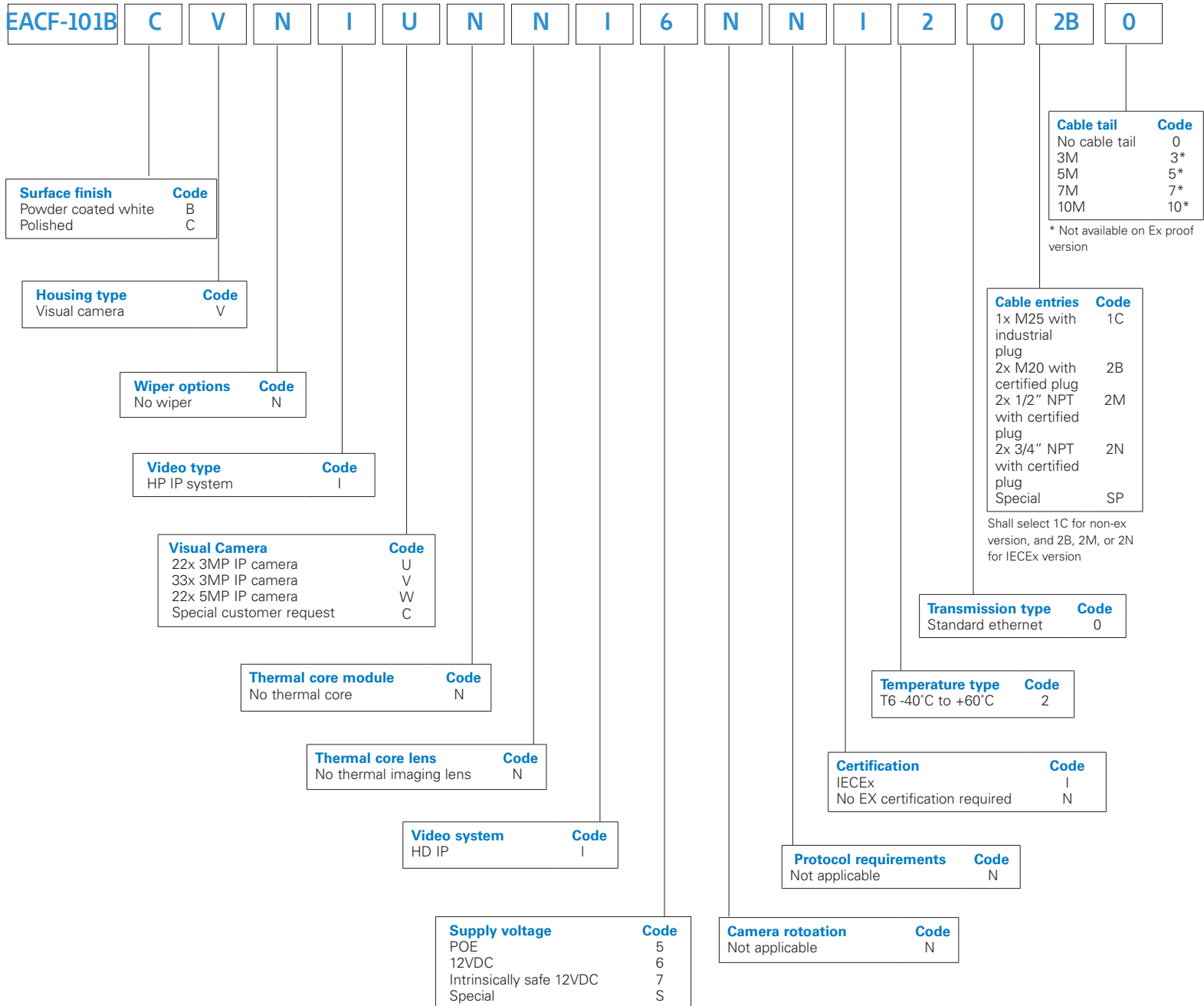
Swivel bracket



# Ordering requirements

The following code is designed to help in selection of the correct unit. Build up the reference number by the code for each selection. Any special requirement please consult Eaton technical sales department.

E.g. EACF-101BCVNIUNNNI6NNI202B0 would be the typical order configuration for EACF-101B fixed camera with 316L stainless steel material, polished surface finish, visual camera housing, no wiper, HD IP video, 3MP 22x IP camera, no thermal core, no thermal lens, HD IP video system, 12VDC power supply, no camera rotation, no protocol requirement, IECEx certification, -40°C - +60°C, standard ethernet transmission, 2x M20 with certified plug, and no cable tail.



Intrinsically safe 12VDC is inapplicable for non Ex version