

# YHQ60 HD IP series

Explosion proof PTZ  
dome camera station



## Overview

Made from 304 or 316L stainless steel and designed specifically for use in hazardous area and harsh environmental conditions. This hard wearing and corrosion resistant pan, tilt, zoom dome camera station is suitable for a variety of applications both onshore and offshore in oil & gas, marine, wind, chemical and many other industries where quality and durability are a pre-requisite.

The continuous 360° pan rotation and tilt from -90° to +90° gives an unrestricted view of the surrounding area. The rotation speed is adjustable in range of 0.1°/s~300°/s making the camera catch the objective quickly. With ONVIF protocol as standard, and a variety of mounting brackets, the YHQ60 has the operational capability for most demanding CCTV applications.

## Features

- China CQST certified
- 1080p HD IP resolution
- Zooming capability
- ONVIF compliant
- Voltage input 110~240VAC or 24VAC
- Ethernet network as standard connection
- Continuous 360° pan and +/-90° tilt rotation
- Variable speed 0.1°/s to 300°/s
- Wall mount installation



## Certifications

Ex certificate:	CNEx19.4464X
Certification mark:	Ex d IIC T6 Gb/Ex tD A21 IP68 T80°C

## Specifications

Material:	304 or 316L Stainless Steel
Finish:	Polished
Operating Temp:	-20°C to +60°C
Atmospheric pressure:	80~110KPa
Humidity:	≤95%RH (+25°C)
Ingress protection:	IP66/68
Weight:	10K
Ship weight:	11Kg
Voltage:	110VAC to 240VAC (±10%) / 24VAC (±10%) , 50/60Hz
Current:	<1A (110~240VAC) or <2A (24VAC)
Power:	<50W
Pan:	360° continuous
Pan Speed:	0.1°/S to 300°/S
Tilt:	+90° to -90°
Tilt Speed:	0.1°/S to 240°/S
Communication mode:	RS485
Preset:	128
Preset accuracy:	≤0.1°
Cable connection:	3 cores for power and 8 cores for network
Cable tail length:	3M as standard Other lengths on request
Automatic heater:	Activates at -5°C

### Camera options

#### 22x zoom 3MP HD IP camera:

Image sensor	Progressive scan CMOS 1/2.8"
Resolution	2304 x 1296 @ 30fps
Lens	22x optical zoom 5.2~114.4mm F1.5~F3.8, horizontal angle of view 53.74° - 2.96°
Min. illumination	Colour : 0.002Lux (F1.5, AGC ON), B/W 0.001Lux (F1.5, AGC ON)
Streaming	Triple streams in H.264, H.265
Features	AGC, AE,AWB,TDN,DNR,BLC,EIS,WDR,Defog,OSD,Day & Night Auto Colour/BW (IR-cut with auto switch)
Standards protocols	L2TP, IPv4, IGMP, ICMP, ARP, TCP, UDP, DHCP, PPPoE, RTP, RTSP, DNS, DDNS, NTP, FTP, UPnP, HTTP, SNMP, SIP.

#### 33x zoom 3MP HD IP camera:

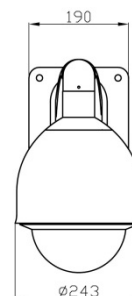
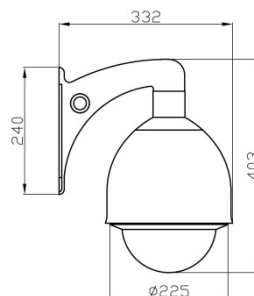
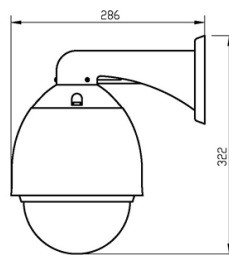
Image Sensor:	Progressive scan CMOS 1/2.8"
Resolution:	2304 x 1296 @ 60fps
Lens:	33x zoom 4.5~148.5mm F1.5~F4.0, angle of view 62.93° - 3.67°,
Min illumination:	Colour : 0.001Lux (F1.5, AGC ON), B/W 0.0005Lux (F1.5, AGC ON)
Streams:	Triple streams in H.265 / H.264
Features:	AGC, AE,AWB,TDN,DNR,BLC,EIS,WDR,Defog,OSD,Day & Night Auto Colour/BW (IR-cut with auto switch)
Standards protocols:	L2TP, IPv4, IGMP, ICMP, ARP, TCP, UDP, DHCP, PPPoE, RTP, RTSP, DNS, DDNS, NTP, FTP, UPnP, HTTP, SNMP, SIP.

#### 22x zoom 5MP HD IP camera:

Image Sensor:	Progressive scan CMOS 1/2.8"
Resolution:	2880 x 1620 @ 30fps
Lens:	22x zoom 5.2~114.4mm F1.5~F3.8, angle of view 53.74° - 2.96°
Min illumination:	Colour : 0.003Lux (F1.5, AGC ON), B/W 0.001Lux (F1.5, AGC ON)
Streams:	Triple streams in H.265 / H.264
Features:	AGC, AE,AWB,TDN,DNR,BLC,EIS,WDR,Defog,OSD,Day & Night Auto Colour/BW (IR-cut with auto switch)
Standards protocols:	L2TP, IPv4, IGMP, ICMP, ARP, TCP, UDP, DHCP, PPPoE, RTP, RTSP, DNS, DDNS, NTP, FTP, UPnP, HTTP, SNMP, SIP.

## General arrangement drawing (all dimensions in mm)

### Wall mounting



# Ordering requirements

The following code is designed to help in selection of the correct unit. Build up the reference number by the code for each selection. Any special requirement please consult Eaton technical sales department.

