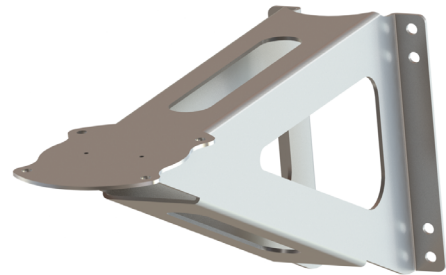


BPW6500 P&T wall bracket

Camera housing accessories



Overview

The BPW6500 is designed to accompany the Eaton stainless steel CCTV pan & tilt product range.

Its rugged design and stainless steel construction is suitable for both offshore industrial marine and land based installations.

The BPW6500 is designed to mount the XP & XT, series pan & tilt ranges, it has eight 12mm fixing holes to ensure secure mounting.

Features

- Stainless steel AISI 316L
- Electro polished stainless steel finish
- Load rating for 45 KG
- Weight 7.8KG

General arrangement drawing (all dimensions in mm)

