

XT40 HD IP series - UL range

PTZ with illuminator
camera station,
hazardous location



Overview

The Oxalis XT40 is an explosion protected twin PTZ camera station with the addition of a high efficiency automated integral LED illuminator for use in hazardous areas in onshore, offshore, marine and heavy industrial environments.

The camera housings are designed specifically for the Americas markets or where UL standards on Class and Division have been specified.

The base unit carries dual NPT cable entries with easy access for cable termination during installation as standard, maximising compatibility and ease of use with existing fixed conduit installations.

Our camera stations are designed and manufactured for longevity in harsh environments, require minimal maintenance and are fully certified to UL standards as required by OSHA in both safe and hazardous areas.

See separate datasheet for ATEX/IECEX & other zone certification ranges

Features

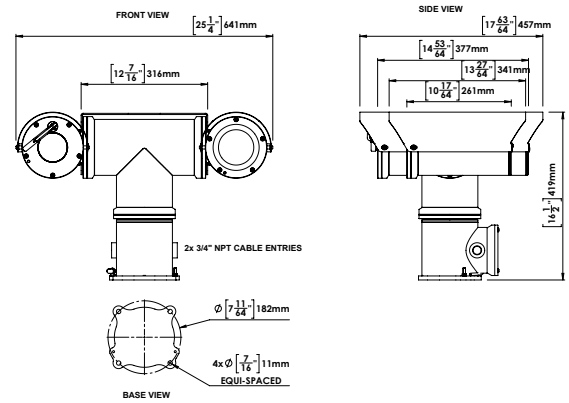
- Class 1 Division 1 and Zone 1 certified
- Electro-polished 316L stainless steel on all welded assemblies
- Camera station window in toughened glass
- Wall mounting options (see separate datasheet)
- NPT entries as standard
- Various camera module options
- Supply voltage options (24 VAC, 110 or 230 VAC, 50/60Hz)
- Certified temperature -76°F to +158°F*
- IP66/67

*Model dependent

Certifications

cULus	Class I, Division 1, Groups B, C, D, T4A -50°C to +70°C (-58°F to +158°F), T4A/T6 -60° to +40°C (-76°F to +104°F)
CI/DI	Class II, Division 1, Groups E, F, G IP67. Class 1 Zone 1 A Ex d IIB + Hydrogen T4 (T5 On Request) On Request: T5 -50°C to +70°C (-58°F to +158°F), T6 -50°C to +50°C (-58°F to +122°F) UL Listing: E477542

General arrangement drawing (dimensions in inches and mm)



Specifications

Features	Electrical
Sun shield Standard stainless steel 316L mirror finish	Supply voltage options 24 VAC, 110 or 230 VAC, 50/60Hz
Integral wiper Optional (Silicone wiper blades that are resistant and do not perish after long exposure to ozone, UV, ice, snow, heat or cold)	Power consumption 100W maximum (158W with low temperature operation)
Integral demister Standard	Electrical connections Terminal block for power and data specific to camera configuration
Washer systems Compatible with Oxalis XWP washer tanks (see separate datasheets)	Cable entry 2 x 3/4" NPT located in base
Pan speed (maximum) 45° per second	Mechanical
Tilt speed (maximum) 24° per second	Body material Electro-polished 316L stainless steel on all welded assemblies
Pre-set positional accuracy 64 presets: positional accuracy±0.1°	Fixings material A4 stainless steel
Telemetry receiver Integral - Pelco D standard protocol (others to specification)	Camera station window Toughened glass
Rotation Continuous pan or 350° rotation (+/- 175° from straight ahead)	Mounting options Wall (see separate datasheet)
Integral illumination IR nano-stack LED technology, internally powered from camera station, range up to 109 yards (depending on camera), 12° angle, 850nm wavelength. Auto switching from ambient light sensor or auxiliary command	Operating temperature From -76°F to +158°F (model dependent)
IP direct fibre out Optional integrated media converter, simplex/duplex singlemode 9/125µm or multimode 50/125µm, 10/100Mb ethernet, IEEE 802.3,	Weight (lb) Up to 99lb depending on configuration
IP over coax Optional integrated IP ethernet-over-coax converter (must be used with compatible Rx equipment)	Ingress protection rating IP66/67

Camera options

32x XNZ-6320 HP IP camera		22x zoom 3MP HD IP camera	
Image sensor	Progressive scan CMOS 1/2.8"	Image sensor	Progressive scan CMOS 1/2.8"
Resolution	Resolution: 1920x1080 @60fps to 320x240	Resolution	2304 x 1296 @ 30fps
Lens	32x optical 32x digital zoom 4.44-142.6 mm F1.6 to F4.4, horizontal angle of view 61.8° - 2.19°	Lens	22x optical zoom 5.2~114.4mm F1.5~F3.8, horizontal angle of view 53.74° - 2.96°
Min. illumination	Colour : 0.05Lux (1/30sec, F1.6, 50IRE), B/W : 0.005Lux (1/30sec, F1.6, 50IRE)	Min. illumination	Colour : 0.002Lux (F1.5, AGC ON), B/W 0.001Lux (F1.5, AGC ON)
Streaming	H.264, H.265 MJPEG dual codec, multiple streaming, VBR/CBR	Streaming	Triple streams in H.264, H.265
Features	Intelligent video analytics, motion detection, day & night (ICR), WDR (150dB), auto focus, auto Iris, AGC, SSSR, ATW, SSNR III, BLC, DIS, Defog	Features	AGC, AE,AWB,TDN,DNR,BLC,EIS,WDR,Defog,OSD,Day & Night Auto Colour/BW (IR-cut with auto switch)
Standards protocols	ONVIF Profile S, TCP/IP, UDP/IP, RTP(UDP), RTP(TCP), RTCP, RTSP, NTP, HTTP, HTTPS, SSL, DHCP, FTP, SMTP, ICMP, IGMP, SNMPv1/v2c/v3(MIB-2), ARP, DNS, DDNS, QoS, PIM-SM, UPnP, Bonjour	Standards protocols	L2TP, IPv4, IGMP, ICMP, ARP, TCP, UDP, DHCP, PPPoE, RTP, RTSP, DNS, DDNS, NTP, FTP, UPnP, HTTP, SNMP, SIP
33x zoom 3MP HD IP camera		22x zoom 5MP HD IP camera	
Image Sensor	Progressive scan CMOS 1/2.8"	Image Sensor	Progressive scan CMOS 1/2.7"
Resolution	2304 x 1296 @ 60fps	Resolution	2880 x 1620 @ 30fps
Lens	33x optical zoom 4.5~148.5mm F1.5~F4.0, horizontal angle of view 62.93° - 3.67°	Lens	22x optical zoom 5.2~114.4mm F1.5~F3.8, horizontal angle of view 55.46° - 3.09°
Min. Illumination	Colour : 0.001Lux (F1.5, AGC ON), B/W 0.0005Lux (F1.5, AGC ON)	Min. Illumination	Colour : 0.003Lux (F1.5, AGC ON), B/W 0.001Lux (F1.5, AGC ON)
Streaming	Five streams in H.264, H.265	Streaming	Triple streams in H.264, H.265
Features	AGC, AE,AWB,TDN,DNR,BLC,EIS,WDR,Defog,OSD,Day & Night Auto Colour/BW (IR-cut with auto switch)	Features	AGC, AE,AWB,TDN,DNR,BLC,EIS,WDR,Defog,OSD,Day & Night Auto Colour/BW (IR-cut with auto switch)
Standards Protocols	L2TP, IPv4, IGMP, ICMP, ARP, TCP, UDP, DHCP, PPPoE, RTP, RTSP, DNS, DDNS, NTP, FTP, UPnP, HTTP, SNMP, SIP	Standards Protocols	L2TP, IPv4, IGMP, ICMP, ARP, TCP, UDP, DHCP, PPPoE, RTP, RTSP, DNS, DDNS, NTP, FTP, UPnP, HTTP, SNMP, SIP

Ordering requirements

The following code is designed to help in selection of the correct unit. Build up the reference number by inserting the code for each component into the appropriate box

