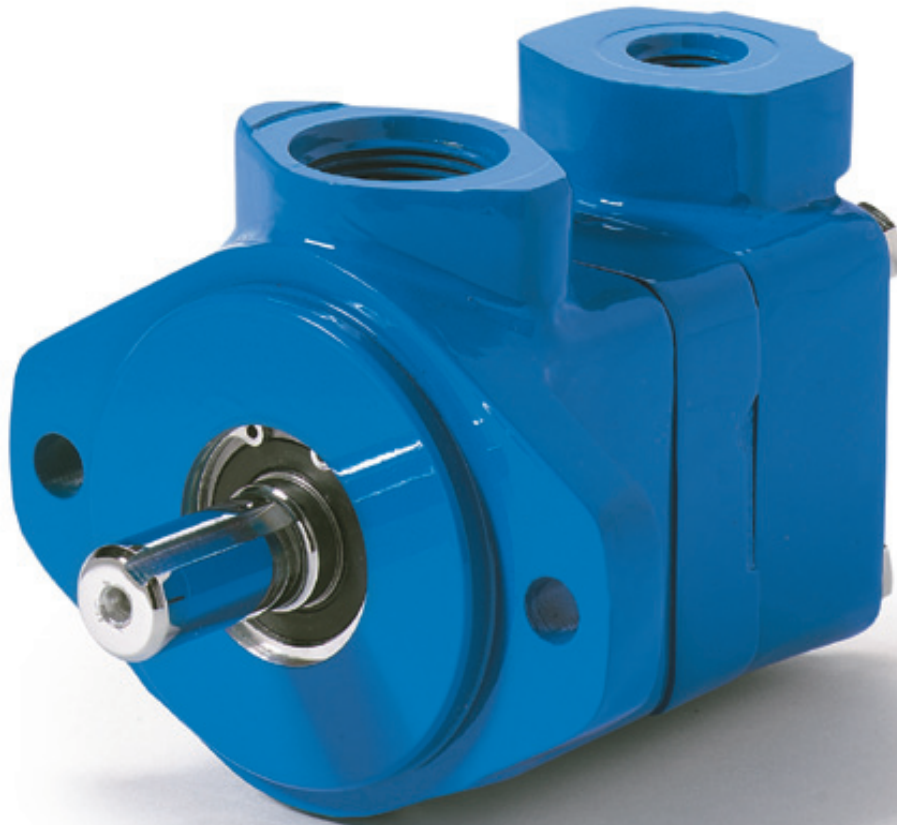


**Vickers® Vane Pumps**  
Service Data

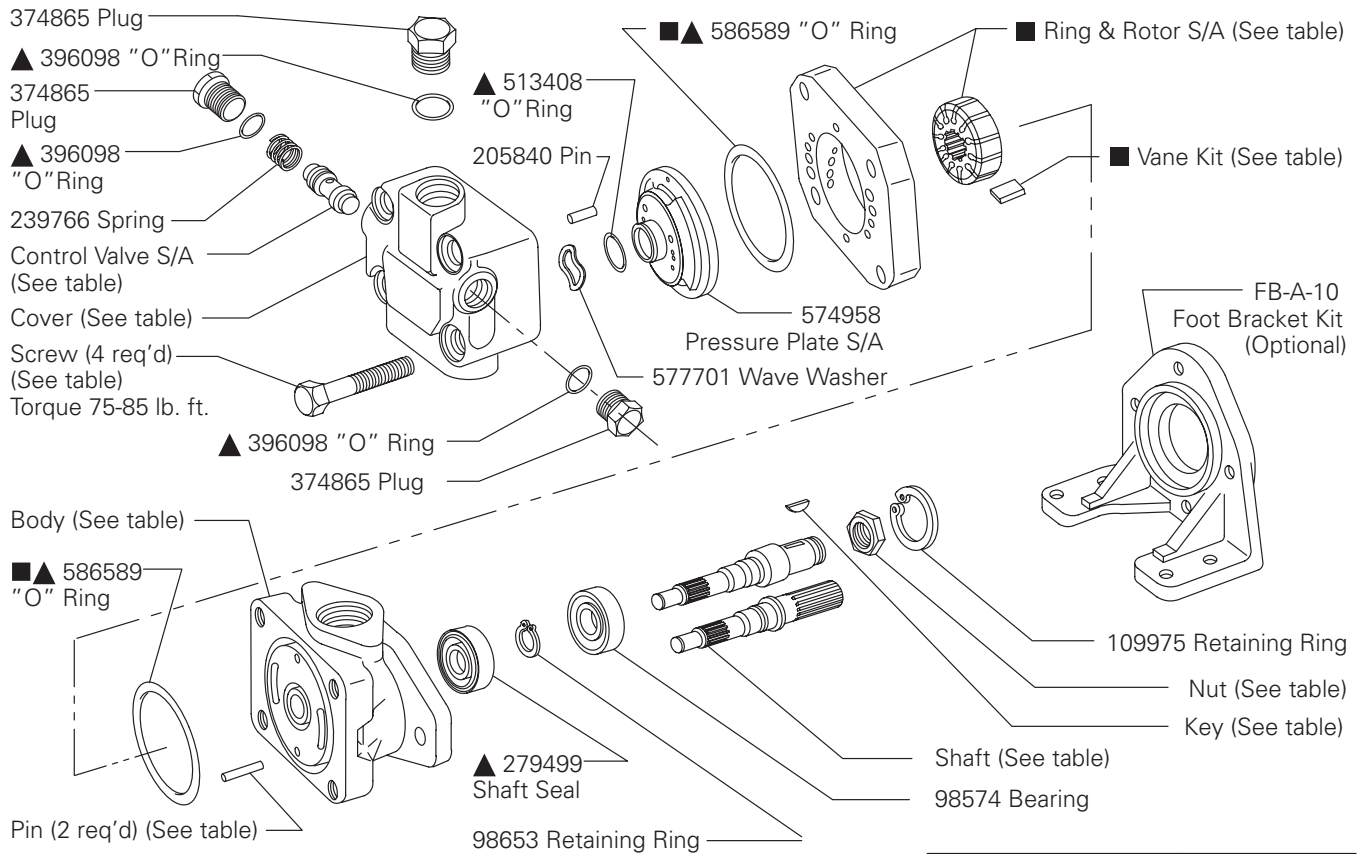


**EATON**

*Powering Business Worldwide*

# Vane Pump

V20NF-\*\*\*T-\*\*\*-22



- ▲ - Included in Seal Kit 920371
- - Included in Cartridge Kit

Model	Body
V20NF-1D	583170
V20NF-4D	583172
V20NF-1F	297228
V20NF-1P	280689
V20NF-4P	308628
V20NF-1S	294266

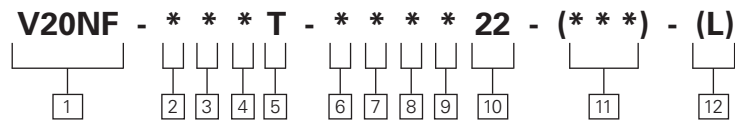
Model	Cover
V20NF-***T-***2*-22	452272
V20NF-***T-***3*-22	452240
V20NF-***T-***4*-22	452242
V20NF-***T-***5*-22	452069
V20NF-***T-***6*-22	452244
V20NF-***T-***7*-22	574959
V20NF-***T-***8*-22	452071
V20NF-***T-***9*-22	478133
V20NF-***T-***10*-22	452274

Model	Control Valve S/A
V20NF-***T-***C-22	232794
V20NF-***T-***D-22	232795
V20NF-***T-***E-22	232796
V20NF-***T-***F-22	232797
V20NF-***T-***G-22	232798
V20NF-***T-***H-22	232799
V20NF-***T-***J-22	233019
V20NF-***T-***K-22	233020
V20NF-***T-***L-22	266200

Model	Pin	Screw	■ Vane Kit	■ Ring & Rotor S/A	Cartridge Kit
V20NF-***5T	2161	11165	923651	503157	923656
V20NF-***6T				452235	923657
V20NF-***7T				452261	923658
V20NF-***8T	2478	9431	923652	574954	923659
V20NF-***9T				452264	923660
V20NF-***10T				452267	923661
V20NF-***11T	16662	96168	923653	574945	923662
V20NF-***12T				452270	923663
V20NF-***13T	9603	96168	923654	452245	923664

Model	Shaft	Key	Nut
V20NF-***T-1	280372	5881	—
V20NF-***T-3	280504	1615	132260
V20NF-***T-6	297330	1609	—
V20NF-***T-10	324043	1609	—
V20NF-***T-11	280515	—	—
V20NF-***T-38	328096	—	—
V20NF-***T-101	478142	5881	—
V20NF-***T-103	478136	1615	132260
V20NF-***T-138	478122	—	—
V20NF-***T-203	502682	1615	132260
V20NF-***T-238	502235	—	—

# Model Code



## 1 Model Series

**V20NF** – Vane pump, 20 size with flow control valve cover & internal drain

## 2 Pump Mounting

- 1 – 2 Bolt
- 2 – Foot mount - body inlet port @ 12 o'clock (viewed from shaft end)
- 3 – Power take-off
- 4 – Face
- 23 – Body inlet port @ 3 o'clock
- 26 – Body inlet port @ 6 o'clock
- 29 – Body inlet port @ 9 o'clock

## 3 Inlet Body Port

- D – 1.312-12 (SAE straight thread)
- F – 2 bolt flange
- P – 1.25 N.P.T.
- S – 1.625-12 (straight thread)

## 4 Ring Capacity @ 1200 RPM

5-5 GPM	8-8 GPM	11-11 GPM
6-6 GPM	9-9 GPM	12-12 GPM
7-7 GPM	10-10 GPM	13-13 GPM

## 5 Flow Control Cover

(Pressure port - .750-16 straight thread)

## 6 Shaft Extension Type

- For 10-13 GPM units:
- 1 – Straight keyed (standard)
  - 3 – Threaded
  - 6 – Straight Stub
  - 10 – Threaded Straight Stub
  - 11 – Splined
  - 38 – Splined

For satisfactory service life of these components, use full flow filtration to provide fluid which meets ISO cleanliness code 18/15 or cleaner. Selections from Eaton OFP, OFR and OFRS filter series are recommended.

For 7-9 GPM units:

- 101 – Straight keyed (standard)
- 103 – Threaded
- 138 – Splined

For 5-6 GPM units:

- 203 – Threaded
- 238 – Splined

## 7 Outlet pressure port position

(Viewed from cover end)

- A – Opposite inlet port
- B – 90° CCW from inlet port
- C – In line with inlet port
- D – 90° CW from inlet port

## 8 Flow Rate thru Orifice in Cover

2-2 GPM	7-7 GPM
3-3 GPM	8-8 GPM
4-4 GPM	9-9 GPM
5-5 GPM	10-10 GPM
6-6 GPM	

## 9 Control Valve Pressure Setting

C - 750 PSI	H -2000 PSI
D - 1000 PSI	J -2250 PSI
E - 1250 PSI	K -2500 PSI
F - 1500 PSI	L -2750 PSI
G- 1750 PSI	

## 10 Design

## 11 Special Suffix Feature

(Omit if not required.)

## 12 Left Hand Rotation

(Viewed from shaft end)

(Omit for right hand rotation.)

Eaton  
Hydraulics Group USA  
14615 Lone Oak Road  
Eden Prairie, MN 55344  
USA  
Tel: 952-937-9800  
Fax: 952-294-7722  
[www.eaton.com/hydraulics](http://www.eaton.com/hydraulics)

Eaton  
Hydraulics Group Europe  
Route de la Longeraie 7  
1110 Morges  
Switzerland  
Tel: +41 (0) 21 811 4600  
Fax: +41 (0) 21 811 4601

Eaton  
Hydraulics Group Asia Pacific  
Eaton Building  
4th Floor, No. 3 Lane  
280 Linhong Rd. Changning District  
Shanghai 200335  
China  
Tel: (+86 21) 5200 0099  
Fax: (+86 21) 5200 0400